

# The New York CERAMICS & GLASS FAIR 2017

Special Show Section



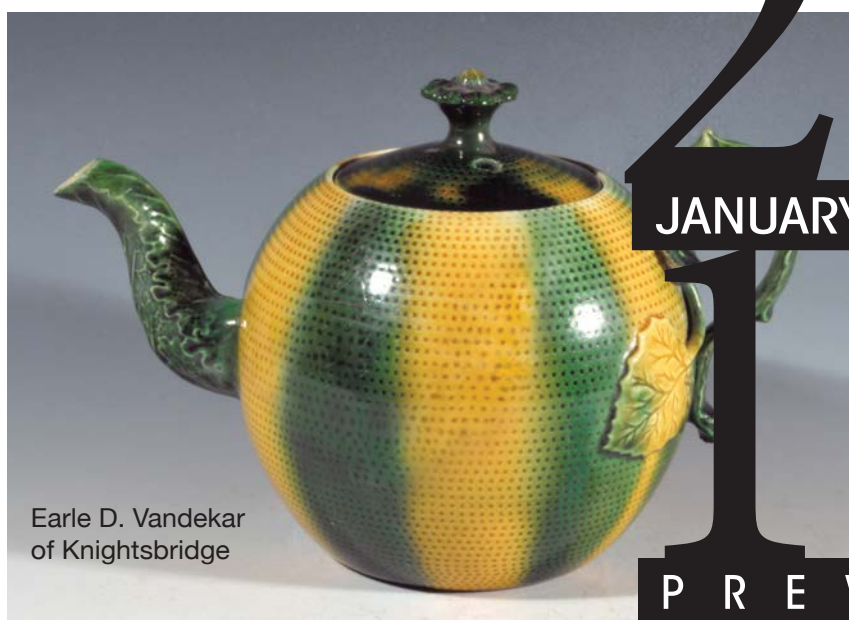
New York  
CERAMICS & GLASS FAIR



Jill Fenichell Inc.



Jeffrey S. Evans  
& Associates



Earle D. Vandekar  
of Knightsbridge

20  
JANUARY 19 - 22  
17  
PREVIEW  
JANUARY 18



Martine Boston Antiques



Polka Dot Antiques

## 2017 EXHIBITORS

Antoinettes Heirlooms, UK

Garry Atkins, UK

Lisa Battle Sculpture, USA

Michael Boroniec, USA

Martine Boston Antiques, Ireland

Martin Chasin Fine Arts, USA

Martyn Edgell Antiques, UK

Jeffrey S. Evans & Associates, USA

Jill Fenichell Inc / The Bespoke Porcelain Co., USA

Ferrin Contemporary, USA

Carrie Gustafson, USA

Katherine Houston Porcelain, USA

Leo Kaplan Ltd., USA

Lacoste Gallery, USA

Polly Latham Asian Art, USA

Cliff Lee / Lee Gallery & Studios, USA

Hideaki Miyamura, USA

Moylan / Smelkinson, USA

Polka Dot Antiques, USA

Ian Simmonds, USA

Philip Suval Inc., USA

TOJ Gallery, USA

Earle D. Vandekar of Knightsbridge, USA

Vetro Vero, USA

Michael Wainwright, USA

Maria & Peter Warren Antiques, USA

Mark J. West, UK

Lynda Willauer Antiques, USA

Bohemian National Hall • 321 East 73rd Street • New York, NY 10021 • (929) 265-2850  
[nyceramicsandglass.com](http://nyceramicsandglass.com)



The New York CERAMICS & GLASS FAIR 2017

Special Show Section

# 18th New York Ceramics & Glass Fair

Welcome to the 18th edition of the New York Ceramics & Glass Fair.

Trends come and go, and we have certainly seen our share of them. What we love about our fair is the consistency of the material — which includes a wide swathe of material — from antiquity to contemporary from a roster of international galleries.

We strive to ensure that all styles and periods are represented under one roof and continue to present contemporary artists who, with their exuberant creativity, offer up a wonderful counterpoint to all the important traditional material on view. As always, our lecture program includes

a number of exhilarating talks by prominent artists, dealers and curators, all of whom further illuminate the field of ceramics and glass.

We look forward to seeing you at the Bohemian National Hall.

*Liz Lees and Meg Wendy*



MICHAEL BORONIEC, Lanesboro, Mass. — Spatial Spirals: White crackle I & II earthenware, glaze, 2016.



MARIA & PETER WARREN, Sandy Hook, Conn. — English creamware tea pot, circa 1780, probably Yorkshire, decorated with underglaze green stripes, a cutout rim to a ribbed cylindrical shape with double entwined handles, foliate-molded spout and floral knob, 3½ inches tall.



JEFFREY S. EVANS, Mount Crawford, Va. — Pressed early thumbprint/Argus (OMN) spherical covered compote. The bowl featuring a 32-scallop rim above seven rows of thumbprints, raised on a 12-flute, double-step follow standard and a 24-scallop, circular foot, wafer construction. The cover has the corresponding number of rim points and rows of thumbprints, surmounted by an eight-lobe finial. Bakewell, Pears & Co., Pittsburgh, circa 1860, 18 inches high overall, 10¼-inch-diameter rim.

## Polka Dot Antiques

18th & 19th Century British Pottery & British Art Pottery

914-548-8708

info@polkadotantiques.com



English Delftware 'Adam and Eve' Blue Dash Charger, c. 1700-1720, possibly Lambeth, with an unusual depiction of Adam and Eve in reverse positions either side of a large tree with apples, a snake on the trunk, 13 1/8" diam.



Rare Royal Worcester 'Aesthetic Movement' Teapot and Cover, 1882, designed by R. W. Binns modeled by James Hadley, gilt and puce printed factory marks, 6¼" high.



Flight, Barr & Barr Armorial Part Dessert Service, 1830s, with arms of the Perkins and Sanders, impressed and printed factory marks.



Rare Pair of Staffordshire Pottery Figures of Equestrians, c. 1820-30, painted with colored enamels, 9¼" high.



# The New York CERAMICS & GLASS FAIR 2017

Special Show Section

## Maria & Peter Warren Antiques

*In business since 1982, specializes in 18th and 19th Century English Pottery and Porcelain, Chinese Export, Delft, early American Furniture, Paintings and other fine Decorative Arts.*

Absolutely everything to make your home distinctive



An English creamware tortoiseglazed earthenware pipe, c. 1760-70. Covered in alternating brown and yellow glazes within teal blue stripes, this rare and early pipe has a gilt lion sejant in front of the bowl, impressed maker's marks or addresses "wedge REE" on top of the stem and raised letters on one side of the stem. 5" L. Provenance: Wynn Sayman



Creamware Chintz Decorated Teapot and Cover, England, c. 1775, probably Staffordshire, ovoid shape with cabbage leaf molded handle and spout, polychrome enameled with narrow bands of vertical striping flanking a wide central triple band adorned with fruit and flowers, ht. 5 1/4 in. Provenance: ex: Dr. Alvin M. Kantor Collection



Chinese Export Porcelain 'Orange Fitzhugh' Arms of the United States, Oval Platter painted with a variation of the Great Seal of the United States, the displayed Eagle is holding a purple banner inscribed, "E Pluribus Unum," and grasping a brace of arrows and laurel branches in its talons. Lg 14 5/8" Literature: David Sanctuary Howard, Chinese Armorial Porcelain, Vol. 1, page 691, U8



Chinese Export Tobacco Leaf Platter, Qianlong, c. 1770, decorated in polychrome enamels of pomegranates, hibiscus and variegated leaves, this pattern is based loosely on textile patterns that were imported by the East India Companies. It was popular from about 1770 through the early 19th Century. 13" L



A rare and early example of a wonderfully naive figure of a saddled horse standing on a green base, c. 1790-1800. This English Pearlware Horse is decorated in Prattware colors and is in remarkably fine condition. 6" H to the tip of the ear and 6" Lg. Provenance: ex: Jonathan Horne



A lovely and large (13"H), Dutch Delft Vase, decorated in blue and white, with flowers and reserves of landscapes, mid 18th C



English Salt Glaze fuschia Ground Floral overglaze enamel decorated tea pot c. 1750 (5 1/2" H); together with a Blue Ground Floral overglaze enamel decorated tea pot c. 1750 (5 1/2" H)



Chamberlain's Worcester Cobalt Blue Ground 12 1/2" Botanical Oval Platter, England, c. 1815-20. The platter finely painted with a specimen flower, identified in English on the underside in iron red script; Chamberlain's Worcester is also identified in script. This is just one beautiful example of the 27 pieces from this service that we have on hand.

### 2017 Show Calendar:

NY Ceramics and Glass Fair, January 19-22, 2017 at the historic Bohemian National Hall, NYC  
 Chester County Antiques Show, April 2017  
 Newport Historical Society Antiques Show, July 2017  
 Ellsworth Antiques Show at Woodlawn, August 2017  
 The Main Line Antiques Show, October 2017  
 The Delaware Antiques Show, November 2017

14 Rowledge Pond Rd • Sandy Hook, CT 06482 • 203-984-6174 • ajwarren1@yahoo.com



The New York CERAMICS & GLASS FAIR 2017 Special Show Section



**JEFFREY S. EVANS**, Mount Crawford, Va. — Pressed loop/leaf vase in a brilliant teal/peacock green. The seven-loop bowl with conforming flared rim, raised on a hexagonal base featuring a compressed knop and flared foot, wafer construction. Probably Boston & Sandwich Glass Co, 1845–60, 10-3/8 inches high.



**JILL FENICHELL, INC**, Brooklyn, N.Y. — An extraordinary blown glass table by American Art Reed, made circa 2003.



**MARIA & PETER WARREN**, Sandy Hook, Conn. — Wedgwood queensware fruit basket and stand, England, circa 1790, Staffordshire, an oval form with an openwork strapped basket with molded basketweave center, with green and brown enamel trim, 8-7/8 inches, the matching stand with pierced gallery and basketweave center, 9-5/8 inches; impressed marks.



**MICHAEL BORONIEC**, Lanesboro, Mass. — Spatial Spirals: Crackle series earthenware, glaze, 2016.



**POLKA DOT ANTIQUES**, Waccabuc, N.Y. — Staffordshire salt-glazed stoneware solid agate figure of a cat, 1750s, with brown and white marbling, 3¼ inches. RPW00244



**MICHAEL BORONIEC**  
**MBORONIEC.COM**



**Jill Fenichell, Incorporated**  
**Antique to Contemporary Ceramics & Glass**  
**[www.jillfenichellinc.com](http://www.jillfenichellinc.com)**  
**[jfenichell@mac.com](mailto:jfenichell@mac.com)**

**Fine Martin Brothers Stoneware Floor Vase**



# The New York CERAMICS & GLASS FAIR 2017

Special Show Section



**POLKA DOT ANTIQUES**, Waccabuc, N.Y. — Rare salt-glazed stoneware three-color transfer printed plate, circa 1760-65, Liverpool, applied with a central image of the Aesop's fable "The Goat in the Well" in puce with floral bouquets in red and gray, 9-1/8 inches. RPW00225

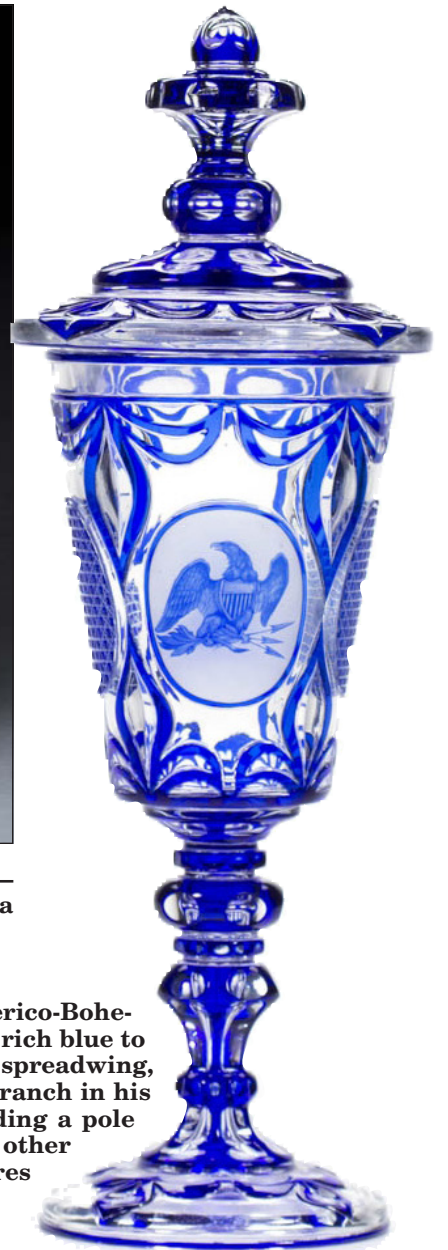


**MARIA & PETER WARREN**, Sandy Hook, Conn. — English creamware polychrome decorated melon tureen, circa 1780-90, most likely Derbyshire, 6 inches.



**LISA BATTLE SCULPTURE**, Rockville, Md. — "Coeur," hand built stoneware, fired in Noborigama wood kiln, 24 by 18 by 12 inches.

**JEFFREY S. EVANS**, Mount Crawford, Va. — Americo-Bohemian historical cut overlay pokal and cover, deep rich blue to colorless, featuring a detailed engraving of a spreadwing, shield-breast eagle holding arrows and an olive branch in his talons on one side, and seated Lady Liberty holding a pole with cap and a "Liberty" inscribed shield on the other side. In the manner of Franz Paul Zach. It measures 15 inches high overall, circa 1876.



## Americana & Fine Antiques Featuring Virginia And the South

June 17, 2017

Now accepting quality consignments.  
Contact [consign@jeffreys-evans.com](mailto:consign@jeffreys-evans.com) or  
540.434.3939 ext. 102.



**Jeffrey S. Evans  
& Assoc.**

Auctioneers, Appraisers, Brokers,  
Consultants & Collections Management

2177 Green Valley Lane | Mt. Crawford, VA 22841  
540.434.3939 | [info@jeffreys-evans.com](mailto:info@jeffreys-evans.com) | [jeffreys-evans.com](http://jeffreys-evans.com)



Important Anna Pottery stoneware presentation vase, one of two made by Cornwall Kirkpatrick for his daughters, inscribed and dated January 1, 1886. 8 1/4" x 12 1/4" x 6". Acquired directly from the family. Estimate: \$30,000 - \$50,000.

Visit us at the New York Ceramics and Glass Fair, Bohemian National Hall, January 19-22



The New York CERAMICS & GLASS FAIR 2017

Special Show Section



MARIA & PETER WARREN, Sandy Hook, Conn. — English Staffordshire creamware plate, 7-inch-diameter, press molded using a salt glaze mold and decorated with underglaze green enamel highlights, circa 1760–70.



JILL FENICHELL, INC, Brooklyn, N.Y. — A fine Wedgwood Fairylustre vase designed by Daisy Makeig-Jones, from a collection of unusual Fairylustre items to



MICHAEL BORONIEC, Lanesboro, Mass. — Spatial Spirals: Blue willow earthenware, glaze, cobalt, 2016.

# Polly Latham

## Asian Art

Very Rare 'Pronk' Tea Bowl and Saucer, c. 1745

Very Fine Pair of Kangxi Potiches, c. 1690

Charming Qing Dynasty Figure of a Rabbit

Rare Pair of Chinese Famille Jaune Ginger Jars, Kangxi Period, circa 1700

Specializing in  
Fine Chinese Export Porcelain

Always Interested in Acquiring Fine Pieces or Entire Collections

531 Albany Street, Boston, MA 02118  
617.723.7009 | 617.823.5796

[www.pollylatham.com](http://www.pollylatham.com)

New York  
Ceramics  
&  
Glass Fair  
January 19-22

LISA BATTLE SCULPTURE, Rockville, Md. — “Salutation,” hand built stoneware, fired in Noborigama wood kiln, 9 by 18 by 7 inches.



POLKA DOT ANTIQUES, Waccabuc, N.Y. — English delftware night light holder, circa 1765–75, probably London, with four pierced arches painted with birds below, 4½ inches high. RPW00219

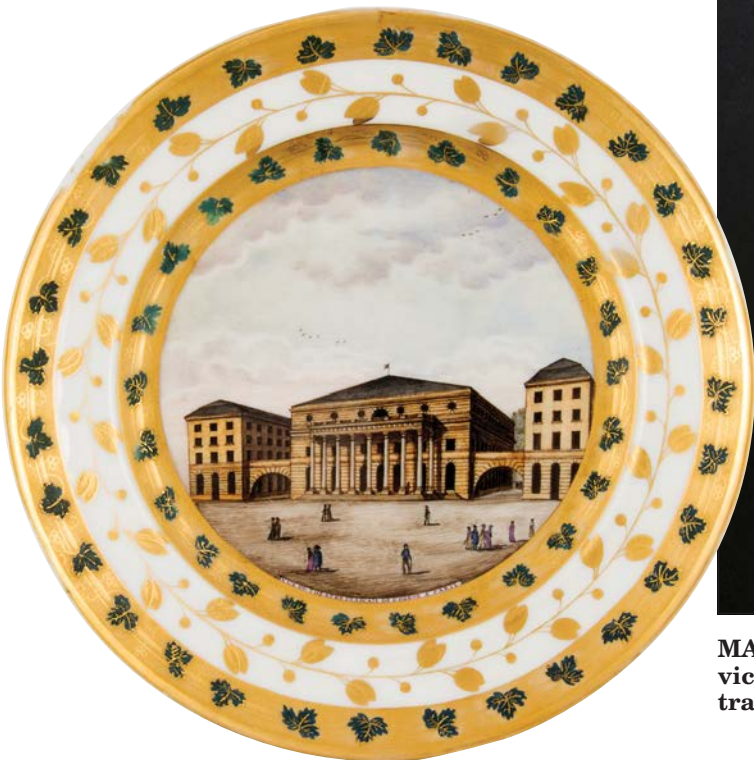


JEFFREY S. EVANS, Mount Crawford, Va. — Dutch Delft tin-glazed earthenware tazza. The gadrooned-rim plate raised on a pedestal foot, decorated with an intricate floral and geometric design. Signed for Lambertus Van Eenhoorn, at De Metaale Pot, Delft, Holland, late Seventeenth/early Eighteenth Century, 3¼ inches high, 10-1/8-inch-diameter.



# The New York CERAMICS & GLASS FAIR 2017

Special Show Section



**JILL FENICHELL, INC, Brooklyn, N.Y.** — A fine Paris porcelain cabinet plate for the Russian market, painted with a view of the Opera House, Paris, circa 1820-25.



**MARIA & PETER WARREN, Sandy Hook, Conn.** — English creamware child's partial dinner service with tea pot, milk jug, covered sugar bowl, serving platter, tureen with cover and under-tray, various serving pieces and ten dinner plates. Most likely Leeds, circa 1780-90.



**LISA BATTLE SCULPTURE, Rockville, Md.** — "Palisade," hand built stoneware, fired in Noborigama wood kiln, 21 by 36 by 4 inches.



**POLKA DOT ANTIQUES, Waccabuc, N.Y.** — Susie Cooper Gloria lustre plaque for A.E. Gray & Co Ltd, 1924, inscribed "In Days of Olde When Knights Were Bold & Ladyes Passing Fayre" on the rim, and on the reverse "Early 15th Cent(ury) Knight," printed second galleon factory mark and hand painted title and initials, S.V.C., 14 1/4 inches. RW001250

## CONTEMPORARY HANDMADE CERAMIC SCULPTURE



*"Adagio"*  
22 1/2 in x 17 in x 15 in  
Handbuilt stoneware, salt/soda fired in Noborigama wood kiln

## LISA BATTLE SCULPTURE

Showing at New York Ceramics & Glass Fair, Booth 10

[www.lisabattlesculpture.com](http://www.lisabattlesculpture.com)

202.271.3035