

The Art, Design & Antiques Show at Wallace Hall **SPECIAL SHOW SECTION**

The Art, Design & Antiques Show at Wallace Hall

January 20-22

Friday 10am-7pm Saturday 11am-6pm
Sunday 11am-5pm

- | | | |
|------------------------|-------------------------------------|----------------------------|
| A Bird In Hand | J. Gallagher Antiques | BABOU |
| R.G.L. Antiques | C.M. Leonard Antiques | Seaway China |
| Vincent Callahan | Robert Milberg Antiques | Polaris Gallery |
| Drucker Antiques | Antique American Wicker | Bizarre Bazaar |
| Silver Art by D & R | Eleanor Abraham Antiques | Tutto dal Mondo |
| Firehouse Antiques | Sorab & Roshi Fine Jewelry | Framont Fine Art |
| Imperial Fine Books | Whitehall at the Villa Antiques | House of Whitley |
| Glen Leroux Antiques | T.J. Antorino Antiques & Design | Andrew Spindler Antiques |
| Carole Pinto Fine Arts | Marcy Burns American Indian Arts | Christine Magne Antiquaire |
| Barbara Rew Antiques | Earle D. Vandekar of Knightsbridge | Sue Brown Antique Jewelry |
| From Here To Antiquity | Shaia Oriental Rugs of Williamsburg | |
| Melody Rodgers Jewelry | James L. Kochan Antiques & Fine Art | |

Wallace Hall
Church of St. Ignatius Loyola
980 Park Avenue at 84th St
New York, N.Y. 10028



Admission \$15 (516) 971-7710 RehShows.com



SPECIAL SHOW SECTION The Art, Design & Antiques Show at Wallace Hall



FIREHOUSE ANTIQUE CENTER, Galena, Md. — From a group of papier mache masks made by George Roether for Disney Studios, 1940s.



IMPERIAL FINE BOOKS, New York City — Blue and white garniture set.



BARBARA REW ANTIQUES, Lewes, Del. — Baltimore repousse sterling silver.

The Art, Design & Antiques Show
at Wallace Hall
January 20-22, 2017

J. Gallagher
Box 69, North Norwich, New York 13814



A selection of my Antique Fireplace Equipment

19th Century American Furniture • Period Fireplace Fixtures • Appropriate Accessories
Telephone (607) 334-4020 Fax (607) 336-7655 www.antiqueandirons.com

Imperial Fine Books and Oriental Art
790 Madison Avenue (Bet. 66th & 67th)
New York, New York 10065

*Chinese Ceramics and
Works of Art From the
12th to 19th Century*

*Leather Bound Sets,
Fine Bindings, Children's,
Fine and Rare Books*



Ph(212) 861-6620 • Fax(212) 249-0333
Email: Info@imperialfinebooks.com
Web: Imperialfinebooks.com

Gallery Hours: Monday to Friday 10:30 to 6:00 • Saturday: 11:00 to 5:30

The Art, Design & Antiques Show at Wallace Hall **SPECIAL SHOW SECTION**

IMPERIAL FINE BOOKS, New York City — Set of five Chinese export plates of the Indian market, Qianlong period, Eighteenth Century.

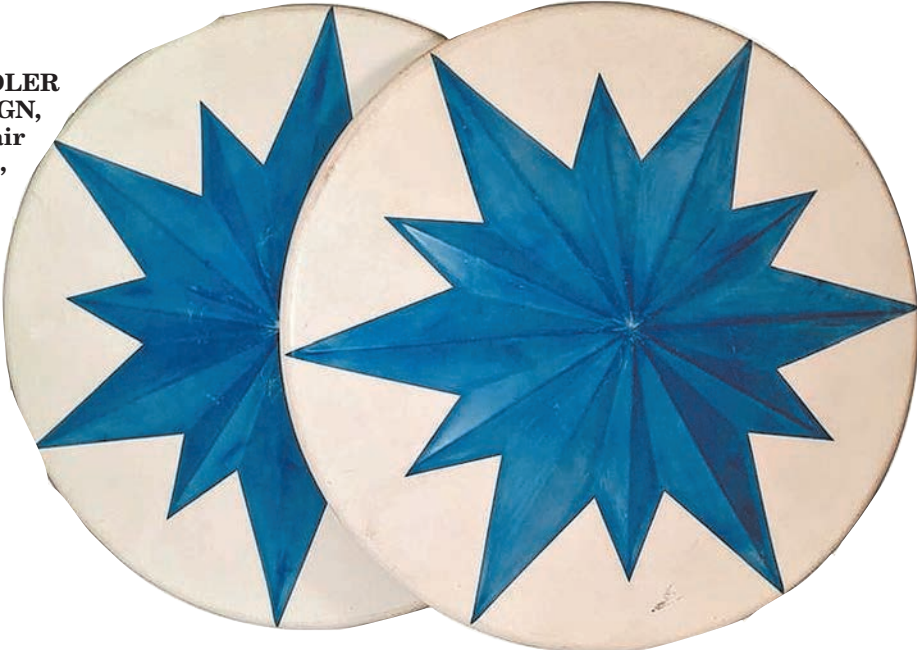
The Art, Design & Antiques Show at Wallace Hall January 20-22, 2017



FIREHOUSE ANTIQUE CENTER, Galena, Md. — From a group of papier mache masks made by George Roether for Disney Studios, 1940s.



ANDREW SPINDLER ANTIQUES & DESIGN, Essex, Mass. — A pair of fabulous giant, 70-inch-diameter, fiberglass amusement park umbrella tops, of circular form, painted white, with a large embossed blue star in the center, circa 1960. Provenance: Lincoln Park, Dartmouth, Mass.



**eleanor
abraham**
ASIAN ART

345 East 52nd Street, New York, NY • 212-688-1667
www.eleanor-abraham.com • email:info@eleanor-abraham.com
By Appointment

The Buddha Shakyamuni
Gilt Copper, Tibet
13th/14th Century
Height: 9 inches (23 cm)



ELEANORE ABRAHAM ASIAN ART, New York City — Shiva Nataraja bronze, Fourteenth/Fifteenth Century, South India, 6½ inches tall.

SPECIAL SHOW SECTION The Art, Design & Antiques Show at Wallace Hall



ELEANORE ABRAHAM ASIAN ART, New York City — An array of diverse antiques.



FIREHOUSE ANTIQUE CENTER, Galena, Md. — From a group of papier mache masks made by George Roether for Disney Studios, 1940s.



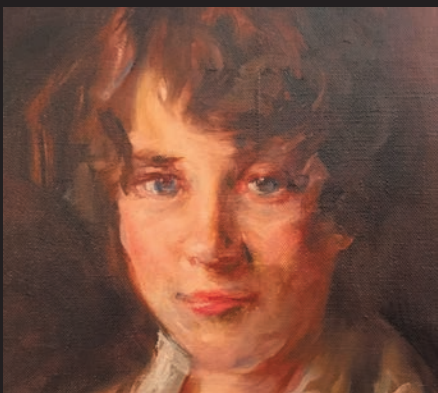
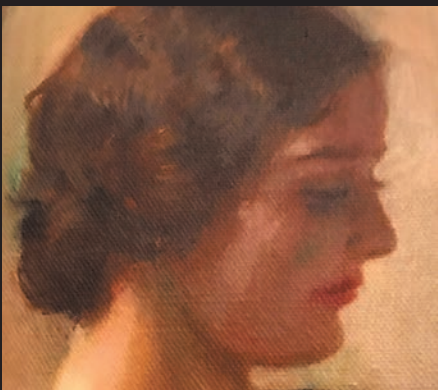
ANDREW SPINDLER ANTIQUES & DESIGN, Essex, Mass. — A charming Nineteenth Century carved and painted folk art wood dog sculpture, retaining its old original surface, 5-3/8 inches tall by 7 inches wide, by 2 3/4 inches deep.



ANDREW SPINDLER ANTIQUES & DESIGN, Essex, Mass. — A solid mahogany George III serving tray, of rectangular form, with wonderful serpentine edges and shaped carrying handles, 4 1/2 inches high by 27 1/2 inches wide, by 21 1/4 inches deep.



"I'm ready for my closeup..."



Firehouse Antiques & 100 North Main Antiques
100 & 102 North Main Street ★ Galena, Maryland 21635
OPEN Tues. thru Sun. ★ 10AM to 5PM ★ 410.648.5639

EXHIBITS Art, Design & Antique Show ★ Wallace Hall, NY ★ Jan. 20-22, 2017
Connecticut Spring Antiques Show ★ Hartford, CT ★ March 25-26
NY Garden & Antique Fair ★ Botanical Garden, NY ★ May 4-7
Spring Antique Show ★ Rhinebeck, NY ★ May 27-28

The Art, Design & Antiques Show at Wallace Hall **SPECIAL SHOW SECTION**



IMPERIAL FINE BOOKS, New York City — Hazlitt, Junot, Bourienne memoirs of Napoleon, 21 volumes, limited to 25 sets.



FIREHOUSE ANTIQUE CENTER, Galena, Md. — From a group of papier mache masks made by George Roether for Disney Studios, 1940s.

The Art, Design & Antiques Show
at Wallace Hall, January 20-22, 2017

ANDREW
SPINDLER
ANTIQUES & DESIGN



A FINE QUALITY MAX KUEHNE (1880-1968) INCISED GESSO, TEMPERA AND SILVER LEAF THREE-PANEL *DOUBLE-SIDED* FOLDING SCREEN, DECORATED OVERALL WITH FLORAL AND FOLIATE MOTIFS, SIGNED ON EACH SIDE, American, circa 1930's.

Height: 72 1/8" • Width: 48" • Depth: 2 1/2"

163 Main Street • P.O. Box 278 • Essex MA 01929
Tel: 978 768 6045 • info@spindlerantiques.com
www.spindlerantiques.com
Find us on Facebook and Instagram



ELEANORE ABRAHAM ASIAN ART, New York City — Vajrapani bronze, Tibet, Thirteenth/Fourteenth Century, 9 1/2 inches tall.

Barbara Rew Antiques

443-253-6767
Email: bbrew20@verizon.net



Baltimore Repousse Sterling Silver