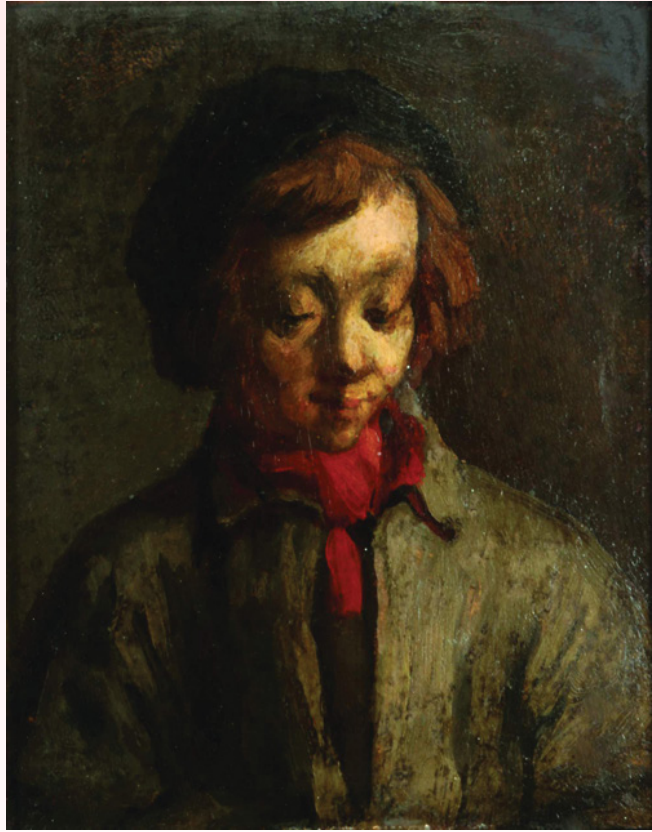


Winter Fine and Decorative Arts Auction



Attributed Jean Francois Millet (1814- 1875)
Oil on Panel
Likeness of Auguste Feuardent
Accompanied by letters from art dealer Samuel P. Avery Jr. 1895,
the artist's son (attr), 1875, Et Al



Attributed Arthur Fitch Bellows, Figure with Birchbark Canoe, 19 x 35
Attributed Jean Francois Millet



Alessandro Volpe (1820- 1887), 12 x 23



19th C. Continental School Oil, 27 x 38



After Claude Lorraine 38 x 50



Boulle Style Clock



Johann Berthelsen (1883-1972)



19th Century Oil on Canvas, Illegible, 17 x 27



Emil Grundmann (1884- 1890)



Charles Partridge Adams (1858-1942)
'Long Peak, from Estes Park, Colorado'



Continental Decorative Arts



John Charles Morris (1851- 1888) Detail, 34 x 70



Hendrick Heyligers (1877-1967) 28 x 22



Louis XVI Style Cabinet



Empire Style Day Bed



Ann Darrah (1819-1881) View of White Mountains, 23 x 36



A Suite of Three Italian School Watercolors



Fern Coppedge (1883- 1951)



19th C. Native American Ritual with Procession. 35 x 51



Oliver Dennett Grover (1861-1927)



After Johann Heinrich von Dannecker
'Ariadne and The Jaguar'

Friday, December 9 • Lone Jack, Missouri

DSA Gallery

529 West Lone Jack - Lee's Summit Road | Lone Jack, MO 64070

DIRK SOÜLIS AUCTIONS

Fine Art and Antiques Worldwide

www.DirkSoulisAuctions.com

816-697-3830 | info@DirkSoulisAuctions.com



Chiurazi Foundry Naples