

STANTON AUCTIONS

MOST IMPORTANT AMERICANA, FINE ART & ANTIQUES

(THE ONE BEFORE THE "LAST" ONE)

SATURDAY SEPTEMBER 24TH AT 10AM

106 EAST LONGMEADOW RD., HAMPDEN, MA 01036

TELE: 413-566-3161... EMAIL: INFO@STANTONAUCTIONS.COM

PREVIEW: SUNDAY SEPTEMBER 18TH 10AM-1PM

MON-FRI 10AM-4PM... SATURDAY (day of sale) FROM 8:30AM ON...

SEE 100'S OF PHOTOS ON OUR WEBSITE: WWW.STANTONAUCTIONS.COM &

A COMPLETE PHOTOED & NUMBERED CATALOG ON WWW.LIVEAUCTIONEERS.COM

This is "The one before the last one"; And as we're preparing to close our doors forever, We can't imagine how any sale could be stronger than this one, right here, right now! I want to thank all those who have always promised us their important collections and have now come through in spades! Also thanks to Dr. & Mrs. Alan Gill from who's CT home we brought 3 full truckloads of their lifetime collection in for this Auction... We usually have 3 or 4 weathervanes; in this auction we have over 20! We usually have 1 or 2 quilts, we have 15! We usually have a few garden antiques, we have more than 30! A few decoys, we have 25; Huge collections of outstanding early lighting & fireplace antiques; Huge quantities of important Art & Period furniture; Fabulous treen & early ceramics; Antique Toys; Oriental Rugs; Historical Ephemera; Clocks incl 3 tall clocks; Fabulous trade signs; Gameboards; Great Victorian & Mission Oak furniture; Early brass & copper & cast iron plus doorstops; Antique glass; Rare & Important TIFFANY & way too much more to mention in this space!!! Go directly to our internet sites for all the detail you will need & don't forget to come to one of our weeklong preview days & of course, this AMAZING AUCTION itself!



Rare Ruth Henshaw Bascom (1772-1848) 22 1/2" x 15" wc & graphite on paperboard portrait of a woman ca 1830 housed in period gilded pine frame - Bascom worked principally in the Ashby, MA area during her most productive period - this is a seldom found larger example in excellent untouched original condition



John Newton Howitt (1885-1958) 24"x32" o/c fantastic illustrator Christmas scene



Spectacular, Rare & Important late 19th/early 20th C copper seahorse weathervane w the best detail - Originally from The Gingerbread Castle in NJ - 41" tall



ca 1700-1720 great Wm & Mary dining size CT maple & pine tavern table w a fantastic 31"x68" single board orig top w its orig drawer & full stretcher base in great old grungy surface shown w a fine private collection of antique duck decoys



Extremely rare & early Wm & Mary period ca 1700-1725 Boston carved walnut oval tray top tea table in completely orig as found cond - possibly a unique form - 35 1/2" x 25 1/2" oval top size



Exceedingly rare & important copyright 1914 book titled "The Artwork of Louis C. Tiffany" w wonderful illustrations - rare to begin with as it is #110 of only 400 copies made & rarer, still because it is signed by Louis C. Tiffany & dated June 1916



ca late 19thC attrib J.W. Fiske Iron Works NY cast iron & glass aquarium (was being used in the house as a terrarium) embellished w cranes, birds & exotic water plants - Some missing elements & repairs - nonetheless a rare & important item 44" tall - 32" diam



Rare & important ca 1890's pr of bronze & wrought iron TIFFANY andirons - very few Tiffany andirons have survived because of the very nature of the utilitarian function - This lot is rarer, still, in that it retains its orig crossbar - see Alastair Duncan's "Tiffany Lamps and Metalware" pg 454 for related example 26 3/4" tall x 23" tall - 49" long crossbar



Spectacular 19thC Vict era horn armchair attrib to Wenzel Friederich of San Antonio, TX in wonderful cond - Best horn chair we've ever sold



Beautiful, rich & detailed Joseph W. Johns (1833-1877 PA) very large 57 1/2" x 37 1/2" o/c "The Apparitions Gift"



Fine QA period ca 1740-1760 Central CT River Valley fan carved cherry flat top highboy in desirable diminutive proportions - descended in the Hotchkiss family - 73 1/2" tall x 34" upper case width x 37" lower case width



Exceptional early Wm & Mary period ca 1725 Boston ball ft chest in crotch walnut veneer, fine surface & provenance 36 1/4" tall x 3 1/2" case width x 19 3/4" deep



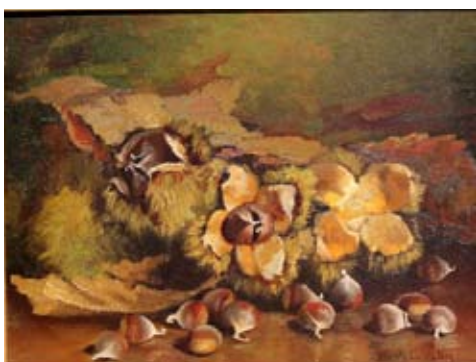
Exceptional Classical carved mahog & rosewood veneered ca 1800 NYC rare form sofa table w lyre ends featuring brass tines attrib to either Duncan Phyfe or Michael Allen - 26 1/2" w x 24" d x 27 3/4" tall



QA ca 1750 CT River Valley 7 drawer (2 over 6 split top Variant) tall chest in maple featuring old surface, period QA brasses, incredible height, graduated drawers & elegant proportions - orig found in Hatfield, MA homestead where it had resided for over 200 yrs - 59 1/2" tall x 36 1/4" case width



Fine Wm & Mary ca 1725 beautiful burl walnut Boston highboy in excellent proportions - 63" tall



J.J. LaValley (1858-1930) 10"x13" o/bd still life of chestnuts 1 of 2 J.J. LaValley paintings in this sale



Henry Grinnell Thomson (1850-1937) very large 30"x42" o/c farm scene w a woman calling workers in from the field w a conch shell signed HG Thomson upper left & titled "The Dinner Call - Wilton, CT" w orig label on verso - active in the "Silvermine Guild of Artists", Thomson was a regular exhibitor from 1881-1897 at The National Academy of Design, in great carved, possibly original, frame



George Inness (1825-1894) 7"x14 1/4" o/panel remote village in landscape orig found in a NJ estate sale w the signature not visible below the frame edge - it was quite some time later, that the frame was removed & the signature was discovered

STANTON AUCTIONS



Significant historical display of 3 personal wax seals of Commander Isaac Hull w possible signature - Hull was commander of the US Constitution during the War of 1812 - overall framed size 4 3/4" x 5 1/2"



Fine American School ca mid 19thC 23" x 29" o/c (oval framed size 20" x 26") vibrantly painted still life of fruit in excellent carved & gilded vintage frame w a sand finish mat - One of many excellent still lifes



Clinton Loveridge (1838-1915) 12" x 18" o/c Hudson River autumn scene depicting figure w walking stick in foreground, village in mid ground & mountains in background dated 1873 in orig frame & as found cond w some restoration needed to both canvas & frame - nonetheless a strong & wonderful painting



Exceptional ca 1840 very large 19 1/2" x 27 1/2" theorem painting depicting a dbl handled basket of vibrant colored fruit housed in a period birdseye veneered frame in very good untouched cond - seldom do we see these this large - See our internet sites for more



Ca 1820 NY or PA superb orig paint dec (orange, umber & yellow) blanket chest featuring side by side central drawers, modified central drop bracket base & cupid's bow bootjack ends - elaborately Vinegar sponge & feather painted, the front w central heart design, single plank cleated lid, lidded til & orig hardware - excellent untouched cond throughout - 31" tall x 51" wide x 20 1/2" deep shown w some of the private collection of cobalt dec stoneware - See our internet sites for many more ptd items & the rest of the stoneware



There are a dozen period Windsor chairs in this sale incl these examples from Scituate, MA; VT; NY State; CT; etc incl sgnd E. Tracy & more



Fine 19thC copper rooster weathervane on zinc legs in great verdigris surface w red painted comb & wattle - 26" tall x 22" wide & a very rare early ca 1850 copper rooster weathervane by A.L. Jewell & Co Waltham, MA - robust flattened full body form w applied embossed & layered sheet copper tail in excellent verdigris & pewter gray patina in excellent untouched orig cond - This form exemplifies Jewell's early work along with the use of high tin content in copper used to form the body - See "The Art of the Weathervane" by Miller page 37



Fine Victorian carved walnut marble top, turtle top table w the selection of antique cast iron doorstops atop



Outstanding ca 1860 American vict walnut slant lid secretary w highly carved lady's head crest & fine interior - approx 101" tall x 42" wide x 22" deep - There are several more excellent mid-19thC/Victorian secretaries in this sale



Rare desirably diminutive period Chippendale ca 1755-1775 Delmarva peninsula carved black walnut chest-on-chest - 85" tall x 36" upper case width & 39" lower case width



Evelyn Saccawa Dubiel (CT, 1922-) 9 3/4" x 8 3/4" w/c titled "Little Girl in a Blue Dress" in the manner of PA folk artist Jacob Maentel (1763-1863) - Dubiel is often referred to as America's foremost living self-taught Folk Artist - Provenance: direct from the Dubiel family shown w a very rare 12" diam 19thC pantry box w paint dec by Evelyn Saccawa Dubiel (1922-) - This is an early Dubiel work dated 1978 - See our internet sites for 5 more Dubiel paintings in this sale incl one thought to be one first she ever painted



Extremely rare Federal period ca 1790 Robert Adam influenced carved Northern white pine fireplace mantle & mantle surround in white paint & as found condition accompanied by a box of loosened carvings & other pieces - a spectacular & worthy restoration project - approx 104" tall x 66" wide



Rare & wonderful form early 20thC copper owl on arrow weathervane in old surface - 22" tall x 45" long. There are more than 20 fine weathervanes & related items in this sale



3'8" x 5'1" antique Kazak Oriental prayer rug - one of 30 Oriental Rugs in this sale



Extremely rare ca 1750 QA period CT maple dropleaf breakfast table w cut corner top on cabriole legs & pad feet - a rare all orig survivor in a very desirable size - 36" long



Just showing a bit of the Early American iron from bootscrapers to grills from the Dr. Gill collection



Just some of the Early American, mostly iron, lighting from the Dr. Gill CT estate - See our internet sites for details on these & more, not shown here incl his fine brass candlestick pairs collection, etc



Fine 19thC cast iron garden urn - 23 1/2" tall x 17" wide - The grounds of the Fairfield, CT estate were loaded with garden urns & planters - See our internet sites



Rare ca 1860 large Enfield, CT Shaker shoe rack in orig robin's egg blue paint - 51" tall x 62" wide shown w some of the collection of 15 antique quilts from the Fairfield, CT estate - See our internet sites for more Shaker & the rest of the quilts



Wonderful vict sheet & cast iron Optician's dbl sided trade sign w orig dbl bracket - 25" tall x 30" long plus an outstanding ca 1920's dbl sided bronze doctor's trade sign "Dr. Martin L. O'Neill" in great surface - McLellan Barclay mold - 21 1/2" wide x 21 1/2" tall



18thC Chippendale bracket base tall clock w broken arch crest, fluted columns & hand painted phases of the moon dial & brass works - 92" tall; Early 19thC CT River Valley carved pine 88" tall clock w 30 hour wooden movement, hand ptd dial & nice molded base - came out of a Southwick, MA home 45 years ago & has been in private collection ever since & an excellent late 19thC mahog carved Chippendale style grandfather clock w painted face & beveled glass waist door made by Paine Furniture Co (sgnd) Boston, MA - 91" tall - See our internet sites for details on all the clocks in this sale



Showing 3 of 9 from a Private Collection of antique French wire planters incl a pr of 3 tier demi-lune examples & a round 3 tier example from the grounds of the Fairfield, CT estate - See our internet sites for details on these & the rest



Showing just a bit of the fabulous treen collection from Bible to Pipe boxes, etc, in fabulous paint &/or original patina - See our internet sites for details on these & much, much more!



Fantastic period QA ca 1740 Newburyport, MA maple & pine rare chest on frame w orig QA brasses & great early red paint over the orig red wash - fully developed cabriole legs, scroll cut base, fine proportions & great cond 67 1/2" tall x 17 1/2" deep x 34 1/2" case width



Period Sheraton ca 1800 extremely fine & rare form carved mahog diminutive bowfront server attrib to Samuel McIntyre from Salem, MA featuring fluted columns w water leaf carving & turreted tops & gadrooned top edge & a very fine & rare period Sheraton ca 1800 Boston mahog dressing chest attrib to John & Thomas Seymour w 3 drawer gallery top & carved columns & fluted & turned legs & carved posts ending in turreted tops attrib to Thomas Wightman - See our internet sites for many more exceptional period case pcs



ca 1740's early period Chippendale MA maple slant lid bracket base desk w center drop, full stepped interior, orig brasses & desirable 35" case width plus a fabulously narrow proportion ca 1740 QA period CT cherry duck ftd slant lid desk w amphitheater interior & unusual pull out loper's above matching pull out pencil drawers - very rare form - 33 3/4" case width! See our internet sites for many more period desks in a variety of forms



Brian Coole 12 1/2" x 15" o/bd summer sky portrait of Boston Harbor as it appeared ca 1850



Brian Coole 12" x 29 1/2" o/bd wonderful colorful blue sky panoramic of Boston Harbor from the Chelsea shore as it appeared ca 1860



Wonderful dated 1900 Gorham sterling silver 3 handled 10" tall loving cup w repousee dec & presentation inscription "Rockwell Carhart from his Grandmother Carhart 1900" - approx 73ozt

NOTE: This ad could easily have been 3 times this size! Check either of our internet sites for the complete picture, come to one of our week long preview days & **DON'T MISS THIS IMPORTANT AUCTION!**
AUCTIONEER: PETER STANTON IMLER
MA LICENSE #440 • CATERED • AIR CONDITIONED
TERMS OF SALE: Cash or KNOWN check unless cleared with management in advance. We accept cash, check, MC, VISA, DISCOVER & AM EX. We accept LIVE, Absentee, Phone & ONLINE Bidding
ACCESSIBLE: From Rte 91 North & South &/or the Mass Pike (Rte 90). We are a suburb of Springfield, MA. A call for directions will save you time: 413-566-3161...Or print them off the website at www.stantonauctions.com