

BILL SPICER AUCTION

WEDNESDAY, September 21, 2016 • 5:00 pm ~ Viewing 1:00 pm

WASHINGTON LODGE MASONIC TEMPLE, 1515 TEN ROD RD, NORTH KINGSTOWN, RI

day of auction (401) 265-5104

DIRECTIONS: FROM CT. take 95 north to exit 5A (102 S). follow 102 S, cross over Rt 3 and continue on 102 for approx 9 mi. Temple is on left.

FROM MASS: take 95 south to exit 9 (Rt 4), follow Rt 4 to exit 5B (102 N). stay on 102 for ¼ mile. Temple is on right.



Butter Churn & Firkins



1939 Voice of Astrology Rack



Early Barrel Old Blue



Firkin - Old Mustard Paint



Inlaid Sewing Box with Eagle



Crock with Blue Design



19th C Grain Painted Cupboard



Danish Modern Chair



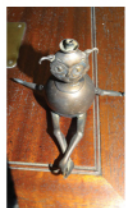
Dinky Military Vehicles



3 Doors w Stain Glass Windows



J. C. Deacon Xylophone



Sterling Elf Perfume Bottle



Framed Floral Display



C. Gordon Harris Painting



Higgins & Co, Boston Bucket



18th-19th C Reverse Painting of Andrew Jackson



Early One-Door Cupboard



9' x 12' Oriental Rug



Papier Mache Owl



Early Stepback Cupboard



Vintage Clothing



Pages Seed Display



Civil War Pistol & Accessories



Early Pumpkins



Sampler with Person & Bird



4 Schuco Cars - Wind-Up



Early Pair of Shoes



Set of Spode Dishes

FURNITURE/RUGS: early dry sink - old paint; primitive cupboard; stepback country cupboard - old paint; 19th cent. grain painted cupboard; 2, one-door country cupboards; country work table; 2-door and 4-drawer cupboard; painted spool shelf; 2 pie safes; Danish Modern lounge chair; 4-drawer period bureau; 2-door oak bookcase; oak bureau; country store revolving display; 3 doors with stain glass windows; wicker furniture; set of 4 birdseye maple chairs; wooden trunk - old paint; Adirondack plant stand, settee plus chair; painted chest; Oriental rugs; 10'x2' Indian rug; **MISC:** 1879 Royal Worcester portrait plate; 4 early pumpkins; apple ladder; 20 Lladro figurines; 10 samplers - 1809, 1813, 1818, 1861 and 1904; early foot warmer; candle box; 19390 "Voice of Astrology" rack; Higgins & Co, Boston bucket; firkin - old mustard paint; ivory game box; Victorian wall box; early blue barrel; Star Mills coffee grinder; Ingraham calendar clock; Advertising tins; tin molds; breadboard; early slate board; trenchers; yellow ware bowls; "Pages Seed" display; framed floral display; biscuit adv. sign; "Orchard of Eden" sign; Sherwin Williams sign; Dupont sign; 2 early fireplace items; butter churn; jugs and crock with blue designs; 2 ovoid jugs; Daisy butter churns; other jugs and crocks; Gone with the Wind lamps; other

lamps; 3 lanterns; basket with glass fruit lamp; Victorian beaded shades; Deluxe Mercury Gum Ball machine; inlaid sewing box with eagle; Fender FM 535SB uke; Xylophone by J. C. Deacon Inc; Kay guitar; violin by W. J. Fanning - Paganini; hat molds; old hats and shoes; dress forms; vintage hats and clothing/dresses; 2 figural hat holders; pr early shoes; lot of Victorian material; spinning wheels; viewer with picture of children and dolls; 6pc cookware lot; 7 carved decoys by Henry E. Menard; pr glass ducks by Cenedese; birds by Herman Grieg; 3 shore birds; dome with birds; papier mache owl; set of Spode dishes; set of Blue Willow dishes; Christmas houses and decorations; **MILITARY/FIRE DEPT:** Civil War black powder pistol and acc.; USMC holster; **BOOKS/EPHEMERA:** 4 photo albums; early bible; **STERLING/JEWELRY/COINS:** lots of costume jewelry; watches; gold and sterling jewelry; 3 coin spoons; Tiffany perfume; sterling pcs; 2 gold coins \$2½ - 1902 and 1911; sterling elf perfume burner; **PAINTINGS:** 18th cent. reverse painting of Andrew Jackson; C. Gordon Harris painting; oil/c chickens by Ida J. Burns, 1913; engraving Summer Clouds by W. Mason; oil/c cherries by M.L. Mulry; w/c by A. E. Biard; oil/c portrait; other paintings; 1870's Currier & Ives "The Tree of Life"; oil/c old mill with water wheel; **TOYS/DOLLS:** 4

toy sewing machines; old horse pull toy; Efanbee doll; 1938 Fun Puzzle Riddles books; RR house; 3 toy stoves; doll's trunks; cast iron sand & gravel horse drawn cart; wind-up Marx truck; wooden marbles; Stanley toy vehicle; mercury Farina car; over 85 Dinky vehicles; 4 Schuco cars; Tri-Ang Minic vehicles; Minic break down lorry; Artascope toy in box.

15% buyer's premium • Cash • RI or known check • Mastercard/Visa

DEALERS - BRING PROOF OF TAX NUMBER

VISIT OUR WEB SITE AT

www.billspicerauction.com or
www.auctionzip.com - auctioneer ID# 2954

BILL SPICER AUCTIONEER/APPRaiser

276 Widow Sweets Rd, Exeter, R.I. 02822

(401) 265-5104 • FAX (401) 295-8739

day of auction (401) 265-5104