



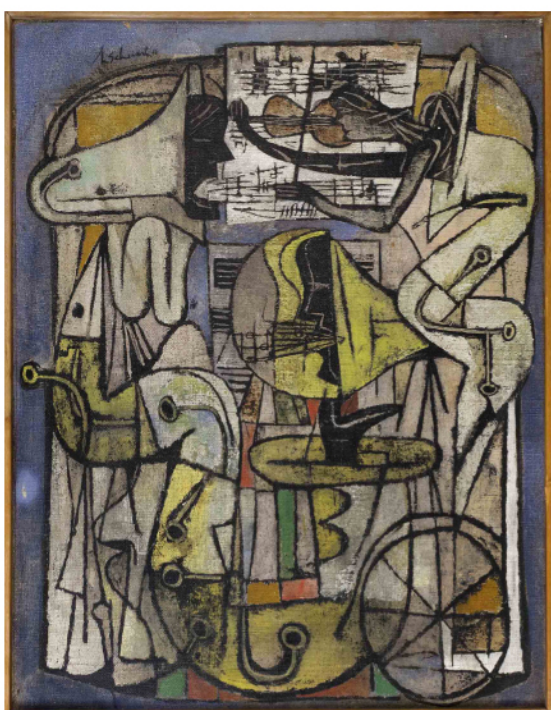
ELDRED'S

SEPTEMBER EVENING MARKET SALE

Thursday, SEPTEMBER 1
at 6:00 pm

Exhibition: prior to evening sale,
10:00 am to 5:45 pm

Please note that this is an
EVENING AUCTION
and this is a partial listing only



Approximately 50 lots: works of art by: A.V. Diehl, J. Howes, Z.L. Sepeshy, C.G. Harris, E.L. Smythe, J. Barber, W.F. Paskell, W. Grube, J. Rimini, W. Rogers, American School examples & more.

Furniture: antique American step-back cupboard and Queen Anne armchair, D.R. Dimes harvest table, Shaker-style harvest table with four chairs, custom-made drop-leaf table by David LeFort, four Windsor-style chairs by The Warren Chair Works, limed oak coffee table, grain-painted lift-top chest, wing and corner chairs, tavern tables, camelback settee, double bed. Modern pieces include: tulip arm and side chairs with dining table & side table, pairs of brown leather Barcelona chairs & chrome chairs. **Also:** Rookwood vase, Danish porcelain items, Bartmann-style jug, P. Peltz & M. Collins decoys & bird carvings, Persian book illustration, bird's-eye lithographed view of Providence, Stanislav Libensky Studio glass vase, two marble lots, Lalique, costume, silver, gold and other jewelry, Steiff ride-on-bear, six Schuco brand micro racer wind-up toy cars, pair of cast iron Boston terrier andirons, miniature five-drawer chest-on-frame, pair of P. Tarck Romeo Moon T1 table lamps, Waterbury tall-case regulator clock, Harwich, MA trade sign, two wooden canoe oars from the Holyoke Canoe Club, Rose Medallion vase, abstract Brutalist sculpture signed "Shertzer", room-size Bakshiesh rug and **much more.**

0% Buyer's Premium

Catalog: \$.00 by mail

On-line bidding available for this sale through
"Eldred's Live" powered by www.invaluable.com

with a 25% buyer's premium.

Preregistration required.

ROBERT C. ELDRED CO., INC.

1483 Rt. 6A, P.O. Box 796,

E. Dennis, MA 02641

(508) 385-3116 • www.eldreds.com

MA Lic. #155