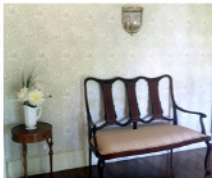
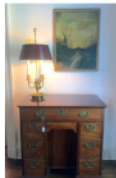


# CLASSIC TAG SALES

**FRIDAY & SATURDAY  
AUGUST 5 & 6**

**(10 am to 4 pm)**

666 ESPLANADE,  
PELHAM MANOR, NY



Prominent Westchester family estate! Exquisite furnishings, finely reproduced by superb craftsmen! Queen Anne dining table, 6 chairs & matching server, Hepplewhite inlay mahog sideboard, card table w satinwood inlay, English Regency "what not", tiger maple corner drop leaf & other side tables. Georgian drop front 2 door secretary, George III kneehole mahog desk, Sheraton sofa w mahog frame, inlaid mahog tilt top table, drop leaf banded Pembroke table w 1 drawer, Chippendale arm & side chairs, Queen Anne curved back settee, mahog canopy carved bed & pair of 4 drawer, George III chest of drawers, Walnut twin size carved head & foot boards, tall English mahog dresser, leather topped desk & chair, American maple bedroom pieces incl blanket chest & more. Persian Tabriz & Bokhara rugs thruout along with much artwork by Fred McDuff, David Olesky, Mary-Sipp Green & others. Also fine prints & lithos. Many beautiful wood & gilt framed mirrors, table & floor lamps, books, 50's dolls & large doll house, older dolls & young children's clothing. Lg amt of antique wicker chairs, tables, settees, etc. Vintage jewelry & ladies & men's designer clothing (Jaeger, Burberry, Brooks Bros, Ferragamo, etc), linens. Assorted bric-a-brac incl Limoges (oyster plates, berry set, R Daulton mugs, many smalls), fine silver plate, stemware & more.

**DIR: Hutch Parkway to exit 7 (Boston Post Road). Turn Left towards Pelham.**

**At Esplanade turn left to sale.**

**Ellen Eisner 914-761-6969**