

STANTON AUCTIONS

IMPORTANT 36TH ANNIVERSARY ANTIQUES AUCTION SATURDAY AUGUST 27TH AT 10AM 106 EAST LONGMEADOW RD., HAMPDEN, MA 01036

TELE: 413-566-3161... EMAIL: INFO@STANTONAUCTIONS.COM
PREVIEW: SUNDAY AUGUST 20TH NOON-3PM... MON-FRI 10AM-4PM...
SATURDAY (DAY OF SALE) FROM 8:30AM ON...

SEE 100'S OF PHOTOS ON OUR WEBSITE: WWW.STANTONAUCTIONS.COM & A COMPLETE PHOTOED & NUMBERED CATALOG ON WWW.LIVEAUCTIONEERS.COM

This, our 36th & last anniversary auction (1st was August 1980) is, of course, the most powerful of them all! So loaded we can't even list the categories let alone individual highlights in this space! Go directly to our internet sites for all the details you will need & don't forget to come to one of our weeklong preview days & of course, to our amazing last "anniversary" auction ever!



Showing 3 of 4 period lowboys in this sale incl 2 CT River Valley examples ca 1760's (one from Wethersfield, CT) and an early Boston black walnut lowboy ca 1735 – all featuring great orig structural integrity – See our internet sites for full details



Rare Goddard Townsend Group period QA ca 1750's very desirable plum pudding mahog exquisitely carved porringer top tea table - the refinement of this table & the choice mahog employed indicate the work of a master craftsman



Wonderful & rare Pilgrim C ca 1650's Guilford, CT all hard pine 6 bd blanket chest w cut out ends & chip carved front featuring carved initials "IH" and the date 1693 - w till & orig top - missing orig cotter pin hinges – See our internet sites for more Pilgrim Century



Fine clocks from a local private collection incl this fine Tiffany & Co bronze & enamel 20" tall clock w both dial & movement sgnd & featuring doves perched on lidded urn top finial – See our internet sites for the rest of the clock collection



Excellent 19thC 20"x18" reverse painting on glass portrait of President Ulysses S. Grant attrib to Wm Matthew Prior (1806-1873) in orig frame - one of the best cond examples of this type of Prior work we've seen!



2 of the 11 weathervanes in this sale: a Exceptional ca 1860 A.L. Jewell & Co Waltham, MA large (the largest horse Jewell made) copper & zinc flattened full body form running horse weathervane in superb verdigris surfaces - featuring hollow cast zinc head, applied copper ears & embossed serrated sheet copper tail - See "The Art of The Weathervane" by Smith pages 24 & 25 - 41" long x 23 1/2" tall & an Excellent 19thC leaping stag full body copper weathervane attrib to Cushing & White, Waltham, MA in weathered gilt surface w cast zinc antlers mounted on orig standard w directionals - 19" long x 19" tall – See our internet sites for details on the rest of the weathervanes & related



Two of our best period sofas in some time: Both carved mahog ca 1810 – One 78" from Salem, MA attrib to Thomas Hook w snowflake dec arms & the other a 67" long Boston 8 legged example w a level of refinement suggesting Thomas Seymour maker



Very rare & important QA ca 1740-1760 Philadelphia carved mahog round dish top/tilt top bird cage kettle stand in very desirable black Japanned painted surface - completely orig structure - 22 1/4" diam



Extremely fine & rare QA period ca 1755 high quality carved Cuban mahog lady's pole screen attrib to John Welch of Boston, MA in old surface w orig rare needlework depicting multiple marriages within the same family - 58 1/2" tall pole - framed needlepoint approx 19 1/2" tall x 18" wide – See our internet sites for another period pole screen



Close to 40 Oriental Rugs in this sale incl many Estate Fresh antique & semi-antique as well as contemporary examples – Palace size to rm size to runner & area sizes – This example is an 8'8"x11'3" antique Sarouk in great cond – See our internet sites for full details on all of them



Extremely fine & rare set of 6 period Hepplewhite ca 1790-1810 carved mahog shield back chairs incl 2 armchairs - from the cabinet shop of Samuel & Wm Fisk from Salem, MA in completely orig cond incl finish – One of many period Federal chair sets &/or pairs – an amazing amount! See our internet sites for details



Some of the many early New England tea & tavern tables; These from 1680-1750 in cherry, maple & pine and pine & ash; From Essex County & North Shore MA & the CT River Valley – All w great structural integrity – See our internet sites for full details on these & all the rest



Fine sgnd HANDEL (shade & base) overlay panel lamp plus a Syracuse China Onondaga Pottery hnd ptd & artist sgnd A.M. Parlow (shade & base) GWTW lamp. Parlow was a renown Handel lamp artist – See our internet sites for more fine vintage lamps incl reverse ptd, dbl student, additional panel lamps & more



Rare & wonderful form period QA ca 1745-1765 carved cherry Hartford, CT 3 part secretary on frame w orig period brasses, amphitheater interior w writing well & land deed from the family it descended in



One of three period highboys in this sale; this an excellent QA ca 1740-1760 Central CT River Valley (probably Hartford) fan carved cherry flat top highboy on scalloped skirt & fine pad feet - good structural integrity



2 fine CT QA ca 1740-1770 bonnet top highboys (one 82" tall cherry & one 71" tall maple) – See our internet sites for full details



2 of 3 outstanding cherry chest-on-chests in this sale: One a Chippendale ca 1760's-1770's Concord, MA example w rare hidden map drawer & the other a Deerfield, MA ca 1770 rare chest-on-chest-on-frame attrib to Benjamin Munn III – both in orig structural cond & period brasses



The Magnificent Seven"... Collection of 7 SAMURAI SWORDS from the 16th, 17th & 18th Century... See our internet sites for full details on these plus the rest of the many Asian items

STANTON AUCTIONS



Ca 1977 Moto Becane Model Mobylette 1.5hp Moped in orig paint w orig books & manuals - restored by an expert to running condition - New tires, tubes, ft pedals, engine mounts & grips



Wonderful quality antique 20" x 34 3/4" sight size French marine scene w a fleet of ships exiting an inlet w a hilly coast line & multiple structures sgnd on verso in French "Vue de l'embouchure de la Mer Noire" (View of the mouth of the Black Sea) - also annotated "No 44" - Great detail! Antique frame



Antique Gameboards from 1840-1920, all w orig graphic ptd designs - See our internet sites for full details on these and the rest of the excellent treen



These are each one of many examples (period round top tea tables & period card tables). What they have in common is that each is attrib to Eliphalet Chapin of South Windsor, CT and made from cherry wood in the 18thC - See our internet sites for full details on these & the many others of each type in this sale



This large late Meiji period (19thC) Japanese bronze 2 handled 27" tall vase w champlve/enamel grapes on vines w grapeleaves is one of many Asian items to be sold at the beginning of this auction - See our internet sites



Showing some of the huge collection of early lighting (18th & early 19th C) from New England & PA in forged iron, rolled tin & wood carved in various forms incl chandelier, floor standing, table top & hanging - See our internet sites for full details on these & more



Early 20thC orig red, white & blue ptd & blue ptd 55" tall marine butterfly & breakfast tables in maple & birch to a Delaware Valley dining table & a CT Hepplewhite cross stretcher based Pembroke - both in cherry - See our internet sites for details on these & the others



Fine ca 1900 mahog & brass w iron compensating balls 55" tall marine binnacle by Kelvin & Hughes w WWII compass by The Lionel Corp dated 1942



Many period sewing, work, writing, kettle & candlestands too numerous to detail here - the Boston Sheraton sewing stand shown is attrib to John & Thomas Seymour - See our internet sites for details on all incl a rare Wm & Mary ca 1680-1720 kettlestand



Period mirrors incl an outstanding ca 1820 American desirably diminutive girandole mirror in gilded & ebony paint featuring eagle w outstretched wings on rocky plinth, molded frame w orig scrolled candle arms & crystal prisms & leafy pendant - 38" tall x 23" wide - See our internet sites for details on the rest of the period mirrors



Showing some of the painted furniture and 2 of the 4 antique cupboard in this sale: Ca 1780-1820 in fine yellow early paint - See our internet sites for full details on these & others



Very rare late 18thC PA dovetailed dough box table on turned stretcher base ca 1780-1810 w orig top in maple & poplar - old surface 54 1/2" long x 28 1/2" deep x 28" tall



One of several period desks; This a very rare form ca 1780's Hepplewhite period Philadelphia lady's writing desk in mahog & mahog veneer w orig inlay featuring great multi drawer top & old surface



Showing some of the great selection of period dropleaf tables from 1725-1790 from early MA butterfly & breakfast tables in maple & birch to a Delaware Valley dining table & a CT Hepplewhite cross stretcher based Pembroke - both in cherry - See our internet sites for details on these & the others



2 Federal period ca 1790-1810 sideboards: a New England mahog inlaid serpentine front example & a Shenandoah Valley, VA cherry & exotic wood inlaid sideboard w Washington Family history



Many period case pieces in this sale incl one of several tiger maple pcs, a Hepplewhite 4 dr chest from Worcester County and a Sheraton Boston carved mahog bowfront attrib to the school of John & Thomas Seymour - See our internet sites for many more period chests



Over 50 period chairs incl these fine QA, Chippendale & Hepplewhite upholstered examples - Three of these are thought to be Boston made - See our internet sites for full details



Showing 4 of the 10 period Windsor chairs incl these continuous arm, tenon arm, lowback & braceback examples from RI, Eastern CT & NY State - See our internet sites for details on these & all the rest



There are over 50 period chairs in this sale! Showing a rare, early & desirable ca 1740 maple, ash & poplar heart & crown bannister back armchair from the Milford, CT area in great mostly orig cond & a Period Chippendale ca 1755 Newport, RI mahog ball & claw ft dining chair w powerful shell carved crest & knees, an exceptionally well turned stretcher base & with compass saddle seat - See our internet sites for details on all the rest incl many fine sets & pairs



Showing 2 of 3 period corner chairs, these both 18thC Chippendale cross stretcher base Cuban mahog examples w similarly carved splats - See our internet sites for an even earlier corner chair & full details on these



Rare sgnd Montgomery (artist or city?) dated April 1, 1858 - approx 16"x14" unframed o/c of a seated African American woman wearing jewelry & holding a young child on her lap



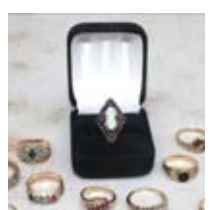
Two fine w/c's by Evelyn S. Dubiel (1922 -) both direct from the family w orig labels on verso - Evelyn Dubiel is often referred to as "America's foremost living self taught Folk Artist" - See our internet sites for details



2 of the many paintings in this sale incl these 19thC Hudson River, NY & White Mountain, NH landscapes - See our internet sites for details on these & the rest of the large quantity of Art work



A huge private collection of vintage authentic Louis Vuitton accessories - All from the Somers, CT estate - See our internet sites for full details



Showing all the 14k gold rings incl diamond from the Estate jewelry collection - See our internet sites for details on these & the rest of the jewelry incl good lg costume jewelry lots, etc



Wonderful private collection of antique brass candlesticks (mostly) pairs incl 16th/17th & 18th C examples - See our internet sites for full details on these & more



Great collection of antique cast iron incl these doorstops, banks, bootscrapers, etc - See our internet sites for details on these & more

NOTE: This ad could easily have been 3 times this size! Check either of our internet sites for the complete picture, come to one of our week long preview days & **DON'T MISS THIS IMPORTANT AUCTION!**

AUCTIONEER: PETER STANTON IMLER
MA LICENSE #440 • CATERED • AIR CONDITIONED

TERMS OF SALE: Cash or KNOWN check unless cleared with management in advance. We accept cash, check, MC, VISA, DISCOVER & AM EX. We accept LIVE, Absentee, Phone & ONLINE Bidding

ACCESSIBLE: From Rte 91 North & South &/or the Mass Pike (Rte 90). We are a suburb of Springfield, MA. A call for directions will save you time: 413-566-3161...Or print them off the website at www.stantonauctions.com