



  
**MID-HUDSON**  
**AUCTION GALLERIES**  
 PO Box 305, Cornwall-on-Hudson, NY 12520  
 914-882-7356  
 www.midhudsongalleries.com  
 E-mail: mag2715jag@aol.com



**IMPORTANT AMERICANA. FOLK ART. EMBROIDERED PICTURES. THEOREMS. PAINTINGS. CUTWORK PICTURES. SILHOUETTES. 19TH-C. BLOWN AND MOLDED HISTORICAL AND OTHER GLASS. SINGLE OWNER COLLECTION**

**SATURDAY, SEPTEMBER 10<sup>th</sup> at 1:00PM**

**179 TEMPLE HILL ROAD, NEW WINDSOR, NEW YORK 12553**

**EXHIB. TUESDAY, WEDNESDAY, THURSDAY – SEPTEMBER 6<sup>th</sup>, 7<sup>th</sup>, 8<sup>th</sup> – 11am to 4pm**

**FRIDAY, SEPTEMBER 9<sup>th</sup> – 11am-3pm. • DAY OF SALE – 10am**

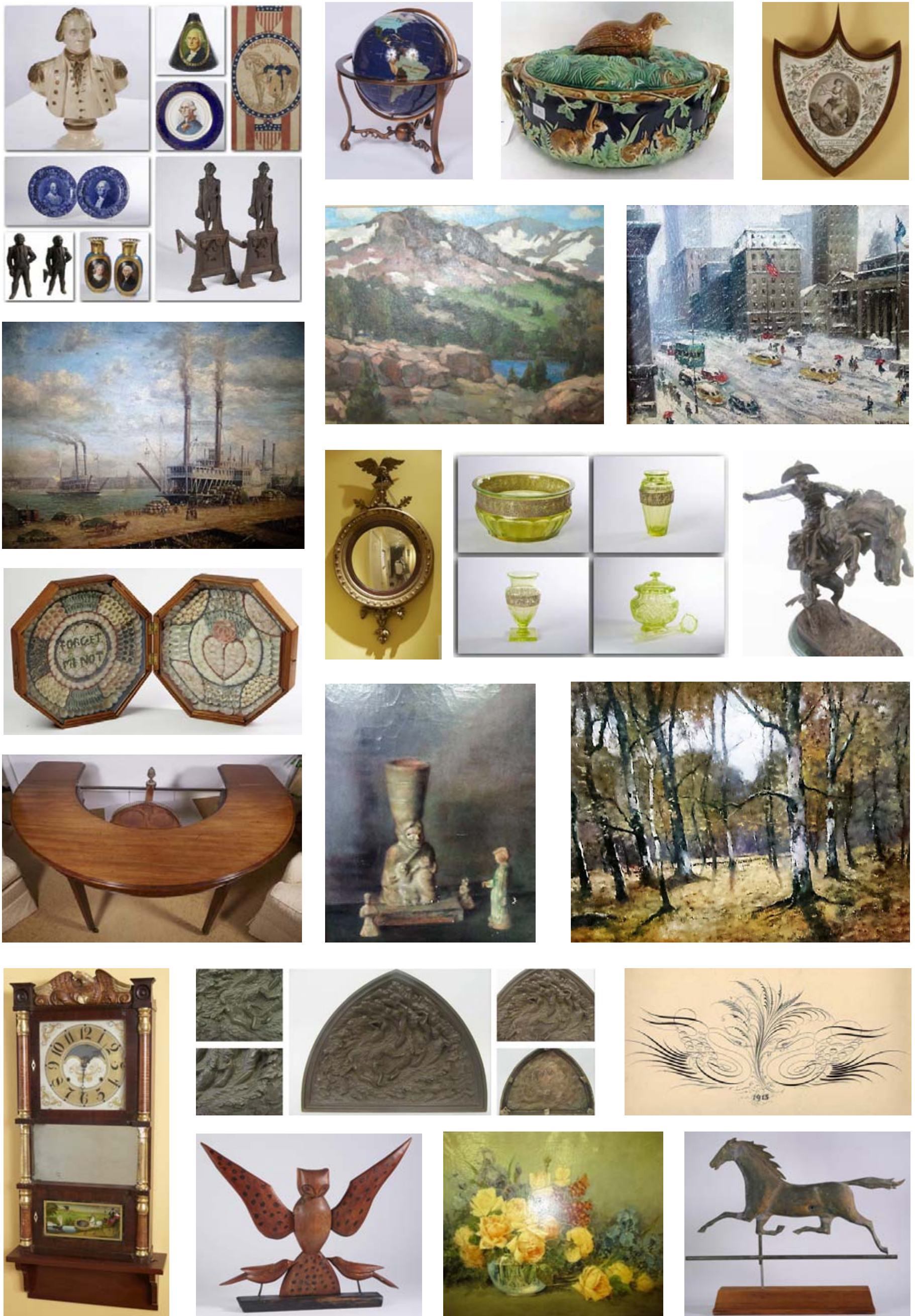
**NO RESERVES.**

*Unusual auction of a single owner collection being sold without reserves. Purchased from major auctions at Parke-Bernet Galleries including the J. Amory Haskell Coll.; The Hodgson Coll.; The Halpert Folk Art Coll. and the Garbisch Coll. Also with original purchase provenance from Cora Ginsberg, Ginsberg & Levy; The Old Print Shop; Jan and Larry Molis; Guthman Americana; E. Grosvenor Paine; Conrad Stein; John Gordon; Ruth Troiani; Good & Hutchison; Leonard Balish; Peaceable Kingdom, etc.*

Sale Features an important silk embroidered harbor scene wrought at identified girls school in Litchfield, Conn. (Parke-Bernet, 1944, J. Amory Haskell Coll. and again in April 1973 and Jan. 1977); Grand National Whig Banner; silk embroidered mourning picture for Samuel Coolidge, sgd. and executed by his daughter, 1790 (Halpert Coll., Sotheby's Parke Bernet, Nov. 1973); embroidered picture "Hope" by Elizabeth, late 18th C. (Garbisch Coll., Parke-Bernet, Jan. 1974); PA cutwork picture; portrait, Wm. Augustine Washington III, nephew of George Washington, Senior Assoc. Judge, U.S. Supreme Court, engraved by M. Févret de Saint-Mémin (Sotheby-Parke Bernet label); Federal mirror, gilded eagle surmount; George III silk needlework fire screen panel; Chas. Wilson New Hampshire Barometer, Woodruff's Pat. June 5, 1860; Birge Conn. Clock, orig. label; Washington Andirons, c. 1825 (2 pairs); 19th-C. Hessian Andirons; Calligraphy drawings, swan sgd. C. C. Fellows, dtd. 1847; horses and a country house sgd. E. C. Marlall, c. 1870-1880; American theorem, mid-19th C.; Washington textile, c. 1810 based on an Am. drawing by Charles Buxton, M. D.; Washington-Harrison textile, 1789-1889; Wm. McKinley silk banner; Washington Memorial textiles, c. 1800 "The Effect of Principle Behold the Man" and "The Love of Truth Mark the Boy"; Washington & Franklin Textile or The Apotheosis of Franklin, c. 1800; other textiles: Theodore Roosevelt handkerchief with cowboy hat and repeating TR motif; Progressive Roosevelt handkerchief; Washington Centennial Shield (Used in Washington Centennial on Wall Street); Washington Blown Flask, c. 1800-1825; Washington Redware Vase; Staffordshire Washington on Horseback Inkwell; Gillender Presidential Busts,

Complete Set of Six, produced at their exhibit on Centennial grounds; ironstone dish "Great Fire of City of New York" (Stock Exchange Fire), c. 1836-1840; Louisiana Purchase cup depicting Washington, Jefferson, Lafayette, and Napoleon. Quantities of historical Staffordshire blue and white transferware. Miniature silhouette and other portraits, Washington, Lincoln, and others. 19th-C. gilded copper and zinc running horse weathervane, c. 1860-1875; carved eagle attr. to John Bellamy, c. 1870 (Sotheby's Parke Bernet, Jan. 1974); rare Eastern PA slipware "watering can," dated 1843 (Hodgson Coll., Parke-Bernet, 1974); numerous Bennington pitchers, c. 1850-1860, Rockingham glaze, unusual decorations; IMPORTANT SCRIMSHAWED POWDER HORN. YORK COUNTY MAP. Depicts route from NYC to Oswego and Niagara. Sketched by Rufus Grider in 1890. Bears a 1761 date and initials MLG. SILHOUETTES to include a family group signed Augustin Edouart, dated 1839; Wm. McCall family, signed Augustin Edouart, 1837 (Maud Wilmot Jackson Coll.); N. Hawthorne sgd. Henry Williams, dated 1824 (Sotheby Parke Bernet, May 1975); Dr. Edward Holyoke by Master Hanks, C. 1828-1829; seated lady by S. Metford (Jackson Coll.); mother and child with horse drawn toy by Louisa Detten-Hoffer (1779-1829) (Jackson Coll.); SEVERAL EARLY AMERICAN WATERCOLOR PORTRAITS; PAINTINGS AND BRONZE SCULPTURE: An important bronze, the creation by Frederick Hart Elliott, a prototype for the work done at the National Cathedral. American and European paintings by Carl J Blenner; Max Weyl; Edgar Payne; attr. to Guy Wiggins; American oil, Loading Cotton on the Docks of New Orleans; Hovsep Pushman; Henry McFee; John Folinsbee; attr. to Frederic Bridgeman; Johnson illustration; Stubbs and others. HISTORICAL GLASS: Cleveland Hendricks 1884 tray; 1876 Centennial Ware; A Square Deal Roosevelt platter; In Remembrance Platter-"God Reigns First in Peace, Charity for All" with Washington, Lincoln, and a third; bottles to include clear and amber George Washington; Benjamin Taylor and B. Franklin, Oyottville Glass Works. CAST-IRON DOORSTOP COLLECTION. RARE WINE COLLECTION. HUNDREDS OF PCS. OF 19th-C. BLOWN AND MOLDED GLASS INC. VASELINE AND SGD. MOSER.





Online bidding at [www.liveauctioneers.com](http://www.liveauctioneers.com). Prospective bidders must register in advance in order to participate.

Bidders may also bid by telephone or by absentee bidding.

Online bidders are subject to a 25% buyer's premium. Others 22%.

Inquiries may be directed to Joanne Grant at [mag2715jag@aol.com](mailto:mag2715jag@aol.com) or by phone 914-882-7356.

Terms of the Sale: cash, Visa, M/C, Discover, Paypal, or checks, if known to us, and with the understanding that merchandise may be held until check clears.

Auctioneer: Joanne C. Grant [www.midhudson galleries.com](http://www.midhudson galleries.com)