

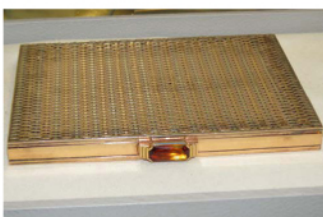
Berman's Auction Gallery

***33 West Blackwell Street
Dover, New Jersey 07801
(937) 361-3110***

AUCTION
WEDNESDAY, AUGUST 3RD
@ 3:00 PM
EXHIBIT • TUESDAY 2:00 – 8:00 PM
& WEDNESDAY 12 NOON – 3:00 PM



SIGNED FABERGE LTD ED
18K DIAMOND & ENAMEL
CIRCLES DESIGN RING



4.5" X 6.25" SIGNED CARTIER 14K
NECESSAIRE WITH TOPAZ
& ENAMEL CLASP



CHROME & LUCITE
'BUBBLE' CHAIR



4'3" HIGH ORNATE VICTORIAN
BRASS ETAGERE WITH
MARBLE TOP



3 PC MID-CENTURY HANS HANSEN DANISH STERLING TEASET

ITEMS NOT PICTURED: JOHN ROGERS GROUP 'HA I LIKE NOT THAT', SILVER INCL PR AUSTRO-HUNGARIAN 4 LIGHT CANDELABRA & 5 PC EUGEN MARCUS 800 SILVER TEASET, BRONZES, SEVRES URNS, FINE & COSTUME JEWELRY, LARGE SELECTION OF ARTWORK, GUCCI SUITCASE, LARGE SELECTION OF EARLY 20TH CENTURY LICENSE PLATES, FURNITURE INCL CARVED SATINWOOD BEDROOM SET, MAHOGANY BEDROOM SET & BREAKFRONTS, OAK, CAST IRON GARDEN URNS, MID-CENTURY, FRENCH STEEL BENCH, VICTORIAN PIER MIRROR, SHENANDOAH VALLEY CHERRY PIE SAFE, ANTIQUE FRENCH PROVINCIAL CUPBOARD, AND MUCH MORE.

BERMAN'S AUCTION GALLERY

Auctioneers: Alan & Steve Glaubman
*Member of NJ Society of Auctioneers Association,
National Auctioneer's Association*

20% Buyer's Premium, Credit Cards Accepted

**For more information, call 973-361-3110
or Visit our website for additional photos
at: www.bermansauctiongallery.com**

