

Winter Associates

Auctioneers & Appraisers

AUCTION: Monday, June 27th, 6:30 pm

Previews: Sun., June 26th, 2 - 4 pm;

Mon., June 27th, 3 - 6:15 pm or by appt.

Fine Art, Prints, Photographs, Sculpture, Mid-Century/Modern, Asian, African, Haitian, Jewelry, Silver, Glass, Etc.

View catalog online at www.AuctionsAppraisers.com



C. Ries, 12" h.



Laci de Gerenday Bronze, 11" h.



Noel Rockmore, oil, 30" x 25"



14K & Assorted Stones



Plat. & Diam. (2 cts.)



18K & Jade



14K



Late 19th C. Chinese Huanghuali



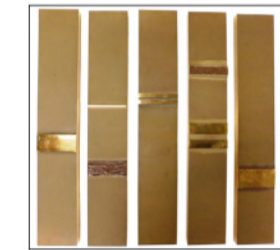
Kuniyoshi, litho., 15" x 12"



14-18K, Tiger's Eye, Diam.



19th/20th C. Chinese



Attr. Gregg Lefevre



Edward Wormley for Dunbar



Jacques Gourgue, acrylic, 15" x 23"



25+ African Lots



Dux & Other Scandinavian



Dunbar "Mr. & Mrs." Chest



T. & Co. "Eng. King" (100 pcs)



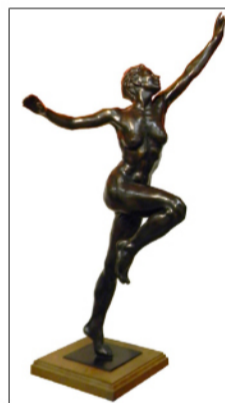
Gorham, 15" dia.



Paul Zimmerman; Dux; Mid-Century/Modern



Howard Schatz, "Atlantis #1"



Kokkin Bronze, 46" h.



Silver Miniatures



Edward Wormley for Dunbar



Bronze Garden Sculpture, 36" h.



Dambreville, oil, 29" x 39"

Fine Art, Prints, Photographs, Sculpture, Mid-Century/Modern, Asian, African, Haitian, Jewelry, Sterling, Glass, Etc.
Fine Art: Gershon Benjamin oil; Gerard Bhengu w/c; Bruce Bomberger illustration; Alfred D. Crimi oil; Barbara Eckhardt-Goodwin oils (2); David Fredenthal pencil & w/c on paper; Marion Huse oils & w/c's (7); Stewart Katz acrylic; Margaret Layton oil; Miklos Mihalovits oil; Noel Rockmore oil; Jan de Ruth oil; Jaing Qi pastel; Xu Yingpei oil; Valentin Zenkousky oils (2); Paul Zimmerman oils (2); Wilfred Zogbaum charcoal on paper, etc. **Haitian:** Claude Dambreville acrylic; M.D. Francois oil; Jacques Geslin acrylic; Jacques Enguerrand Gourgue acrylic; Rodrigue Mervilus oil; Yves Michaud acrylic; Paul Nemours oil; Michel M. Obin oil, etc. **Prints:** Alexander Sandy Calder silkscreen campaign poster; Erte (aka Romain de Tiroff) serigraphs (2), one from "Zodiac Suite" series; Richard Florsheim lithographs (3); Robert Indiana silkscreen; Norman Ives silkscreen campaign poster; Yasou Kuniyoshi lithograph "Pears, Grapes, and Peaches", c. 1927; Raphael Soyer lithographs (2), etc. **Photographs:** Imogen Cunningham; Ralph Gibson; Jay Maisel; Jeanne Montoussamy-Ashe from "Daufuskie Island" series; Howard Schatz (3) from "Underwater" and "Nude, Body, Nude" series, etc. **Posters:** Family Dog Productions posters FD-56, FD-111, FD-113, c. 1967; ArtRock/Philip Cushway numbered reproduction Jim Morrison poster, etc. **Sculptures:** Laci de Gerenday bronze of standing bison, 11" h. x 14" w. x 6" d.; Kristen Kokkin bronze depicting nude woman, 43" h.; attr. Gregg Lefevre bronze sculpture comprised of five rectangular panels; after Alexander Archipenko bronze statue, 14" h.; two similar bronze swan sculptures, 29" & 36" h.; Christopher Ries "Pacific Flora" optical crystal glass sculpture, 12" h.; George Norboe cut glass marine sculptures, etc. **Mid-Century/Modern Furniture:** Edward Wormley for Dunbar: "Mr. & Mrs." chest; sofa w/ continuous backrest; tamboured buffet (No. 4865), veneer loss; "Lawson" armchair (No. 5022) & ottoman w/ later upholstery; pair armchairs, some loss; pair cube end tables (No. 4474), etc. **Folke Ohlsson for Dux:** pair lounge chairs; sofa w/ cream cushions; teak dining table w/ two leaves; six dining side chairs w/ later green upholstery, etc. **Also:** 4-pc bedroom suite comprised of tall chest, 5-drawer chest w/ mirror, & night-stand, mahogany finish w/ possibly Bakelite pulls; B. Brody chrome & upholstered arm chairs; eight dining chairs, six side & two arm; dining table w/ four leaves; Trio coffee table w/ wicker under tier & other platform coffee table; pair barrel back lounge chairs; three Brown Saltman & Lane cube shaped end tables; cast-iron desk chair; large & small servers; three Scandinavian end tables; asymmetrical two-tier tea cart, etc. **Stickley & Mission Style:** 20th C. two-tiered revolving bookcase, labeled; early 20th C. child's reclining Morris chair w/ loss; occasional or lamp table, labeled; drop leaf end table, labeled; rocking arm chair, etc. **Fine Furnishings:** 20th C. Chinoiserie decorated breakfront display cabinet; center hall table w/ gray marble top; artist signed North Carolina craft wool stool, etc. **Asian:** Furniture: late 19th C. Chinese huanghuali altar table originally purchased in Hong Kong in 1999; pair armchairs w/ matching stand, possibly huanghuali; 19th C. Chinese altar table w/ cloud carving; 19th C. Chinese wall shelf; early 20th C. Chinese screen w/ o-p-p decoration; single panel floor screen w/ Arabic script; large 20th C. Chinese cabinet, 73" h.; two sets of matching filing cabinets & chests, etc. **Ceramics & Decorative Arts:** earthenware vase & jar w/ oxlood glaze; early 20th C. Japanese damascene cigarette case & compacts; black & aqua champlevé vase; late 19th C. Famille Rose umbrella stand; assortment of champlevé, cloisonné, hardstone, horn, porcelain vases, boxes, jars, and dishware, etc. **Sculpture:** carved stone head of Guanyni, 15" h.; gilt cast-metal statue of Balinese warrior deity, 16" h., etc. **Art:** Chikuseki (3); Ogata Gekko; Hiroshige; Hokusai; Shiro Kasamatsu (2); Tsukioka Kogyo (2); Ohara Koson (3); Yasou Kuniyoshi lithograph, "Pears, Grapes, and Peaches", c. 1927; Shiro Takagi; Utamaro, etc. **Tribal:** African: Furniture: Senufu carved wooden throne, 39" h. x 36" w. x 25" d., etc. **Helmets, Headdresses, & Masks:** Baluba (2); Chokwe (4); Dan incl. one executioner's (5); Ekor (5); Guro (5); Kenya; Kuba (5); Marka (2); Mende; Mossi; Pende (2); Punu; Salampasu; Senufu (4); Sepik (2); Songye (2); Tikor (3); Toma (3); three devil's masks incl. one incorporating animal horns & pelt, etc. **Statues:** bronze standing elder, 24" h.; Baule seated female; Dangese standing figure; Ekoï female figure; Mossi carved figures (3); Sepik figures (3); Tikar statue possibly fertility god, 34" h.; South African standing male statue, 31" h.; Yoruba (3) including pair, 11" h., etc. **Other:** Benin figures (2); figural lutes (2) & cylindrical drum;

Yoruba, Congo, and Dogon carvings; Senufu antelope wall hangings (2); Ivory Coast fly swatters (2); Mumuye arm puppet; early Coptic Ethiopian Christian icon, etc. **American Indian:** Lewis Family Acoma miniature pottery (4 pcs); Pacific NW mask of a horned figure; Pueblo, Santa Clara, & Nampeyo miniature pottery (9 pcs), etc. **Polynesian:** Balinese painted mask; Papua New Guinea pierced wall hanging, 15" h. x 54" w., etc. **Jewelry:** Rings: platinum & diamond wedding set comprised of engagement & wedding rings (center stone 2.19 cts); 18K, emerald, & diamond ballerina ring (emerald 0.65 cts); 14K two-tone ruby buckle ring; three platinum as well as 14K wedding bands; two 14K & amethyst cluster rings; blue sapphire & diamond ring (0.72 cts tw); 18K & diamond fashion ring (1.47 cts tw); 14K diamond men's ring, etc. **Necklaces:** 18K hollow rope chain (79.6 gms); 14K & tiger's eye quartz chain (86 gms); antique jade prayer wheel pendant w/ 18K Gucci chain; 14K & diamond double rope chain choker, etc. **Bracelets:** six 14K yellow gold bracelets: one w/ wide brick pattern; one w/ nugget finish; two slides w/ diamonds, opals, sapphires, rubies, pearls, emeralds, amethysts, turquoise, etc.; one w/ black onyx; and one with diamonds (1.00 cts tw); six solid sterling Danecraft bangle bracelets, etc. **Other:** pair 14K & diamond earrings (1.17 cts tw); 14K multi-stone brooch comprised of nine stickpins; men's and women's pocket & wristwatches incl. Girard Perregaux, Rolex, Bucherer, etc.; Mexican silver; cufflinks, cameo brooches, and pins; as well as large assortment of costume jewelry incl. Napier, Monet, Corocraft, Renoir, Glamour, etc. **Sterling:** Tiffany & Co. "English King" pattern flatware (100 pcs); Towle "Candlelight" pattern flatware (93 pcs); Wallace "Grand Colonial" pattern flatware (55 pcs); Gorham footed compote, 15" dia.; Gorham water pitcher; Tiffany & Co. plate, 10" dia.; eight early 20th C. child's cups by Gorham, Fisher, Whiting, International Sterling, etc.; 15 tested sterling miniatures, some w/ moving pieces, incl. horse-drawn carriages, standing & seated figures, etc.; pair George Jensen type candlesticks; Dominick & Haff, Royal Danish, International Sterling, Cartier, R. Wallace & Sons, Frank Whiting, etc. flatware & serving pieces, etc. **Other Silver:** two late 19th/early 20th C. boxed sets of mother-of-pearl flatware & serving pieces (26 pcs); mixed 835, 800, and silver plate souvenir spoons, etc.; silver plate incl. Gorham, Reed & Barton, Kirk Stieff, etc. **Glass:** Christopher Ries "Pacific Flora" optical crystal glass sculpture, 12" h.; George Norboe cut glass marine sculptures; Lalique owl and angel fish paperweights (11 pcs); Nina Ricci for Lalique figural perfume bottles (4); Steuben & Spode figurines; 35+ Swarovski & Swarovski type animal & insect figurines; art glass, etc. **Waterford:** terrestrial globe on base, 11" h.; "Kennedy" oval serving bowl, 13" l.; as well as decanters, carafes, vases, candleholders, biscuit jars, desk clocks, bells, etc. **Oriental Rugs:** Modern: Bijar design; Gabbeh; Iranian Classical Heriz pattern scatter rug/wall hanging; Kazak (3); Old Rudag; Oushak (2); Persian style; Serapi (2); Sultanabad; Tabriz pictorial scatter rug/wall hanging, etc. **Clocks:** Angelus Relide rotating combination clock w/ barometer, thermometer, etc.; Majak; Westlock; Jerome & Co.; "Deco Seth Thomas; New Haven Clock Co.; E. Ingraham Co.; late 19th C. French black slate, 9" h., etc. **Ceramics:** Minton "Quattro" pattern dinner service for 12 (72 pcs); Limoges partial dinner service (58 pcs); Homer Laughlin "Mexicana" pattern partial dinner service (70 pcs); Cauldon, England flow blue turkey platter; Royal Doulton; Royal Copenhagen; Bing & Grondahl; Lladro; Nao; W. Goebel; Herend; Aynsley; Wes- sels; Czech deco alienware pottery (13 pcs), etc. **Important Misc.:** Schonbek "Quattro" design two-toned chandelier w/ Swarovski crystal prisms, some damage; two similar bronze garden swan sculptures, 29" & 36" h.; figural 3-light candelabra, cast-metal sculptural grouping depicting camels & palm trees; carved hardstone owl sculpture signed "W. Gebbens", repaired, 13" h.; carved hardstone figures, boxes, & stone fruit incl. tiger eye, pink quartz, etc.; two carved wooden wall plaques, one owl, other foliate; mid-20th C. wallpaper rolls w/ Japanese inspired design (5 rolls, each measuring 45" x 18"); Mexican tourist collectibles incl. carved jade figural paperweights; two Spanish galleon form doorstops, etc. **LOCATION:** 20 mins. west of Hartford, CT. Approx. 2 hours. from NYC or Boston. **I-84W:** exit 33 to Rt. 72W to exit 2, left onto 372W, first right onto Cooke St., 2nd drive on left; **I-84E:** exit 34, left onto Crooked St., left onto 372W, after 6/10 mile take right onto Cooke St., 2nd drive on left. **TERMS:** 20% Buyer's Prem., MC/VISA/DISC, Cash, Approved Checks; Absentee, phone and online bids accepted.

