



WIEDERSEIM ASSOCIATES, INC.
APPRAISERS AND PERSONAL PROPERTY CONSULTANTS

PRE-SUMMER ANTIQUE AUCTION
SATURDAY, JUNE 18, 2016 at 9:00am

PREVIEW TIMES: FRIDAY, JUNE 17th FROM 11:00 AM TO 7:00 PM & SATURDAY, JUNE 18th 7:00 AM UNTIL SALE TIME AT 9:00 AM

Griffith Hall, Ludwig's Corner Firehouse

1325 Route 100, Glenmoore PA 19343, (37 miles west of Philadelphia)

DIRECTIONS:

From The PA Turnpike: Take Exit 312 "Downtown Exit" bear right onto Rte 100 North through the intersection of Route 100 & Route 401 to the Ludwig's Corner Firehouse on the left.

From Delaware: Follow I-95 North to Rte 202 North to Rte 100 North, cross Rte 30 and proceed approximately 8 miles through the intersection of Route 100 & Route 401 to the Ludwig's Corner Firehouse on the left.

- **Phone and Absentee Bid services available** •
- Food available from *Catering by Yellow Springs*

Selling Antique & Decorative Furniture & Accessories, Silver, Fine Paintings & Prints, Reference Books On Antiques, Gold Jewelry, Ship Models, Oriental Carpets, And More

Selling for Estate of Juliana W. Stowe, Villanova; the Estate of Patricia Harrison Jacobs, Malvern, and other area Estates & Collections.



Furniture group



Tin type of John W. McCown, C.S.A.



Signed "Robert Shearman, Philadelphia"



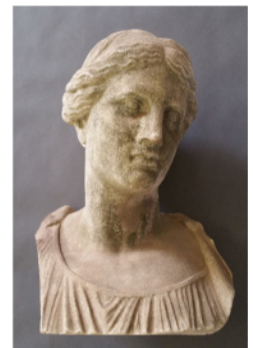
Oil on canvas painting, signed "R.D. Dunkelberger"



Signed W.E. Baum



Oil on canvas painting of frigate Isabella, signed "Walters 1827"



Marble bust of Dianna



Oil on canvas painting of Bartholomew Penrose



Oil on canvas painting, signed "D. Edzard"



Oil on canvas painting, signed "Rosa Bonheur"



Shirvan Mat



Sterling silver group



Clock signed "Julien LeRoy, Paris"



Furniture group



PA walnut hanging cupboard



1964 Jaguar Mark II 3.4 Sports Sedan

AUCTIONEERS: Theodore E. Wiederseim, President, AL-003361-L& Kimberly K. Hemmingway, AU-000359-L

APPRENTICE AUCTIONEER: Derek Chandler, AA-019509

Address: Wiederseim Associates, Inc., P.O. Box 470, Chester Springs, PA 1942 • **Phone:** 610-827-1910

Fax: 610-827-1930 • **Email:** info@wiederseim.com • **Website:** www.wiederseim.com

TERMS OF SALE: Cash or check with proper identification.
Note: 20% buyer's premium and PA 6% sales tax applied to all purchases unless proof of resale number. All purchases must be removed by the end of the sale. Separate Terms & Conditions apply to Internet Bidding via Live Auctioneers www.liveauctioneers.com