

GABRIEL'S

AUCTIONEERS/APPRAISERS

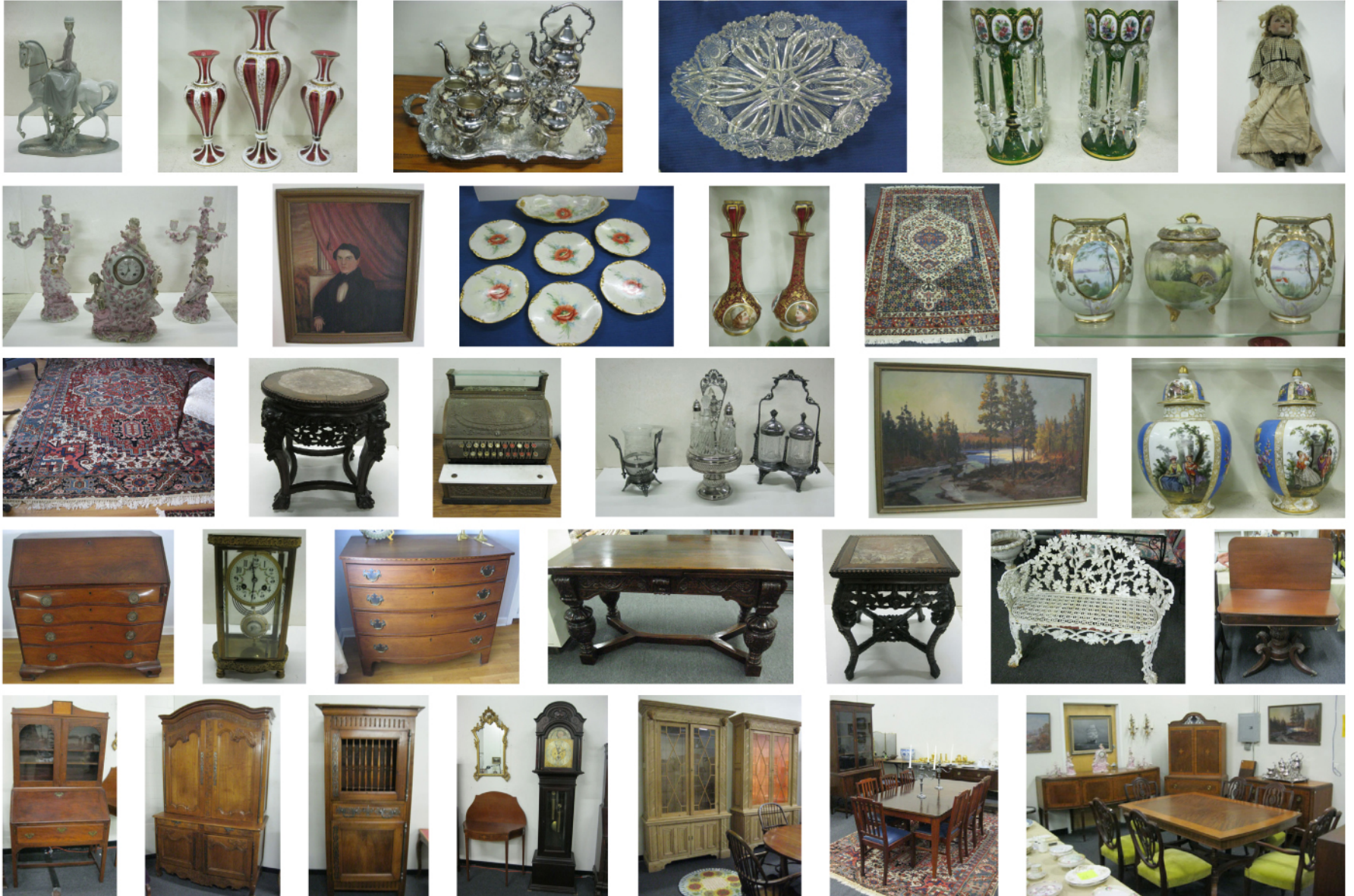
Fine Quality Antiques & Estates Auction

MONDAY EVENING, JUNE 13th @ 6PM, VIEWING 1PM

Saturday preview, June 11th (11- 4 pm)

Visit our website for listing and photographs: www.gabrielsauctions.com

Featuring several estates! The Estate of Juanita Bartlett, Martha's Vineyard. Producer, writer and director for TV series shows, best known for the *Rockford Files* and *The New Maverick*. (European antiques and Oriental rugs); The Estate of Victoria Chassion of Canton, MA. (Amer. Antiques, Sterling & Oriental rugs); Newton Antique Dealer's Estate (Bohemian glass, porcelains & more); Contents of a Brockton residence (1920'-30' Mahogany furniture & accessories); West Roxbury estate (Collection of cut glass & Waterford)



ANTIQUES: Maple N.E. side chair w/rush seat, c.1760; cherry oxbow Chipp. slant-front desk, 40" w., c.1780; cherry banded inlaid 4-draw bow-front chest, c.1800; country fall front secretary desk on legs, c.1810; Windsor bow-back armchair; 19th c. mahog. transitional Empire card table; early ladder-back armchair. **EURO./CONTINENTAL:** Period French carv. Louis XVI dining room cabinet; ant. country French baker's cabinet; ant. country worktable w/draw; Georgian corner chair; ant. Louis Phillip sewing/work table; country French gaming table-desk w/leather top; pr. of matching carved pine cabinets w/glazed doors, applied ram's heads, lighted, (60" w.x96" ht.). **VICT:** Brass mt parlor stand; grape carv. chairs, armchair, footstools; parlor table. **GARDEN:** Cast iron settee & plant urn, c.1900's. **EARLY 20th C. MAHOG. FURN:** Carv. Jacobean draw center table (57"x29"); Chipp. style block-front secretary desk; Hepp. style inlaid card tables; Paine's Furn. Co. (10)pc. inlaid D/R set; Paine's Furn. Co. Hepp. Revival style (13)pc. D/R set; carv. sofa w/wing chair; Chipp. style 3-tier dumbwaiter; carv. parlor set & corner chair; Federal style drum table w/leather top & more. **VINTAGE:** Kent Coffey (4)pcs: bed, corner desk w/bkcases. **STERLING:** (102) pc. Intern. flatware, "Joan of Arc", for (12) w/extra pcs; Towle flatware; coin spoons & serv. pes; candlesticks, etc. **PLATE:** Sheffield (7)pc. coffee & tea set w/tilt-hot water pot & waiter; Viet. plate dble pickle caster & 5-bottle cruet caster set; Viet. figural toothpick holder of boy & basket; pr. 3-lite candelabrum & more. **PORC:** Pr. h.p. Augustus Rex style 12" vases and pr. cov. h.p. 12" jars; German vases; Limoges trays - coco set - oval 13 1/2" tray w/(6)plates; Willets Belleek ped. dishes; (2) 9 1/2" fig's "Grape Harvest" & more. **CERAMICS/POTTERY:** Pr. Staff. retic. fruit ped. bowls; Delft 16" chargers; bisque figurines; B&M jardiniere & more. **CHINA:** (34) pes. gold dec. w/many Pickard pes. **GLASS:** Pr. Bohemian 11" cuUenameled white to green mantle lusters; Bohemian (3)pc white cased cranberry glass garniture set, c. 1880; Bohemian 14" white cased gothic cut baluster ped. style vase; Bohemian wines; lg. enameled German 12" chalice w/mounted cavalier; gilt & enameled cruet bottles; Italian gilt & enameled finger bowls; (2) Bristol glass 8" vases (blue/white); green cased intaglio cut sugar shaker; (2) Bohemian cranberry 8" portrait perfumes; sterling overlay trivet & cologne bottles. **CUT GLASS COLLECTION:** Asstd cut & brilliant: 16" vase; 14 1/2" rd tray; 14" dia. punch bowl; 10 1/2" pitchers w/(5) tumblers; candlesticks; 14" trumpet vase; decanters;

celerics; candies; deep & shallow bowls; 15 1/2" oval platter & more. **WATERFORD:** Stemware, celerics; s&p; decanters; c&s; bowls; pr. 10" flower vases & more. **ASIAN:** (3) Chinese carv. hardwood m.t. stands; Chinese gong; cloisonne; soapstone; Jade & glass floral trees; pr. white glazed Chinese Foo dog table lamps & Quan Lin fig's; Chinese doc. box; hard wood stands; (4) m.o.p. inlaid panels; pr. 16" Satsuma vases; Nippon includes pr. of 7" scenic vases & cov. vase & more; glazed pottery figurines & more. **ARTWORK:** Ant. oil portrait of gentleman; (2) Charles Vermoskie (1904-1991) landscape oils; Marine "Flying Cloud"; Viet. landscape; modern oil landscapes & European city scenes. **ACCESS:** Ant. National brass cash register; US National map dated 1860; gilt & silver mirrors; brass wall sconces w/drops; Vintage Coldscheider 12" marble figure of a Dutch girl; 19th c. pewter student's lamp; embossed planter w/lion head pulls & bucket; equestrian cap; jewelry boxes; dresser trays; Vintage lamps; brass fireplace accessoies & more. **ANTIQUE TOOL CHEST** filled w/ antique, old & vintage tools (sold in 1 lot) **CLOCKS:** Late Viet. 3-pc. pore. clock garniture set w/figures feeding birds, French key wind, time & strike, signed Bailey, L. Japy Frevers movement; mahog. tall case clock, c. 1920's, 2-wts, 1-tube, moon dial, 9'1"ht.; French brass crystal regulator. **COLLECTIBLES:** Lladro figure of woman on horse, 18"ht. **ANTIQUE DOLLS:** Bisque head DEP S154, 19"; bisque head AM Germany DEP AM4, 19"; (3) china head Jenny Lind. **ESTATE ORIENTALS:** Several rm sizes: Heriz, 7'10" x 10'6"; Hamadan, 4'3" x 6'9"; 19'10" x 10' Iranian & more.

TERMS: Cash, approved check; M/C, Visa & Discover over \$100.00. (17%) Buyer's premium; Sizes and descriptions are approx. and subject to error. Everything sold "as is", "where is". All sales are final. (MA. #246)- (FL. AU4519)

Absentee bids accepted. • Phone bidding available.
GABRIEL'S AUCTIONEERS & APPRAISERS
 192 Vanderbilt Ave., Norwood, MA. 02062 (Off Route 1 "The Auto Mile")
 (781) 769-1600