

# Winter Associates

Auctioneers & Appraisers

**AUCTION: Monday, May 16th, 6:30 pm**

Previews: Sun., May 15th, 2 - 4 pm;

Mon., May 16th, 3 - 6:15 pm or by appt.

Americana, Lighting, Art, Silver & Gold, Victorian, Textiles,  
Musical Autographs, Dolls, Firearms, Oriental Rugs, Etc.

View catalog online at [www.AuctionsAppraisers.com](http://www.AuctionsAppraisers.com)



Winfield Scott Clime,  
oil, 19" x 23"



Americana & Lighting



Gary Ray, oil, 10" x 13"



18th C. Figured Maple



Late 19th C. French



Many Dolls: Steiner, Jumeau, K & R, Etc.



Artist Signed Presidential



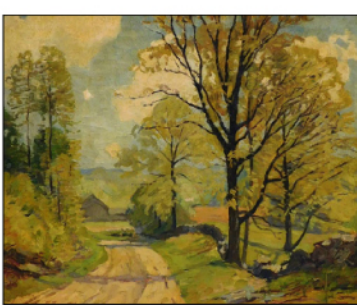
Tiffany "Faneuil" (82 pcs)



Litchfield, Conn., c. 1850



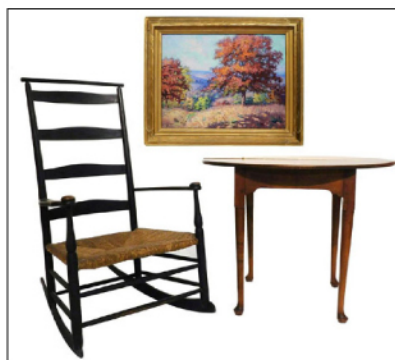
Antique Firearms Incl. Springfield, Remington, Etc.



J.G. McManus, oil, 19" x 23"



Federal



Americana; Helen Hodge



M-O-P, 8" dia.



Americana



Music & Candle Stands



Edison & Oak



Late 18th C. Painted



Musical Autographs

**Late 18<sup>th</sup>/early 19<sup>th</sup> C. American Antiques:** Two early corner cabinets, first 2-pc w/ cherry finish & blue painted interior, 87" h., the second a single piece barrel back w/ red stain, 77" h.; chalk-inscribed Federal inlaid mahogany sideboard; figured maple slant lid desk; seven drawer tall chest; five drawer chest; chest with four long drawers of graduated size and ogee bracket feet; three drawer grain painted chest; blanket chest w/red stain; two Queen Anne tavern tables, one w/blue green paint; grain painted drop leaf table; two New England Windsor sack back arm chairs, both w/painted finish; tilt top tea table w/birdcage support; Federal book or music stand; five candle stands w/square, cut, octagonal tops, etc., one tilt top damaged, etc. **Victorian & Eastlake:** 2-pc secretary bookcase w/cylinder roll top; 2-pc mahogany bookcase desk; ladies desk w/tambour top; oak bow front china cabinet w/claw feet; oak single pedestal dining table w/claw feet; walnut open bookcase; recamier; oak single drawer hall table; stand w/serpentine top; three hall chairs, one arm & two side; carved walnut easel, 72" h., etc. **Other:** Georgian demi-lune mahogany table, possibly shortened; papier mache spoon back chair w/m-o-p inlay; early 19<sup>th</sup> C. French style twin bedsteads, headboards hand-painted w/floral bouquets; primitive storage cabinet, two of four sides mustard painted; plate rack w/red finish, etc. **Wicker:** dressing & side tables; sewing baskets (2); magazine rack; Heywood Wakefield rocking chair; table lamp, etc. **Fine Furnishings:** Shaker style rocking chair; George II style upholstered arm chair; two Chippendale style chairs; five Hepplewhite style chairs, two arm & three side; pair Weiman side tables, etc. **Mirrors:** early 19<sup>th</sup> C. Federal wall mirrors (5) w/reverse painted tablets depicting paddlewheel, woman at piano, fishing figures, cottage, etc. **Lighting:** single & double burner Sandwich type clear & amber fluid & peg lamps; Julien Causse figural lamp depicting woman at hearth; early 20<sup>th</sup> C. cast-metal figural owl lamp; two hanging lamps incl. Moorish style vigil lamp; diminutive fluid lamps & accessories; early green demijohn bottle converted into lamp; Gone-with-the-Wind type table lamp w/matching globular shade; many other table lamps incl. Bradley & Hubbard, Miller, J.B. Owens, etc. **Fine Art:** Judith Carbine oil; Winfield Scott Clime oils, one depicting Southern sharecroppers w/peacocks, the other a winter landscape; David Cox w/c; Cecil Grant oil; Frank Gresley w/c; Helen Hodge oil; Marion Huse oils and w/c (7); Jerry Inman oil; Edward Lattey w/c; Fred MacNeill oil; James Goodwin McManus oil; Spencer Nichols gouache; Marie Danforth Page oil; William Partridge oil; Emmett Pratt oil; Gary Ray oil; Toussaint Renaud oil; Richard Gay Somerset oil; Eola Sutherland oil; Dan Truth oil; Bruce Turner oil; Mary Loring Warner pastel; Thomas Worthington Whittredge graphite & washes (3); signed Presidential miniatures, each w/c on porcelain or ivory, depicting Washington, Jefferson, Lincoln & others; early Continental School seascape; 19<sup>th</sup> C. paintings of woman & children (2); numerous small landscapes, etc. **Prints:** Gordan Grant litho.; Daniel Rice, James G. Clark, & E.C. Biddle mid-19<sup>th</sup> C. colored lithos. depicting American Indians (6); Robert Shaw engravings (3); Lawrence Beall Smith litho.; Victoria Huntley lithos. (3), etc. **Sterling & Coin:** Tiffany & Co. "Faneuil" flatware (82 pcs); 5-pc Frank M. Whit- ing & Co. tea service; Reed & Barton footed urn, 7" h.; Tiffany & Co. covered vanity jar; Arthur Stone; Gorham; International Sterling; Dominick & Haff; Redlich; Paul Revere Reproduction, etc.; vanity accessories; pair seafood shears, etc. **Other Silver & Gold:** pair Emil Radke (Warsaw) figural silver candlesticks with seated lion standards, 4" h.; Tiffany & Co. 18K demitasse spoon; silver plate roast dome, covered serving dishes, coffee pots, etc. **Jewelry:** carved crystal & 18K perfume bottle on 14K chain; 14K & diamond Hamilton lady's wrist watch; 14K pins, charms, & necklace pendants; costume jewelry, etc. **Textiles, Vintage Clothing & Accessories:** mid-19<sup>th</sup> C. "Whig Rose" pattern quilt w/Litchfield, Conn. family provenance cataloged by Connecticut Quilt Search Project; women's clothing incl. gowns, skirts, tops, wraps, pajamas, and lingerie, c. 1840-1930; children's clothing incl. christening gowns; 19<sup>th</sup> C. lace curtains, table cloths, runners, doilies, pillow cases, etc.; modern Indian sari, etc. **Musical, Theater, Opera & Dance:** violinist Nicolo Paganini concert programs and prints (5); Italian opera soprano Giuditta Pasta hand-written letters (2); autographed cartes de visites of opera sopranos Lilli Lehmann Kalisch & Geraldine Farrar; early 20<sup>th</sup> C. photographs incl. autographed Mischa Elman; late 19<sup>th</sup> C. French concert poster depicting Hungarian folk orchestra; autographed theatre posters from "The Producers", "La Cage aux Folles", and "Urinetown, the Musical"; two pages of Continental illuminated sheet music or antiphonals;

1940s dance squad photographs and sheet music illustration; Lawrence Beall Smith and Charles Wheeler Locke lithographs depicting opera events, etc. **Dolls:** Jules Steiner "A" doll, 30" l.; Jumeau Bebe doll, 28" l.; Steiner Bebe doll, 16" h.; two dolls by Kammer & Reinhardt, first character "Marie", 21" h., and the second #192, 8" h.; K Star R boy; 20<sup>th</sup> C. Albert Marque reproduction doll; 20<sup>th</sup> C. hand puppets incl. two Anna Marita; 16" Ethnic Russian doll; Ideal Shirley Temple doll in original dress; Heubach Koppelsdorf #312, etc. **Antique Firearms:** 1864 Sharps carbine; 1864 Springfield; 1863 Springfield Trapdoor rifle; 1884 Springfield Trapdoor carbine; two rolling block rifles, one Remington Argentina, the other w/Egyptian markings, etc. **Oriental Rugs:** Antique: Persian Sarouks (2); painted Sarouks (3); Kilim fragment, etc. **Semi-Antique:** Persian Hamadan, etc. **Modern:** Oushaks (4); Agra Serapi; Peshawar Sultanabad; Uzbek Kazak; Serapi; Modern Chinese & Indo, etc. **Glass:** late 19<sup>th</sup> C. tantalus containing ten hand-painted enamel decanters & two stemmed glasses; Tiffany Favre finger bowl w/scalloped rim, 4" dia., & salt cellar; pair Hawkes cut glass & sterling decanters; 19<sup>th</sup> C. 3-pc tested silver and cranberry cut to clear glass centerpiece set comprised of epergne & pair tazzas; Loetz type vase, 9" h. and other art glass; Waterford "Lismore" stemware (22 pcs); Scottish & Murano type cased glass paperweights & cameos in crystal, four from Colin Terris & Peter Holmes "Planet" Series (24); pair 3-light candelabras; 19<sup>th</sup> C. stained & leaded glass window depicting Jacques Cartier and his 1535 Canadian expedition, 27" h. x 18" w.; Baccarat animal figurines; Orrefors, etc. **Northwood amethyst carnival glass:** "Many Fruits" punch bowl, 12" dia.; "Singing Birds" mugs (6); "Grape & Cable": punch bowl, hairline, 16" dia.; stand; hatpin holder; biscuit jar; creamer; bowl, etc. **Clocks:** Late 19<sup>th</sup> C. French figural mantel clock & pair 5-light candelabra garnitures, mantel clock sculpture based on "Le Reve" by Auguste Moreau, 24" h.; 19<sup>th</sup> C. gingerbread clocks (2), etc. **Ceramics:** Gilede & Walker "Melbourne" brown transferware partial dinner service (16 pcs); 19<sup>th</sup> C. Staffordshire well platter, 21" l.; Royal Doulton "Strasbourg" tea and coffee service (7 pcs); Boehm, Goebel, and Beatrix Potter birds (25); Royal Copenhagen; Royal Doulton; Royal Crown Derby; Royal Worcester; Meissen; Christian Dior "Marbre Rose" partial dinner service (50 pcs), etc. **Roseville:** "Water Lily" jardiniere and pedestal; "Clematis" jardiniere and pedestal; "Florentine" umbrella stand and sand jar, etc. **Important Misc.:** signed Presidential miniatures, each w/c on porcelain or ivory, depicting Washington, Jefferson, Jackson, Lincoln & others; antique carved mother-of-pearl icon depicting Last Supper, 8" dia.; Nestor Martin reticulated parlor stove, cast iron w/green enamel finish, 35" h.; late 19<sup>th</sup> C. Thomas A. Edison Home Phonograph & cylinders; mid-20<sup>th</sup> C. Halloween decorations incl. papier mache jack-o-lanterns, noisemaker, and illustrations; early to mid-20<sup>th</sup> C. Christmas mostly glass ornaments (14 pcs); Tyfon brass fog horn, 23" h.; Singer model 221-1 Featherweight portable electric sewing machine; early 20<sup>th</sup> C. Western Electric telephones; stereoscope & slides; magic lantern slides; black Americana memorabilia incl. produce labels; desk accessories incl. figural inkwells; grain painted bucket and red painted firkin; Tydol Gas & Veedol Oil 1929 advertising calendar commemorating Commander Richard Byrd's Antarctic Expedition; painted product and store signs, etc. **Bookends & Doorstops:** Hubley; terrier & Pekinese bookends; flower basket; Dutch children kissing; others by Albany Foundry; Frankart; Jennings Bros.; Verona, etc. along with stage coach, Spanish galleon, windmill, figural & Boston terrier doorstops, etc. **Architectural:** stone Fleuree cross ornament, 23" h.; pierced wooden cornice trim, 2" h. x 8" w.; carved & gilt pediment trim; three carved stone gargoyle heads, 8-9" h. **Religious:** antique carved mother-of-pearl icon depicting Last Supper, 8" dia.; carved painted sculpture depicting Pope John Paul II, 37" h.; Spanish colonial santos of Saint Joseph, 12" h.; early 20<sup>th</sup> C. Russian icon of Saint Nicolas, etc. **Asian:** soapstone and bronze vases (3); Imari; cloisonné, etc. **LOCATION:** 20 mins. west of Hartford, CT. Approx. 2 hours. from NYC or Boston. **I-84W:** exit 33 to Rt. 72W to exit 2, left onto 372W, first right onto Cooke St., 2nd drive on left; **I-84E:** exit 34, left onto Crooked St., left onto 372W, after 6/10 mile take right onto Cooke St., 2nd drive on left. **TERMS:** 20% Buyer's Prem., MC/VISA/DISC, Cash, Approved Checks; Absentee, phone and on-line bids accepted.

