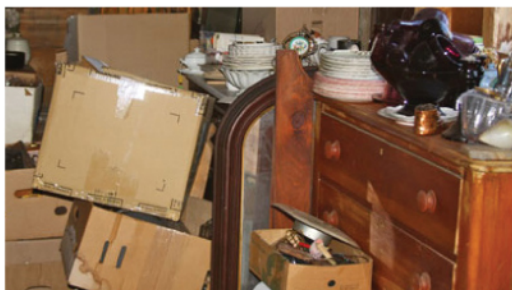


HUGE MEGA ONSITE ESTATE AUCTION WITH NO ADDITIONS

MAY 21, 2016 AT 10:00 AM

Borders Farm, 31 North Road, Foster, Rhode Island
Showing will be the same day of the Auction 8:00 -10:00 AM

This estate is packed with antiques that have not been seen for years. We will be selling from the large red barn. Everything must go and to be sold in large lots, so bring a truck and packing boxes. Large selection of primitives, early country, old bottles, extensive collection of early American pattern glassware, early lighting & parts, paper goods, antique linens, ironware, furniture, country rugs, blanket chests, jewelry, early transfer ware, milk glass, antique hinges and hardware, and much, much more too numerous to mention.



See Auctionzip.com for 100's of colored photos
Auction will be held in the big red barn and a walk around outside under a tent

Auction will be Catered

Always Looking for Quality Estates
From One Piece to Entire Estate

TERMS of Auction: 12% Buyers Premium with
Cash or Check 15% with Major Credit Cards

Dealers must have copy of resale certificate. Any question please call:

401-647-4447 or Email: Tiffbritt1@aol.com



TIFF • BRITT ANTIQUES & AUCTION SERVICES
AUCTIONEER: JOHN FUSCO R.I. LIC# 0192