

FINE ART & ANTIQUES AUCTION

Saturday, June 11th, 2016 Noon • Preview 10:00 AM.

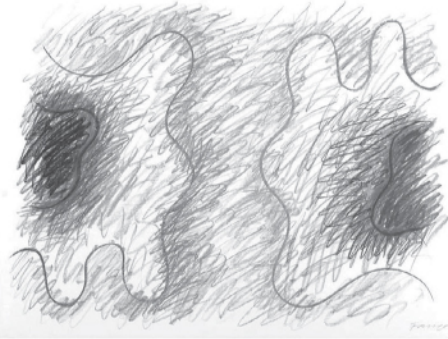
At South Bay Gallery, 485 Main Street, East Moriches, L.I., N.Y.

Preview Hours: Sunday, Monday & Friday, June 5th, 6th & 10th, 11am-4pm & Day of Sale: 10am-noon

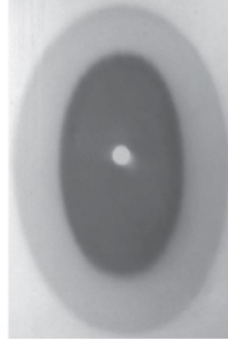
Fully illustrated on-line catalog: www.southbayauctions.com



COSTANTINO NIVOLA
(American, 1911-1988),
terracotta. 1/2"h, 5"l, 2-3/4"w.



WOJCIECK (VOY) FANGOR
(Polish, 1922-2015),
pastel on paper. 20"h, 28"w.



STANLEY TWARDOWICZ
(American, 1917-2008),
acrylic on canvas. 70"h, 48"w.



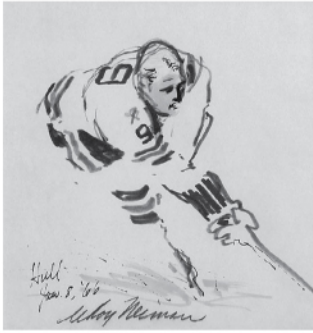
ROMARE HOWARD BEARDEN
(American, 1911-1988),
serigraph in colors. 12-1/2"h, 16-1/4"w.



DIEGO GIACOMETTI
(Swiss, 1902-1985),
bronze. 12"h.



After **FREDERIC S. REMINGTON**
"Roman Bronze Works".
22-3/4"h, 17"l, 10"w.



LEROY NEIMAN
(American, 1921-2012),
mixed media. 11-1/4"h, 10-3/4"w.



JOSEPH HIRSCH
(American, 1910-1981),
oil on canvas. 22"h, 28"w.



GEORGE GROSZ
(German, 1893-1959),
ink and charcoal. 23"h, 17-1/2"w.



BERENICE ABBOTT
(American, 1898-1991),
gelatin silver print. 8"h, 10"w.



HENRI VICTOIRE FRADELLES
(British/French, 1778-1865),
oil on panel. 13-1/2"h, 17-3/4"w.



ALFRED PIERRE RICHARD
(French, 1844-1884),
pair of bronze figures. 24"h.



FRANZ GRASSEL
(German, 1861-1948),
oil on panel. 6-1/2"h, 8-1/2"w.



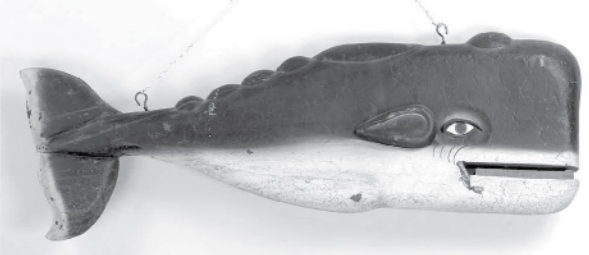
EMILE LOUIS PICAULT
(French, 1833-1915),
bronze. 30-1/4"h.



Japanese bronze camel
(early 20th century),
signed. 12"h, 13"l.



Roulet et Decamps
musical automaton.
16"h.



Full body painted tin whale
trade sign.
13"h, 38"w, 4"d.



MARILYN NEWMARK
(American, 1928-2013),
bronze. 12"h, 10-3/4"l, 4"w.



EDWIN SCHEIER (1910-2008)
and **MARY SCHEIER (1908-2007)**,
early glazed pottery bowl 4-1/2"h, 10"dia.



18C American
maple highboy.
71-1/2"h.



FRANCOIS LINKE
kingwood vitrine.
58"h, 26-1/4"w, 14-3/4"d.



18k Patek Philippe Ellipse
men's wrist watch.



Large Gorham sterling silver
loving cup trophy.
14"h, approx 117 troy oz.



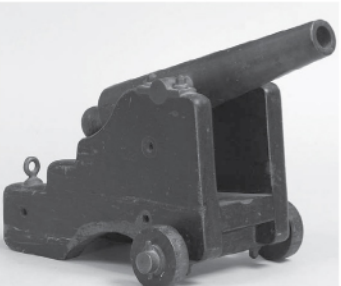
800 silver German bear,
Wilhelm Weinranch, Hanau.
10"h, approx. 37.2 troy oz.



KPM porcelain plaque,
Queen Louise.
8-1/2"h, 5-3/4"w.



19C bronze mounted
turquoise glass cornucopia,
14-1/2"h.



LAVIGNE & SCOTT
bronze signal cannon,
"Columbia Yacht Club 1895"
12-1/2"l.



19th century scrimshaw whale's tooth,
inscribed "Free Trade and Sailor's Rights", 8"l.



BRANDER & POTTS, London
Cased Pair of Percussion Pistols.



1957 Whirlwind Deluxe 16' Runabout,
1965 60 horsepower Evinrude,
with trailer.



SOUTH BAY AUCTIONS, INC.

485 Main Street/PO Box 303, East Moriches, NY, USA 11940
631-878-2909 • info@southbayauctions.com • www.southbayauctions.com