

**clars**  
Auction Gallery

# Fine Art & Antique Auction May 21-22

Visit us online at [www.clars.com](http://www.clars.com)

email: [info@clars.com](mailto:info@clars.com)

**888.339.7600** (toll-free)

**510.428.0100** (local)



Lorraine Shemesh  
(American, b. 1949),  
"Criss-Cross,"  
1995, oil on canvas,  
64.25" x 85.5"

Provenance: The Collection of Allan Stone

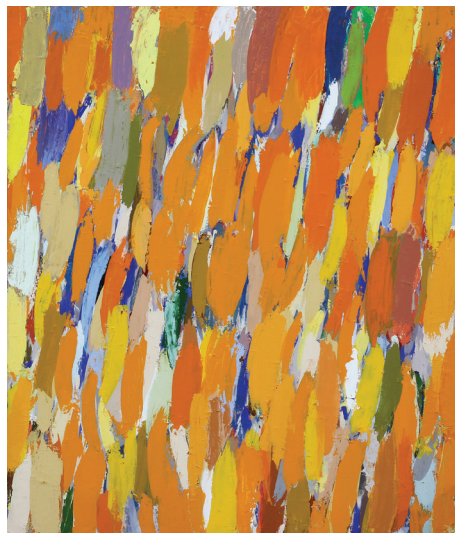


Stephen Cornelius Roberts  
(American, b. 1952),  
"Painting of LM,"  
1990, oil on linen,  
90" x 80"

Provenance: The Collection of Allan Stone



Gordon Onslow Ford  
(American/British, 1912-2003),  
"The Other Shore," 1965,  
Parle's paint-acrylic on canvas,  
48" x 36" (1 of 2)



Kazuko Inoue  
(Japanese, b. 1946),  
Untitled,  
1987, acrylic on canvas,  
80.25" x 68.38"

Provenance: The Collection of Allan Stone



Robert Kelly  
(American, b. 1956),  
Untitled,  
1999, oil on canvas,  
72" x 54"



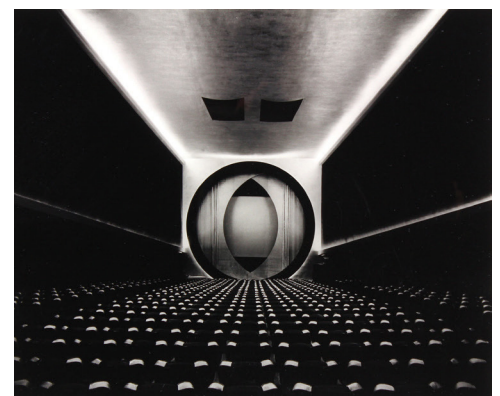
Auguste Herbin  
(French, 1882-1960),  
"Mouvement Coloré,"  
gouache on paper,  
12.5" x 9.5"



Edwin Long  
(British, 1829-1891),  
Claudius Appears Before the Senate,  
1869, oil on canvas,  
34" x 62.5"



William Merritt Chase  
(American, 1849-1916),  
Still Life with Fish,  
Apple and Bowl,  
oil on canvas,  
17.5" x 23.5"



Ruth Bernhard  
(American, 1905-2006),  
"Eighth Street Movie Theater,  
Frederick Kiesler, Architect,"  
1946, selenium-toned gelatin silver print,  
9.75" x 13.5"  
Important photography collections featuring gelatin  
silver prints from The Art Institute of Chicago

5644 Telegraph Avenue, Oakland, CA 94609

Live and Online Bidding  
**clars LIVE**  
A U C T I O N



# Fine Art & Antique Auction

email: [info@clars.com](mailto:info@clars.com)  
**888.339.7600** (toll-free)  
**510.428.0100** (local)

## May 21-22

Visit us online at [www.clars.com](http://www.clars.com)

# clars

Auction Gallery



Pair of Chinese cloisonné enameled elephants, 9.5"l



Rare pair of Chinese automaton triple fusee bracket clocks, 32"h



Selection of Chinese jade vessels



Rare steam assisted ship's wheel steering mechanism model, 19th century, part of a large collection of 19th century steam models from an important Peninsula, CA collection



Important Viennese enamel and gilt silver Nef boat, having a mermaid support, 22"h



Viennese enamel and silver vases, each having a baluster form and decorated with classical figural scenes, 19th century, 11"h



Russian enamel decorated icon depicting Iveron Mother of God, by Ivan Khibnikov, 15"h x 13"w overall



Duffner and Kimberly leaded glass table lamp, early 20th century, 22.5"h x 15.5" dia.



Philip and Kelvin LaVerne patinated bronze low table depicting stylized Modernist figures, 16"h x 60"w x 26"d



Antique Serapi carpet, circa 1900, 8'6" x 11'7" (one of two to be offered)



Cased pair of 19th century Belgian percussion target pistols



Danish Georg Jensen sterling silver flatware service for twelve in the "Cactus" pattern, having nine pieces per place setting, 118.05 Troy oz.



Architectural column fragment, original to the Palace of Fine Arts, San Francisco, and designed by Bernard Maybeck for the 1915 Panama Pacific International Exposition, 44"h x 28"w



Trader Vic, aka, Victor J. Bergeron (America, 1902-1984) 'Dolphins' patinated bronze figural sculpture, commissioned for California Academy of Sciences, 49"h x 48"w



Gentleman's Rolex Day-Date President 18k yellow gold wristwatch, ref: 1803, circa 1959



Lady's Patek Philippe Twenty-4 diamond and stainless steel wristwatch



George III silver and cut glass epergne, Birmingham, 1802, by Matthew Boulton, 13"h



American Tiffany & Company sterling silver hollowware suite, 1907-1938, executed in the Colonial Revival style, 275.73 Troy oz.



Pair of diamond and platinum double clip brooches, total diamond weight approximately 9.35 cts.