

Winter Associates

Auctioneers & Appraisers

AUCTION: Mon., April 18th, 6:30 pm

Previews: April 17th, 2 - 4 pm; April 18th, 3 - 6:15 pm or by appt.

Fine Art & Prints, Continental Furnishings & Accessories, Silver, Jewelry, Asian, Glass, Textiles, Oriental Rugs, Etc.

View catalog online at www.AuctionsAppraisers.com



French Style; Tapestry



Anthony Thieme, oil, 19" x 23"



Tiffany, Redlich



Sterling Repousse



Tiffany & Co.



Musical Viennese, 7" h.



Sevres "Fontainebleau" (120 pcs)



A. Pineda & Deco



Frits Goosen, oil, 16" x 23"



Della Robbia Style



Jan Spohler, oil, 19" x 24"



Chippendale Style



M. Colin, oil, 12" x 9"



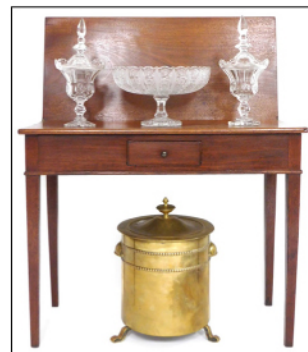
Museum Deaccessioned Textiles



Asian



John Steuart Curry, litho., 10" x 14"



Georgian



Louis XV Style, 105" h. x 137" w.



Antique Sarouk' 24' x 14'



Louis XVI Style Suite (1 of 3)



Adrianus Volkers; Louis XVI Style

Fine Art & Prints, Continental Furnishings & Accessories, Silver, Jewelry, Asian, Glass, Textiles, Oriental Rugs, Etc.
Fine Art: Achille Bozzato oil; Luigi Cagliani oils (7) incl. one 50" h. x 60" w.; George M. Clark oil; Maximilien Colin oil; August Wilhelm Dencker oil; Urs Eggenschwyler oil; Sears Gallagher w/c illustration depicting "Orientalist" scene; Frits Goosen oil; Adrianus Johannes Groenewegen w/c; Marion Huse oils & w/cs (5); Eric Jean-Louis acrylic; Maria Veronica Liszt oil; Janice Loeffler oils (3); Jan Jacob Coenraad Spohler oil; Anthony Thieme oil & w/c, both depicting harbor & boat scenes; Adrianus Volkers oil; George Willis-Pryce oil; possibly Alys Harper Stone oils (2); 18th C. Continental School oil depicting figures in garden landscape; 19th C. marine scene depicting lighthouse; 19th C. w/c depicting coach & horses; 20th C. pastel depicting Mediterranean landscape; mid-20th C. Continental School mixed media, etc. **Prints:** Peggy Bacon dry-point etching; Carl Oscar Borg etching; Frank Brangwyn etching; Samuel Chamberlain etchings (2); John Steuart Curry lithograph, "Summer Afternoon"; Kerr Eby etchings (2); Francis Seymour Haden etchings (2); Alfred Hutty etching, "St. Michael's Portico"; Franz Marie Melchers lithograph; Mortimer Menpes etching; Louis Orr etching; Herbert Hillier Parker etching; Louis Rosenberg etching; Ernest A. Roth etching; 18th C. mostly architectural engravings by & after Piranesi, Inigo Jones, Rossini, William Hogarth (20); early & 19th C. botanical prints (5); reproduction prints of Old Master subjects by Leonardo da Vinci, Michelangelo, Ghirlandaio & Il Sadoma, etc. **Sculpture:** Peter Tereszczuk ivory & bronze girl, 5" h.; bronze bust of young boy signed "M.M. Banks", 17" h.; Rookwood Pottery bust of young boy, 10" h., etc. **Continental Antiques & Fine Furnishings:** Louis XVI style 3-pc suite incl. settee & pair armchairs, all w/Aubusson upholstery; impressive Louis XV style display cabinet w/natural finish, approximately 107" h. x 137" w. x 23" d.; French style gilt bow front vitrine; Empire style mahogany & glass vitrine; French style dining table w/ cabriole legs; Louis XVI style ladies desk; three French style stands incl. one bombe; Hispano-Moresque style table w/ inset brazier; two-door cabinet w/ fleur de lis carving; two upholstered benches, one kidney shaped, etc. **Other Antiques & Fine Furnishings:** Georgian single-drawer game table; pair Georgian style four-drawer block front chests; Chippendale style triple back settee w/Aubusson set, inlaid settee and side chair; Irish Chippendale style mahogany chairs (10) incl. 2 arm chairs; Renaissance Revival console table; pair Baroque style side chairs w/ red cut velvet upholstery; Hepplewhite style step back demi-lune table, one w/fan inlay, one w/serpentine front; four side chairs with cream and gold star upholstery; Moravian style side chair w/carved portrait in 3/4 profile; six Jacobean style red velvet side chairs; pair cream upholstered lolling arm chairs; Dhurrie or Kilim type flat-weave upholstered bench; barrel chair w/Deco style upholstery, etc. **Garden:** black painted cast metal bench; pair white painted cast-iron side chairs; celadon glazed ceramic garden seat, etc. **Sterling & Coin Hollow ware, Generous Assortment of Fine & Elaborate Pieces from Bloomfield Estate, 40+ lots:** Tiffany & Co. footed asparagus tray w/removable pierced liner; Antonio Pineda 3-light candelabra, stylized floral & vine motif, 10" h.; Redlich & Co. footed compote; 5-pc Towle "Louis XIV" pattern partial tea set; serving dishes by Gorham, Royal Danish, J. Wagner & Son, Howard, Woodside, George W. Shiebler & Co., William B. Kerr & Co. incl. some repousse & other w/fruit or floral motifs; Sanborn water pitcher; Continental loving cup; Dutch chocolate pot; Cartier basket; weighted candlesticks, candelabra, castors & coasters; International Sterling; S. Kirk & Son; Lunt; Towle, etc. **Sterling Flatware & Serving Pieces:** Towle "Louis XIV" pattern (125 pcs); Reed & Barton "Francis I" pattern (92 pcs); Gorham "Marie Antoinette", "Henry II", "Versailles" patterned & other flatware; Tiffany & Co. "Richelieu" punch ladle; Georgian testing sterling ladle w/ebony handle; Cartier sauce ladles (2); Durgin "Chrysanthemum" ice cream forks (12); Reed & Barton; Towle; International Sterling; Whiting; Durgin; Wallace; specialty pieces including fish server, sugar sifter, pair ice tongs, punch ladles, one w/repaid handle, etc. **Silver:** William B. Durgin 10-pc vanity set; 24-pc Mappin & Webb fish service; pair Russian enamel tongs; souvenir spoons; along with elaborate silver plate candelabra, champagne buckets, etc. **Jewelry:** 3 14K chains, one hollow, two fancy link; 6 14K & 18K floral, foliate, cross, & freeform pins; 5 pairs 14K earrings; 14K & cultured pearl pin, ring, & pendant; 14K, 18K, & opal rings & earrings; 14K rings, one set w/lavender jade, the other set w/synthetic sapphire; men's 14K Bulova Accutron watch; ladies' 14K watch, etc. **David Yurman:** two 18K crossover cable rings, one with sterling; Figaro sterling and 18K bracelet; Wheat Chain sterling and 14K bracelet; pair sterling and 14K cable hoop earrings, etc. **Other:** Mexican sterling silver & tested silver necklaces, pins, earrings, cufflinks, etc.; pocket watches, most gold-filled, some w/m-o-p accessories; costume jewelry featuring Britzie Carnegie, etc. **Asian:** Decorative Arts: late 19th/early 20th C. intricately carved ivory horn, 17" h.; 19th/20th C. Japanese bronze sculpture of woman, 10" h.; bronze & hardstone figural groupings; early 20th C. Japanese woven baskets incl. 3 ikebana; 20th C. Japanese obi on wall hanging mount; 19th C. Chinese carved window shutters & decorative panels (5) from opium or wedding bed; Chinese rattan lift top chest; red lacquer lunch box, etc. **Ceramics:** pair 19th/20th C. Chinese

Famille Verte covered garnitures, 16" h.; 19th/20th C. Chinese Famille Verte octagonal wedding box; early 20th C. blue & white hibachi, 15" dia.; numerous vases converted into table lamps incl. cloisonné, rice barrel, chrysanthemum, tobacco & fruit motif, etc.; celadon glazed garden seat; 3 Kutani sleeping cat figures, etc. **Art:** Rakusan Tsuchiya woodblock prints (4) from "Rakusan's Flower & Bird Print Series"; post WWII Japanese 4-panel hand-painted folding table screen & 2-panel floor screen; pair 20th C. Chinese ancestor portraits, etc. **Furniture:** late 19th/early 20th C. Chinese cedarwood altar table; 20th C. Chinese side table w/ carved bas relief of crane at top center; late 19th/early 20th C. lacquered trunk on stand; 19th C. Chinese Export bamboo console table; red finished etagere carved w/chrysanthemums, etc. **Glass:** Steuben "Sword in the Stone" motif boxed letter opening set w/sterling & 18K decoration; two similar Anglo-Irish cut glass covered sweetmeat or bonbon urns; pair Baccarat type barley twist candle sticks; Bohemia cut glass centerpiece or punch bowl, 13" dia.; Venetian & art glass; Luciana Roselli round serving platter w/stylized woman w/birds; Waterford; Orrefors; Hawkes; Rosenthal; Galway; Tyrone; Webb; Swarovski; clear cut as well as ruby cut to clear glass; late 19th/early 20th C. stained glass window mounted in custom light box, 81" h., etc. **Lighting:** Continental style painted 7-light chandelier; pair 19th C. Staffordshire seated lion lamps; pair wallpaper roll lamps; pair carved alabaster lamps w/ heraldic motifs, etc. **Textiles & Vintage Accessories:** mid-19th C. convent school girl needlework on silk depicting Virgin & Christ w/St. Anthony of Padua; large assortment of museum deaccessioned mostly late 19th/early 20th C. velvet, cut velvet, tapestry, & chintz draperies incl. sets curtains and cornices; large assortment of tablecloths, place mats, napkins, & handkerchiefs, some matching sets, some embroidered; nine ladies handbags by Fendi, Givenchy, Osprey, Picard, Lord & Taylor, etc.; mid-20th C. yellow silk clutch w/22 natural emeralds; Kim Seybert (NYC) beaded table runner; mid-20th C. infant clothing incl. christening gown, bonnets, etc. **Oriental Rugs:** Antique: Persian painted Sarouk carpet, 24' x 14', etc.; Semi-Antique: Persian Hamadan (3), etc. **Modern:** Bakshaish; Oushak; Uzbek Kazak; Serapi (3); Bijar; Persian style; Indo-Persian Kazvin design, etc. **Clocks:** Tiffany & Co. quarter strike nine tub tall case clock, 78" h.; 20th C. Viennese enamel and gilt bronze 3-panel musical clock, 7" h.; late 19th C. French brass cartel clock, elaborately decorated case featuring swans, cherubs, etc. **Ceramics:** Louis Phillippe Sevres "Chateau de Fontainebleau" pattern dinnerware (120 pcs); late 19th/early 20th C. Della Robbia style 2-pc wall plaque depicting Mary & Christ child, 46" h.; early Continental or English limari palette dinner service (38 pcs); Bing & Grondahl "Seagull" pattern partial dinner service (62 pcs); Herend as well as B & G animal fishnet & human figurines, boxes, vases, etc.; Flight Barr & Barr; Lladro; Royal Doulton; Rosenthal; Royal Copenhagen; Meissen "Blue Onion"; Lenox; Augarten Wien; Porzellanfabrik Metzler & Orloff; Wedgwood; Anton Lang bowl w/matching liner; Capodimonte type; mid-20th C. Hummel figurines incl. pair "Farm Boy & Goose Girl" bookends (8 total); early porcelain figurine depicting woman reclining on recamier bearing gold anchor mark; 19th C. Trent porcelain tiles (2); Hutschenreuther, Bavaria porcelain plates & chargers; Rookwood Pottery bust of young boy, 10" h.; 32-pc soft paste porcelain centerpiece & table decorating accessories; Royal Crown Derby "Vine" pattern partial dinner service (40 pcs); Adams Titianware partial dinner service (37 pcs), etc. **Coins, Medals, & Stamps:** 1876 U.S. Centennial Expo bronze medal; small collection of mixed U.S. & world coins & currency; colored prints by Robert K. Abnett, John A. Ruthven, & Lee H. Stronck, some w/corresponding stamps; four International Quail Research Foundation prints by Maynard Reece, David A. Maass, & Owen J. Gromme, etc. w/corresponding stamps; large personal postcard & stamp collection incl. small collection of Russian stamps, c. 1970s-80s. **Important Misc.:** Tiffany Studios "Zodiac" pattern bronze dore 4-pc desk set; 20th C. Russian lacquered boxes (13); late 19th C. Swiss music box; numerous sconces, some mirrored & electrified, incl. metal sword form, scroll, floral, fleur de lis, strawberry, etc.; wall decoration incl. Rococo style mirror, pair demi-lune wall shelves w/feather plume bases, bronze shield wall plaque, ram's head ornament, architectural elements, curtain tiebacks, etc.; mid-20th C. U.S. Air Force & General Electric commemorative accessories incl. ashtray, table lighter, & bookends; Halcyon Days, Staffordshire, Crummlies & Limoges enamel & porcelain patch boxes; 8 1/2" h. bisque Kammer & Reinhardt 192 girl doll wearing original garments; 8" h. K Star R boy marked with number only; 19th C. trinket box w/hand-painted porcelain plaque; brass fireplace accessories incl. coal hod, watering can, trivet, etc.; 19th C. English lap desks & glove boxes (5); carved alabaster compote w/fruit; wax relief bust portrait behind glass; 20th C. Austrian cold-painted bronze figurine of explorer on camel, 4" h., etc. **LOCATION:** 20 mins. west of Hartford, CT. Approx. 2 hours. from NYC or Boston. **I-84W:** exit 33 to Rt. 72W to exit 2, left onto 372W, first right onto Cooke St., 2nd drive on left; **I-84E:** exit 34, left onto Crooked St., left onto 372W, after 6/10 mile take right onto Cooke St., 2nd drive on left. **TERMS:** 20% Buyer's Prem., MC/VISA/DISC, Cash, Approved Checks; Absentee, phone and online bids accepted.

