

STANTON AUCTIONS

IMPORTANT AMERICANA AUCTION

SATURDAY APRIL 30TH AT 10AM

106 EAST LONGMEADOW RD., HAMPDEN, MA 01036

TELE: 413-566-3161... EMAIL: INFO@STANTONAUCTIONS.COM

PREVIEW: SUNDAY NOON-3PM; MON-FRI 10AM-4PM; SATURDAY (day of sale) 8:30AM-10AM

SEE 100'S OF PHOTOS ON OUR WEBSITE: WWW.STANTONAUCTIONS.COM & A COMPLETE PHOTOED & NUMBERED CATALOG ON WWW.LIVEAUCTIONEERS.COM

SUPERB SALE with the MOST local fresh-to-the-market merchandise we've had in some time! Historical registered homes from right here in Hampden & just across the line into East Longmeadow plus private collections from homes all over MA & CT have produced a diverse selection of great quality & quantity antiques! Important PERIOD FURNITURE; GREAT FINE ART; CLOCKS; TREEN; JEWELRY; ORIENTAL RUGS; WEATHERVANES; ART GLASS, POTTERY & PORCELAIN; EARLY LIGHTING; ORIENTALIA; ANTIQUE TOY, DOLL & CHILD RELATED; RARE DOORSTOPS; LOUIS VUITTON; WWI POSTERS; MUSIC BOXES; PHOTOGRAPHICA; TEXTILES; GARDEN ANTIQUES; SCULPTURE; ADVERTISING; NATIVE AMERICAN; SHAKER; VICTORIAN FURNITURE TO ART NOUVEAU TO ARTS & CRAFTS & WAY TOO MUCH MORE TO LIST HERE! Proceed to our internet sites for all the detail you will need & DON'T MISS THIS SALE!!!



Great pr of period Chippendale ca 1760-1780 fine & rare carved mahog ball & claw ft Salem or Marblehead, MA sidechairs - Exceptional!



Fine estate jewelry incl Antique Tiffany 18KT yellow gold ladies diamond and blue enamel pendant watch w/ matching 18KT bow pin & 2 beautiful vintage Art Deco ladies pins set w diamonds - See our internet sites for full details on these fine pcs



Important pr of period QA ca 1750-1770 Boston or Salem MA mahogany side chairs in the manner of Nathaniel Gould w crest rails featuring demi-lune carved shells & upswept carved ears, pierced splats w C scrolls & over upholstered seats on cabriole legs ending in high pad feet - outstanding! - 17 1/2" seat height



William Henry Lippincott (1849-1920) 18"x24" o/c fine impressionist landscape in carved & gessoed vintage frame



Important pr of 27"x22" o/panel folk art portraits attrib to John S. Blunt (American 1798-1835) of John Bachelor Bull & Caroline Philbey Bull of Brooklyn, NY ca 1830 descended in the Pooler family of NJ in Vict era deep walnut frames w gilt liners - (family genealogy research accompanies the portraits)

Period bracket case tall clock w fretwork crest & brass finials marked H. Chamberlain, Norwich(?) - fresh out of a registered Historical home on Main St here in Hampden, MA plus a Great period Hepplewhite ca 1790-1810 School of Simon Willard carved mahog & satinwood inlaid Roxbury, MA tall case clock w decorated dial attrib to John Ritto Penniman (1782-1841) - Superb!



Most important early American carved mahog Shepherdess attrib to Samuel McIntyre or Simeon Skillin. The same sliding dovetailed keyway construction that appears on Eastern MA blockfront furniture is evident on the underside of the base. In graphite on underside appears the name E.H. Derby which may indicate that it came from the Elias Hasket Derby mansion in Salem, MA - authentication from a Smithsonian Museum Curator - The best American carved figure we have ever seen - 23 1/4" tall



Extremely rare & very early ca 1700-1720 Wm & Mary period PA or NJ stretcher based lowboy w orig top, legs & feet as well as brasses in hard pine, pine & oak - descended in the Stokes Family from Princeton, NJ - a very rare survivor - refinished about 40+ years ago - 26" case width



Excellent 19thC cast iron dbl horse drawn ladder truck w 2 fireman drivers in excellent orig paint - 25 1/2" long - found in a Forest Park area (Spfld, MA) attic



Superb period Chippendale ca 1755-1775 highest quality carved Cuban mahog Boston pie crust tea table in completely orig cond featuring spectacular carved shaft, knees & ball & talon feet



Important period Chippendale ca 1750-1765 fabulously proportioned desirably diminutive highest quality Cuban mahog Boston block front kneehole dressing table w orig brasses, locks & comb drawer in great surface possibly by George Bright (Boston 1727-1805) - The best Boston kneehole we've ever sold! 33" case width!



Ca 1880's 800 silver elaborate form sleigh w cherub head front - 6" long; very fine quality probably German (marked indistinctly on verso) 6"x4 1/4" portrait on porcelain of attractive young lady w lit chamber stick titled "Good night" & a Wonderful sgnd Tiffany miniature green irid glass vase w gold pulled feather dec - 2 1/2" tall



Alfred Daniels (1924 -) wonderfully graphic 48"x26" o/masonite of a multi figural outdoor card tournament dated 1955



Outstanding QA period ca 1780 NH Dunlap School maple & pine high chest in great orig cond & period brasses - one of the earliest & most diminutive of all Dunlap case pcs featuring very rare tall cabriole legs & elaborate scrolled apron - 60 1/2" tall



Wonderful & rare period QA ca 1770 Deerfield, MA carved cherry chest on chest on frame in completely orig structure & period brasses attrib to Benjamin Munn III (1738-1824) - 79" tall



Great period Chippendale ca 1760-1780 North Shore MA carved black walnut secretary - 82" tall



Fine group of WWI Red Cross Posters -Provenance: From the Penelope Terry Abbey Chapter, National Society Daughters of the American Revolution in Enfield, CT, recently found rolled up while relocating a cabinet which had been in Enfield's Pearl St. Library since 1922



Extremely fine & rare QA period ca 1755 high quality carved Cuban mahog lady's pole screen attrib to John Welch of Boston, MA in old surface w orig rare needlework depicting multiple marriages within the same family

STANTON AUCTIONS



18thC CT cherry single drawer dropleaf stretcher based butterfly table – See our internet sites for 25 period tables



Very fine sterling, turquoise, coral, etc antique Southwest jewelry



Beautiful period Hepplewhite ca 1790-1810 mahog Baltimore Pembroke table w extensive inlay – See our internet sites for more Period Pembrokes



Great Art Nouveau carved golden oak 3 door over 2 drawer armoire w triple beveled mirrors incl full length mirrored center door plus Vintage Arts & Crafts oak sliding 2 door bkcase in orig finish



Period Chippendale ca 1755-1775 finest quality carved Cuban mahog Providence, RI 4 dr oxbow chest w blocked ends & orig brasses on powerful ball & claw feet - 38 1/4" case width - See our internet sites for all 25 period case pieces



Ca 1870 brass birdcage automaton featuring 3 feather birds in excellent working cond (singing birds) probably French & an antique Jacot's pat'd 1886 cylinder music box - inlaid case - fine working condition



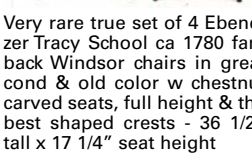
Rare ca 1920 pine carved & iron graphic silhouette form fireman holding an iron hose weathervane in orig paint & excellent orig cond - 22" tall x 23" wide & ca 1900 heavy gauge sheet iron rare steer head weathervane in great early paint, patina & surface - a nice diminutive example found in Texas in excellent untouched orig cond - 6 3/4" x 11 1/2" – See our internet sites for many more weather-vanes & related



Fine 8'9"x12'2" Antique Persian Kashan Oriental rm size rug (fresh out of an Enfield, CT home) – See our internet sites for 30 more fine Oriental Rugs!



Extremely fine & rare very early Continental carved black walnut valubles chest - 22" tall x 24" wide x 11 1/2" deep



Very rare true set of 4 Ebenezer Tracy School ca 1780 fan-back Windsor chairs in great cond & old color w chestnut carved seats, full height & the best shaped crests - 36 1/2" tall x 17 1/4" seat height



Wonderful period Chippendale ca 1780 wing chair w 18thC tapestry upholstery & a GREAT period Hepplewhite ca 1790-1810 Salem or Boston, MA carved mahog wing chair in fine antique crewel embroidered upholstery – See our internet sites for more period upholstered & some 40 period chairs in all



Classical early 19thC Boston or NYC 26" round girandole mirror w outstanding carved eagle crest & early gilded surface plus a very fine & extraordinarily lg QA period 18thC parcel gilt & carved walnut courting mirror - 45" tall- See our internet sites for many more period mirrors



2 George Sumner Colman (1881-1934) impressionist oil paintings incl a 22"x16" o/c landscape w eucalyptus trees & a 10"x7" o/bd of a docked ship both in fantastic vintage Arts & Crafts frames



Wonderful QA ca 1770 Wethersfield, CT maple lowboy featuring beautifully scalloped skirt w cupid's bow center, shell carved drawer, shaped & molded top & graceful cabriole legs ending in well padded duck feet - 28 1/2" case width



Mary Ethel Young Hunter (1872-1947) 27 1/2" x 19 1/2" o/c - this painting exhibited in the exhibition of the Royal Academy of Arts in 1900 listed as #841 & titled "The Duke's High Dame" - the painting illustrates the story from the Volsunga Saga



2 Fine Samuel Bell Waugh (1814-1885) oval o/c portraits of young women dated 1866 in spectacular carved & gilded orig frames w sand finish & applied dec liners



Rare lot of 4 vintage Lindberg kidnap posters, etc - "Wanted" poster is 16"x9 1/2"



Rare lot of 4 vintage Lindberg kidnap posters, etc - "Wanted" poster is 16"x9 1/2"



Outstanding mid 19thC Nautical carved bone, etc & silver 33" tall cane – from a GREAT Nautical collection



Excellent period Chippendale ca 1755-1775 New Haven CT carved black walnut linen press on powerful ogee bracket base & featuring reeded quarter columns – See our internet sites for all 25 case pieces



Period Sheraton ca 1800-1815 Philadelphia carved mahog 8 legged sofa w reeded crest, arms & legs in beautiful blue damask upholstery - 80 1/2" long – See our internet sites for more period upholstered



Just a glimpse at the vast & wonderful collection of TREEN incl sgnd Voorhees (1911-1980) Killer Whale; 36" long carved early 20thC American Eagle; Great painted ca 1800 valubles box & a rare lg pr of 19thC PA Springerle boards – See our internet sites for full details on these & the rest of this great TREEN collection incl gameboards, signs, boxes, buckets, bowls, baskets, decoys & other carvings, etc



Fabulous condition private collection of authentic designer bags incl Louis Vuitton, Chanel & Gucci



Excellent period Hepplewhite ca 1790-1810 carved mahog & exotic wood inlaid Boston tambour desk on flared French feet w orig brasses & locks w a number of structural features & details associated w John Seymour – See our internet sites for 5 more period desks



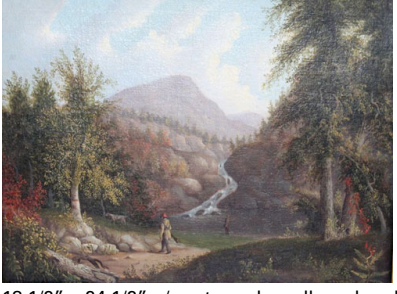
Excellent early QA period ca 1725-1750 carved maple flat top high chest (highboy) w rare orig removable legs, finish, brasses, returns, etc attrib to Benjamin Frothingham of Charlestown, MA (Boston) - 70 1/2" tall



Period Hepplewhite ca 1790-1810 carved mahog serpentine front sideboard in completely orig cond incl brasses attrib to the workshop of Edmund Johnson of Salem, MA



Showing 4 of the 8 great period candlestands incl these QA CT & MA examples in tiger maple, cherry & butternut incl attrib Nathan Lombard (Sutton, MA) & a sgnd & dtd 1800 Thomas Walbridge example w through cleat drawer – See our internet sites for full details on these & 4 more



18 1/2" x 24 1/2" o/c extremely well rendered View of MT Adams from the Glen featuring hunter w dog & fisherman in wonderful carved & gilded vintage frame



Very nice ca 1760 CT cherry & pine Chippendale period corner cupboard w orig glass panel top door & raised panel bottom featuring reeded column molding & good old color & surface - 76 1/2" tall x 46 1/2" wide – See our internet sites for 5 more period cupboards



Elmer Stanley Hader (1889-1973) 18x24 o/c multi-figural religious procession through village streets titled "The Procession..." dtd 1913

STANTON AUCTIONS



Ca 1880-1900 well detailed 12"x16" o/c of a steam packet paddlewheeler sgnd J. Corbett



George Riecke (NY 1848-1930) 12"x18" o/c of sheep & chickens in a barnyard in outstanding ornate carved gilded frame



Collection of 4 fine turn of the century cast iron windmill weights by Elgin Wind Power & Pump Co, Elgin, IL in orig colorful polychrome paint



Incredible & very large paddle wheeler boat model of the Robert E Lee in wonderful orig condition paint & cond made by Peter Nadrowski (1911-2006) - 68" long x 25 1/2" tall (Nadrowski has models in several museums)



Wonderful 20"x36" o/c w silk needlework on applied velvet portrait of a yacht flying an American flag from stern w figures on board



Period QA 18thC mahog fan carved bonnet top highboy on graceful cabriole legs - 81 1/2" tall



Set of 6 period early 19thC New England tiger maple sabre leg, vase back side chairs w rolled crests & caned seats - approx 40 period chairs in this sale in sets, pairs & singles



Showing some of the fine period Windsors incl New England sack back in fine green & bow back in Spanish Brown paint as well as an unusual form PA fan back armchair w remnants of brown paint



Outstanding Wm & Mary ca 1725-1745 Boston black walnut stretcher based dish top tea table w shaped apron & wonderful turnings - See our internet sites for all 25 period tables



19thC 2 part campaign chest w brass hardware - 39" tall x 38 1/2" wide x 19" deep



Wonderful lg signed Minton antique Parian sculpture of Hebe & Jupiter (Jupiter as Eagle) on attached wooden carved base - 25" wide x 17 1/2" tall & sgnd Pietro Bazzanti (1842-1881 Florence) marble sculpture of St. Cecilia - 13 1/4" x 5 1/2"



Extremely rare Pilgrim Century ca 1670-1690 North Shore MA joined bed steps in maple & oak - found in Essex County - fantastic early design & cond - 26" tall x 22 1/2" deep x 23" wide



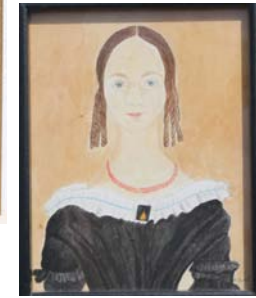
Coastal CT 7 dr (5 level) ca 1710-1730 pine tall chest w pinwheel carved central drawer & dramatic shaped bracket base - 50" tall x 39" wide x 19" deep - 25 period case pcs in this sale



Outstanding vintage Art Deco country store or ice cream shop glass & chrome revolving base five section compartmented candy display jar - 10" tall x 18" wide



"The Winthrop Bank & Trust Co New London" antique reverse painting on glass advertising thermometer/mirror - 39 1/2" tall x 12 1/2" wide & orig framed "Welcome Soap" advertisement for Curtis Davis & Co Boston, MA (in business 1835-1898) in spectacular embossed orig frame & w fabric embellished figures on chromolithograph background - 31 3/4" x 16 3/4" overall size



Evelyn S. Dubiel (born 1922 - known as America's foremost living folk artist) small 4 1/2" x 3 1/2" sight size w/c "Young Woman in a Black Dress" - This is one of Dubiel's earliest works executed some 35 years ago - Provenance: direct from the Dubiel family - See our internet sites for more Dubiel paintings



Sgnd Picasso dated 1961 abstract floral print - 24 1/2" x 19" sight size



Boston & Eastern MA QA sidechairs in maple ca 1720's-1740's w great carved crests atop spoon backs featuring the boldest of turnings - See our internet sites for approx 40 period chairs in sets, pairs & singles



Very early QA period ca 1750 Eastern CT (found in Stonington) exquisite form maple oval top breakfast table on graceful cabriole legs w great overhanging orig top - 43" long - 25 period tables in this sale



Period Chippendale ca 1755-1775 carved mahog block front kneehole desk w old NYC label - 35 1/2" case width



Fine private collection of attrib Murano Glass clown form decanters, figures & bowl



Toy & child related incl 12 antique Native American Skookum dolls (showing 7) incl 1 in rare orig box - height of tallest is 15" - height of shortest is 6 1/2"; ca 1870 china head 20" doll in vintage clothing w an accompanying ca 1870's doll's dresser - 26" tall; Great ca 1850's china head 21" doll in orig body, clothes, shoes, etc sitting in a chair plus fine paint dec 19thC Vict doll carriage in dry Windsor green paint w gilt highlights in excellent cond w undamaged canvas seat & canopy - 21 1/4" tall x 30" long



Antique QA tiger maple lowboy - 31" wide x 32 1/4" tall x 20" deep - See our internet sites for more period lowboys & more tiger maple furniture



Showing 3 of 5 period blanket chests from New England incl ca 1840 (Coastal CT 3 drawer in red) plus orig grain ptd 2 drawer examples (1 sgnd & dtd) - See our internet sites for details on these & the others



Ca mid 19thC 2 handled ftd fine Prattware bowl - 12 1/2" wide x 9" deep & a wonderful early soft paste ca 1820 Prattware pitcher w hand painted children at play dec - 7 1/2" tall

NOTE: This ad could easily have been twice this size! Check either of our internet sites for the complete picture, come to one of our week long preview days & DON'T MISS THIS IMPORTANT AUCTION!

AUCTIONEER: PETER STANTON IMLER
 MA LICENSE #440 CATERED
TERMS OF SALE: Cash or KNOWN check unless cleared with management in advance.
 We accept cash, check, MC, VISA, DISCOVER & AM EX.
 We accept LIVE, Absentee, Phone & ONLINE Bidding
ACCESSIBLE: From Rte 91 North & South &/or The Mass Pike (Rte 90). We are a suburb of Springfield, MA. A call for directions will save you time: 413-566-3161...Or print them off the website at www.stantonauctions.com



There are 25 period tables in this sale incl these 3 examples in maple & pine: 1730 Wm & Mary 1 dr stretcher based tavern table in orig red; 1750 rare form tall stretcher based accountant's or lawyer's table in orig red; Late 18thC tap table in early mustard grained paint over orig red



Private collection of antique cast iron banks incl 1939 World's Fair elephant & donkey



Fine private collection of antique cast iron doorstops incl many rare examples