

BURCHARD GALLERIES

2528 30th Avenue North, St Petersburg, Florida 727.821.1167

Presents

Vintage Estate Antiques, Fine Art & Jewelry Auction

SUNDAY APRIL 24TH, 2016 @ 12 NOON

Preview: Saturday, 4/23 1-6 PM • Sunday, 4/24 10 AM

www.BurchardGalleries.com

“The Cutting Edge of Acquisition”



Important Antoine Gaudreau Louis XV Style Gilt Bronze Mounted Commode: An exquisite nearly identical copy of the rococo commode commissioned by Louis XV to Antoine Gaudreau to house his coin collection in Le Cabinet de Roi, Versailles. Over the top gilt bronze mounts to include rams heads, center masqueron, vignettes in medallions, foliate and floral scrolls. Shaped marble top and front, parquetry inlaid fruit wood. 2 locking doors open to reveal 2 drawers either side. Overall measures 37¾" h. x 70¾" x 25½"

St Petersburg FL ... The place to be and well worth the Drive! Our April 24th Auction features Artworks and Treasure from more than 20 prestigious Florida Estates. In this Auction... A rare Raingo Freres Gilt Bronze Figural Clock; Galle Cameo Glass; Oriental Porcelains and Cloisonné; Fine Silk Oriental Rugs; Vintage Lighting, Herman Miller Furniture and other mid-century Modern; and of course a huge assortment of Stunning Estate Gold and Diamond Jewelry.

Also over 150 Works of Art: Important 18th, 19th, and 20th C. Original Oils, Watercolors, Bronzes, Sculpture, Photographs, Prints, and Drawings by artists such as Thomas Hart BENTON; Keith HARING; Michael LEA; Joan MIRO; Roy LICHTENSTEIN Jerzy KOSSAK and more will be on the Auction Block. These are just a few highlights of this “Fresh to the Market” Auction you won’t want to miss. It will most certainly be another “Unbelievable Auction Weekend”! See You There!

***Note:** This is page 2 of a 2 page campaign (See last week’s *Antiques and The Arts Weekly* for page 1 or mail@burchardgalleries.com to join our mail list and receive both color pdf brochures.)

Quality Consignments Always Welcome for future Auction events.
727-821-1167

2016 AUCTION SCHEDULE

Apr 23/24 • May 21/22 • Jun 25/26 • Jul 23/24 • Aug 20/21
Sep 17/18 • Oct 15/16 • Nov 12/13 • Dec 10/11



Raingo Freres French Bronze Figural Clock: Gilt bronze body stamped H. Picard (Henri Picard, French 1840-1890) and stamped 1064 in several locations. Movement marked with Raingo Freres medallion



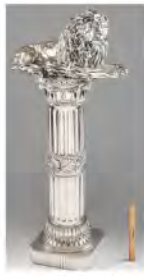
Massive Carved Oak Man of the North Dining Set



Collection of Mid Century Furniture:
Hans Wegner, Mastercraft, Milo Baughman and more



Cable-Nelson Mahogany Baby Grand Piano, 58" long



Italian Silver Clad Lion & Matching Silver Clad Pedestal



Large Oil/Canvas by Paul Emile Pissarro



Armand Guillaumin Oil/Canvas Landscape



Winterhalder & Hofmeier 5 Tube Grandfather Clock, 94" h.



Palatial Semi-antique Pakistani Bokhara, 8' 9" x 17' 2"



Robert Reid Oil/Canvas, Portrait of a Young Man



Collection of Chess Sets From Around the World, sold as a lot!



Over 35 Pieces of Carved Stone, Serpentine Chinese Figural Groups
Large German Embossed Figural Putti Silver Box, 12" x 8 ½"



3 early relief plaques, Mattei, Dellanoy and Unknown



Large German Embossed Figural Putti Silver Box, 12" x 8 ½"



Pr Chinese Famille Mandarin Rose Floor Vases, 31½" h



Cameo Glass: 1004) Daum Nancy Winter Landscape, 11½" h; 1005) Galle 4 color Cameo Vase. 12½"



1203) Civil War Era 1851 Colt Navy Revolver; 1203A) Civil War Era Whitney Navy Revolver



1207) Civil War Confederate Pike Polearm, 87" long; 1204) Model 1879 US Springfield Trapdoor Rifle Overall 27" h. x 28" x 8 ½"



18k Diamond and Pink Sapphire Flamingo Jewelry Suite: 3 piece suite reminiscent of Van Cleef and Arpel. The diamond total weight is approx. 3.10 Ct., the sapphire total weight is approx. 22.5 CT



Vintage 1964 Rolex GMT Master Watch with Pepsi Bezel



Mega Bling! A Show- Stopping 32 Ct Diamond Link Bracelet, in 14K white gold. VS Clarity, G-H color. 113 grams TW



Impressive 14K Gold, Sapphire, Tanzanite, and Diamond Ball Necklace, 18" in length. 135 grams total weight



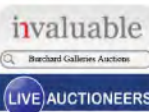
L & JG Stickley 327 Arts & Crafts 16 Light Bookcase: Unmarked, through tenon & keyed, 56 5/8" h. x 36" x 12"



Thomas Hart Benton Tempera, Study for "The History of Water"



Large Meiji Scroll Painting



BURCHARD GALLERIES
2528 30th Avenue North, St Petersburg, Florida 33713
1-800-520-2787 • www.burchardgalleries.com



BURCHARD GALLERIES

2528 30th Avenue North, St Petersburg, Florida 727.821.1167

Presents

Vintage Estate Antiques, Fine Art & Jewelry Auction

SUNDAY APRIL 24TH, 2016 @ 12 NOON

Preview: Saturday, 4/23 1-6 PM • Sunday, 4/24 10 AM

www.BurchardGalleries.com

"The Cutting Edge of Acquisition"

St Petersburg FL ... The place to be and well worth the Drive! Our April 24th Auction features Artworks and Treasure from more than 20 prestigious Florida Estates. In this Auction... A rare Raingo Freres Gilt Bronze Figural Clock; Galle Cameo Glass; Oriental Porcelains and Cloisonné; Fine Silk Oriental Rugs; Vintage Lighting, Herman Miller Furniture and other mid-century Modern; and of course a huge assortment of Stunning Estate Gold and Diamond Jewelry.

Also over 150 Works of Art: Important 18th, 19th, and 20th C. Original Oils, Watercolors, Bronzes, Sculpture, Photographs, Prints, and Drawings by artists such as Thomas Hart BENTON; Keith HARING; Michael LEA; Joan MIRO; Roy LICHTENSTEIN Jerzy KOSSAK and more will be on the Auction Block. These are just a few highlights of this "Fresh to the Market" Auction you won't want to miss. It will most certainly be another "Unbelievable Auction Weekend"! See You There!

***Note:** This is page 1 of a 2 page campaign (See next week's Antiques and The Arts Weekly for page 2 or mail@burchardgalleries.com to join our mail list and receive both color pdf brochures.)

Quality Consignments Always Welcome for future Auction events.
727-821-1167

2016 AUCTION SCHEDULE

Apr 23/24 • May 21/22 • Jun 25/26 • Jul 23/24 • Aug 20/21
Sep 17/18 • Oct 15/16 • Nov 12/13 • Dec 10/11



Important Japanese Items to include 1036) Signed Mixed Metal Silver & Bronze Pheasant on burl plinth, 14 1/2" h overall; 1037) Signed Hattori Kintaro Silver Flower Bowl



1061) \$ 50,000 Platinum 12.46 Ct Deco Bracelet; 1094) Platinum 3 Ct Diamond Wedding Band / Eternity ring; 1202) 3.85 Ct Tourmaline Solitaire in 18K Gold; 1082) Ritani Natural 1.13 Ct Yellow Diamond Platinum Halo Engagement Ring, GIA Cert; 1191) .50 Ct Diamond Solitaire Engagement or Wedding Band, 18K Gold; 1041) A Wide Sapphire and Diamond Eternity or Wedding Band Platinum Ring; 1201) European Made Wide 14K Gold Geometric Link Bracelet, 75 grams.



1198) Michael Leu Watercolor NYC Street Scene, commissioned for over 20k



1015) Mural Size Jerzy Koszak Oil/Canvas "Charge"



1180) Roy Lichtenstein Screenprint, "Composition IV" 1995



1165) Thomas Hart Benton Oil/Tin, "The Quartet"



1028) Important Antoine Gaudreau Louis XV Style Gilt Bronze Mounted Commode: An exquisite nearly identical copy of the rococo commode commissioned by Louis XV to Antoine Gaudreau to house his coin collection in Le Cabinet de Roi, Versailles. Over the top gilt bronze mounts to include rams heads, center masqueron, vignettes in medallions, foliate and floral scrolls. Shaped marble top and front, parquetry inlaid fruit wood. 2 locking doors open to reveal 2 drawers either side. Overall measures 37 3/4" h. x 70 3/4" x 25 1/2"



1033) Paul Dubois Bronze John the Baptist



1010) Eugen Schlimpf Nude Bronze



1001) Old Silversmith Shop Diorama with Miniature Sterling Holloware: Miniatures include Tiffany & Co. marked serving tray (2 3/8") dia and gravy boat; William Meyers marked punchbowl, sauce boat, covered vegetable; other items include teapot, trays, bowls and more. Furniture to include a sideboard, worktable, chair, nest of tables, candlestand and more. Shop model with illuminated interior, swing out front door, 10 1/4" h. x 17 1/2" x 7"



1050) Georges Rouault Etching/Aquatint "Femme Affranchie" from Miserere et Guerre 1923



1005) Emile Galle Cameo Glass Vase: Tapered body with flared rim, amber ground, orange cameo aster or daisy flowers with foliage. Signed Galle, ground pontil on foot. Overall 11 1/2" h. x 4 1/2"



1032) Desruelles Bronze David with Slingshot



1068) Wilhelm Andersen Oil/Wood Religious Still Life



1005) Emile Galle Cameo Glass Vase: Tapered body with flared rim, amber ground, orange cameo aster or daisy flowers with foliage. Signed Galle, ground pontil on foot. Overall 11 1/2" h. x 4 1/2"



1190) Keith Haring Lithograph, "Three Lithographs" 1985



1016) Raingo Freres French Bronze Figural Clock: Gilt bronze body stamped H. Picard (Henri Picard, French 1840-1890) and stamped 1064 in several locations. Movement marked with Raingo Freres medallion. Overall 27" h. x 28" x 8 1/2"



1034) Marcel Guillemard Deco Bronze Nude with Satyr Faun



1120) Mid Century "Star Dust" Buckeye Burl Coffee Table by The Burlwood Co., California, 65" long



BURCHARD GALLERIES
2528 30th Avenue North, St Petersburg, Florida 33713
1-800-520-2787 • www.burchardgalleries.com

