

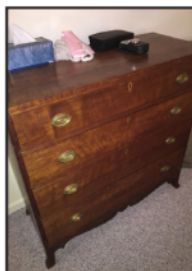
Unreserved Real Estate & Contents

◆ AUCTION ◆

2840 Hatch Lake Road, Eaton, NY 13334

[Rte. 20 to Nelson, S. on Erieville Rd. (Co. Rte. 67), E. on Eatonbrook Rd. (Co. Rte. 52), S. on Hatch Lake Rd.]

SATURDAY, APRIL 30, 10 AM - Preview: 9-10 AM



Antiques, Collectibles & Furnishings to be auctioned following the sale of the Real Estate: Furniture: Antique Regina Orchestral #4-Serial #27264 - Upright Music Box in Mahogany Case in playing condition w/26 27" discs 2 larger single Combs w/172 teeth 79"hx43"wx18"; Early Pine 1 drw. Hepplewhite stand, Pine 2 dr. cabinet 38"wx33"h, Early Pine Hepplewhite bread board top work table w/tapered legs; 4 Pine Barrel back chairs, Boston Rocker, Early Cherry 2 drw. Turned leg stand, Early Cherry Hepplewhite 4 drw. Chest w/pencil inlaid graduated drawers; Pine Lincoln lift top commode, Early Pine plank seat rocker, 2 Pine stands, Early Hepplewhite Cherry graduated 4 drw. Chest w/splained feet & oval brass handles; Early Hepplewhite Pine lift top 2 drw. Blanket chest; 3 Wing Back arm chairs, loveseat, Adirondack platform rocker, Bedside table, Pine Cross Buck coffee table, Early Cherry Hepplewhite dropleaf table, Full size 54"w Modern Sleigh Bed w/Beautyrest Mattress & Spring; Antique Cannonball bed; **Collectibles:** Seth Thomas dbl. dial Calendar clock-20"wx39"h; Steeple clock, James Gray Kinross Tall Mahogany case clock w/moon dial w/brass work-87"; Early wooden well pump floor lamp, Pitcher pump lamp, Brass tea kettle, Currier & Ives "Coming From the Trot"-Original lithograph 1869; Pr. of Staffordshire Dogs, Delft Bowl, lg. Toy Metal Trains incld.-Engine, Coal Car & Railway Express 1515 car; Wooden decoys, Original "Becalmed" by Ray Crosby 37"wx25"h; Set of "Bramble" by Wedgewood China; Early Map of American Republic 1846 by J. H. Young-engraved by J. H. Brightly; lg. Brass plaque, 2 Pine Ogee mirrors, Early Kerosene & Milk glass lamp, Pr. Of Currier & Ives George & Martha Washington prints, silent butler, antique quilts, Antique "God Bless Our Home" needlepoint; Antique Currier & Ives Print of "The Great East River Suspension Bridge" (Brooklyn Bridge) 36"wx25"h, antique small steam engine lamp, antique wooden butter churn lamp, Winter in the Country print, cookbooks, Original GWW HP lamp; old glass pickle barrels, 78 records, lg. antique spun brass kettle 1851; Canal table lamp, antique cast iron door stops of Woman w/baskets, Ram & Basket of flowers; Shoe shine stool; antique wedding dress, Antique fan in shadow box frame, plastic cigar store Indian; **Household Furnishings, Tools & more!**

Terms on Personal Property: Full payment due day of Auction by Cash, Visa, MasterCard, Discover or Debit Cards. Checks w/Bank Letter of Guarantee. Ten percent buyer's premium. All items sold in "as is" condition. Subject to errors and omissions. Driver's license required for bidding number. Refreshments available. All statements made day of auction take precedence over printed material. Auction: #7202/16.

Brzostek's
AUCTION SERVICE INC.

www.brzostek.com
800-562-0660

