

Property from a Connecticut Estate belonging to Descendants of J. Alden Weir ANTIQUE ESTATE AUCTION

3 SESSIONS | Friday, May 20th | Saturday, May 21st
Frank Jones Center, 400 Rte. 1 Bypass, Portsmouth, NH

AUCTIONEER NOTE: On May 20th & 21st, Boyd Auctions will offer for sale the contents of an Old Lyme, Connecticut, estate belonging to descendants of American Impressionist artist Julian Alden Weir, including artwork by the artist. This treasure-trove of history is fresh to the market and has been in private storage for over twenty years. The three-session auction will be held at the Frank Jones Center in historic Portsmouth, NH.

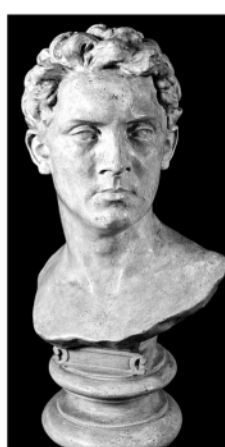
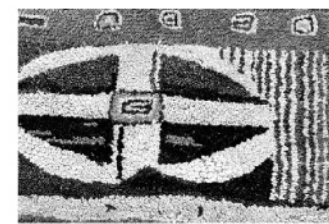
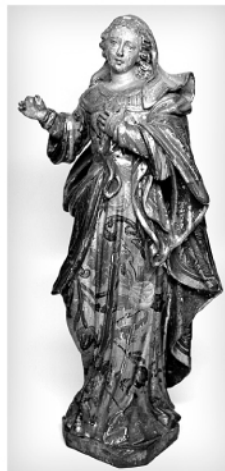
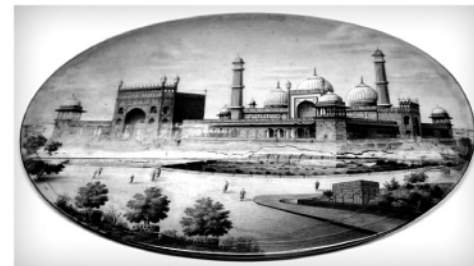
SESSION 3

Antiques | Textiles | Ceramics | Military | Fishing

Auction: Saturday, May 21st at 10:00am

Preview: Thursday, May 19th, 4:00-8:00pm | Friday, May 20th, 8:00am-12:00pm
Saturday, May 21, 8:00-10:00am

FURNITURE: Italian refectory table, gothic style; Early CT 2-drawer blanket chest w/red wash; CT candlestand; early wing chair; QA tiger maple drop-leaf table; (6) thumb-back chairs in paint; CT 4-drawer Chippendale chest w/serpentine front; English oak chest on stand w/raised-panel sides, molded drawer fronts & top; English oak armchairs w/turnings; Jacobean oak side table w/carved fold-over top; carved armchair w/bust of man & woman; oak tuck-away table w/barley turnings; early jointed stools; oak 3' bench w/turned leg; Hepplewhite mahogany stand w/tapered legs; painted walnut lock side; Sheraton 6-leg sofa; Sheraton mahogany card table w/shell inlay; pine tavern table w/stretchers base; mahogany coffin table; early corner chair; several NE side chairs; pine open-front country cupboard; QA candlestand w/shaped top; oak drop-leaf table w/shoe foot; brass-bound coffer chest; Cherry candlestand, country twin beds; iron garden table chairs. **ACCESSORIES:** Oak book press w/final top on stand; large demijohn bottle; oak lift-top carved miniature chest; French ceramics by Jean Besnard ceramic bowl & lamp; 19th-c religious statues in polychrome paint; Italian holy water font; Native American whimsy; NW Coast Haida argillite figural carved pipe; spice chest w/molded top & bracket base; folk decoys shorebirds; 14k-top cane and others; early artist tools; stool; bookmaking tools; daguerreotypes & photography lots; brass jamb hooks; 10 early brass buckets, Ansonia, CT; early pewter collection incl. lighting; baskets; copper & brass vessels; trencher; bellows; mirrored tin sconce; ormolu & brass frames; carriage clocks; daguerreotypes & photography lots; bone-handled tools; wood boxes; games; early dominoes & mahjong pieces; wooden puzzles; mid-century kitchenware. **FISHING:** Hardy Silex #2 brass reel; 3 fishing reels w/JAW monogrammed leather cases; R. Turnbull maker Edinburgh brass 4" reel; fishing lures; early bamboo fly rods incl. 2 Leonard's; Hardy; LL Bean; (2) Charles H. Perdew, IL duck calls. **MILITARY:** early American decorated powder horn; miniature portrait; silhouette in the manner of Auguste Edouart, & sword belonging to Maj. Rufus Baker; an early set of brass tools from R.S. Perkins 1851 given to R.L. Baker; coins & military buttons and leather pommel holster; medals. **RUGS:** Sabatos Rug signed Marion Larrabee Volk from Center Lovell, ME; Sumac (worn) 6 x 9; Caucasian runner 3 x 14.6; Kurd; Kazak; Afshar. **TEXTILES:** schoolgirl samplers Ann Pierce 1822 Boston; Rebecca White 1829; Jane Ogden 1811; English needlework in bird's-eye maple frames; buttons & lace; linens; quilts; painted silk; framed embroidery; textiles; collection of tortoise-shell combs; sewing items; large decorated fan collection; early handbags incl. several w/embossed Continental silver mounts; 18th-c steel shoe buckles; hat pins; amber jade & bone beads; costume jewelry. **SILVER:** Asian box w/relief work; sterling Tiffany frames; Georgian 2-handled cup; Cellini Shop bowl; coin silver; tea caddy; items w/JAW initials; 14k pencil; RLB friendship coin purse; JAW initialed desk items. **PRINTS:** J.J. Audubon "American Woodcock" 22 x 27.5, "Swift Fox" 22 x 27.5; engraved frontispiece CN Cochen Sculp, steel engraving of Daniel Webster by Jacques Reich; engraving "Royal Family of Great Britain," London, 1800; Washington Currier & Ives; many fly-fishing & hunting prints & etchings; Izaak Walton fly-fishing engraving signed S. Arlen 1898; bird lithographs by A. Pope; French fly-fishing prints; colored engravings hunting scenes by H. Alken; several bird engravings and prints. **ARTWORK:** 28" bronze bust of John Paul Jones by D. Godard Paris; 24" chalkware bust of J. Alden Weir by Olin Warner; o/c portrait by William Verbrugg; miniature painting of Dorothy Weir by Laura Coombs Hills; miniature portrait paintings of Anna Dwight Baker at different ages; min. portrait signed ED Weir 1907; miniature Taj Mahal Mughal-style painting; 3" bronze medallion by Mahonri Young, 1933; unframed miniature signed ED. **ASIAN ANTIQUES:** Chinese Wanli period "Shou Mark" vase; Chinese transitional period blue & white brush pot as "Mizusashi" w/anhua decoration; Japanese "Ko-Imari" cylinder jar w/tiger dec. Arita prov.; Japanese "Ko-Imari" Jar Arita Prov.; 19th-c. enameled vessel w/mutton jade handle; signed bronze tsuba; 2 iron tsuba's; Canton; Imari umbrella stand. **CHINA & GLASS:** Delft posset pot; blown tankard w/embossed pewter top; Delft tankards dated 1733 & 1793; Lowestoft china incl. tureens & platters; Bohemian glass; large Booths China "Blue Willow" set; collection of early blown-glass stemware; bottles & decanters; etched 1933 repeal 18th amendment glass; 3 early flasks; Wedgwood fish platter; Italian pottery; Limoges; Minton; Lenox; blue & white export china belonging to the Weir family.



BOYD AUCTIONS

PO Box 294 Eliot, ME 03903

(207)439-6641 www.boydauctions.com

For a complete catalog listing visit www.auctionzip.com ID #10420

To view photographs & more information go to: www.boydauctions.com

TERMS: 10% buyer's premium, 13% for credit card sales • cash or check on approval • all items subject to error • catered • no Internet bids or phone bids • Phone day of sale 603-498-3131 • Maureen Boyd NH lic. #2821, John Boyd NH lic. #4010

DIRECTIONS: 1-95, N/S exit 5 to Portsmouth traffic circle * bear right onto the rte 1 bypass South * take a left at the second set of lights * continue into the back area for the Frank Jones Center Parking.