

Winter Associates

Auctioneers & Appraisers

AUCTION : Mon., March 14th, 6:30 pm

Previews: March 13th, 2 - 4 pm; March 14th, 3 - 6:15 pm or by appt.

***Heavy Snow date: March 15th; call to confirm

Art, American Antiques, Tribal, Maritime, Clocks, Jewelry, Silver, Vintage Clothing, Dolls, Etc.

View catalog online at www.AuctionsAppraisers.com



Grain-Painted



Amer. School, 35" x 41" (poss. Randalls, Brooklyn)



Fig. Maple/E. Terry



Rubellite Ring, 42 ct.



14K, Diamonds, Tsavorite



14K, Dia., Plat. Tiffany/Continental



Tiffany/Continental



Nelson A. Moore, Lake George



Chippendale w/Ownership Inscription



Navajo Third Phase



Amer. Indian Incl. 14 Lithos.



Tiffany Favrite



Maritime incl. Diorama



George Hathaway, Peaks Island



Navajo Rugs



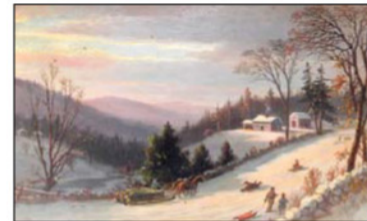
George Bunn (1 of 6)



Vintage Clothing



Georgian Mahogany



Benjamin Champney, Green Mountains



Conn. Chalk Inscription



Eric Sloane (1 of 2)



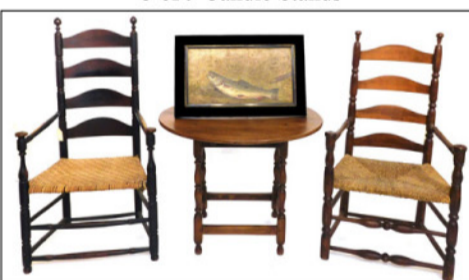
French & Others



3 of 9 Candle Stands



Margolis Shop



18th C. American



Barrel Back Cupboard

Art, American Antiques, Tribal, Maritime, Clocks, Jewelry, Silver, Vintage Clothing, Dolls, Etc.

Fine Art: Frank Alfred Bicknell oil; George Bunn oils on canvas and mahogany panel (6); Clifford Carleton oil; Benjamin Champney, "Green Mountains"; George Crawford acrylics (3); Brian Coole oil; Frank English w/c; Leonor Fini w/c; Catherine Gerry oils (2); Kate Greenaway w/c; Charles Gruppe oil; George Hathaway oils (2), first depicting Peaks Island, second depicting Orr's Island, both in ME; William Fowler Hopson drawings (10); Marion Huse oils (6); Hugh Bolton Jones w/c; Charles Russell Loomis w/c; Bruce Mitchell oil; Fearleigh Montague oil; Nelson A. Moore oils (2), first "Adirondacks Blue Mountain Label", second probably depicting Lake George; Lawrence Nickle oil; Armand Schonberger gouache; Eric Sloane oils (2), both depicting clouds & airplanes; Harold Streator oil; Dwight William Tyron w/c; J. Maynard Williamson oil; William Wright oil; large early 19th C. American School oil depicting four children, possibly Randall Family from Brooklyn, NY, 35" x 41"; other American School still lifes; naive oils & drawings depicting cats; attr. to Philip Wilson Steer drawing; in the manner of Arthur Allis oil, etc. **Bronze Sculptures:** After Remington "Bronco Buster", "The Savage", "Sergeant", etc. **Prints:** Jan Balet color lithographs (4); Pierre Bonnard tusche lithograph; Ray Harm (3); Maxime Lalanne etching; John A. S. Monks etching; Edith Penman etching; large assortment of 19th/20th C. chromolithographs, etching, and engravings depicting landscapes, plants, and animals; late 19th C. Hawthorne Portfolio "Edition de Luxe" containing 24 etchings from Hawthorne's works, etc. **Antiques:** late 18th C. MA Chippendale drop leaf gateleg dining table w/ pencil inscriptions indicating it was once used by family of Dr. & General Joseph Warren (Amer., 1741-1775) & owned by Fenno & Holbrook Families (Worcester, MA); stepback apothecary cupboard w/ faux grained case; late 18th C. CT probably New London County cherry chest on chest w/ partial chalk inscription; 18th/19th C. cherry barrel back corner cabinet; early 19th C. figured maple diminutive chest of drawers w/ pencil inscription "For James Hull Aiken/This bureau was bought by his great grandfather Ansel Hungerford in 1818"; early 19th C. English mahogany chest on chest; late 18th American seven drawer chest; two American highboys, both marriages w/ 18th C. parts, one figured maple; set of 4 18th/19th C. Windsor fan back side chairs; three late 18th C. American slant-lid desks, one figured maple; late 18th C. CT four-drawer chest w/ gadrooned molding, detached back leg; two late 18th C. American tall blanket chests, both w/ false drawer fronts; 18th/19th C. American tavern table; late 18th C. American lowboy; late 18th C. American candle stands (5); 18th/19th C. American ladder back arm chairs (2); 17th/18th C. American blanket chest w/ grain painting; two 19th C. drop leaf dining tables, one w/ single drawer; early 19th C. Windsor sack back arm chair w/ reinforced arms; 18th/19th C. carpenter's tool chest; early/mid-19th C. Lewis Scola English wheel wall barometer; two late Federal mahogany chests of drawers; 19th C. English slant-lid desk; early 19th C. American mahogany server; mahogany cabinet; oak roll-top desks (2); mahogany nesting tables; two Victorian upholstered chairs; early 19th C. Federal wall mirrors w/ reverse painted tablets depicting fishing man, woman on settee, etc. (3), etc. **Margolis Shop:** c. 1927 slant-lid block front desk; set of assembled dining room side chairs (8); candle stands (2); wall mirrors (2), etc. **Other Fine Furnishings:** Chippendale style mahogany bow front chests (2); Ethan Allen Jacobean style dining table; Wellington Hall bombe chest; Queen Anne style lowboys (2); early 20th C. mahogany matching settee and side chair w/ m-o-p inlay; Sheraton style mahogany game table; oak dining chairs (6); Sheraton style camelback sofa; pair barrel back swivel arm chairs; Federal style gilt wall mirrors (3) etc. **Tribal:** late 19th/early 20th C. Navajo Third Phase chief's blanket, approx. 6' x 5'; Navajo scatter rugs and mats (7); Daniel Rice & James H. Clark, F.W. Greenough, & E.C. Biddle 19th C. colored lithographs of American Indians (14); After Edward Sheriff Curtis photogravures of American Indians (26); early 20th C. Hopi vessel; Mescalero Apache basket; Amer. SW blackware pottery (3); stone & quartz CT arrowheads, etc. **Clocks:** 18th C. Abraham Edwards (Ashby, MA) 30-hour wooden gear tall case w/ faux grained case, approx. 83" h.; early 19th C. English Georgian tall case w/ flame mahogany veneer, approx. 75" h.; early 19th C. E. Terry & Sons pillar & scroll; early 19th C. Chauncey & Ives (Bristol, CT) pillar & scroll; Jaeger Le Coultre Atmos mantel; early 20th C. probably French mantel, etc. **Seth Thomas:** mid-19th C. miniature cottage clock; one-day lever gallery w/ octagonal rosewood case, etc. **Vintage Clothing:** c. 1913 New Haven, CT wedding apparel from groom, bride, wedding guests, and flower girl along with other wedding-themed clothing, c. 1820-1884; very complete WWI uniform belonging to Lt. Col. in U.S. Army Medical Corps incl. great coat, jacket, breeches, put-

tees, Sam Browne belt, spurs, hats, etc.; large assortment of women's evening & ball dresses from 1850s-1890s incl. one w/ princess sleeves & train; every day women's 19th C. jackets; accessories incl. shawls & mink stoles, slippers, parasol, tortoise-shell & ivory hair combs, etc.; c. 1920s velvet flapper dresses & women's silk lingerie; Victorian woman's bathing costume; late 19th/early 20th C. men's clothing incl. coat, top hat, funeral cravats, silk socks, crew uniform, graduation cap & gown, etc.; large assortment of baby & children's clothing ranging from christening gowns to full costumes, etc. **Other Textiles:** Mid-19th C. Continental sampler; 19th C. cotton patchwork quilt, etc. **Oriental Rugs:** Caucasian Shirivan runner; Caucasian Kazak prayer rug; Persian Sarouk (2); Persian Ferrehgan; Persian Verriman; and Navajo scatter rugs and mats (7), etc. **Semi-Antique:** Persian Kashan, 9' x 12"; Persian Hamadan, etc. **Modern:** Agra Serapi; Oushak; Indo-Persian Kashan; Persian style, etc. **Jewelry:** large 42.29 ct. rubellite & diamond ring w/ 14K gold setting; 18K gold & platinum diamond engagement ring (0.78 cts.); 14K gold, diamond & tsavorite pin; 14K gold & opal brooch; 14K & platinum women's Elgin wristwatch w/ 38 small diamonds; 14K clasp & cultured pearl necklace; 14K gold figural charms; 14K gold pins incl. stylized snake form designed by Rick Cameron; 14K gold & amethyst ring & pair matching earrings; Scottish agate bracelet & pin; small assortment of earrings and rings incl. two pairs 14K & pearl earrings, etc. **Costume:** large assortment of Mexican and sterling, fashion, and bakelite jewelry, etc. **Sterling & Coin Hollow ware:** four scroll-handled cups incl. one Gorham; eight serving pieces by S. Kirk & Son, William B. Durgin, G. Spence, etc.; six snowflakes by Gorham, Reed & Barton, Metropolitan Museum of Art, etc. **Sterling Flatware & Serving Pieces:** pair Tiffany & Co. salad servers; probably R. Blackington & Co. "Marie Louise" pattern (29 pcs), etc. **Other Silver:** J.M. van Kempen & Zonen Dutch silver serving fork w/ elaborately pierced handle, 11" l.; early American & English coin silver tea & serving spoons by Jasper Stone, Tweedy & Barrows, Henry Evans, etc. (26 pcs); William Rogers & Son "Alhambra" pattern silver plate flatware service (175+ pcs), etc. **Dolls & Toys:** 19th C. 17" h. blue-eyed French fashion doll w/ kid body, along with small collection of dresses, pantalettes, aprons, cloak, etc.; late 19th/early 20th C. German bisque head dolls incl. Peter Scherf, Simon & Halbig, & G. Putnam; Weeden Manufacturing Co. steam engine #648; 19th C. Heubach Koppelsdorf bisque head mystical stick puppet, 14" h.; Madame Alexander & type dolls (5); Hubley Co. fire truck w/ slide ladder; vintage Coca-Cola cast-iron horse-drawn wagon; 19th C. German china shoulder-head dolls (2); doll cradle w/ clothing accessories, etc. **Ceramics:** Royal Crown Derby "Red Aves" pattern (76 pcs) including serving pieces; Lenox "Gold Wreath" pattern (70 pcs); Hispano-Moresque style lustre earthenware charger, 18" dia.; Johnson Bros.; Royal Doulton; Moorcroft, etc. **Glass:** Tiffany Favrite bud vase, 2 5/8" h. & pair master salt cellars, etc. **Other:** art glass, one by Robert Held, some w/ ruffle rims, cased & iridescent glass lamp shades (7); vintage perfume bottles; green glass bottles (2), etc. **Manuscript:** late 17th C. manuscript from New Amsterdam colony relating to legal issue of parental guardianship dated 24 July 1686 and recorded by notary Willem Bogardus, etc. **Maritime:** 20th C. ship half-hull models, one of "U.S. Constitution", the other "America", average size 44" w.; 20th C. ship model of Danish warship "Jylland" in custom case, 28" h. x 45" w. x 16" d.; Whaler's Crafts Nantucket basket w/ carved ivory cover; 19th C. diorama in shadowbox depicting three-masted ship; early 19th C. Sutherland-Huggins color engravings depicting British merchant and naval ships; ship model of "New York Central No. 27" single stack tug boat; 20th C. Seth Thomas ship's clock; ship's wheel, etc. **Important Misc.:** A.C. Williams "Two-face Black Boy" cast-iron still banks (2); 19th/20th C. brass candlesticks including many pairs; early 20th C. walking stick w/ ivory alligator handle; tramp art mirrors (2); early/mid-19th C. Lewis Scola English wheel wall barometer; 19th C. American wrought- & cast-iron kitchen accessories, white metal molds, canisters, etc.; c. 1960 probably NC Canadian goose floating decoy initialed "D.B.H."; pewter dishes, tankards, & charger, many with London crowned rose hallmarks; two Staffordshire porcelain figures converted into lamps; pair carved alabaster lamps; glass chandelier, etc. **LOCATION:** 20 mins. west of Hartford, CT. Approx. 2 hours from NYC or Boston. **I-84W:** exit 33 to Rt. 72W to exit 2, left onto 372W, first right onto Cooke St., 2nd drive on left; **I-84E:** exit 34, left onto Crooked St., left onto 372W, after 6/10 mile take right onto Cooke St., 2nd drive on left. **TERMS:** 20% Buyer's Prem., MC/VISA/DISC, Cash, Approved Checks, Absentee, phone and online bids accepted.

Winter Associates, Inc. • 21 Cooke St. Plainville, CT 06062 • 860-793-0288

