

BILL SPICER AUCTION

WEDNESDAY March 16, 2016 • 6:00 pm ~ Viewing 1:00 pm • Box lots at 5 pm
Washington Lodge Masonic Temple, 1515 Ten Rod Rd, North Kingstown, RI

****Day of Auction 401-265-5104****

DIRECTIONS: FROM CT: Take 95 north to exit 5A (102 S). Follow 102 S, cross over Rt 3 and continue on 102 for approx 9 mi. Temple is on left.
FROM MASS: Take 95 south to exit 9 (Rt 4). Follow Rt 4 to exit 5B (102 N). Stay on 102 for ¼ mile. Temple is on right.



Allen & Wheel Lock, 1858 Pistol



Bahama Lead Soldier Band - Britain



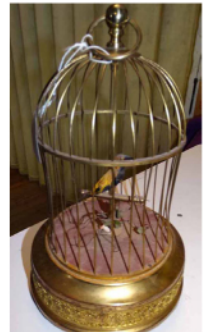
Oil/b Beach Scene by Niek Vanderplas



Contents of RI House



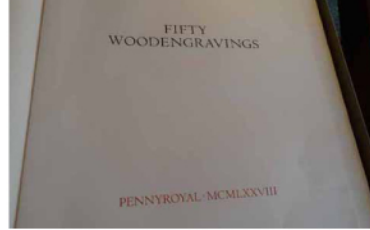
1771 Mini Carved Blanket Box



German Musical Birdcage



Oil/linen by John Dowd "Herring Cove"



Barry Moser "Fifty Wood Engravings" 1968



Early Eagle Flask



Large Collection of Toleware



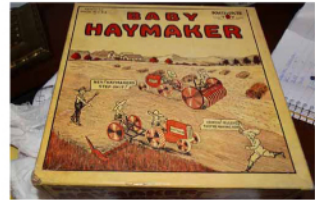
Early French ink stand



Oil/c portrait of girl, excellent



Military and Police Hats, Pouchard, Paris Hats



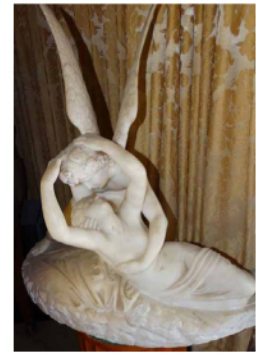
"Baby Haymaker" Animated Toy



Water/c Sheep by G. A. Hays



19th c. Mantle Clock



Marble Statue Winged Man and Woman



80 pc Georg Jensen, Denmark Sterling Set



Early Painting of Tug Boat



Tri-Ang Toy Train, England



9' x 11' Oriental Rug



Pr Wall Mirrored Sconces



Excellent 4' Carved Alabaster Urn



Large Porcelain Head Doll



6 Whirling Dervish Figures



Shoe Chair



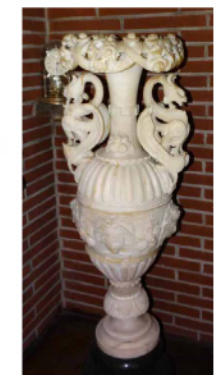
Large Jointed Teddy Bear



44" Statue of a Girl



Pr Very Early Needlework Panels 47" X 21"



Excellent 4' Carved Alabaster Urn

FURNITURE/RUGS: oak side board with carved leads; period slant front desk; period tall chest; excellent Oriental drop front desk; inlaid table with Indian figure plus others; cylinder secretary desk; unusual shoe chair; 1920's corner china; set of 6 chairs; 4-door stacking bookcase; Tambour desk; chair made by Johnson Chair Co, Chicago; 5 stenciled back chairs; flip top card table; possible shaker rocker; Banister back chair; mahogany lowboy; folding screen; pr Henkel-Harris chest of drawers; hanging cupboard; wheel barrow; child's wheel barrow; 9' x 11' Oriental rug; MISC: mini 1771 carved blanket box; pr of very early needlework panels (47" T x 21"W); tall (44") marble statue of a girl; carved alabaster sculpture by Ramos; 4' tall carved urn; marble statue of winged man and woman; Tiffany dishes; early French ink well; lot of early French pottery; pr French lamps; 2 Pouchard Paris hats; 3 boxes interesting hats; quilt; early coverlet; German musical birdcage; Luneville 3-section dish and platter; Canton dish and underplate; set of Villery & Boch Ddresden dishes; Stick Spatter set of dishes; Majolica pitcher; Copeland Spode plates; set of Wedgwood dishes; Waterford glasses & vases; 2 cauldrons; 6 Hummels; two 8½" Madonna Hummels (brown and blue-green cloaks); ivory and bone figures; Staffordshire figures; 6 Whirling Dervish figures; 10 Royal Doulton figurines; 10 large lots of old Toleware; turkey chocolate mold; table top Victoria; Buff transit; 2 Keuffel transits; Robert Townsend transit; 19th cent. porcelain coffee pot; Oriental tree; 5 boxes of Oriental items; misc Toby mugs; Mary Gregory- lamp, vases, pitcher & glasses; candelabra; hanging chandelier; pr mirrored sconces; large table lamp; 19th cent. mantle clock; Gilman Collmore mantle clock; metal whale by Randy Rickett; pcs of metal fence; industrial fan; cast iron wine rack; cast iron dog door stop; lot of perfumes; firkin; early box on metal stand; "5 cent. Fairy Soup" tray; pottery fountain; 2 branding irons; Indian pottery; 2 metal grates; Christmas bulbs; miniature door knockers; #1 RI trailer license plate; 1950's "I Like Ike" license plate; fly rod by Farlows; early eagle flask; 4 milk bottles; 4 lots of old bottles inc: Warner's Safe Rheumatic Cure bottle; lightning rod; lot purses; Ethnic needlepoint; Beaumont trumpet; contents of RI house; BOOKS/EPHEMERA: Sat. Eve. Post magazines; Life magazines; 3, 1860 photos; early calendars; Victorian cards and trade cards; postcards; "1937 Episodes in Warwick History" book; 1959 book "Observations" by Avedon & Capote; STERLING/JEWELRY/COINS: 80 pc Georg Jensen, Denmark, sterling flatware set (acorn pattern); 90 pc sterling flatware set; Gorham sterling flatware set; other sterling flatware; 8 sterling cup holders; S. Yates 1810-1825 ladle; 4 books of silver dimes; 6 books of nickels; silver quarters and half dollars; 1903 half dollars; pennies Indian head cents; foreign money; MILITARY/FIRE/POLICE: German military hat;

Japan flag on a pole; 2 bayonets; 2 cannon balls; cal 25 Allen & Wheel Lock Co 1858 pistol owned by Caleb Wheeler, MA; Remington 22 rifle; 32 Savage, 1910 pistol; 38 Harrington - Richardson pistol; London police helmets; 3 firemen hats; one fire nozzle; fire sirens; Army uniform and hat; 2 centennial medals; early fire bucket; PAINTINGS: excellent oil/c portrait of a girl; oil/b harbor scene by Arthur Douglas; Barry Moser "fifty wood engravings" 1968; oil/board by J. P. McRickard, Laneville CT; oil/linen by John Dowd - "Herring Cove"; oil/b beach scene by Niek Vanderplas; oil/b still life signed M.H. Dewey; 3 woodblock prints by Nisaburo Ito; Oriental prints; picture of Queen Victoria and dog; Japanese print of ships; Water/c by G. A. Hays, sheep; engraving by Raoul Dufy; oil/b sailboats; cloth picture by Raayonii; early oil/c tugboat; oil/b still life; early pastel of fruit; water/c by William Jewell; 3 w/colors by W. J. pinxit; w/c fishing shack by Ruth Mitchel Wolff; oil/c pond & trees; oil/ by L. Keeler; signed paisley; TOYS/DOLLS: toy gas airplane N. 800"; lead soldiers - Bahama flyer; Fire and Drum band lead soldiers; other lead soldiers bands; Tri-Ang MLS toy train, England; American Flyer train set; 2 small toy monkeys, one is a bottle; 2 space rocket cars; 1912, L.A.E. doll; KR Halbig porcelain head doll; 1894 A.M. doll; 2 Flintstone dolls; 6 Nancy Ann story book dolls; 15 smaller dolls; small German porcelain head doll; Chad Valley toy; dolls trunk and clothes; large jointed Teddy bear; Structo trucks; Harry Potter hat; lead oxen-drawn wagon; cap guns; wind-up "Silver Meteor" train; #1666 Lionel train engine; 1930's Arnold wind-up train; "Baby Haymaker" animated toy; doll's cupboard.

12% buyer's premium. Cash. RI or known check. Mastercard/Visa.

DEALERS - BRING PROOF OF TAX NUMBER

VISIT OUR WEB SITE AT

www.billspicerauction.com or www.auctionzip.com - auctioneer ID# 2954

BILL SPICER - AUCTIONEER/APPRaiser

276 Widow Sweets Rd, Exeter, RI 02822 • 401-295-0339 • FAX 401-295-8739

Day of Auction 401-265-5104