



PROPERTY FROM NINE LUXURY ESTATES
AT AUCTION

April 16 & 17 • 1,200 Premier Lots

ATLANTA, GEORGIA • Beginning at 11:00 a.m. Each Day

• Preview and bid online at greatgatsbys.com | • liveauctioneers | invaluable •

PROPERTY FROM THE ESTATE OF BUSINESS OWNER AND ENTREPRENEUR, THE LATE MARTIN BEARER OF
PITTSBURGH, PENNSYLVANIA

Property from a Jackson, Mississippi estate • Property from two Atlanta (Buckhead), Georgia estates
Property from an Austin, Texas estate • Property from three Palm Beach, Florida estates • Property from a Sarasota, Florida estate
Along with select additions from fine estates and private collections across the U.S.



Italian burr walnut table
marquetrie inlaid with the
'Great Seal of the United
States', 35" diam.



Pair of oversized Sevres porcelain lidded urns, 19th c., maker marked, 23"h.



Steinway & Sons art cased grand piano, Model "C", serial no. 50541, circa 1890s, with paint decorated Venetian Rococo case supported by carved putti, fully restored, 42"h x 84"l x 55"w.



Louis XV style doré bronze mounted boule marquetrie inlaid tall case clock, inlaid with mother-of-pearl, horn, coral, and exotic hardstones, 84"h x 21"w.



French carved marble, bronze mounted, annular dial clock, 19th c., 32.5"h x 15"w.



Steinway & Sons art cased Louis XVI style grand piano, inlaid with satinwood and accented with finely chiseled doré bronze mounts, serial no. 190041, circa 1918, fully restored, 41"h x 85"l x 58"w.



American leaded stained glass window by Rudy Brothers, Pennsylvania, depicting figures in courtly dress in a pastoral landscape, 81.5"h x 89"w.



19th c. hand colored lithograph, circa 1846, by John James Audubon, 30.25"h x 36.25"w.



Early 20th c. German hand painted porcelain plaque, after Etienne-Adolphe Piot, overall 10.5"h x 8"w x 3.85"d.



Late 19th c. oil on canvas on panel, artist signed G. (Guillaume) Seignac, (French 1870-1924), 9"h x 12"w.



Pairpoint puffy lamp with Devonshire shade, base and shade signed, 21"h x 15" diam.



Pair of large and impressive 18th c. English George III mahogany lidded wine coolers, one lined with lead, 35.5"h x 12.5" diameter.



Two oversized carved Black Forest plaques, depicting hunting trophies, late 19th c., 47"h x 24"w.



19th c. Austrian porcelain portrait plaque of Empress Elisabeth of Austria, signed 'Wagner', with en verso inscription, 14"h x 11"w.



French Louis XV style gilt bronze mantel clock, late 19th c., 25"h x 17"w.



PROPERTY FROM NINE LUXURY ESTATES AT AUCTION

April 16 & 17 • 1,200 Premier Lots

ATLANTA, GEORGIA • *Beginning at 11:00 a.m. Each Day*

• Preview and bid online at greatgatsbys.com | • [liveauctioneers](#) | [invaluable](#) •

PROPERTY FROM THE ESTATE OF BUSINESS OWNER AND ENTREPRENEUR, THE LATE MARTIN BEARER OF PITTSBURGH, PENNSYLVANIA

Property from a Jackson, Mississippi estate • Property from two Atlanta (Buckhead), Georgia estates
Property from an Austin, Texas estate • Property from three Palm Beach, Florida estates • Property from a Sarasota, Florida estate
Along with select additions from fine estates and private collections across the U.S.



Large and impressive, 19th c. French oil on canvas river landscape, unsigned, 69.5" h x 95" w.



Early 18th c. oil on canvas, paper label en verso marked "Rosa da Tivoli... La bergere et son troupeau" attributed to Philipp Peter Roos called Rosa da Tivoli (German, 1656-1706), 22.75" h x 34" w.



After Peter Paul Rubens (Dutch, 1577-1640), 19th c. oil on canvas, self portrait of the artist, unsigned, 45" h x 35" w.



Narcisse Diaz (Narcisse Virgile Diaz de la Peña) (French, 1807-1876), signed oil on canvas, 20.5" h x 14.25" w.



Late 19th c. Continental oil on canvas still life, artist signed M. Villon (French), 18.25" h x 21.5" w.



Hector Caffieri (British, 1847-1932), watercolor titled 'Market Scene,' artist signed and dated, 16.5" h x 19.5" w.



Mid 19th c. oil on canvas, titled 'Lake Maggiore', signed J. V. (James Vivien) de Fleury (British, 1847-1891), 20" h x 32" w.



Late 19th c. oil on canvas, artist signed S(amuel) J(oseph) Clark (British, 1834-1912), 30.25" h x 49.25" w.



Early 20th c. Continental oil on canvas, barnyard scene, unsigned, 27" h x 38" w.



19th c. Italian pierce carved walnut hall bench, 48" h x 38" w.



Italian bronze bust of a man wearing armor, signed, 34" h x 24" w.



Pair of massive ormolu mounted lapis lazuli urns, 38" h x 30" w.



Monumental 19th c. Continental carved walnut mirror, 79" h x 83.5" w.



Late 19th c. palace size carved oak sofa, upholstered in taupe damask fabric, 59" h x 99" l.



Late 18th c. palace size carved oak Gothic Revival hall bench, 50" h x 95" w x 35" d.



Monumental 19th c. French carved oak buffet, 72" h x 114" w x 31" d.



19th c. Continental carved marble sculpture of a maiden, 39.5" h x 15" w.



19th c. Continental carved marble sculpture depicting Aphrodite and Eros, 41" h x 24" w.



Pair of doré bronze mounted Italian marble pedestals with matching campana-form marble urns, 69" h x 22.5" sq. of base.



PROPERTY FROM NINE LUXURY ESTATES
AT AUCTION

April 16 & 17 • 1,200 Premier Lots

ATLANTA, GEORGIA • Beginning at 11:00 a.m. Each Day

Preview and bid online at greatgatsbys.com | [liveauctioneers](http://liveauctioneers.com) | [invaluable](http://invaluable.com)

PROPERTY FROM THE ESTATE OF BUSINESS OWNER AND ENTREPRENEUR, THE LATE MARTIN BEARER OF
PITTSBURGH, PENNSYLVANIA

Property from a Jackson, Mississippi estate • Property from two Atlanta (Buckhead), Georgia estates
Property from an Austin, Texas estate • Property from three Palm Beach, Florida estates • Property from a Sarasota, Florida estate
Along with select additions from fine estates and private collections across the U.S.



Patinated bronze sculpture of a standing stag, 54"h x 50"w.



Patinated bronze sculpture of a standing bison, 47"h x 69"w.



Patinated bronze sculpture of a standing grizzly bear, 71"h x 31"w.



Neoclassical style peach marble garden gazebo with wrought iron dome top, 170"h x 119"w.



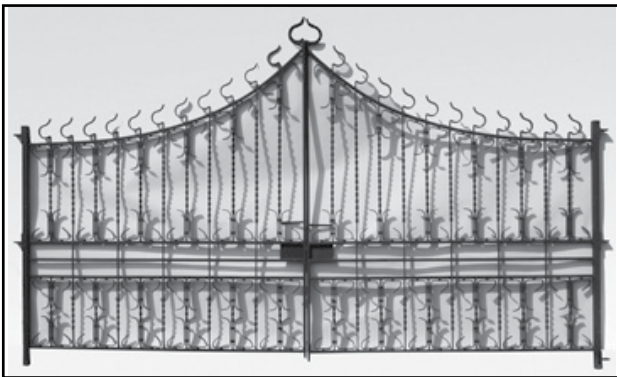
Patinated bronze sculpture of a resting camel, 43"h x 72"l.



Patinated bronze sculpture of two pelicans standing on a piling, 88"h x 43.5"w.



Green variegated carved marble wall fountain, 93"h x 43"w.



Pair of wrought iron entry gates, 10 ft. tall x 16 ft. wide.



Pair of oversized Neoclassical style terracotta urns, 53"h x 34"w.



Pair of oversized carved white marble planters with Grecian motifs, 50"h x 38" dia.



19th c. French two-tiered cast bronze fountain, 106"h x 72" diam.



Patinated and polychrome bronze figural garden sculpture, depicting four children at play on a rocky hillside, 107"h x 48"w x 37"d.



Pair of carved white marble recumbent lions, 33"h x 60"l.



Pair of massive Italian carved limestone sculptures, each of a cherub astride a dolphin, plumbed as fountains, 99"h x 46"w x 64"d, to be sold separately.





PROPERTY FROM NINE LUXURY ESTATES AT AUCTION

April 16 & 17 • 1,200 Premier Lots

ATLANTA, GEORGIA • *Beginning at 11:00 a.m. Each Day*

• Preview and bid online at greatgatsbys.com | • liveauctioneers | invaluable •

PROPERTY FROM THE ESTATE OF BUSINESS OWNER AND ENTREPRENEUR, THE LATE MARTIN BEARER OF PITTSBURGH, PENNSYLVANIA

Property from a Jackson, Mississippi estate • Property from two Atlanta (Buckhead), Georgia estates
Property from an Austin, Texas estate • Property from three Palm Beach, Florida estates • Property from a Sarasota, Florida estate
Along with select additions from fine estates and private collections across the U.S.



Late 19th c. American Victorian leaded stained glass window, 66"h x 36.5"w.



Late 19th c. American stained glass landing window, attributed to Lamb Studios, New York, 73"h x 40"w.



American arched stained and beveled glass window in an oak frame, artist signed and dated Mark Bogenrief 1984, 60.75"h x 39.5"w.



Pair of late 20th c. American stained and beveled glass windows in oak frames, by Agnew Myers (American, 1951-2008), 119"h x 53"w, to be sold separately.

Pair of cast bronze gargoyle sculptures, artist signed Kraig Varner (American, active), 24"h x 25"l x 12"d.



Brunswick saloon-size oak front and back bar, circa 1920's, Back bar: 125"h x 240"l x 19"d. Front bar: 44"h x 240"l x 27"d.



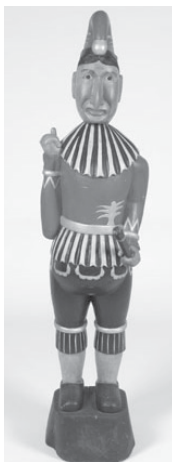
Brunswick Balke-Collender Co., 'Medalist' pool table, circa 1928, 32"h x 108"w x 58.5"d.



Patinated bronze sculpture in the form of a mermaid diving with two dolphins on a cresting wave, 140"h.



Pair of hollowed palm tree pots, 75"h



Lifesize hand carved and decorated figure of the French marionette "Punch", 72"h.



Mid to late 19th c. Italian carved and ebonized megalotoscopio or photograph viewer with stand and 49 slides. Case 18.5"h x 17"w x 29"d, stand 31.5"h x 43"w x 28.5"d.



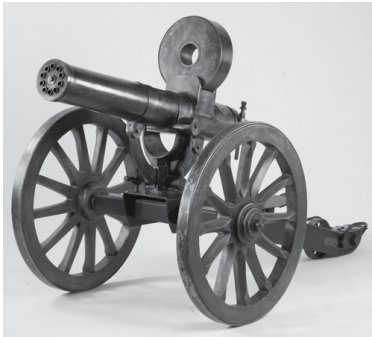
Monumental oil on canvas titled 'The Youth of Bacchus' after the original by William-Adolphe Bouguereau (French, 1825-1905), 78"h x 170"l.



Contemporary carved teakwood root sculptural bench, 42"h x 105"l x 35.5"d.



Rare architectural find! A complete American drugstore interior crafted by the finest drugstore cabinet maker - The Reinle-Salmon Co., Baltimore, MD. Finished in the finest grade of Cuban mahogany, these drugstore showcases remained untouched in their original setting for the past 100+ years. Approx. 11 ft. tall x 48 ft. long.



Authentic full-size bronze replica of the American Gatling gun, 105"l x 41"w. Not designed to be fired.

Great Gatsby's Auction Gallery • 5180 Peachtree Industrial Blvd., Atlanta, GA 30341 • Phone: 770-457-1903 • E-mail: auction@greatgatsbys.com

QUALITY CONSIGNMENTS ALWAYS INVITED

GAL#2004