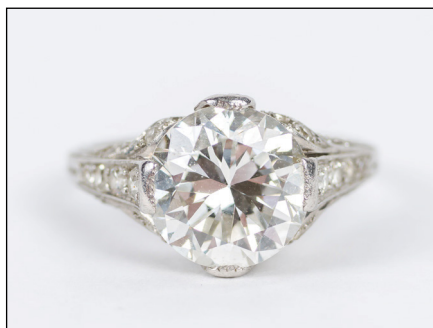


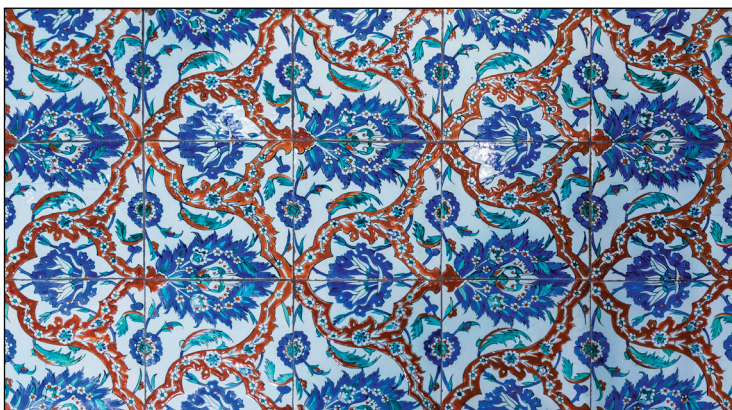
# THE MARCH AUCTION

Sunday, March 20<sup>th</sup> 2016 | 12 noon

ONLINE CATALOGUE AVAILABLE AT [WWW.GROGANCO.COM](http://WWW.GROGANCO.COM)



**18:** PLATINUM AND DIAMOND RING, APPROX. 3.6 CTS., \$15,000 – 25,000



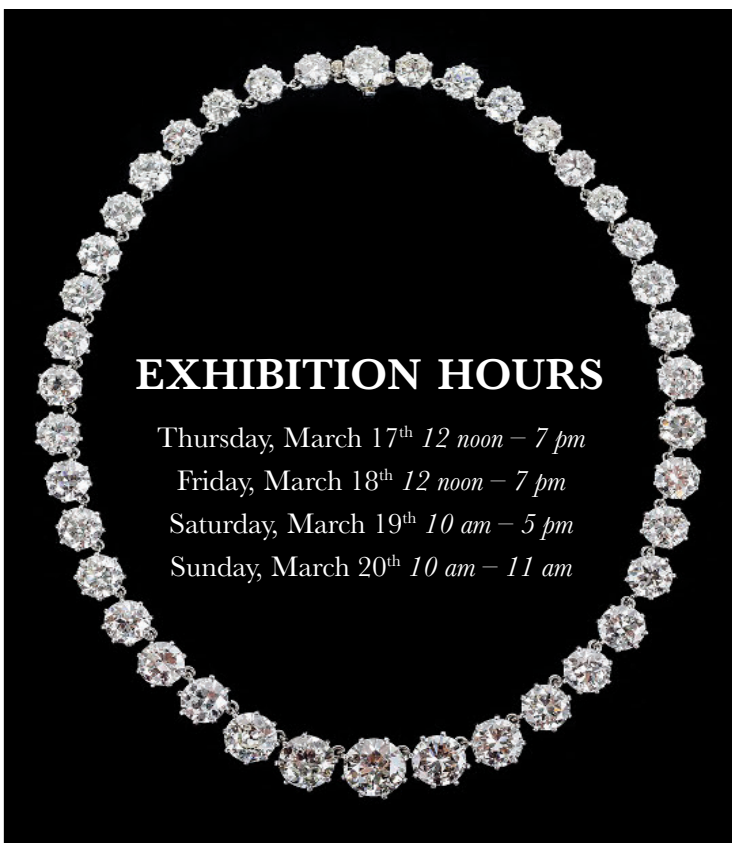
**274:** COLLECTION OF TWELVE TURKISH TILES, possibly 17<sup>th</sup> century, each tile approx. 10 x 10 in. \$5,000 – 10,000



**201:** PABLO PICASSO, *Femme au Fauteuil et Nu Assis*, etching, 12<sup>1/4</sup> x 16<sup>3/8</sup> in., \$7,000 – 9,000



**209:** PAUL DE LONGPRE, *Roses*, watercolor, 24 x 12 in., \$3,000 – 5,000



## EXHIBITION HOURS

Thursday, March 17<sup>th</sup> 12 noon – 7 pm  
Friday, March 18<sup>th</sup> 12 noon – 7 pm  
Saturday, March 19<sup>th</sup> 10 am – 5 pm  
Sunday, March 20<sup>th</sup> 10 am – 11 am

**57:** PLATINUM AND DIAMOND RIVIÈRE NECKLACE, Van Cleef & Arpels, APPROX. 63 TCW., \$75,000 – 100,000



**240:** MARSDEN HARTLEY, *Landscape*, oil, 30<sup>1/2</sup> x 24<sup>1/4</sup> in., \$100,000 – 200,000



**262:** COLLECTION OF FIVE GALLE CAMEO GLASS VASES, \$1,000 – 1,500



**11:** GOLD, SAPPHIRE, AND DIAMOND EARCLIPS, \$5,000 – 8,000



**301:** HERIZ CARPET, Persia, ca. 1900, 22 ft. 8 in. x 15 ft. 10 in., \$10,000 – 15,000



**220:** EMILE ALBERT GRUPPE, *Rockport Float*, oil, 25 x 30 in., \$8,000 – 12,000



**238:** EDOUARD FREDERIC WILHELM RICHTER, *Woman Dancing*, oil, 36 x 23<sup>1/4</sup> in., \$5,000 – 10,000



**GROGAN & COMPANY**  
FINE ART AND JEWELRY AUCTIONEERS

20 Charles Street  
Boston, MA 02114  
617.720.2020  
MAAL 800



# THE MARCH AUCTION

Sunday, March 20<sup>th</sup> 2016 | 12 noon

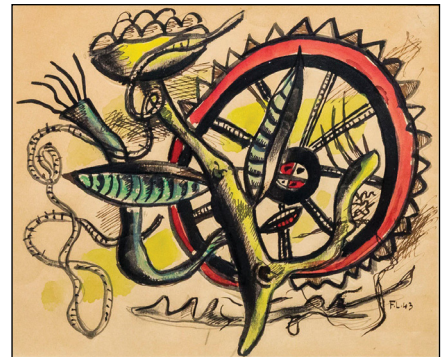
ONLINE CATALOGUE AVAILABLE AT [WWW.GROGANCO.COM](http://WWW.GROGANCO.COM)



**232:** ALDRO HIBBARD, *Winter Scene*, oil, 11 x 14 in., \$3,000 – 5,000



**27:** PLATINUM AND DIAMOND BROOCH, Cartier, \$10,000 – 20,000



**215:** FERNAND LEGER, *Composition*, 1943, watercolor, 7<sup>3/8</sup> x 9 in., \$8,000 – 12,000



**181:** AMERICAN HAMMERED SILVER CENTER BOWL, Tiffany & Co., ca. 1880, \$1,500 – 2,000



**218:** JOHN WHORF, *Old Barges, Bridgetown, Barbados*, watercolor, 15<sup>1/2</sup> x 22<sup>5/8</sup> in., \$3,000 – 5,000



**7:** PLATINUM, TURQUOISE, AND DIAMOND NECKLACE, \$15,000 – 25,000



**13:** GOLD, EMERALD, AND DIAMOND BRACELET, \$15,000 – 20,000



**203:** PABLO PICASSO, *Woman Lamp*, 1955, h: 14<sup>3/16</sup> in., \$10,000 – 15,000  
**202:** PABLO PICASSO, *Personnage avec Mains sur les Hanches*, h: 14<sup>5/8</sup> in., \$15,000 – 25,000



**5:** GOLD, DIAMOND, AND MABE PEARL BROOCH, Cartier, \$4,000 – 6,000



**260:** DAUM NANCY COME GLASS FLOOR VASE, h: 31 in., \$5,000 – 10,000



**205:** JAMES A.M. WHISTLER, *Drury Lane Rags*, lithograph, 6 x 6<sup>1/2</sup> in., \$2,000 – 4,000



**230:** WILLIAM LESTER STEVENS, *Winter Landscape*, 1921, oil, 20 x 24 in., \$5,000 – 10,000



**307:** SHIRVAN VERNEH PANEL, Caucasus, late 19<sup>th</sup> c., 3 ft. 10 in. x 2 ft. 4 in., \$1,500 – 2,000



**GROGAN & COMPANY**  
FINE ART AND JEWELRY AUCTIONEERS

20 Charles Street  
Boston, MA 02114  
617.720.2020  
MAAL 800