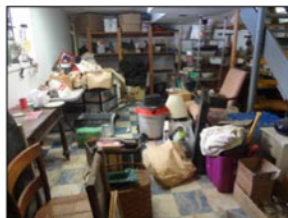


# "THE HUGE SALE"

**Thurs, Fri & Sat, February 18 - 20, 10:00am - 4:00pm**

**Greenwich center hall Colonial home FULL of interesting stuff!**

**Our Numbers at 9:00am – NO Early Birds**



## **PARTIAL LISTING**

**18-20th C. PORCELAINS:** Masons, Adams, Wedgwood, Limoges, Herend, Copeland, Spode, Tiffany, Royal Worcester, Minton, Stangl, Booths, transfer, lusterware, Chinese Export, oyster plates, Staffordshire, armorial, Burslem, Dresden, much more! **ENDLESS!** Individual pieces, complete & partial sets. **19-20th C. FURNISHINGS:** American chest, set of 8 Chippendale chairs, walnut etagere, Eldred Wheeler table, pair loveseats, Empire chairs, bronze-mounted desk, tiger maple chairs, MOP chairs, William & Mary lowboy, campaign chest, RL grasscloth banquette, tilt table, revolving bookcase, needlepoint footstools, floor screen, more! **LIGHTING:** Huge selection! **ALSO:** Cloisonne, copper, some sterling and jewelry, Loetz, Singer featherweight, brass weights, Waterford, plastic Schweppes stands, brass frames, various projects, signed Israeli glass, crystal stemware, mirrors, wall decor, art, more!

**BASEMENT & GARAGE FILLED with WHO-KNOWS-WHAT! STILL UNPACKING !**

**Cash or known checks only! No large bags in house! Porcelain buyers bring paper & boxes!**

Photos will be posted on EstateSales.net as we go!

---

## **Thunder Mountain Road, Greenwich, CT 06831**

*Directions - Merritt SB: Exit 28; R onto Round Hill; immediate L onto Porchuck to end; L onto Riversville; L onto Thunder Mountain. Hutchinson/Merritt NB: Exit 30A; L onto King St (Rte 120A); R onto Sherwood to end; R onto Riversville; L onto Thunder Mountain. From I-684: Exit 3N onto Route 22 North; R onto Old Greenwich Rd/Rte 433 (becomes Riversville); L onto Thunder Mountain.*

**Park considerately on one side of the street only!! Try to stay off grass!! Do not block any mailboxes or driveways!!**

**Sale run by Diana Onyshkewych, 203-448-8652, Redding, CT 06896**