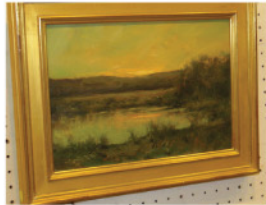


Berman's Auction Gallery

33 West Blackwell Street Dover, New Jersey 07801 (973) 361-3110

AUCTION WEDNESDAY, MARCH 2ND @ 3:00 PM

EXHIBIT TUESDAY 2:00-8:00 PM & WEDNESDAY 12 NOON-3:00 PM



10 X 14 O/C
'RIVER LANDSCAPE' SIGNED
DENNIS SHEEHAN - ONE
OFTWO SHEEHANS



25" X 32" O/C 'PATH TO THE
RIVER - ABOVE CENTER
BRIDGE' SIGNED
JOSEPH BARRETT



PART OF A SELECTION OF BLUE & WHITE
STAFFORDSHIRE: 12½" HOSPITAL BOSTON
PLATTER, 21"
FAIRMOUNT
NEAR PHILA.
PLATTER, CITY HALL
NY
COMPOTE, COURT-
HOUSE
BOSTON
TUREEN



BLUE & WHITE
STAFFORDSHIRE PLATTERS:
16¾" ALMS HOUSE NY,
20¾" CAPITOL
WASHINGTON, 18¾"
PENNS. HOSPITAL PHILA.



25" X 32" O/C 'EARLY
MORNING RIVERTOWN'
SIGNED JOSEPH BARRETT



16½" X 27" O/C
'MENDING THE NETS'
SIGNED P CASSANI



75"L DANISH
TEAK
CREDENZA



SIGNED JOHN STUART
MID-CENTURY
MAN'S CHEST



7' STATTON PRIVATE
COLLECTION
MAHOGANY ONE
PART HIGHBOY



8'6" WALTHAM
MAHOGANY 9TUBE
GRANDFATHER CLOCK



78"L
HENKEL
HARRIS
MAHOGANY
SIDEBOARD



36"W X 36"H X 19"D 17TH
CENTURY BRAZILIAN DOME
TOP CHEST



43"W X 23"D x 38"H
SHERATON MAHOGANY
BOW FRONT CHEST



41½"W X 19"D X 39"H
PERIOD HEPPLEWHITE
CHEST



35"W X 17¼" D X 30"
PERIOD MAHOGANY GAME
TABLE W/BRONZE TRIM

ITEMS NOT PICTURED: JEWELRY INCLUDING 18K ENAMELED
SNAKE BRACELET, LARGE SELECTION ANTIQUE REFERENCE
BOOKS, EARLY GLASS INCLUDING FLINT & SANDWICH, ART
WORK, XMAS, FURNITURE INCLUDING PERIOD, KITTINGER WIL-
LIAMSBURG, MID-CENTURY, FRENCH, WEDGWOOD, COPPER
LUSTER, YELLOWWARE & MUCH MORE.

BERMAN'S AUCTION GALLERY

Auctioneers: Alan & Steve Glaubman

Member of NJ Society of Auctioneers Association, National Auctioneer's Association • 20% Buyer's Premium, Credit Cards Accepted

**For more information, call 973-361-3110 or Visit our website
for additional photos at: www.bermansauctiongallery.com**

