

STANTON AUCTIONS

IMPORTANT AMERICANA & FINE ART

SATURDAY FEBRUARY 20th AT 10am

106 EAST LONGMEADOW RD., HAMPDEN, MA 01036

TELE: 413-566-3161... EMAIL: INFO@STANTONAUCTIONS.COM

PREVIEW: SUNDAY 1-4pm... MONDAY-FRIDAY 10am-4pm... SATURDAY (day of sale) FROM 8:30am-10am

**SEE 100'S OF PHOTOS ON OUR WEBSITE: WWW.STANTONAUCTIONS.COM &
A COMPLETE PHOTOED & NUMBERED CATALOG ON WWW.LIVEAUCTIONEERS.COM**

What a follow up to our blockbuster 2016 Opener! Most Important Period Furniture; Important Paintings; Fabulous Folk Art & Americana in quantity, quality & diversity... From Charleston, SC to Newport, RI to Boston & NYC – You'll find it here! From Jewelry & Coins to Oriental Rugs & Asian Objects – It's HERE! Proceed to our internet sites for all the detail you will need & DON'T MISS THIS ONE!!!



Great set of 6 18th C late Wm & Mary highly carved walnut tall bannister back dining chairs w wooden seats - 48" tall... See our internet sites for all 35 period chairs



Extremely rare & most important exquisite Chinese Chippendale china fret tea table from Charleston, SC ca 1750-1770 attrib to the workshop of Thomas Eife - This is a solid mahogany table (not laminated as a British example would be) featuring intertwined or looped lazy 8's within the fretwork - associated w Thomas Eife - As important a piece of period Southern furniture that has ever come on the market (perhaps one of a kind) 23 1/2" x 22" x 27 1/2" tall



Superb museum quality Pilgrim Century ca 1680-1720 Boston area Prince of Wales crested bannister back mixed hard woods armchair in early crusty dry black paint over orig Spanish Brown - this fabulous form armchair is completely original throughout incl the seat w ZERO repairs & is from a long time State of Maine collection - See Sack, Fine Points of Furniture page 16 "BEST" for similar (one of the best early armchairs we've sold)



Exceptional QA ca 1755 Boston or Salem, MA carved mahog fan carved bonnet top highboy in completely orig cond incl desirable surface - 86" tall - one of 3 period high chests in this sale



Fine & rare form ca 1870 Boston "Blackhawk" copper trotting horse weathervane stamped "Harris & Co" - flattened full body form w fine detail throughout & excellent untouched verdigris surfaces & cond - 20 1/2" tall x 27" long... See our internet sites for more weathervanes



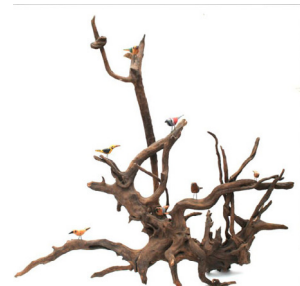
Outstanding Wm & Mary ca 1725-1745 Boston black walnut stretcher based dish top tea table w shaped apron & wonderful turnings 26 1/4" x 23 1/4" top x 27 3/4" tall



Outstanding QA period ca 1735-1755 carved mahog Newport, RI porringer top tea table attrib to the Goddard /Townsend group 35" x 22" top x 26 1/2" tall



Circa 1735-1755 Boston or Salem, MA carved walnut lowboy/dressing tables - one fan carved and the other w concave drawer... See our internet sites for another fine period lowboy attrib to Eliphalet Chapin of East Windsor, CT



Wonderful late 19th C folk art driftwood bird tree featuring 7 wood carved & orig painted birds - 22 1/2" tall x 24" wide... See our internet sites for the entire collection of exceptional Treen



2 outstanding period Chippendale ca 1770's/80's mahog 4 dr New England oxbow ball & claw ft chests - the inlaid example attrib to Joseph Short of Newburyport, MA & the other from Providence, RI... See our internet sites for many more fine period cases



Extremely fine & rare period Chippendale ca 1755-1775 Charleston, SC highest quality Cuban mahog 2 over 3 drawer bachelor chest w fretwork quarter columns & elegant hardware attrib to Thomas Eife - 31 3/4" case width



2 Outstanding period Wm & Mary ca 1725-1745 crotch walnut veneered Boston 2 over 3 drawer ball ft chests - one in completely orig untouched cond



Brian Coole 17" x 29 1/2" o/bd well detailed marine scene depicting Hurst Castle near Southampton featuring many boats, figures, structures, etc... 1 of 2 fine Brian Coole oils in this sale



Louis Moeller (1855-1930) 8" x 10" o/c genre scene w 2 male musicians reading music & playing their instruments



Spectacular Johann Mongels Culverhouse (1820/25-1891/95) 28" x 44" o/c Dutch winter scene w many figures skating, fishing, walking, etc, under a bright blue sky titled Lake Near Rotterdam, Holland

STANTON AUCTIONS

Page 2 of 2



Robert Raudner (born 1853 German) 10" x 14" o/c forest landscape w lake & mountain background



Sgnd Otto Weil (1884-1929) 28" x 36" o/c harbor scene w many boats w figures on board & structures



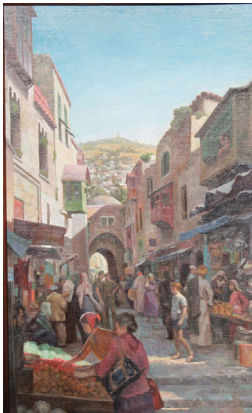
Alfred Russell Fuller (1899-1980) very large 20" x 40" o/c seascape depicting waves crashing on a rocky coast & Horace Brown (1876-1949) 32" x 40" o/c winter snow covered land/riverscape



Early 19th C NY State 15" x 12" gouache on paper very well rendered compote of fruit theorem in orig gilded, molded pine frame - vibrant colors & paper water mark in upper left corner



Brian Coole 12"x15" o/bd NY Harbor scene as seen from The Statue of Liberty featuring many boats w skyline in distance - 1 of 2 Brian Coole oils in this sale



Max Ginsberg (1931-) 36" x 22" o/c laid on board orig cover illustration for the book "The Hill of Evil Counsel" by Amous Oz depicting a Jerusalem street under British occupation during the 1940's (Ginsberg painted the covers of 2 other Oz books)



Wonderful quality pencil sgnd JG Brown ca 1881 black & white engraving of a group of children buying apples from an elderly apple seller - published by Fishel Adler Co NY also pencil sgnd by the engraver - in a wonderful vintage frame 21 1/4" x 19 3/4"



2 Clara Fairfield Perry (1870-1941) paintings incl a 24 1/4" x 30" o/c of water lilies & a 24" x 25" o/bd depicting floral branches against a body of water



Attrib Albert Nemethy Sr 7 1/2" x 17" o/wood panel of the steam paddle wheeler GENUDEWAH built at Canandaigua, NY ca 1900 in fine gilded pine molded frame



Federal period ca 1790-1810 beautiful Portsmouth, NH mahog 4 drawer chests w tiger & birdseye maple drawer fronts incl this bowfront w flared French feet & a fluted leg turreted corner example, both in great cond... See our internet sites for more bowfronts & other fine chests



Victorian carved walnut turtle top marble top table w stretcher base; 19thC Victorian carved walnut 6 drawer lockside chest w rare & very attractive birdseye maple drawer fronts & brass embossed hardware & a 19thC Vict aesthetic movement carved walnut & burlwood 2 dr library table... See our internet sites for much more Vict through fine Custom furniture



Very early ca 1710 New England 2 drawer (presents as a 2 over 3) ball fld cherry blanket chest w arch molded front in old barn finish - 42" tall x 39" wide x 18 1/2" deep



Very fine QA period ca 1755 Boston or Salem, MA carved mahog bracket base 4 drawer slant lid desk w exceptional triple shell carved stepped interior - 38 3/4" case width... See our internet sites for many more fine period desks



Period Chippendale ca 1755-1775 Dutchess County NY fine quality Cuban mahog ball & talon ft corner chair



Wonderful form period Chippendale ca 1755-1775 Boston carved mahog ball & claw ft dining table w shell carved knees & cupid bow apron on ball & talon feet attrib to George Bright - 41" long



Extremely rare pr of ca 1730-1750 QA Boston or NYC mirrors in mahog on pine w orig carved birds, back boards & mirror glass from the estate of noted antiquarian Lawrence Feinberg of NYC - (PAIRS of orig 18th C mirrors are nearly unheard of) - 30" tall x 23" wide



Fine form Wm & Mary period ca 1720 Boston burl walnut veneer on white pine high chest - 61" tall... One of 3 period highboys in this sale



Stacks of period furniture incl these blanket chests in many different sizes & original paint



Stacks (literally) of New England period furniture incl these 3 18th C tavern tables... See our internet sites for details on these & MORE tavern tables



Showing about 25% of the fabulous collection of orig ptd & fine patina antique Treen incl baskets, boxes, bowls, butter stamps, carriers, cricket stool etc shown on a mid 18thC North Shore, MA or Southern NH birch & pine 1 dr stretcher based tavern table w large overhanging 1 board bread-board ended top... See our internet sites for the rest of the treen & several more tavern tables



Wonderful selection of period Federal/Hepplewhite/Sheraton stands incl these beautifully carved &/or exotic inlaid sewing & writing examples... See our internet sites for details on these & more



Fine 19thC Welsh barstool w leather upholstered seat & back - 45 1/2" tall



18thC QA period mahog carved pie crust tilt top tea table from Dutchess County NY featuring acanthus leaf carved shaft, knees & feet ending w Aris toes; Period Chippendale ca 1755 Boston or Salem, MA fine form carved mahog handkerchief shaped tilt top ball & claw ft tea table & a Wonderful early period Chippendale ca 1750 Boston carved mahog 2 tier dish top dumb waiter featuring spiral urn shaft, shell carved knees & ball & talon feet



7'8"x10'1" antique Heriz Oriental rm size rug... See our internet sites for all 30 Oriental Rugs



Wonderful early paint dec sled retaining orig white painted surface w gold & blue stenciling & orig landscape painting w a lake & mountain in background - sled runners end w amazing swan head detail - marked on bottom "1 Brand Sample" - a truly great piece of folk art from a prominent State of Maine collection - 35" long x 16" wide



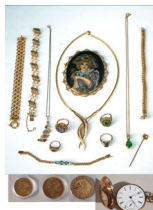
Private collection of antique cast iron orig painted doorstops



Late 19th C rare form pine carved swan weathervane w traces of orig white paint - 32" long



Fine late 19th C small gilt & molded copper spread wing eagle weathervane perched on a ball from a prominent State of Maine folk art collection - 10" tall w 13" wingspan



Showing some of the fine estate jewelry incl 14k gold necklaces, bracelets, rings, etc w amethyst, diamond, blue topaz, pearls, gold coins, Piaget pocket watch, etc



Late 19th C 12" fully jointed peg wooden doll - also known as a Dutch Doll & a Mid-19th C Napoleonic Creche doll w clay hands, head & feet in vintage clothing - 12 1/2" doll... See our internet sites for more antique doll & child related items



Private collection of Chinese Canton... See our internet sites for the rest of the Asian collection



Large early 20thC carved & orig painted spread wing eagle clutching a shield & w "Live & Let Live" banner in its beak 47" wide x 17" tall

NOTE: This ad could easily have been 3 times this size! Check either of our internet sites for the complete picture, come to one of our week long preview days & **DON'T MISS THIS IMPORTANT AUCTION!**
AUCTIONEER: PETER STANTON IMLER MA LICENSE #440 CATERED
TERMS OF SALE: Cash or KNOWN check unless cleared with management in advance. . We accept cash, check, MC, VISA, DISCOVER & AM EX. We accept LIVE, Absentee, Phone & ONLINE Bidding
ACCESSIBLE: From Rte 91 North & South &/or The Mass Pike (Rte 90). We are a suburb of Springfield, MA. A call for directions will save you time: 413-566-3161...Or print them off the website at www.stantonauctions.com
NOTE: In case of SEVERE Weather, the Auction could be postponed to the following day (SUNDAY at the same time)... Hint: Flurries are NOT severe enough... Call if in doubt!