



**WIEDERSEIM ASSOCIATES, INC.**  
APPRAISERS AND PERSONAL PROPERTY CONSULTANTS

**MID-WINTER ANTIQUE AUCTION**  
**SAT, FEBRUARY 13, 2016 at 9:00 am**

Preview Times: Fri, Feb. 12<sup>th</sup> 11:00 am to 7:00 pm & Sat. Feb, 13<sup>th</sup> 7:00 am Until Sale Time at 9:00 am

**Griffith Hall, Ludwig's Corner Firehouse**

1325 Route 100 (Pottstown Pike), Glenmoore PA 19343 (37 miles west of Philadelphia)

**DIRECTIONS:** From The PA Turnpike: Take Exit 312 "Downtown Exit" bear right onto Rte 100 North through the intersection of Route 100 & Route 401 to the Ludwig's Corner Firehouse on the left. From Delaware: Follow I-95 North to Rte 202 North to Rte 100 North, cross Rte 30 and proceed approximately 8 miles through the intersection of Route 100 & Route 401 to the Ludwig's Corner Firehouse on the left.

Phone and Absentee Bid services available • Food available from Catering by Yellow Springs

Selling antique & decorative furniture & accessories, silver, fine paintings & prints, reference books on antiques, gold jewelry, ship models, oriental carpets, and more.

Selling for a Wynnewood, PA Collector; the Estate of Virginia B. Eppinger, Berwyn, PA; a Delaware Estate, and Other Estates & Collections from Wayne and Malvern, PA.

AUCTIONEERS Theodore E. Wiederseim, AL-003361-L & Kimberly K. Hemmingway AU-000359-L

APPRENTICE AUCTIONEER Derek Chandler AA-019509



T.F. Moore, N.J.



by Elliott, London



John Bliss & Co.



Pillsford N.Y.



Hannah Davis



Rare Singer Sewing Machine #1



Fine "Live Steam" 8' Model of the steam Sloop-of-War "U.S.S. Kearsarge"



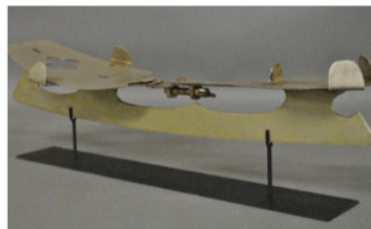
H.E. Boucher Live Steam



Reed and Barton



probably Antonio Munoz Degrain



Rare Store Front Ice Skate



Georgian Bookcase



by D.R. Dimes



Rhode Island



Roman



H.N. Hyneman, Paris, 1872



English Sea Captain



Oil on canvas of General George Washington



Very fine oil on canvas attributed to Peale Family



M.H. Guise 1834



French



F.A. Briscoe



Denechau



Theodore E. Wiederseim, President ~ Gillian B. Wiederseim, Business Manager  
Address: Wiederseim Associates, Inc., P.O. Box 470, Chester Springs, PA 1942 • Ph: 610-827-1910  
Fax: 610-827-1930 • Email: info@wiederseim.com • Website: www.wiederseim.com

TERMS OF SALE: Cash or check with proper identification. NOTE: 20% buyer's premium and PA 6% sales tax applied to all purchases unless proof of resale number. All purchases must be removed by the end of the sale. Separate Terms & Conditions apply to Internet Bidding via Live Auctioneers [www.liveauctioneers.com](http://www.liveauctioneers.com)