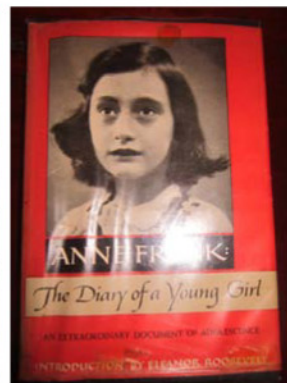
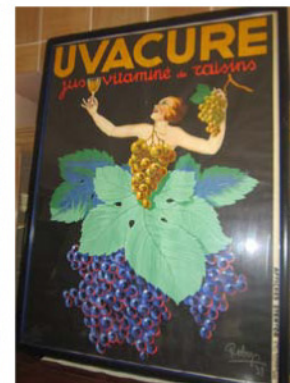
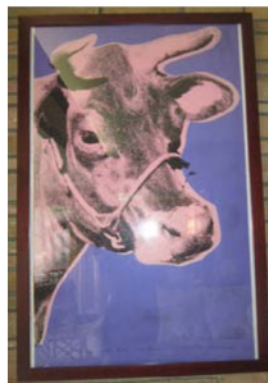
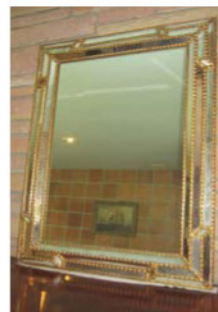
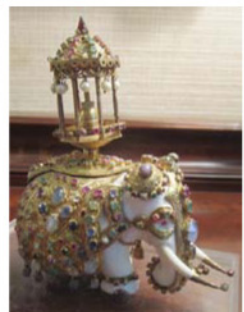
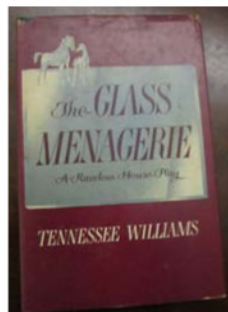


ELIZABETH JACKSON ESTATE SALES

Modern Art & Antiques in Greenwich, CT

Friday, Saturday & Sunday: January 22 -24
10am - 5pm



1957 "Mad Men" era home in stunning backcountry lakeside location is site of our first sale of the New Year. Wonderful modern art & sculpture with signed pieces by Andy Warhol, Jasper Johns, Oldenberg, Larry Mohr & others, beautiful modern and antique furnishings including a 1906 Steinway piano, 19th c paintings, Lalique & Baccarat crystal, carved Chinese figures, a fabulous jeweled ivory elephant, a large sailfish trophy plus the owner's extensive library of musical theatre books and records with many first editions. Another unique sale not to be missed!

Furniture: 1906 Steinway model A baby grand piano, 19th c mahogany bowfront chest, double pedestal mahogany dining table w/3 leaves, set of 6 bow back dining chairs, 6' mahogany sideboard, console bar/server, antique glass front vitrine, 19th c French sideboard, art deco style console table, 10 Hoffman style armchairs, down sofa & wing chair, down chaise,

servicing cart, vintage M. Villency limestone pedestal table, mid-century slotted bench, vintage teak desk, leather top oval writing desk, pr 19th c carved walnut side chairs, Venetian mirror, 3 marble top side tables, cut leaf flitop side table, pr large blue & white lamps, vintage floor lamps, oriental carpet.

Art: signed prints by Andy Warhol, Jasper Johns, Louise Nevelson; paper sculpture by Oldenberg, 2 metal sculptures by Larry Mohr, bronze sculpture by M. Chianelli, marine o/c by John Tyler, o/c landscape by D. Ainsley, o/c & w/c by L. Dunlop, etchings by D. Thorne & others, carved ivory, jade, stone figures & animals.

China & Crystal: Royal Copenhagen, Herend, Spode, Wedgwood, Cauldon, Rosenthal, large set of Franciscan ware; Baccarat, Steuben, Lalique, Wm Yeoward, Simon Pearce.

For priority entry, email ejpriority@optonline.net or call 203-857-4009 before 6pm on Thursday, January 21.

Directions: Take exit 29 (Lake Avenue) on Merritt Parkway. Go north on Lake Avenue for 1.5 mi; at end of Lake Avenue, go straight onto Wilshire Road. Follow signs to sale house at end of Wilshire Road.

In case of severe weather, call 203-857-4009 for cancellation information.

Visit our Liberty Square Showroom every Wednesday & Saturday

ejacksonllc@msn.com

207 Liberty Square, Norwalk, CT

www.elizabethjacksonllc.com