



**Hyde Park
Country
Auctions**

HYDE PARK COUNTRY AUCTIONS Outstanding Country Americana Sale

We've Moved... New Location:

900 Dutchess Turnpike, Poughkeepsie, NY

Saturday, January 9, 12 Noon

Previews: Fri, Jan 8, 1pm-6pm; Sat, Jan. 9, 9am - Noon (or by appt one week prior to sale)

Selling a private collection of stoneware with many rare and unusual pieces, partial contents of an old Catskill Mountain Stonehouse, country items from the Tudor Estate, Boston, MA, private collection of local historical memorabilia, including political buttons, partial contents of a Pleasant Valley village home, other collections gathered throughout the Hudson Valley.



Tiger Maple Slant Front - 18th c.



Sample of Early Kachina Dolls



1 of 3 Heart in Hand Valentines



Child with Doll - Sample of Silhouettes



Period Sheraton Doll Chairs



L. Norton & Co - Incised Birds



Windmill Weight



Sample of Copper Weathervanes



Outstanding 42" L. Weathervane



Sample of Decoys



Circleville NY (Orange County)



Bergen County NJ Coverlet 1834



Artistic Carving Co. Wall Plaque



Sample of Country Artwork



Sample of Early Stoneware



American Militia - Early 19th c.



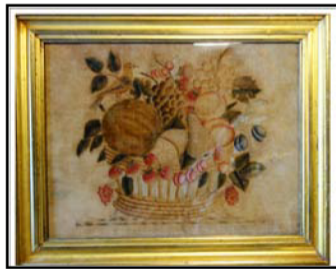
Hipplewhite Over Mantle Mirror



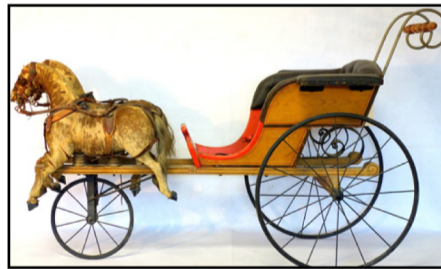
Eye Dazzler Navajo Rug



Chippendale Linen Press



Bird & Fruit Theorem - 19th c.



Child's 19th c. Sulky



Selection of Early Bottles & Glass



Sample of Painted Cupboards



N.E. Queen Anne Tea Table



Northwest Coast Effigy Bowl



Mohawk Valley Blanket Box

HIGHLIGHTS: Ten country cupboards in paint: 3 corner cupboards, 18th century Rhode Island red chimney cupboard, 19th c. grain painted wardrobe, 18th c. hanging corner cupboard with raised panel door, etc. - Thirteen blanket boxes: Mohawk Valley shoe-horn in original decorated paint, smoke grained, many others 18th-19th c. - Various work tables & tavern table - Candlestands - Several Queen Ann tables including tea table - Large painted accountants desk with 2 drawers - Country chests - American Chippendale linen press - Tiger maple slant front desk with ball feet - Country chairs: Chippendale wing chair, Bannister backs, Windsor early servers including Sheraton with birdseye drawer fronts, mustard grain painted 2 drawer, etc. - 18th c. dough box - 3 Meeting house benches - Good 3 seat painted Sheraton settee - Primitive cross-buck table - 3 multi-drawer spice/store cabinets - 7 good weathervanes including a rare 42" full body copper leaping stag, game cock, horses, early painted wooden banner Angel Gabriel design, etc. - Trade & advertising signs including unusual full body copper mermaid - Outstanding stoneware collection featuring an L. Norton jug with incised double bird and potted flower plus 18th & 19th crocks/jugs, - redware including 2 rare matching Circleville NY pots (damaged), a signed N. Judd Rome NY pot, etc. - baskets - decoys including several good

masons - quilts - Blue/white jacquard coverlet dated 1834 signed David Haring (NJ) - oriental carpets - hooked rugs - samplers - folk art - carved & painted life size fish - 2 carved eagle wall plaques - advertising signs - early lighting - Brady photo of NY Regiment in Harper's Ferry Va - Country artwork including theorems, portraits, landscapes, miniature portraits, etc. - Collection of early hand forged iron fireplace & kitchen utensils - early bottles - miniatures including 2 Sheraton painted doll chairs - barber pole - spice boxes - painted pantry boxes & buckets - other treenware - architectural - child's 19th century sulky drawn by 2 horses - other early child's riding toys - local historical items from the VanKleeck family Dutchess County NY including political pinbacks, Lafayette ribbon - American Shako militia hat - Native American items including fine eye-dazzler rug, Northwest coast effigy bear bowl, collection of Kachina dolls 1900-1930, Inuit carvings, etc. - Outstanding large ornate Hepplewhite mirror plus several Sheraton & Chippendale - yellowware & mocha - Chinese export porcelains - signed figural horse food chopper - old Teddy bears - transferware china including flow blue - collection of alphabet plates - double wheel coffee mills - oversized wall papered band box - unusual theatrical statue signed "Bijou / Dixey as Adonis Patent 1898 - Early brass candle chandelier - iron door stops - duck form shooting target - large sailing ship diorama - Floor standing 19th c. book press - etc.

Email djnavarra@aol.com.

(845)-471-5660

www.hpcountryauctions.com OR bid online

www.liveauctioneers.com

liveauctioneers