



WINTER ANTIQUES SHOW

SPECIAL SHOW SECTION



Classic + Modern
Timeless Design

WINTER ANTIQUES SHOW



January 22-31, 2016



Weather vanes, ca. 1870, Olde Hope Antiques, Inc.

A BENEFIT FOR
EAST SIDE HOUSE SETTLEMENT
CELEBRATING 125 YEARS OF COMMUNITY SERVICE

Opening Night Party • January 21, 2016

Park Avenue Armory, New York City

winterantiquesshow.com

Loan Exhibition
Legacy for the Future:
Wadsworth Atheneum Museum of Art

Premier Sponsor

BROWN HARRIS STEVENS
Established 1873

Design Sponsor

Istdibs

Presenting Sponsor



Loan Exhibition Sponsor

B
BESSEMER
TRUST

A LA VIEILLE RUSSIE
ADELSON GALLERIES, INC.
ALEXANDER GALLERY
MICHAEL ALTMAN FINE ART
APTER-FREDERICKS
ARADER GALLERIES
ARONSON OF AMSTERDAM
MICHELE BEINY, INC.
H. BLAIRMAN & SONS LTD.
JONATHAN BOOS
BOWMAN SCULPTURE
JOAN R. BROWNSTEIN
AND PETER H. EATON
RALPH M. CHAIT GALLERIES, INC.
COHEN & COHEN
PHILIP COLLECK, LTD.

THOMAS COLVILLE FINE ART
CONNER • ROSENKRANZ LLC
THOMAS COULBORN & SONS LTD.
COVE LANDING
DANIEL CROUCH RARE BOOKS
DE JONCKHEERE
DIDIER LTD
GEOFFREY DINER GALLERY, INC.
DONZELLA
LES ENLUMINURES
PETER FETTERMAN GALLERY
THE FINE ART SOCIETY PLC
PETER FINER
GEMINI ANTIQUES LTD.
MICHAEL GOEDHUIS
GLASS PAST

THOMAS HENEAGE ART BOOKS
HILL-STONE, INC.
HIRSCHL & ADLER GALLERIES, INC.
HISTORICAL DESIGN INC.
HOSTLER BURROWS
STEPHEN & CAROL HUBER
HYDE PARK ANTIQUES, LTD.
JAMES INFANTE
BARBARA ISRAEL
GARDEN ANTIQUES
KAGEDO JAPANESE ART
KENTSHIRE
KESHISHIAN
KELLY KINZLE
BERNARD & S. DEAN LEVY INC.
NATHAN LIVERANT AND SON, LLC

LOST CITY ARTS
MACKLOWE GALLERY, LTD.
MAISON GERARD LTD.
TODD MERRILL STUDIO
CONTEMPORARY
JOAN B MIRVISS LTD
LIZ O'BRIEN
THE OLD PRINT SHOP, INC.
OLDE HOPE ANTIQUES, INC.
PETER PAP ORIENTAL RUGS, INC.
GERALD PETERS GALLERY
RONALD PHILLIPS LTD
FRANK & BARBARA POLLACK
AMERICAN ANTIQUES & ART
SYLVIA POWELL
C.L. PRICKETT

JAMES ROBINSON, INC.
DAVID A. SCHORSCH~EILEEN M.
SMILES AMERICAN ANTIQUES
SCHWARZ GALLERY
S.J. SHRUBSOLE CORPORATION
ELLE SHUSHAN
ELLIOTT & GRACE SNYDER
GALERIE ST. ETIENNE
CAROLLE THIBAUT-POMERANTZ
THROCKMORTON FINE ART, INC.
TILLOU GALLERY
RUPERT WACE ANCIENT ART
WARTSKI
ROBERT YOUNG ANTIQUES
EXECUTIVE DIRECTOR
CATHERINE SWEENEY SINGER



WINTER ANTIQUES SHOW

SPECIAL SHOW SECTION





STEVEN & CAROL HUBER, Old Saybrook, Conn. — This finely worked scenic needlework was created by an anonymous student attending Mary Ralston’s School in Easton, Penn., circa 1830. Mary’s teaching career spanned about 35 years, circa 1805–40, and this needlework was worked with fine crewel wool on a linen ground and is conservation mounted in a not original but old mahogany frame. It is ex collection of J. Stogdell Stokes, and family tradition indicates the needlework descended in his wife’s family line.



MICHAEL ALTMAN FINE ART & ADVISORY SERVICES, LLC, New York City — Everett Shinn (1876–1953), “Broadway, Late in the Afternoon, After Matinee,” 1899, pastel, charcoal, gouache and watercolor on artist board, 21¾ by 29½ inches, signed lower right: Everett Shinn/1899.



Winter Antiques Show Schedule Of Events



Show Dates

Friday to Sunday, January 22-31

Show Hours

Daily: Noon to 8 pm
Sundays & Thursday: Noon to 6 pm

All events take place in the Board of Officers Room and/or on the show floor

Thursday, January 21

Opening Night Party 5 to 9 pm

Saturday, January 23

Loan Exhibition Lecture Series at 2 pm
MATRIX Mash-up: Contemporary Artists and the Wadsworth Atheneum’s Collections
Patricia Hickson
Emily Hall Tremain Curator of Contemporary Art
Wadsworth Atheneum Museum of Art

Sunday, January 24

Loan Exhibition Lecture Series at 2 pm
The Atheneum Goes for Baroque: In the Vanguard of Collecting Italian Baroque Paintings
Oliver Tostmann
Susan Morse Hilles Curator of European Art
Wadsworth Atheneum Museum of Art

Monday, January 25

The Chubb Personal Insurance Panel
Discussion at 10 am
Hosted by Chubb Personal Insurance
Art and Authenticity
Authenticity is central to the value of a work of art. The panel will discuss certificates of authenticity and the issues that arise when these certificates are lost.

Loan Exhibition Lecture Series at 2 pm

Wisdom Begins in Wonder: The Cabinet of Art & Curiosity
Linda Roth
Senior Curator and Charles C. and Eleanor Lamont Cunningham Curator of European Decorative Arts
Wadsworth Atheneum Museum of Art

Tuesday, January 26

Loan Exhibition Lecture Series at 2 pm
Benefactors and Their Buildings: The Distinctive Architecture of the Wadsworth Atheneum
Eugene Gaddis
William G. Delana Archivist and Curator of the Austin House
Wadsworth Atheneum Museum of Art

Thursday, January 28

Loan Exhibition Lecture Series at 2 pm
Nature Made Strange: Inventing the American Landscape
Erin Monroe
The Robert H. Schutz, Jr Assistant Curator of American Paintings and Sculpture
Wadsworth Atheneum Museum of Art
Young Collectors Night at 7-9 pm

Friday, January 29

Loan Exhibition Lecture Series at 2 pm
Cellophane, Spectacle, and Sex: The Theatrical Impulse in American Art
Robin Jaffee Frank, PhD
Chief Curator and Kriebel Curator of American Paintings and Sculpture
Wadsworth Atheneum Museum of Art

Expert Eye Evening 5:30-8 pm



Photo: Ted Bryant

CONNER·ROSENKRANZ

19th & 20th Century American Sculpture

A pair of stained glass windows (1918) commissioned by

Gertrude Vanderbilt Whitney

for her famed Macdougall Alley studio
in Greenwich Village, N.Y.

Robert Winthrop Chanler (1872-1930)
66 x 30 inches each



19 East 74th Street, NY 10021 (212) 517-3710 www.crsculpture.com info@crsulpture.com by appointment

ADAA
member



WINTER ANTIQUES SHOW

SPECIAL SHOW SECTION



THROCKMORTON FINE ART



Exhibiting at the
62nd Annual Winter Antiques Show

Maya, Quiche Lidded Incensario with God GI, Late Classic
550 - 950 CE, Terracotta with Polychrome, H: 26 in.
(Robert Willson Collection, 1960s, Miami, Florida)

145 EAST 57th STREET, 3rd FLOOR, NEW YORK, NY 10022
Tel. 212. 223. 1059 Fax. 212. 223. 1937
www.throckmorton-nyc.com info@throckmorton-nyc.com

WINTER ANTIQUES SHOW

SPECIAL SHOW SECTION

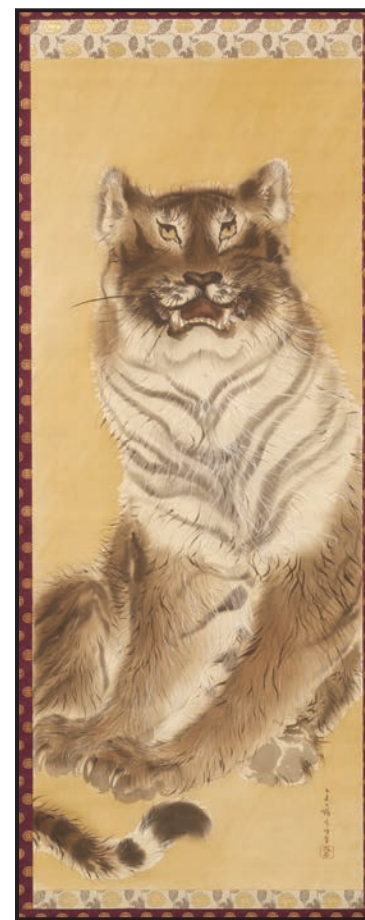


TILLOU GALLERY, Litchfield, Conn. — Double portrait of two children wearing red and green dresses and holding grapes, circa 1820–30, New England, possibly Vermont. It is oil on Eastern white pine panel, 42½ by 38 inches framed, 35-by-30-inch panel. Condition: Reinforces where panel was split, although very little paint loss. Ultra-violet light shows in-painting only along the seams, no restoration to other areas, including faces and bodies. The provenance lists The Galerie St Etienne, N.Y., Hirschl and Adler, circa 1960s illustrated *A Simple Beauty* by Pat Van Gelder.

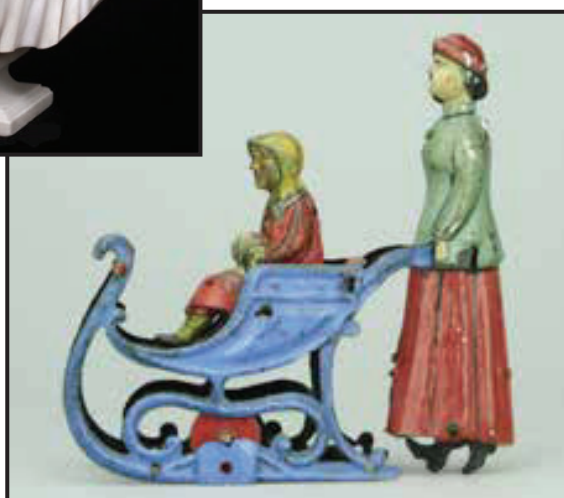
CONNER • ROSENKRANZ, New York City — Hiram Powers (American, 1805–1873), “America,” 1850, marble on original socle, edition of 28 measuring 28 by 19½ by 14 inches. It is signed H. Powers Sculp (near of socle).



MICHAEL ALTMAN FINE ART & ADVISORY SERVICES, LLC, New York City — Maurice Prendergast (1858–1924), “Evening Shower, Paris,” 1892–94, oil on panel, 13½ by 8¼ inches, framed: 18⅞ by 13½ inches, signed lower left: Prendergast.



JOAN B. MIRVISS LTD, New York City — Kishi Chikudo (1826–1897), “Majestic Seated Tiger,” 1895, hanging scroll, 51 by 20½ inches exclusive of mounting, 77½ by 26½ inches (29 with end rollers) —Richard Goodbody photo



GEMINI ANTIQUES LTD, Oldwick, N.J.

S.J. SHRUBSOLE, New York City — A pair of modern American silver “circa 70” pattern candelabra, Providence, R.I., 1960, by Gorham Mfg. Co., 9¼ inches wide, stock number V8546. Designed by the American Donald Colflesh in 1958 and introduced by Gorham in 1960.

GALERIE ST. ETIENNE

Specializing in Self-Taught Artists Since 1939

Exhibiting at
the Winter Antiques Show,
Park Avenue Armory
at 66th Street, New York City,
January 22–31,
Booth 65

24 West 57th Street
New York, N.Y. 10019
212-245-6734
gallery@gseart.com
www.gseart.com



Anna Mary Robertson (“Grandma”) Moses. *Sugaring Off*. 1940–42. Oil on canvas. Signed, lower right. 16 1/8” x 20 1/4” (41 x 51.4 cm). Kallir 1610.



WINTER ANTIQUES SHOW

SPECIAL SHOW SECTION



Gemini Antiques Ltd.

Specialists in American Toys, Banks and Soldiers

P.O. Box 635 Oldwick, New Jersey 08858



Leon Weiss 917-991-7352 leonweiss@me.com

Steven Weiss 212-729-0011 sweiss57@me.com



WINTER ANTIQUES SHOW

SPECIAL SHOW SECTION

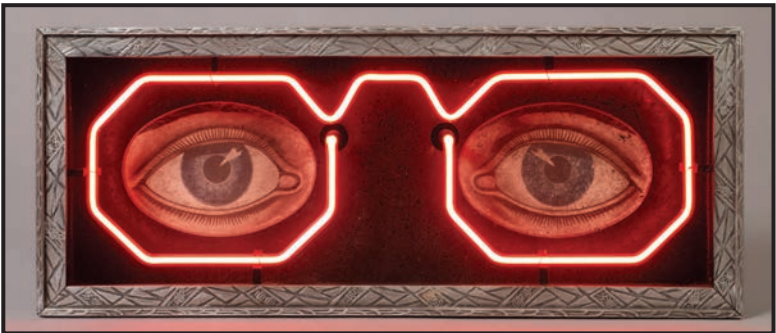




BARBARA ISRAEL GARDEN ANTIQUES, Katonah, N.Y. — Carved marble baluster block plumbed as a fountain, American (Vermont), circa 1905, 42 inches high.



ELLE SHUSHAN, Philadelphia — The artist's sister-in-law, Emily Pullman, by Richard DaLee, circa 1845.



TILLOU GALLERY, Litchfield, Conn. — Optometrist trade sign, American, mid-Twentieth Century, of metal, carved wood frame and neon tubing. It measures 9¾ inches high, 23½ inches wide and 5¾ inches deep, and it is rare to find an example in such great condition.

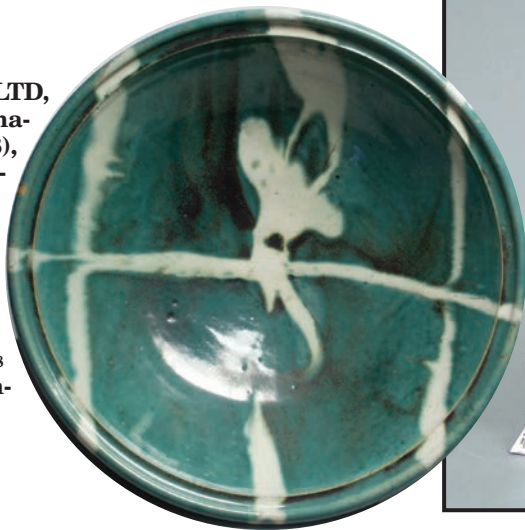


MICHAEL ALTMAN FINE ART & ADVISORY SERVICES, LLC, New York City — Edward Hopper (1882–1967), “South Truro Post Office I,” 1930, watercolor and pencil, 13¾ by 19¾ inches, signed lower right: Edward Hopper/South Truro.



Winter Antiques Show
January 22-31, 2016

JOAN B. MIRVISS LTD, New York City — Hamada Shoji (1894–1978), very large, deep turquoise-green glazed large bowl with ladle-poured decoration in creamy white glaze, circa 1950–58, glazed stoneware measuring 6 by 19⅞ by 20⅜ inches. —Richard Goodbody photo



H. BLAIRMAN & SONS LTD

Sideboard
Designed by Peter Waals
(1870-1937)
English (Chalford),
circa 1930

Oak with ebony detail
Height: 54 ¾ in.
Width: 99 in.
Depth: 22 in

Provenance:
David and Christina Latto,
thence by descent to
their son David Latto,
and by descent to
a private collection

Literature:
"The Work of Peter Waals:
Individual Craftsmanship
at Chalford in the
Gimson Tradition,"
The Cabinet Maker,
28 September 1935, p. 3

PO Box 6374,
London W1A 3UR

tel: +44 (0) 207 493 0444
fax: +44 (0) 207 495 0766

email: blairman@blairman.co.uk
www.blairman.co.uk

by appointment:
Mayfair, London



WINTER ANTIQUES SHOW

SPECIAL SHOW SECTION



Junius Brutus Stearns (1810-1885), American, active Virginia and Vermont *Hiawatha's Courtship*, 1861. Signed and dated (l.r.): JBS 61. Oil on canvas, 29 ¼" x 36". Provenance: Kennedy Galleries.



TILLOU
GALLERY

Rare and Unusual Paint-Decorated Blanket Chest, New England, ca. 1820-1830. White pine. The unique "lozenges and dots" free hand painted surface on a salmon background color is in a remarkable state of preservation. 25"h x 40 ½"w x 20"d

39 WEST STREET, ON THE GREEN, LITCHFIELD, CT
(860) 567-9693

WWW.TILLOUANTIQUES.COM



WINTER ANTIQUES SHOW

SPECIAL SHOW SECTION



LEFT: John Singer Sargent, *Portrait of Charlotte Cram*, 1900. RIGHT: Elie Nadelman, *Standing Girl*, c. 1920.



MICHAEL ALTMAN FINE ART
& ADVISORY SERVICES, LLC

———— www.mnafineart.com ————

Please visit us at the Winter Antiques Show
JANUARY 22–31 • PARK AVENUE ARMORY, NYC • BOOTH 51



WINTER ANTIQUES SHOW

SPECIAL SHOW SECTION





STEVEN & CAROL HUBER, Old Saybrook, Conn. — Sally Goodridge worked a family register format typical to the Lynn, Mass., area, circa 1815, recording her parents and their ten children. The solidly worked lower section with a monument and a weeping willow tree commemorates the deaths of two family members, Rand and Eliza. At the center is a large and stately three-story, twin chimney Federal house behind a picket fence; to the right, three sheep and a town. The embroidered scene is surrounded by a stylized rose vine and foliage border. A group of five hollow-cut silhouettes, all in the original frames, depicting family members and three copy books accompany the sampler. The silhouettes from left: Dan Graves, Sally Goodridge, no name, Polly Goodridge and Moses Goodridge, and the frames measure 5 by 4 inches. The sampler, silk on linen, measures 20¼ by 17 inches sight.



BARBARA ISRAEL GARDEN ANTIQUES, Katonah, N.Y. — Pineapple finials of carved limestone, American, circa 1900, measuring 34 inches high.



S.J. SHRUBSOLE, New York City — A rare American antique silver railroad-form cruet, New York, circa 1853, by Tiffany & Co., 14½ inches high, stock number V8645, designed as a circular railroad track mounted with railcars that rotate around the handle. Engraved with the initials of the Hartford, New Haven and Springfield Railroad. How amusing!

Winter Antiques Show January 22-31, 2016



MICHAEL ALTMAN FINE ART & ADVISORY SERVICES, LLC, New York City — John Sloan (1871-1951), “Russian Girl,” 1906-07, oil on canvas measuring 32 by 26 inches, 44½ by 38½ inches framed, signed upper right: John Sloan, inscribed on edge: Russian Girl Rosen-scheim (sic) 1906/7 Russian.

ELLE SHUSHAN, Philadelphia — Portrait miniature by Diana Dietz Hill, painted in Calcutta, signed and dated 1786.



GEMINI ANTIQUES LTD, Oldwick, N.J.



JOAN B. MIRVISS LTD, New York City — Katsushika Hokusai (1760-1849), 36 views Fugji Shore at Tago near Ejiri on the Tokaido, 1830, Oban yoko-e.



GEMINI ANTIQUES LTD, Oldwick, N.J.



CONNER • ROSENKRANZ, New York City — William Hunt Diederich (American, 1884-1953), Salamander King firescreen, circa 1920, wrought iron, sheet metal and mesh measuring 34¼ by 54 by 10 inches.



TILLOU GALLERY, Litchfield, Conn. — Bennington flint enamel foot bath, circa 1848-58, measuring 8½ inches high, 20 inches wide and 14½ inches deep, and stamped Bennington (Vermont) in a scalloped rib form with exceptional glaze.



GALERIE ST ETIENNE, New York City — Morris Hirshfield (1872-1946), “Dog,” pencil on tan wove paper, titled lower center, inscribed “Original Morris Hirshfield Sketch,” lower left, and signed lower right by Hannah Hirshfield Rentzer (the artist’s daughter). It measures 10½ by 18¼ inches and was it drawing for the painting “Girl and Dog.”



MICHAEL ALTMAN FINE ART & ADVISORY SERVICES, LLC, New York City — John Sloan (1871-1951), “Glimpse of Gloucester Trolley,” 1914, oil on canvas measuring 24 by 20 inches, framed 32 by 28 inches, signed lower left: John Sloan / '14, inscribed on reverse: RPYOB John Sloan Sloan / Gloucester July 12/14.

WINTER ANTIQUES SHOW

SPECIAL SHOW SECTION



Miniature Chest of Drawers,
probably Shinnston WVA, circa 1820
Signed "Thomas Morris" in chalk
Walnut with exceptional inlay

Kelly Kinzle

FINE ANTIQUES

9 Center Square, P.O. Box 235
New Oxford, PA 17350
kellykinzle@comcast.net

717-495-3395



WINTER ANTIQUES SHOW

SPECIAL SHOW SECTION





H. BLAIRMAN & SONS LTD, London — Ceiling light with opalescent glass shade, the light designed and manufactured by W.A.S. Benson (1854–1924). The shade manufactured by James Powell & Sons (1834–1980). It is English (London), circa 1900, and appears in *Benson Electrical Fitting* trade catalog, 1902, page 48, no. 1166.



GEMINI ANTIQUES LTD, Oldwick, N.J.

MICHAEL ALTMAN FINE ART & ADVISORY SERVICES, LLC, New York City — Andrew Wyeth (1917–2009), “Snowy Morning,” circa 1947, 21¾ by 16 inches, signed lower left Andrew Wyeth.



GALERIE ST ETIENNE, New York City — Anna Mary Robertson (Grandma) Moses (1860–1961), “The Old Oaken Bucket,” 1949, oil on pressed wood, signed lower right, and measuring 24 by 30 inches.



BARBARA ISRAEL GARDEN ANTIQUES, Katonah, N.Y. — Carved granite peacock, Japanese, circa 1930, measuring 68 inches high and 77 inches wide.





CONNER • ROSENKRANZ, New York City — Herbert Ferber (American, 1906–1991), “The Bow,” 1950, in bronze and measuring 47 by 26½ by 23¾ inches, edition no. 1 of 2, and signed Ferber 50 (top of self base). It is marked (thumb print) (top of base).

STEPHEN & CAROL

HUBER

America's Preeminent Source for Girlhood Embroideries





Sarah Kuhn, the maker of this silk embroidery, lived on Cambridge St. in Boston, MA and was the oldest of 10 children born to John Kuhn and Sarah Lapham. In 1812 at age 18 she completed this embroidered memorial to her younger brother inscribed: *IN MEMORY OF DANIEL KUHN who died Oct. 23d. 1810 AEt 7 years.* Also that year, she married George Fuller and they had 8 children.

FORTY FERRY ROAD, OLD SAYBROOK

CONNECTICUT 06475

Tel 860-388-6809 • Hubers@AntiqueSamplers.com

www.AntiqueSamplers.com

REMEMBERING

KATŌ YASUKAGE (1964-2012):

Ceramic Works from the Katō Family Collection



Tall Flower Vessel, 2007
18 1/2 x 12 x 8 in.
Oribe-glazed stoneware

JOAN B MIRVISS LTD
JAPANESE ART Antique - Contemporary
39 East 78th Street, 4th Floor | New York NY 10075
Telephone 212 799 4021 | www.mirviss.com



WINTER ANTIQUES SHOW

SPECIAL SHOW SECTION



*Antique Silver
English
American*

SHRUBSOLE

S.J. SHRUBSOLE CORP.

104 East 57th Street, New York, NY 10022 • 212/753-8920 • Fax 212/754-5192 • www.shrubsole.com

Established London 1912 • Established New York 1936

*Jewelry
Objets d'Art
Gold Boxes*



An Exceptional Mixed-Metals Japonisme Vase
New York, c. 1878 by Tiffany & Co.
Height: 9¾" Weight: 20 oz.



We buy silver and jewelry every day.
To see more of our inventory please visit our shop, or www.shrubsole.com





WINTER ANTIQUES SHOW

SPECIAL SHOW SECTION





S.J. SHRUBSOLE, New York City — An early American silver teapot, New York, circa 1760, by John Heath. It measures 10½ inches long, stock number V8926. A fine rococo or Chippendale example with extensive engraving.



H. BLAIRMAN & SONS LTD, London — Armchair designed by E.G. Punnett (1862–1942) and manufactured by William Birch Ltd. It is English (High Wycombe), circa 1900. An identical chair is in the collection of the Victoria and Albert Museum, London, and another in the Crab Tree Farm collection, Lake Bluff, Chicago. Literature includes *The Studio*, 1907, page 293 (For a chair of this pattern in C.R. Ashbee’s Norman Chapel, Broad Campden) and Elizabeth Aslin, *19th Century English Furniture*, London, 1962, pl. 123.



MICHAEL ALTMAN FINE ART & ADVISORY SERVICES, LLC, New York City — Thomas Eakins (1844–1916), “Portrait of Frank Macdowell” (The artist’s brother-in-law), 1886, oil on canvas measuring 24 by 20⅛ inches.



ELLE SHUSHAN, Philadelphia — Portrait miniature of a gentleman writing a love message on a tree, by Pierre Rouvier, signed, circa 1785.



GALERIE ST ETIENNE, New York City — Anna Mary Robertson (Grandma) Moses (1860–1961), “Dark Sky,” 1953, oil on pressed wood, signed lower left, and measuring 18¾ by 24 inches.

ELLE SHUSHAN



King George IV Coronation Jewel
by Henry Bone, R.A.
enamel on gold set with diamonds, 1821

FINE PORTRAIT MINIATURES

215.587.0000
www.PortraitMiniatures.com



BARBARA ISRAEL GARDEN ANTIQUES, Katonah, N.Y. — Pair of terracotta figural groups after Louis Gossip, French, circa 1880, each approximately 51 inches high and 40 inches long.



STEVEN & CAROL HUBER, Old Saybrook, Conn. — In 1836 Eliza Yost, of Chester or Montgomery County, Pennsylvania, worked this graphic sampler at aged 14. She was born in 1822 and never married, but inherited a substantial estate. At age 30, Eliza, using her own childhood sampler as a guide, was probably instrumental in helping her 12-year-old niece, Margaret Finkbiner, create her sampler dated 1852. Margaret, who’s mother died when she was 3 years old, was raised by her aunt Eliza. Note, the similar motifs are on the two samplers and the earlier sampler is more finely stitched. The Yost sampler, silk on linen, measures 21½ by 17½ inches; the Finkbiner sampler measures 18½ by 16¾ inches framed.

WINTER ANTIQUES SHOW

SPECIAL SHOW SECTION



TILLOU GALLERY, Litchfield, Conn. — Northwind architectural ornamentation, American, mid-Nineteenth Century, cast iron, with exceptional surface. It measures 10 inches high, 7 inches wide and 4 inches deep.



H. BLAIRMAN & SONS LTD, London — Pair of wall lights designed by William White (1825–1900), English, circa 1870. The provenance lists L. Clement Francis, Quay Hall, Cambridgeshire; thence by descant. A pair of candlesticks designed around 1864 by White for John Garrett of Bishop's Court, Devon, is in the collection of the Fitzwilliam Museum, Cambridge (M. 2A & B – 1994).



MICHAEL ALTMAN FINE ART & ADVISORY SERVICES, LLC, New York City — John Sloan (1871–1951), "Independence Square, Philadelphia," 1900, oil on canvas, 32 by 26 inches, framed: 37¼ by 32⅜ inches, signed with monogram lower right: John Sloan Inscribed on reverse: Independence Square - Philadelphia - Sloan.



GEMINI ANTIQUES LTD, Oldwick, N.J.



S.J. SHRUBSOLE, New York City — An early American silver teapot, Boston, circa 1790, by Ebenezer Moulton, 10¾ inches in length, stock number V80914. A fine Federal piece with swag and tassel decoration that was popular in Boston.



GALERIE ST ETIENNE, New York City — John Kane (1860–1934), "Pittsburgh Environs," 1929, oil on canvas signed and dated lower left and measuring 20 by 36 inches.

Jonathan Boos

Specializing in 20th-Century American Art

801 Madison Avenue
5th Floor
(between 67th & 68th St.)
New York, NY 10065

tel 212.535.5096
fax 212.535.3554
jb@jonathanboos.com
jonathanboos.com

Elizabeth Catlett (American, 1915–2012)

Torso, Portrait of Joan, 1960

25¾ x 14½ x 11¾ inches

Terracotta

Signed with artist's initials



WINTER ANTIQUES SHOW

SPECIAL SHOW SECTION



BARBARA ISRAEL GARDEN ANTIQUES



A large carved granite peacock with unfurled tail and articulated feathers, on integral rectangular base, Japanese, ca. 1930. 68 ins. high, 77 ins. wide, 18 ins.

Barbara Israel Garden Antiques specializes in the finest antique garden ornament and furniture from Europe and America. Call to inquire about our on-site ornament placement and design services.

By Appointment • Katonah, NY • 212-744-6281
www.barbaraisrael.com