

SPECIAL SHOW SECTION The Art, Design & Antiques Show at Wallace Hall

The Art, Design & Antiques Show at Wallace Hall January 22-24

Friday 11am-7pm

Saturday 11 am-6pm

Sunday 11am-5pm

TRIFLES Antiques
Clifford A Wallach
Donald Rich Antiques
From Here To Antiquity
Kip McKesson African Art
Antique American Wicker
Schorr & Dobinsky
Firehouse Antiques
Framont Fine Art
Embellish Antiques
A Bird in Hand
The Village Braider

Brad Reh Fine Jewelry
Christine Magne Antiquaire
Andrew Spindler Antiques
Whitehall at the Villa Antiques
T.J. Antorino Antiques & Design
Marcy Burns American Indian Arts
The Norwoods' Spirit of America
Judith & James Milne At Home Antiques
Julia Santen Vintage Posters & Fine Art
Lorraine Wambold Estate Jewelry
Shaia Oriental Rugs of Williamsburg
Lawrence Farms Antiques

BABOU
Sorab & Roshi
Polaris Gallery
Vincent Callahan
Earle D. Vandekar
Carole Pinto Fine Arts
Drucker Antiques
Melody Rodgers
Cottage + Camp
Garvey Rita Art
Glen Leroux

Wallace Hall
Church of St. Ignatius Loyola
980 Park Avenue at 84th St
New York, N.Y. 10028



Admission \$15

(516) 971-7710

RehShows.com



The Art, Design & Antiques Show at Wallace Hall

SPECIAL SHOW SECTION



VILLAGE BRAIDER, Plymouth, Mass. — Mid-Twentieth Century painting by A. Crawford, a ship captain who painted these harbor scenes as he traveled the world. One is “Summer Evening in Newport” and the other, “Formentera, Gaelearis Island.” Each measures 18 by 24 inches.



DRUCKER ANTIQUES, INC, Mount Kisco, N.Y. — Danish Modern brooch by Bent Gabrielsen, gold with ancient Egyptian beads.



DONALD RICH INTERIORS & ANTIQUES, New Canaan, Conn. — Pair of lions dating from the early Twentieth Century and measuring 9 by 22 by 12 inches high.



DONALD RICH INTERIORS & ANTIQUES, New Canaan, Conn. — This oak bible box on custom stand, American, circa 1660–80, measures 24 by 17 by 22½ inches.



FIREHOUSE ANTIQUES & AUCTIONS, Cocoa, Fla. — This Delaware church sign, poster paint on early poster board with wooden stretcher, measures 49 by 36 inches and was used for bake sales. It dates circa 1930s–40s.

Drucker Antiques

AMERICA’S LEADING SPECIALISTS IN GEORG JENSEN JEWELRY, HOLLOWARE & FLATWARE

Exhibiting at The Art, Design & Antiques Show at Wallace Hall, Booth No. 12



No. 5



No. 385C



No. 179



No. 432



No. 407

From a Collection of Georg Jensen Sterling Silver Pitchers

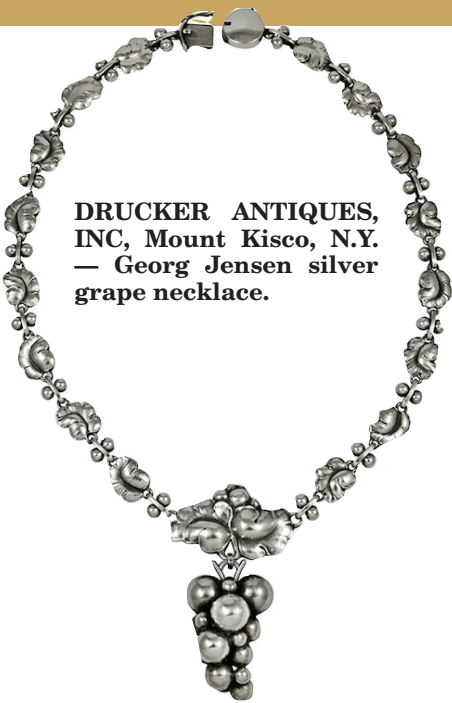
www.druckerantiques.com

Mount Kisco, New York 10549
bill@druckerantiques.com / jensenlady@aol.com
T: 914-923-4560 / 212-794-8536

SPECIAL SHOW SECTION The Art, Design & Antiques Show at Wallace Hall



ANDREW SPINDLER ANTIQUES & DESIGN, Essex, Mass. — A fine quality bronze mounted incised black marble mantel clock in the Assyrian Revival style, the architectural case surmounted by a lamassu and flanked by standing male and female figures, the front decorated with incised pseudo-hieroglyphics in black and gilt against a crimson ground, the ormolu bezel around a white enamel dial. It is French, circa 1860, and measures 25³/₈ inches high, 22 inches wide and 6³/₄ inches deep.



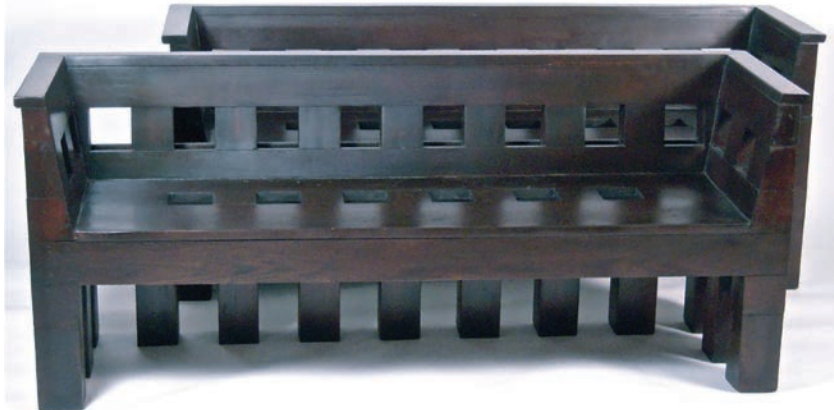
DRUCKER ANTIQUES, INC, Mount Kisco, N.Y. — Georg Jensen silver grape necklace.



JUDITH & JAMES MILNE, Kingston, N.Y. — An early Nineteenth Century American curved settle bench in old red paint that opens in back to reveal storage space or clothes cupboard.



JUDITH & JAMES MILNE, Kingston, N.Y. — A large, carved marble seashell.



REHSHOWS.COM

ANDREW SPINDLER ANTIQUES & DESIGN, Essex, Mass. — A pair of graphic and beautifully made benches in dark walnut stained solid oak, of rectangular form, with a flange around the top edge of the back and arms, with an open grid pattern on back and seats. They are American, circa 1910, and originally came from a library in Pennsylvania. Each measures 29 inches high, 69¹/₄ inches wide, 20⁵/₈ inches deep and seat height, 17 inches.



DONALD RICH INTERIORS & ANTIQUES, New Canaan, Conn. — English, and dating from the early Nineteenth Century, an oil on canvas, School of J. Herring, "Barn Friends," measuring 25 by 30 inches.

Village Braider Inc.

48 Sandwich Street, Plymouth, Mass. 02360, 508-746-9625



George Jay Rogers "Museum Storage", oil on canvas c. 1960's 30 1/2" x 40 1/2"

The Art, Design & Antiques Show at Wallace Hall

SPECIAL SHOW SECTION



JUDITH & JAMES MILNE, Kingston, N.Y. — A pair of Art Deco cat andirons.



POLARIS GALLERY, Southampton, N.Y. — Polaris Gallery will be showing original watercolors and prints from the worlds of fashion, theater and children's book illustrations, including this sketch for James McMullan's Comedians."



FIREHOUSE ANTIQUES & AUCTIONS, Cocoa, Fla. — A fine figured maple child's chair in excellent color, with remnants of the original rush seat. Dating from the late Eighteenth Century, it has great stretcher and finials and measures 23 inches tall, 13 inches wide and 11 inches deep. It was found in a multi-generation house in Lewes, Del.

FINEST
FOLK ART



Art supply store trade sign from New England
44" x 31". Early twentieth century. Original
paint and gold leaf. Sign wrapped in hand
forged iron strapping. Gold leaf and paint
brushes have fine crackalure.

Firehouse Antiques Center and Firehouse Too!!
are open Tuesday- Sunday 10:00 to 5:00
located on Maryland's Eastern Shore, in Galena, Maryland.
410-648-5639
firehouseantiques.PT@gmail.com
www.galenaantiquedistrict.com

ANDREW
SPINDLER

ANTIQUES & DESIGN



A WHIMSICAL FIREBACK IN THE FORM OF A NEOCLASSICAL
BUILDING ELEVATION WITH A SCROLLED PEDIMENT
SURMOUNTED BY TWO SQUIRRELS FLANKING AN URN WITH
FLOWERS, IN WHITE PAINTED CAST IRON, WITH 2 FOLDING
WROUGHT IRON SUPPORTS IN THE BACK,

English or American, circa 1920's-1930's.

May also be displayed on a wall when supports are removed.

Height: 30 3/4" Width: 22"

Depth: 13" (when supports are fully extended)

163 Main Street • P.O. Box 278 • Essex MA 01929
Tel: 978 768 6045 • info@spindlerantiques.com
www.spindlerantiques.com
Find us on Facebook

SPECIAL SHOW SECTION The Art, Design & Antiques Show at Wallace Hall



ANDREW SPINDLER ANTIQUES & DESIGN, Essex, Mass. — A pair of neoclassical French Campana-shaped urns made of brown, cream and green glazed agate earthenware, with applied creamware ram's head handles, each impressed "Orleans" on the underside of square plinth bases. They measure 8¹/₈ inches high, 8 inches in diameter, and 3¹/₂-inch-square bases, circa 1770-90.



ANDREW SPINDLER ANTIQUES & DESIGN, Essex, Mass. — A pair of sculptural English Regency period Trafalgar chairs, English, circa 1810, measuring 32¹/₂ inches high, 16 inches seat height, 17¹/₈ inches wide and 21³/₈ inches deep.



POLARIS GALLERY, Southampton, N.Y. — This is an original photograph of Andy Warhol taken, printed and signed by celebrity photographer Ron Galella. The back reads "June 12, 1983: Bronx, New York. The jungles of Africa are too hot and wild for artist Andy Warhol, so he chose to see exotic animals during a Sunday afternoon to the Bronx Zoo. Andy took the safari — trail train through the crowded park and ended up drawing more stares and responses than did the exotic species housed in the world famous zoo. This was Andy's first visit to the zoo."



POLARIS GALLERY, Southampton, N.Y. — Suite of five oils by Lee Haber — en plain air paintings of New York City and Paris.

AT WALLACE HALL
JANUARY 22-24
ADMISSION \$15
(516) 971-7710
REHSHOWS.COM



DRUCKER ANTIQUES, INC., Mount Kisco, N.Y. — Georg Jensen Blossom sandwich server.



FIREHOUSE ANTIQUES & AUCTIONS, Cocoa, Fla. — This early Twentieth Century one-board sign, measuring 24 by 15 inches, was removed from a fire station. It has overall crackalure.

JUDITH & JAMES MILNE



Copper Locomotive weathervane retaining it's original surface. c-1930s 25" L x 12" H



Carved Locomotive Weathervane retaining traces of its original painted surface. 37" L x 15" H



Full set of wooden architectural shapes in old paint.



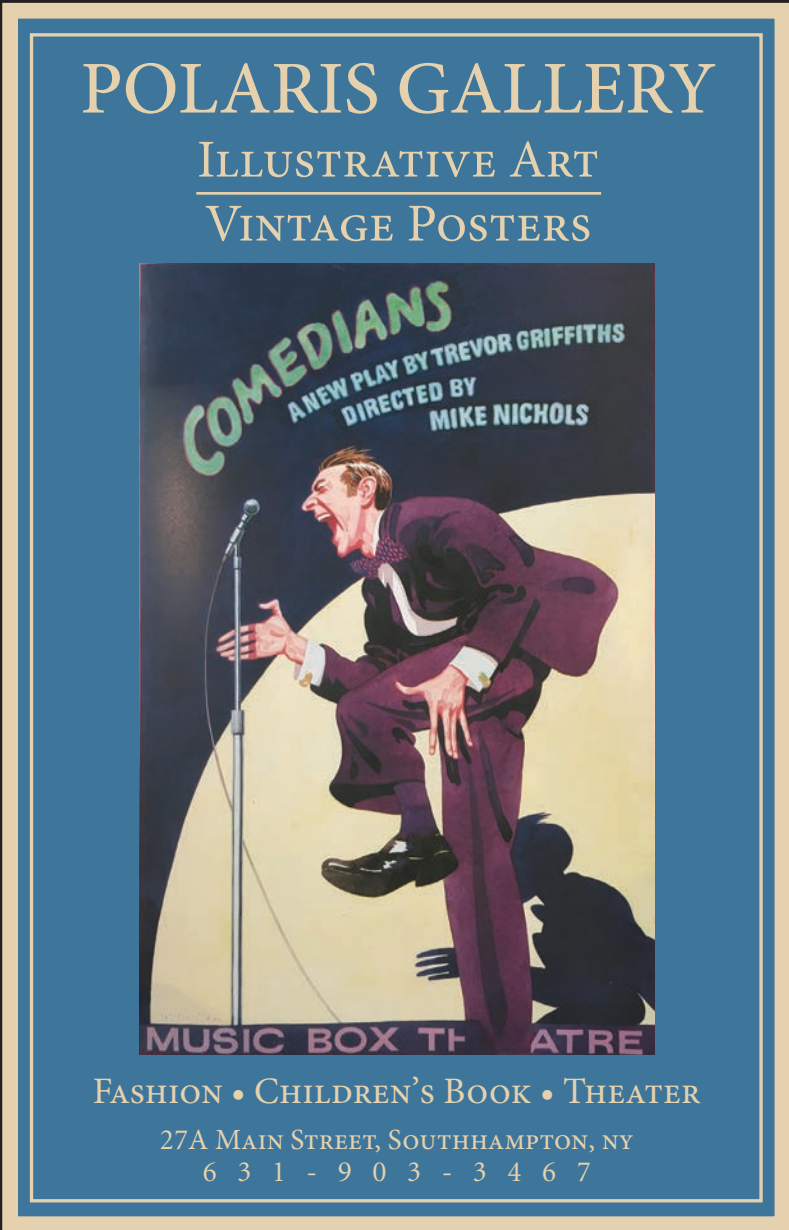
Sheet iron horse & rider weathervane dated 1877.

AT HOME ANTIQUES
81 Broadway, Kingston, NY
845.331.3902 • 917.402.1778

We are located in the
Rondout Historical District
of Kingston.

Winter hours: 11 to 5 Wednesday
and Thursday : Friday and Saturday
11 to 6pm and Sunday noon to 5pm.
Or by appointment.

The Art, Design & Antiques Show at Wallace Hall **SPECIAL SHOW SECTION**



VILLAGE BRAIDER, Plymouth, Mass. — Three views of an early Twentieth Century model of a coastal Maine dory, 48½ inches long, in the original salmon paint.



JUDITH & JAMES MILNE, Kingston, N.Y. — A large, Continental still life painting, measuring 37 by 50 inches, unframed, dating circa 1800.



DRUCKER ANTIQUES, INC, Mount Kisco, N.Y. — Sterling silver and onyx cufflinks by Margaret De Patta.

Donald Rich Interiors & Antiques



Pair of Samson Vases
c1860, 18 1/2" high



Gilt Convex Mirror
Early 19th c, English or American, 27" Diam.



George III Sideboard
c1790-1800, English, 62" x 28" x 35"H