

# AMERICANA, CLOCKS, & FINE ARTS AUCTION

**SATURDAY, JAN 9, 2016 10 am**

**MERRILL'S AUCTION GALLERY  
137 JAMES BROWN DRIVE  
WILLISTON, VERMONT**

**DIRECTIONS:**

From Interstate 89 exit 12 proceed north on Rte 2-A towards Essex Jct. for 2.5 miles, turn left by Shell station.

**PREVIEW:**

Fri, Jan 8<sup>th</sup> from 1:00- 5:00  
Sat, Jan 9<sup>th</sup> from 8:00am until sale time, 9:30am  
Sun, Jan 10<sup>th</sup> from 8:30am until 10am  
& or by prior appointment.

See [WWW.MERRILLSAUCTION.COM](http://WWW.MERRILLSAUCTION.COM)  
for photos & link to online catalogue



18kt gold Terrier figurial pin



18th c Chinese carved arm chair



19th c Chinese 5 dwr elm sideboard



19th c mahogany huntboard



American Historical flasks (1)



Boat-shaped dining room table w chiseled top & faux stone pedestal base by Peter Gutkin Designs



Jac Young (1888-1940) Winter landscape



Italian Classical mahogany specimen case



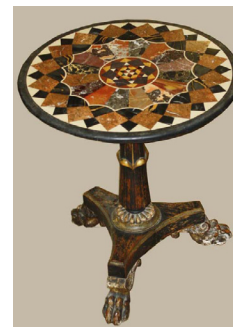
Connecticut Valley Sheraton reeded leg one drawer stand.



Frank Gehry cafe table built for MIT and pr of Knoll Studio Chairs



Cleve Gray (American 1918-2004) Nightingale acrylic on canvas signed and dated on reverse



Italian Marble top inlaid stand



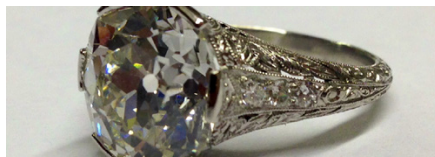
Jose Marie Mijares Fernandez (Cuban 1921-2004) Mujer Sentada en lina oc signed and purchased from artist



Jose Marie Mijares Fernandez (Cuban 1921-2004) Tristeza oc signed and purchased from artist



Brother Thomas Bezanson (1929-2007) signed and decorated porcelain bulbous vase with flared rim



5pt 6 kt diamond and platinum ring with GIA report



Patek Philippe platinum link lady's wrist watch



Early 20th c Quebec carved penguin figure



Chinese Shi Wan style flambe vase 25in

**EARLY FURNITURE:** Great Conn River Valley inlaid Sheraton stand, W. John Walton label; rare VT Sheraton birdseye and banded mahogany inlaid kettle stand; set of 10 NYC Sheraton sq. back carved mahogany dining chairs (see Charles Montgomery plates 58-60); important Northern Italy early carved gilt & pt court chair in original coat of arms, metallic thread uph; Mass. Chippendale ox bow slant lid desk; Chippendale ball & claw foot d.l. table; Conn River Valley scalloped tilt top stand; Geo III carved Chippendale side table; 18<sup>th</sup> c Quebec armoire in orig surface; 18<sup>th</sup> c William & Mary arm chair in as found condition; 64" early PA walnut 2 dwr stretcher base table; VT elliptic front Sheraton cherry & mahogany chest; classical mahog lady's 3 dwr writing stand; huntboard; Southern Hepp molded top chest; Chip ogee front chests; nice classical mahog two part secretary; classical brass inlaid card table; Sheraton inlaid cherry & mahogany sideboard; Pietra Dura stand; bucket bench in red pt; 60" Regency burl walnut tilt-top breakfast table; Am. Abbattant secretary with basket of fruit crest; Hepp. curly maple d.l. table; pr curly maple Hepp 2 dwr stands; Vict library chair with lectern; French jardiniere stand; 63" Quebec 1 dwr table in red wash & much more. **PIANOS:** Nice Steinway & Sons baby grand piano; classical Morgan & Davis NYC piano forte. **MID-CENTURY FURNITURE:** "Skyline Cabinet" modular book matched eucalyptus wood by D L Armstrong & Co depicting view of building skyline multiple cabinets approx. 9' h.; pr of Knoll Studios chairs by Frank Gehry; 1999 Frank Gehry café table for M I T; Boat-shaped dining room table w/ chiseled top & faux stone pedestal base by Peter Gutkin Designs; "Saturn" stool by Dakota Jackson; pr of "Falcon" chairs & ottoman by Sigurd Ressel for Vatne Mobler; other Mid-Century & Modern pcs; **ART: Art of the Americas:** Three paintings and two drawings by

Jose Marie Mijares Fernandez (Cuban 1921-2004) Mujer Sentada en lina, Tristeza, Mujer Surrelista en un Abanico, Mujer en Vidro de Colores, Mujer Abstracta con bustas all purchased from the Artist; C. Jac Young (Am 1880-1940) winter country lane o/c 25 x 29" ; Cleve Gray (American 1918-2004) Nightingale; William Hart (American 1823-1894) Sunrise off Grand Manan, New Brunswick 1858 - o/c 14 x 24"; James Grabowski (American 20thc ) Rainbow Tryptych three o/canvas each 40 x 31"; Steven Seibel (American contemporary) Skinmoon 2 1996- Oil and graphite; Sylvester Phelps Hodgson (American 1830-1906) White Mountains scene Signed lower right 18 x 30"; John White Alexander (American 1856-1915) Portrait of F Hopkinson Smith 1887 - Charcoal on paper; John Henry Twachtman (American 1853-1902) Country lane water color on paper 9 x 6; Leonard Baskin (American 1922-2000) Geriault; **European Art:** Richard Cosway (English 1742-1821) 18th c signed portrait miniature on ivory of a gentleman; Albertus Gerard Bilders (Dutch 1838-1865) Bruner landscape 8 x 6"; Kikuo Saito (Japan 1939-) The Blue Harp 74 x 58"; Horace Duchene de Vere ( French 19th c ) Genre portrait of Old Man with Umbrella- o/c 13 x 9"; Edouardo Pisano (Italian 1912-1986) Flamenco dancers 17 x 21"; **Vermont Art:** Luigi Lucioni (American 1900-1988) Portrait of a Handsome Young Man o/c 24 x 20"- Ex- Walter Cerf Collection; Zedekiah Belknap (American 1781-1858) Portrait of a young woman with pearl cross circa 1835; Thomas Curtin (VT 1899-1977) Winter Scene 16 x 20", Autumn Trees 12 x 10", Mount Mansfield in autumn: "; Gayleen Aiken (VT 1934-2005) A Boat Ride crayon on paper 14 x 17"; Walton Blodgett (Vermont 1908-1963) Maples on the lane; **FORMAL ACCESSORIES:** ca 1910 Tiffany Studios NY "Adam" pattern silvered desk lamp; ca 1920 Handel bronze floor lamp with leaded slag glass shade; early 20th c attributed to Tiffany Studios floral vase; 19th c Italian pillared building-form collection case; 19th c Continental burl &

maple veneered Secretaire Abbatant desk form valuables case; 19th c clockwork automaton w/ painted landscape; Kahlil Gibran (1922-2008) signed hand-hammered bronze sculpture; mid 19th c Dutch ear irons- Zeeland & Friesland- 3 gilt brass headdresses, lace bonnets, & h/c photos; 1873 Falkland Islands ceremonial mace; w/ inscriptions; 19th c icon on wooden panel; Warner Plangg (Canadian 1934-1994) bronze sculpture of a caribou bull; Ig Belle Bellerose Modern stone sculptures; massive brass & wrought iron floor lamp; 20th c V Vadgen Classical female white metal sculpture/ lamp; massive 19th c brass corkscrew wine bottle opener marked Loftus, London; 19th c brass bound lap desk w/ secret drawer; cast iron coal hod; cast iron lion fireback; Gretsch 4 string banjo w/ resonator; unmarked violin w/ signed Tourte bow; French leather trunk; Packard type auto trunk; Ig fossils specimen; Mid- Century Modern lamps; inlaid boxes; **COUNTRY ACCESSORIES:** Union leader cut plug tobacco advertising poster in it's original Union leader frame; early Canadian carved & painted wooden figure of Joan of Arc; early 18th c star pattern quilt with chintzed sections; early 19th c applique quilt with center bird motif; folkly 20th c fish weathervane; redware; blue decorated stoneware; Historical flasks; VT medicine bottles; 19th c German spinning wheel w/ Black Forest carved figures; Grenfell pictorial hooked rug with floral motif, older version tag "made in Labrador"; 19th c scrimshaw walrus tusk ceremonial mace w/ whaling ships, 1908 scrimshaw Indian elephant tusk w/ whaling scenes & several inscriptions; carved wooden horse figure with old painted wooden base; 19th c colored sandpaper picture; 20th c Quebec or American folk art carved & painted wooden penguin; miniature 19th c Quebec "Habitant" chair in old finish; early



Kahlil Gibran (1922- 2008) signed hand-hammered bronze sculpture-one of a kind, purchased directly from home of the artist



Luigi Lucioni (1900-1988) Portrait of a young man oc- Ex Walter Cerf



Skyline Cabinet modular book matched eucalyptus wood by D L Armstrong & Co



Richard Cosway (English 1742-1821) 18th c signed portrait miniature on ivory of a gentleman



Set of 10 Early Hepplewhite NYC Squareback chairs



Sylvester Phelps Hodgdon (American 1830-1906) White Mountains scene



Thomas Curtin (VT 1899-1977) Mount Mansfield in Autumn ob estate stamped



Massive 18th c Edo period Hannya (Oni) carved wooden Noh mask



Tiffany 18k yg split time stop watch open face pocket watch



Tiffany Sterling Brides Basket



Tiffany Studios Adam silvered desk lamp



Union leader cut plug tobacco advertising poster in its original frame



Early Canadian carved & painted wooden figure of Joan of Arc



William Hart (American 1823-1894) Sunrise off Grand Manan, New Brunswick 1858



Zedakiah Belknap (1781-1858) Portrait of a young lady with gold cross



Important Northern Italy early carved gilt & pt court chair



One of two Zebra Skin rugs and African game animal pillows

h c high/ low signaling ball originally from Charlotte, VT Stagecoach Inn; collection of American historical flasks; Vt medicine bottles; 20th c carved wooden oussel horse; 19th c carved wooden figure of St Francis; early 20th c pig figurat tin Je sign/ clock case/ coin op; old ptd wooden store signs; lg doll house; signed PA ter mold; eagle quilt; early basket; folky carved wooden horse; sm ptd box; ptd oden canteen; homespuns; early redware; ovoid crocks & jugs; blue dec neware; period signed American pewter; **JEWELRY:** 5.63 ct. old mine rd. brilliant itaire diamond ring in platinum setting w GIA; 3.42 ct. rd. brilliant yellow diamond j w GIA; 3.2 ct rd cut brilliant dia. ring; other 1 & 2 ct dia solitaire rings; Cartier dia. pin; fine dia & emerald cocktail ring; Edwardian dia & platinum open work celet approx. 9 ct t.w.; many figural gold pins & brooches inc. dogs, cats, bears; ny fine yellow gold bangles; Jade bangle & beads; period citrine bangle & oches; large polished aquamarine nugget necklace; cameos; Victorian jewelry; **WATCHES:** Tiffany 18k yg split time stop watch/ open face pocket watch; Patek lippe platinum link ladies wrist watch; Patek Philippe 18k yg ladies link wrist tch; Art Deco dia. & sapphire wrist watch; sev. other gold pocket watches; **VEVER & COINS:** Tiffany sterling silver reticulated basket; Cartier sterling silver w/ w/ applied flowers; I Holm Denmark sterling silver covered vegetable bowl; org Jensen Acanthus sterling flatware set- 91 pcs; Tiffany Mid Century sterling ble handled open footed dish; Tiffany Mid Century sterling open footed dish; ed & Barton "Hepplewhite" sterling flatware set- 83 pcs; 1907 Whiting Mfg Co Art uveau reticulated oval sterling bowl; Theodore Starr NY sterling footed bowl; J1 Roger Williams sterling reticulated low tazza w/ Italian Renaissance repousse sign; Gorham "Medici" sterling ladle; early English silver serving spoon; 1913 US ) gold double eagle; 1890 US \$10 gold eagle; 1907 US \$10 gold eagle; ancient sek Alexander the Great silver tetradrachm; **ASIAN FURNITURE & CESSORIES:** 19th c Chinese 5 dwr elm sideboard; 19th c Korean multi-drawer

document chest; 18th c Chinese stand; 18th c Chinese armchairs; 19th c Chinese carved marble top stands; important massive 18th c Edo period Hannya (Oni) carved wooden Noh mask; 19th c Japanese katana sword case; pr of carved wooden Bali wedding couple temple figures; Papua, New Guinea carved wooden shield; mid to late 20th c Chinese ivory statue of a beautiful woman; old Japanese Netsukes; fine Chinese embroidered silk table covering w/ lg coins; old Chinese carved wooden Foo dogs; **ASIAN PORCELAINS & ACCESSORIES:** 18th c blue & white porcelain dragon & bird dec palace vase- 23" h; fine group Shiwan stoneware inc. lg ox blood dragon vase & figure; 18th c blue & white scenic tea pot; Qianlong dynasty cov jar w character & scene; Qianlong enamel porcelain figures; Japanese mixed metal vase; lg Famille Rose platter & charger; elm wood & copper brazier; Japanese shark skin teapots; 19th c polychrome lacquered oval dragon dec. covered box; many other pcs; **ORIENTAL CARPETS & RUGS:** fine Persian open medallion area rug- very fine weave; Mid 20th c Persian main carpet; Heriz & Sarouk main carpets; several other main carpets; Tekke Sariq double bags, still joined; other tribal bagfaces; Persian tribal area rugs; Zebra skin area rugs; Zebra pillows; **GLASS & CHINA:** "Ancient Ruins" flow blue tureen & platter; Royal Doulton "Mignonette" dinner service; Waterford chandelier; sev lg sets of Waterford stemware inc "Tara" & "Ashley"; amberina syrup; Vict glass; English transfer ware inc "Shooting a Leopard" meat platter; Gaudy Welsh house scene; Brother Thomas vase; Staffordshire figures; Cliché paperweight; other paperweights; Steuben swirl glass vases; Dresden compotes; Venetian art glass wines; Majolica; 17 pc. Paris porcelain desert set; Sarah Gutierrez vase; lg boar's head handle polychrome tureen; Bennington Parian bull & calf; Wedgwood fairy luster cup; Bennington foot bath; Van Briggel 9" vase; mocha bowl; Minton Gold Rose dinner service; early English wines incl etched & slams;

**BID IN PERSON, BY ABSENTEE BID, BY PHONE, LINK TO ONLINE BIDDING, AND SIGN UP FOR EMAIL NOTIFICATIONS AT [WWW.MERRILLSAUCTION.COM](http://WWW.MERRILLSAUCTION.COM) ONLINE BIDDING AVAILABLE THROUGH [WWW.LIVEAUCTIONEERS.COM](http://WWW.LIVEAUCTIONEERS.COM)**

**TERMS:** Visa, Mastercard, cash, or approved check. 15% Buyers Premium for credit card, cash, or check  
Chairs provided, food available from Cobblestone Deli  
All Items Sold As Is With No Implied Or Expressed Warranty.

**DUANE MERRILL & COMPANY**  
**AUCTIONEERS & APPRAISERS**  
Specializing In Estate & Antique Auctions  
Three Generations Selling Since 1931

Mailing Address: PO Box 558, Williston, Vt. 05495  
Consignment Auction Gallery: 802-878-2625  
e-mail: [info@merrillsauction.com](mailto:info@merrillsauction.com)