

CONNECTICUT SPRING ANTIQUES SHOW

Participating Dealers

Connecticut

Martin Chasin Fine Arts LLC
 The Cooley Gallery
 Kirtland Crump
 Roberto Freitas
 Tucker Frey
 Garvey Rita Art and Antiques
 The Hanebergs Antiques
 Hanes and Ruskin
 Nathan Liverant and Son Antiques
 Mad River Antiques
 Oriental Rugs Ltd.
 Derik Pulito Antiques
 Thomas Schwenke
 Lewis Scranton
 Stiles House Antiques
 Jeffrey Tillou Antiques
 Jane Wargo
 Paul and Karen Wendhiser

Delaware

John Chaski
 Matt Greig Antiques
 James Kilvington

Kentucky

Dover House Antiques
 W. T. Thistlethwaite Antiques

Massachusetts

Charles and Barbara Adams
 Scott Bassoff & Sandy Jacobs
 Blue Heron Fine Arts
 Colette Donovan
 Peter H. Eaton Antiques Inc.
 Anne Hall Antique Prints
 Samuel Herrup
 Donna Kmetz
 Leatherwood Antiques
 Paulette and Hilary Nolan
 DBR Antiques-Doug Ramsay
 Grace and Elliott Snyder
 Village Braider

Maryland

Firehouse Antiques

Maine

Jewett and Berdan
 Bill Kelly
 Port N' Starboard Gallery
 Dennis Raleigh

Michigan

Bette & Melvyn Wolf

Missouri

Arborfield Americana Antiques LLC

New Hampshire

Mark and Marjorie Allen
 Hollis Brodrick
 John Rogers

New Jersey

Randi Ona

New York

Artemis Gallery
 Axtell Antiques
 J. Gallagher Antiques
 Daniel and Karen Olson

Ohio

David Good Antiques

Pennsylvania

Jeff R. Bridgman American Antiques
 Steven Still
 Whitman's Antiques
 Emele's Antiques

Vermont

Stephen-Douglas Antiques

Our Media Sponsors:



America's premier show featuring
 pre-1840's American furniture, folk art,
 pottery, porcelain, fine art and so much more.



CONNECTICUT SPRING ANTIQUES SHOW

March 25-26, 2017



The Hartford Armory
 360 Broad Street, Hartford, CT

- ◆ Over 60 exceptional dealers
- ◆ Educational talks
- ◆ Free on-site parking
- ◆ Admission \$15
- ◆ Collectors 35 and younger admitted free on Sunday

Saturday 10 - 5, Sunday 11 - 4

ctspringantiquesshow.com • 860-345-2400



Presented by The Haddam Historical Society • Managed by Karen L. DiSaia



“An American Treasure Trove.”

- Antiques and the Arts Weekly

CONNECTICUT SPRING ANTIQUES SHOW

Special Show Section



Connecticut Spring Antiques Show To Benefit Haddam Historical Society *'Digging Up History' At The Thankful Arnold House*

Come see what *Antiques and The Arts Weekly* calls "the singular popular showcase for American furniture and decorative arts." The Connecticut Spring Antiques Show in Hartford has a long-standing reputation as one of the most distinguished antiques shows in the nation. Although the focus is on early Americana, the show does mix-it-up with appropriate accessories and has recently added folk art and antique garden fixtures.

Discover New England recently noted that the Hartford Spring Show is "a fantastic antiques show where collectors and historians will enjoy a look at our country's past and have an opportunity to own a piece of history." The show offers free adjacent parking and a lovely café in the landmark Hartford Armory catered by the Officers' Club. On Sunday visitors age 35 and under will receive free admission.

The show has earned the reputation for offering educational and entertaining programs and this year is no exception. On Saturday, March 25, at 2 pm, Bonnie Plourde, archaeologist, will talk about the recent excavation at the Thankful Arnold House Museum and on Sunday, March 26, at 2 pm, Jeff Bridgman of Jeff R. Bridgman Antiques, Inc will talk on the "The Fun of Collecting Early Political Campaign Flags, Banners and Kerchiefs."

The show benefits the Haddam Historical Society's educational programming, exhibitions and collections care, as well as the preservation of the Thankful Arnold House Museum, which is located on the Connecticut Women's Heritage Trail and a member of Connecticut's Historic Gardens. Like many small organizations and museums throughout the country the society tries hard to make their



programs and site relevant to the community and to excite and engage participants in local history.

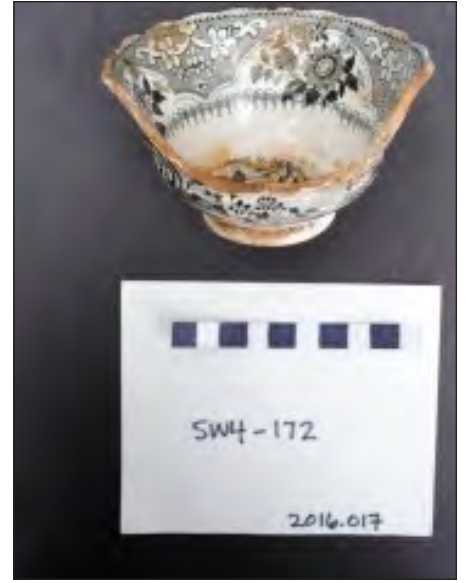
Last spring, a backhoe removing a tree stump from the side of the museum's driveway uncovered an enamel bed pan and a large pair of ice tongs. Fortunately, the contractor had the wherewithal to stop and inform staff of the findings. It appeared that the workers had stumbled upon a very large "midden" which is the archaeological term for garbage dump or trash deposit.

The society was able to obtain a small quick grant from CT Humanities (one of the last ones available before state funding was cut) to offer a series of public, hands-on programs on the archaeological dig. For six weeks over the summer the public was invited to become an "archaeologist" for the day. Visitors got to try their hand at excavating, screening,



washing, identifying, cataloging and photographing the objects uncovered. The midden was located on the site of the museum's former barn and items uncovered ranged from mid-Nineteenth Century pottery to a 1950s Connecticut license plate. The program was extremely popular and attracted participants of all ages from across the state. Our archaeologist, Bonnie Plourde, of Southington, was an extremely enthusiastic leader and worked well with the historical society team and our amateur "Indiana Jones."

The dig raised as many questions as it answered. According to historic photographs the midden was located on the site of the original Arnold House barn



which was built in the early 1800s. It is not exactly clear when the barn came down but it appears it was sometime in the 1950s. Had the Arnold Family been disposing of their garbage in the basement of the barn for generations? A number of items, including three 1930-era stoves, were uncovered possibly dating from the period the house was used as a tea room. Artifacts numbered in the thousands and included many intact bottles and pottery shards which will be on display at the antiques show. One of the more interesting finds were broken pieces of a marble table top which volunteers are trying to piece back together like a jigsaw puzzle. You can try it yourself at the show!

For more information about the Thankful Arnold House Museum and Haddam Historical Society, 860-345-2400 or www.haddamhistory.org.



Rare Riddle ABC Plate. Why is this poor little rabbit so terribly frighten? Size: 5" D. English.

Unusual small agate cat Staffordshire. Size: 4 1/2" H. English c. 1850



508-420-1433



Rare painted sweetfish bill with carved fish handle. American Earthenware, Slip. Size: 4 1/2" L.



Small VB rabbit / hare. Size: 2" H x 2 1/2" L. c. 1900.

Small VB rabbit / hare. Size: 2 3/4" H x 2" L. c. 1900.



Leatherwood Antiques
www.leatherwoodantiques.com

"What Next" ABC plate Souvenir of Catskill Mountain, NY depicting the Wright Brothers plane and a native American on a horse. Size: 6 1/4" D. Harker Pottery Company (1890 to 1920)

Special Show Section

CONNECTICUT SPRING ANTIQUES SHOW

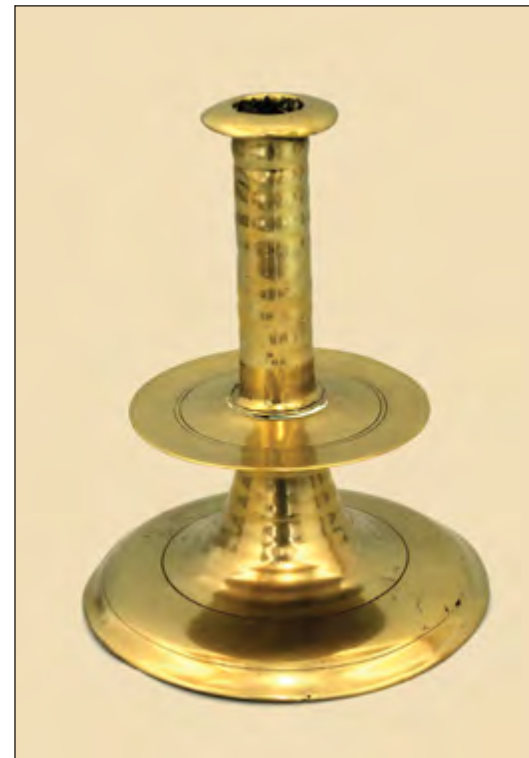


THE HANEBERGS ANTIQUES, East Lyme, Conn. — American Yacht *Fleur de Lis* by Antonio DeSimone dated 1908.

DANIEL AND KAREN OLSON, Newburgh, N.Y. — Eighteenth Century New York City bowback Windsor armchair in old black paint, height 37 inches, seat height 17¾ inches.



JANE F. WARGO, Wallingford, Conn.



MARK & MARJORIE ALLEN ANTIQUES, Gilford, N.H. — A large mid-Seventeenth Century Charles II sausage-turned brass trumpet candlestick.



DBR ANTIQUES, Hadley, Mass. — Tea shop trade sign, pine, polychrome decorated, 17½ inches long.

PETER H. EATON AMERICAN FURNITURE



A TERRIFIC SHOE-FOOT HUTCH TABLE in as found, as descended condition. The 54" x 39" four board pine top with full length cleats has as fine a surface as one could want—worn soft, and with shrinkage cracks which give it a great presence. Original red paint on the base and underside of top. Pine throughout, with oak shoe feet, and constructed with 't-head' nails. Ht. 26 ¾". This is the only hutch table in this form with these proportions that I have seen. Probably NH, last quarter of the 18th century.



CONNECTICUT SPRING ANTIQUES SHOW

Special Show Section



John H. Rogers
ANTIQUES
CAFS, LLC

P. O. Box 234, Elkins, New Hampshire 03233
603-526-6778

DAVID & DONNA KMETZ
AMERICAN PAINTINGS

www.donnakmetz.com

Phone: 508-476-2214 Email: donnakmetz@charter.net



Frank Alfred Bicknell (1866 - 1943)
A Grey Day in May
oil on panel, 12" x 16" signed lower right



GARVEY RITA ART & ANTIQUES, West Hartford, Conn. — Milton Avery (1885-1965) "Gray Sea," 1963, color lithograph edition #49/118, 21½ by 26¼ inches.



STEPHEN-DOUGLAS ANTIQUES, Rockingham, Vt. — Eighteenth Century pine two-drawer desk in original red paint with attached iron toggle arm candleholder, shown in *The Pine Furniture Book of Early New England*, Kettel, page 110, 1929, from the collection of Oliver E. Williams, Rockport, Mass., then in 1966 to Lillian Cogan.

CONNECTICUT SPRING ANTIQUES SHOW
March 25-26, 2017



RANDI ONA — EARLY AMERICAN ANTIQUES, Wayne, N.J. — Portraits attributed to Robert SeEVERS.



SCOTT BASSOFF / SANDY JACOBS ANTIQUES, Swampscott, Mass. — Beautiful needlework picture done in fine stitch on black background. Wrought by Janet Bevenridge.

ARBORFIELD

Jan Leone 314.566.1887

Tony Leone 314.566.1888



AMERICANA ANTIQUES

Early Lighting, Textiles, Braided & Hook Rugs, Redware, Yellow Ware, Paintings, Original & Painted Furniture, Samplers, Smalls, Folk Art, Treen Ware & Weathervanes.
arborfieldamericanaantiques@gmail.com • 6061 Arborfield Court, Saint Louis, Missouri 63129
Bridging The Past With The Future

Jewett - Berdan



I 24

THE MAKER of this rack showed all his tricks. Mr. John M. Woolsey, the owner, says that both this piece and the preceding one are from New England.

Recently rediscovered important 18th century spoon rack pictured in Kettell's Book, *The Pine Furniture of Early New England*, plate I, 24.

Thomas J. Jewett



15 Hopkins Hill Road
Newcastle, Maine 04553

(207) 563-3682

www.jewettandberdan.com

jewett-berdan@roadrunner.com



Charles P. Berdan

CONNECTICUT SPRING ANTIQUES SHOW

Special Show Section



THE HANEBERGS ANTIQUES, East Lyme, Conn. — Black Hawk weathervane with great surface.
CHARLES & BARBARA ADAMS, South Yarmouth, Mass.

BETTE & MELVYN WOLF, INC., Flint, Mich. — Fine Henry Hopper 5-inch chamberstick, New York City, circa 1850.



SAMUEL HERRUP ANTIQUES, Sheffield, Mass. — Good early English pancake onion bottle, 5½ inches tall, with encrustation found in the James River, Jamestown, Va., circa 1680.

MARK & MARJORIE ALLEN ANTIQUES, Gilford, N.H. — A mid-Eighteenth Century English six-arm chandelier with superb detail.

JEWETT-BERDAN ANTIQUES, Newcastle, Maine — A Hartford, Conn., Seymour 3-gallon crock.



JEFFREY TILLOU ANTIQUES



HAMBURG ROOSTER WEATHERVANE

Probably Harris & Company, Boston, Massachusetts. Ca. 1880-1900. Full-body copper, copper sphere. Classic example of a Hamburg rooster having a full-chest perched on a sphere. Wonderful condition. Original oxidized gilt surface with traces of sizing. 42”h 25”w x 8 1/2”d (on stand).

39 West St. “On the Green” in Litchfield, CT 860-567-9693 tillouantiques.com

Roberto Freitas

American Antiques & Decorative Arts

CHIPPENDALE BLOCK-FRONT MAHOGANY CHEST OF DRAWERS

Marblehead, Massachusetts, circa 1750

Top W: 37 ¾” x D: 22” x H: 34 ¼”
Case W: 34” x D: 19 ¼”



156 Water Street • Stonington, CT 06378
Call/Text: 860-535-1797 • info@robertofreitas.com

WWW.ROBERTOFREITAS.COM

Special Show Section

CONNECTICUT SPRING ANTIQUES SHOW



PETER H. EATON, Newbury, Mass. — A rare survivor from the first quarter of the Eighteenth Century, with deep sheath or shadow moldings on both front and sides and with notched front corners. Made of hard pine and retaining its original dry red paint. The top shows evidence of several sets of hinges, the cleats are missing and there is some loss to the rear feet. Despite these losses, the chest has a great feel and sense of age. Probably South Shore, Massachusetts, circa 1710-15. It measures: 46½ inches case length, 49¾-inch top and 23½ inches tall.



HANES & RUSKIN, Old Lyme, Conn. — French papier mache milliner's head, circa 1860.

NATHAN LIVERANT AND SON LLC ANTIQUES



Queen Anne cherry flat top highboy with architectural elements.
Housatonic Valley, Connecticut, 1750-1780.
Height 75", Width 39", Depth 21".



168 SOUTH MAIN STREET
P.O. BOX 103, COLCHESTER, CT 06415
(860) 537-2409 • FAX (860) 537-0577



mail@liverantantiques.com • www.liverantantiques.com

STEPHEN DOUGLAS

Offering 17th, 18th and 19th century American Antiques



Delightful early 19th century American oil on canvas portrait of a young girl in a pink dress with her dog. Period frame.

Call 802-463-4296 For An Appointment
Rockingham, Vermont
Walpole, New Hampshire

CONNECTICUT SPRING ANTIQUES SHOW

Special Show Section

BOSTON CANVASWORK DATED 1758



860-434-1800



HanesAndRuskin.com



DBR ANTIQUES, Hadley, Mass. — Forged iron, Eighteenth Century, heart-shaped base, early black paint, 9 inches high.



PETER H. EATON, Newbury, Mass. — A rare country Queen Anne side chair from eastern Connecticut, circa 1750-60 with an elongated heart-shaped splat, slip seat and beautifully shaped skirt over cabriole legs ending in pad feet. The back legs are fully chamfered. Cherry, with original slip seat frame and in a fine old surface, measuring 41 inches high, 18-inch seat height. One knee return is an older replacement. Purchased privately from an old New England collection.



LEATHERWOOD ANTIQUES, Sandwich, Mass. — Amusing carnival figures with star and moon, acting as a bean bag and ring toss, American, midcentury, measuring 30 by 22 inches. More photos at www.leatherwoodantiques.com under Toys, Games & Ephemera.



CONNECTICUT SPRING ANTIQUES SHOW
 March 25-26, 2017
 The Hartford Armory
 360 Broad Street, Hartford, CT

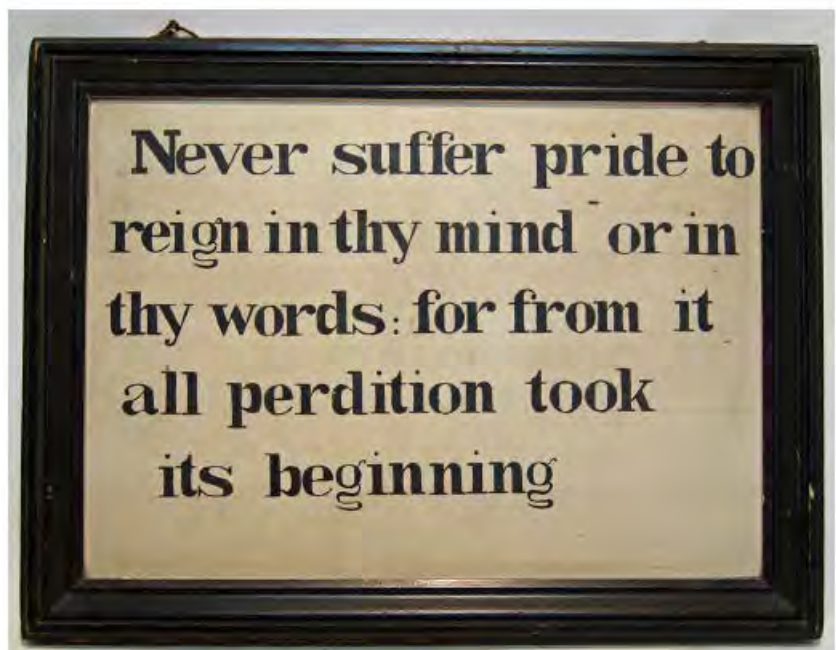
Scott Bassoff
Sandy Jacobs
 ANTIQUES



Large carved wooden lion. 23" long
 English origin, 19th century



Swampscott, MA 01907 | cell 603.801.5532 | www.sandyjacobsantiques.com
sandyjnh1@gmail.com | www.scottbassoffsandyjacobsantiques.com



An important graphic motto sign painted on a pine board circa 1830. All original from Essex Junction, VT. Sign measures 29 1/2" x 22"

Axtell Antiques
www.therookerybookery.com



Special Show Section

CONNECTICUT SPRING ANTIQUES SHOW



BETTE & MELVYN WOLF, INC, Flint, Mich. — Rare Eighteenth Century 5¼-inch flower handle porringer by Gershom Jones, Providence, R.I., 1774-1809.



WHITMAN ANTIQUES, Ambler, Penn. — Exceptional pair of American diamond and flamed brass andirons, New York, circa 1765.





CHARLES & BARBARA ADAMS, South Yarmouth, Mass. — Pair of Bennington candlesticks, some flint enamel, 9½ inches tall, excellent condition, as seen in Barret's book *Bennington Pottery and Porcelain*, page 135, plate 198.



RANDI ONA – EARLY AMERICAN ANTIQUES, Wayne, N.J. — Oil on wood panel, circa 1840.





THE COOLEY GALLERY
Fine American Art



Charles Harold Davis (1856-1933), *Early May*, o/c, 25" x 30"


The Best of Connecticut

Including a selection of fine J. Alden Weir etchings



25 Lyme Street, Old Lyme, CT 860.434.8807
www.cooleygallery.com

Garvey Rita
Art & Antiques



Katherine Hepburn (1907-2003)
Self Portrait
Graphite on paper, 10 x 8 inches

322 Park Road, West Hartford, CT 06119
www.garveyrita.com

CONNECTICUT SPRING ANTIQUES SHOW

Special Show Section



WHITMAN ANTIQUES, Ambler, Penn. — A pair of Gothic Nuremberg brass pricket candlesticks, circa 1500.



ARBORFIELD AMERICANA ANTIQUES LLC, St Louis, Mo. — Colorful shag prodded clip rug, geometric design, last quarter Nineteenth Century; a folk painting on wood of man grinding, circa 1800; a root head goose; canvas goose decoy; five tin plovers; a redware and wood candle mold; and a cheese rack.



PETER H. EATON, Newbury, Mass. — A very fine turned Carver chair with bold finials, turned back posts, slanted arms, ball tops to front legs intact, as are the turned front feed. An exceptionally fine example of a central/coastal Connecticut chair from the first quarter of the Eighteenth Century. Maple and ash, in good old color with an old splint seat. About 2 inches of the rear feet have been rebuilt to compensate for insect damage. It is 45½ inches tall with 15½-inch seat height.



CONNECTICUT SPRING ANTIQUES SHOW
March 25-26, 2017
The Hartford Armory
360 Broad Street, Hartford, CT

DANIEL AND KAREN OLSON, Newburgh, N.Y. — A 3-gallon J&E Norton crock with large whimsical floral decoration.

MARK & MARJORIE ALLEN

Furniture & Accessories of the 17th, 18th & early 19th centuries



A Bristol delft blue dash charger depicting William III on a rearing horse.

32 Artisan Court, Ste 3, Gilford, NH 03249

603-644-8989

www.antiquedelft.com

e-mail: mandmallen@antiquedelft.com

Randi Ona Early American Antiques

www.onaantiques.com

onaantiques@optonline.net 973-495-3707



Special Show Section

CONNECTICUT SPRING ANTIQUES SHOW

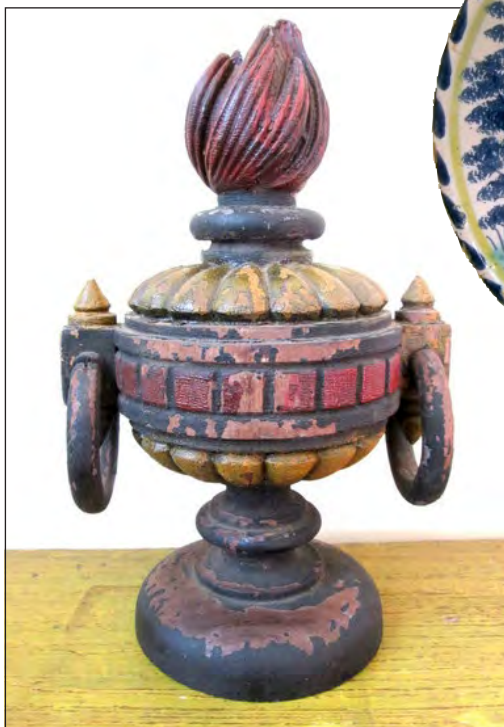


JEWETT-BERDAN ANTIQUES, Newcastle, Maine — Grain-painted two-drawer lift top blanket chest in untouched condition, circa 1835.

JOHN ROGERS, New London, N.H.



JEFFREY TILLOU ANTIQUES, Litchfield, Conn. — A rare Queen Anne ladder back carved knuckle armchair, probably coastal Massachusetts, circa 1750-65, maple, ash, birch arms in excellent condition. It retains its early Nineteenth Century red wash and varnish finish, seat re-rushed. Rare and possibly unique rush seat armchair with turned stiles and slat back flanked by serpentine arms with incising and carved knuckles. Possibly inspired by a Philadelphia carved knuckle armchair the maker had access to. The chair measures 44½ inches high (finial) by 16¾ (seat) by 26½ inches wide (knuckles) by 22 inches deep.



MARK & MARJORIE ALLEN ANTIQUES, Gilford, N.H. — A Bristol delft blue dash charger depicting Queen Anne.



DBR ANTIQUES, Hadley, Mass. — Maple, late Nineteenth Century, likely a carnival wagon ornament, 12½ inches high.



COLETTE DONOVAN ANTIQUES, Merrimacport, Mass. — Curvaceous Windsor continuous armchair having distinctive, flat knuckles in original black paint, circa 1770, possibly Connecticut.

Lewis W. Scranton ANTIQUES



38 Fire Tower Road, Killingworth, CT 06419 • (860) 663-1060



A charming Windsor high chair - no restoration.



A pair of American tin sconces - no restoration.



A Norwalk, CT slipware plate - "Mary's Dish," a few slip chips.

A coastal CT heart and crown banister back chair in old black paint. Seat needs some help.



CONNECTICUT SPRING ANTIQUES SHOW

Special Show Section



ROBERTO FREITAS AMERICAN ANTIQUES, Stonington, Conn. — Gilt copper and cast zinc "Index Horse" weathervane, J. Howard & Co, Bridgewater, Mass., circa 1860, measuring 19 inches tall by 25 inches wide.

GARVEY RITA ART & ANTIQUES, West Hartford, Conn. — James Goodwin McManus (1882-1958), "Along the Farmington River," 1915, oil on canvas, 24 by 32 inches.



AXTELL ANTIQUES, Deposit, N.Y. — Miniature three-tube birthday or Christmas candle mold, circa 1820. Tubes are 3½ inches long.



JEWETT-BERDAN ANTIQUES, Newcastle, Maine — Hard-to-find map of Boston, A Plan of Boston by Osgood Carleton, circa 1796, no. 35.

PETER H. EATON, Newbury, Mass. — A great country Queen Anne armchair in old dark red paint over original red. Unusual, beautifully turned arms, broad, shaped splat, full height (48 inches). From Southwestern Connecticut, circa 1745-70. When sold in 2008, it had the attached note: "Great chair purchased by Mrs Deming from Merrill Carr, Sumers, CT, 1947, pd \$26.00." Just repurchased from the collectors to whom I had sold it to in 2008.



Colette Donovan

Early American Country Antiques with Textiles
978-346-0614

DBRantiques.com
AMERICANA - FOLK ART
Est. 1972

Doug Ramsay
Hadley, MA 01035
413-687-9717

Special Show Section

CONNECTICUT SPRING ANTIQUES SHOW



PORT 'N STARBOARD GALLERY, Falmouth, Maine — Cast iron spread wing eagle mounted on decorated pedestal adorned with American shield in original polychrome paint, circa 1900, 12 inches high, 15½ inches wide.



ARBORFIELD AMERICANA ANTIQUES LLC, St Louis, Mo. — All-original oval portrait of a gentleman, canvas on wood, circa 1810-20.



WHITMAN ANTIQUES, Ambler, Penn. — Unusual pair of English brass Queen Anne candlesticks, shaped base with shell on each corner, circa 1765.



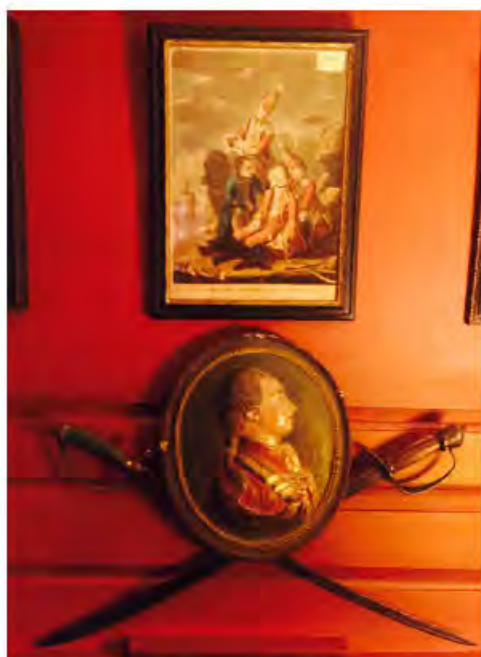
VILLAGE BRAIDER, Plymouth, Mass. — Early Twentieth Century oil on canvas "The Salt Marsh" by James Ross with a Yonkers Art Association Exhibition label, 16 by 20 inches.



DANIEL AND KAREN OLSON, Newburgh, N.Y. — Eighteenth Century New England oval top table, splayed, stretcher base, maple with cherry top, 26 inches tall; top is 34 by 26 inches.



Hollis E. Brodrick
Arts & Artifacts of Early New England



A fine selection of Colonial period decorative arts and artifacts of early America.
Come see what other historical treasures we'll have!

By appointment at 171 Washington Street, Portsmouth, NH • Mailing Address: PO Box 30, Portsmouth, NH 03802
Phone: 603.828.6158 • E-mail: hollisantiques@gmail.com

Also see me at the Danielson, Ct Antique Show - April 1st, the Tolland, Ct Antique Show - April 23,
and the 60th Annual New Hampshire Antique Show, Manchester, NH - August 10-12

CONNECTICUT SPRING ANTIQUES SHOW

Special Show Section



THE HANEBERGS ANTIQUES, East Lyme, Conn. — Sterling candlesticks, 10 inches tall, by William Cafe.



PORT 'N STARBOARD GALLERY, Falmouth, Maine — "Bathing Beauty," advertising chromolithograph (titled "Tie To Packard Cable"), 22 by 15 inches, unsigned, circa late Nineteenth Century.



STEPHEN-DOUGLAS ANTIQUES, Rockingham, Vt. — Folky oil on canvas of whaling scene of the British ship HMS *Resolute*, specially outfitted for Arctic exploration, signed P. Stuart, Dundee, second half of the Nineteenth Century.



SAMUEL HERRUP ANTIQUES, Sheffield, Mass. — Decorated red tin tray, Pennsylvania, attributed to the Harvey Filley & Sons tin shop, circa 1820-50.



STILES HOUSE ANTIQUES, Woodbury, Conn. — New England child's blanket box in original salmon paint.

Kirtland H.
Crump
LLC
ANTIQUÉ CLOCKS



Mahogany pillar & scroll clock made by Silas Hoadley
Plymouth, Connecticut, circa 1825.

Clock Sales, Restoration and Repair • Appraisals
1225 Whirlwind Hill Road Wallingford, CT 06492 • 203-245-7573
www.kirtlandcrumpclocks.com • email: kirtland@sbcglobal.net



*Mad River
Antiques, LLC*



A two gallon stoneware jar marked Bennington Factory, made at the Norton Pottery in VT before 1823. Also, an unmarked one gallon jug with a similar floral decoration, attributed to the Bennington Factory.

Steve and Lorraine German
North Granby, CT 06060

Phone: (860) 653-5733
E-mail: madriverrantiques@aol.com
Web: www.madriverrantiques.com

Special Show Section

CONNECTICUT SPRING ANTIQUES SHOW



NATHAN LIVERANT AND SON ANTIQUES, Colchester, Conn. — William and Mary banister back armchair featuring a scrolled crest, straight molded banisters, scrolled arms and bulbous turned rear stiles with prominent turned finials. Coastal Connecticut, likely Stratford or Milford area, 1720–1745.

VILLAGE BRAIDER, Plymouth, Mass. — Nineteenth Century oil on canvas of a street scene depicting buildings, each flying their own national flag, 10½ by 12½ inches.



SCOTT BASSOFF / SANDY JACOBS ANTIQUES, Swampscott, Mass. — A painter's sign oil on canvas.

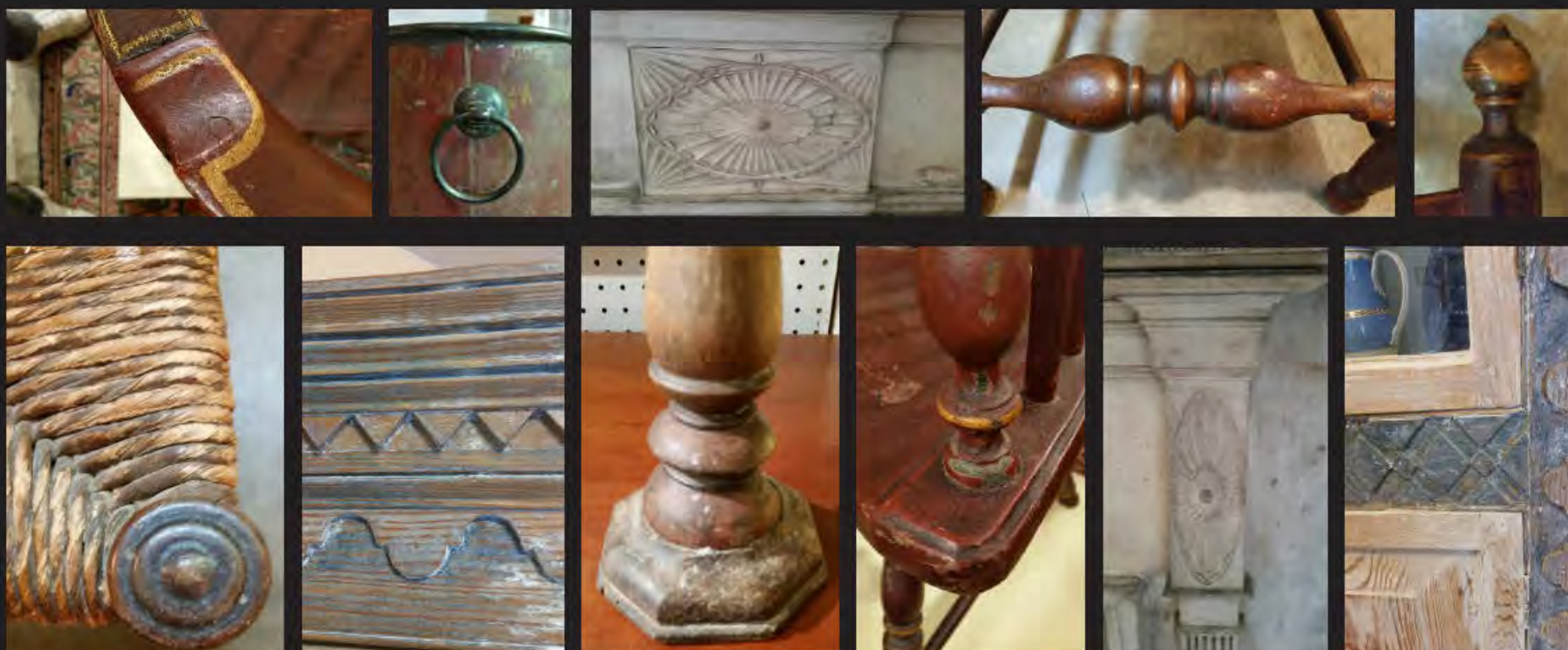
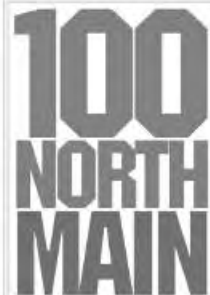
COLETTE DONOVAN ANTIQUES, Merrimacport, Mass. — Eighteenth Century American double candleholder, ash and pine.



BETTE & MELVYN WOLF, INC, Flint, Mich. — A 4½-inch American gimbal (double swing) lamp in fine condition, circa 1850–60.



"I'm ready for my closeup..."



Firehouse Antiques & 100 North Main Antiques
 100 & 102 North Main Street, Galena, Maryland 21635
 Open Tues. thru Sun. 10 am to 5 pm • 410.648.5639

EXHIBITS Connecticut Spring Antiques Show, Hartford, CT * March 25-26
 NY Garden & Antique Fair, Botanical Garden, NY * May 4-7
 Spring Antique Show, Rhinebeck, NY * May 27-28
 East Hampton Antiques Show, July 21, 22, 23

CONNECTICUT SPRING ANTIQUES SHOW

Special Show Section



RANDI ONA - EARLY AMERICAN ANTIQUES, Wayne, N.J. — Blanket box in blue, with shoe feet.



AXTELL ANTIQUES, Deposit, N.Y. — An Eighteenth Century maple turned wood plate, 7¼-inch diameter.



NATHAN LIVERANT AND SON ANTIQUES, Colchester, Conn. — Classical schoolgirl allegorical landscape featuring a woman in a yellow dress sitting by a harbor and welcoming a dove carrying an olive branch, American, 1805–1830, watercolor on paper in a molded and gilt frame.



MAD RIVER ANTIQUES, LLC, North Granby, Conn. — A mid-Nineteenth Century sandpaper painting based on an 1847 lithograph of the naval bombardment of Vera Cruz, Mexico.



ROBERTO FREITAS AMERICAN ANTIQUES, Stonington, Conn. — Harbor scene by Jane Peterson (1876–1965), oil on board, signed lower right, 16 by 12 inches.

Charles and Barbara Adams

289 Old Main Street, South Yarmouth, MA 02664
 Home (508) 760-3290 • Cell (508) 364-6119
 or (508) 633-6119
 E-mail: adams2430@gmail.com



Early Maritime Diorama which depicts the three masted ship "Bell" with a tugboat off her stern. 25 x 18, excellent condition.

Shows and By Appointment

Bennington Pottery Our Specialty



Carved Gilded Spread Wing Eagle
 Perched on branch in original gold leaf.
 Signed on back Jos. S___?___ 1880.
 22½" High, 31½" Wide.

PORT 'N STARBOARD GALLERY
 Marine Antiques • Paintings • Folk Art

53 Falmouth Rd., Falmouth, ME 04105
 Tel 207-781-4214
 E-mail: mleslie@maine.rr.com
 www.portnstarboardgallery.com

Special Show Section

CONNECTICUT SPRING ANTIQUES SHOW



BLUE HERON, Cohasset, Mass. — Nineteenth Century single-board flame birch drop leaf table.



JEWETT-BERDAN ANTIQUES, Newcastle, Maine — Detail of an untouched folk portrait on panel of young girl by Zedekiah Belknap, circa 1825.



LEATHERWOOD ANTIQUES, Sandwich, Mass. — Colorful and graphic double-sided gameboard printed on tin, American, midcentury, measuring 24 by 24 inches. More photos at www.leatherwoodantiques.com under Toys, Games & Ephemera.



GARVEY RITA ART & ANTIQUES, West Hartford, Conn. — Howard Rackliffe (1917-1987) "Porcupine Island," mixed media on board, 22 by 28 inches.



ARBORFIELD AMERICANA ANTIQUES LLC, St Louis, Mo. — Magnificent winter, summer New Jersey coverlet by Young, circa 1838, navy and white, floral and pineapple center, fringe bottom edge.

AMERICAN BARK/PALERMO



Fine large watercolor of the Bark Abeona in Palermo Harbor dated 1852 showing two views of the same boat. Inscribed at the bottom, "Bark Abeona Augusta Capt J. S. Arey Entering Palermo 1852." Very good condition; probably original walnut veneered frame. 22½" x 28".

SAMUEL HERRUP ANTIQUES

116 Main Street, P.O. Box 248, Sheffield, MA 01257

(413)229-0424 c: (413)822-1471 • E-mail: herrup@verizon.net • Web: www.samuelherrup.com

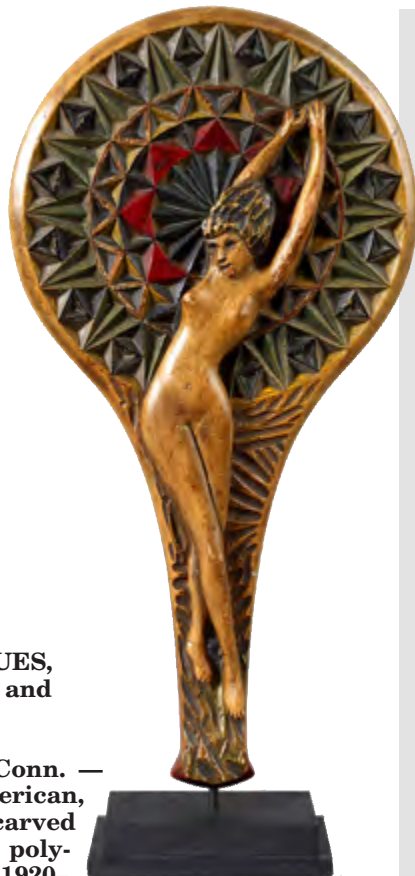


CONNECTICUT SPRING ANTIQUES SHOW

Special Show Section



SCOTT BASSOFF / SANDY JACOBS ANTIQUES, Swampscott, Mass. — Edwardian multistone and pearl brooch set with numerous diamonds.



JEFFREY TILLOU ANTIQUES, Litchfield, Conn. — Rare Art Deco chip carved hand mirror, American, most likely New England or New York State, carved maple (wood analysis), carved nude figure, polychrome painted, exceptional example, circa 1920-30. Purchased privately.



Jeff Bridgman Talks About Fun Of Collecting Early Political Textiles

On Sunday, March 26, at 2 pm, leading American flag dealer Jeff Bridgman of Jeff R. Bridgman Antiques, Inc will discuss why collecting early political textiles is so exciting and so interesting. Curiously, it was considered in poor taste to campaign for the office of president of the United States before 1840. The first known candidate using flags and bandanas to run for US President was William Henry Harrison.

Until the end of the Nineteenth Century, it was completely customary for

candidates to insert their face or slogan on the American flag. By the turn of the century, however, the public opinion was shifting towards regarding the "Stars and Stripes" as a sacred object, and in 1905, Congress decreed that it was illegal to use a portrait or slogan on an official symbol of the United States.

Attendees are welcome to bring an item from their own collection for evaluation, and, if they wish, Jeff will include the object in the lecture.



5'4 x 9'6 Afshar circa 1890



Ralph & Karen DiSaia
ORIENTAL RUGS

23 Lyme St., Old Lyme, CT 06371
orientalrugs@snet.net • 860-908-0076

open by appointment

www.orientalrugsltd.com



CHARLES & BARBARA ADAMS, South Yarmouth, Mass. — A folk art piece of a farmer driving a team of oxen, made of cottonwood and signed on the back by Frank Britto. The piece measures 22 inches long and the farmer is 14 inches tall.



Aldro Thompson Hibbard (1886-1972),
"Winter Hillside," signed lower left. Oil, 15" x 18"

31 Nichols Road, Cohasset, MA 02025 * 781-383-3210
info@blueheronFA.com * www.blueheronFA.com

Special Show Section

CONNECTICUT SPRING ANTIQUES SHOW



COLETTE DONOVAN ANTIQUES, Merrimacport, Mass. — Pilgrim iron, drop pull door knocker with originality nail, England or New England.



MAD RIVER ANTIQUES, LLC, North Granby, Conn. — An early Nineteenth Century stoneware jar with incised floral decorations, attributed to the Crollius pottery of New York City.



SAMUEL HERRUP ANTIQUES, Sheffield, Mass. — Oil on canvas portrait of Charlotte L. Livingston (1847-1921) painted by John Carlin and dated 1850. It measures 12 by 10 inches; 13½ by 11¼ inches overall.



AXTELL ANTIQUES, Deposit, N.Y. — Eighteenth Century Mantua effigy handled oval ash burl bowl, 12 by 10¼ inches.

Whitman Antiques

Specialists in Antique Metalware 215.421.7779



Very Rare 18th Century German Silver Form Brass Epergne. Nuremberg. Circa 1730.



Highly Important Pair of Brass Silver Form Huguenot Wine Buckets. Circa 1710.

www.WhitmanAntiques.com



Large Maple Pipe Box with bold details, untouched, circa 1780
H: 22½
W: 6¼

Hilary & Paulette Nolan

Falmouth, MA

508-548-0127 • hpnolan@mac.com



CONNECTICUT SPRING ANTIQUES SHOW

Special Show Section



NATHAN LIVERANT AND SON ANTIQUES, Colchester, Conn. — A rare pair of Chippendale cherry ribbon back side chairs featuring through tenon seat rail construction and retaining the original leather upholstered seats and brass tack decoration. Attributed to the Chapin School, possibly Eliphalet Chapin (1741–1807) of Windsor, Conn., or Aaron Chapin (1753–1838) of Hartford, Conn. 1785–1810.



STEPHEN-DOUGLAS ANTIQUES, Rockingham, Vt. — Three oval wooden storage boxes, one with exceptional geometric carved decoration, Quebec, early Nineteenth Century.

JEFFREY TILLOU ANTIQUES, Litchfield, Conn. — A Twentieth Century locomotive weather-vane, sheet metal with iron strapping, in fine condition, retaining some traces of original red paint, 21 inches high by 24 inches wide; 28 inches with stand.



MAD RIVER ANTIQUES, LLC, North Granby, Conn. — A small paint-decorated dome top box, dating to the early to mid-Nineteenth Century.

Bette & Melvyn Wolf, inc.

1196 SHADY HILL COURT,
FLINT, MICHIGAN 48532

18th & 19th C Pewter & Accessories



18th c. Philadelphia Salt by Parks Boyd

Tel. 810-732-6595 • Fax: 810-732-1467
E-mail: b.m.wolf@att.net
www.wolfpewter.com

Village Braider Inc.
508-746-9625 Plymouth, Mass.



19th C. carved Granite Japanese Lantern,
6 1/2' tall.

Special Show Section

CONNECTICUT SPRING ANTIQUES SHOW



JEWETT-BERDAN ANTIQUES, Newcastle, Maine — Daniel Smith's powder horn, 1818, with profusely decorated details of ships, fish, animals and buildings, Sedgwick, Maine.



PORT 'N STARBOARD GALLERY, Falmouth, Maine — "Gloucester Harbor," oil on canvas, signed Camillo Adriani, American, early Twentieth Century, 28 by 33 inches.



ROBERTO FREITAS AMERICAN ANTIQUES, Stonington, Conn. — Federal inlaid mahogany sideboard, Massachusetts, circa 1800. The crossbanded rectangular top with projecting center section of a long drawer, two short drawers, flanked by bottle drawers and hinged doors, square tapering legs, 64¼ inches long by 22¼ inches deep by 39¼ inches high.

CONNECTICUT SPRING ANTIQUES SHOW
March 25-26, 2017

The Hartford Armory, 360 Broad Street, Hartford, CT

Daniel and Karen Olson

Dealing in authentic antiques for over 35 years
1445 Route 300, Newburgh, New York 12550

Home Phone: (845) 564-0572

Cell Phone: (914) 474-1736

E-mail: olsonantiques@earthlink.net



Elliott & Grace Snyder

413-528-3581 (T) • 413-441-4065 (C)

info@elliottandgracesnyder.com

www.elliottandgracesnyder.com



An extremely rare form of child's Windsor armchair, with stretcher-less base and cupid's bow crest. New England, late 18th c.
24¼" OH, 10½" SH.

Pictured in Wallace Nutting, *Furniture Treasury*, pl. 2513.



American pastel portrait of a young woman with bonnet in original gilt frame, c.1815, 32½" x 26¼" framed

CONNECTICUT SPRING ANTIQUES SHOW

Special Show Section

Jane F. Wargo



Pleasing country oil on canvas in gilt frame, circa 1920. Nice size: 9" wide by 15½" high. Signed FAH bottom left. Info on back.

Wallingford, CT (203) 265-0342



Stiles House Antiques

30 Hollow Road,
Woodbury, CT 06798
www.stileshouseantiques.com
(203) 405-6357



Circa 1800 Portsmouth, NH
Wingback in Ivory Damask.



LEATHERWOOD ANTIQUES, Sandwich, Mass. — Primitive mechanical toy with banjo playing moving his hand and playing two notes (music box), American, circa 1910, measuring 10 inches tall by 5½ inches deep. More photos at www.leatherwoodantiques.com under Folk Art & Painted Objects.

‘Hidden In The Midden’ Booth Chat With Archaeologist Bonnie Plourde

On Saturday, March 26, at 2 pm, archaeologist Bonnie Plourde will present a booth chat, “Hidden in the Midden,” which is about the recent excavation at the Thankful Arnold House Museum in Haddam, Conn., and share a number of the many artifacts recovered.

In the summer of 2016, Bonnie oversaw the excavation of an unknown kitchen midden on the museum’s property adjacent to the 1794 structure. The trash depository held thousands of artifacts dating from the Nineteenth to early Twentieth Century, including intact bottles from historic Hartford Breweries to shards of majolica.

Findings ranged from a yellowware bowl or chamber pot from the 1830s to a Paris rouge container from the 1930s. Participants in the project were educated on the methods and procedures of an archaeological dig and how an archaeology dig can deepen an understanding of the past.

Bonnie will share examples of the uncovered material culture (trash) of a middle-class Connecticut River Family and how these items help the community to gain a better understanding of who the previous residents were, the time period they lived in and the evolution of the museum and community.



Large American Carved Eagle with a great surface. Ca 1890.

The Haneberg’s Antiques

BOUGHT & SOLD

5 Boston Post Road, East Lyme, CT 06333 • Bob and Claudia Haneberg • By Appointment only
(860) 389-1908 • chaneberg@aol.com • Please look at our web site: www.HanebergsAntiques.com
Proudly exhibiting at MacDougall-Gionet Antiques on Rte. 1 in Wells, ME

Connecticut Spring Antiques Show

March 25 & 26, 2017

DEALER LISTING

Charles and Barbara Adams

289 Old Main Street
South Yarmouth, MA 02664
508-760-3290
adams2430@gmail.com

Mark and Marjorie Allen

32 Artisan Court
Gilford, NH 03249
603-644-8989
mandmallen@antiquedelft.com
www.antiquedelft.com

Arborfield Americana Antiques LLC

6061 Arborfield Court
St. Louis, MO 63129-4719
314-566-1887
arborfieldamericanaantiques@gmail.com

Artemis Gallery

Wallace Road
North Salem, NY 10560
914-669-5971
artemis@optonline.net
www.ArtemisAntiques.com

Axtell Antiques

1 River Street
Deposit, NY 13754
607-467-4444
rsaxtel@msn.com
www.axtellantiques.com

Scott Bassoff & Sandy Jacobs

99 Rockland Street
Swampscott, MA 01907
SandyJNR
www.sandyjacobsantiques.com

Blue Heron Fine Arts

31 Nichols Road
Cohasset, MA 02025
781-383-3210
Info@blueheronfa.com
www.blueheronfa.com

Jeff R. Bridgman American Antiques

14A Franklin Church Road
Dillsburg, PA 17019
717-502-1281
Info@jeffbridgman.com
www.jeffbridgman.com

Hollis Brodrick

PO Box 30
Portsmouth, NH 03802
603-828-6158

Martin Chasin Fine Arts LLC

1125 Church Hill Road
Fairfield, CT 06825
203-374-5987
m2015chasin@gmail.com
www.martinchasinfineartslc.com

John Chaski

11 N. Main Street
Camden, DE 19934
302-448-6492
John@johnchaski.com
www.johnchaski.com

The Cooley Gallery

25 Lyme Street
Old Lyme, CT 06371
978-465-1090
Info@cooleygallery.com
www.cooleygallery.com

Kirtland Crump

387 Boston Post Road
Madison, CT 06443
203-245-8753
kirtland@sbcglobal.net
www.crumpclocks.com

Colette Donovan

98 River Road
Merrimacport, MA 01860
978-346-0614
Colettedonovanantiques@comcast.net

Dover House Antiques

3700 Lexington Road
Louisville, KY 40207
502-899-1699
crsmith2002@aol.com

Peter H. Eaton Antiques Inc.

24 Parker Street
Newbury, MA 01951
978-465-2754
Peter@PeterEaton.com
www.PeterEaton.com

Emele's Antiques

443 Rt. 313
Dublin, PA 18917

Firehouse Antiques

PO Box 144
Galena, MD 21631
410-648-5639
Firehouse@friend.ly.net
www.galenaantiquesstrict.com

Roberto Freitas

156 Water Street
Stonington, CT 06378
860-535-1797
Info@robertofreitas.com
www.robertofreitas.com

Tucker Frey

289 Main Street South
Woodbury, CT 06798
203-263-5404
tfrey90549@aol.com

J Gallagher Antiques

PO Box 69
North Norwich, NY 08858
607-334-4020
Jamesrons2@yahoo.com

Garvey Rita Art and Antiques

322 Park Road
West Hartford, CT 06119
860-233-1730
Info@garveyrita.com
www.garveyrita.com

Matt Greig Antiques

326 Union Street
Milton, DE 19968
717-818-7262
mattgreig80@gmail.com

David Good Antiques

7887 State Rtd. 177
Camden, OH 45311
513-796-2693

Anne Hall Antique Prints

PO Box 423
Sturbridge, MA 01566
413-245-4197
oldprint@verizon.net
www.AnneHallAntiquePrints.com

The Hanebergs Antiques

5 Boston Post Road
East Lyme, CT 06333
860-437-1583
chaneberg@aol.com
www.hanebergsantiques.com

Hanes and Ruskin

PO Box 212
Old Lyme, CT 06371
860-434-1800
Info@hanesandrskln.com
www.hanesandrskln.com

Samuel Herrup

PO Box 248
Sheffield, MA 01257
413-229-0424
herrup@verizon.net
www.samuelherrup.com

Jewett and Berdan

15 Hopkins Hill Road
Newcastle, ME 04503
207-563-3682
Jewett-berdan@roadrunner.com
www.jewettberdan.com

Bill Kelly

936 Cape Road
Limington, ME 04049
207-838-2849
Bill.kelly419@yahoo.com

James Kilvington

PO Box 892
Dover, DE 19903
302-734-9124
jkliv@comcast.net

Donna Kmetz

1 Common Street
Douglas, MA 01516
508-476-2214
donna.kmetz@charter.net
www.donna.kmetz.com

Leatherwood Antiques

PO Box 1676
Sandwich, MA 02563
508-420-1433
Info@leatherwoodantiques.com
www.leatherwoodantiques.com

Nathan Liverant and Son Antiques

168 South Main Street
PO Box 103
Colchester, CT 06415
860-537-2409
mail@liverantantiques.com
www.liverantantiques.com

Mad River Antiques

13 Gloucester Lane
North Granby, CT 06060
860-653-5733
madriverrantiques@aol.com
www.madriverrantiques.com

Paulette and Hilary Nolan

PO Box 583
Falmouth, MA 02541
508-548-0127
hpnolan@mac.com

Daniel and Karen Olson

1445 Rt 300
Newburgh, NY 12550
845-564-0572
olsonantiques@earthlink.net
www.olsonantiques.com

Randi Ona

20 Osborne Terrace
Wayne, NJ 07470
973-495-3707
onaantiques@optonline.net
www.onaantiques.com

Oriental Rugs Ltd.

23 Lyme St.
Old Lyme, CT 06371
860-434-1167
orientalrugs@snet.net
www.orientalrugsLtd.com

Port N' Starboard Gallery

53 Falmouth Road
Falmouth, ME 04105
207-781-4214
mleslie@maine.rr.com
www.portnstarboardgallery.com

Derik Pulito Antiques

381 Percival Avenue
Kensington, CT 06037
860-828-0588
dcp023@comcast.net

Dennis Raleigh

PO Box 745
Wiscasset, ME 04578
207 805 4564
dgraleigh@myfairpoint.net
www.dennisraleighantiques.com

DBR Antiques-Doug Ramsay

101 Honey Pot Road
Hadley, MA 01035
dbrantiques@live.com
www.dbrantiques.com

John Rogers

31 Dixie Lane
New London, NH 03257
Jhwithrow@yahoo.com

Thomas Schwenke

50 Main St. North
Woodbury, CT 06798
203-266-0303
fedfurn@schwenke.com
www.schwenke.com

Lewis Scranton

38 Fire Tower Road
Killingworth, CT 06419
860-663-1060

Grace and Elliott Snyder

Box 598
S. Egremont, MA 01258
413-528-3581
zorvis@bcn.net
www.elliottandgracesnyder.com

Stephen-Douglas Antiques

PO Box 27
Rockingham, VT 05101
802-463-4296
doug.jackman1@me.com
www.stevenstillantiques.com

Stiles House Antiques

30 Hollow Road
Woodbury, CT 06798
203-405-6357
stileshouseantiques@gmail.com
www.stileshouseantiques.com

Steven Still

1717 South Colebrook Road
Manheim, PA 17545
717-459-3595
Steven@stevenstillantiques.com
www.stevenstillantiques.com

Thistlethwaite Americana

501 North Race Street
Glasgow, KY 42141
270-404-1558
taylor@thistleamericana.com
www.Thistleamericana.com

Jeffrey Tillou Antiques

39 West Street
Litchfield, CT 06759
860-567-9693
Jeffrey@Tillouantiques.com
www.tillouantiques.com

Village Braider

22 Fathom Road
Plymouth, MA 02360
508-746-9625
Bruce@villagebraider.com
www.villagebraider.com

Jane Wargo

3 Springbrook Drive
Wallingford, CT 06492
203-265-0342
jwfwargo@comcast.net
www.janefwargoantiques.com

Paul and Karen Wendhiser

PO Box 155
Ellington, CT 06029
860-872-9600
pkwendhiser@comcast.net
www.Wendhiserantiques.com

Whitman's Antiques

901 Quinard Court
Ambler, PA 19002
215-421-7779
Info@whitmansantiques.com
www.Whitmansantiques.com

Bette & Melvyn Wolf

1196 Shady Hill Court
Flint, MI 48532
810-252-2726
b.m.wolf@att.net
www.wolfpewter.com