

Greenwich WINTER ANTIQUES SHOW

SPECIAL SHOW SECTION

Antiques you desire.
Advice you admire.

Greenwich Winter Antiques Show *produced by Frank Gaglio, Inc.*

“Buy what you love...
trust what you buy.”

~ Jeff Cooley, Owner of The Cooley Gallery,
Fine American Art, Old Lyme, CT

Preview Party

Friday, December 2, 7:00 to 9:00 pm

Preview tickets visit:
greenwichhistory.org/antiquarius
or call 203.869.6899 Ext. 10

Antiques Show

Saturday, December 3, 10:00 am to 6:00 pm

Sunday, December 4, 11:00 am to 5:00 pm

Eastern Greenwich Civic Center
90 Harding Road, Old Greenwich, CT

Admission: \$15 per person
(Valid for entry during the entire 2-day show)

Gourmet Bistro by Franklin Street Works Café

*Complimentary decorator and
antiques magazines*

Free accessible parking

Frank Gaglio, Inc.

845.876.0616 Office

914.474.8552 Show Phone

www.barnstar.com




ANTIQUARIUS
MMXVI
to benefit the
Greenwich Historical Society

Antiques & Fine Art
MAGAZINE

The Magazine
ANTIQUES

incollect
INTERIORS + COLLECTIONS

FINE ART
CONNOISSEUR

Greenwich
WINTER ANTIQUES SHOW

Greenwich
Historical
Society

Continenti fabric by Alessandra Branca for Schumacher

SPECIAL SHOW SECTION

Greenwich

WINTER ANTIQUES SHOW



Trees and portrait



Festive holiday atmosphere

The Greenwich Winter Antiques Show — Opulent, Extraordinary, Elegant!

Welcome to our Greenwich Winter Antiques Show Special Section. This preview is designed as an inside and first-hand look at what will greet you at the show and highlight some of the special events we have in store this year.

First and foremost, I would like to thank the 41 exceptional exhibitors who have dedicated their time and talent to participate in this year's show which benefits the Greenwich Historical Society and its ongoing capital development programs which include an expansion of its historic facilities and educational programs.

The excitement begins on Friday evening, December 2, with a preview party from 7 to 9 pm affording patrons the first opportunity to shop the show and partake in the festivities which include heavily passed gourmet hors d'oeuvres catered by Marcia Selden Caterers of New York and three full open bars. (Reservations highly suggested)

On Saturday, December 3, the festivities continue with the show opening at 10 am and our exhibitors thrilled to welcome you.

Then, from 10 am until 3 pm, a special Appraisal Day by

Doyle Galleries of New York invites you to bring in your family heirlooms or attic treasures for a complimentary assessment of value conducted by their experts. Jewelry, fine art, Oriental rugs, porcelains, coins and books are all welcome and photos of furniture accepted as well. Appraisal appointments are required; call Kathy Brackenridge at 203-637-6209 or email doylelect@doyle.com.

After shopping our 41 exhibitor galleries, take a break in the show café where Franklin Street Works Café, will be serving up delicious lunch specialties and refreshing beverages. This is a not for profit organization and their dedication to service and fine food is unsurpassed. Once refreshed, head back to the show and have another look around.

On Sunday, the activities continue as the show opens at 11 am and many exhibitors have replenished their stands with fresh objects so another visit to the show is certainly warranted as your admission is good the entire weekend!

Then, at 1 pm, join us at the front of the stage in the gymnasium for a special presentation and book signing of

A Very Vintage Christmas: Holiday Collecting, Decorating and Celebrating, by author, designer and host of TV's *Flea Market Minute*, Bob Richter. Bob's recollections of childhood Christmases past and insightful knowledge of holiday décor will arouse the child in you as well, and hopefully, leave you with cherished memories remembered.

The show café will be open and the show will continue until 5 pm.

Though our doors will close for another year, the camaraderie and relations you have built with our exhibitors and show committee members will live on and flourish as your support for the Antiquarius umbrella of fundraising events is greatly appreciated and continues well beyond our coveted antiques show.

On behalf of the Greenwich Historical Society and I, have a spectacular Holiday Season and thank you for visiting and supporting our event.

Sincerely,

Frank Gaglio

Greenwich Antiques Show...Simply Heavenly



MARION HARRIS

CONTRADITIONAL ART AND ANTIQUES

1225 Park Avenue, New York, New York 10128
t 212.348.9688 e info@marion-harris.com w marion-harris.com

By Appointment

Greenwich WINTER ANTIQUES SHOW

SPECIAL SHOW SECTION



MARION HARRIS, New York City — Unusual mechanical toy with circus performers and twirling pig in the original paint, measuring 4 by 3½ inches, circa 1920, Austrian.



FROM HERE TO ANTIQUITY, New Haven, Conn. — Anna Minor (1864–1947), “St Mark’s Square, Venice,” circa 1915. It is in a Sanford White frame.



PORT ‘N STARBOARD GALLERY, Falmouth, Maine — “Catboat Pal Off Mason’s Island” (Mystic, Conn.), watercolor measuring 15 by 21 inches and signed Y.E. Soderberg (American, 1896–1971), circa 1930s.



LEATHERWOOD ANTIQUES, Sandwich, Mass. — Sweet long-eared toy dog inkwell, Austrian, circa 1900, 4½ inches high. For more photos, Leatherwoodantiques.com under Vienna Bronzes – Sculpture.

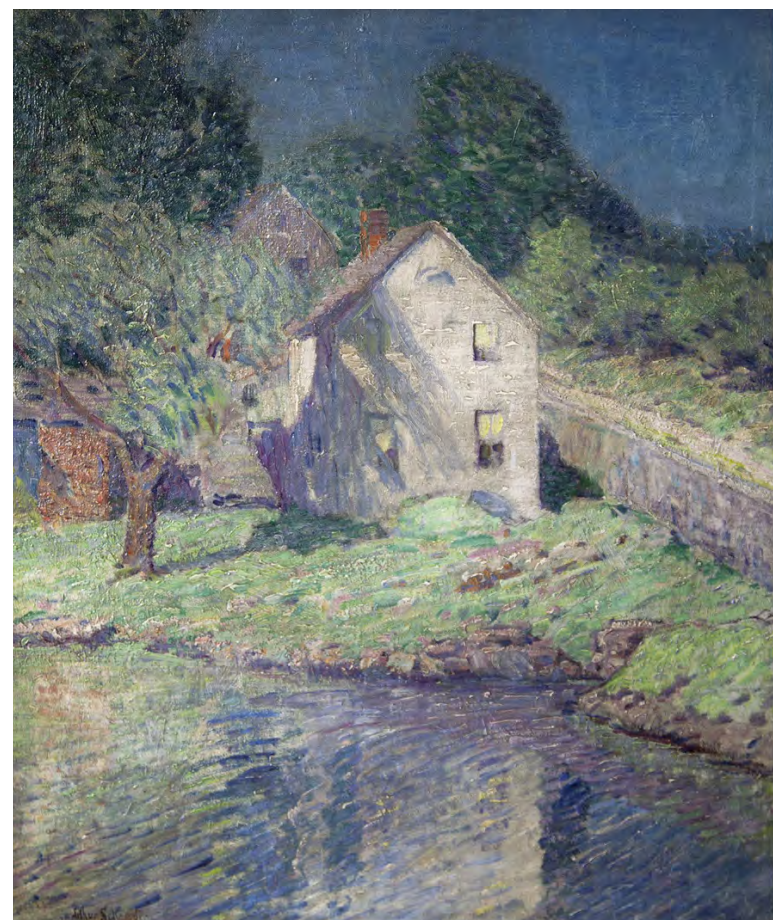


Dr. Robert John Thornton
 “The Pontic Rhododendron” from *The Temple of Flora...*
 Mixed method engravings, including aquatint, mezzotint, stipple and line engraving.
 Published, London, 1799-1807
 Dimensions: 22¾ x 17¼ inches

Arader Galleries

1308 Walnut Street, Philadelphia, PA 19107
 Phone: 215-735-8811, Fax: 215-735-9864
 Website: www.aradergalleries.com

FROM HERE TO ANTIQUITY
 FINE ART & ANTIQUES



Arthur Schneider (1866-1942)
 American Impressionist / Orientalist Painter & Illustrator
House by The Lake, ca. 1910
 Oil on canvas
 26 x 22 inches
 Signed lower left.
 \$7,800

David Smernoff of From Here To Antiquity | New Haven, CT
 (203) 430-6634 | davidsmernoff@gmail.com
<http://FromHereToAntiquity.org> | Over 800 items online starting from \$100 on up

SPECIAL SHOW SECTION

Greenwich WINTER ANTIQUES SHOW



ARADER GALLERIES, Philadelphia — John James Audubon, “American Black or Silver Fox, plate CXVI, from *The Viviparous Quadrupeds of North America*, published New York, 1845–48. It is hand colored lithographs measuring 20½ by 27½ inches.



GEORGIAN MANOR ANTIQUES, Fairhaven, Mass. — Fine Middle Eastern or Indian hardwood portable dowery trunk, profusely inlaid with Mother of Pearl, circa 1880, and measuring 14 inches high, 30 inches wide and 14½ inches deep.



Author Bob Richter, left, with Frank Gaglio, show manager.

“A Very Vintage Christmas” Book Signing

Make Sunday special by returning to the show for a special new book signing of *A Very Vintage Christmas: Holiday Collecting, Decorating and Celebrating*, by author, designer and host of TV’s *Flea Market Minute*, Bob Richter. Join Bob at the front of the stage area for complimentary hot cocoa, mulled cider and gourmet cookies, while he shares his experiences with Christmas ornamentation and holiday decorating. Bob will happily dedicate his book to whomever you choose, and it will make a wonderful holiday gift.

Georgian Manor Antiques

Fine English Furniture, Porcelain and Glass



Fine pair of English George III black painted and parcel-gilt decorated arm chairs, circa 1790, h 37” x w 23” x d 19”.

Enrique Goytizolo Established 1970

Member of the National Antique & Art Dealers Association of America, Inc.

P. O. Box 271, Fairhaven, Massachusetts 02719
 E-mail: inquiries@georgianmanorantiques.com
 Website: www.georgianmanorantiques.com
 Telephone: (508) 991-5675



“Nantucket Sailor Boy” Whirligig

Rare folk art stoneware sculpture with original distressed polychrome painted surface.

Circa early – mid 20th C.
 36” High (38½” with stand),
 22” Wide with rotating arms
 (missing easily replaceable wood paddles).

PORT ‘N STARBOARD GALLERY

Marine Antiques • Paintings • Folk Art

53 Falmouth Rd., Falmouth, ME 04105

Tel 207-781-4214

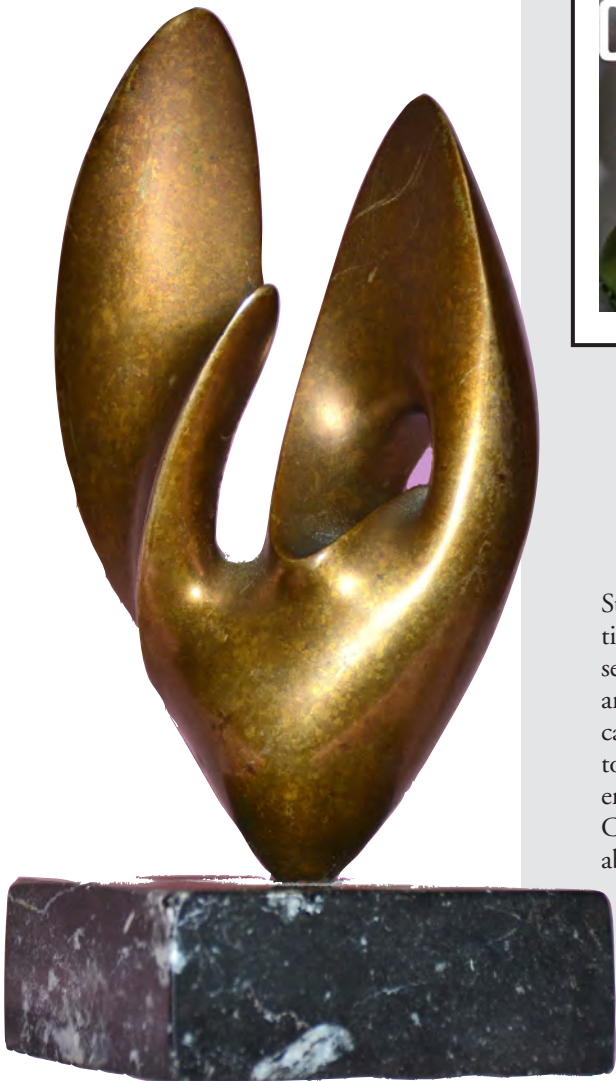
E-mail: mleslie@maine.rr.com

www.portnstarboardgallery.com

Greenwich WINTER ANTIQUES SHOW

SPECIAL SHOW SECTION

VILLAGE BRAIDER, Plymouth, Mass. — “Ubatuba,” bronze by Antoine Poncet, 17/100, circa 1979, 7 by 3 inches.



Enjoy The Show And Stay For Lunch!

This year we welcome a new café caterer, Franklin Street Works Café, serving delicious lunch specialties from gourmet sandwiches to soups, salads and a selection of refreshing beverages. Take a break from antiquing and bring a friend to our bistro where you can relax and chat about the purchases you are going to make! The café will be located on the left when entering the Civic Center and Franklin Street Works Café is a not for profit organization. To learn more about their mission, visit their location at 41 Franklin Street in Stamford, Conn. For information, gallery 203-595-5211 or café 203-595-5581.



LEATHERWOOD ANTIQUES, Sandwich, Mass. — Early bold-carved flower basket, circa 1820, measuring 14 inches high and 10 inches wide. For more photos, Leatherwoodantiques.com under Folk Art & Painted Objects.

J. Gallagher

Box 69, North Norwich, New York 13814



A selection of my Antique Fireplace Equipment

19th Century American Furniture • Period Fireplace Fixtures • Appropriate Accessories
Telephone (607) 334-4020 Fax (607) 336-7655 www.antiqueandirons.com



FROM HERE TO ANTIQUITY, New Haven, Conn. — “Fishing Boats in Gloucester,” 1926, Marian D. Harris.



MARION HARRIS, New York City — Celluloid bell in the form of an owl. Press beak to ring. Lovely detail, glass eyes, English, circa 1930.

SPECIAL SHOW SECTION

Greenwich

WINTER ANTIQUES SHOW



ARADER GALLERIES, Philadelphia — John James Audubon, "The Purple Heron, Plate CCLVI," from *Birds of America*, Published: London, 1827-38. Medium: Hand colored aquatint, etching and line engraving. It measures 37½ by 25⅜ inches.



DK FARNUM, Lakeville, Conn. — Van Cleef and Arpels "Tree of Life" earrings, circa 1945.

Doyle Appraisal Day

Pack up your family heirlooms, attic treasures, fine art, jewelry, Oriental rugs, silver, photos of furniture and join us for a complimentary appraisal day at the show on Saturday, December 3, from 10 am to 3 pm. Doyle experts will appraise your items and share market expectations of their value. Appointments are necessary; call Kathy Brackenridge at 203-637-6209 or email doylect@doyle.com.)



Greenwich
Winter Antiques Show
Saturday, Dec. 3, 10:00 am to 6:00 pm
Sunday, Dec. 4, 11:00 am to 5:00 pm

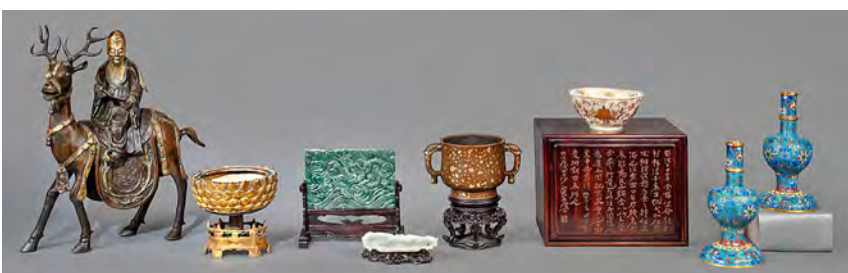
Leatherbound, Fine and Rare Books, Chinese Ceramics and Works of Art



The Novel, Austen, Jane
 Edinburgh: John Grant, 1911
 Leatherbound. Twelve volumes. Octavo. The Writings and Novels of Jane Austen. Winchester Edition. Illustrated to frontispiece. Bound in half red morocco between marbled boards, top edge gilt, raised bands, gilt panels to spine. Fine.



The Last Of The Valois
 Catherine, Lady Charlotte
 London: Richard Bentley and Sons, 1888
 Full leather. Two volumes. Thick octavo. The Last Of The Valois, And Accession Of Navarre, by Lady Charlotte Catherine. (Cosway-Style Binding).



A Collection Of Chinese Ceramics and Works of Art.
 18th /19th Century.

Imperial Fine Books and Oriental Art

790 Madison Avenue, New York, NY 10065
 212-861-6620
www.imperialfinebooks.com



THE COOLEY GALLERY

Fine American Art



John Henry Twachtman
 (1853 - 1902)
Connecticut Landscape
 unsigned, oil on panel, 14" x 24"

25 Lyme Street, Old Lyme, Connecticut ~ 860.434.8807

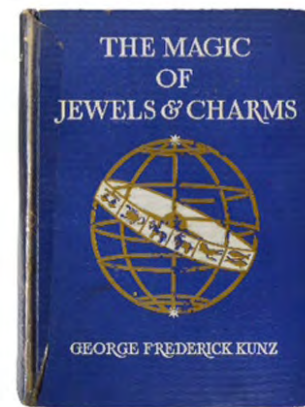
www.cooleygalleries.com

Greenwich WINTER ANTIQUES SHOW

SPECIAL SHOW SECTION



PORT 'N STARBOARD GALLERY, Falmouth, Maine — Carved mermaid on dolphin, unique folk art sculpture, signed R.J. Innis, 1973, South Dennis, Cape Cod, Mass. (American, 1893-1983), measuring 13 inches long, 7¼ inches high and 4¾ inches wide.



MARION HARRIS, New York City — Box of paste Cullinan "Diamonds," along with a rare 1906 copy of George Kunz book on *The Magic of Jewels & Charms*.

GEORGIAN MANOR ANTIQUES, Fairhaven, Mass. — Unusual Colonial-Indian neoclassical carved hardwood open bookcase by C. Lazarus & Co., cabinet maker — Calcutta, circa 1840. It measures 51 inches high, 37¾ inches wide and 18¼ inches deep.



GEORGIAN MANOR ANTIQUES, Fairhaven, Mass. — Refine Peruvian giltwood and composition circular mirror, circa 1900-10, measuring 26 inches in diameter.



VILLAGE BRAIDER, Plymouth, Mass. — Bronze of a curled woman initialed L.B.S., '74, measuring 7 inches high and 7 inches wide.



LEATHERWOOD ANTIQUES, Sandwich, Mass. — Rare mechanical clip/paper holder on wooden base with a superb model of a Vienna bronze dachshund, circa 1910, dog size is 3 inches high and 7 inches long, base size is 7¾ inches long and 4⅝ inches wide. For more photos, Leatherwoodantiques.com under Vienna Bronzes - Sculpture.



MOYLAN-SMELKINSON
THE SPARE ROOM
BOOTH 30



Georgian & Victorian Jewelry, 18th & 19th Century English ceramics in Japan Patterns, whimsical figural collectibles and decorative objects.

Box 4684 Baltimore, MD, 21212
Tel 410.435.3738 • Mobile 410.963.3195 • Fax 410.435.3744
spareroomantiques@att.net

www.spareroomantiques.com



dk farnum

estate jewelry
www.dkfarnum.com
917.841.8405

SPECIAL SHOW SECTION

Greenwich WINTER ANTIQUES SHOW

Village Braider Inc.
508-746-9625



Collage and oil on Masonite
by Dorothy Dodsworth,
32" x 48" c. 1960's



PORT 'N STARBOARD GALLERY, Falmouth, Maine — Carved gilded eagle plaque, polychrome (red, white and blue) American shield, dating from the mid-Twentieth Century and measuring 22 inches high by 21 inches wide.

MARION HARRIS, New York City — A pair of male and female Art Deco mannequins.



FROM HERE TO ANTIQUITY, New Haven, Conn. — "Bee Hives and Houses," 1886, Sucker & Wilhems Litho Co., New York, measuring 48 by 36 inches.

Leatherwood Antiques

Hand Puppets (Marionettes) with painted wooden heads and hands. French c. 1900

An apprentice three-tier stacked turned wood boxes with miniature Lords Prayer underneath top lid. English c. 1899. Size: 3" H S

"Spicy" mechanical postcard; pull the tab on top and legs move. Size: 5 1/2" H x 3 3/4" W

Peggy Plumpkin Proving her Men before Marriage or WHO WEARS YE BREECHES. This is a wonderful postcard which shows a glimpse into 18th Century battle-of-the-sexes & the creeping demands for women's stand. Paraphrased with humor. This is important to show the historical development of women's rights. English c. 1790. Size: 4 7/8" H x 3" D

Exquisite pair of cast iron THEATRE PERFORMANCE TIME INDICATORS. One will show the start time and one shows the performance end. English, Early 1900's Size: 15" H x 4" W

www.leatherwoodantiques.com

508-420-1433