

# THE ADA/HISTORIC DEERFIELD ANTIQUES SHOW

SPECIAL SHOW SECTION

## 2016 ADA HISTORIC DEERFIELD ANTIQUES SHOW COLUMBUS DAY WEEKEND OCTOBER 8<sup>TH</sup> & 9<sup>TH</sup> SATURDAY 11-6, SUNDAY 11-5 DEERFIELD ACADEMY, DEERFIELD, MA

### CONNECTICUT

Kirtland H. Crump, LLC  
Stephen & Carol Huber  
Nathan Liverant and Son, LLC  
Mad River Antiques, LLC  
Oriental Rugs Ltd.  
Derik Pulito  
Thomas Schwenke, Inc  
Lewis W. Scranton  
Jeffrey Tillou

### NEW HAMPSHIRE

Hollis Brodrick  
Russack & Loto Books, LLC  
Jonathan Trace

### DELAWARE

James M. Kilvington, Inc

### PENNSYLVANIA

Greg K. Kramer & Company

### KANSAS

American Spirit Antiques

### NEW JERSEY

A Bird in Hand  
SAJE Americana

### OHIO

David Good

### MASSACHUSETTS

Joan R. Brownstein  
Pam & Martha Boynton  
Paul J. DeCoste  
Colette Donovan  
Peter H. Eaton, Inc  
Samuel Herrup  
Scott Bassoff, Sandy Jacobs  
Gary Langenbach  
John Hunt Marshall  
Hilary & Paulette Nolan  
Elliott & Grace Snyder

### MAINE

Jewett-Berdan Antiques

### NEW YORK

Richard Axtell  
Bernard and S. Dean Levy  
Daniel & Karen Olson  
Don Olson

Steven S. Powers

John Keith Russell

Earle D. Vandekar of Knightsbridge

### VERMONT

Jordan Antiques & Antiquarian Books  
Jeff & Holly Noordsy  
Stephen-Douglas



Historic Deerfield

FOR MORE DETAILS

[WWW.ADADEALERS.COM](http://WWW.ADADEALERS.COM)



## THE ADA/HISTORIC DEERFIELD ANTIQUES SHOW

SPECIAL SHOW SECTION

Historic Deerfield Decorative Arts Forum Nov. 11–13  
'Tastemakers & Trendsetters, Early New England'

*"It is a great number of years that I have been fixed in the belief that our Countrymen have in them a more ungovernable passion for Luxury than any People upon earth. The Causes of this would be curious to examine."* —Letter from John Adams to his cousin Samuel Adams in 1785

We share John Adams's curiosity about the root causes of his native countrymen's passionate embrace of luxury. There is a Historic Deerfield decorative arts forum "A Passion for Luxury: Tastemakers and Trendsetters in Early New England: 1715–1815" on November 11-13.

Beginning in the early Eighteenth Century, some New Englanders earned large profits from shipbuilding and the distillation of rum, as well as from the shipment of goods, raw materials and human cargo throughout the Atlantic and West Indies. In that thriving economic atmosphere, commerce, artists and artisans, and ideas flourished. These trendsetters, both consumers and the innovative designers and craftsmen they patronized, became the regional tastemakers other New Englanders strove to emulate, launching the region's consumer revolution of the Eighteenth Century.

After political independence from Britain, New Englanders focused artistic energy and excitement on locally manufactured goods and imports from new trading partners, fueling in the process anxieties and debates on the question of American cultural inferiority.



This forum brings together an impressive group of scholars who will offer a variety of perspectives on our topic of tastemakers and trendsetters in early New England. Forum speakers and demonstrators include Judy Anderson, Zara Anishanslin, Caryne Eskridge, Hugh Glover, David (Ned) Lazaro, John Tschirch, Alexander

von Hoffman and Kariann Akemi Yokota. The forum also offers opportunities for workshops in the areas of silver, costume, furniture and architecture.

For information and to register, [www.historic-deerfield.org](http://www.historic-deerfield.org) or contact Julie Orvis at 413-775-7179.

## Jewett-Berdan



Important double Joseph H. Davis watercolor interior scene circa 1834. This is the only example known to have a full size sofa.

Thomas J. Jewett

15 Hopkins Hill Road  
Newcastle, Maine 04553

(207) 563-3682

[www.jewettandberdan.com](http://www.jewettandberdan.com)[jewett-berdan@roadrunner.com](mailto:jewett-berdan@roadrunner.com)

Charles P. Berdan

# THE ADA/HISTORIC DEERFIELD ANTIQUES SHOW

SPECIAL SHOW SECTION



STEPHEN-DOUGLAS, Rockingham, Vt. / Walpole, N.H. — Blackhorse weathervane with an exceptional original surface and dating from the Nineteenth Century.



A BIRD IN HAND, Florham Park, N.J. — This polychrome hand carved totem pole by John Williams is signed on the back and has a description of the figures. The Williams family made totems for the "Ye Old Curio Shop" in Seattle, Wash.



PETER H. EATON, Newbury, Mass. — A rare, perhaps unique, "roundabout" chair made of maple and pine with well-turned legs and stretchers and a shaped back support, probably in the third quarter of the Eighteenth Century. Originally painted red, it has a coat of black paint with striping which was added in the mid-Nineteenth Century. In "as descended" condition, I first saw this chair at Roger Bacon's in the 1970's — and have owned it three time since then.



ELLIOTT & GRACE SNYDER, South Egremont, Mass. — An exceptional Seventeenth Century English needlework picture depicting Catherine of Braganza, wife of Charles II. It is in excellent color and condition.



AXTELL ANTIQUES, Deposit, N.Y. — A maple burl belt cup with a New York State origin.

For More Details:  
[WWW.ADADEALERS.COM](http://WWW.ADADEALERS.COM)

STEPHEN & CAROL  
**HUBER**  
 America's Preeminent Source for Girlhood Embroideries



Jeptha's Rash Vow  
 Misses Pattens' school - Silk Embroidered Picture - Hartford, CT c.1820

ALWAYS INTERESTED IN PURCHASING FINE NEEDLEWORK  
 FORTY FERRY ROAD, OLD SAYBROOK  
 CONNECTICUT 06475  
 TEL 860.388.6809 • Hubers@AntiqueSamplers.com  
[www.AntiqueSamplers.com](http://www.AntiqueSamplers.com)

*A Bird In Hand Antiques*  
 Florham Park, New Jersey



Tel. (973) 410-0077  
[antiques@abirdinhand.com](mailto:antiques@abirdinhand.com)  
[www.ABirdInHand.com](http://www.ABirdInHand.com)



**American Gilded  
 Hand Carved Wooden Eagle**

Circa: 1<sup>st</sup> Quarter  
 of the 20th Century  
 39" wide



Stoneware-Decoys-Painted Furniture-Grenfell Mats-Folk Art

# THE ADA/HISTORIC DEERFIELD ANTIQUES SHOW

SPECIAL SHOW SECTION



ELLIOTT & GRACE SNYDER, South Egremont, Mass. — A charming needlework picture signed "By Elizabeth Lovering NH 1800."



AXTELL ANTIQUES, Deposit, N.Y. — A half-gallon stoneware butter crock from Fulper Pottery in New Jersey.



LANGENBACH'S FINE ART AND ANTIQUES, Kingston, Mass. — Double overlay cobalt to white to clear lamp measuring 16 3/4 inches tall.



STEPHEN-DOUGLAS, Rockingham, Vt. / Walpole, N.H. — Large carved pictorial bride's box dated 1849 in the original polychrome decoration that includes a house, multiple animals and potted trees. It is probably Netherlands origin.



BERNARD & S. DEAN LEVY, INC, New York City — A Connecticut Chippendale cherry chest of drawers, circa 1770.

## PETER H. EATON

AMERICAN FURNITURE

A CLASSIC 'HEART AND CROWN' ARMCHAIR in the finest 'as descended' surface—original black paint with great wear characteristics. Shaped and pierced crest, molded banisters, turned under arm supports and with boldly-turned front stretchers. Maple, ash, and poplar, south-central CT, third quarter of the 18th century. 48" ht. Bought privately from a Maine family with roots in Nantucket and coastal CT.



# THE ADA/HISTORIC DEERFIELD ANTIQUES SHOW

SPECIAL SHOW SECTION



**AXTELL ANTIQUES, Deposit, N.Y.** — American ash burl covered sugar bowl with a matching spoon.



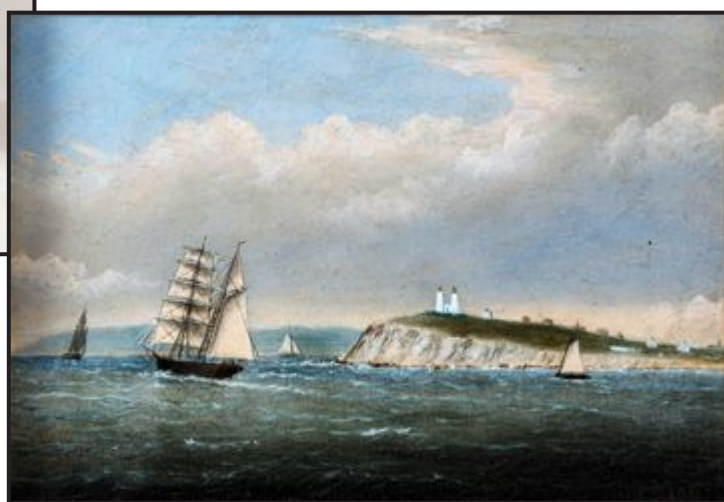
**PETER H. EATON, Newbury, Mass.** — A classic Portsmouth area, circa 1740–60, traditional sidechair with slender back, block and vase turned legs and huge “Spanish” feet. It is maple, in an older shellac finish and measures 41 inches high, 17½ inches seat height. It bears a museum collection number on a back post.



**LANGENBACH'S FINE ART AND ANTIQUES, Kingston, Mass.** — Philadelphia iron and brass andirons, circa 1735, 20½ inches tall.



**JEWETT-BERDAN, Newcastle, Maine** — Rebekah Lund Dunstable, Mass., family register sampler. It is large scale and measures 27 by 29 inches framed.



**LANGENBACH'S FINE ART AND ANTIQUES, Kingston, Mass.** — Clement Drew (1806–1889), oil of Gurnet Light, Plymouth Harbor, 1884, measuring 8 inches tall and 12 inches wide.

ADADEALERS.COM

## STEVEN S. POWERS

360 COURT STREET #28, BROOKLYN, NY 11231 | 718.625.1715 OR 917.518.0809 | STEVENPOWERS.COM | MEMBER: ADA



Exceptional Eastern Great Lakes Woodlands (Iroquois)  
Circa: 1780-1800  
Size: 13 1/2" (l) x 12 1/8" (w) x 6 1/4" (h)

WORKS OF  
& AMERICANA **ART**



## JEFFREY TILLOU ANTIQUES



Rare Queen Anne Tavern Table, Probably Philadelphia, ca. 1730-1750  
Yellow pine, soft maple. Having a thumb-molded, one board top above a rectangle frame with beaded-edge nails supported by block and turned splay-legs with a stretcher base terminating into turned feet. Retaining the original top and feet. Originally painted. Traces of a red wash and Spanish brown paint.  
25 3/4" h, 24 1/4" x 17 1/2" (top)

39 West St. "On the Green" in Litchfield, CT 860.567.9693 tillouantiques.com

# THE ADA/HISTORIC DEERFIELD ANTIQUES SHOW

SPECIAL SHOW SECTION



**STEVEN S. POWERS, WORKS OF ART & AMERICANA, Brooklyn, N.Y.** — A choice early American chestnut charger, circa 1740 (or earlier), measuring 14¾ inches long, 14⅛ inches wide and 2¼ inches high. A rare large-scale turning of exceptional color and character. In relation to treen trenchers, treen chargers are exceptionally scarce. This example is remarkably fine with a complex patination.



**STEPHEN & CAROL HUBER, Old Saybrook, Conn.** — Sarah Kuhn, Boston, 1812. Sarah Kuhn at aged 19 worked this large, beautifully executed silk embroidered memorial to her younger brother Daniel who died two years earlier at age seven. The figures are probably Sarah, her fiancé and her mother. Sarah, who lived on Cambridge Street in Boston, was the oldest of ten children born to John Kuhn and Sarah Lapham. The same year she completed the embroidery, she married George Fuller and they had eight children. This sampler is silk and watercolor on silk and measures 32¼ by 38¼ framed.



**MAD RIVER ANTIQUES, LLC, North Granby, Conn.** — An early Twentieth Century oil painting of the ship *Dreadnought*.



**PETER H. EATON, Newbury, Mass.** — A very fine slatback armchair with boldly turned finials, shaped slats, barrel-turned front posts, sausage-turned legs and front stretchers. Made of maple and ash, in old red paint — with "1776" painted on top slat — over original black paint. It is of Connecticut origin, circa 1735–55, and measures 46¾ inches high, 16-inch seat height.



**COLETTE DONOVAN, Merrimacport, Mass.** — Early Eighteenth Century American document box, circa 1730, of white pine with wooden dowel hinges.

## Queen Anne Tea Table

Maple construction tea table with drawer and Dutch feet.

In old dry red paint with scrubbed top.

Measures

30" L x 21" W x 26" H



FOLK ART • BASKETS & STONWARE

EARLY LIGHTING

HEARTH ACCESSORIES • AMERICAN

REDWARE & COUNTRY FURNITURE • TREENWARE

**the Rookery**  
1793  
AXTELL ANTIQUES

*Axtell Antiques*

EARLY AMERICANA -  
RICHARD S. AXTELL  
1 River St., Deposit, NY 13754  
Now open Tuesday through Saturday 10:00 to 4:00  
607-467-4444 • e-mail: rsaxtell@msn.com

# THE ADA/HISTORIC DEERFIELD ANTIQUES SHOW

SPECIAL SHOW SECTION

## Explore Historic Deerfield Columbus Day Weekend



While at the ADA/Historic Deerfield Antiques Show explore Historic Deerfield, from touring museum houses to getting up close to the world-class collections on view at the Flynt Center of Early New England Life. A ticket to the antiques show includes admission to the Flynt Center and the Apprentice's Workshop at Dwight House, where demonstrations on ceramics, woodworking and textiles can be viewed.

Historic trade demonstrations include gunsmithing with Leonard Day and carving and shop joinery with Craig Farrow. Historic Deerfield's open hearth cooks will be demonstrating in the 1784 Hall Tavern kitchen, featuring the quick and hearty meals of "Tavern Fare." Learn about the art of weaving at the History Workshop Building during the "Wonderful Weaving" program; take a turn using the small floor loom and make a woven wall hanging. Note: Some programs may require additional admission.

Historic Deerfield has a well-deserved reputation for its masterworks in New England furniture, early American metalwares, textiles, needlework and costumes, English and Chinese ceramics, paintings and prints. The Flynt Center of Early New England Life, which opened in 1998, provides a 27,000-square-foot, state-of-the-art facility containing climate-controlled exhibition galleries, visible storage area and collection storage for the museum's most sensitive and highly valued collections. The Flynt Center is open for self-guided tours daily during the regular season from 9:30 am to 4:30 pm.

On view in the lobby at the Flynt Center of Early New England Life is "Natural Selections: Flora and the Arts," until February 12, which explores through more than 20 objects how nature has inspired, impressed and enlightened society long before the publication of Charles Darwin's *On the Origin of Species* in 1859.

Using three themes, the exhibition explores the subject of flora and how it inspired the decorative arts. "Botanical Studies" looks at the movement to classify, study and teach through a selection of educational books and prints detailing floral anatomy and stages of life. "Art in Nature" delves into the museum's rich collection of decorative arts to see how plants and flowers have influenced designers and craftspeople in fields as diverse as textiles, ceramics, furniture and architecture. Finally, "Domesticating the Outdoors" showcases ceramic and glass vessels which brought colorful and fragrant flowers and plants indoors for personal enjoyment and study.

The Helen Geier Flynt Textile Gallery features the Flynt



Center's permanent exhibition "Celebrating the Fiber Arts" that includes a new rotation of textile and fashion items, including a display of hats from her collection. The other permanent exhibition, "Into the Woods: Crafting Early American Furniture," provides the opportunity to learn about antique furniture from the inside out, and gain a new understanding of the materials and craftsmanship that went into the creation of these spectacular objects through graphics, before-and-after views of conservation treatments and innovative "exploded view" display techniques.

In the lobby of the Flynt Center, "Engraved Powder Horns from the French and Indian War and the American Revolution: The William H. Guthman Collection," is one of the finest assemblages of this indigenous and unique American art form ever presented, and these 75 powder horns offer a wealth of documentary information about the original owners and carvers who created them.



# THE ADA/HISTORIC DEERFIELD ANTIQUES SHOW

SPECIAL SHOW SECTION



**BERNARD & S. DEAN LEVY, INC.**, New York City — A New England Queen Anne figured maple highboy dating circa 1760.

**JEFFREY TILLOU ANTIQUES**, Litchfield, Conn. — Portrait of a schooner with an American flag, artist unidentified, American, dating from the Nineteenth Century. This oil on panel is in a cove molded frame that appears to be original and measures 14¾ by 18¾ inches. It is in untouched original condition, minor abrasions, and ex collection Howard Richmond.

**DAVID L. GOOD ANTIQUES**, Camden, Ohio — Extremely rare earthenware mug, Alamance Co., North Carolina, attributed to the Loy Family, circa 1830.



**MAD RIVER ANTIQUES, LLC**, North Granby, Conn. — A 2-gallon stoneware jug with a rare decoration of a long-necked bird looking backwards. It was made at the pottery of J. Norton & Co in Bennington, Vt., between 1859 and 1861.



**JEWETT-BERDAN**, Newcastle, Maine — A selection of the New England redware to be offered at the show.



**BERNARD & S. DEAN**  
**Levy** INC.  
The Finest American  
Antiques & Art Since 1901

**Bernard & S. Dean Levy Inc.**  
24 East 84th Street  
New York, NY 10028  
212-628-7088  
[www.levygalleries.com](http://www.levygalleries.com)

## Queen Anne Oval Top Tea Table

Massachusetts or Rhode Island  
Circa 1760

Primary Wood: Maple  
Secondary Wood: Maple

Height: 27¼ inches  
Width: 31¾ inches  
Depth: 23¼ inches





# THE ADA/HISTORIC DEERFIELD ANTIQUES SHOW

SPECIAL SHOW SECTION



9'8x13'10 Serapi Circa 1890

Ralph & Karen DiSaia

## ORIENTAL RUGS

Connecticut's Trusted Resource  
for Distinctive Antique Carpets

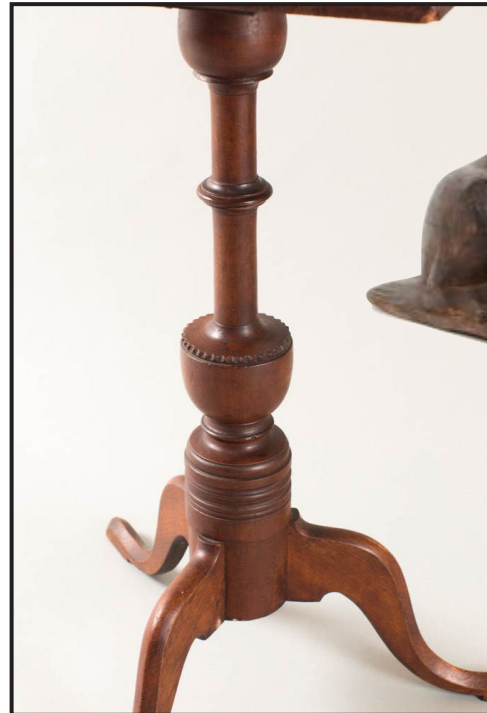
**Oriental Rugs Ltd.**

23 Lyme Street, Old Lyme, CT 06371  
orientalrugs@snet.net • 860-908-0076

*open by appointment*



[www.orientalrugsltd.com](http://www.orientalrugsltd.com)



PETER H. EATON, Newbury, Mass. — Detail of a gutsy country Queen Anne Connecticut candlestick with mold-ed-edge top, exceptional shaft with crisp turning and deep chip-carving to top edge of urn. It is cherry throughout in the original brown stain and measures 27½ inches high with a 15¼ by 15-inch top.



STEVEN S. POWERS, WORKS OF ART & AMERICANA, Brooklyn, N.Y. — Folk art carved grizzly bear, circa 1875, measuring 10<sup>7</sup>/<sub>8</sub> inches long, 6<sup>5</sup>/<sub>8</sub> inches wide and 6 inches high. This large, one-piece carving is of remarkable character and surface. The hefty bear is shown on all fours with one hind leg coming through to the front.



JEWETT-BERDAN, Newcastle, Maine — Early American watch hutch with tree design, circa 1820.



COLETTE DONOVAN, Merrimacport, Mass. — Rare pair of adjustable pricket candleholders, probably English.



BERNARD & S. DEAN LEVY, INC, New York City — A small bowed-front Federal sideboard, Boston or Salem, circa 1790.

# THE ADA/HISTORIC DEERFIELD ANTIQUES SHOW

SPECIAL SHOW SECTION



JEWETT-BERDAN, Newcastle, Maine — Fine New England decorated box with theorem decoration, circa 1835.



AXTELL ANTIQUES, Deposit, N.Y. — A folk art sculpture of a rooster made from a single piece of pine. It is from Pottstown, Penn., 1892, and standing 13 inches tall.



ELLIOTT & GRACE SNYDER, South Egremont, Mass. — Unusually elegant cupboard in the original yellow, New England, circa 1820.



MAD RIVER ANTIQUES, LLC, North Granby, Conn. — A vibrant geometric hooked rug dating to the early Twentieth Century.



A BIRD IN HAND, Florham Park, N.J. — Bennington pheasant on a stump, a stunning, vivid example of a long-tailed pheasant on a 2-gallon jar by J&E Norton, Bennington, Vt., dating circa 1850-59, in excellent condition.

## NATHAN LIVERANT AND SON LLC ANTIQUES



Oil on canvas portrait of young woman in diaphanous white dress.  
Subject identified by family tradition as Lucy Mygatt Adams (1797-1885) of Danbury, Connecticut and Warren, Ohio.  
Unsigned. American, circa 1820.



168 SOUTH MAIN STREET  
P.O. Box 103, COLCHESTER, CT 06415  
(860) 537-2409  
FAX (860) 537-0577  
mail@liverantantiques.com  
www.liverantantiques.com



# THE ADA/HISTORIC DEERFIELD ANTIQUES SHOW

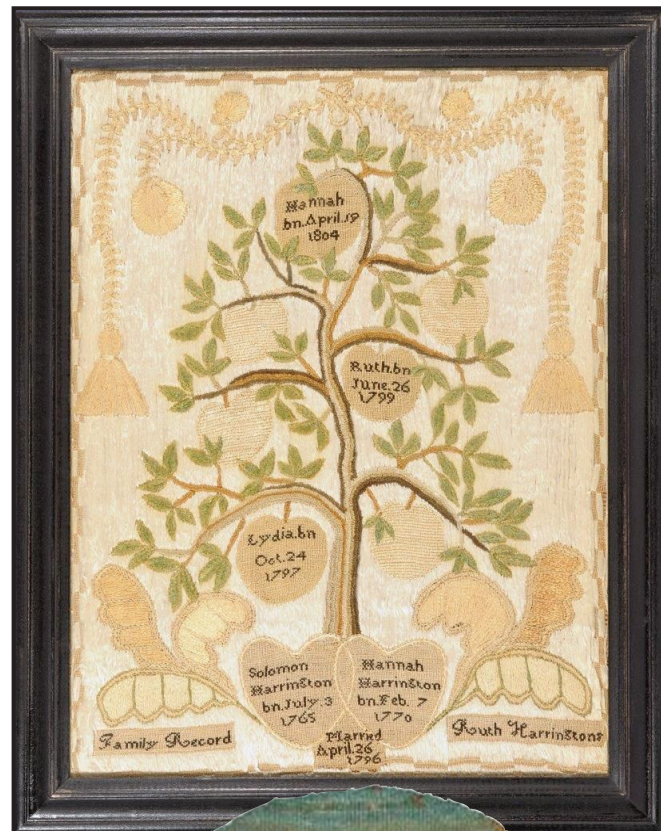
SPECIAL SHOW SECTION



**STEPHEN & CAROL HUBER**, Old Saybrook, Conn. — Ruth Harrington, Charlestown, Mass., circa 1810. Family record samplers with apple tree motifs and graphic depictions of family units were popular. This lavish example stitched by Ruth Harrington, probably when she was about 11 years old, is embellished with an arched swag and tassel border, and a very ambitious overall stitched background. Ruth was the daughter of Solomon Harrington (b July 3, 1765) and Hannah Pierce (b Feb. 7, 1770). It is silk on linen and measures 14¾ by 11½ inches sight.

For More Details:  
[WWW.ADADEALERS.COM](http://WWW.ADADEALERS.COM)

**DAVID L. GOOD ANTIQUES**, Camden, Ohio — Colonial period 24-rib mug with molded strap handle, illustrated: “American Glass” by George and Helen McKearin, plate 25, n. 4, retains the original McKearin label.

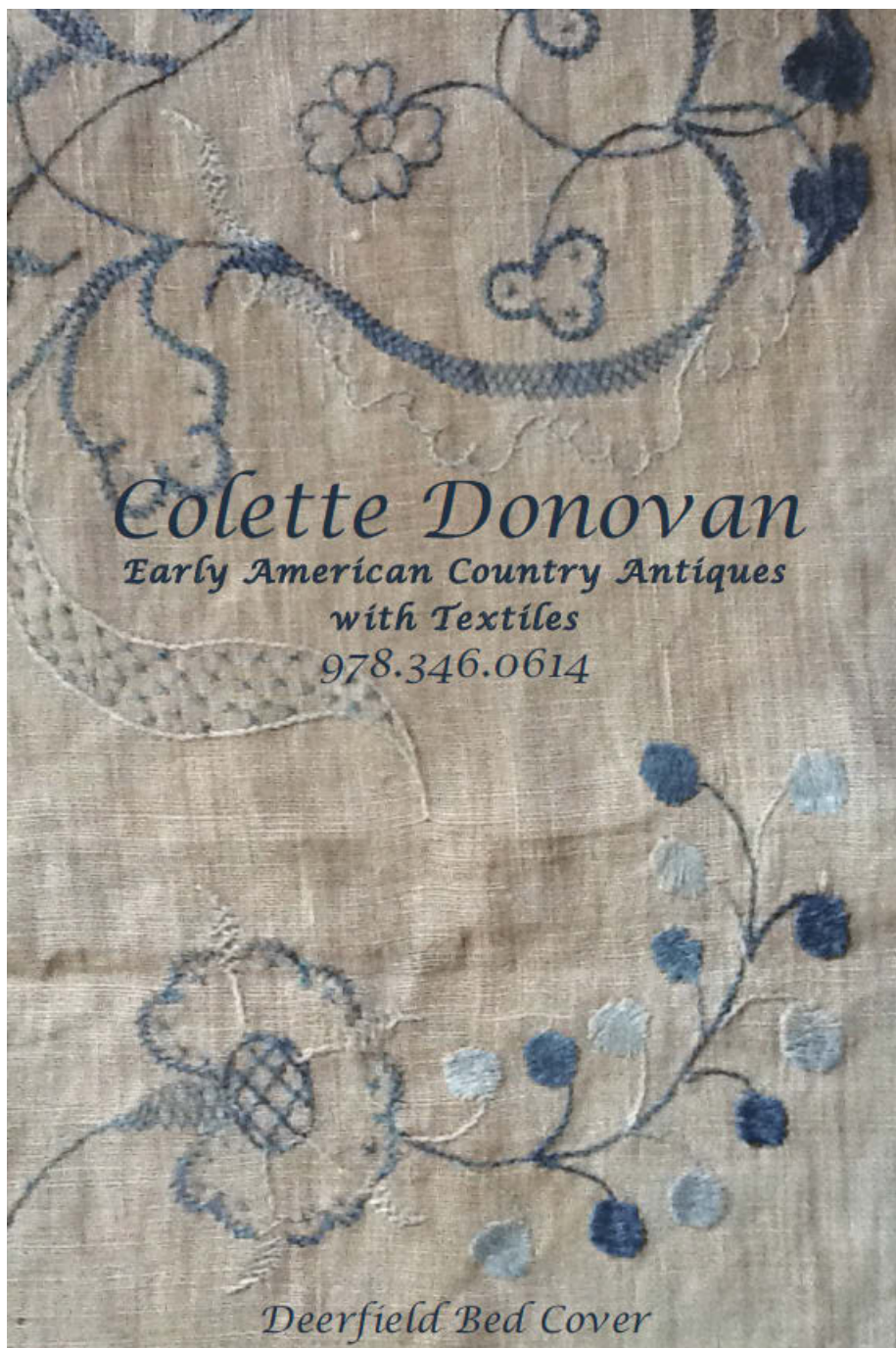


Columbus Day  
 Weekend  
 Saturday  
 & Sunday  
 October 8 & 9

**A BIRD IN HAND**, Florham Park, N.J. — This Grenfell Mission “Seagulls” is on a blue/green water and sky and hooked from silk stockings with label attached. It dates circa 1930 and measures 10 inches in diameter.

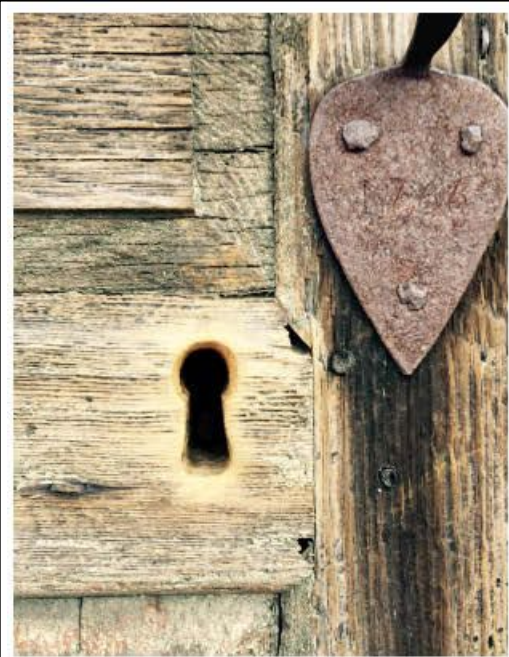


**NATHAN LIVERANT AND SON, LLC**, Colchester, Conn. — Group silhouette street scene with buildings, people and animals, ink and paint on paper, England, circa 1845-70, unsigned.



*Colette Donovan*  
 Early American Country Antiques  
 with Textiles  
 978.346.0614

*Deerfield Bed Cover*



**Hollis E. Brodrick**

*Arts & Artifacts of Early New England*

By appointment at 171 Washington Street, Portsmouth, NH  
 Mailing Address: PO Box 30, Portsmouth, NH 03802  
 Phone: 603-828-6158 • e-mail: [hollisantiques@gmail.com](mailto:hollisantiques@gmail.com)

# THE ADA/HISTORIC DEERFIELD ANTIQUES SHOW

SPECIAL SHOW SECTION

## STEPHEN • DOUGLAS

Rockingham, Vermont • 802-463-4296 • Walpole, New Hampshire



Folky English overmantel, 19th century.



STEPHEN-DOUGLAS, Rockingham, Vt. / Walpole, N.H. — A wonderful large carved wooden horse in the original painted surface.



DAVID L. GOOD ANTIQUES, Camden, Ohio — Important American seal bottle for Isaac Beers, 1774, New Haven, Conn. It is probably produced by Samuel Bayard & Co., New York.

NATHAN LIVERANT AND SON, LLC, Colchester, Conn. — Child's-size Queen Anne mushroom armchair featuring bold turned handholds and a green painted surface. It is Norwich or New London, Conn., circa 1720-45.



## Langenbach's

Fine Art and Antiques



"Tennis anyone?"

164 Elm Street, Kingston, MA 02364 • 781-585-6123 (Day) 781-585-6529 (Evening) • E-mail: [langenbach@verizon.net](mailto:langenbach@verizon.net)



# THE ADA/HISTORIC DEERFIELD ANTIQUES SHOW

SPECIAL SHOW SECTION



STEPHEN & CAROL HUBER, Old Saybrook, Conn. — Mary Greenleaf, Ann Waters Woodman School, Newbury, Mass., 1796. Mary wrought this stunning sampler at aged 19 while attending the Ann Waters Woodman School. The distinctive facing parrots are a well-known characteristic of the school as is the trefoil border. Mary (1786-1863) was one of nine children born to Abner Greenleaf (1761-1853) and his wife Sarah Hale (1766-1853) in Newbury, Mass. Mary married William Carr (1781-1855), a tanner, in 1805 and they had five children. This sampler is silk on linen and measures 20¼ by 15 inches sight.

BERNARD & S. DEAN LEVY, INC, New York City — A rare Seventeenth Century Carver chair from Kingston, R.I., circa 1670.



STEVEN S. POWERS, WORKS OF ART & AMERICANA, Brooklyn, N.Y. — Bull Durham, circa 1920, measuring 17 inches long and 12 inches high. This large-scale folk art carving has an extraordinary paint surface and was created by a shell-shocked World War I veteran who found therapy in carving.



JEFFREY TILLOU ANTIQUES, Litchfield, Conn. — A locomotive weathervane dating from the Twentieth Century of sheet metal with iron strapping. The condition is fine and it retains some traces of the original red paint. It measures 21 inches high by 24 inches wide, 28 inches high with stand.

## ELLIOTT & GRACE SNYDER

P.O. Box 598 • South Egremont, MA 01258  
413-528-3581 (T) • 413-441-4065 (C)  
info@elliottandgracesnyder.com  
www.elliottandgracesnyder.com



### The Sacrifice Of Isaac

Early 18th c. needlework picture in exceptional color and condition. England, c. 1700-20, 19" x 20½"  
Ex. Cora Ginsburg

## JOHN KEITH RUSSELL ANTIQUES, INC.



### Important Shaker Desk on Frame

Decended in the Meacham Family of Enfield, CT  
Undisturbed original condition.

(914) 763-8144 • email: jkr@jkrantiques.com  
110 SPRING STREET, SOUTH SALEM, N.Y. 10590  
www.jkrantiques.com



# THE ADA/HISTORIC DEERFIELD ANTIQUES SHOW

SPECIAL SHOW SECTION



## Mad River Antiques, LLC



Steve & Lorraine German  
North Granby, CT 06060

Phone: (860)-653-5733  
Email: [madrivanantiques@aol.com](mailto:madrivanantiques@aol.com)  
Web: [www.madrivanantiques.com](http://www.madrivanantiques.com)

An assembled collection of two, three and four gallon ovoid jugs with identical floral decorations, made at the pottery of Norton and Fenton in Bennington, VT between 1843 and 1847.



**JEFFREY TILLOU ANTIQUES**, Litchfield, Conn. — Patchen horse weather-vane in an imposing size, American, probably New England, circa 1880-95. It is full-body copper with cast iron head with traces of over-gilt, fine condition and retaining some traces of original surface with verdigris. The vane measures 21 inches high by 44¾ inches wide.



**COLETTE DONOVAN**, Merrimacport, Mass. — Yarn-sewn modern art dating from the mid-Nineteenth Century.



X-base stand  
c.1730  
Early surface  
Initial "AK"  
under base

## David L. Good ANTIQUES

7887 State Rt. 177, Camden, Ohio 45311  
Phone: (513) 796-2693 Cell: (937) 478-1378

## Schwenke

Visit us at  
The 2016 ADA / Historic  
Deerfield Antiques Show

Columbus Day Weekend  
Saturday, October 8, 2016 ~ Sunday, October 9, 2016



Superb Federal Gilt Mahogany Mirror, Probably Connecticut, circa 1800

203-266-0303 • [www.schwenke.com](http://www.schwenke.com)