

PART ONE



Antiques In Manchester

PARTICIPATING DEALERS

A Bird in Hand
 Mark and Marjorie Allen
 American Sampler
 American Spirit Antiques
 Arborfield Americana*
 Brennan and Mouilleseux*
 Joan Brownstein
 Brett Cabral*
 Carlson and Stevenson Antiques*
 Thomas Clark*
 Don and Pat Clegg*
 Cottage+Camp*
 Colette Donovan
 Dover House
 Peter H. Eaton Antiques Inc.
 Emele's Antiques
 J & R Ferris Antiques
 Firehouse Antiques
 Samuel Forsythe
 Gemini Antiques
 Pat and Rich Garthoeffner
 Garvey Rita Art and Antiques
 David Good
 Norman Gronning Antiques
 The Hanebergs Antiques
 Heller Washam Antiques
 Jeffrey Beal Henkel*
 Samuel Herrup Antiques
 Michael Hingston Antiques
 Stephen & Carol Huber
 James M. Kilvington, Inc.
 James Kochan
 Greg Kramer & Co.
 William Kurau
 Langenbach's Fine Art & Antiques
 James Wm. Lowery Fine Antiques and Arts
 Sheridan Loyd
 Mad River Antiques LLC
 John Hunt Marshall
 Hilary and Paulette Nolan
 Daniel and Karen Olson
 Don Olson Fine American Antiques
 Randi Ona Antiques
 Oriental Rugs Ltd.
 Steven S. Powers
 James L. Price Antiques
 Derik Pulito
 Quiet Corner Antiques
 Dennis Raleigh
 RGL Antiques
 John Keith Russell
 Saltbox Antiques
 Elle Shushan
 Lana Smith
 Steve Smoot Antiques and Navaho Textiles
 Elliott and Grace Snyder
 Robert Snyder and Judy Wilson
 Jeffrey Tillou Antiques
 The Village Braider
 Jane F. Wargo
 Paul and Karen Wendhiser
 Charles Wilson
 David White*
 David A. Zabriskie
 *New dealers this year



Antiques In Manchester

2016

The Collector's Fair

Sullivan Arena, on the beautiful campus of St. Anselm College, Manchester, NH

Wednesday, August 10
10 am - 7 pm

Thursday, August 11
12 pm - 6 pm



Antiques in Manchester is celebrating our 5th year
with an expansion of the dealer list.

Antiques week in New Hampshire is one of the most anticipated events of the year for collectors and lovers of Americana, and our show will have something for everyone! Come enjoy this week of history, humanity, art, experience and an opportunity to learn about and acquire great objects. Come make a connection!



Free Parking • Cafe • Air Conditioned
Admission \$15.00 • On Site Shipper, Mastercard and Visa



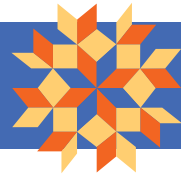
Shuttles will run from Antiques in Manchester to Midweek in Manchester every 30 minutes from noon to 6:00 pm on Wednesday, August 10th. Leave your car at AIM and enjoy the convenience of a ride to the other show and back.

GPS location: 101 St. Anselm Drive, Manchester, NH • Watch for highway signs to St. Anselm College.

www.thecollectorsfair.com



Antiques In Manchester



PART ONE

This section was designed and published by The Bee Publishing Company, 5 Church Hill Road, Newtown, CT 06470; 203-426-8036



BRETT CABRAL ANTIQUES, Salem, N.H. — Nineteenth Century pantry boxes in original surface.

GARVEY RITA ART & ANTIQUES, West Hartford, Conn. — Willie Tomlinson produce sign, painted wood, 32 by 32 inches, American, and dating from the Twentieth Century.



STEVE SMOOT ANTIQUES, Lancaster, Penn. — Tramp art case of 11 spice drawers, 15 inches high, dating circa 1890.

STEVEN S. POWERS, Brooklyn, N.Y. — Dr Gail phrenology burl snuff box, circa 1820, measuring 3¼ inches in diameter and three-quarter inches high.



VILLAGE BRAIDER, Plymouth, Mass. — Carved and painted horse weathervane from Jamestown, R.I., measuring 28 inches long.

RGL ANTIQUES, Pittstown, N.J. — A Nineteenth Century American tall looped pitcher measures 12 inches high. It has a beautiful form and presence. The Nineteenth Century American redware plate with folk art decorated bird is 12 inches in diameter and is attributed to New Jersey.

JEFFREY TILLOU ANTIQUES

Thistle Weathervane
 American, ca. 1880-1895. Full body copper, sheet copper
 Condition: Minor imperfection, wonderful verdigris surface This rare and possibly unique form of weathervane was most likely made for an out-building. 20”h (w/stand) x 14” w x 6” d

39 WEST STREET, ON THE GREEN, LITCHFIELD, CT (860) 567-9693

TILLOUANTIQUES.COM

SAMUEL W. FORSYTHE ANTIQUES

Columbus, Ohio 43214 • Tel/Fax 614-261-7489

PART ONE



Antiques In Manchester

Welcome To Antiques In Manchester

'The Collectors Show' August 10-11

Manchester, N.H., in August is a magnet for anyone with an interest in the history and material culture of America. In our little world of antiques, this is one of the most anticipated weeks of the year. Perhaps because it has been able to hold on to most of the events that make it such a great experience, people flock here from all over the United States. They come looking for one object that speaks to them in some deep way or for an entire house of things that will make them feel at home.

I think it is a unique shopping experience, and all who come look forward to being there every year. Those who come from great enough distance to stay in Manchester for a few days enjoy running into old friends and fellow collectors. This little city becomes a breeding ground for great collectors as the experienced often mentor the beginners.

This wonderful week connects us all with our own sense of humanity. As we look at things from our collective pasts, we feel more in touch with what is around us. We see that certain needs of humanity have been ever present — beauty, humor, creativity, function and form, warmth — all are visible in the unique, handmade objects available to see and own in these shows. We find our thrill of the hunt, our pleasure in the acquisition of something that pleases us, and our need for connection, all answered in this jam packed week.

I love watching people as they take a moment to sit in



Karen and Ralph DiSaia

the café and have a bite to eat. Most often they sit down at one of the big tables with other people — there is a need for human contact around all of these objects that is clear. I love that people asked to sit with a group they

don't actually know — and by the time they all get up new friends have been made because there is so much common ground among those who collect. Connections made here are renewed with each additional event and each additional year.

This year we have expanded the footprint of the show to incorporate more dealers. We want to welcome back our steadfast and loyal dealers and welcome our new ones — Arborfield Antiques, Brennan and Mouilleseaux, Brett Cabral, Carlson and Stevenson Antiques, Patricia Clegg Antiques, Cottage+Camp, Firehouse Antiques, The Hannebergs Antiques, Jeffrey Beal Henkel, James Kochan, William R. and Teresa F. Kurau, Randy Ona, Quiet Corner Antiques, Steve Smoot Antiques and Navaho Textiles, and White's Nautical Antiques, bringing our count to 63 excellent dealers with an amazing range of material.

Plan to spend the day — it will take awhile to get through this show properly and fully enjoy what you will see. If you want to take a run to Midweek to see what is there, we offer a shuttle that will take you and bring you back, starting at noon. Come and look, talk and learn — make connections that will last a lifetime. We look forward to seeing you on August 10 and 11.

For additional information, www.antiquesinmanchester.com for a dealer list, and preview pieces that will be at the show. Check our Facebook page, Antiques in Manchester, for short interesting stories about things you will find.

JEFFREY TILLOU ANTIQUES, Litchfield, Conn. — Half-hull model, SS *Moravian*, English, mid-Nineteenth Century, mahogany plaque of pine and in excellent condition. The hull retains the original painted surface. SS *Moravian* was built by Robert Steele and Company in 1864 at Greenock and the ship was part of the Allan Line operating out of Liverpool, England. The maiden voyage in 1864 was from Liverpool to Portland, Maine. The *Moravian* wrecked near Cape Sable off Nova Scotia in 1881. It measures 18 by 96 by 6 inches.



Rare early English delft charger with oak-leaf decoration, late 17th Century. Diameter 13 1/2". Ex Jonathan Horne. No restoration.



Unusual Portuguese faience portrait charger, 3rd quarter of the 17th Century. Diameter 13". Dishes of this type have been excavated at Jamestown, VA. No restoration.

SAMUEL HERRUP ANTIQUES

116 Main Street, P.O. Box 248, Sheffield, MA 01257



(413)229-0424 c: (413)822-1471 • E-mail: herrup@verizon.net • Web: www.samuelherrup.com

Antiques In Manchester PART ONE



JOAN R. BROWNSTEIN, Newbury, Mass. — Fireboard, painted on poplar, from the Mary Jarvis family homestead. The fireboard is decorated with a compote framed by pink drapes, a very rare decorative motif for a fireboard. Mary Jarvis initiated the holiday, Mother's Day, circa 1825, Webster, W.Va.



FIREHOUSE ANTIQUES, Galena, Md. — Rooster weathervane from upstate New York, heavy gauge sheet metal with countless indentations from shot gun pellets. It retains traces of the original black pigment on oxidized iron, untouched surface, dates from the late Nineteenth to early Twentieth Century, and measures 23 inches wide and 15 inches deep.



STEPHEN & CAROL HUBER, Old Saybrook, Conn. — Family record samplers with apple tree motifs were popular and graphic depictions of family units. This lavish sampler stitched by Ruth Harrington, Charlestown, Mass., circa 1810, probably when she was about 11 years old, is embellished with an arched swag and tassel border and a very ambitious overall stitched background. Ruth was the daughter of Solomon Harrington (b July 3, 1765) and Hannah Pierce (b February 7, 1770). It is silk on linen and measures 14 3/4 by 11 1/2 inches sight.



J&R FERRIS ANTIQUES, Boonville, N.Y.



RANDI ONA, Wayne, N.J. — "Carrot Man" — the iconic velvet carrot.



WHITE'S NAUTICAL ANTIQUES, North Yarmouth, Maine — Rare topsail sloop pond model rigged with "deadeyes."



FIREHOUSE ANTIQUES, Galena, Md. — From upstate New York, a horse farm sign painted on an early cupboard door, early Twentieth Century, with oxidized white paint with black lettering. The surface is untouched and it measures 41 inches wide and 19 1/2 inches deep.



Ca. 1850's appliqué Whig Rose pattern quilt executed by Mary Giddings Somers of Litchfield County, CT. 91" x 91"

For more information please call.

Derik Pulito

18th & 19th Century Country Americana



KENSINGTON, CT
(860) 828-0588

By Appointment Only

JAMES L. PRICE ANTIQUES



"This chest belongs to me"
Magdalena Reider 1791

Walnut Chest, Rapho Township Area, Lancaster County, Pennsylvania, 1791.
Walnut with Painted Geometric Compass Stars and Fraktur Lettering
Height 23 1/2", Width 50 1/2", Depth 23 3/8"

Possibly the same hand as the Rahel Friedrich Walnut Chest dated 1791

225 years later this chest can belong to you!

P.O. Box 919
Carlisle, PA 17013

717-448-9272
jamie@priceantiques.com

PART ONE Antiques In Manchester



**JOHN KEITH RUSSELL
ANTIQUES, INC.**

Fine Shaker Work Table with Drawer.
A very elegant classic table of moderate size. Birch and flame birch retaining an old stain and varnish surface. Probably Enfield, NH. Circa 1840.
H. 28", W. 42", D. 28 3/16"

(914) 763-8144 • email: jkr@jkrantiques.com
110 SPRING STREET, SOUTH SALEM, N.Y. 10590
www.jkrantiques.com




VILLAGE BRAIDER, Plymouth, Mass. — Early Twentieth Century painted wood "cat face" birdhouse.



COLETTE DONOVAN, Merrimacport, Mass. — Graphic appliqué table mat.



GARTHOEFFNER GALLERY, Lititz, Penn. — Alfred Montgomery, oil on canvas.

ROBERT SNYDER - JUDY WILSON

AMERICANA - FOLK ART



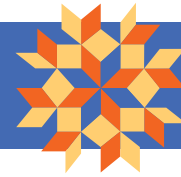
GRAPHIC "HOME SWEET HOME" HOOKED RUG IN SHADES OF BLACK, GRAY & TOUCHES OF RED. WOOL & COTTON ON BURLAP. MOUNTED SIZE: 44 3/4" x 29".

1205 CRESTWYCK CIRCLE, MOUNT JOY, PA 17552

(717) 928-6132 | EMAIL - SNYDERWILSONINPA@GMAIL.COM | WEB - WWW.SNYDERWILSONANTIQUES.COM

EXHIBITING - ANTIQUES IN MANCHESTER - AUGUST 10 & 11 | SULLIVAN ARENA - ST. ANSELM COLLEGE - MANCHESTER, NH

Antiques In Manchester



PART ONE

AMERICAN SPIRIT ANTIQUES, Shawnee Mission, Kan. — American tiger maple, scrubbed top, painted Queen Anne tavern table.



STEVE SMOOT ANTIQUES, Lancaster, Penn. — Gong Bell "Daisy" cast iron pull toy, circa 1890.



STEVEN S. POWERS, Brooklyn, N.Y. — Extraordinary large scale porcelain American eagle, circa 1890–1910, measuring 10 inches deep and 9 3/4 inches high.

JANE WARGO, Wallingford, Conn. — Painted folk art carving of a half schooner with tin sails, mid-Twentieth Century, Martha's Vineyard origin.



thecollectorsfair.com



DAVID A. ZABRISKIE, Lake Placid, N.Y. — American architectural fragment in nice old finish, Nineteenth Century.



STEPHEN & CAROL HUBER, Old Saybrook, Conn. — This beautiful embroidered picture has a handwritten poem on the back, "The Friar of Orders Gray," and is inscribed "Wrought at Mrs Rawson's Academy, Newton, 1806, by Narcissa Sewall." It depicts a wandering young lady seeking her missing young flaxen hair, blue-eyed lover. Unknown to her he has become a friar making vows of chastity and poverty but is still in a one-year trial period. She encounters a friar and enquires about her young lover, he responds "He is dead and in his grave." Her grief, her love and dedication is so persuasive that the friar is swayed to break his vows and reveals he is her lover and saves them both from living lives of longing. Narcissa was from a prominent Maine family, born in York, Maine, in 1791, the daughter of Daniel Sewall and Dorcas Bartlett. She worked this embroidery at age 15 and at age 55 she married Benjamin Bourne as his third wife. This sampler is silk, mica and paint and measures 14 1/2 by 18 1/4 inches sight.

JOAN R. BROWNSTEIN

AMERICAN FOLK PAINTINGS



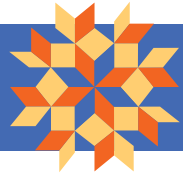
Boy in a Blue Jacket

BY MARY B. TUCKER

FEWER THAN A DOZEN WORKS are attributed to Mary Tucker, and approximately eight more of them are actually signed. Some of those few signed works are dated, always between 1840 and 1844. She is said to be from Massachusetts and active in Boston, as well as the Concord-Sudbury area. The simpler, full profile examples, such as this boy, are always dated between 1840 and 1842.

These works, always on large paper for a drawn portrait, are posed as half length figures. *Boy in Blue Jacket*, executed in graphite, ink, and watercolor, is 19 x 23 1/2 inches sight and 21 x 27 1/2 inches in its period gilded framed with remnants of gilded spandrels on its corners. The work has some unusual and consistent details: a flat line across the bottom and a space below it; no inner shading to the skin, and a firm black outline to the figure that, as it moves away from his body, becomes more diffuse; and an odd black inner ear line where bone meets cheek. This work is virtually identical to a boy in a black jacket in an article by Arthur B. Kern in *Antiques and Fine Arts*, Summer/Winter 2009, p.210.

PART ONE



Antiques In Manchester



DOVER HOUSE ANTIQUES, Louisville, Ky. — Three-panel screen with views of North America — Boston, Zuber et Cie. It measures 65½ inches tall and 57½ inches wide and dates from the mid-Nineteenth Century.

DON OLSON, Rochester, N.Y. — Paint-decorated box by the Compass Artist, Lancaster County, Pennsylvania, circa 1800–40. Of the scarce dome-top boxes by the Compass Artist, this is the smallest size known.



SAMUEL HERRUP ANTIQUES, Sheffield, Mass. — Unusual American molded copper deer weathervane from the late Nineteenth Century with old white paint over gilt. The maker of this delightful and folksy example is unknown. It measures 34 inches long and 21 inches high.



J&R FERRIS ANTIQUES, Boonville, N.Y.



WHITE'S NAUTICAL ANTIQUES, North Yarmouth, Maine — Dutch river boat used as a planter with nine hand carved figures.



DON OLSON, Rochester, N.Y. — Extraordinary, fanciful folk art mirror, likely Pennsylvania, circa 1840–70. A remarkable folk art expression with dramatic silhouette in an outstanding state of originality, including the dry, finely crazed original red and mirror glass.

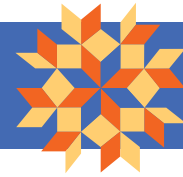
PETER H. EATON

AMERICAN FURNITURE

A VERY FINE COUNTRY QUEEN ANNE tea table with oval top and turned legs ending in 'button' feet. Slightly oversized—but perfectly proportioned and with great surface. The top retains its original red paint and the base an old black paint over the red. Top 37 ½" x 27", 27" ht. Birch throughout, probably NH, c.1760–70.



Antiques In Manchester



PART ONE

AMERICAN SPIRIT ANTIQUES, Shawnee Mission, Kan. — Vermont tiger maple dressing table.



STEVEN S. POWERS, Brooklyn, N.Y. — George Washington phrenology bust inkwell, Hopkinton, R.I., circa 1860, measuring 7 inches long, 7 inches deep and 7 inches high.



DERIK PULITO, Kensington, Conn. — A circa 1720 notch-carved Connecticut blanket chest in old red paint.

AMERICAN SPIRIT ANTIQUES, Shawnee Mission, Kan. — English mocha earthworm pattern pitcher.



JANE WARGO, Wallingford, Conn. — Two Nineteenth Century North East American Indian, stamped, ash splint baskets.



STEVE SMOOT ANTIQUES, Lancaster, Penn. — A sampling of the quality Navajo rugs that will be among the fine examples at the show.



JEFFREY TILLOU ANTIQUES, Litchfield, Conn. — Carved and painted barber pole, American, circa 1875-1900, of turned hardwood, polychrome paint and gilt surface. Condition: Superb condition, minor shrinkage cracks and wear. It retains the original paint and gilt surface and measures 24 by 3 inches.

Jane F. Wargo



19th c. Gameboard with border; tri-colored with white highlights; Maine origin. Nifty Oversized Velveteen Tiger Cat (8 ½" high at head); excelsior stuffed; later 19th c. Small finely woven 19th c. oak splint melon basket (5" H. at handle).

Wallingford, CT (203) 265-0342
jfwargo@comcast.net

White's Nautical Antiques

108 Walnut Hill Rd (Rt 115), North Yarmouth, ME 04097
 207-232-6282 • dave@whitesnauticalantiques.com
 www.whitesnauticalantiques.com



Dutch Gaff Rigged Model ~ Circa 1890-1900

Wonderful folksy Dutch gaff rigged model. The actual boat was most likely used for fishing along the coast or on the many large rivers.

The model is mostly original. The hull, paint, boom, gaff, and sails are original. The mast and bow sprit are replacements. The stand is new.

I believe that this was built by a retired fisherman for this child and meant to be a "pond model". However I am not sure it would actually sail as there is no ballast in the keel.

Size: 24" from end of boom to tip of bow sprit, 33" high from cradle to tip of mast, 8 ½" beam (very wide)

PART ONE  Antiques In Manchester

Summer Sampler Show



- Huge Selection of Historic Needlework (most not on website)
- Incredible Savings (Special Bargain Bins)
- Complementary verbal appraisals (bring your early needlework)

STEPHEN & CAROL HUBER 
America's Preeminent Source for Girlhood Embroideries

Please Join Us For This Special Event
 August 13 & 14, 2016 - Sat. & Sun - 10AM to 5PM

FORTY FERRY ROAD • OLD SAYBROOK, CONNECTICUT 06475 TEL 860.388.6809 • Hubers@AntiqueSamplers.com • www.AntiqueSamplers.com



SAMUEL HERRUP ANTIQUES, Sheffield, Mass. — Excellent oval-top, shoe-foot Hudson Valley hutch table, circa 1720-40, gum, with shaped sides and excellent proportions. It is 26 inches high and the top measures 36 by 42 inches.



COLETTE DONOVAN, Merrimacport, Mass. — Large hand-hewn bowl in the original Spanish brown finish.



SAMUEL HERRUP ANTIQUES, Sheffield, Mass. — Redware dish with yellow slip inscription "James," probably Norwalk, Conn., circa 1840-60, 10 inches in diameter.

Village Braider Inc.
 508-746-9625



White Mountains of New Hampshire by Emile A. Gruppe, 18" x 20"

Antiques In Manchester PART ONE



GARTHOEFFNER GALLERY, Lititz, Penn. — Double-sided sign.



DAVID A. ZABRISKIE, Lake Placid, N.Y. — Sheet iron weathervane of horse and rider, New York State origin and dating from the Nineteenth Century.



DERIK PULITO, Kensington, Conn. — An Eighteenth Century New England pine settle, 60/53 inches tall, 15 inches deep. It is rare and retains the best patina.



GREG K. KRAMER & CO., Robesonia, Penn. — A New England paint-decorated dome top box dating from the Nineteenth Century.



JAMES L. KOCHAN, Wiscasset, Maine — Gorget and epaulette of Lieutenant James Murray of the 20th Foot, mortally wounded during the battle of Orthes, 27 February 1814.



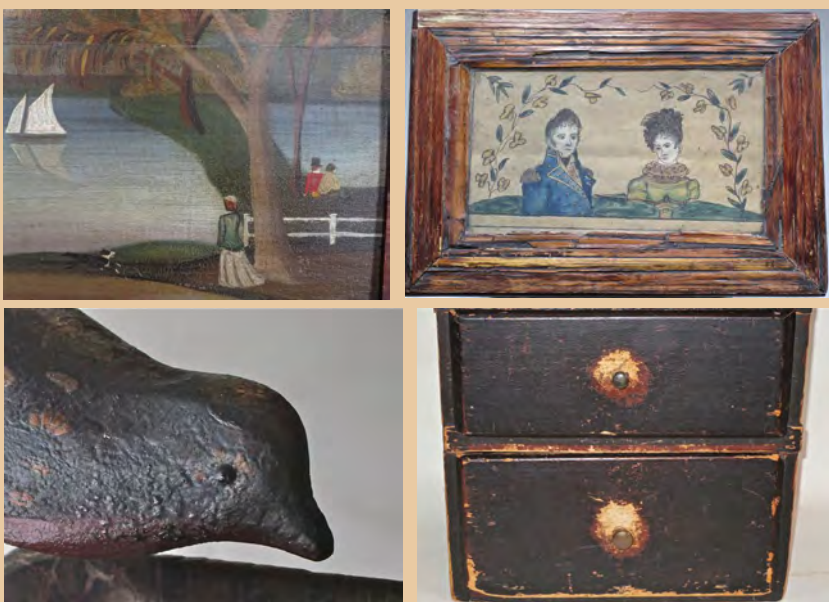
BRETT CABRAL ANTIQUES, Salem, N.H. — Silhouettes and miniature portraits.

DAVID A. ZABRISKIE, Lake Placid, N.Y. — Folky advertising sign made by Utica Sign Company.

Randi Ona Early American Antiques

www.onaantiques.com

onaantiques@optonline.net
973-495-3707



See more at [Booth 57](#)

Antiques in Manchester — *The Collector's Fair*

Salt Box Antiques

Sugarloaf, PA tel 570-788-1716



Is is a New England North Shore cupboard, Ca 1780-1800, in the original red paint.

PART ONE  Antiques In Manchester



FIREHOUSE ANTIQUES, Galena, Md. — New England table mat textile with penny-style tabs surrounding a trapunto spray of vivid flowers in an oval center. It is professionally mounted, measures 34 inches wide and 30 inches deep, and has very minor condition issues.



DON OLSON, Rochester, N.Y. — Very early lace maker's ball, New England, discovered decades ago in Massachusetts. It dates from the Eighteenth Century, pine and linen, the top and bottom panels profusely carved, retaining its untouched rich natural patina.



SAMUEL W. FORSYTHE ANTIQUES, Columbus, Ohio — Fine red painted wall basket showing little wear.



MAD RIVER ANTIQUES, LLC, Steve and Lorraine German, North Granby, Conn. — An early Nineteenth Century needlework depicting a scene from Tasso's epic story "Jerusalem Delivered."



STEVE SMOOT ANTIQUES, Lancaster, Penn. — Advertising trade simulator ironing board, circa 1940, New York State.



COLETTE DONOVAN, Merrimacport, Mass. — Rare stone striker, ex Roger Bacon.



MAD RIVER ANTIQUES, LLC, Steve and Lorraine German, North Granby, Conn. — A large stoneware jar marked "Bennington Factory." This is the first mark from the renowned Norton Pottery of Bennington, Vt., and dates prior to 1823.

CARLSON & STEVENSON, Manchester Center, Vt. — Basket of fruit, watercolor dating circa 1830, American, framed in Nineteenth Century lemon-gold frame.

STEVE SMOOT

ANTIQUES AND NAVAJO TEXTILES

704 RACE AVENUE • LANCASTER, PA 17603
717-393-7794 • 717-468-9719 • EMAIL: smootantiq@aol.com

* Visit My Navajo Rug Gallery on Sundays at Black Angus, Adamstown, PA *

"I am very pleased to join the gallery of fine dealers exhibiting at Antiques In Manchester."



Early Uncle Sam cut out silhouette. Ohio Ca 1920's. 6' tall.



Pair of New England oil on ash panel portraits Ca 1800-1820. Overall 10 1/2" x 8 1/2".



Rampant Eagle carved in the round. Pa origin Ca 1880. 22 1/2" tall.

FALL UPCOMING SHOWS:

Brimfield - Dealers Choice September 6. May's Antique Market September 8.
The Original York Antiques Show September 23,24 & 25. Okemo, Vermont Sept 30 & Oct 1. The Greater York Antiques Show November 5 & 6.

Antiques In Manchester



PART ONE

NOTE
TURN
TO PAGE
AM-13 FOR
ANTIQUES IN
MANCHESTER
PART TWO

PETER H. EATON ANTIQUES, Newbury, Mass. — A fine set of Chippendale chairs with serpentine crests, pierced splats and square, fully-molded legs. There is a scratch bead around the edge of stiles and crest rail. The chairs are mahogany, with maple and birch secondary woods in fine color. They are North Shore, Mass., or perhaps Portsmouth, circa 1790, and measure 38 inches high with an 18-inch seat height.



SAMUEL HERRUP ANTIQUES, Sheffield, Mass. — An unusual large enamel-decorated creamware teapot, English, circa 1810, measuring 9½ inches high and 19 inches wide. It was probably a trade sign or advertising piece.



JANE WARGO, Wallingford, Conn. — Nest of three oak and ash assembled high-handled splint baskets dating from the early Twentieth Century.



WHITE'S NAUTICAL ANTIQUES, North Yarmouth, Maine — A three-masted schooner model in mostly original condition.



DANIEL & KAREN OLSON, Newburgh, N.Y. — Exceptional American basket, shallow with handles, 22 inches in diameter and dating from the Nineteenth Century.



GRONNING AMERICAN ANTIQUES, Shaftsbury, Vt. — Early Eighteenth Century Dutch brass, copper and wrought iron figural andirons.

STEVEN S. POWERS

360 COURT STREET #28, BROOKLYN, NY 11231 | 718.625.1715 OR 917.518.0809 | STEVENPOWERS.COM | MEMBER: ADA



MAN • BEAST • SPIRIT • WOMAN
american folk art from the marvill collection and more - online catalogue available

PART TWO



Antiques In Manchester



PETER H. EATON ANTIQUES, Newbury, Mass. — A classic Essex County tea or breakfast table with one board, molded-edge serpentine top, urn-shaped post and with cabriole legs ending in padded shoe feet. There are no repairs or restoration and it retains a great old surface in both color and quality. The table is from the Newburyport area, circa 1785, mahogany with a birch block, and the top measures 33½ by 33¾, and the height is 27¾ inches.



GRONNING AMERICAN ANTIQUES, Shaftsbury, Vt. — Tinder pistol of steel, wood and brass, stamped Savage and dating from the Eighteenth Century.

NOTE
PART TWO
ANTIQUES IN
MANCHESTER
CONTINUED
FROM PAGE
AM-12



BRETT CABRAL ANTIQUES, Salem, N.H. — Early mortars and pestles: Lignum Vitae and painted.



JOAN R. BROWNSTEIN, Newbury, Mass. — Portrait of a small girl holding a yellow bird, oil on panel, probably New Jersey, circa 1825-30.

*Admission \$15
Free Parking*



CARLSON & STEVENSON, Manchester Center, Vt. — Bottle doll face, close-up, American, circa 1870.



RGL ANTIQUES, Pittstown, N.J. — An Eighteenth Century checker diamond salt attributed to Amelung, ex William Elsholz. This salt has a great impression, is free of damage and retains the original collection sticker. You can find similar examples in museums today.



GARTHOEFFNER GALLERY

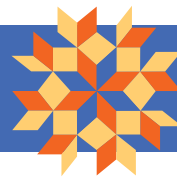
Antiques

Pat and Rich Garthoeffner • Lititz, Pa. 17543 • 717-471-4694 or 717-581-0935



EARLY HOOKED RUG, 56" X 45", WOOL AND COTTON ON BURLAP, CIRCA 1898, VIBRANT COLORS, MOUNTED FOR HANGING.

Antiques In Manchester



PART TWO



One of a pair, 19th C. carved and painted peacocks.

Sheridan Loyd

american antiques





Outstanding folk art cat hooked rug.

Purportedly early theatre ornamentals.

Come see us at the Antiques In Manchester Show - The Collectors Fair

www.sheridanloyd.com
info@sheridanloyd.com

816-364-5027
816-210-6924 - c



LANGENBACH'S FINE ART & ANTIQUES, Kingston, Mass. — Queen Anne table with old colored surface and a molded and shaped top.

DANIEL & KAREN OLSON, Newburgh, N.Y. — A 4-gallon stoneware crock with perky bird on branch, S.L. Pewtress & Co., Fair Haven, Conn. (ex Lew Scranton Collection).




STEVEN S. POWERS, Brooklyn, N.Y. — Folk art wantage rod, Ezekiel Maxson (1789-1870), Hopkinton, R.I., dated 1823 and measuring 43 3/4 inches.


A little bird told me to visit with:

David A. Zabriskie


Lake Placid, New York
518-524-9967




at the Collector's Fair in Manchester



Mad River Antiques, LLC





A rare two gallon jug with a lion decoration. It was made at the pottery of J & E Norton in Bennington, VT and dates between 1850 and 1859.

Steve and Lorraine German
North Granby, CT 06060

Phone: (860) 653-5733
E-mail: madriverrantiques@aol.com
Web: www.madriverrantiques.com

PART TWO



Antiques In Manchester



RGL Antiques

Ralph & Gretchen Franzese

Pittstown, NJ 08867

By Appointment only • 908-930-5615

rglantiques@gmail.com • www.rglantiques.com



19th century American tall looped pitcher. Height 12 inches. Has a beautiful form and presence. 19th century American redware plate with folk art decorated bird. Diameter 12 inches. Attributed to New Jersey.



18th century checker diamond salt attributed to Amelung. ex. William Elsholz collection. This salt has a great impression and free of damage, retains original collection sticker. You can find similar examples in museums today.



GREG K. KRAMER & CO., Robesonia, Penn. — Pair of chalk garnitures.

SAMUEL W. FORSYTHE ANTIQUES, Columbus, Ohio — Redware pitcher attributed to William Pecker (1758-1820) of Merrimacport, Mass.



GARTHOEFFNER GALLERY, Lititz, Penn.



Fine Folk Art

Exciting new location at 100 North Main adjacent to Firehouse Antiques



Late 19th, Early 20th Century, Cast Iron Doorstop of Sailor Red, White, Blue, Cream, and Black

Firehouse Antiques Center
open Tuesday—Sunday 10am to 5pm
on Maryland's Eastern Shore, in Galena, MD

The Antique Capital of the Eastern Shore

410.648.5639

firehouseantiquespt@gmail.com

*Exhibiting at The East Hampton Antique Show, July 22, 23, 24
Manchester Collectors Fair, August 10 & 11*



Edgefield Celadon Blaze Koolin Slip Decorated Jar Signed Kadlin Chandler Maker. Height 19 inches Circa 1850

David L. Good
ANTIQUES

7887 State Rt. 177, Camden, Ohio 45311

Phone: (513) 796-2693 • Cell: (937) 478-1378

Antiques In Manchester



PART TWO

Brett Cabral Antiques



Folk Art Miniature Portraits and Birds

An eclectic mix of American Country and Folk Art
brett.cabral@yahoo.com



Miniature Treen Ware



VILLAGE BRAIDER, Plymouth, Mass. — A Nineteenth Century carved and painted whimsical face, possibly used in a carnival or circus.



WILLIAM R. & TERE-SA F. KURAU, Lampeter, Penn. — Liverpool pitcher with the "Apotheosis of Washington" on one side and a United States ship flying the American flag on the other side. This huge pitcher, 11½ inches tall, has traces of the original gold gilt and is in truly superb condition with strong transfers and no repairs. It dates circa 1800 and is one from a collection of historical Liverpool and 1812 pitchers to be offered at the show.



LANGENBACH'S FINE ART & ANTIQUES, Kingston, Mass. — Large painted tin turkey mold, 11¾ by 8½ inches.



J&R Ferris ANTIQUES

Boonville, NY • 315 542-1643
www.jandrfferrisantiques.com • rkentiana@yahoo.com
Exhibiting at Antiques in Manchester & Ellsworth Antiques Show
For information on Rockwell Kent see
www.scottrferris.com

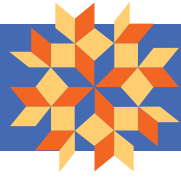
QUIET CORNER ANTIQUES

Bringing A Fresh Colonial Lighting Collection To The Collectors Fair



Michael Rouillard • 860-377-6258
WWW.QUIETCORNERANTIQUES.COM

PART TWO



Antiques In Manchester



RANDI ONA, Wayne, N.J. — Paint-decorated wood basket, rare form, circa 1825.

GREG K. KRAMER & CO., Robesonia, Penn. — Uncle Sam whirligig dating circa 1900-20 from Dover, Del.



9'8x13'10 Serapi Circa 1890



PETER H. EATON ANTIQUES, Newbury, Mass. — A fine Pennsylvania Eighteenth Century high chair made of cherry, with particularly delicate proportions and retaining most of its original red paint. It measures 34 inches high, 20-inch seat height, and came out of a Connecticut private collection.

Wednesday, August 10
Thursday, August 11



LANGENBACH'S FINE ART & ANTIQUES, Kingston, Mass. — Miniature Friesland covered and dated 1771 box with till, measuring 9⁵/₈ by 5³/₈ inches.



SAMUEL W. FORSYTHE ANTIQUES, Columbus, Ohio — Redware jug attributed to John Corliss, Maine, circa 1820-40.

MILES FROM GOLEBROOK TO			
CITY	VIA ROUTE		MILES
AUGUSTA	Me. 2-612-2-02		127
BANGOR	.. 2-6-2		181
BAR HARBOR	.. 2-6-2-1		223
BIDDEFORD	.. 2-6-1		145
CALAIS	.. 2-6-2-1		278
LEWISTON	.. 2-6-12-1		105
OLD ORCHARD	.. 2-6-1		140
PORTLAND	.. 2-6		128
RUMFORD	.. 2-6-2		70
RANGELEY	.. 2-6-16		66
SEBAGO LAKE	.. 2-6-16-302		130
YORK BEACH	.. 2-6-1		166
AVERILL LAKE VT	3-114		14
BURLINGTON	3-2		130
MONTPELIER	.. 3-2		102
NEWPORT	.. 3-105		55
NORTON MILLS	.. 3-114		24
ST. JOHNSBURY	.. 3-2		65
BERLIN	N.H. 2-6-16		52
CONCORD	.. 3-3A-3		149
1 st CONN. LAKE	.. 3		25
2 nd	.. 3		35
3 rd	.. 3		42
CRAWFORD NOTCH	.. 3-302		65
DIXVILLE	.. 2-6		10
ERROL	.. 2-6		22
FRANCONIA NOTCH	.. 3		68
LANCASTER	.. 3		37
LACONIA	.. 3		130
NASHUA	.. 3-3A-3		182
PITTSBURG	.. 3-124		184
PLYMOUTH	.. 3		100
PORTSMOUTH	.. 2-6-16		173
TWIN MOUNTAIN	.. 3		55
WEST STEWARTSTOWN	.. 3		8
WHITEFIELD	.. 3		45

GARVEY RITA ART & ANTIQUES, West Hartford, Conn. — An American directional signboard, painted wood and dating from the Twentieth Century.



QUIET CORNER ANTIQUES, Sterling, Conn. — Scarce cobalt-decorated stoneware gemel, stamped twice "Stedman & Seymour / New Haven."

Ralph & Karen DiSaia
ORIENTAL RUGS

Connecticut's Trusted Resource
for Distinctive Antique Carpets

Oriental Rugs Ltd.

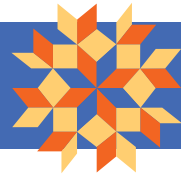
23 Lyme Street, Old Lyme, CT 06371
orientalrugs@snet.net • 860-908-0076

open by appointment



www.orientalrugsLtd.com

Antiques In Manchester



PART TWO

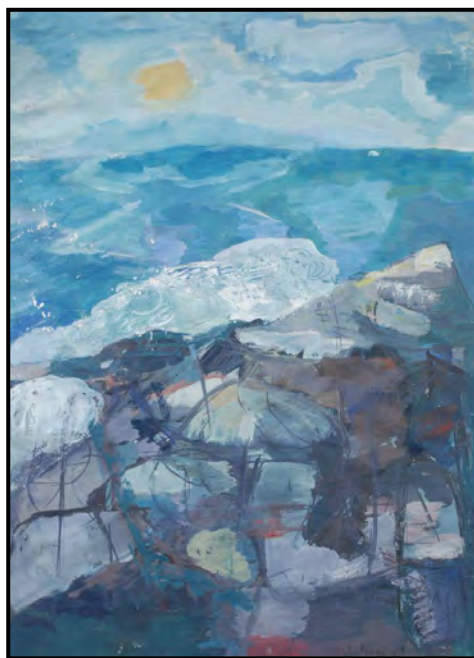


JEFFREY TILLOU ANTIQUES, Litchfield, Conn. — Painted six-board blanket chest from New England, circa 1800-15, in paint-decorated pine. Condition: Original paint decoration, missing interior till and minor imperfections. The chest, having a molded lift top above bootjack ends is embellished with a wonderful shaped, valenced front skirt and is supported by cut-out bracket feet. The mustard yellow and brown putty sponge decorated surface is in excellent condition, and the chest measures 25 inches high, 40 inches wide and 17 3/4 inches deep.



QUIET CORNER ANTIQUES, Sterling, Conn. — Full-bodied horse weathervane, "Smuggler," extremely rare signed Cushing & White.

CHARLES WILSON ANTIQUES & FOLK ART, West Chester, Penn. — A large cast iron American alligator in the original paint, 29 by 5 inches, weighing 26 pounds. It is cast solid with no repaint or repairs and has lifelike details in a quality casting.



WILLIAM R. & TERESA F. KURAU, Lampeter, Penn. — Large folio Currier & Ives lithograph titled "American Winter Scene — Evening." This print has beautiful, rich coloring and is part of a nice selection of Curriers to be shown.

GARVEY RITA ART & ANTIQUES, West Hartford, Conn. — Morris Shulman (1912-1978), "Monhegan," 1947, mixed media on paper, measuring 24 by 16 inches.



CHARLES WILSON ANTIQUES & FOLK ART, West Chester, Penn. — Large pair of horse heads mounted on metal bases for display. They are cast in two parts, measuring 18 by 16 inches, with raised manes, Nineteenth Century, and in old black paint. Examples are found in the book *Horsing Around* catalog #58 and #59, and a copy of the catalog comes with the purchase.



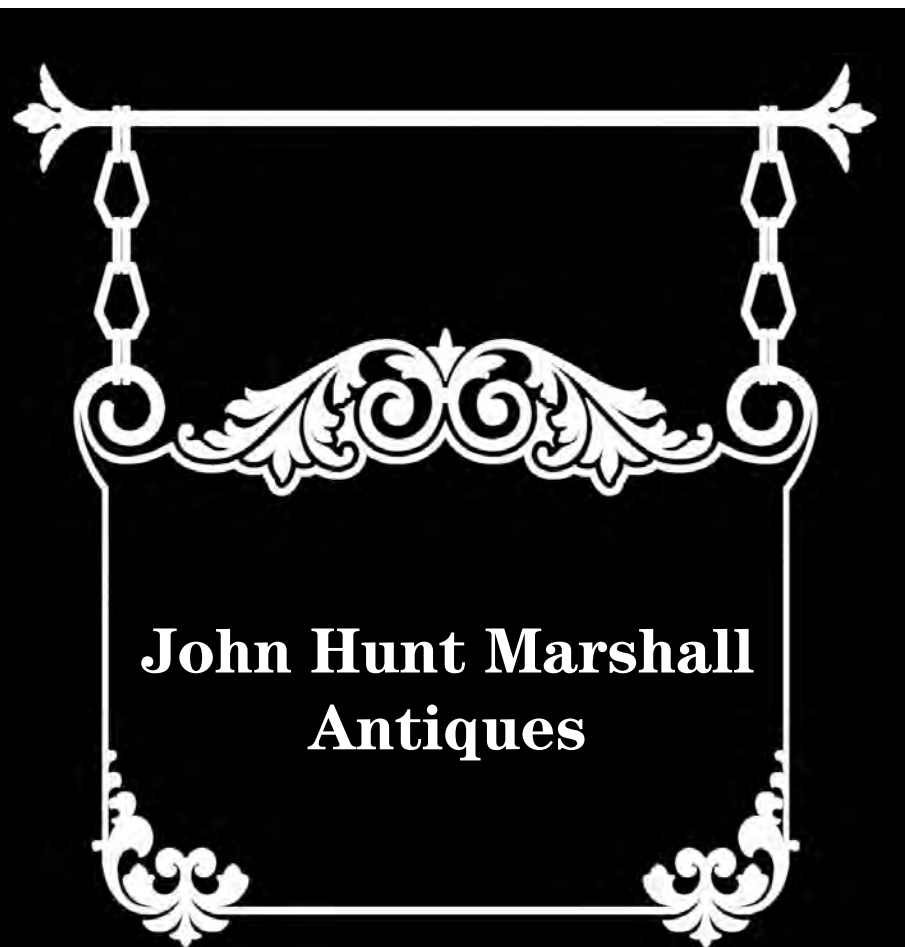
Tombstone Top Wall Pocket Original yellow paint and floral decoration. Ca. 1820 New England origin 12 inches high by 6 5/8 inches wide.

Carlson and Stevenson

Phyllis Carlson Stevenson
and Timothy Stevenson

P. O.Box 1113 Manchester Center, Vermont 05255

802.236.4945 • carlstev@aol.com

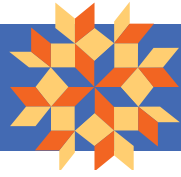


**John Hunt Marshall
Antiques**

28 North Maple Street, Florence, MA
413-519-1715

johnhuntmarshall3@gmail.com

PART TWO



Antiques In Manchester



Daniel and Karen Olson

Dealing in authentic antiques for over 35 years

1445 Route 300

Newburgh, New York 12550

Home Phone: (845) 564-0572

Cell Phone: (914) 474-1736

E-mail: olsonantiques@earthlink.net



18th century oval top New England tea table, old blue repaint.
Top: 18 1/2" x 37 1/2". Height: 25 1/2"



QUIET CORNER ANTIQUES, Sterling, Conn. — Angel Gabriel weathervane dating from the late Nineteenth Century/early Twentieth Century, in gilt and verdigris surface history, displaying the finest lines.

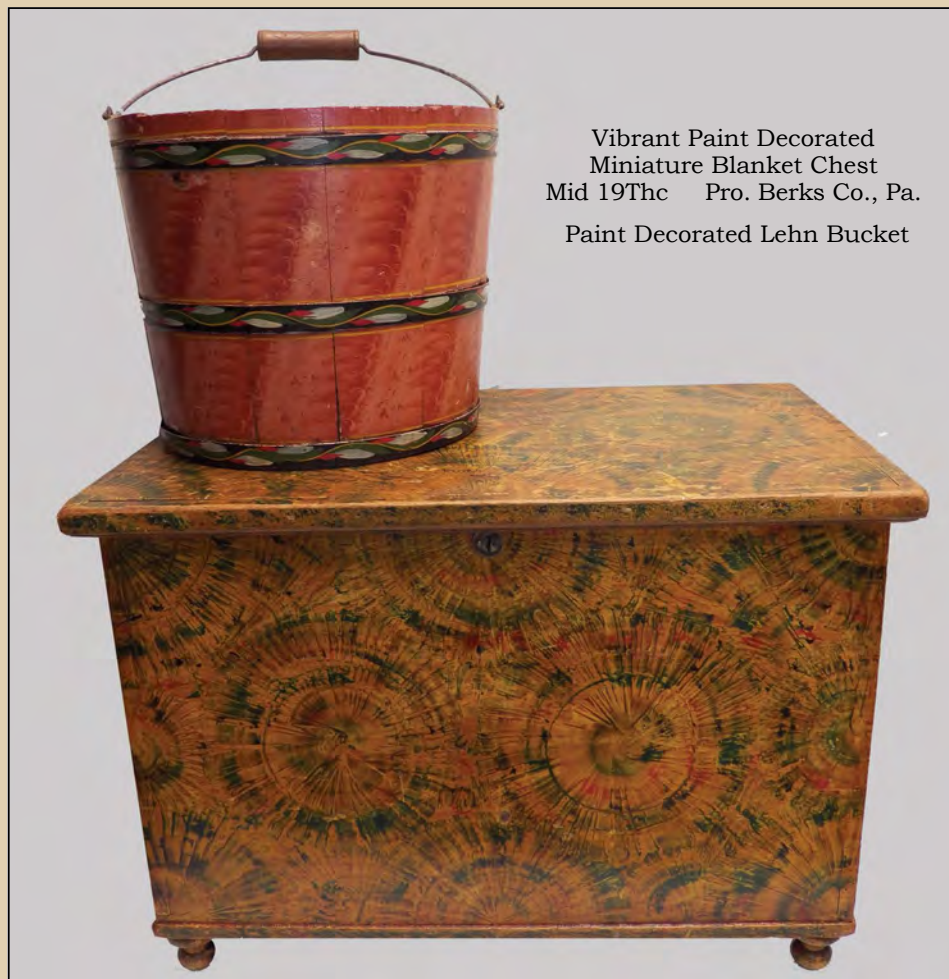


GARTHOEFFNER GALLERY, Lititz, Penn. — Pair of blue painted rocking chairs, circa 1910.

JAMES L. KOCHAN, Wiscasset, Maine — Anton Otto Fischer (1882–1962), “Yacht Under Full Sail,” an oil on canvas measuring 29 by 21 inches.

Greg K. Kramer & Co.

Americana, Folk Art, Period and Painted Furniture



Vibrant Paint Decorated
Miniature Blanket Chest
Mid 19thc Pro. Berks Co., Pa.
Paint Decorated Lehn Bucket

27 W. Freeman Street, Robesonia, PA 19551 • *By Appointment Only* 610-693-3223

WWW.GREGKRAMERANDCO.COM



Antiques In Manchester



PART TWO

Langenbach's FINE ART AND ANTIQUES



Antiques In
Manchester

164 Elm Street, Kingston, MA 02364

781-585-6123 (Day)

781-585-6529 (Evening)

E-mail: langenbach@verizon.net



"Cat, Bat, and Moon" Hooked Rug, c. 1900, 68" x 23 1/2"



MAD RIVER ANTIQUES, LLC, Steve and Lorraine German, North Granby, Conn. — A circa 1940s ship in a bottle with a detailed scene, featuring a ship, village, train and castle.

CHARLES WILSON ANTIQUES & FOLK ART, West Chester, Penn. — This large metal lock trade sign served two functions: as a trade sign and a mailbox for the shop. It has a door and lock on the side, measures 28 by 19 inches and has a bracket on the back where it hung. Mail is inserted in the front. This rare piece dates circa 1920 and has an old painted surface.



WILLIAM R. & TERESA F. KURAU, Lampeter, Penn. — An original gouache and watercolor by Howard Chandler Christie of a Spanish American War scene that is signed as a presentation piece to a friend. This, and many other items in several categories pertaining to American history, will be offered.



Don Olson

Fine American Antiques



Rochester, NY 585-385-9002 • earlypieces@aol.com • www.donolsonantiques.com



Portrait of a Young Woman by JOHN BREWSTER
New England, likely Maine or Connecticut, ca. 1820-1835. Oil on canvas. The brown-eyed lady in half-length, in black dress and white-lace collar with upswept hair held by a tortoise shell comb

Full details on my website: www.donolsonantiques.com

AMERICAN SPIRIT ANTIQUES



Visit us online at www.AmericanSpiritAntiques.com

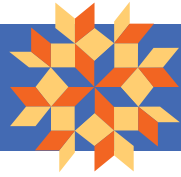
We specialize in:
 High Style Country Furniture • Spatterware • Redware
 Weathervanes • Leather Books • Architectural Elements
 New England Paintings • Period Brass Candlesticks • Tole



*Sheraton Cherry and
Bird's Eye Maple
New Hampshire Card Table.
36" w x 29" h x 17" d*

For more information
about this or other items
Call (816) 223-0277
Ted & Jennifer Fuehr
 PO Box 11152
 Shawnee Mission, KS 66207
ted@americanspiritantiques.com

PART TWO



Antiques In Manchester

Garvey Rita Art & Antiques

322 Park Road • West Hartford, CT 06119
www.garveyrita.com
info@garveyrita.com • 860-983-6563

Anne Arnold (1925-2014)
Pig, carved wood • 11 1/4 x 27 1/2 inches



DOVER HOUSE ANTIQUES, Louisville, Ky. — Lady in green dress, an oil on panel measuring 22½ by 27 inches. It is attributed to Zedekiah Belknap, 1761-1858, New England, circa 1820.



J&R FERRIS ANTIQUES, Boonville, N.Y.

CARLSON & STEVENSON, Manchester Center, Vt. — "Votes for Women," an English carved and painted wood figure, circa 1910, framed in a period shadowbox frame.



GRONNING AMERICAN ANTIQUES

Norman & Mary Gronning - 802-375-6376
normangronning@earthlink.net • www.gronningantiques.com



William & Mary Highboy probably, Boston, MA
Veneered walnut on maple with white pine secondary. Original Brasses

ELLIOTT & GRACE SNYDER

P.O.Box 598, S. Egremont, MA 01258
info@elliottandgracesnyder.com
413-528-3581
www.elliottandgracesnyder.com



A rare 17th c. English needlework picture depicting the Jewish heroine Deborah.

England, 3rd quarter 17th c. In excellent condition.

Antiques In Manchester



PART TWO

*** HISTORICAL STAFFORDSHIRE & RARE COLLECTOR'S ITEMS ***



"Pineapple" English pearlware partial tea service, circa 1815-20

We will be exhibiting at "Antiques in Manchester - The Collector's Fair" and will be bringing a large assortment of Historical Blue Staffordshire, Liverpool pitchers of American interest including George Washington and U.S. Ship designs, Anglo-American ceramics including Whieldon, spatterware, Gaudy Dutch, pearlware, mocha, early American glass, Currier & Ives lithographs and historical prints and engravings, autographs and other pieces of Americana.

A visit to our booth will be worth your while.

William R. & Teresa F. Kurau
 P.O. Box 457, Lampeter, PA 17537
 (717) 464-0731 or (717) 940-5372

www.historicalchina.com | email: lampeter@epix.net

We are always interested in purchasing collections or single items. Give us a call.



20 1/2" dark blue "Capitol, Washington" well and tree platter by Ridgway, circa 1825. This is a fairly scarce and most desirable pattern.



STEPHEN & CAROL HUBER, Old Saybrook, Conn. — Mary Ann Post, at age 14 in 1827, worked this striking family register sampler at Miss Cornwall's School in Glastonbury, Conn. She recorded the marriage of her parents and the births of their children. Her parents and brother's death dates were added later. Mary Ann (1813-1883) was born in Hebron, Conn., daughter of farmer Diodate Post (1786-1860) and Pamela Birge (1792-1860). She married John Buell (b 1812) of the same town and lived on the old homestead. They had four children. "Family Register/ Diodate Post was born/ August 31, 1786/ Pamela Birge/ was born/ Sept 3rd 1792/ Diodate Post/ and Pamela Birge/ were married May 29th 1810/ William A. Post/ July 17th 1811/ Died June 13th 1856/ Mary A. Post/ August 17th 1813/ August 29th 1815/ Sacred to the/ memory of Dio/date Post died apr/11/1860/ Sacred to the memory of Pa/mela Post July/3 1860/M.A.P. 1827." This sampler, silk on linen measuring 18 by 22 inches sight, was exhibited in "With Needles & Brush" at the Florence Griswold Museum, Old Lyme, Conn.



JOAN R. BROWNSTEIN, Newbury, Mass. — Small oil on panel portrait of a woman holding a red book, signed by William Kennedy and dated 1845.



DOVER HOUSE ANTIQUES, Louisville, Ky. — Work table in mahogany, bird's-eye maple and tiger maple measuring 20 1/2 inches wide, 16 1/2 inches deep and 30 inches tall. It is from Massachusetts and dates circa 1820.



VILLAGE BRAIDER, Plymouth, Mass. — An Eighteenth Century child's chair in old finish measuring 24 1/2 inches tall.



DANIEL & KAREN OLSON, Newburgh, N.Y. — American tin document box, circa 1825-35, original swag paint decoration. It measures 11 1/2 inches wide.



*Wednesday, August 10
 Thursday, August 11*

★ ★ CHARLES WILSON ★ ★ ANTIQUES & FOLK ART



CAST ZINC JEWELERS TRADE SIGN IN GILT AND PAINT.

SMALL SIZE 17 3/4" X 11 1/2".

AMERICAN, LATE 19 TH. CENTURY

IN GOOD ORIGINAL CONDITION.

LARGE KICKING MULE TARGET, ATTRIBUTED TO A.J. SMITH CO. GOOD WORKING CONDITION.

C. EARLY 1900'S. TIP OF TAIL MISSING. IN OLD WEATHERED SURFACE.

23 1/4" X 23". MOUNTED ON METAL BASE FOR DISPLAY

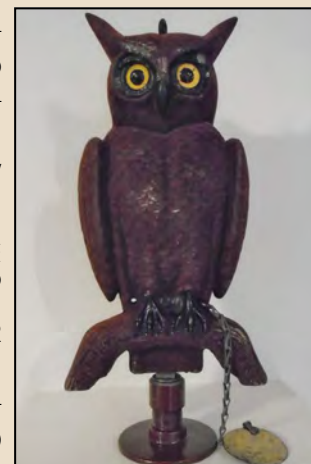


FENCE POST DOUBLE SIDED OWL IN ORIGINAL FLOCKED SURFACE.

LIKE NEW CONDITION.

IT HAS THE RARE SUN REFLECTOR TO ATTRACT CROWS. 15" TALL. SWISHER & SOULES,

DECATUR, IL. PAT PEND. C. 1940-50



Charles J. Wilson • Phyllis R. Wilson • West Chester, Pa. 19380 (610) 431-2025 EMAIL: orvette@comcast.net

VISIT OUR WEB SITE: www.wilsonfolkart.com • CALL AHEAD FOR GALLERY VISIT

PART TWO



Antiques In Manchester



GRONNING AMERICAN ANTIQUES, Shaftsbury, Vt. — A Connecticut writing arm Windsor chair with drawer, bittersweet painted, and dating from the Eighteenth Century.



RANDI ONA, Wayne, N.J. — Watercolor portrait by Jane A. Davis, circa 1830.

thecollectorsfair.com



JAMES L. KOCHAN, Wiscasset, Maine — Pattern 1738 Wall Gun by Richard Brander, circa 1755. This massive, martial gun boasts a 54-inch-long barrel of .98 caliber bore and weighs more than 35 pounds.

James L. Kochan Fine Art & Antiques

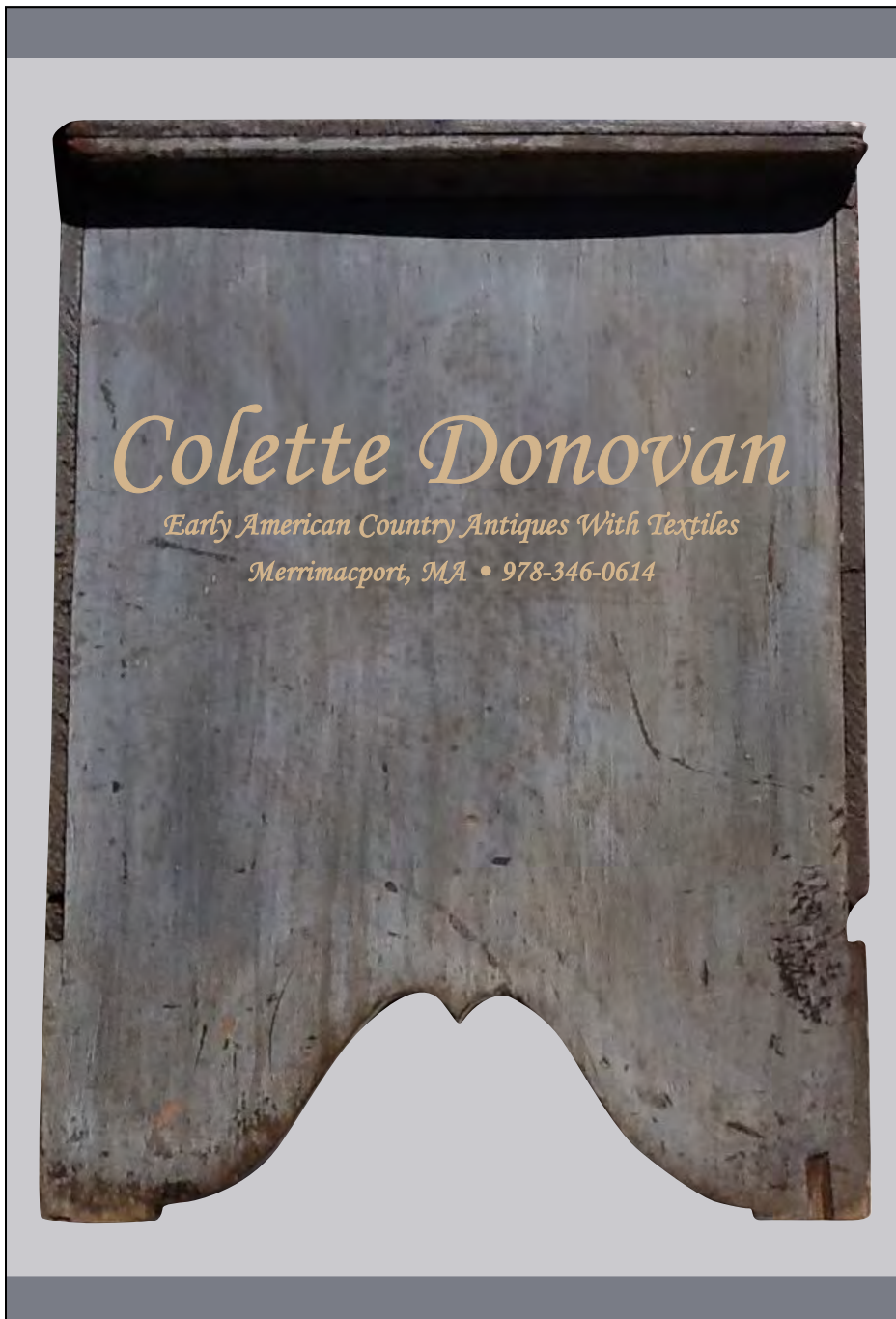


Exhibiting at
Antiques in Manchester
August 10 - 11

Light Infantry Officer, 46th Regiment of Foot, c. 1771

75 Main Street
Wiscasset, Maine 04578
By chance or appointment

(304) 279-7714
info@jameskochan.com
www.jameskochan.com



Colette Donovan

Early American Country Antiques With Textiles
Merrimacport, MA • 978-346-0614

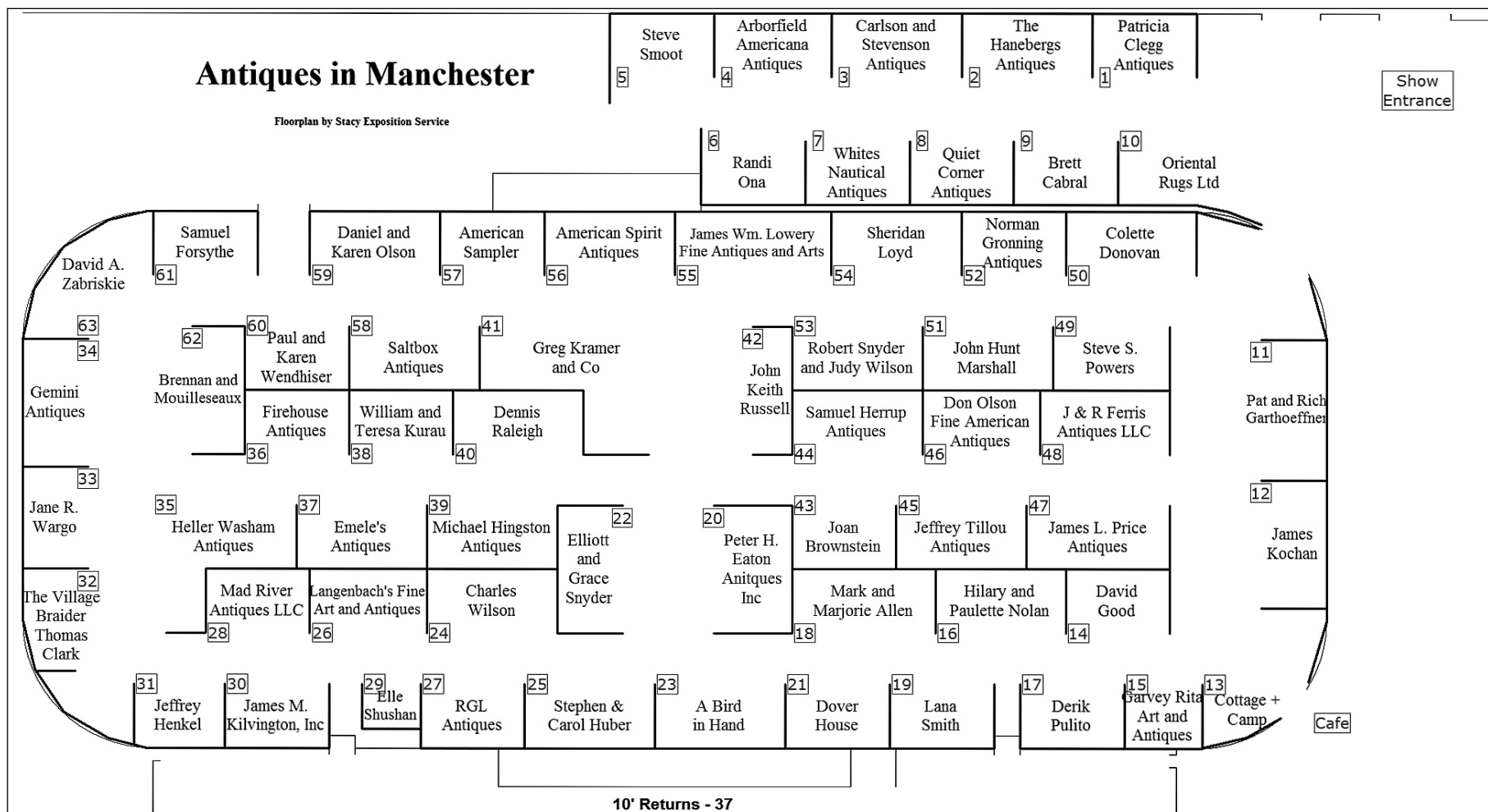
DOVER HOUSE
ANTIQUES

3700 Lexington Road, Louisville, Kentucky
(502) 899-1699 • Open 10 to 5 (Mon. - Sat.)
email: crsmith2002@aol.com

Antiques In Manchester



PART TWO



A Bird in Hand Booth # 23
PO Box 236, Florham Park, NJ 07932
973-410-0077 • Ron@Birdinhand.com
www.abirdinhand.com

Mark and Marjorie Allen Booth # 18
32 Artisans CT, Gilford, NH 03249
603-644-8989 • mandmallen@antiquedelft.com
www.antiquedelft.com

American Sampler Booth # 57
22021 Peach Tree Rd, Boyds, MD 20841
301-972-6250 • smiths@castirononline.com
www.castirononline.com

American Spirit Antiques Booth # 56
PO Box 11152, Shawnee Mission, KS 66207
913-345-9494 • tedatii@aol.com
www.AmericanSpiritAntiques.com

Arborfield Americana Antiques LLC Booth # 4
6061 Arborfield CT, St. Louis, MO 63129-4719
314-566-1887
arborfieldamericanaantiques@gmail.com

Brennan and Mouilleseaux Booth # 62
239 Marsh Rd, Northfield, CT 06778
860-283-2232 • timanddave@optonline.net
www.antiqueseclectic.com

Joan Brownstein Booth # 43
24 Parker Rd, Newbury, MA 01957
978-465-1089 • Joan@americanfolkpaintings.com
www.americanfolkpaintings.com

Brett Cabral Booth # 9
9 Penobscott Ave, Salem, NH 03079
603-548-7844 • brett.cabral@yahoo.com

Carlson and Stevenson Antiques Booth # 3
PO Box 1113, Manchester, VT 05255
802-236-2342 • CarlsonPhyllis1@aol.com

Patricia Clegg Antiques Booth # 1
252 Lake Meade Dr., East Berlin, PA 17316
717-259-9480 • Cleggantiques@verizon.net
www.cleggantiques.com

Cottage +Camp Booth # 13
207 Egremont Plain Rd, N. Egremont, MA 02130
info@cottagecamp.net
www.cottagecamp.net

Colette Donovan Booth # 50
98 River Rd, Merrimacport, MA 01860
978-346-0614
colettedonovanantiques@comcast.net

Dover House Booth # 21
3700 Lexington Rd, Louisville, KY 40207
502-899-1699 • crsmith2002@aol.com

Peter H. Eaton Antiques Inc. Booth # 20
24 Parker St, Newbury, MA 01951
978-465-2754 • peter@petereaton.com
www.petereaton.com

Emele's Antiques Booth # 37
443 Rt. 313
Dublin, PA 18917
215-249-9123
emelesantiques@hotmail.com

J & R Ferris Antiques Booth # 48
3000 Moose River Rd, Boonville, NY 13309
315-542-1643 • rkentiana@yahoo.com
www.scottrferris.com

Firehouse Antiques Booth # 36
PO Box 144, Galena, MD 21631

Samuel Forsythe Booth # 61
147 W. Cooke Rd, Columbus, OH 43214
614-261-7489
sam_forsythe2002@yahoo.com

Gemini Antiques Booth # 34
PO Box 635, Oldwick, NJ 08858
908-823-4049 • LeonWeiss@me.com
www.geminiantiquesltd.com

Pat and Rich Garthoeffner Booth # 11
601 Willow Green, Lititz, PA 17543
717-471-4694
Garthgallery@comcast.net

Garvey Rita Art and Antiques Booth # 15
322 Park Rd, West Hartford, CT 06119
860-233-1730 • info@garveyrita.com
www.garveyrita.com

David Good Booth # 14
7887 State Rtd. 177, Camden, OH 45311
973-478-1378

Norman Gronning Antiques Booth # 52
6645 VT Route 7A, Shaftsbury, VT 05262
802-375-6376
norman Gronning@earthlink.net

The Hanebergs Antiques Booth # 2
5 Boston Post Rd, East Lyme, CT 09333
860-437-1583 • chaneberg@aol.com
www.HanebergsAntiques.com

Heller Washam Antiques Booth # 35
1235 Congress St, Portland, ME 04102
207-773-8288
kimberlywasham@gmail.com
www.antiquesandfineart.com/hellerwasham

Samuel Herrup Antiques Booth # 44
116 Main St., Sheffield, MA 01257
413-229-0424 • herrup@verizon.net
www.samuelherrup.com

Jeffrey Henkel Booth # 31
82 Poor Farm Road, Pennington, NJ 08534
609-818-1192 • henkel.jeffrey@gmail.com

Michael Hingston Antiques Booth # 39
PO Box 4805, Manchester NH, 03188
603-627-4700 • mike@mhingston.com
www.mhingston.com

Stephen & Carol Huber Booth # 25
40 Ferry Rd, Old Saybrook, CT 06475
860-388-6809
Hubers@AntiqueSamplers.com
www.AntiqueSamplers.com

James M. Kilvington, Inc. Booth # 30
PO Box 4666, Greenville, DE 19807
302-734-9124 • jkilv@comcast.net

James Kochan Booth # 12
75 Main St, Wiscasset, ME 04578
304-279-7714 • jameskochan@comcast.net
www.jameskochan.com

Greg Kramer & Co. Booth # 41
27 West Freeman St., Robeson, PA 19551
610-693-3223
Greg@gregkramerandco.com
www.gregkramerandco.com

William and Teresa Kurau Booth # 38
PO box 457, Lampeter, PA 17537
717-464-0731 • lampeter@epix.net
www.historicalchina.com

Langenbach's Fine Art & Antiques Booth # 26
164 Elm St, Kingston, MA 02364
781-585-6529 • langenbach@verizon.net

James Wm. Lowery Fine Antiques and Arts Booth # 55
8279 Ashington Dr., Baldwinsville, NY 13027
315-638-1329 • loweryantiques@twcny.rr.com
www.loweryantiques.com

Sheridan Loyd Booth # 54
2520 Forest St., Joseph, MO 64506
816-364-5027 • SheridanLoydAntiques@gmail.com
www.sheridanoyd.com

Mad River Antiques LLC Booth # 28
13 Gloucester Lane, North Granby, CT 06060
860-653-5733 • madrivanantiques@aol.com
www.madrivanantiques.com

John Hunt Marshall Booth # 51
28 North Maple St, Florence, MA 01062
413-529-9995
johnhuntmarshall3@gmail.com

Hilary and Paulette Nolan Booth # 16
PO Box 583, Falmouth, MA 02541
508-548-0127 • hpnolan@mac.com

Daniel and Karen Olson Booth # 59
1445 Rt 300, Newburgh, NY 14625
845-564-0572 • olsonantiques@earthlink.net

Don Olson Fine American Antiques Booth # 46
47 Lafayette Parkway, Rochester, NY 14625
585-385-9002 • earlypieces@aol.com
www.donolsonantiques.com

Randi Ona Booth # 6
20 Osborne Terrace, Wayne, NJ 07470
973-495-3707 • onaantiques@optonline.net
www.onaantiques.com

Steven S. Powers Booth # 49
360 Court St. #28, Brooklyn, NY 11231
718-625-1715 • steve@stevenspowers.com
www.stevenspowers.com

James L. Price Antiques Booth # 47
PO Box 919, Carlisle, PA 17013
717-448-9279 • Jamie@priceantiques.com
www.priceantiques.com

Derik Pulito Booth # 17
381 Percival Ave, Kensington, CT 06037
860-828-0558 • ddp023@comcast.net

Quiet Corner Antiques Booth # 8
228 Pine Hill Rd, Sterling, CT 06377
860-377-6258 • MichaelRouillard@outlook.com
www.quietcornerantiques.com

Dennis Raleigh Booth # 40
PO Box 745, Wiscasset, ME 04578
734-604-0898 • dgraleigh@myfairpoint.net
www.dennisraleighantiques.com

RGL Antiques Booth # 27
18 Shy Creek Rd, Pittstown, NJ 08867
908-930-5615 • rfranzese@rglantiques.com
www.rglantiques.com

John Keith Russell Booth # 42
PO Box 414, South Salem, NY 10590
914-763-8144 • jrk@jkrantiques.com
www.jkrantiques.com

Saltbox Antiques Booth # 58
769 W. Butler Rd, Sugarloaf, PA 18249
Saltboxantqs@verizon.net

Elle Shushan Booth # 29
1600 Arch St. Suite 1603, Philadelphia, PA 19103
215-587-0000 • Elle@PortraitMiniatures.com
www.PortraitMiniatures.com

Lana Smith Booth # 19
106 Spruce Lane, Louisville, KY 40207
502 452-2534 • lsmithfolk@aol.com

Steve Smoot Antiques and Navaho Textiles Booth # 5
704 Race Rd, Lancaster, PA 17603
717-393-7794 • smootantiq@aol.com
www.1stnline.com

Elliott and Grace Snyder Booth # 22
PO Box 598, S. Egremont, MA 01258
413-528-3581 • Zorvis@bcn.net
www.elliottandgracesnyder.com

Robert Snyder and Judy Wilson Booth # 53
1205 Crestwyck Cricle, Mt. Joy, PA 17552
717-928-6132 • judywilsonme@gmail.com
www.snyderwilsonantiques.com

Jeffrey Tillou Antiques Booth # 45
39 West St/PO Box 1609, Litchfield, CT 06759
860-567-9693 • jeffrey@tillouantiques.com
www.tillouantiques.com

The Village Braider/Thomas Clark Booth # 32
22 Fathom Rd, Plymouth, MA 02360
508-746-9625 • Bruce@villagebraider.com
www.villagebraider.com

Jane F. Wargo Booth # 33
3 Spring Brook Rd, Wallingford, CT 06492
jfwargo@comcast.net

Paul and Karen Wendhiser Booth # 60
PO Box 155, Ellington, CT 06029
860-872-9600 • pkwendhiser@comcast.net

Whites Nautical Antiques Booth # 7
1014 NE 13th St., Gainesville, FL 32601
207-232-6282 • dave@whitesnauticalantiques.com
www.whitesnauticalantiques.com

Charles Wilson Booth # 24
1312 Tulip Dr., Westchester, PA 19380
610-431-2050 • orvette@comcast.net
www.wilsonfolkart.com

David A. Zabriskie Booth # 63
PO Box 172, Lake Placid, NY 12946
518-524-9967 • dazny@yahoo.com

