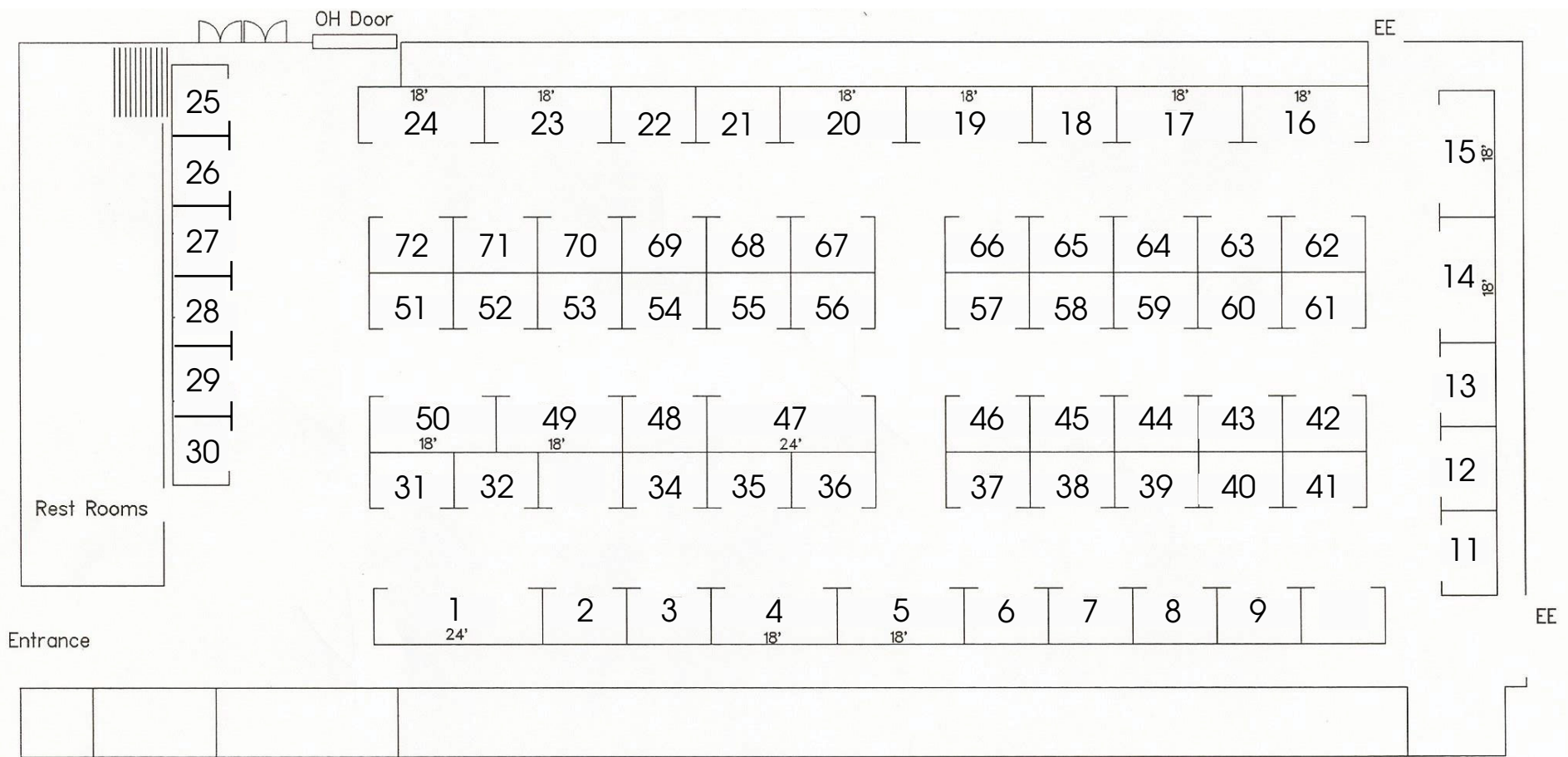


★ ★ ★ AMERICANA CELEBRATION ★ ★ ★
SPECIAL SHOW SECTION

The New American Celebration

Tuesday, August 9, 2016



Everett Arena
Concord, NH

Booth size 12'Wx8'D
Unless Noted

Hatch-Hedrick	1 Rick Fuller	28 Gurley Antiques Gallery	47
Susan and Bill Heider	2 Mike Cafferella	29 American Antiques	48
Country Cupboard	3 Alan Green	29 Bill Powell	49
Mary de Buhr	4 Nancy Cummings	30 Anderson Breish Antiques	50
McClearen Antiques	5 Colleen Kinlock Antiques	31 The Cat Lady	50
American Vernacular	5 Cheryl Anne Reed	32 Denise and Sam Scott	51
Sheila Robbins	6 Sandy Elliott	34 Robert Markowitz	53
Myrleen Harper	7 Gail White	Ficht Antiques	54
Mark and Lynda Suozzi	8 Early American Antiques	35 North Road Antiques	55
Kimberly Kittredge	9 Dianne Halpern	36 Wenham Cross Antiques	56
Joyce Haddad	9 Nadine Pechman	36 Woodsvew Antiques	57
Matt King	11 Elaine Fleming	37 Elisabeth and Roger	59
Matt Ehresman	12 Molly Garland	37 Log House	60
James Cocoman	13 Susan Wirth	37 H and L Antiques	61
Log Cabin Country Primitives	14 Betty Anne Lavalee	38 Don and Betty Jo Heim	62
Al Benting and Jane Jarvis	15 Shirley Quinn	38 Tanning Antiques	63
Dave & Bonnie Ferriss	16 Virginia Brodsky	39 Richard White	64
Country Huzzah	17 Joy Harrington	39 Sasha's Antiques	65
Tom Moser	18 Pumpkin Patch Antiques	40 Horsefeathers Antiques	66
Marc Whittus	19 Emory Goff	40 Country Collectible	
Captains Quarters	20 Susanne Gray	41 Antiques	67
Patricia Stauble	21 Susanne Holder	41 RMS Antiques	68
Tinker's Wagon Antiques	22 Vee Kausel	41 David and Becky	69
Walker Homestead	22 Blue Dog Antiques	42 Pantry Box Antiques	70
Sherman Alden Antiques	24 Louise Hardie	44 William Gittes	71
Curiosity Shop	25 Crows Feet Antiques	45 Bjorn Boresson	71
Antiques at Hillwood Farm	26 Pillars Antiques	Richard Kenney	72
Beth Pulsipher	26 and Decorative	47 Chris Constadine	72

ANTIQUÉ SHOW



The Deerfield Antique Show Has Moved To
The Douglas Everett Arena
TUESDAY - AUGUST 9th

The Everett Arena is located at 15 Loudon Road in Concord, NH.
We are closer to the Antiques Week action and all under one roof.
It's the same Great show with the same Great Dealers.
Only the Best Early American Art, Antiques and Accessories.

EARLY BUYERS: 8 AM - 10 AM \$20.00
GENERAL ADMISSION: 10 AM - 4 PM \$10.00

DIRECTIONS FROM DOWNTOWN MANCHESTER:
Take I-93 to Exit 14. Go right on Loudon Road/NH 9.
Go less than a quarter mile, we are on the left.

NAN GURLEY ANTIQUE SHOWS

536 North Road/Parsonsfield, ME 04047

Managed by Peter Mavris

————— (207) 625-5028 —————

★ ★ ★ AMERICANA CELEBRATION ★ ★ ★
SPECIAL SHOW SECTION

Welcome To Nan Gurley's New Americana Celebration Antique Show

I am pleased to announce the new antique show inspired by and dedicated to my late wife Nan Gurley.

One day last Autumn Nan and I were sharing our thoughts about our Deerfield, N.H., show.

We talked about how nice it would be if we could have the show at the Douglas Everett Arena in Concord, N.H., instead. We had been having our annual spring in New Hampshire show there at the end of April for the past few years and had found the facility well suited for antique shows. It had a more conve-

nient location to all the other events, had ample parking, and great access for the dealers to load and unload into and out of the show, but unfortunately it was not available during Antiques Week in New Hampshire.

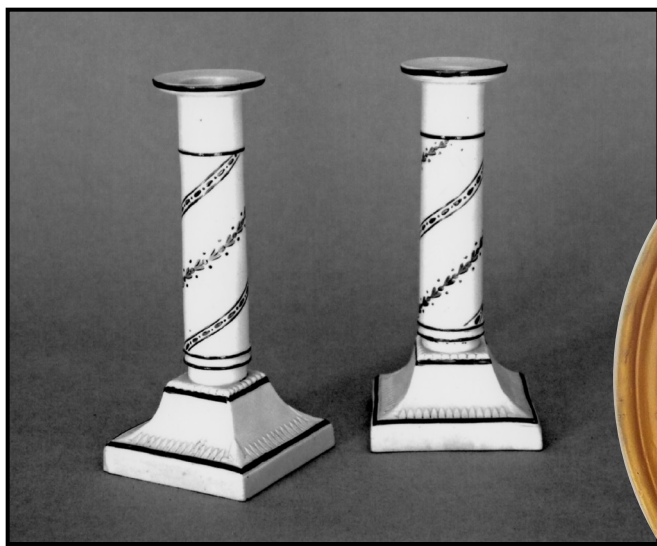
The very next day a good friend informed us that he had learned that it might be available. It did not take a moment for us to call and learn that this was so, and we immediately secured it for the needed date. Nan soon shared with me how she had always wanted to have a walled show and that the new event, being part

of Antiques Week, would be the perfect show to make that change.

The new show will be under one roof with everyone interacting in the same space, enjoying the same party.

Unfortunately, our dear Nan is no longer with us, but she will always be there in spirit. I welcome you to join us all at the many more to come Nan Gurley antique shows.

*Thank you,
Peter Mavris*



J.S. COCOMAN ANTIQUES, Glenmont, N.Y. — Pair of Felspathic stoneware candlesticks, probably by Chatham & Wooley, circa 1810, and measuring 7½ inches high with a 3³/₁₆-inch-square base.

WENHAM CROSS, Topsfield, Mass.



PILLARS ANTIQUES & DECORATIVE ARTS, Freeport, Maine and GURLEY ANTIQUES GALLERY, Scarborough, Maine

Tuesday, August 9th

MARY de BUHR



Chair table, pair of country Queen Anne chairs, beehive bowl and 6 arm wood chandelier, all in early paint

AMERICANA CELEBRATION
Douglas Everett Arena, CONCORD, NH
TUESDAY, AUGUST 9, 8-4



630-985-9449
mdbantiques.com

RMS ANTIQUES

Robert and Mary Schenck
American Furniture & Decorative Arts
Settlement thru 19th C.



Late 18th C. stretcher table, 54" x 33½" x 28½", red wash base



18th C. canted double tombstone wall box in old paint



Hooked rug, early 20th C., 26" x 54"

908-268-9025
RMSantiques@gmail.com

★ ★ ★ AMERICANA CELEBRATION ★ ★ ★
SPECIAL SHOW SECTION



MARY de BUHR, Downers Grove, Ill. — Small shelf with early leather books, two tiny storage boxes, fat early tallow candle and soapstone candle ring.



H&L ANTIQUES, Princeton, N.J. — New England hooked rug, circa 1920, measuring 30 by 48 inches.



JINNY BRODSKY, York, Maine — Wood body French fashion doll and a 1784 miniature sampler.

Tuesday,
August 9th

PAT HATCH ANTIQUES, Harvard, Mass. — A late Nineteenth Century velvet face golliwog, all original, measuring 15 inches. It is one of the best.



RMS ANTIQUES, Robert & Mary Schenck, Phillipsburg, N.J. — Country in old surface.

H & L Antiques



Antiques

- American Furniture
- Early Lighting
- Iron
- Treenware
- Accessories

Helen & Larry Bryan
Princeton, NJ 08540

www.hlantiques.com
hlantiques@icloud.com
Telephone: (732)-951-2288
Cell: 732-690-2116

Emily and Irma Lampert
Wenham Cross Antiques



One Hill Street, Topsfield, MA 01983
978-887-2823

emilylampert@yahoo.com • irmalampert55@yahoo.com



Meet us at the show!



CHIPPENDALE PAINTED HANGING
CORNER CUPBOARD
ORIGINAL SURFACE and HARDWARE
1760-1800
PENNSYLVANIA

With a shaped pediment above a molded cornice over a rectangular double raised-panel door with wrought iron rat-tail hinges and wrought iron escutcheon opening to a single shelf above a molded drawer and applied frontal base molding. Dimensions: 41 1/4" h x 26" w x 16 1/2" d.

For Additional Photos See Website www.hlantiques.com

★ ★ ★ AMERICANA CELEBRATION ★ ★ ★
SPECIAL SHOW SECTION



H&L ANTIQUES, Princeton, N.J. — American Queen Anne cherry and chestnut armchair, circa 1740.

MARY de BUHR, Downers Grove, Ill. — Uncommon set of five drawers with three sections under lift top, together with a hanging candle/herb dryer.



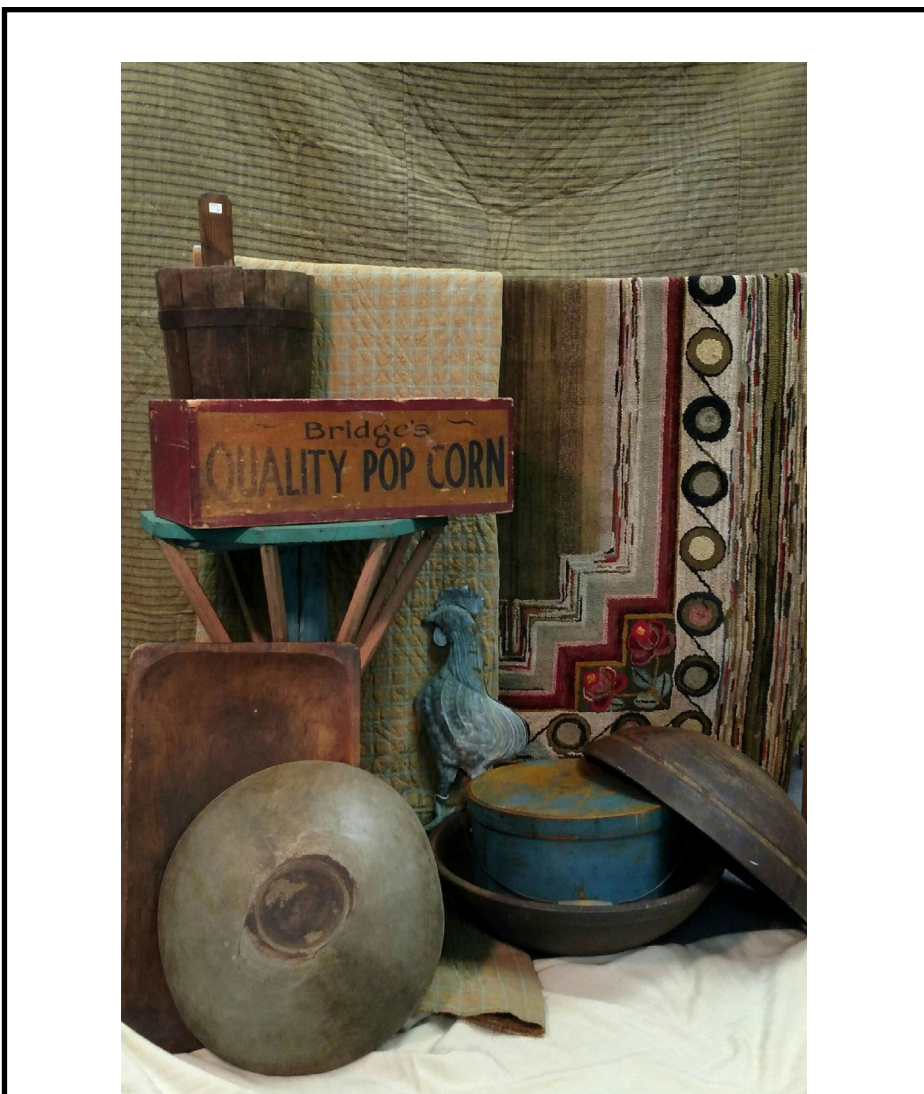
H&L ANTIQUES, Princeton, N.J. — A wrought iron hanging candle light with rush holder, Eighteenth Century, 21 inches high; a wrought iron four-arm chandelier, Eighteenth Century, 19 inches high; Peerman Eighteenth Century 13 inches high; skimmer, copper and iron, Nineteenth Century, 23¼ inches long; and an iron adjustable pan lamp, Eighteenth Century, 16½ inches high.



PILLARS ANTIQUES & DECORATIVE ARTS, Freeport, Maine and GURLEY ANTIQUES GALLERY, Scarborough, Maine



RMS ANTIQUES, Robert & Mary Schenck, Phillipsburg, N.J. — Selection of fireplace iron.



Rachel Gurley
GURLEY ANTIQUES GALLERY

581 US Route 1 - Scarborough, Maine 04074
(207) 396-4255

rachelgurley@gmail.com • www.gurleyantiquesgallery.com

Jinny Brodsky



Two silver nipple straws by Philadelphia makers P. Garrett (1811) and John McMillin 1814.
Two silver pap boats and a English silver medicine spoon.

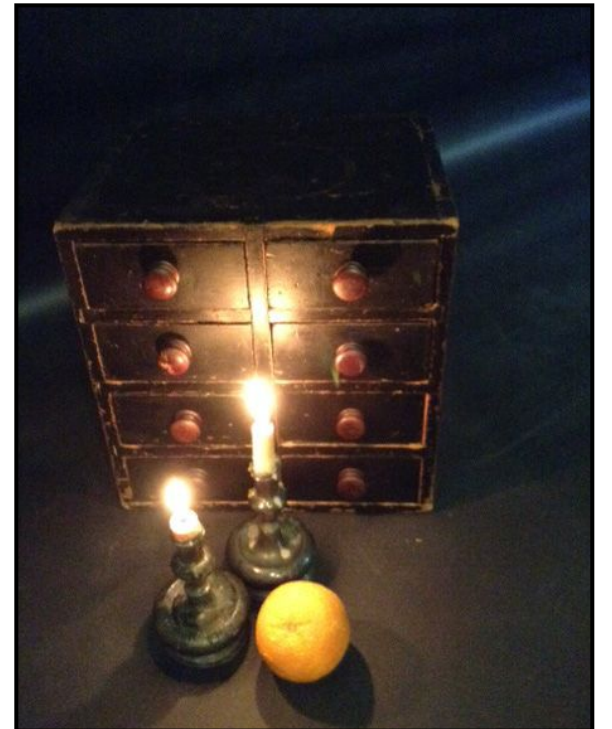
★ ★ ★ AMERICANA CELEBRATION ★ ★ ★
SPECIAL SHOW SECTION



RMS ANTIQUES, Robert & Mary Schenck, Phillipsburg, N.J. — Large Japanned candle box, six-board chest in old red and churn in yellow paint.



PAT HATCH ANTIQUES, Harvard, Mass. — Two antique wooden glove forms with attached thumbs, 17½ by 19 inches, shown on professional stands.



MARY de BUHR, Downers Grove, Ill. — Painted eight-drawer apothecary illuminated by a small pair of Seventeenth Century pewter candlesticks. Stone orange is pictured to reference size.



PAT HATCH ANTIQUES, Harvard, Mass. — Chalk cat with hollow body but closed base, 10 inches tall, circa 1870-80.



PILLARS ANTIQUES & DECORATIVE ARTS, Freeport, Maine and GURLEY ANTIQUES GALLERY, Scarborough, Maine

Americana Celebration
The Deerfield Antique Show
Has Moved To
The Douglas Everett Arena
Tuesday, August 9th

Faces of Folk Art Antique Cloth Dolls



Cloth doll with ink drawn face C. 1890, 18"



Painted face 19th C. cloth doll, 25"



Black wool cloth doll C. 1900, 23"

J. S. COCOMAN ANTIQUES

Glenmont, NY
518-767-9232
cocomanjp2@nycap.rr.com



Come join us at the Americana Celebration
in lovely Concord, NH

Pat Hatch • 978 456 7829
WWW.COUNTRYANDSHAKERANTIQUES.COM
HOPE TO SEE YOU AT CONCORD, NH
Americana Celebration
TUESDAY, AUGUST 9

WE WILL BE THE FIRST BOOTH ON THE RIGHT
WHEN YOU COME IN.
We will have oriental rugs, bells and guy stuff too!