

THE ADA/HISTORIC DEERFIELD ANTIQUES SHOW

SPECIAL SHOW SECTION

THE 2015 ADA/ HISTORIC DEERFIELD ANTIQUES SHOW

COLUMBUS DAY WEEKEND

OCTOBER 10TH & 11TH

SATURDAY 11-6, SUNDAY 11-5

DEERFIELD ACADEMY, DEERFIELD, MA

CONNECTICUT

Kirtland H. Crump, LLC
Stephen & Carol Huber
Nathan Liverant and Son, LLC
Mad River Antiques, LLC
Oriental Rugs Ltd.
Thomas Schwenke, Inc
Lewis W. Scranton
Jeffrey Tillou

NEW HAMPSHIRE

Hollis Brodrick
Russack & Loto Books, LLC
Jonathan Trace

DELAWARE

James M. Kilvington, Inc

PENNSYLVANIA

The Philadelphia Print Shop
Greg K. Kramer & Company

KANSAS

American Spirit Antiques

NEW JERSEY

A Bird in Hand
SAJE Americana

OHIO

David Good

MASSACHUSETTS

Joan R. Brownstein
Pam & Martha Boynton
Paul J. DeCoste
Colette Donovan
Peter H. Eaton, Inc
Samuel Herrup
Scott Bassoff, Sandy Jacobs
Gary Langenbach
John Hunt Marshall
Hilary & Paulette Nolan
Elliott & Grace Snyder

MAINE

Jewett-Berdan Antiques
Dennis Raleigh

NEW YORK

Richard Axtell
Don Olson
Steven S. Powers
John Keith Russell

VERMONT

Jordan Antiques & Antiquarian Books
Jeff & Holly Noordsy
Stephen-Douglas

Show Sponsor

NEUBERGER BERMAN

FOR MORE DETAILS
WWW.ADADEALERS.COM



ANTIQUES DEALERS' ASSOCIATION OF AMERICA, INC. PO Box 218, NORTHWOOD, NH 03261 • 603-942-6498

ANTIQUES

ABA Antiques & Fine Art

AMERICAN FINEART

THE ADA/HISTORIC DEERFIELD ANTIQUES SHOW

SPECIAL SHOW SECTION



BIRD IN HAND ANTIQUES, Florham Park, N.J. — This stoneware wax sealer with a cobalt stenciled pear was made by the Palatine Pottery Co., in Palatine, W.Va.; has no chips cracks or repairs, measures 10 inches high and dates circa 1875.



DENNIS RALEIGH, Wiscasset, Maine — Fruit theorem on velvet, circa 1830.



THOMAS SCHWENKE, Woodbury, Conn. — American portrait miniature, Norwich, Conn.



AXTELL ANTIQUES, Deposit, N.Y. — Hanging candle box with drawer in wonderful yellow paint, circa 1810.



DAVID L. GOOD ANTIQUES, Camden, Ohio — Exceptional Dunlap candlestand with historic surface ex G.W. Samaha, Milan, Ohio; ex James O. Keene; Sotheby's New York, January 16, 1997, Lot 81.



Don Olson
Fine American Antiques
 Rochester, NY 585-385-9002
 earlypieces@aol.com
www.donolsonantiques.com



Pennsylvania Birth Fraktur Dated 1805 'Samuel Moffly'
 Berks County, Pennsylvania. Watercolor on laid paper. Beautifully composed, colors remain bright and saturated.

Full details on my website:
www.donolsonantiques.com

STEPHEN & CAROL
HUBER
America's Preeminent Source for Girlhood Embroideries



Graphic silk thread on green linsey-woolsey sampler worked by 13 year old Patty Fowler in 1798 while attending school in Salem, MA. Patty married John Radford in 1802. 20 1/2 x 19 1/2 inches sight.

ALWAYS INTERESTED IN PURCHASING FINE NEEDLEWORK

**FORTY FERRY ROAD, OLD SAYBROOK
 CONNECTICUT 06475**

TEL 860.388.6809 • Hubers@AntiqueSamplers.com
www.AntiqueSamplers.com

THE ADA/HISTORIC DEERFIELD ANTIQUES SHOW

SPECIAL SHOW SECTION

Plan A Weekend Getaway Antiquing At The ADA/Historic Deerfield Antiques Show

Columbus Day Weekend Is The Perfect Time

DEERFIELD, MASS. — Art and antiques lovers looking for a great getaway idea during the peak fall foliage season should look no further than a weekend in historic Deerfield for the ADA/Historic Deerfield Antiques Show. Set for Columbus Day weekend, October 10–11, this annual show brings together some of the nation's finest dealers featuring the best of Eighteenth and Nineteenth Century American art, antiques and design.

Considered by both serious and casual collectors to be one of the year's most important shows, on view and for sale will be remarkable objects that will improve the quality of any collection and the look of any home. Surrounded by the colors of the Deerfield hills in autumn, the setting is widely acknowledged to be the most beautiful, with numerous options to dine, stay and play throughout the weekend.

Visitors to the antiques show will also have the opportunity to visit Historic Deerfield, an authentic Eighteenth Century New England village where they can explore historic museum houses and world-famous collections of early American furniture, ceramics, textiles, metalwork and crafts. A ticket to the antiques show also includes admission to Historic Deerfield's Flynt Center of Early New England Life, a state-of-the-art exhibition space showcasing a portion of the museum's collections and the Apprentice's Workshop at Dwight House.

Explore the area further with visits to great restaurants and shops, from nearby Shelburne Falls and its picturesque downtown to the museums and theatres of the Berkshires. Spend the weekend exploring everything western Massachusetts has to offer and discover an antique treasure along the way.

The show hours are Saturday, 11 am to 6 pm, and Sunday, 11 am to 5 pm. The show will be held at the Deerfield Academy hockey rink. Special events on Saturday, October 10, include two book signings from 2:30 to 4:30 pm, featuring Philip Zea, president, Historic Deerfield, who will sign copies of the recently

released *Rich and Tasty: Vermont Furniture to 1850*, and Gail and Rich Mellin, owners of Mellin's Antiques and acknowledged experts in the ceramics field, who will sign their new publication *Collecting Canton: In Pursuit of the Best*.

Show admission is \$15 (free for members of Historic Deerfield), and includes entrance to the Flynt Center of Early New England Life as well as the Apprentice's Workshop at Dwight House. Show attendees age 35 and under will receive free admission to the show on Sunday, from 1 to 5 pm. ID is required to receive free admission. Show information is available online at www.historic-deerfield.org and at www.adadealers.com.

The 2015 ADA/Historic Deerfield Antiques Show is generously supported by sponsor Neuberger Berman.

About The Antiques Dealers Association Of America, Inc

The Antiques Dealers Association of America, Inc (ADA) was established in May, 1984, as a nonprofit trade association. Its major objective is to make more professional the business of buying and selling antiques. Membership is composed of professional antiques dealers who are dedicated to integrity, honesty and ethical conduct in the antiques trade. All members guarantee their merchandise in writing.

About Historic Deerfield, Inc

Historic Deerfield, Inc is dedicated to the heritage and preservation of Deerfield, Mass., and the Connecticut River Valley. Its museums and programs provide today's audiences with experiences that create an understanding and appreciation of New England's historic villages and countryside.

NATHAN LIVERANT AND SON LLC ANTIQUES



New York & Savannah Packet
Brig *Exact*,
Captain Joseph Bartram,
by J.F. Huger, B.P. Conn, 1842
The American merchant brig
Exact headed out to sea.
By Jurgen Frederick Huger
(American, 1809-1878).
Dated 1842.
In original condition,
including gilt frame.



168 SOUTH MAIN STREET
P.O. BOX 103, COLCHESTER, CT 06415
(860) 537-2409 FAX (860) 537-0577

mail@liverantantiques.com
www.liverantantiques.com



THE ADA/HISTORIC DEERFIELD ANTIQUES SHOW

SPECIAL SHOW SECTION



STEPHEN & CAROL HUBER, Old Saybrook, Conn. — Judgment of Paris, English, mid -Seventeenth Century needlework picture. The Judgment of Paris was a contest between the three most beautiful goddesses of Olympos or Olympus for the prize of a golden apple addressed "To The fairest." The story begins at the wedding of Peleus and Thetis to which all of the gods were invited, all except Eris (the goddess of discord). When she appeared at the festivities, she was turned away, and in her anger cast a golden apple amongst the assembled goddesses addressed "To The Fairest." Three goddesses Aphrodite, Hera and Athena laid claim to the apple. Zeus (the king of the gods) was asked to mediate and he commended Hermes (the Olympian god) to lead the three goddesses to Paris of Troy to decide the issue. The three goddesses appeared before the shepherd prince, each offering him gifts or favors. Hera said if she were chosen fairest of all women, she would make him king of all men: Athena promised him a victory in war: and Aphrodite promised him Helene in marriage. So he chose Aphrodite. The subsequent abduction of Helene led directly to the Trojan War and the fall of Troy. This beautiful needlework rendition of the story pictures Paris with the three goddesses, along with a rabbit, dog, stag, lion, peacock, oxen, birds, frog, flowers, cityscape, etc. It is silk on linen, 18 by 22½ inches framed.



BIRD IN HAND ANTIQUES, Florham Park, N.J. — Flying blackduck decoy facing right white by Tuveson Manufacturing Co., St James, Minn., retaining the original paint and dating circa 1927.



MAD RIVER ANTIQUES, North Granby, Conn. — An early Nineteenth Century candlestand with strong tiger maple figuring.



DAVID L. GOOD ANTIQUES, Camden, Ohio — Pilgrim Century mirror, ex Oliver Williams, original furnishing of the Witch House, Pigeon Cove, Mass.

STEPHEN • DOUGLAS

Rockingham, Vermont

Walpole, New Hampshire

802-463-4296



Albany County, New York painted blanket chest in original blue paint and decorative Germanic motifs - dated 1815.

A Bird In Hand Antiques

Florham Park, New Jersey



Tel. (973) 410-0077
 antiques@abirdinhand.com
 www.ABirdInHand.com



Rare Three Puffins
 Silk Stocking mat from the Grenfell Mission,
 Label attached.
 21 ¾" X 14 3/8" Circa: 1930s



Stoneware-Decoys-Painted Furniture-Grenfell Mats-Folk Art

THE ADA/HISTORIC DEERFIELD ANTIQUES SHOW

SPECIAL SHOW SECTION

Jewett - Berdan



A charming folk portrait of a young boy oil on canvas attributed to Joseph Goodhue Chandler, circa 1845, Western Ma. Original grain painted frame.

Thomas J. Jewett

15 Hopkins Hill Road
Newcastle, Maine 04553

Charles P. Berdan



(207) 563-3682
jewett-berdan@roadrunner.com
www.jewettandberdan.com

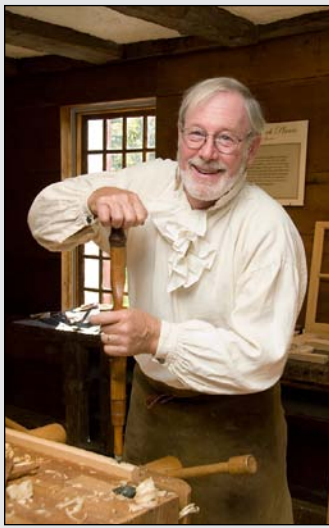


THE ADA/HISTORIC DEERFIELD ANTIQUES SHOW

SPECIAL SHOW SECTION

Explore Historic Deerfield Columbus Day Weekend

Visitors to the ADA/Historic Deerfield Antiques Show have the opportunity to explore Historic Deerfield, from touring museum houses to getting up close to the world-class collections on view at the Flynt Center of Early New England Life. A ticket to the antiques show includes admission to the Flynt Center and the Apprentice's Workshop at Dwight House, where demonstrations on ceramics, woodworking and textiles can be viewed.



Historic trade demonstrations on Columbus Day weekend include tinsmithing with William McMillen, architectural woodworking with Ted Ingraham, gunsmithing with Leonard Day, and Eighteenth Century cabinetmaking with Craig Farrow. Historic Deerfield's open hearth cooks will be demonstrating in the 1784 Hall Tavern kitchen, showing how dishes featuring apples, pumpkins and corn, the "Foods of the Fall



Harvest," were made in early New England in autumn. Visitors can also learn about the science of historical archaeology with the "Archaeology Lab" program at the History Workshop. Visitors will help clean, sort and identify artifacts; learn about soil and explore a "shoe box" dig; and make clay marbles based on archaeological finds to take home. Note that some programs may require additional admission.



Historic Deerfield has a well-deserved reputation for its masterworks in New England furniture, early American metalwares, textiles, needlework and costume, English and Chinese ceramics, paintings and prints. The Flynt Center of Early New England Life, which opened in 1998, provides a 27,000-square-foot, state-of-the-art facility containing climate-controlled exhibition galleries, visible storage area

and collection storage for the museum's most sensitive and highly valued collections. The Flynt Center is open for self-guided tours daily during the regular season from 9:30 am to 4:30 pm.

Currently on view at the Flynt Center of Early New England Life is "Greek Gods, Roman Ideals: Neoclassicism and Style in Early America," a new exhibition in the lobby on view until February 14. The exhibition highlights the new

design style that developed in mid-Eighteenth Century France and England, referred to today as neoclassicism, which harkened back to the shapes and ornaments of classical Greece and Rome. It eventually took hold in the United States as the Federal style, and can be seen in everything from architecture to furniture, emphasizing clean, geometric lines and more delicate neoclassical detailing. Characteristic motifs of the neoclassical style are frequent use of swags, festoons, ribbons, beading, vases and urns. Neoclassical forms and decoration will be seen in objects in the exhibition that range from ceramics and card tables to needlework pictures and prints.

Historic Deerfield is celebrating the 50th anniversary of the Helen Geier Flynt Textile Gallery in 2015, and the Flynt Center's permanent exhibition "Celebrating the Fiber Arts" includes a new rotation of items including a new quilt and coverlet display featuring the very first item in the textile collection, a whole cloth quilt, circa 1800. The other permanent exhibition, "Into the Woods: Crafting Early American Furniture," gives visitors the opportunity to learn about antique furniture from the inside out, and gain a new understanding of the materials and craftsmanship that



went into the creation of these spectacular objects through graphics, before-and-after views of conservation treatments, and innovative "exploded view" display techniques.

A small exhibition area in the lobby of the Flynt Center features "Engraved Powder Horns from the French and Indian War and the American Revolution: The William H. Guthman Collection." One of the finest assemblages of this indigenous and unique American art form ever presented, these 75 powder horns offer a wealth of documentary information about the original owners and carvers who created them.

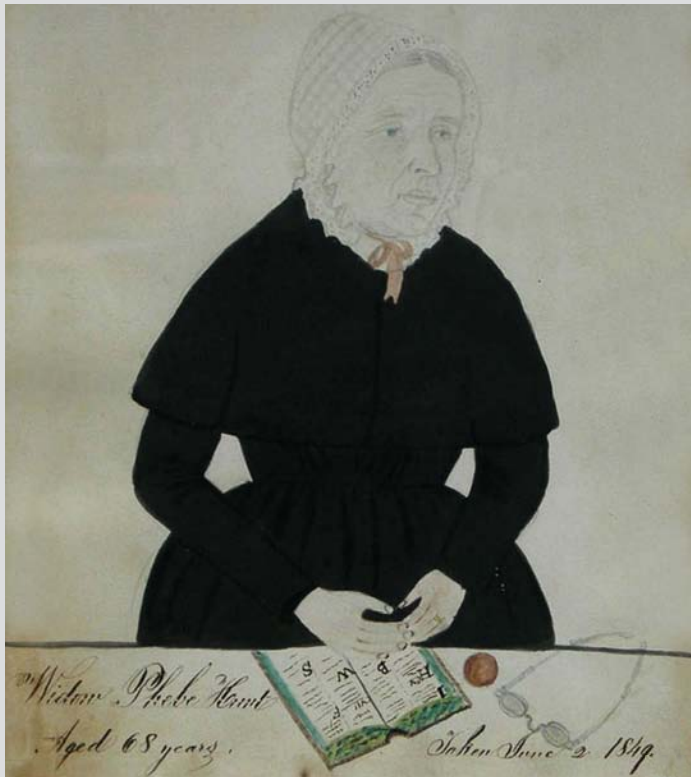


THE ADA/HISTORIC DEERFIELD ANTIQUES SHOW

SPECIAL SHOW SECTION

JOAN R. BROWNSTEIN • AMERICAN FOLK PAINTINGS

PETER H. EATON, INC • AMERICAN FURNITURE



**RARE DOUBLE-SIDED PORTRAIT OF THE
'WIDOW PHOEBE HUNT
AGED 68 YEARS
TAKEN JUNE 2, 1849'
ATTRIBUTED TO J. A. DAVIS**

Both sides have inscription panels beneath the watercolor, ink, and pencil portraits. In one, the sitter is shown seated in a Windsor arm chair. In the other, she is shown with a book, her eye glasses, and an apple. Both portraits are sensitively rendered. The blue shadowed version shows an intensity seldom seen in folk portraiture. Period two-sided framing with conservation mounting.

A RARE AND PERHAPS UNIQUE BANISTER-BACKED ARMCHAIR WITH UNUSUAL ARCHED CREST, MOLDED BANISTERS, BEAUTIFULLY SCROLLED ARMS, TURNED STRETCHERS AND SPANISH FEET. POPLAR, MAPLE, AND ASH IN AN OLD BLACK PAINT WITH INCISED AND GILDED DECORATION. PROBABLY SALEM/IPSWICH, C.1720. 50 1/2" HT, 17" SEAT HT.

THIS CHAIR IS PICTURED IN *THE MAGAZINE ANTIQUES*, AUGUST, 1968, WHEN IN THE LARSON COLLECTION, AND PICTURED ON PAGE 330 OF *NEW ENGLAND FURNITURE-THE COLONIAL PERIOD*, BY BROCK JOBE (1984)



JOAN R. BROWNSTEIN
(978) 465-1089 WWW.AMERICANFOLKPAINTINGS.COM
JOAN@AMERICANFOLKPAINTINGS.COM

PETER H. EATON
(978) 465-2754 WWW.PETEREATON.COM
PETER@PETEREATON.COM

THE ADA/HISTORIC DEERFIELD ANTIQUES SHOW

SPECIAL SHOW SECTION



DON OLSON FINE AMERICAN ANTIQUES, Rochester, N.Y. — Early folk art Parcheesi gameboard, probably New England, Nineteenth Century, in rich polychrome paint with exceptional surface. It measures about 19³/₈ inches square.



THOMAS SCHWENKE, Woodbury, Conn. — Rare Federal carved and gilded overmantle mirror.



DENNIS RALEIGH, Wiscasset, Maine — Handmade folk art hooked rug, second quarter of the Twentieth Century.

AXTELL ANTIQUES, Deposit, N.Y. — Double handle rolling pin with rare figural heart handle, circa 1800.

DAVID L. GOOD ANTIQUES, Camden, Ohio — An early Eighteenth Century miniature mirror in the original black and gold surface, Connecticut, 6¹/₂ inches high.



Dennis Raleigh
American Antiques & Folk Art
Wiscasset, Maine

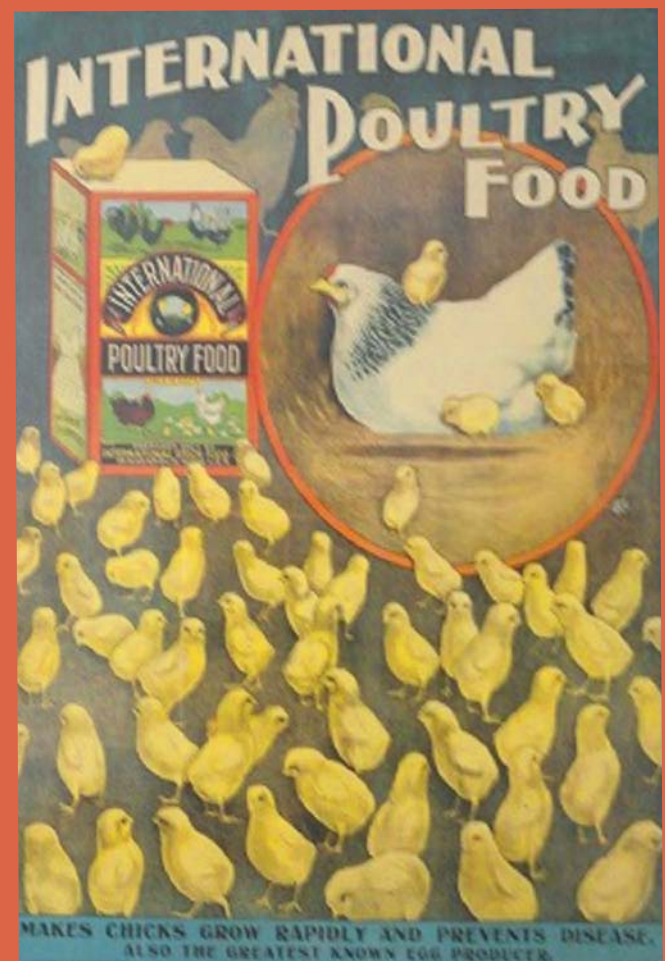


Iconic cast iron hand holding a bottle. Possibly an advertising logo from Whistle Soda. Splendid form with exciting oxidized color and surface. Early 20th century. Size: Approx. 10 x 10 sitting on a custom iron stand. It talks!!!

dennisraleighantiques.com
dgraleigh@myfairpoint.net • Cell 734-604-0898



JORDAN ANTIQUES & ANTIQUARIAN BOOKS



International Poultry Food, Circa 1900.

PO Box 386, Dorset, VT 05251 • 802.867.0425
www.jordanantiquarianbooks.com

THE ADA/HISTORIC DEERFIELD ANTIQUES SHOW

SPECIAL SHOW SECTION

BIRD IN HAND ANTIQUES, Florham Park, N.J. — Keating diorama of the *Intrepid*, signed on the reverse, the "Intrepid," by Captain James Keating, 133 Hann Street, Reading, Mass., This carved wooden ship mounted on plaster board retained its original paint and original frame. It dates circa 1910.



HOLLIS BRODRICK, Portsmouth, N.H.



JEWETT-BERDAN, Newcastle, Maine — Early folk free-hand paint-decorated box, circa 1830, with a pot of flowers, folk horse and folk birds, swag and tassel design on a salmon ground. Also shown is a detail of the folk bird on the side of the decorated box.



JEFFREY TILLOU ANTIQUES



39 WEST STREET, ON THE GREEN, LITCHFIELD, CT
(860) 567-9693

WWW.TILLOUANTIQUES.COM

THE ADA/HISTORIC DEERFIELD ANTIQUES SHOW

SPECIAL SHOW SECTION



THOMAS SCHWENKE, Woodbury, Conn. — Tiny George III carved mahogany tea table.



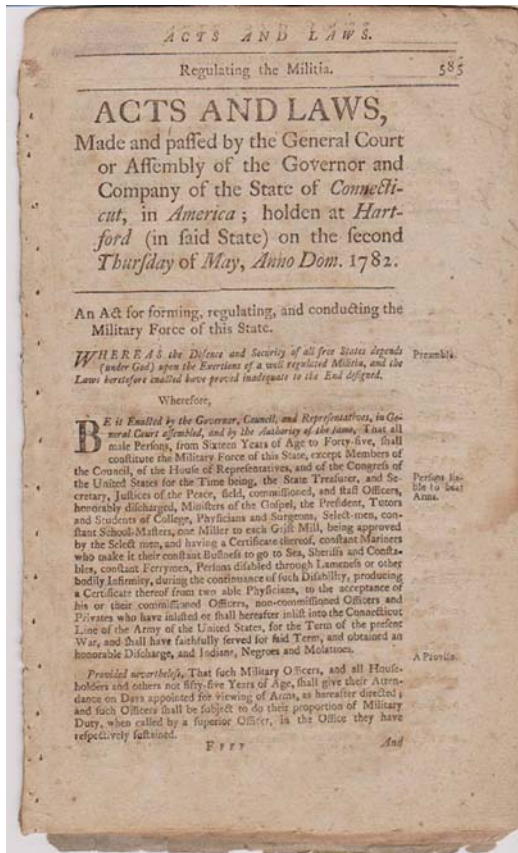
LANGENBACH'S FINE ART & ANTIQUES, Kingston, Mass. — French Empire clock, circa 1810.



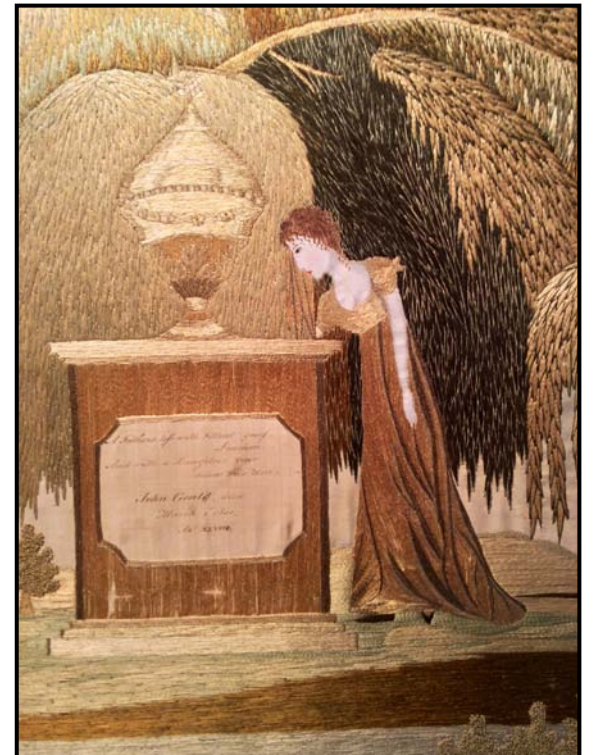
AXTELL ANTIQUES, Deposit, N.Y. — An Eighteenth Century folk doll from wool wheel head.



JEFFREY TILLOU ANTIQUES, Litchfield, Conn. — Rare pair of Federal andirons with matching tools, signed "John Molineux, Boston," circa 1800-15, brass and steel with iron dogs. They measure 24½ inches high, 13½ inches wide and 23 inches deep. This exceptional pair of left and right andirons would have adorned the most formal homes of the Federal period. The steeple-top form is repeated on the log stops and supported by spur feet. The fireplace tools, comprised of shovel and tongs, are identical to the form of the ball and steeple-top turning of the andirons.



JORDAN ANTIQUES & ANTIQUARIAN BOOKS, Dorset, Vt. — *Acts and Laws of the State of Connecticut*, circa 1782.



JEWETT-BERDAN, Newcastle, Maine — detail of a school embroidery in the original frame and eglomise mat. It was executed by Nancy Goulds, circa 1800, it comes with extensive research, Woolwich, Maine.

ELLIOTT & GRACE SNYDER

P.O. Box 598 • 37 Undermountain Road
South Egremont, MA 01258

info@elliottandgracesnyder.com
www.elliottandgracesnyder.com
413-528-3581



A Fine Selection of
17th & early 18th c
Westerwald

THE ADA/HISTORIC DEERFIELD ANTIQUES SHOW

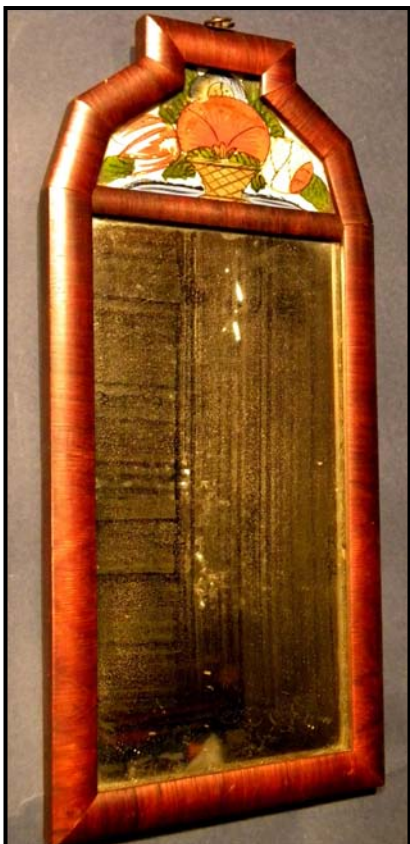
SPECIAL SHOW SECTION



STEPHEN & CAROL HUBER, Old Saybrook, Conn. — Price family memorial, Falmouth, Mass., circa 1805. This graphic and charming silk embroidered memorial was very likely worked by Frances (Fanny) Price at age 15 while attending school. It depicts a monument with five urns honoring her deceased siblings. It is inscribed: In Memory of the Children of Lot and Susanna Price. John Ob April 16, 1796, AE 22.3 — Roxanna Ob March 8, 1802 AE 23.1 — Lydia Ob March 8, 1803 AE 26.9 — Chloe Swift April 19, 1803 AE 33.8 — Susan Ob May 4, 1805 AE 17.9. The standing young lady flanked with trees and estates no doubt represents Fanny. Note the three houses that are barely visible. The frame is a reproduction and reverse painted glass new and there is a small split in the upper center sky. The back retains its original mounting ribbons. It is silk and watercolor on silk, measuring 20¾ by 21¾ inches framed.

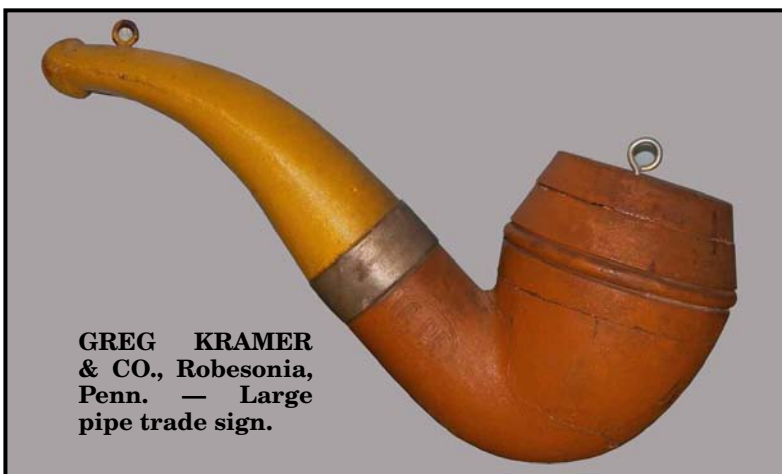


The standing young lady flanked with trees and estates no doubt represents Fanny. Note the three houses that are barely visible. The frame is a reproduction and reverse painted glass new and there is a small split in the upper center sky. The back retains its original mounting ribbons. It is silk and watercolor on silk, measuring 20¾ by 21¾ inches framed.



DENNIS RALEIGH, Wiscasset, Maine — Pressed zinc architectural facial element, circa 1890.

MAD RIVER ANTIQUES, North Granby, Conn. — A small courting mirror dating to the early Nineteenth Century.



GREG KRAMER & CO., Robesonia, Penn. — Large pipe trade sign.



COLETTE DONOVAN, Merrimacport, Mass. — American floral hooked rug.

Langenbach's Fine Art and Antiques



Rare memorial textile of George Washington by C. Gray of Glasgow, 1819 based on an earlier print designed by Charles Buxton in America, 1798.

164 Elm Street, Kingston, MA 02364
781-585-6123 (Day) 781-585-6529 (Evening)
E-mail: langenbach@verizon.net



THE ADA/HISTORIC DEERFIELD ANTIQUES SHOW

SPECIAL SHOW SECTION



MAD RIVER ANTIQUES, North Granby, Conn. — A late Eighteenth Century map of Africa, published by Matthew Carey of Philadelphia.



PETER H. EATON ANTIQUES, Newbury, Mass. — A rare William and Mary X-base candlestand with a molded and chamfered octagonal top, elongated vase-turned shaft, and with notched feet. It is maple throughout, probably Rhode Island, circa 1725-40. This stand was found covered with a thick coat of white paint over the original brown wash (evident under the feet). The top measures 15½ by 15¼ inches and it is 24 inches high.



LANGENBACH'S FINE ART & ANTIQUES, Kingston, Mass. — Cast iron frog hotel bell by R.E. Rich.



SAMUEL HERRUP ANTIQUES, Sheffield, Mass. — Dutch polychrome portrait plate of King William III, circa 1700, 8½ inches in diameter.



DON OLSON FINE AMERICAN ANTIQUES, Rochester, N.Y. — Oval Shaker box in cinnamon paint, New England, Nineteenth Century, with three beautifully cut fingers. The paint and the box are in near mint condition, and it measures 6½ inches long and 2⁹/₁₆ inches tall.

John & Leland Marshall ANTIQUES



Painted Tole Tray, probably England, Mid-Nineteenth Century

johnhuntmarshall3@gmail.com
413.519.1715 | 413.320.1317

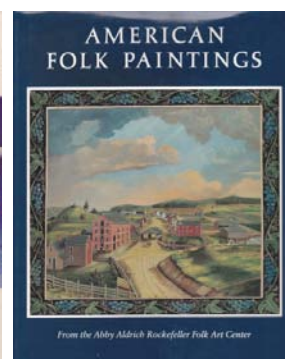
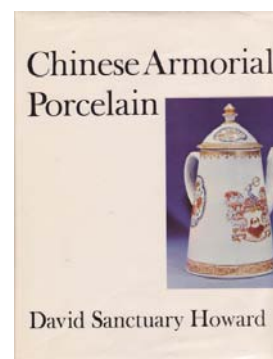
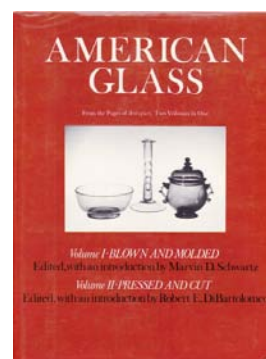
28 North Maple Street, Florence, MA 01062

RUSSACK & LOTO BOOKS, LLC BOOKS ABOUT ANTIQUES

Russack & Loto Books, LLC, specializes in out-of-print reference books about American, Asian, European and Related art and decorative arts of the 17th through the 21st centuries.

Since 1994, we have assisted Collectors, Curators and Dealers by providing an ever-changing collection of the Finest References in the field.

Let us help you become a more educated buyer of Antiques, Fine Art and Folk Art.



Judith Livingston Loto
Russack & Loto Books, LLC
Old Barnstead Road

Northwood, New Hampshire 03261
603.942.5037 Phone/Fax
judy@booksaboutantiques.com



WWW.BOOKSABOUTANTIQUES.COM

THE ADA/HISTORIC DEERFIELD ANTIQUES SHOW

SPECIAL SHOW SECTION



JEFFREY TILLOU ANTIQUES, Litchfield, Conn. — Rare two-arm lighting device, English, circa 1770-90, brass, measuring 16 inches high, 18 inches wide, with a 5½-inch-diameter base.



STEVEN S. POWERS WORKS OF ART & AMERICANA, Brooklyn, N.Y. — Folk art carved beaver, circa 1840, 19 by 8 inches.



NATHAN LIVERANT and SON, LLC, Colchester, Conn. — Figured maple and bird's-eye maple veneer one-drawer stand featuring a rare Battersea enamel pull with image of a mounted cavalry officer. It is from New England, probably coastal Massachusetts, circa 1785-1810.



THOMAS SCHWENKE, Woodbury, Conn. — Fine Duncan Phyfe Sheraton sofa in mahogany.

David L. Good ANTIQUES

7887 State Rt. 177
Camden, Ohio 45311
Phone: (513) 796-2693
Cell: (937) 478-1378

Portrait of Maria Gahanan,
28" x 35½" canvas size,
Signed by Rev. David Bulle.
Ex. Marguerite Riordan and Fred Giampietro.



THE ADA/HISTORIC DEERFIELD ANTIQUES SHOW

SPECIAL SHOW SECTION



DAVID L. GOOD ANTIQUES, Camden, Ohio — Miniature watercolor portrait of W.S.S. Stenson by Daniel Evans.



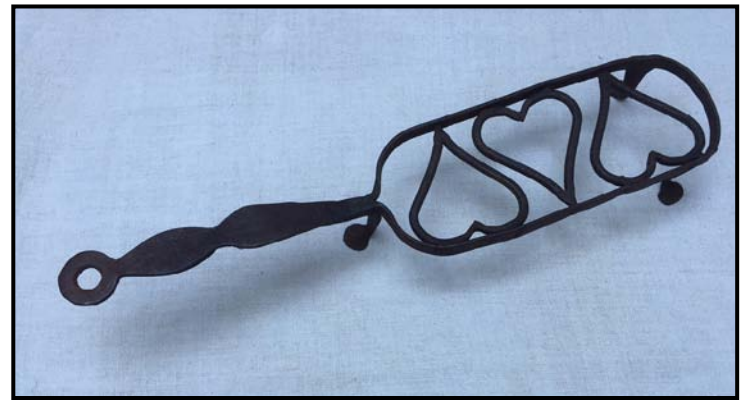
JEWETT-BERDAN, Newcastle, Maine — A rare Middleton, Mass., sampler wrought by Phebe Fuller when she was eleven years old. It is done in extraordinary colors.



NATHAN LIVERANT and SON, LLC, Colchester, Conn. — Queen Anne maple tall chest featuring five graduated drawers with no drawer pulls, supported on bandy cabriole legs. Featuring a history of ownership in Portsmouth, N.H., Bartlett School, New Hampshire, 1770-1795.



SAMUEL HERRUP ANTIQUES, Sheffield, Mass. — Fine pair of Chinese Export dishes, circa 1730, with gilt highlights and measuring 8 3/4 inches in diameter.



COLETTE DONOVAN, Merrimacport, Mass. — Part of an extraordinary collection of hearth equipment.

STEVEN S. POWERS

360 COURT STREET #28, BROOKLYN, NY 11231 | 718.625.1715 OR 917.518.0809 | STEVENPOWERS.COM | MEMBER: ADA



New England Bat House
Circa: 1880
Size: 16 5/8" (h) x 12 1/2" (w) x 4 3/8" (d)

WORKS OF ART & AMERICANA

Greg K. Kramer & Co.

Americana, Folk Art, Period and Painted Furniture



27 W. Freeman Street
Robesonia, PA 19551

By Appointment Only 610-693-3223

WWW.GREGKRAMERANDCO.COM



THE ADA/HISTORIC DEERFIELD ANTIQUES SHOW

SPECIAL SHOW SECTION



DON OLSON FINE AMERICAN ANTIQUES,
Rochester, N.Y. —
Scarce early trade sign, New England, circa 1800–20, mustard and black paint on pine. Note the “long S” beautifully formed and flowing lettering. It is about 32 inches wide by 13½ inches tall by 2 inches at the molding. Simple. Elegant. Soul-full.



GREG KRAMER & CO., Robesonia, Penn. — Pennsylvania bench table in blue paint.



JEFFREY TILLOU ANTIQUES, Litchfield, Conn. — Pole screen, English, circa 1770–85, in mahogany. It is in superb condition with the original needlework and measures 52¾ inches high, the screen measuring 15½ by 13½ inches.

HOLLIS BRODRICK, Portsmouth, N.H.



BERNARD & S. DEAN
Levy INC.
The Finest American
Antiques & Art Since 1901

Bernard & S. Dean Levy Inc.
24 East 84th Street
New York, NY 10028
212-628-7088
www.levygalleries.com

PAIR OF CARVED CHIPPENDALE RIBBON OR PRETZEL BACK SIDE CHAIRS

With Over-upholstered
Saddle Seats
Boston or North Shore
Massachusetts
Circa 1780

Primary Wood: Mahogany
Secondary Wood: Birch
(By Microanalysis)

Height: 36 1/2 inches,
17 1/2 inches (seat)
Width: 21 1/4 inches
Depth: 17 1/2 inches

Reference: A nearly identical
chair in The Henry Francis du
Pont Winterthur Museum
appears in Robert Bishop's,
*Centuries and Styles of the
American Chair*, page 174,
number 227.



THE ADA/HISTORIC DEERFIELD ANTIQUES SHOW

SPECIAL SHOW SECTION



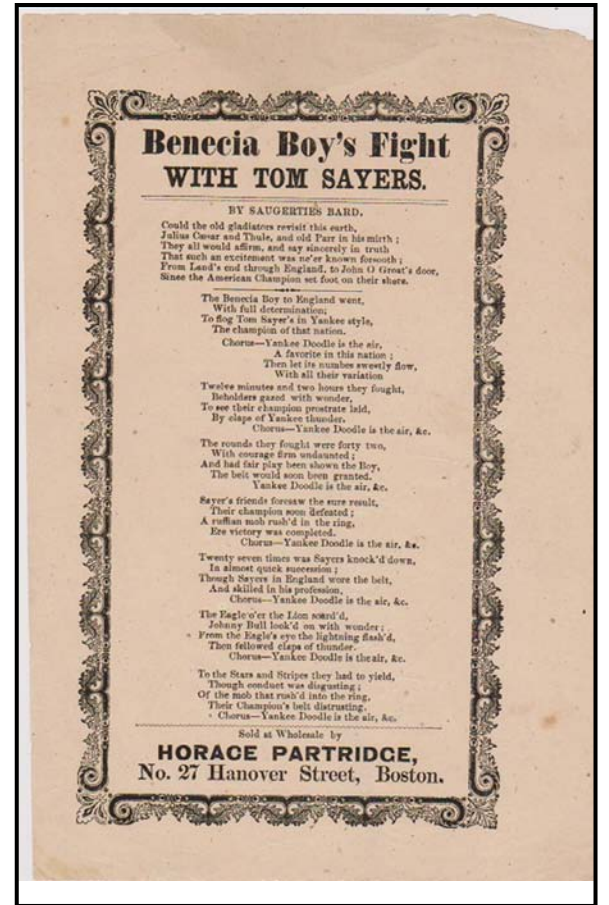
LANGENBACH'S FINE ART & ANTIQUES, Kingston, Mass. — Oil on canvas attributed to Jo-



JEFFREY TILLOU ANTIQUES, Litchfield, Conn. — Full length of a young boy with his dog seated in front of a landscape view, American, probably New York State, unidentified artist, circa 1830-45. This oil on poplar panel measures 42¾ inches by 32½ inches, and in this rare larger size, the artist depicts the young boy situated in a landscape view more commonly seen in formal portraits. The condition lists few minor shrinkage cracks to panel and very minor scattered inpainting.



JORDAN ANTIQUES & ANTIQUARIAN BOOKS, Dorset, Vt. — Union Pacific Depot sign.



JORDAN ANTIQUES & ANTIQUARIAN BOOKS, Dorset, Vt. — Benecia Boy's Fight With Tom Sayers, circa 1860.



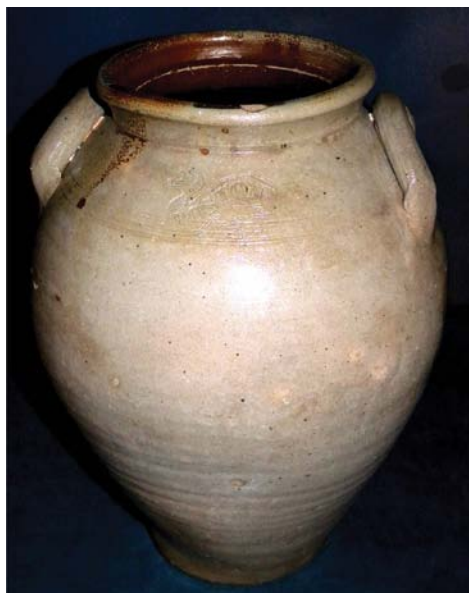
SAMUEL HERRUP ANTIQUES, Sheffield, Mass. — Large Pennsylvania bank with mottled glaze, circa 1840-60, 6½ inches high.



STEVEN S. POWERS WORKS OF ART & AMERICANA, Brooklyn, N.Y. — Homer Gunn (Gunn was a professor of art at Deerfield Academy), "Bird's Nest," copper and bronze, circa 1960, 11 inches in diameter and 7½ inches high.



JEWETT-BERDAN, Newcastle, Maine — Early English tavern sign with a full size officer.



An early 19th C. stoneware jar impressed with the uncommon Boston in a banner motif



**Mad River
Antiques, LLC**

**Steve and Lorraine German
North Granby, CT 06060**

Phone: (860) 653-5733
E-mail: madriverrantiques@aol.com
Web: www.madriverrantiques.com

THE ADA/HISTORIC DEERFIELD ANTIQUES SHOW

SPECIAL SHOW SECTION





STEPHEN & CAROL HUBER, Old Saybrook, Conn. — **Jane Bancroft**, Dunstable, Mass., dated 1830. Jane Bancroft stitched the unusual family register/memorial sampler in 1830 at the age of 23 in Dunstable, Massachusetts. The memorial is to her sister Martha Bancroft, born in 1816 and died in 1817. Interestingly Jane probably stitched in the death dates of her sibling on this family heirloom, note her brother Jonathan died in 1888. Jane was one of ten children born to Jonathan Bancroft and Sarah Taylor. She married Isaac Cummings, a stonecutter, in 1837, and they had two children. It is silk on linen, 17 by 17¼ inches sight.




PETER H. EATON ANTIQUES, Newbury, Mass. — A rare pair of bentwood and slatted rockers in dry old green paint, circa 1890-1920.



Hollis E. Brodrick
Arts and Artifacts of Early America



Just a sampling of my stock of decorative arts, historical, and other artifacts of the types commonly used in early America

Mailing Address
PO Box 30
Portsmouth, NH 03802

Open by Appt.
171 Washington St.
Portsmouth, NH

603-828-6158



4'2 x 7'9 Caucasian Circa 1900 in excellent condition.



Ralph & Karen DiSaia
ORIENTAL RUGS
23 Lyme St., Old Lyme, CT 06371
orientalrugs@snet.net • 860-908-0076
open by appointment
www.orientalrugsltd.com

THE ADA/HISTORIC DEERFIELD ANTIQUES SHOW

SPECIAL SHOW SECTION



JEWETT-BERDAN, Newcastle, Maine — Two extremely rare pieces of New England redware. One is a wedding presentation jar with the names in slip, Sampson and Copeland, and dated 1815. The smaller jar is the wildest Maine decorated redware jar we have ever seen.

The 2015 ADA/Historic Deerfield Antiques Show
October 10th & 11th, 2015



NATHAN LIVERANT and SON, LLC, Colchester, Conn. — Miniature walnut folk art chest of drawers featuring a removable mirror, three drawers with turned wooden knobs and a scrolled apron. It is from New England, probably Connecticut, 1860-1875.



SAMUEL HERRUP ANTIQUES, Sheffield, Mass. — Rare painted two-color piggin signed by the maker, Caleb S. Hersey, circa 1840, measuring 10½ inches high, 8 inches in diameter.



STEVEN S. POWERS WORKS OF ART & AMERICANA, Brooklyn, N.Y. — Artist unknown (signature illegible), "The Old Oak," oil on canvas laid on Masonite, circa 1890, measuring 14¾ by 18¾ sight, 19 by 23 inches framed.

Schwenke

Please Join Us...

The 2015 ADA / Historic Deerfield Antiques Show

Columbus Day Weekend

Saturday, October 10, 2015 ~ Sunday, October 11, 2015



Superb Federal Gilt Mahogany Mirror, Probably Connecticut, circa 1800

203-266-0303 • www.schwenke.com

Colette Donovan

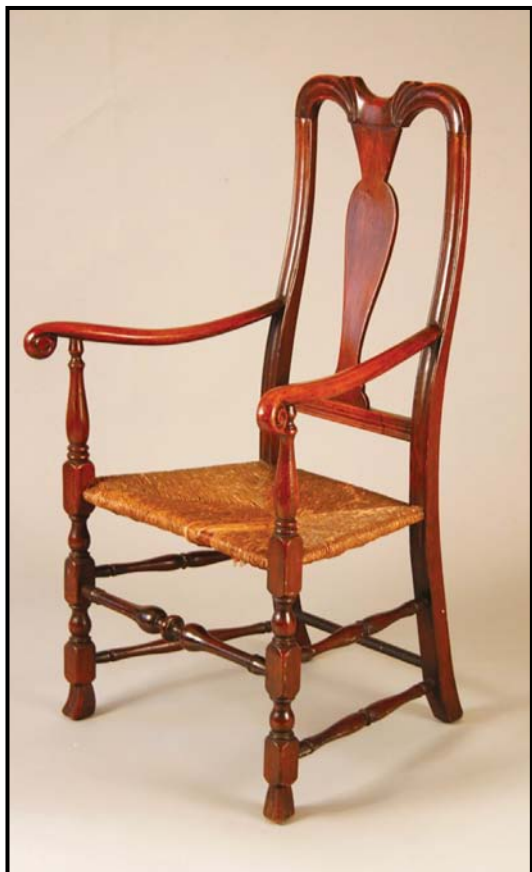
Early American Country Antiques with Textiles

978.346.0614



THE ADA/HISTORIC DEERFIELD ANTIQUES SHOW

SPECIAL SHOW SECTION



PETER H. EATON ANTIQUES, Newbury, Mass. — A fine country Queen Anne armchair with carved, yoked crest, elongated vase-shaped splat, and with block and vase turned legs ending in Spanish feet. It is of maple and ash in fine old surface, Newbury, Mass., area, circa 1745-65. It measures 44½ inches high, 17 inches seat height.



COLETTE DONOVAN, Merrimacport, Mass. — An iconic screw post candlestand.



HOLLIS BRODRICK, Portsmouth, N.H.



GREG KRAMER & CO., Robesonia, Penn. — Paint-decorated washstand with wonderful cutout gallery.

NATHAN LIVERANT and SON, LLC, Colchester, Conn. — Classical document box featuring a black ground, yellow stencil decoration and a fine paint-decorated interior with fruit stencil and sponge paint decoration. It is American, 1820-1845.



DETROIT 1850

Portrait of two children and their beloved bloodhound by Frederick E. Cohen (1818-1858), Detroit, circa 1850. Cohen is listed as an American artist. He was born in England, worked in Detroit and Ohio. The picture is signed "F.E. Cohen," l.r. The frame has age but is not original. 43" x 38" (overall)

SAMUEL HERRUP ANTIQUES

116 Main Street, Sheffield, MA 01257
(413)229-0424
c: (413)822-1471
herrup@verizon.net
www.samuelherrup.com

THE ADA/HISTORIC DEERFIELD ANTIQUES SHOW

SPECIAL SHOW SECTION

Recent Acquisitions

The following is a selection of recent acquisitions to the collection at Historic Deerfield.

The Harvard College class of 1716 commissioned these candlesticks, made by Boston silversmith John Coney, for Henry Flynt (1675–1760), the venerable and long-serving Harvard College tutor. Traditionally students contributed funds for these tutorial gifts as partial compensation when they concluded their studies. Flynt's long tenure at Harvard resulted in his acquisition of a two-handled covered cup, tankard, porringer, teapot, coffeepot and eventually a chamber pot. Tutor Henry Flynt's brother was an ancestor of Henry N. Flynt Sr, the founder of Historic Deerfield.



Candlesticks, silver, made by John Coney (1655/6–1722), engraved on the lower edge, "Ex dono Pupillorum [the gift of the students] 1716," Boston. Gift of Henry N. Flynt Jr in tribute to his father Henry Needham Flynt.



Silver cream pot made by Pygan Adams (1712–1776), engraved on belly "P/L K," New London, Conn., circa 1760–65. Gift in memory of Wilma Blanche Newton Russell (February 13, 1927–September 6, 2011).

Pygan Adams, a New London silversmith, was active in the local community. Adams served as a church deacon, participated in the militia and general assembly, worked as a colony auditor and an overseer of the Mohegan Indians, and was involved in the building of the New London lighthouse in 1760. Since very few examples of his work survive, it has been speculated that he abandoned silversmithing midway in his career to pursue other interests. This cream pot descended in the family to the present day, and has a history of ownership by Luke Perkins (1696–1777) of Groton, Conn., and Kezia Green, (d circa 1792) of New London, Conn., who married on April 15, 1760.

This scallop top chest, probably made by Benjamin Munn III (1738–1824), is the second of three commissioned by David Hoyt as a wedding gift to his daughter Mercy Hoyt on the occasion of her marriage to Justin Hitchcock in 1779. Made of cherry and eastern white pine, it retains the cast brass hardware. The other two chests made for the Hoyt family are in the collections of Historic Deerfield and the Memorial Hall Museum in Deerfield.



Chest of drawers, cherry, eastern white pine and brass, Deerfield, Mass., circa 1799. Museum purchase with funds provided by the Historic Deerfield Collectors Guild.



Tall case clock, William Lloyd, Springfield, Mass., 1803, cherry, eastern white pine, sumac, birch, iron, bitumen, enamel. Museum collections fund with support from the Von Hess Foundation.

This tall clock with case labeled by Springfield, Mass., cabinetmaker William Lloyd (1779–1845) in 1803 has an eight-day brass movement with rack and small snail strike mechanism, separate second hand and enameled sheet iron dial. The case is made of cherry, eastern white pine, sumac and birch. The bonnet is embellished with fretwork of unique, exuberant design. The rays of the patera — the oval sunburst motif — inlaid on the waist door and the lozenge decorating the skirt are tipped with small round insets filled with bitumen, a malleable black tar-based material used for finishing the surface.

Most lacquerware furniture made in Canton, such as sewing tables, desks, card tables, gaming tables or boxes, were copied from Western models sent to China. After constructing, painting and priming the wooden core, Chinese artisans applied several layers of resin harvested from trees of the sumac family.



Paint box, lacquerware, brass, hard-paste porcelain and paint, Canton (Guangzhou), China, circa 1850. Gift of the Estate of Comp-ton Allyn.

This created a smooth, glossy, black surface on which artists painted gilded images inspired by Chinese life, landscape and culture. The importation of lacquerware paint boxes is documented in the Connecticut River Valley as early as 1798.

Chocolate, a popular breakfast beverage in early America, was often prepared using a copper chocolate pot like this example. Grated or scraped chocolate was placed in the pot with hot water, milk or wine, and then swiftly mixed together using the wooden mill. This example has a wooden mill with pierced, tinned sheet iron flanges for additional frothing action. Deerfield residents often enjoyed chocolate. In 1756, Elijah Williams purchased 40 pounds of chocolate at 10 shillings per pound from a Boston merchant.



Chocolate pot, copper, wood, tinned sheet iron and tin lining, England, 1730–70. Gift of Ray J. and Anne K. Groves.



Desk and bookcase, cherry and brass, Deerfield, Mass., circa 1790. Museum purchase with funds provided by the Historic Deerfield Collectors Guild.

The Saxton family desk and bookcase was made in Deerfield about 1790 by an unidentified cabinetmaker who used distinctive dovetailed backboards and the applied pilaster under the central finial plinth. It has a documented history of descent in the family of Deerfield shoemaker David Saxton (1734–1800), who built in about 1765 the salt-box house on Town Lot 1 across The Street from Frary House/Barnard Tavern.

The Very Best New York State Slide Lid Box



Top View



An absolutely wonderful and rare slide lid candle box. Made of bass wood. Painted in choice salmon; fruit and basket in blue, yellow, red and green. Attributed to Ransom Cook, artist. Saratoga, NY origin. Ca. 1810



End View

FOLK ART • BASKETS & STONEWARE

EARLY LIGHTING

EARLY AMERICAN - RICHARD S. AXTELL

Axtell Antiques

1759

Now open Tuesday through Saturday 10:00 to 4:00
607-467-4444 • e-mail: rsaxtell@msn.com

COUNTRY FURNITURE • TREENWARE

HEARTH ACCESSORIES • AMERICAN