



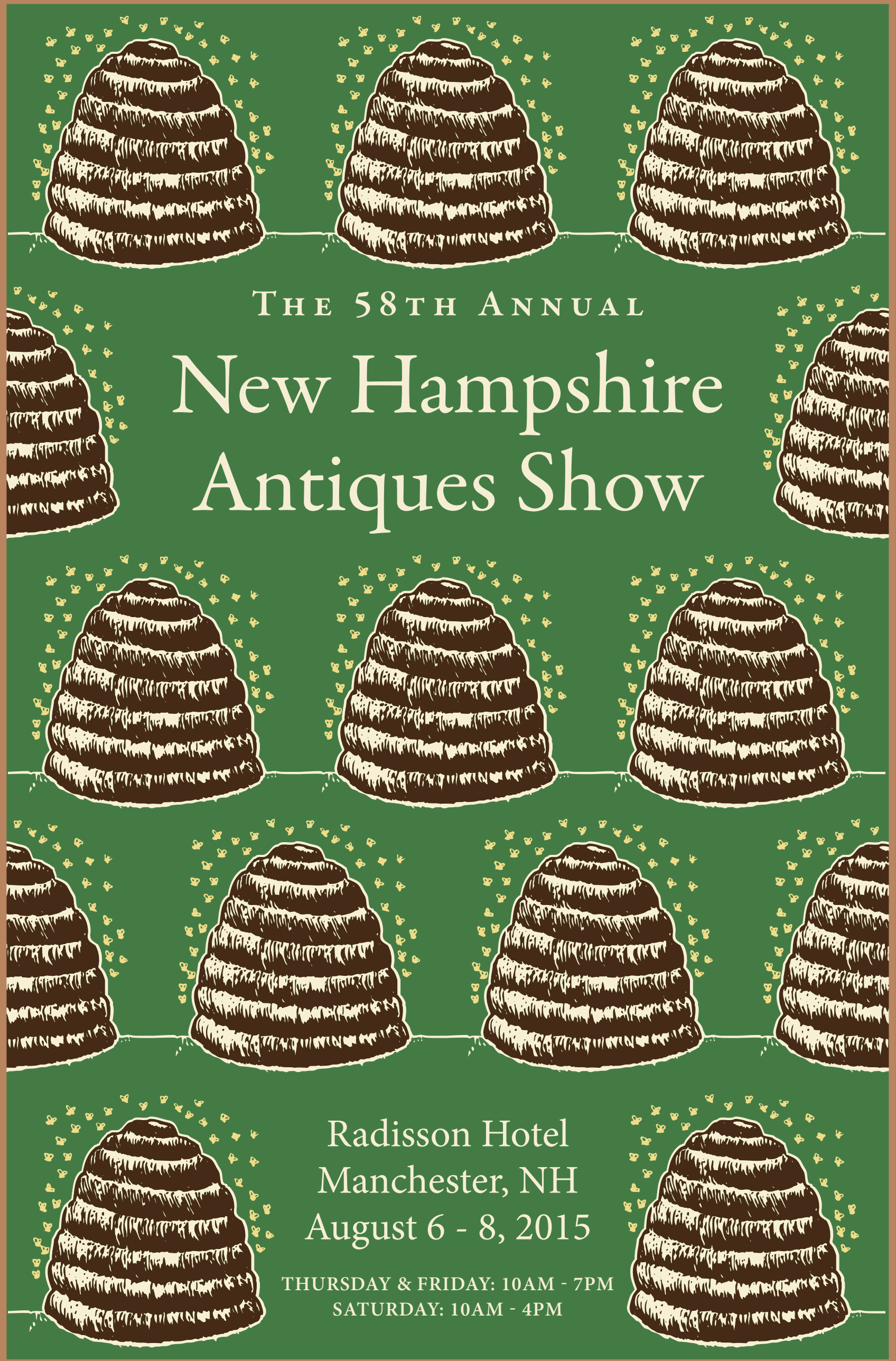
New Hampshire Antiques Show

SPECIAL SHOW SECTION

MELISSA ALDEN • KATE A. ALEX & CO. • AMERICAN CLASSICS, INC. / MERYL WEISS • AMERICAN GARAGE • AT HOME ANTIQUES • BARBARA ARDIZONE ANTIQUES • AXTELL ANTIQUES
OLDE HOPE ANTIQUES, INC. • HERCULES PAPPACHRISTOS • PEWTER & WOOD ANTIQUES • BARBARA BOARDMAN JOHNSON • GAIL & DON PIATT ANTIQUES • KEN & ROBIN PIKE

BILL KELLY ANTIQUES • KELLY KINZIE • NATHAN LIVERANT AND SON, LLC • THOMAS R. LONGACRE ANTIQUES • MG ART & ANTIQUES • NEVERMORE ANTIQUES • NEWSOM & BERDAN ANTIQUES • JEFF & HOLLY NOORDSY ART AND ANTIQUES • THE NORWOODS' SPIRIT OF AMERICA
STEVEN F. STILL ANTIQUES • THE SUGARPLUM • PAUL D. SULLIVAN • THOMAS M. THOMPSON • JONATHAN TRACE • ED WEISSMAN ANTIQUES & FOLK ART • WITHINGTON & CO. • BETTE & MELAYN WOLF INC. • DOUGLAS R. WYANT • GARY F. YEATON ANTIQUES

SCOTT BASSOFF AND SANDY JACOBS • MARTHA BOYNTON ANTIQUES • PAM BOYNTON • BROCK & CO. • HOLLIS BRODRICK • JOHN CHASKI ANTIQUES • NANCY & CRAIG CHENEY ANTIQUES • CHERRY GALLERY • PAUL & LINDA DECOSTE • DENNIS & DAD ANTIQUES • FERGLUSON & D'ARRUDA
SHARON PIATT AMERICAN ANTIQUES • FRANK & BARBARA POLLACK • AMERICAN ANTIQUES & ART • PRATT'S ANTIQUES • RESSER-THORNER ANTIQUES • JOHN H. ROGERS ANTIQUES • STELLA RUEN • A.E. RUNGE JR. -- ORIENTAL RUGS • RUSBACK & LOTTO BOOKS, LLC • JASON SAMUEL FINE ART & ANTIQUES



THE 58TH ANNUAL

New Hampshire Antiques Show

Radisson Hotel
Manchester, NH
August 6 - 8, 2015

THURSDAY & FRIDAY: 10AM - 7PM
SATURDAY: 10AM - 4PM

PETER SAWYER • LEWIS W. SCRANTON • MICHAEL & LUCINDA SEWARD • DOUGLAS L. SOLLIDAY • MARY & JOSHUA STEENBURGH • JEF & TERRI STEINGREBE • STEPHEN-DOUGLAS ANTIQUES
M. FINKEL & DAUGHTER • ROBERT T. FOLEY ANTIQUES • FRED GIAMPIETRO • RUSS & KAREN GOLDBERGER -- RJG ANTIQUES • JOHN D. GOULD • BOB JESSEN & JIM HOHNWALD • JEWETT-BERDAN ANTIQUES



New Hampshire Antiques Show

SPECIAL SHOW SECTION

This section was designed and published by The Bee Publishing Company, 5 Church Hill Road, Newtown, CT 06470; 203-426-8036



Welcome

It's Time To Roll Out The Welcome Mat



Once again it is time to roll out the welcome mat and cordially invite you all to New Hampshire. As usual we are all eagerly awaiting your arrival and bid you a hearty welcome. We hope you come early and take the time to visit our shops before attending the shows, and even take a little side trip between them. A lot of the great stuff that surfaces at these shows comes from these out-of-the-way shops, so it would be to your advantage to go exploring. You never know what you might find. Maybe even see a flock of wild turkeys or a moose or two.

As always, our show exhibitors have been scurrying around all year and putting things aside to bring to our show. All of them work hard to bring you the best of what they have found during year, and many, at the last minute, pull something out of their private collections to spice up their displays.

Every year I procrastinate writing this letter of welcome, trying to think of something new to say. I've been doing this, so it seems, since the last glacier melted. As I was sitting on my deck this morning puff-



ing on my Marlboro and sipping my cup of Starbucks, I was wondering what the people who actually made and used the things we are selling today would think it they were to attend an antiques show.

I'm sure a lot of them would be

honored that their hard work and efforts were still appreciated, and others would think some of us were a bunch of nuts. I'm sure some of them would scratch their heads in disbelief when someone buys a grain bin for the focal point in their

living room or a beautiful quilt or hooked rug that was going to be a wall decoration rather than used on a bed or a floor. What good would a weathervane or a whirligig do inside of a home? After the initial shock wore off, I think they would be pleased that what they used as utilitarian objects were venerated today as works of art. A fine and lasting tribute to all their hard work.

As you wander through the booths of our exhibitors, we hope you will appreciate all the labor and love that both went into the making these objects and that of our dealers who are presenting them to you. We hope you enjoy our show and find something that you can take home and treasure, both as a piece of history and as an appreciation of the person who created the item.

Enjoy the show, our member shops, and all that our Great State of New Hampshire has to offer.

Thomas M. Thompson,
President
New Hampshire
Dealers Association

Visit www.nhada.org for a Preview of Our Show Program

19th Century Theorem

Excellent condition with tones of black and brown.
Period frame.
Very bold and striking presentation.
Size including frame are 25" x 20-1/8"



For further information
please go to

www.barbaraardizone.com

BARBARA ARDIZONE
SALISBURY, CONNECTICUT 06068



TELEPHONE: (860) 435-3057





New Hampshire Antiques Show

SPECIAL SHOW SECTION

PETER SAWYER ANTIQUES

17 COURT STREET,
EXETER, NEW HAMPSHIRE 03833
603 772 5279



Samuel W. Griggs (1827-1898)
One of the most admired
views in the state
of New Hampshire
*Mount Washington
from the Intervale*
18 by 30 inches, oil on canvas,
signed lower right.
Frame size
23 1/2 by 35 1/2 inches.



Card Table
Attributed to Langley Boardman
(1774-1833)
Portsmouth, New Hampshire,
circa 1810.
Mahogany with tiger maple and
birch inlays.

A nearly identical example is
illustrated on pages 254 and 255 in
*Portsmouth Furniture: Masterworks
from the New Hampshire Seacoast*.
Organized and edited by Brock Jobe,
Boston: Society for the Preservation
of New England Antiquities, 1993.
Fine condition, old surface.
30 1/2" high, 36" wide, 17 1/2" deep.

Generally, our shop is open Monday – Friday and visitors are welcome
to stop by anytime. To insure that we are open, a call ahead is encouraged.

Peter Sawyer / Scott Bassett

Petersawyer@comcast.net

PeterSawyerAntiques.com



New Hampshire Antiques Show

SPECIAL SHOW SECTION



M. FINKEL & DAUGHTER, Philadelphia — Rare Quaker School geometric medallion and scattered alphabet sampler made at the Ackworth School by Martha Bentley, "A Token of Love 1815," with full family history. It shows extremely fine needlework and measures 12¾ inches square.



JUDITH & JAMES MILNE, Kingston, N.Y. — Rare diminutive Lincoln whirligig retaining its old painted surface.



A.E. RUNGE, JR, ORIENTAL RUGS, Yarmouth, Maine — Persian Mehraban measuring 15 feet 4 inches by 2 feet 10 inches.



STEVEN STILL ANTIQUES, Manheim, Penn. — Ash burl walnut cutlery tray dating from the mid-Nineteenth Century.



JEWETT-BERDAN, Newcastle, Maine — Miniature decorated six-board blanket box only 9½ inches long, circa 1835.



SPECIALIZING IN DECORATIVE & COLORFUL PERSIAN & CAUCASIAN VILLAGE RUGS

A E Runge, Jr Oriental Rugs

www.rungerugs.com

All rugs guaranteed



Exhibiting at:

New Hampshire
Antiques Show
- August 6-8

Ellsworth Antiques Show
at Woodlawn, Ellsworth, ME
- August 13-15

Coastal Maine Antiques
Show, Damariscotta, ME
- August 19th

Downsizing? I Have Small Heriz Carpets



Persian Heriz Village Carpet
6'11" x 4'10" - Circa 1920s



Persian Heriz Village Carpet
9'1" x 6'1" - Circa 1920s

REPAIRS • HANDWASHING • RESTORATIONS

RUGS SENT ON APPROVAL



New Hampshire Antiques Show

SPECIAL SHOW SECTION

STEPHEN • DOUGLAS

Rockingham, Vermont

802-463-4296

Walpole, New Hampshire



Elizabethtown, PA - Ca. 1880

J.N. Olweiler's Store Sign - purchased from the family 30 years ago - First public offering - Exceptional original condition



New Hampshire Antiques Show

SPECIAL SHOW SECTION



NANCY & CRAIG CHENEY, Mansfield, Ohio — Pottery rooster signed Edwin Meaders and measuring 16 inches tall by 8 inches wide.



STEPHEN-DOUGLAS, Rockingham, Vt. — Crisp, American Indian painted splint basket.



PEWTER & WOOD ANTIQUES, Enfield, N.H. — An 1892 Rand McNally globe.

CHERRY GALLERY, Damariscotta, Maine — Realistically carved and painted pickerel mounted on a chestnut backboard, circa 1940, 28 inches wide and 9½ inches high.



FRANK & BARBARA POLLACK, Highland Park, Ill., and Sunapee, N.H. — The “Eliab Eaton and Lucretia Flint” family birth record and memorial, Nobleboro, Lincoln County, Maine, circa 1835, a watercolor and ink on paper in the original grain painted architectural frame. This exceptional watercolor includes a combination of both a family tree noting the births of Eaton’s 12 children and a memorial probably executed by Sarah B. Eaton. The dynamic grain painted architectural frame with three inset poems along the bottom section and a beautifully scrolled pediment with an inset oval mirror along the top makes this a unique piece of art. It measures 23¼ inches by 25¼ inches.



Bette & Melvyn Wolf, inc

**1196 SHADY HILL
COURT, FLINT,
MICHIGAN 48532**

Tel. 810-732-6595
Fax: 810-732-1467
E-mail: b.m.wolf@att.net
www.wolfpewter.com

*18th & 19th C
Pewter & Accessories*

RARE 18TH CENTURY
NEW YORK CITY
PEWTER FLAT TOP TANKARD
BY HENRY WILL,
CIRCA 1763-93



New Hampshire Antiques Show

SPECIAL SHOW SECTION

MICHAEL & LUCINDA SEWARD

Pittsford, Vt. 05763 • 802-483-6434 • antinfo@sover.net



www.michaelandlucindasewardantiques.com





New Hampshire Antiques Show

SPECIAL SHOW SECTION



ROBERT T. FOLEY ANTIQUES, Gray, Maine



THOMAS M. THOMPSON ANTIQUES, Pembroke, N.H. — The rabbit candy containers range in height from 8 to 9½ inches.



A.E. RUNGE, JR, ORIENTAL RUGS, Yarmouth, Maine — Persian Feridan bird carpet measuring 10 feet 7 inches by 7 feet.



STEVEN STILL ANTIQUES, Manheim, Penn. — Fine miniature candle mold, circa 1840, only 5 inches in height.



DOUGLAS R. WYANT ANTIQUES, Cassopolis, Mich.





New Hampshire Antiques Show

SPECIAL SHOW SECTION

AMERICA'S LEADING ANTIQUE SAMPLER AND NEEDLEWORK DEALER



est. 1947

M. Finkel & Daughter.

AMERICA'S LEADING ANTIQUE SAMPLER AND NEEDLEWORK DEALER

936 Pine Street • Philadelphia, PA 19107 • tel: 215-627-7797 • fax: 215-627-8199

www.samplings.com • mailbox@samplings.com



New Hampshire Antiques Show

SPECIAL SHOW SECTION



FRANK & BARBARA POLLACK, Highland Park, Ill., and Sunapee, N.H. — A rare diminutive English combware slip decorated loaf dish, circa 1750-75, measuring 7¼ by 9 inches, with the interior of this oblong combed and press-molded dish trailed and combed in dark brown slip on a cream ground. See: *English Slip-Decorated Earthenware at Williamsburg* by Leslie B. Grigsby, pgs 17, 18 and 58, figs 73 and 74 for similar examples, history and a description of combware techniques.

JUDITH & JAMES MILNE, Kingston, N.Y. — Folky, life-sized carved wood heron.



MISSOURI PLAIN FOLK, Sikeston, Mo. — Carved and articulated figure, fragment as found, of wood, cloth and paper. It measures 14½ inches tall and is mounted on a contemporary iron stand.



KEN & ROBIN PIKE, Nashua, N.H. — Professionally mounted newspaper boy's apron, circa 1900, Albany, N.Y.



BETTE & MELVYN WOLF, INC., Flint, Mich. — Basin by William Will, Philadelphia, circa 1764-98, measuring 6¼ inches in diameter.

Jonathan Trace

BY APPOINTMENT
POST OFFICE BOX 7106
PORTSMOUTH, NH 03802
(603)431-1197

JTRACEANTIQUES@MAC.COM

We are always interested in purchasing fine American silver and furniture-single items or collections.

Zachariah Brigden
Boston, Massachusetts
c. 1760





New Hampshire Antiques Show

SPECIAL SHOW SECTION

WE WILL BE LETTING THE CATS OUT OF THE BAG ON AUGUST 6TH



STEVEN F. STILL

Antiques

1717 South Colebrook Road • Manheim, PA 17545

Phone: (717) 459-3595 • Cell: (717) 682-0410

www.stevenstillantiques.com





New Hampshire Antiques Show

SPECIAL SHOW SECTION

New Exhibitor Pewter & Wood Antiques Specializes In Country Furniture

Barbara Boardman Johnson, owner of Pewter & Wood Antiques in Enfield, N.H., has been in business since 1983. Originally from Connecticut, she became interested in antiques as a child traveling around Connecticut with her parents who collected antique silver. She attended the University of Vermont and graduated with a degree in secondary education. She taught junior high school in Vermont and later in Arizona. But Barbara's passion for antiques and love of New England brought her back every summer with her children in tow.



Barbara Boardman Johnson

Barbara first opened her shop in her home in Arizona and exhibited at numerous shows in Arizona, California and New England. In 1991, Barb opened her shop in Scottsdale, Ariz., filled with New England antiques until 2004. Then she and her husband moved just north to Cave Creek and relocated her shop on their property in the desert. The Cave Creek shop is open November to April, by appointment or chance, with monthly open houses. In addition, every spring Pewter & Wood hosts an Alzheimer's benefit and silent auction to fund research.

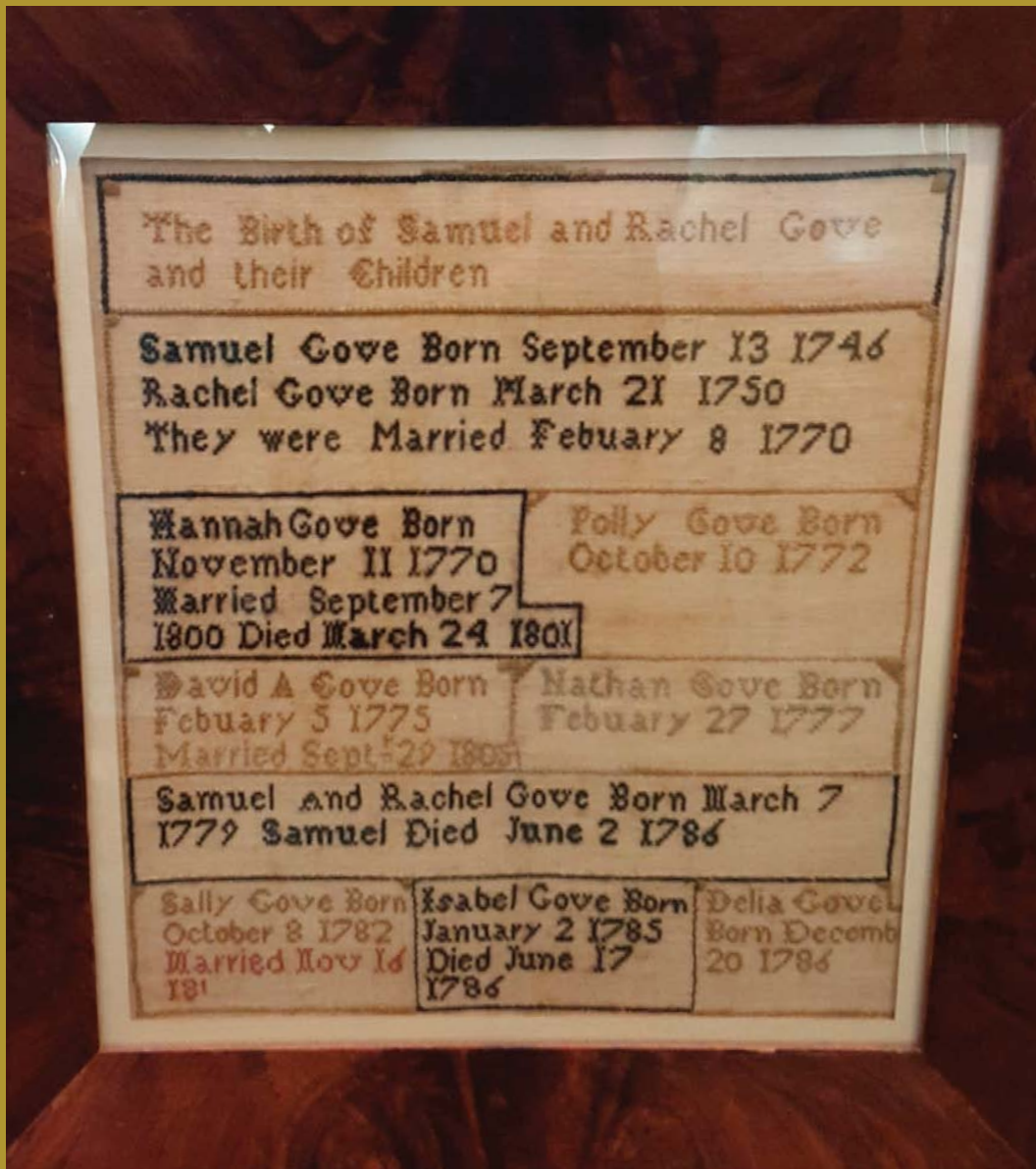
Barbara opened her shop in Enfield, N.H., across the road from her house in 2001. She specializes in Eighteenth and Nineteenth Century American country furniture, accessories, folk art and textiles. Emphasis is on original paint. The shop is open May through October, by appointment or chance. Barb exhibits at shows in New England and Pennsylvania, including Vermont Antiques Dealers Association Show, and Magic Mountain, Vermont. For information, www.pewterandwoodantiques.com or 602-677-5686.



HOLLIS E. BRODRICK, Portsmouth, N.H.



SCOTT BASSOFF / SANDY JACOBS ANTIQUES, Swampscott, Mass. — Beautiful, early hooked rug with center cartouche of roses bordered by cornucopias of roses.



THOMAS M. THOMPSON ANTIQUES



Pembroke, NH

(603) 496-8497

www.keepersantiques.biz

A New Hampshire family record in needlework of the Gove family who lived in Nottingham and Deerfield, N.H. Documentation is included. Frame size 14" x 13½". Needlework size is 9½" x 10"



New Hampshire Antiques Show

SPECIAL SHOW SECTION

CHARLES HENRY GIFFORD (1839-1904)



Frenchman's Bay, Mount Desert Island, Maine, 1874

Oil on canvas

12 x 20 inches

Signed and dated at lower right: *C. H. Gifford / 74*

Gifford style frame

BROCK & CO.

Works of the 19th, 20th and 21st Centuries

23 Bradford Street, Concord, Massachusetts 01742

(978) 369-1358 brockcompany@gmail.com

www.brockandco.com

by appointment





New Hampshire Antiques Show

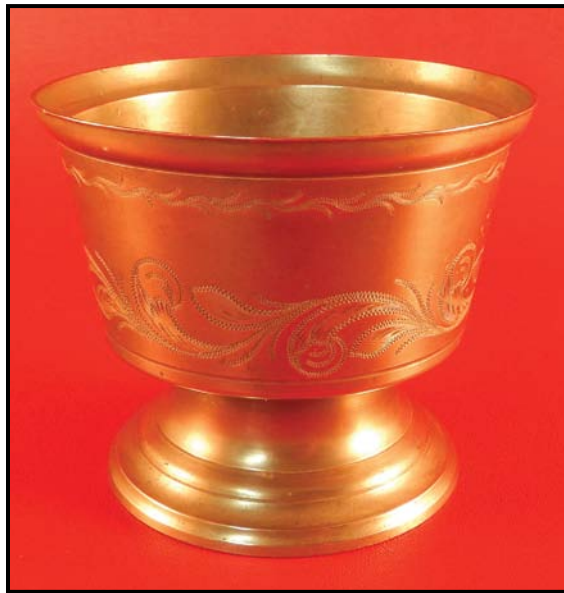
SPECIAL SHOW SECTION



STEPHEN-DOUGLAS, Rockingham, Vt. — Diminutive six-board chest with exuberant original paint decoration, Chester, Vt., origin, circa 1825-35.



JEWETT-BERDAN, Newcastle, Maine — Early carved Maine banner weathervane in the best chrome yellow sizing, circa 1850.



BETTE & MELVYN WOLF, INC, Flint, Mich. — Engraved waste bowl, signed Whitlock, Troy, N.Y., circa 1840, 5 inches wide.



NEVERMORE ANTIQUES, Dover, N.H. — Mini child's slate in pine, New England, Nineteenth Century.

KEN & ROBIN PIKE, Nashua, N.H. — A Nineteenth Century miniature chip carved wooden book box with hearts and shells.



Douglas R Wyant ANTIQUES

Harvard University
Vernon Struck, 34" x 45"
Unknown Artist
Oil On Canvas

DOUG WYANT ANTIQUES

920 E State Street,
Cassopolis, MI 49031
269.214.6354 cell
269.445.2018



New Hampshire Antiques Show

SPECIAL SHOW SECTION



American ash wood burl paddle 9 3/4" long.



Canterbury Shaker grain measure, initialed by two Shaker trustees, Nathaniel Draper and Levi Stevens. The bottom stamp is of S. Eastman 1855 who ran a store in Concord, NH with Shaker goods.



New York State Native American effigy handle scoop maple.



Native American maple burl long handled scoop. L = 24 5/8"; bowl diameter 6 3/4"



Lehware covered tub 8 1/2" tall, 7" diameter at tub top tapering to 5 7/8" at bottom. Original paint



Double sided cake board - mahogany - 13" X 11 5/8" X 1 3/4". Signed S. Parsells



Tibetan mold for worship cookies. 15 1/2" X 1 7/16" X 1 5/8" late 19th century.



Six small boxes Ex Roger Bacon



Swing handled covered tub labeled "SUGAR" original yellow paint and red stenciling 12" tall excluding handle

John H. Rogers
ANTIQUES
CAFS, LLC
P. O. Box 234, Elkins,
New Hampshire 03233
603-526-6778



New Hampshire Antiques Show

SPECIAL SHOW SECTION

M. FINKEL & DAUGHTER, Philadelphia — New Hampshire sampler made by Lovilla Emery of Hillsborough, dated 1833. Worked on extremely fine linen with a pair of large birds, likely eagles, at the top. It descended in the family until at least 1948 and is accompanied with full family history. This sampler measures 19 by 17 inches.



PEWTER & WOOD ANTIQUES, Enfield, N.H. — Group of three Nineteenth Century smalls in the original paint.



JEWETT-BERDAN, Newcastle, Maine — Folk art carved wood African American doll with the original clothes, late Nineteenth Century.



JOHN ROGERS ANTIQUES, CAFS, LLC, Elkins, N.H. — Five-inch long black ash herb mixing bowl with upturned ends.

New Hampshire Antiques Show

Radisson Hotel
Manchester, NH
August 6 - 8, 2015



AMERICAN GARAGE

WWW.AMERICANGARAGEANTIQUES.COM



EXHIBITING AT THE 58TH ANNUAL NEW HAMPSHIRE ANTIQUES SHOW AUGUST 6-8 2015



New Hampshire Antiques Show

SPECIAL SHOW SECTION

Frank & Barbara Pollack *American Antiques & Art*

American Primitive Paintings, Furniture, Textile, Folk Art,
and Related Accessories of the 18th, 19th, and 20th Centuries.

1214 Green Bay Road, Highland Park, Illinois 60035

Tel: 847.433.2213

Cell: 847.922.5141

barbarapollack@comcast.net

A Rare Miniature Blanket Chest



A Unique Miniature Paint-Decorated Blanket Chest

American, possibly New York State, pine, circa 1825.

This "little gem" has exquisite form with its exceptionally tall and delicately turned legs. It is beautifully painted in shades of salmon, red, green and mustard yellow on a dark green background.

Variations of the central motif have been found on boxes attributed to New York State. H. 11¼ in. W. 16¾ in. D. 7½ in.



Box 344, Sunapee
New Hampshire 03782
603-763-2403
Cell: 847.922.5141

I will be in Sunapee, New Hampshire, until late August where I will have a representative selection of my inventory available. Please call me at 603-763-2403

Exhibiting at



Aug. 6-8, 2015
Manchester, NH

See color photos on the Internet at www.maineantiquedigest.com and at www.antiquesandfineart.com/bpollack



New Hampshire Antiques Show

SPECIAL SHOW SECTION

The Sugarplum To Display Garden Antiques

About 45 years ago; wanting to have a business that allowed me to be at home with my children, The Sugarplum was born. I had always been interested in antiques, having grown up surrounded by them. I dealt in a general line of antiques until my first trip to England. There I discovered my passion — garden antiques. As an avid gardener myself, it was a perfect fit. England and Europe became my source for garden and architectural antiques.

We expanded the business: doing shows in the Hamptons, New York City, Brimfield, the New York Botanical Garden and many local venues. We set up at the York Antiques Gallery in York, Maine, when Gail and Don Piatt first opened 27 years ago and also took a space at the Parker-French Antiques Center (just Parker's then!) in Northwood, N.H.

We have been featured in many magazines and books: *Country Gardens*, *The Gardener's Life*, *Old House Interiors*, etc, and last year *Yankee Magazine* named us the Best Antique Garden Accessories Shop. *The Victory Garden* filmed our gardens in a series they did on using antique garden ornaments in the garden and I have appeared on the *Martha Stewart Show* several times discussing the age and care of antique garden ornaments and accessories.

Though my husband Garrett has his own building and remodeling business, he is an integral part of The Sugarplum. He builds all our sets and display pieces and, of course, moves all the heavy pieces!

We are honored to be participating in this year's New Hampshire Antiques Dealers Association Show...We will be bringing our Best!



Garrett and Anne Rowe



JEFF & HOLLY NOORDSY, ART & ANTIQUES, Cornwall, Vt. — A collection of Nineteenth Century Gothic blown glass pickle jars.



CHERRY GALLERY, Damariscotta, Maine — Hooked rug with a naively rendered scene of a teepee, hiker and bear, circa 1920, measuring 37 by 19½ inches and mounted.



Early 20th century shooting gallery with 4 owl spinners and a large stationary owl. The owllets are about 10 inches tall the large stationary 12 inches tall.

Jef & Terri Steingrebe
 PO Box 2268
 New London, NH 03257
 603 763 9244 • jefs@sunapee.net



New Hampshire Antiques Show

SPECIAL SHOW SECTION

Jeff and Holly Noordsy



Rare stoneware jar made by freeman Thomas Commeraw for the oysterman Daniel Johnson, also a free African American. Potted in Manhattan, 1800-1803.



18 Route 74, Cornwall, VT

www.noordsyantiques.com • jeffnhol@shoreham.net • 802-462-2901





New Hampshire Antiques Show

SPECIAL SHOW SECTION



Extra! Extra!

See and Read all about the exciting treasures coming to Antiques Week in New Hampshire this year

And don't forget to stop by BOOTH #1 at the N.H.A.D.A. show. See you there

AMERICAN CLASSICS, INC

603-523-7139

802- 384-4337



In Canaan, NH and WRJ, VT
Meryl, Jay and Robert

Kelly Kinzle To Bring Rare & Unusual Antiques To Show

Kelly Kinzle grew up helping his parents Dorothy and Don in their antique and auction business in Duncansville, Penn. As a young man, he founded his own business and moved to New Oxford, Penn., with his partner Paralee Winstel in 1990, where they now run Centre Square Antiques in the old bank building on the historic town square.

Although Kelly is known for his inventory of tall case clocks, firearms, Pennsylvania decorative arts and firefighting memorabilia, he is interested in those objects that are outstanding in any genre and period. His reputation for handling the rare and unusual has made him a favorite with collectors and scholars alike. He has also worked closely with important institutions including the Smithsonian, Colonial Williamsburg and the Philadelphia Museum of Art to add significant objects to their collections.



Kelly Kinzle



JUDITH & JAMES MILNE, Kingston, N.Y. — Half-hull plating model, 6 feet 4 inches, retaining its original graphic detail.



AXTELL ANTIQUES, Deposit, N.Y. — Freehand painted detail from a Schoharie County, N.Y., blanket chest.



ROBERT T. FOLEY ANTIQUES, Gray, Maine



New Hampshire Antiques Show

SPECIAL SHOW SECTION



GARY F. YEATON ANTIQUES

18th & Early 19th Century American Furniture & Accessories

RARE NEW HAMPSHIRE SHELF CLOCK

By Silas Parsons, Swanzey
Circa 1810

New Hampshire shelf clocks of this type are uncommon, but this is an especially rare form for clockmaker Silas Parsons.

Refer to *New Hampshire Clocks and Clockmakers* by Charles S. Parsons to see a nearly identical example (fig. 312). The model in Parson's book is currently on exhibit at the Henry Ford Museum and was featured in the Currier Museum of Art exhibition entitled, "The Decorative Arts of New Hampshire 1725 – 1825." I have not seen another Parson's shelf clock of this type other than these two examples.

This clock features a mahogany case with patterned inlays on the case and plinth. The eight-day movement is in remarkable condition and is totally original. The number "2" is marked in chalk on the inside face of the backboard. The clock dial and case are also in excellent condition.

H – 36 ¾ in. W – 12 ½ in. D. 5 ½ in.

We carry a select inventory of investment quality New England antiques with a special interest in New Hampshire furniture.

VISIT US AT THE SHOW!

- BOOTH #61

GALLERY LOCATED AT

280 South St. Concord, NH 03301

By appointment - (603) 228-4840

gfyeatonantiques@comcast.net

www.GaryYeatonAntiques.com





New Hampshire Antiques Show

SPECIAL SHOW SECTION



STEPHEN-DOUGLAS, Rockingham, Vt. — Impossibly cute and early baby-size American bow back Windsor armchair, circa 1800.

SCOTT BASSOFF / SANDY JACOBS ANTIQUES, Swampscott, Mass. — Edwardian platinum filigree sapphire and diamond drop earrings.



STEVEN STILL ANTIQUES, Manheim, Penn. — Maple ladle retaining the original red paint, circa 1820.

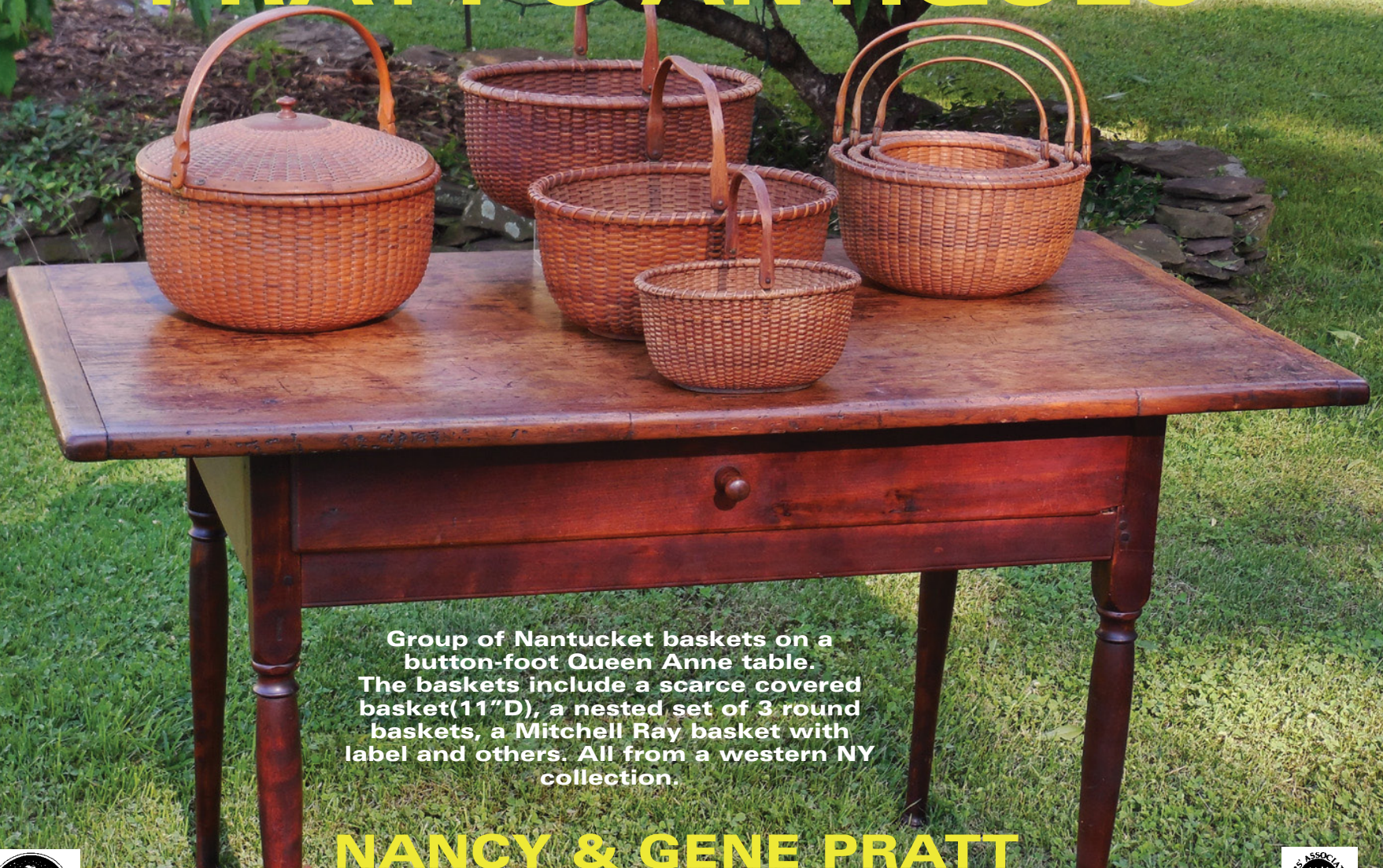


DOUGLAS R. WYANT ANTIQUES, Cassopolis, Mich.



A.E. RUNGE, JR, ORIENTAL RUGS, Yarmouth, Maine — Persian Heriz from a New Hampshire estate measuring 18 feet 3 inches by 11 feet 2 inches.

PRATT'S ANTIQUES



Group of Nantucket baskets on a button-foot Queen Anne table. The baskets include a scarce covered basket (11" D), a nested set of 3 round baskets, a Mitchell Ray basket with label and others. All from a western NY collection.

NANCY & GENE PRATT
VICTOR, NY

585-330-7203 • www.geneprattantiques.com





New Hampshire Antiques Show

SPECIAL SHOW SECTION



Paint Decorated Corner Cupboard
from Lehigh County, Pennsylvania
Circa 1820

Height: 88"; Width: 42"; requires a 29" corner.
Outstanding condition with exceptional original paint.

Kelly Kinzle Antiques

9 Center Square, P.O. Box 235, New Oxford, PA 17350

kellykinzle@comcast.net | 717-495-3395





New Hampshire Antiques Show

SPECIAL SHOW SECTION



THE NORWOODS' SPIRIT OF AMERICA, Timonium, Md. — Wooden dry-surfaced painted whirligig of the man with a great hat.


JEWETT-BERDAN, Newcastle, Maine — Large folksy theorem on velvet, circa 1830.



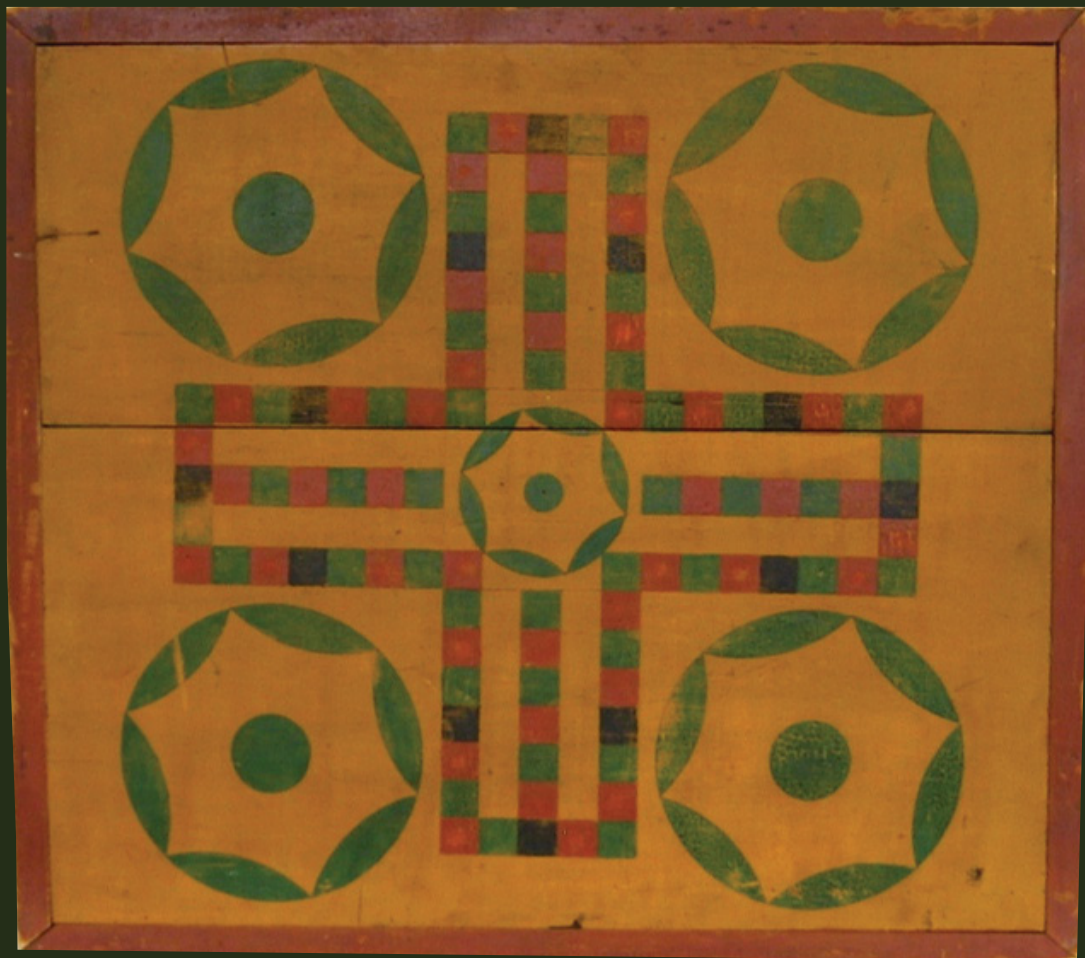
MICHAEL & LUCINDA SEWARD, Pittsford, Vt. — Miniature courting mirror.



New Hampshire Antiques Show
 Radisson Hotel
 Manchester, NH
 August 6 - 8, 2015



FRANK & BARBARA POLLACK, Highland Park, Ill., and Sunapee, N.H. — A large Father Christmas candy container, Germany, circa 1890-1910, with Santa having a hand painted composition face, hands and boots and holding a feather tree sprig and a basket of wrapped packages, ribbons and bells. He stands on a mica-covered base, dressed in pumpkin-color robe and stuffed hat. Missing is the fur on his beard and some of the wooly trim on his robe, but overall is in very good condition. He measures 22 inches tall.



Graphic 19th century Parcheesi Gameboard in original condition. See Wendel, *Gameboards of North America*, p. 49

Nancy and Craig Cheney

ART AND ANTIQUES

Mansfield, Ohio

cneney@neo.rr.com

740-670-3008



New Hampshire Antiques Show

SPECIAL SHOW SECTION



“BEST OF SHOW”

Spirited Folk Hooked Rug of a Favorite Black Horse,
Colorful Border, Fine Condition,

A Delightful 114 Year Old Survivor From Lancaster County Pennsylvania.

40 1/2” Wide 26” High



NEWSOM & BERDAN ANTIQUES

newsomberdan@aol.com

717-792-6744

www.newsomberdan.com

Abbottstown & Thomasville, PA





New Hampshire Antiques Show

SPECIAL SHOW SECTION



JASON SAMUEL FINE ART, Milford, N.H. — Nineteenth Century miniature porcelain doll in gutta-percha case.



NEWSOM & BERDAN, Thomasville, Penn. — Nineteenth Century painted face doll measuring 23 inches tall.



BOB JESSEN / JIM HOHNWALD, Fitzwilliam, N.H. — An early William and Mary painted looking glass and an early spill box in the original paint. Both are of New England origin and date from the Eighteenth Century.



BILL KELLY, Limington, Maine — New England split basket in the best original blue paint, Nineteenth Century and measuring 9 inches tall. It is in excellent condition.

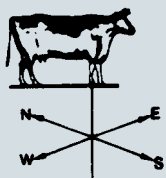


BETTE & MELVYN WOLF, INC, Flint, Mich. — Geometric handle basin porringer by Richard Lee, Massachusetts and Vermont, 1770-1820, measuring 3 1/4 inches in diameter.

GAIL & DON PIATT ANTIQUES

When in *New Hampshire*, please stop and see us at *Keepers and Austins Antiques*, Rt. #4, Chichester, NH www.keepersantiques.biz

GAIL & DON PIATT
1221 Briar Hill Road,
Contoocook, NH 03229
By Appointment ~ 603-746-4568



Late 18th century, Queen Anne candlestand, attributed to the Dunlap family of cabinet makers of NH, it's in early black paint.

Queen Anne Chippendale side chair dated 1791
Hogsrapper stamped Shaw in early bittersweet paint



New Hampshire Antiques Show

SPECIAL SHOW SECTION

1722 TAPE LOOM BOARD

Sailor made, chip carved pine tape loom board. Details include hearts, whales, a boat and a sailor. Carved dated 1722. Massachusetts origin.



• FOLK ART • BASKETS & STONWARE

• HEARTH ACCESSORIES • AMERICAN COUNTRY FURNITURE • TREENWARE

• REDWARE • EARLY LIGHTING

Axtell Antiques

- EARLY AMERICANA -
RICHARD S. AXTELL

1 River St., Deposit, NY 13754
Now open by appointment: 607-467-4444
e-mail: rsaxtell@msn.com



New Hampshire Antiques Show

SPECIAL SHOW SECTION



M. FINKEL & DAUGHTER, Philadelphia — Philadelphia sampler by Elizabeth Clemson, dated 1820, with pictorial scene and fine bands in strong colors. It comes with full family history: Elizabeth's brother, Thomas Green Clemson founded Clemson University in South Carolina. It measures 16½ by 15½ inches.



MG ART & ANTIQUES, Merrimac, Mass. — Carved owl with glass eyes, 14 inches tall including the base, and dating circa 1900.



CHERRY GALLERY, Damariscotta, Maine — Monumental folk art wood and metal aviary with polychrome paint decoration, circa 1920, measuring 74 inches wide, 61 inches high and 18 inches deep.



DOUGLAS R. WYANT ANTIQUES, Cassopolis, Mich.



FRANK & BARBARA POLLACK, Highland Park, Ill., and Sunapee, N.H. — A dynamic painted and decorated boot and shoemaker's trade sign in pine, signed "Manderbach," Salem, Mass., and dating circa 1880. This boldly and imaginative painted sign, in dry original untouched condition, depicts the nature of Mr F.J. Arnold's business and the goods he offered for sale. The 1880s US census lists Francis J. Arnold (b 1861) as "working in a shoe shop in Salem, Essex, Massachusetts." The sign measures 54½ inches wide, 19 inches high and 2 inches deep, and was purchased from a private collector in Maine.



OLDE HOPE
ANTIQUES, INC.

And They're OFF!

to the 58th Annual New Hampshire Antiques Show



Two exceptional running horse "Dexter" weathervanes, by Cushing & White, later L.W. Cushing & Sons, of Waltham, MA, c.1865-80. The verdigris example with original label of Cushing & White and with a cast zinc head and mane, L. 45½". The other with a fine weathered surface of verdigris and remnants of the original gilding, L. 43".

P.O. Box 718 • New Hope, PA 18938-0718
215-297-0200 • info@oldehope.com

By Appointment in NYC at 115 E. 72nd St.
and at our gallery in Bucks County

Visit us online at OldeHope.com

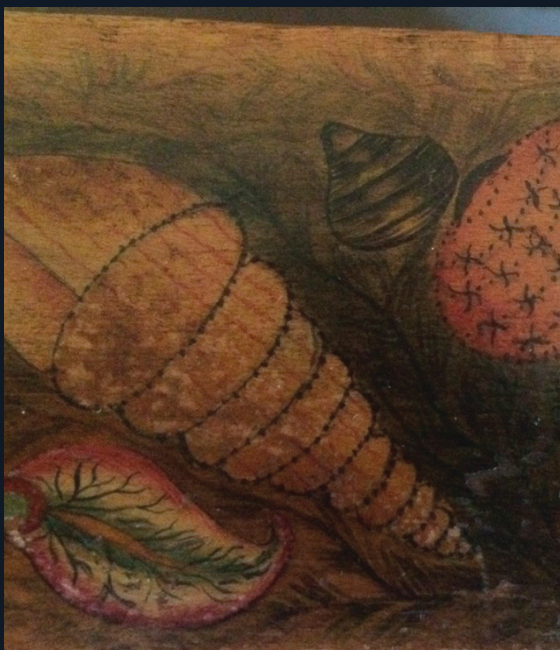




New Hampshire Antiques Show

SPECIAL SHOW SECTION

Come see all this and more at booth #62



Bill Kelly
936 Cape Road
Limington, ME 04049
207-838-2849
bill.kelly419@yahoo.com



New Hampshire Antiques Show

SPECIAL SHOW SECTION



THOMAS M. THOMPSON ANTIQUES, Pembroke, N.H. — This gameboard, measuring 22 by 13½ inches, has two attached boxes with sliding lids for holding the game pieces.

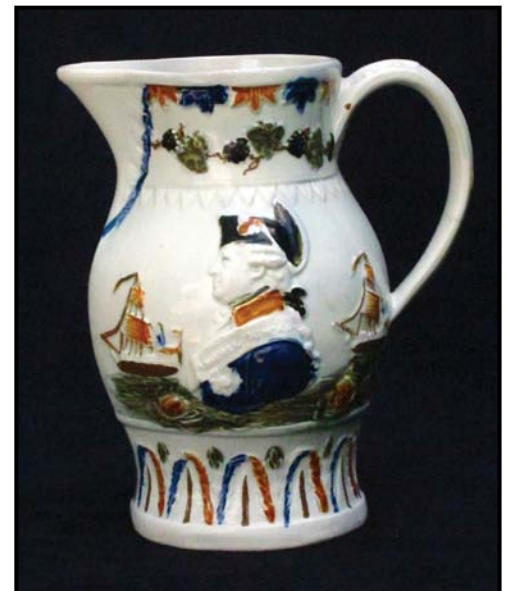
JEWETT-BERDAN, Newcastle, Maine — Carved stone Liberty face dating from the late Nineteenth Century.



GAIL & DON PIATT, Contoocook, N.H. — Ammi Phillips portrait hanging over a Pennsylvania hunt board.



NANCY & CRAIG CHENEY, Mansfield, Ohio — Pintail duck decoy, signed Madison Mitchell 1940.



PAUL & LINDA DeCOSTE, West Newbury, Mass. — Pratt ware pitcher, 1797, Admiral Duncan and Captain Trollop.

NATHAN LIVERANT AND SON, LLC ANTIQUES



Queen Anne maple highboy with original pierced brass hardware. New Hampshire 1760-1785



168 SOUTH MAIN STREET
P.O. BOX 103, COLCHESTER, CT 06415
(860)537-2409 FAX (860)537-0577

mail@liverantantiques.com
Website: liverantantiques.com





New Hampshire Antiques Show

SPECIAL SHOW SECTION

SEE US IN
BOOTH #2

RJG Antiques

Russ and Karen Goldberger
Decoys and Folk Art Since 1977

Fresh Pickings!



www.RJGAntiques.com

russ@RJGAntiques ■ 603.433.1770 ■ P.O. Box 60, Rye, NH 03870



New Hampshire Antiques Show

SPECIAL SHOW SECTION



PRATT'S ANTIQUES, Victor, N.Y. — Miniature cherry and bird's-eye maple stand with doll-size decorated Pennsylvania chair.

PEWTER & WOOD ANTIQUES, Enfield, N.H. — Family of three black rag dolls.



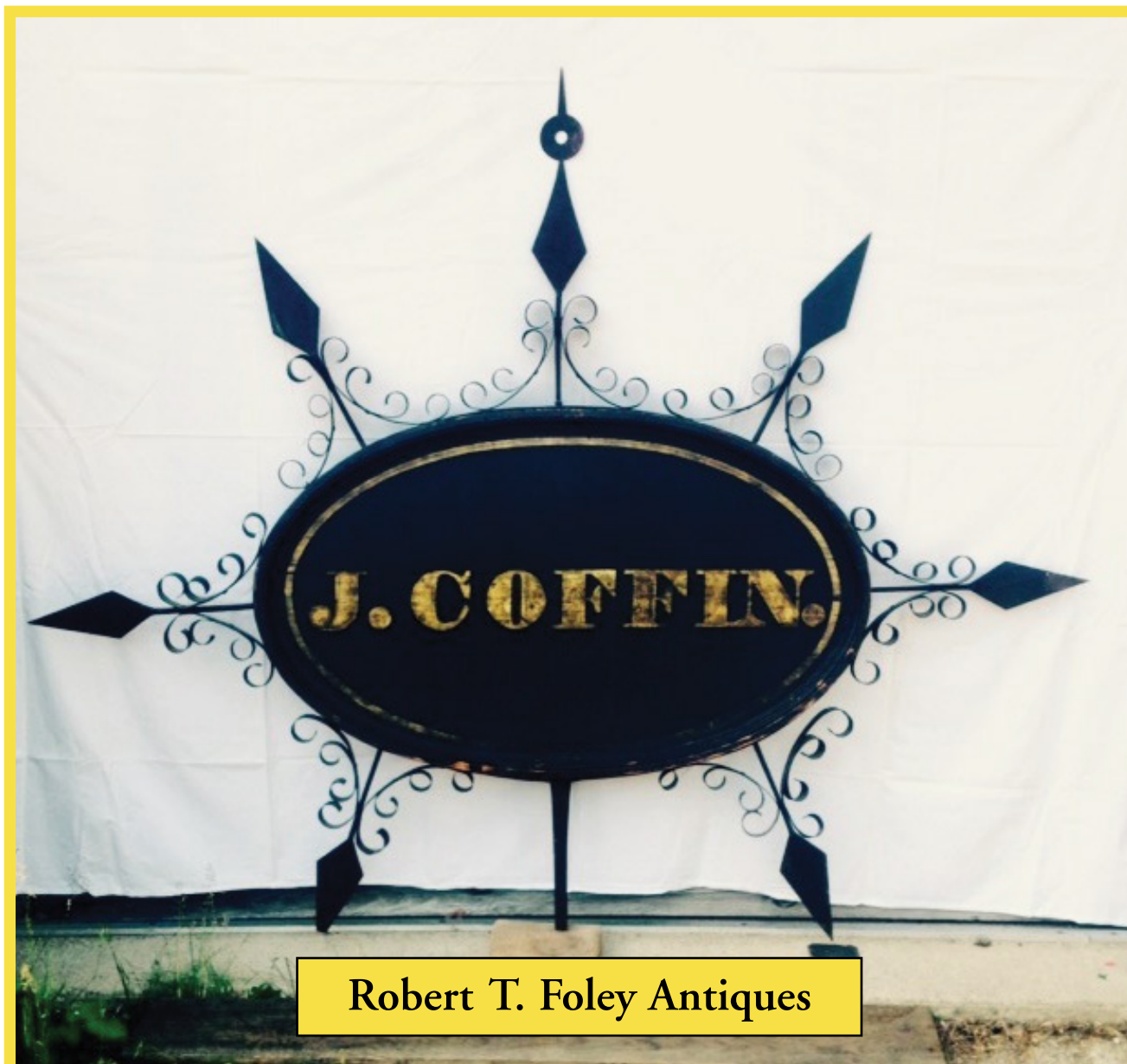
STEVEN STILL ANTIQUES, Manheim, Penn. — Maple cherry candle lantern in the original finish, circa 1820.



AXTELL ANTIQUES, Deposit, N.Y. — Heart butter stamp.



STEPHEN-DOUGLAS, Rockingham, Vt. — Large, covered wooden bucket with handle, pink with bold, black painted graphic design, patented February 10, 1886.



Gray, Maine • 207-756-4290



New Hampshire Antiques Show

SPECIAL SHOW SECTION



*Our new shop in Lewes, Delaware is now open.
Please contact us or visit us online for details.*



john chaski antiques

*Buying and selling objects of quality and integrity that
celebrate the creativity of the human spirit*

11 North Main Street
Camden, DE 19934

Cell: 302-448-6492 • john.chaski@gmail.com



www.johnchaski.com



New Hampshire Antiques Show

SPECIAL SHOW SECTION

Jewett - Berdan



An important early 19th century Presentation Board. Chip carved in cherry maintaining the original surface. Measuring 13.5" x 9 3/4". A Fraktur in wood initialed "S. A."

VISIT US IN OUR NEW BOOTH #47, LOWER LEVEL

Thomas J. Jewett



15 Hopkins Hill Road
Newcastle, Maine 04553

(207) 563-3682

jewett-berdan@roadrunner.com

www.jewettandberdan.com



Charles P. Berdan



New Hampshire Antiques Show

SPECIAL SHOW SECTION

Jewett - Berdan



A recently discovered charming folk portrait of Emma Freeman Field on a monumental poplar panel circa 1835. Original frame measuring 55" x 36".

VISIT US IN OUR NEW BOOTH #47, LOWER LEVEL

Thomas J. Jewett



15 Hopkins Hill Road
Newcastle, Maine 04553

(207) 563-3682

jewett-berdan@roadrunner.com

www.jewettandberdan.com



Charles P. Berdan

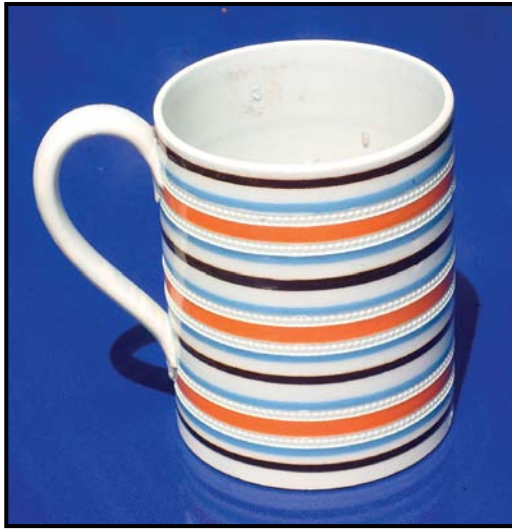


New Hampshire Antiques Show

SPECIAL SHOW SECTION



RJG ANTIQUES, Russ & Karen Goldberger, Rye, N.H. — Matching crow decoy pair, 15½ inches long, Charles Perdw, Henry, IL. This stylish rigmate pair with turned facing heads is in excellent original paint, has minor repairs, and dates circa 1930s.



JEFF & HOLLY NOORDSY, ART & ANTIQUES, Cornwall, Vt. — Colorful English mocha mug, circa 1800.



A.E. RUNGE, JR, ORIENTAL RUGS, Yarmouth, Maine — Fachralo Kazak prayer rug, 55 inches by 40 inches.



M. FINKEL & DAUGHTER, Philadelphia — Painted counter with 16 graduated drawers in the original figured maple grain paint decoration, New England, circa 1860, measuring 32 inches high, 50 inches wide and 19 inches deep.



RESSER-THORNER ANTIQUES, Manchester, N.H. — Washington Memorial stipple engraving, "America lamenting her loss at the Tomb of General Washington," January 20, 1800, measuring 13½ by 8¼ inches sight.



JEWETT-BERDAN, Newcastle, Maine — Outstanding sheet copper farm trade sign with incredible verdigris surface, Pennsylvania, circa 1930.



**HERCULES J. PAPPACHRISTOS
ART & ANTIQUES**



Derry, New Hampshire Tel: 603.548.5959

*"A sampling of painted objects
you'll see in my booth
this summer!"*





New Hampshire Antiques Show

SPECIAL SHOW SECTION

Sharon Platt

American Antiques

Period Decorative Arts for the Early American Home



Charming New England folk portrait, lovely young woman with hair comb and coral earrings.
Oil on canvas, painted on original stretcher, early black painted frame. Ca. 1820 – 30.



Rare select grouping of everyday objects
used in early America.



Booth No. 36



American Folk Rag Dolls . Perfect example of a true “rag doll” on
left, when dolls were truly made of just rags, wearing plaid cloak. Doll on
right: stitched nose, hands, braided silk hair, and cape with a ruffled hood.
Ca. earlier 19th c. Provenance: The Late Joan Thayer collection.

www.sharonplatt.com

sharon@sharonplatt.com • 603•430•7556 • P.O. Box 60, Portsmouth, NH 03802



New Hampshire Antiques Show

SPECIAL SHOW SECTION



JOHN ROGERS ANTIQUES, CAFS, LLC, Elkins, N.H. — Chip-carved pie crimper with fork, 7⁵/₈ inches long on a custom stand.



JUDITH & JAMES MILNE, Kingston, N.Y. — Pair of Nineteenth Century cast iron architectural angels.



MISSOURI PLAIN FOLK, Sikeston, Mo. — Oval pantry box signed "B. Sprague" in the original polychrome surface. It measures 5⁵/₈ by 4¹/₄ and is 2¹/₄ inches tall.



BOB JESSEN / JIM HOHNWALD, Fitzwilliam, N.H. — Early linsey-woolsey in vibrant red, New England origin, dating from the Eighteenth Century.



AXTELL ANTIQUES, Deposit, N.Y. — Framer primitive needlework sampler.

Lewis W. Scranton ANTIQUES



38 Fire Tower Road, Killingworth, CT 06419 (860) 663-1060



Cherry Queen Anne Candle Stand ca 1790



American Tin Decorated Coffee Pot ca 1830 All Original Decorations



Rush and Candle Holder 18th Century Origin



Norwalk CT Slipware ABC Plate ca 1825



Small Paint Decorative Trunk from Worcester MA ca 1820



Pair of Pie Plate American Tin Wall Sconces ca 1810



New Hampshire Antiques Show

SPECIAL SHOW SECTION



Hollis E. Brodrick

Arts and Artifacts of Early America



Just a sampling of colonial period ceramics and accessories.



Fine 18th c mezzotint print of General Wolfe - who took Quebec in 1759, thus essentially ending the French and Indian war. Wolfeboro, N.H. was established and named for him the same year. This is but one example of a generous selection of 18th c prints, of colonial American interest, we will be bringing to the show.



A large selection of early iron hearth equipment boasting many unusual and exceptional examples.



Fine 18th c New England candlestand, with exuberant turnings to base, a N.H. family record signed on reverse "Henniker May 18, 1824. By Moses Connor"

Also will be bringing the unusual assortment of 18th c. historical items, early ceramics, and "everyday" objects.



All items subject to prior sale

Mailing Address
PO Box 30
Portsmouth, NH 03802
603-828-6158

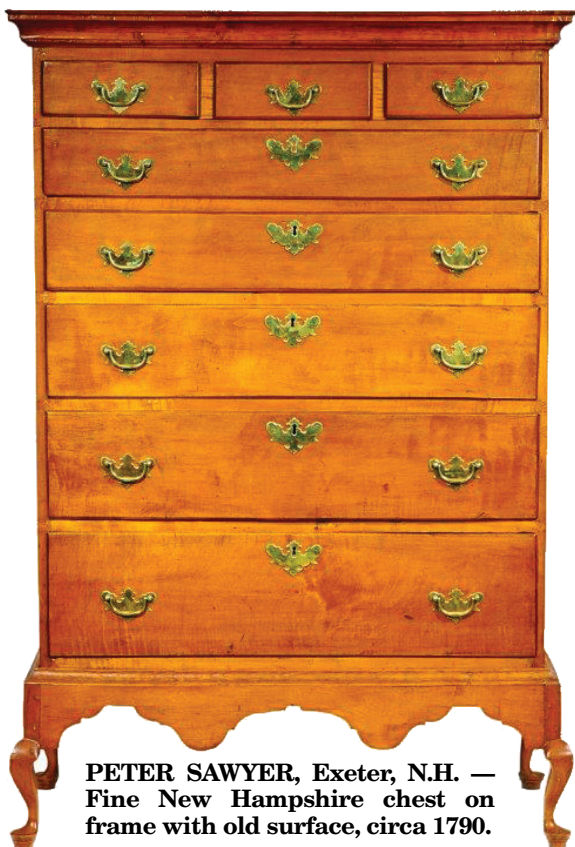
Open by Appt.
171 Washington St.
Portsmouth, NH





New Hampshire Antiques Show

SPECIAL SHOW SECTION



PETER SAWYER, Exeter, N.H. — Fine New Hampshire chest on frame with old surface, circa 1790.



KATE A. ALEX & CO., Warner, N.H. — Impressive two-part, carved and painted stone garden mushroom, 34 inches tall.



NEWSOM & BERDAN, Thomasville, Penn. — Painting of African American woman at her clothesline, oil on board.



RESSER-THORNER ANTIQUES, Manchester, N.H. — Franklin Mezzotint, 1763, measuring 15½ by 12 inches sight.



DOUGLAS R. WYANT ANTIQUES, Cassopolis, Mich.



NANCY & CRAIG CHENEY, Mansfield, Ohio — Nineteenth Century chalk figure of a dog, measuring 7½ inches tall and 6 inches wide.

THOMAS R. LONGACRE ANTIQUES

www.thomaslongacre.com • tom@thomaslongacre.com • 603 876 4080

See us in Booth #3. Our 38th year



Graphic two sided iron and sheet metal trade sign from Abilene, Kansas. Nice details include foliated edges on three sides and white clouds framing the interior. The multiple paint layers indicate a possible late 19th century to early 20th century origin. The sign identifies the "Cloud Co. Rail-head". Abilene was part of the massive cattle drives from Texas to Kansas in the late 1860's. Abilene, KS became the biggest US stockyard to market the Texas long-horn cattle by rail during this period. The sign measures 28" wide by 25" high.



New Hampshire Antiques Show

SPECIAL SHOW SECTION



John Halley Bellamy carved Masonic Shelf Clock, late 19th Century measuring 12" h x 10" w (at base)



"Caddy" Doorstop 8" height

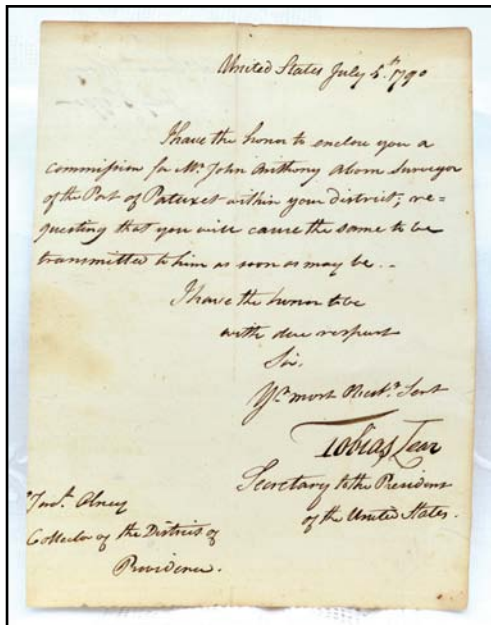


Abolitionist Desk Box, 5 1/4" x 3 3/4" x 4", "Humanity", polychromed lead

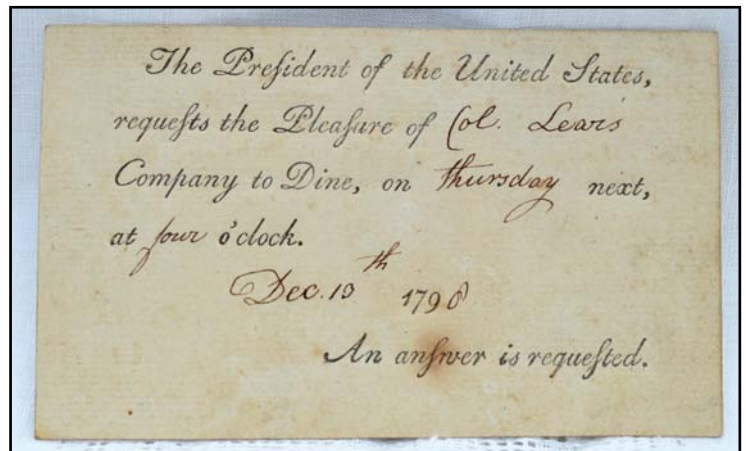
Three Centuries of AMERICANA



Centennial Column by James W. Tufts, 8 1/2" height, 1876. Silver plated column celebrating the centennial with Declaration of Independence and vignettes at base.



Tobias Lear Letter, 8 x 6, July 5, 1790, written as "Secretary to the President of the United States (Washington)" re: enclosing a surveyor of the port commission (R.I.)



John Adams Invitation as President on gilt edged card, 3" x 4 3/4", inviting Tobias Lear to dinner, December 23, 1798

**RESSER-THORNER
ANTIQUES**
A single-owner shop in the New England tradition

603-669-7677
5 Kennard Road, Manchester NH 03104





New Hampshire Antiques Show

SPECIAL SHOW SECTION



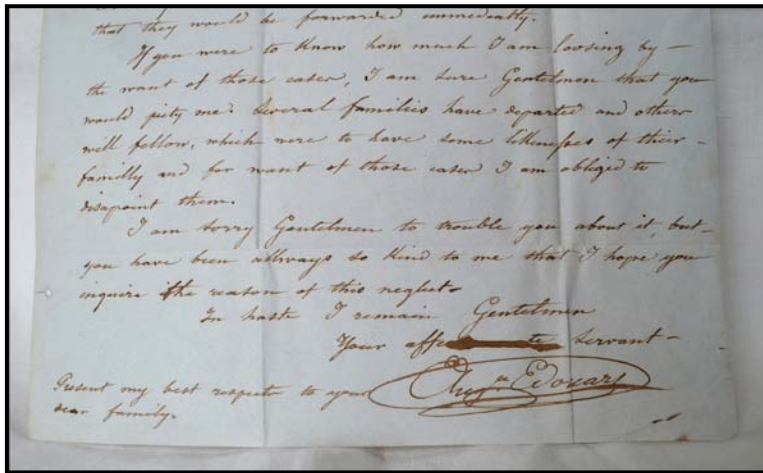
BOB JESSEN / JIM HOHNWALD, Fitzwilliam, N.H. — Early Revolutionary War lantern of Massachusetts origin, circa 1770.



ED WEISSMAN, Naples, Fla. — Eighteenth Century pair of Portuguese pewter bulbous candlesticks, 7½ inches tall.



JEF & TERRI STEINGREBE, New London, N.H. — A large carved fish mounted on a birch bark covered panel about 4 feet wide.



RESSER-THORNER ANTIQUES, Manchester, N.H. — Edouard letter July 6, 1844, from Saratoga to his supplies dealer.



JEWETT-BERDAN, Newcastle, Maine — Colorful and whimsical hooked rug pictured in the book *Rags to Rugs*, York County, Penn. It dates circa 1890.



FRANK & BARBARA POLLACK, Highland Park, Ill., and Sunapee, N.H. — An exceptional carved cane with a man's head atop a "whimsy" staff, signed and carved on all four sides: "Abram Cook, Maker, 1906, Canisteo, New York." The wood is in untouched original surface and the carved, small objects move freely within the staff. Measuring 36 inches long, this cane is an example of form and function the transcends into a strong expression of folk art in wood.

MARTHA BOYNTON

978-448-5031

PAM BOYNTON

GROTON, MA 01450



Very nice wooden watch repair sign nice size 11x12



Velvet fruit with extra large strawberry



Rare German candy container with child



Portraits of young people attributed to Hartwell. Nice color tones, excellent condition- Maine 15x18



2 shatters lamps one blue one aqua



New Hampshire Antiques Show

SPECIAL SHOW SECTION

*Paul J.
DeCaste*

978-363-1420
West Newbury,
MA 01985



According to family tradition the sitter is Captain Davis from New Bedford, Mass.
Original frame, attributed to Joseph Whiting Stock.



A selection of red ware, including a sgraffito eagle decorated piece from New Hampshire,
inscribed presentation or signature; Walter P. Dickinson - Amherst, New Hampshire



New Hampshire Antiques Show

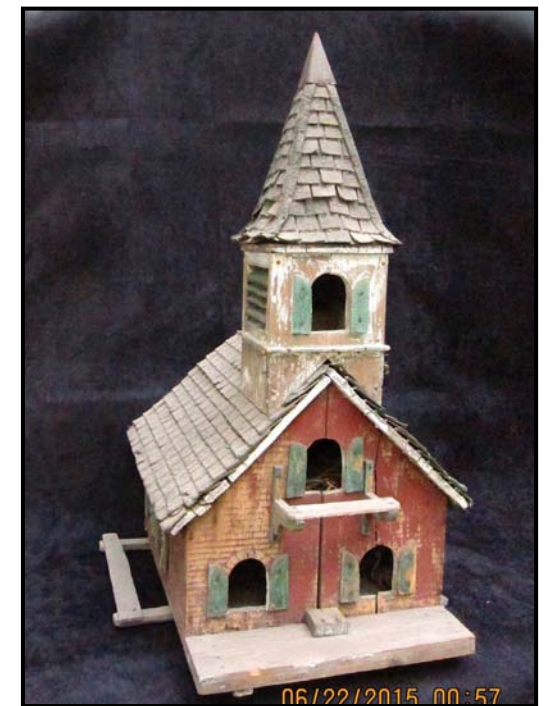
SPECIAL SHOW SECTION



THE NORWOODS' SPIRIT OF AMERICA, Timonium, Md. — Two windup clogged toys.

GAIL & DON PIATT, Contocook, N.H. — Tin scone in the sunburst pattern.

KEN & ROBIN PIKE, Nashua, N.H. — Unusual large size Norfolk oyster bucket, Boston, 14 by 14 inches.



JEFF & HOLLY NOORDSY, ART & ANTIQUES, Cornwall, Vt. — The "Jennie," a miniature early Twentieth Century hand carved canoe with matching paddles with a wonderful surface.

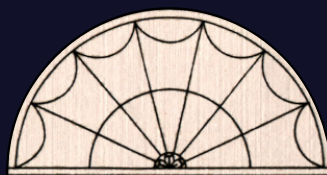
PAUL & LINDA DeCOSTE, West Newbury, Mass. — Birdhouse dating from the early Twentieth Century.



06/22/2015 00:57



Late 18th C papier mache patch box in original untouched paint with charming portrait of a young woman. Wonderful craquelure surface. Measures 3" across.



Paul Sullivan ANTIQUES

PO Box 3773
Manchester, NH 03105
603-669-8886



Fabulous blue & white toile handkerchief in "The Aviary" pattern printed on cotton with a rolled edge. Signed J. Laughton sculpt. lower right. Probably late 18th-early 19th century. In pristine condition. Measures 27 x 25.

Provocatively clad late 18th C tobacco shop figure in mahogany. Original surface, mounted on a square base. Measures 27" high overall. A pleasure to behold.



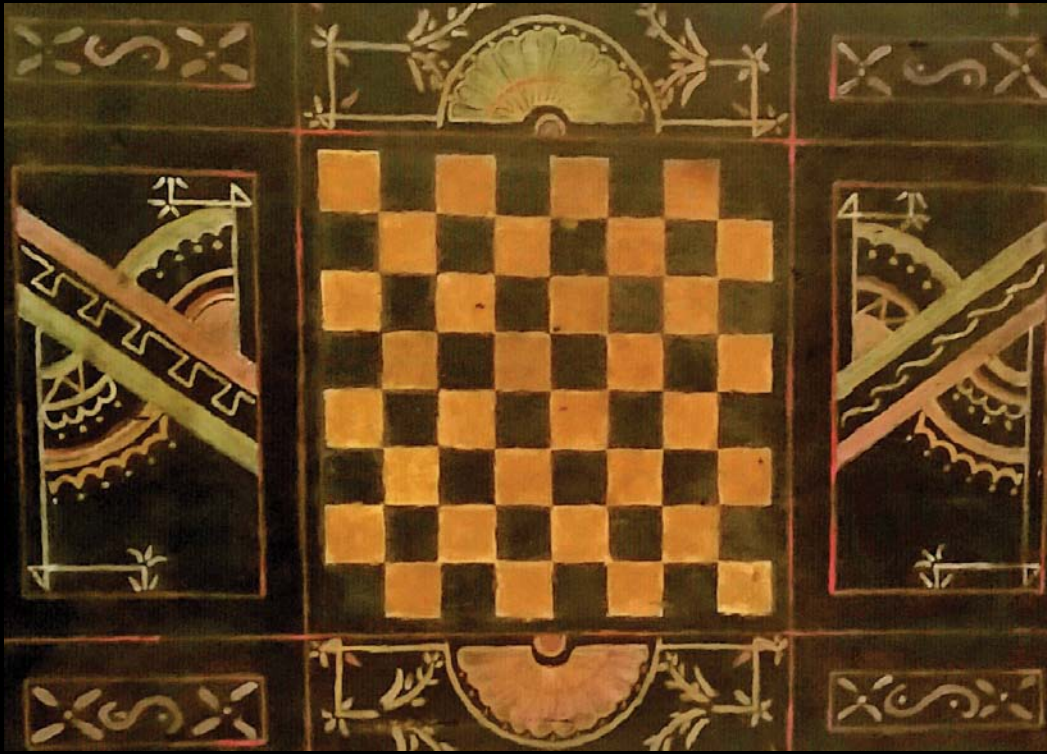


New Hampshire Antiques Show

SPECIAL SHOW SECTION

THE NORWOODS' SPIRIT OF AMERICA CHOICE AMERICANA OF THE 18TH AND 19TH CENTURIES

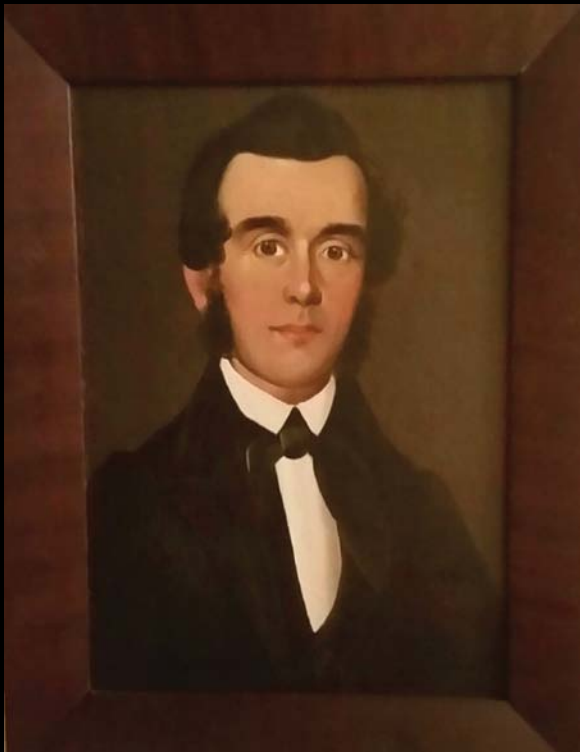
Portraits Sculpture The Greens Trade Signs Watercolors Folk Art Fraktur Hoeked Rugs Needlework Painted Smalls



Coach-painted polychromed gameboard, with square-nailed construction



Portrait of a coy 19th century female, Prior Hamblin School



Portrait of a dashing 19th century male, Prior Hamblin School



American clipper ship flying our nation's flag, oil on canvas, 19th century



Running horse weathervane, original surface, circa 1880.



Painted wooden trade sign for a 19th century hatter

DOUG AND BEV NORWOOD

410.252.2012  spiritofamerica@comcast.net



New Hampshire Antiques Show

SPECIAL SHOW SECTION



DENNIS & DAD ANTIQUES, Fitzwilliam, N.H. — Three graduated “Tulip and Sawtooth” Flint glass compotes, circa 1860, 9¾, 8½ and 7½ inches high



PETER SAWYER, Exeter, N.H. — A New Hampshire maple chest on chest, school of Peter Bartlett, Salisbury, N.H.



SCOTT BASSOFF / SANDY JACOBS ANTIQUES, Swampscott, Mass. — Georgian rose cut diamond silver set ring.



M. FINKEL & DAUGHTER, Philadelphia — Small and folky silk embroidery of a courting couple with a large house in the background. It is very appealing with wonderful imagery and detail throughout and measures 5 by 8 inches sight.



NEVERMORE ANTIQUES, Dover, N.H. — Pig redware bank from Pennsylvania dating from the Nineteenth Century.

Melissa Alden

PO Box 998 Portsmouth, New Hampshire 03802

Tel: 603.501.9911 • email: mscarter@rcn.com





New Hampshire Antiques Show

SPECIAL SHOW SECTION

NEVERMORE
Antiques
Sandra Cutchin

81 Littleworth Road
Dover, N.H. 03820
603-750-8025



Some of the
antiques
to be seen
in my booth!



**SEE YOU AT
BOOTH #18**

Email:
nevermore2@comcast.net





New Hampshire Antiques Show

SPECIAL SHOW SECTION



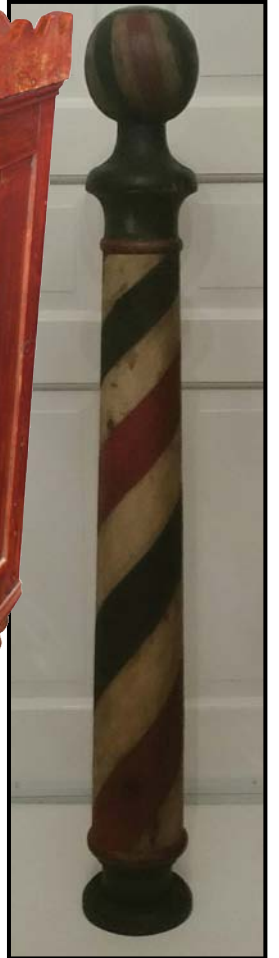
NEWSOM & BERDAN, Thomasville, Penn. — American carved and paint-decorated rooster from the Nineteenth Century.



NANCY & CRAIG CHENEY, Mansfield, Ohio — Horse pull toy with wooden wheels, Nineteenth Century, in as-found condition and with nice form.



JASON SAMUEL FINE ART, Milford, N.H. — Nineteenth Century cupboard with red wash.



THE NORWOODS' SPIRIT OF AMERICA, Timonium, Md. — Painted wooden barber pole.



JOHN D. GOULD, Yorktown Heights, N.Y. — Painted box with family history.



JOHN ROGERS ANTIQUES, CAFS, LLC, Elkins, N.H. — Large American ash burl bowl measuring 20¼ inches wide, 7½ inches deep.



MG ART & ANTIQUES

Merrimac, MA
603-642-8948
Booth #5



Come to New Hampshire for great New York Stoneware!



New Hampshire Antiques Show

SPECIAL SHOW SECTION

Mary & Joshua Steenburgh

Pike, NH

603-303-3072

Come see us in booth 21 at the NHADA Show !!



Holy Cow Weathervane - 27 x 18 in. full bodied copper vane with cast zinc head.



Wooden Beehive. Made from pine and dated on the inside 1921 it measures 17 inches tall by 18 inches in diameter in original surface.

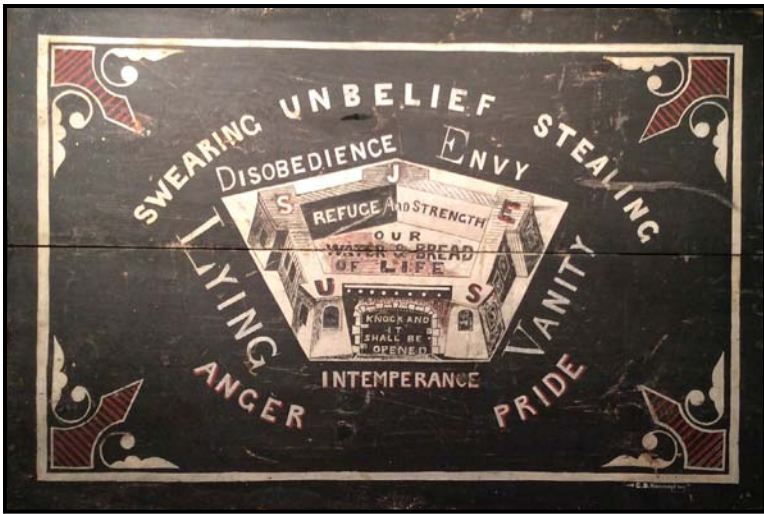


19th c. double side trade sign for J. Whitney found in NY. 39 inches tall and 41 inches wide on pine with wrought iron elements. Untouched 19th c. original surface.



New Hampshire Antiques Show

SPECIAL SHOW SECTION



JEWETT-BERDAN, Newcastle, Maine — Rare Temperance board in the original paint, signed C.D. Norman and dating from the mid-Nineteenth Century.



ED WEISSMAN, Naples, Fla. — Oval Shaker paint-decorated and stenciled spice box, signed EM Clark, 6 by 8¾ inches, along with two other “little gems.”



STEVEN STILL ANTIQUES, Manheim, Penn. — Charles G. Bush kaleidoscope mold, circa 1840, only five inches in height.



PETER SAWYER, Exeter, N.H. — A very rare shelf clock attributed to John Taber, Berwick, Maine, with its original glass.



MG ART & ANTIQUES, Merrimac, Mass. — Uncommon Red Cross candle lantern with leather wrapped handle.



JASON SAMUEL

FINE ART AND ANTIQUES



Rare labeled New York sideboard from the workshop of Andrew Anderson Retaining original brass. Circa 1790-1810

THE GALLERY AT NEW HAMPSHIRE ANTIQUE CO-OP
323 ELM STREET/RTE 101A
MILFORD NH 03055

Just 30 minutes west of Manchester • 20,000 square foot antique shop & fine art gallery

603.673.8499 • NHANTIQU.COOP.COM



New Hampshire Antiques Show

SPECIAL SHOW SECTION

Catch A Keeper at the NHADA SHOW



Fish Weathervane

J.W. Fiske & Co. N.Y.

c. 1875-1885

Exceptional Verdgris & Gilded Surface

Michael Whittemore

Antiques & Folk Art



980 Coronado Drive, Punta Gorda, Florida 33950

860-428-1135



New Hampshire Antiques Show

SPECIAL SHOW SECTION



GARY F. YEATON ANTIQUES, Concord, N.H. — New Hampshire Chippendale tiger maple slant-lid desk attributed to Jonathan Ross of Gilman-ton, N.H., circa 1780. Complete family history available to purchaser.



AXTELL ANTIQUES, Deposit, N.Y. — Nantucket toy sailor whirligig in the original paint.



JEFF & HOLLY NOORDSY, ART & ANTIQUES, Cornwall, Vt. — Important English seal bottle dated 1776.

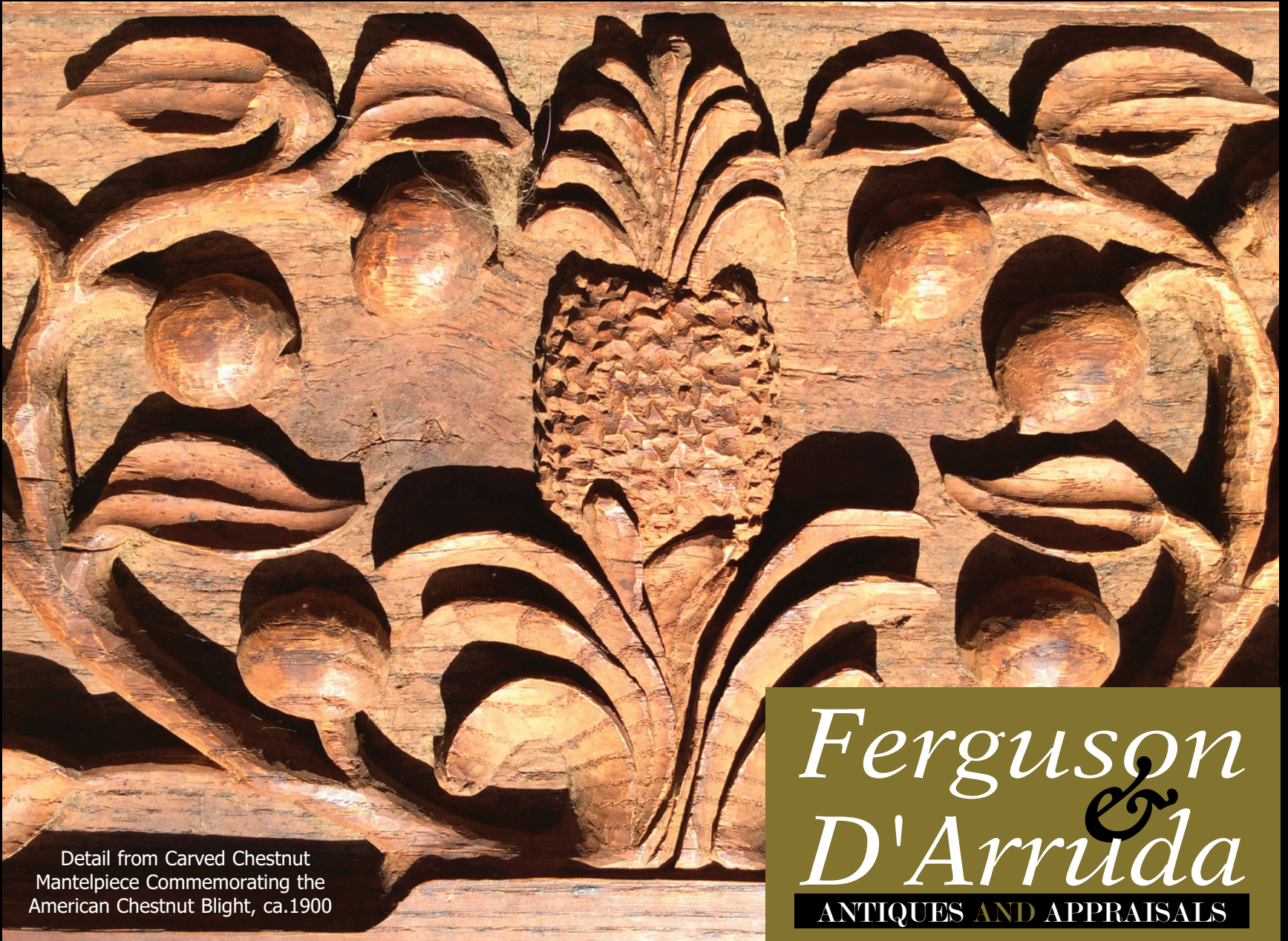


RJG ANTIQUES, Russ & Karen Goldberger, Rye, N.H. — This oversized redbreasted merganser drake decoy, George Huey (1866–1947), Friendship, Maine, dates circa 1920s and measures 19½ inches long. This superb example has inlaid neck and carved raised wings and is in excellent original condition and paint.

JOHN ROGERS ANTIQUES, CAFS, LLC, Elkins, N.H. — American ash oval burl bowl with untouched finish, measuring 14½ by 13¼ by 5 inches.



1 Main Street, Swansea, Mass. 02777 | 508-674-9186 | www.ferguson-darruda.com



Detail from Carved Chestnut Mantelpiece Commemorating the American Chestnut Blight, ca.1900

Ferguson & D'Arruda
ANTIQUES AND APPRAISALS



New Hampshire Antiques Show

SPECIAL SHOW SECTION

JUDITH & JAMES MILNE

917 402 1778 | www.milneathomeantiques.com

A BANNER YEAR

(All acquired from a private collection)



AT HOME ANTIQUES
81 BROADWAY
KINGSTON, NY
347 331 2242
milneinc@aol.com

Booth #14

Dennis & Dad Antiques

Ann & Dennis Berard

33 NH Route 119E, Fitzwilliam, NH 03447

603-585-9479



Manchester, NH



MEMBER



Large lug handled Sunderland Pottery Jug with 11 transfer scenes, 11 3/4" high, CA 1820.



Early English puzzle jug with sunburst & floral decoration, 11" high, CA 1820



Two Early English Cow Creamers, CA 1820.



From our large selection of early 19th century English Mocha



New Hampshire Antiques Show

SPECIAL SHOW SECTION



ROBERT T. FOLEY ANTIQUES, Gray, Maine — Fine, early soft paste mug.



JEF & TERRI STEINGREBE, New London, N.H. — Half-duck decoy on a blue painted panel.



KEN & ROBIN PIKE, Nashua, N.H. — Carved wood Uncle Sam whimsy measuring 12 inches tall and dating from the late Nineteenth Century.



DENNIS & DAD ANTIQUES, Fitzwilliam, N.H. — From our large selection of children's Nineteenth Century plates and mugs.



BILL KELLY, Limington, Maine — Eighteenth Century fan crested banister back armchair, likely New Hampshire origin and in the original structural condition.

Discover The Source



ED WEISSMAN

Booth # 49

A NEW HAMPSHIRE TREASURE

“BLAIR COVERED BRIDGE, NH”

BY

**ROBERT EMMETT OWEN
(1878 - 1957)**

Oil on Canvas, Titled: *Verso*
Signed LR
28 x 38”
Fr: 30 1/2 x 40 1/2”

THIS BRIDGE IS LOCATED NEAR
CAMPTON, NH IN THE FOOTHILLS OF
THE WHITE MOUNTAINS.



8805 Tamiami Tr. N. #108
Naples, FL 34108

email: Quillcutter@comcast.net

Shows or by Appointment
(239) 450-5585



New Hampshire Antiques Show

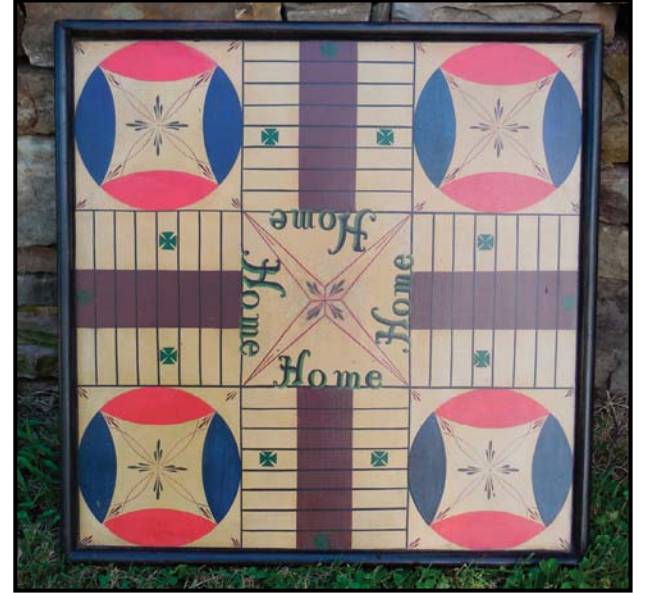
SPECIAL SHOW SECTION



KATE A. ALEX & CO., Warner, N.H. — Molded copper full-bodied cow weathervane with zinc head, applied horns, and sheet copper ears. It is attributed to Cushing, circa 1890, and measures 24½ inches long and 15½ inches tall.



GAIL & DON PIATT, Contoocook, N.H. — Ten “cock robin” stacking boxes.



PRATT'S ANTIQUES, Victor, N.Y. — Beautifully executed six-color gameboard, circa 1900, 19 inches square.



PAUL & LINDA DeCOSTE, West Newbury, Mass. — A green star decorated oval finger lapped box.



THE NORWOODS' SPIRIT OF AMERICA, Timonium, Md. — Painting of five piglets.

FRED.GIAMPIETRO

FOLK ART
AMERICANA
MODERN



1064 Chapel St.
New Haven, CT 06510
203.777.7760

Gallery Hours
T-Sa 10-6 or by appointment

WWW.FREDGIAMPIETRO.COM



New Hampshire Antiques Show

SPECIAL SHOW SECTION

★ KATE A. ALEX ★

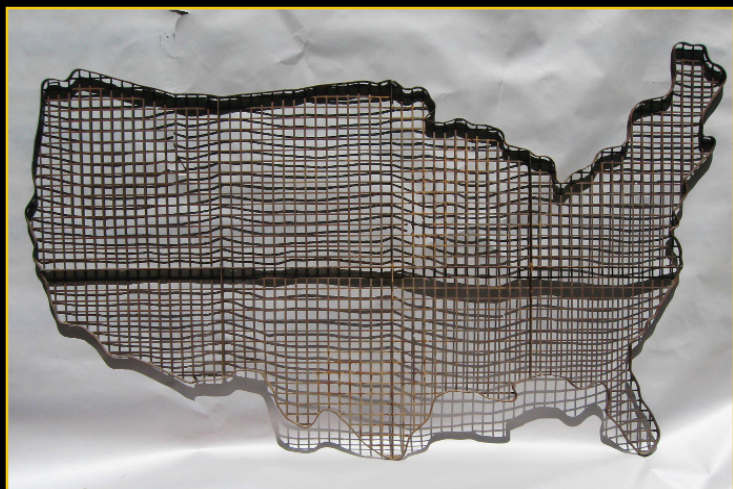
Beaver Bog Rd., Warner, NH 03278
603-491-1499



LARGE PR. OF BRONZE GARDEN PIER CAP LIGHTS HAVING FLAME FINIAL TOP WITH FOUR FROSTED GLASS PANELS, SUPPORTED ON SCROLLING BASE. 38"H X 12" BASE



MOULDED COPPER FULL BODIED "DEXTER" RUNNING HORSE WITH CAST ZINC HEAD. ATTRIBUTED TO CUSHING AND WHITE, LATE 19TH CENTURY WITH CUSTOM STAND. 40" LONG



FOLKY WROUGHT FRAME AND STEEL MESH MAP DEPICTING THE SHAPE OF THE GOOD OLE UNITED STATES, 76" LONG X 46" H.

Missouri Plain Folk — Country Furniture & Folk Art

We are Tim and Charline Chambers. Our friends in the antiques business know us as Missouri Plain Folk. Born and raised in the Midwest, we have always been intrigued by the material culture found on early farms and in rural communities. What started in our native Missouri became an appreciation over the years for similar objects from other regions across the country.

Since the beginning, our focus has remained on country furniture and folk art, with an emphasis on color, surface, form and condition.

Our interest in handmade painted gameboards culminated in the publishing of *Art of the Game*, a full-color hardcover book showcasing the collection of Selby Shaver.



Tim and Charline Chambers



JOHN D. GOULD, Yorktown Heights, N.Y. — Folky stage coach with four horses.



JEF & TERRI STEINGREBE, New London, N.H. — A double chicken hooked rug.

New Hampshire Antiques Show

Radisson Hotel
Manchester, NH
August 6 - 8, 2015





New Hampshire Antiques Show

SPECIAL SHOW SECTION



NEVERMORE ANTIQUES, Dover, N.H. — Spalted maple Betty lamp stand, New England, dating from the early Nineteenth Century.



19th C folding gameboard, with backgammon on the reverse measuring 14" square.



C 1850 Milliners Head. Papier mache original condition.



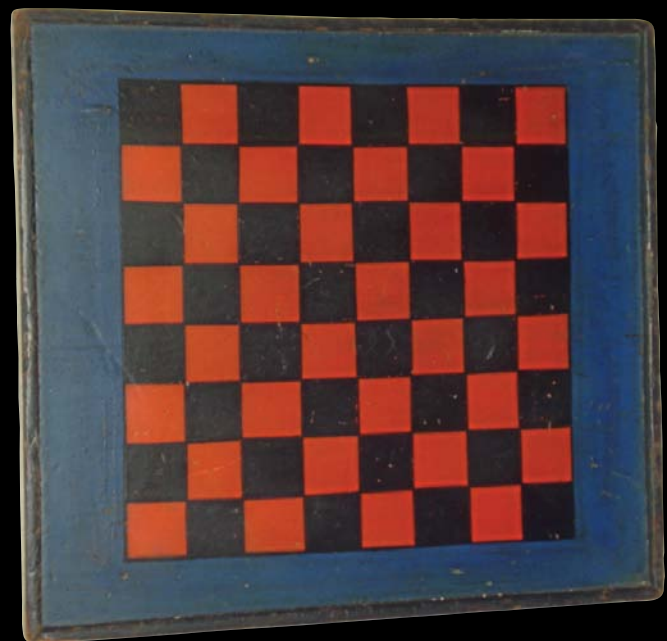
THOMAS M. THOMPSON ANTIQUES, Pembroke, N.H. — Squirrel sculpture, hand carved wood, holding a real nut, measuring 8½ inches tall.



RJG ANTIQUES, Russ & Karen Goldberger, Rye, N.H. — Boldly turned patriotic barber pole, probably Koken Barber Supply, St Louis, Mo., circa 1890. The pole, 29 inches long and 3 inches in diameter, has an undisturbed original condition in its original red, white, blue and gold surface.



NEWSOM & BERDAN, Thomasville, Penn. — Nineteenth Century decorated tole coffee pot, Pennsylvania.



19th C checkerboard with molded edges, measuring 15½" x 17"

KEN & ROBIN PIKE



43 Ayer Road
Nashua, NH 03064

603-882-3367 • rrpcc101a@comcast.net



New Hampshire Antiques Show

SPECIAL SHOW SECTION



JASON SAMUEL FINE ART, Milford, N.H. — This Nineteenth Century chalkware apple bank with polychrome decoration is from the Roger Bacon collection.



RESSER-THORNER ANTIQUES, Manchester, N.H. — Staffordshire plate of an American ship, 9 3/4 inches in diameter.



AXTELL ANTIQUES, Deposit, N.Y. — Scherenschnitte woven paper heart and hand.

New Hampshire Antiques Show
August 6 - 8, 2015



RJG ANTIQUES, Russ & Karen Goldberger, Rye, N.H. — This Old Home trade sign from Maine dates from the late Nineteenth Century and measures 5 1/2 inches long and 8 inches high. It is pine with beveled edges, gold lettering on black sand background, and is in original pristine condition.



DENNIS & DAD ANTIQUES, Fitzwilliam, N.H. — "Grazing Rabbits" oval transferware decorated dish, 10 inches wide, circa 1820.

Bob Withington

207 Market Street
Portsmouth, NH
603-498-4778



Comet Weathervane, copper and lead with terrific verdigris, 14" x 26", attributed to J. Howard, Bridgewater, Mass., c. 1880.



New Hampshire Antiques Show

SPECIAL SHOW SECTION



JEWETT-BERDAN, Newcastle, Maine — The Collins family schoolgirl memorial wrought by Jane Collins, 1826. It is all original including the frame and eglomise mat.



ED WEISSMAN, Naples, Fla. — A wonderful Seventeenth Century Spanish Colonial (Mexico) paint-decorated keepsake cabinet, measuring 13 inches high, 20½ inches wide and 11½ inches deep.



PETER SAWYER, Exeter, N.H. — Rare dwarf clock in bird's-eye maple.



MG ART & ANTIQUES, Merrimac, Mass. — Early Twentieth Century tin-lined leather cordite carrier.



MICHAEL & LUCINDA SEWARD, Pittsford, Vt. — Nineteenth Century red-ware coin bank.



HOT DOG!

WE'RE HEADED TO THE NEW HAMPSHIRE ANTIQUE SHOW



DOUBLE SIDED TRADE SIGN. 5' LONG.

WWW.MISSOURI PLAIN FOLK.COM

573-620-5500

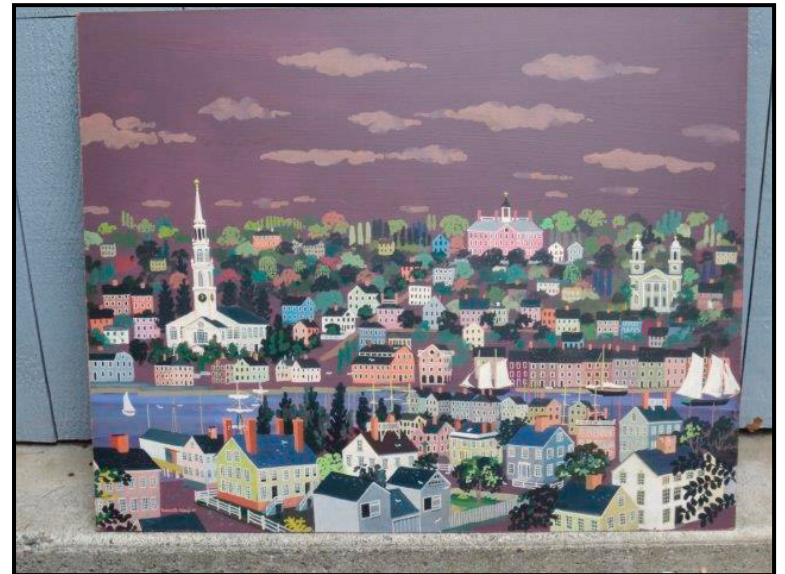


New Hampshire Antiques Show

SPECIAL SHOW SECTION



MISSOURI PLAIN FOLK, Sikeston, Mo. — Early miniature bracket base blanket box in the original red surface. It has one old repair to the lid and measures 6¼ by 3½ inches, and 4 inches tall.



JOHN D. GOULD, Yorktown Heights, N.Y. — Oil on Masonite measuring 24 by 30 inches and signed Maxwell Mays, 1964.



MICHAEL & LUCINDA SEWARD, Pittsford, Vt. — Red-eyed vireo, one of a collection of Peter Peltz birds.



GAIL & DON PIATT, Contoocook, N.H. — Small Shaker boxes ranging from 6 by 2 inches to 4 by 1½ inches.



BILL KELLY, Limington, Maine — Rare Bennett & Chollar, Homer, N.Y., 2-gallon ovoid stoneware jar with lid, circa 1835.



Scott Bassoff Sandy Jacobs ANTIQUES

Swampscott, MA 01907

603.801.5532 mobile

www.sandyjacobsantiques.com

sandyjnh1@gmail.com

www.scottbassoffsandyjacobsantiques.com





New Hampshire Antiques Show

SPECIAL SHOW SECTION



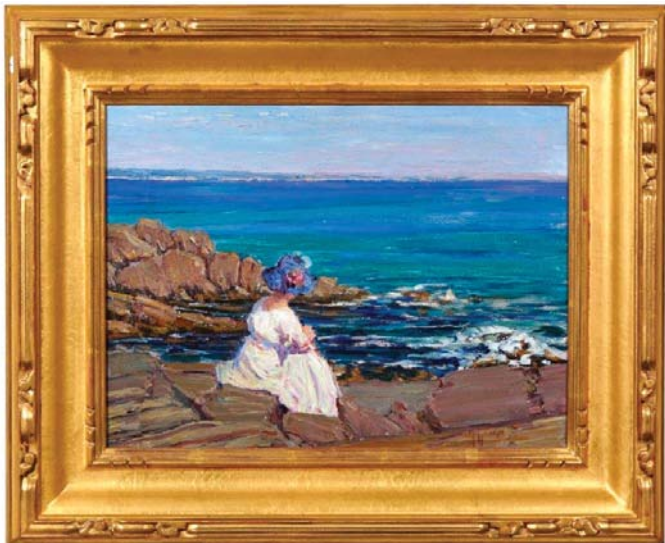
NEVERMORE ANTIQUES, Dover, N.H. — Dating from the Seventeenth Century, a redware trumpet candlestick.



KATE A. ALEX & CO., Warner, N.H. — Large, fabulous wool work and paper anchor in a deep shadowbox frame, circa 1880, measuring 40½ inches high and 28½ inches wide.



GARY F. YEATON ANTIQUES, Concord, N.H. — New Hampshire Chippendale four-drawer graduated chest in maple with original surface and brasses, circa 1780. Fabulous base with carved fan center drop.



PETER SAWYER, Exeter, N.H. — "Turn the Tide," Ogunquit, Maine, Harry Leslie Hoffman (1871-1964).

JOHN ROGERS ANTIQUES, CAFS, LLC, Elkins, N.H. — Half-round pineapple butter print with the original "shelf," 2 inches thick.



Water cooler from N.H. lakes paddle boat, last quarter 19th c.

PEWTER & WOOD ANTIQUES

Barbara Boardman Johnson
Enfield, NH

603 632 9822 c. 602 677 5686

Shop hours by appointment

www.pewterandwoodantiques.com

info@pewterandwood.com





New Hampshire Antiques Show

SPECIAL SHOW SECTION

AUTHOR BOOK SIGNING

Soldier, Engraver, Forger

“Richard Brunton’s Life on the Fringe
in America’s New Republic”*

by Deborah M. Child

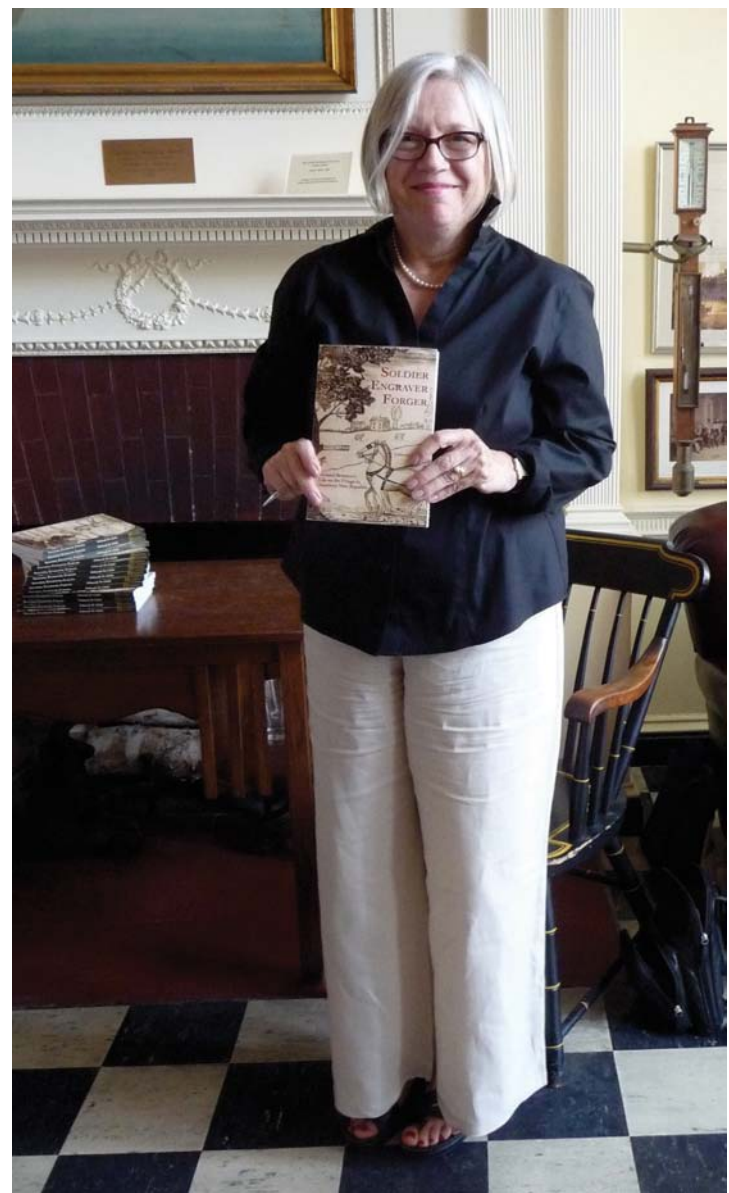
“Most early Americans led lives below the level of the rich and famous and have passed silently into history. Brunton—an immigrant, a soldier, a deserter, a convicted felon, a recidivist, and probably an alcoholic—trode an unusual path that led him down many alleys in his unique journey. Despite his personal shortcomings and issues, Brunton’s skills enabled him to create lasting works that contributed to the visual culture of his era. In *Soldier, Engraver, Forger*, Deborah Child has utilized all the scholarly tools and skills of the modern historian to develop an engaging and fascinating portrait of this heretofore little-known artist and personality of early New England.”

Gerald W.R. Ward

Senior Consulting Curator and the Katharine Lane Weems Senior Curator of American Decorative Arts and Sculpture Emeritus

MUSEUM OF FINE ARTS, BOSTON

*(New England Historic Genealogical Society, 2015)



The 58th Annual New Hampshire Antiques Show
Radisson Hotel Manchester
Thursday, August 6, 2015
2pm - 4pm



New Hampshire Antiques Show

SPECIAL SHOW SECTION



CHERRY GALLERY, Damariscotta, Maine — Rustic bark-clad hanging corner cupboard with wood-trimmed panels, acorn accents and a scroll top, circa 1900, measuring 20 inches wide, 35 inches high and 11½ inches deep.



PAUL & LINDA DeCOSTE, West Newbury, Mass. — A selection of mocha.



DENNIS & DAD ANTIQUES, Fitzwilliam, N.H. — Fitzhugh covered vegetable dish with strap handles, 12½ inches wide.



MICHAEL & LUCINDA SEWARD, Pittsford, Vt. — Carving of a curlew by Mark Holland.



JEF & TERRI STEINGREBE, New London, N.H.



Antique Quilts and Fine Design Jewelry

Darnestown, MD
(outside Washington, DC)
301-948-4187
stellarubin@verizon.net

www.stellarubin.com



Unusual Alphabet Quilt found in Berks County, Pennsylvania, circa 1890
Illustrated in both Lipman and Winchester's *The Flowering of American Folk Art* and Safford and Bishop's *America's Quilts and Coverlets*



New Hampshire Antiques Show

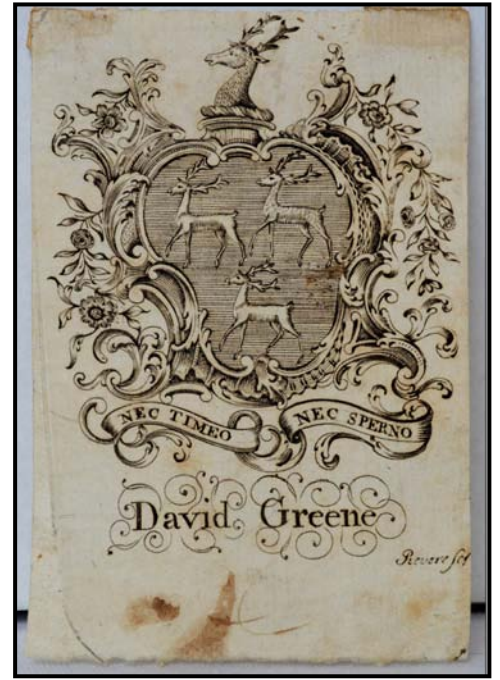
SPECIAL SHOW SECTION



THE NORWOODS' SPIRIT OF AMERICA, Timonium, Md. — Southern Pennsylvania Nineteenth Century fraktur, delightful hues and form.



MG ART & ANTIQUES, Merrimac, Mass. — An Easter rabbit chocolate mold, 18 inches tall.



RESSER-THORNER ANTIQUES, Manchester, N.H. — David Greene bookplate engraved and signed by Paul Revere.



KATE A. ALEX & CO., Warner, N.H. — Rare matching pair of early pine bookcases having step down shelves and two dovetailed drawers. They are all original and measure 54½ inches high and 43 inches wide.



JEFF & HOLLY NOORDSY, ART & ANTIQUES, Cornwall, Vt. — Selections from our inventory of early American bottles, glass and blown tableware.

AMERICAN GILT FRAMES MAINLY 1810-1870



*Over 500 frames
available in stock*



Need specific frame sizes?
Call us to bring them.

John D. Gould

P.O. Box 251

Yorktown Heights, NY

10598

914-245-2481

www.johngouldantiques.com



New Hampshire Antiques Show

SPECIAL SHOW SECTION

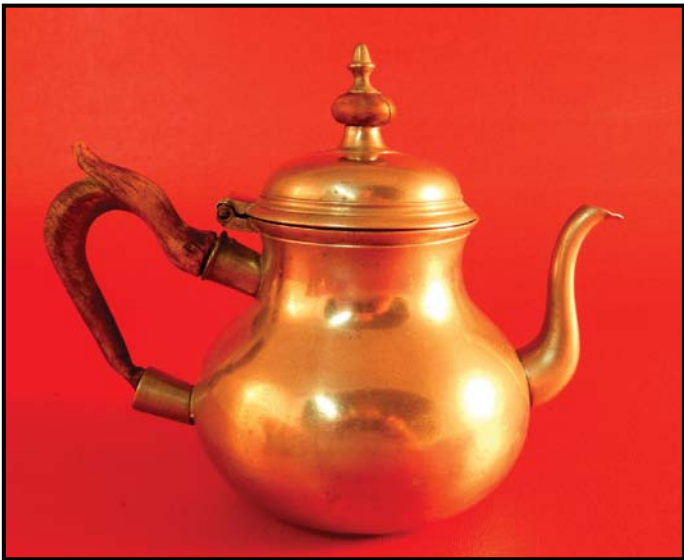
STEPHEN-DOUGLAS, Rockingham, Vt. — One of a set of four paint-decorated country Windsor chairs, circa 1825-35, with the original decoration and a beautiful aged patina.



JASON SAMUEL FINE ART, Milford, N.H. — Portrait of a child with drum dating from the Nineteenth Century.



PRATT'S ANTIQUES, Victor, N.Y. — Decorated green oval storage box, circa 1830-40, measuring 8½ inches high, 17½ inches wide and 12½ inches deep.



JEWETT-BERDAN, Newcastle, Maine — A small sample of choice country painted smalls to be shown.



BETTE & MELVYN WOLF, INC, Flint, Mich. — Pear-shape teapot, 6 inches tall, by Richard King, London, circa 1750.



The Sugarplum

Anne & Garrett Rowe

Wilmot, N.H.

603-768-3925

thesugarplum@comcast.net

Antiques from the garden



New Hampshire Antiques Show

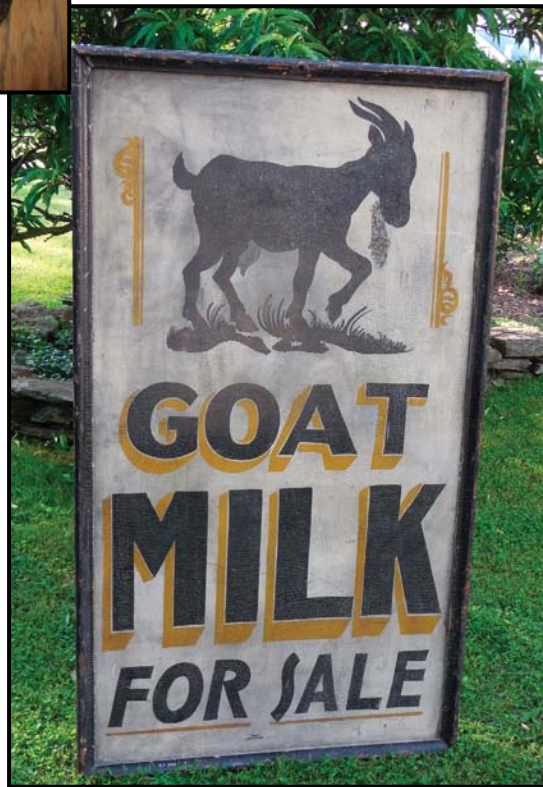
SPECIAL SHOW SECTION



NEVERMORE ANTIQUES, Dover, N.H. — Hooked rug, wool, New England, Nineteenth Century.



JOHN D. GOULD, Yorktown Heights, N.Y. — One of three rope-twist frames in various sizes.



PRATT'S ANTIQUES, Victor, N.Y. — Goat milk sign from Western New York State, circa 1940, 32 by 56 inches.



ED WEISSMAN, Naples, Fla. — An exceptional Japanese fluted porcelain "Black Ship Bowl," late Eighteenth Century, 11½ inches in diameter.



MISSOURI PLAIN FOLK, Sikeston, Mo. — Folky paint-decorated gameboard, circa 1900, in the original surface and condition. It measures approximately 17 inches square.

Douglas L. Solliday

11 South Ninth Street, Columbia, Missouri 65201
573-268-3150 cell • email: dlsolliday@tranquility.net



Navajo Germantown weaving 1890-1910. Exceptional color and design, 50x80"



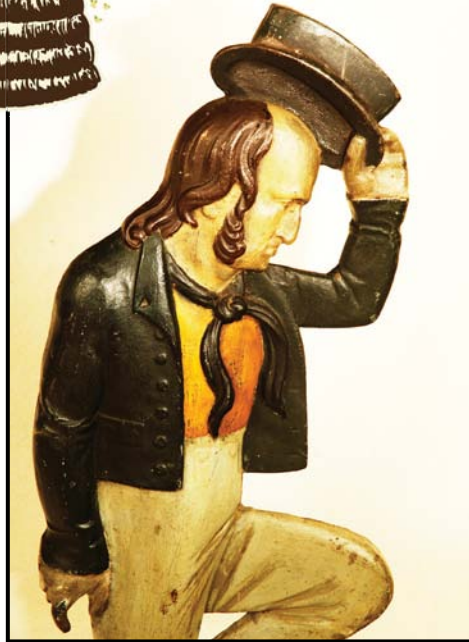
New Hampshire Antiques Show

SPECIAL SHOW SECTION



BILL KELLY, Limington, Maine — Graphic red and black decorated frame, circa 1830, of New England origin with a 10-by-14-inch opening.

GARY F. YEATON ANTIQUES, Concord, N.H. — Federal mahogany chamber table - Massachusetts or coastal New Hampshire - circa 1810.



RJG ANTIQUES, Russ & Karen Goldberger, Rye, N.H. — Painted cast iron ship chandlery shop sign, American, circa 1870-80, measures 23 inches tall with a 13-inch diameter base. It shows excellent casting and original paint detail.



NEWSOM & BERDAN, Thomasville, Penn. — Whiskey Drinking Positively Prohibited sign nailed to a yellow shoe foot sign board.



PAUL & LINDA DeCOSTE, West Newbury, Mass. — A gilded copper schooner weathervane, American, early Twentieth Century.

Cherry Gallery



Mural-size oil on masonite portrayal of flora and fauna in an eastern woodland, circa 1940 (sight size: 4' x 8')

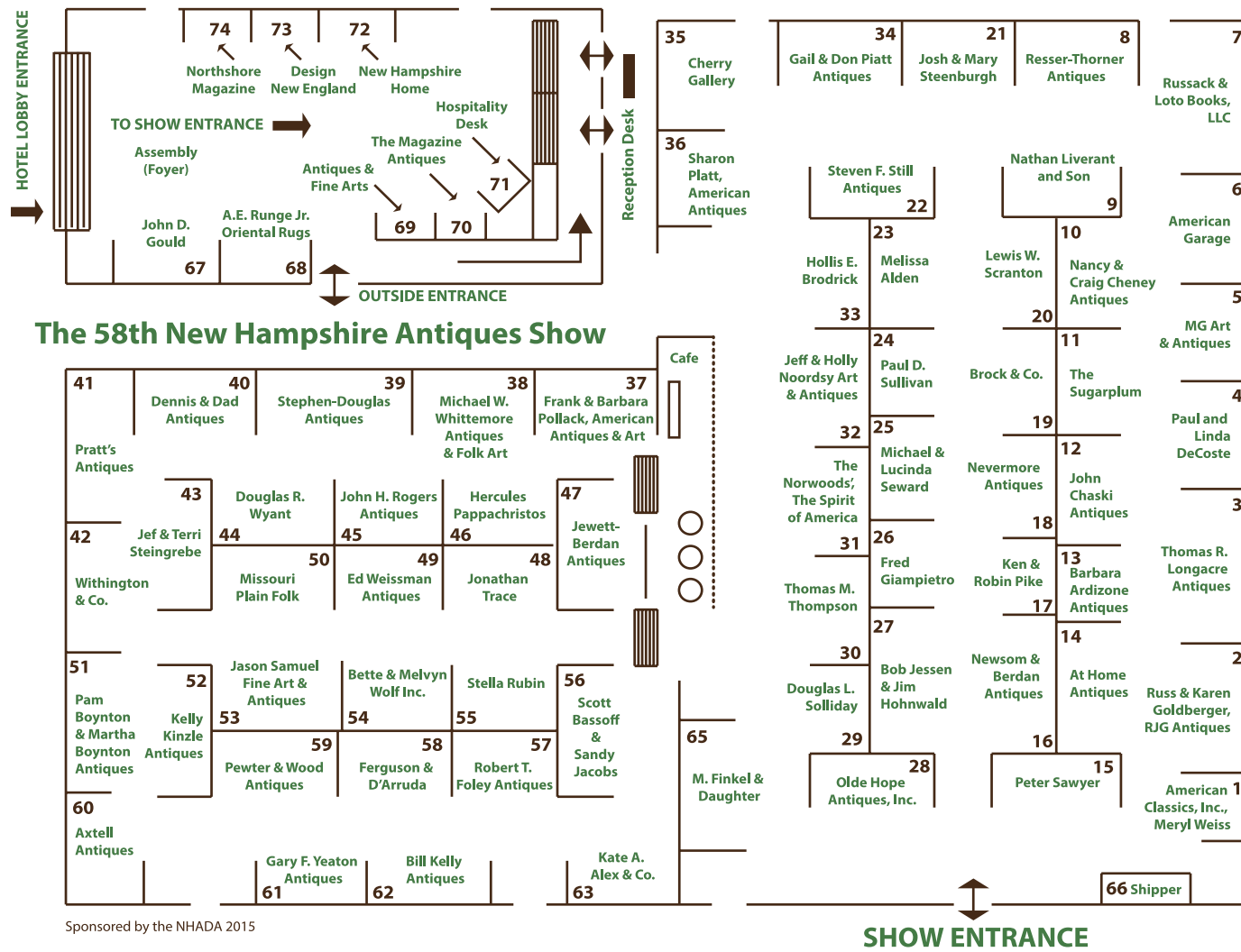
Damariscotta, ME 207.563.5639 cherrygallery.com



New Hampshire Antiques Show

SPECIAL SHOW SECTION

2015 NHADA EXHIBITOR LIST



Sponsored by the NHADA 2015

Melissa Alden, Portsmouth, NH
 Kate A. Alex & Co., Warner, NH
 American Classics, Inc./ Meryl Weiss, Canaan, NH
 American Garage, Los Angeles, CA
 Barbara Ardizone Antiques, Salisbury, CT
 At Home Antiques, Kingston, NY
 Axtell Antiques, Deposit, NY
 Scott Bassoff and Sandy Jacobs, Swampscott, MA
 Martha Boynton Antiques, Groton, MA
 Pam Boynton, Groton, MA
 Brock & Co., Concord, MA
 Hollis Brodrick, Portsmouth, NH
 John Chaski Antiques, Camden, DE
 Nancy & Craig Cheney Antiques, Mansfield, OH
 Cherry Gallery, Damariscotta, ME
 Paul & Linda DeCoste, West Newbury, MA
 Dennis & Dad Antiques, Fitzwilliam, NH
 Ferguson & D'Arruda, Providence, RI
 M. Finkel & Daughter, Philadelphia, PA
 Robert T. Foley Antiques, Gray, ME
 Fred Giampietro, New Haven, CT
 Russ & Karen Goldberger -- RJG Antiques, Rye, NH
 John D. Gould, Yorktown Heights, NY
 Bob Jessen & Jim Hohnwald, Fitzwilliam, NH
 Jewett-Berdan Antiques, Newcastle, ME
 Bill Kelly Antiques, Limington, ME
 Kelly Kinzle Antiques, New Oxford, PA
 Nathan Liverant and Son, LLC, Colchester, CT
 Thomas R. Longacre Antiques, Marlborough, NH
 MG Art & Antiques, Merrimac, MA
 Missouri Plain Folk, Sikeston, MO
 Nevermore Antiques, Dover, NH
 Newsom & Berdan Antiques, Thomasville, PA
 Jeff & Holly Noordsy Art and Antiques, Cornwall, VT

Booth 23
 Booth 63
 Booth 1
 Booth 6
 Booth 13
 Booth 14
 Booth 60
 Booth 56
 Booth 51
 Booth 51
 Booth 19
 Booth 33
 Booth 12
 Booth 10
 Booth 35
 Booth 4
 Booth 40
 Booth 58
 Booth 65
 Booth 57
 Booth 26
 Booth 2
 Booth 67
 Booth 27
 Booth 47
 Booth 62
 Booth 52
 Booth 9
 Booth 3
 Booth 5
 Booth 50
 Booth 18
 Booth 16
 Booth 32

The Norwoods', The Spirit of America, Timonium, MD
 Olde Hope Antiques, Inc., New Hope, PA
 Hercules Pappachristos, Derry, NH
 Pewter & Wood Antiques, Enfield, NH
 Gail & Don Piatt Antiques, Contoocook, NH
 Ken & Robin Pike, Nashua, NH
 Sharon Platt American Antiques, Portsmouth, NH
 Frank & Barbara Pollack American Antiques & Art,
 Highland Park, IL / Sunapee, NH
 Pratt's Antiques, Victor, NY
 Resser-Thorner Antiques, Manchester, NH
 John H. Rogers Antiques, New London, NH
 Stella Rubin, Darnestown, MD
 A.E. Runge Jr. -- Oriental Rugs, Yarmouth, ME
 Russack & Loto Books, LLC, Northwood, NH
 Jason Samuel Fine Art & Antiques, Milford, NH
 Peter Sawyer, Exeter, NH
 Lewis W. Scranton, Killingworth, CT
 Michael & Lucinda Seward, Pittsford, VT
 Douglas L. Solliday, Columbia, MO
 Mary & Joshua Steenburgh, Pike, NH
 Jef & Terri Steingrebe, New London, NH
 Stephen-Douglas Antiques, Rockingham, VT / Walpole, NH
 Steven F. Still Antiques, Manheim, PA
 The Sugarplum, Wilmot, NH
 Paul D. Sullivan, Manchester, NH
 Thomas M. Thompson, Pembroke, NH
 Jonathan Trace, Portsmouth, NH
 Ed Weissman Antiques, Naples, FL
 Michael Whittemore Antiques & Folk Art, Punta Gorda, FL
 Withington & Co, Portsmouth, NH
 Bette & Melvyn Wolf Inc., Flint, MI
 Douglas Wyant, Cassopolis, MI
 Gary F. Yeaton Antiques, Concord, NH

Booth 31
 Booth 28
 Booth 46
 Booth 59
 Booth 34
 Booth 17
 Booth 36
 Booth 37
 Booth 41
 Booth 8
 Booth 45
 Booth 55
 Booth 68
 Booth 7
 Booth 53
 Booth 15
 Booth 20
 Booth 29
 Booth 21
 Booth 43
 Booth 39
 Booth 22
 Booth 11
 Booth 24
 Booth 30
 Booth 48
 Booth 49
 Booth 38
 Booth 42
 Booth 54
 Booth 44
 Booth 61

