

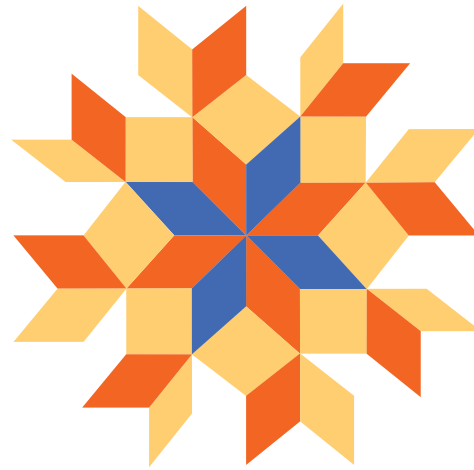
PART ONE



Antiques In Manchester

PARTICIPATING DEALERS

A Bird in Hand
 Mark and Marjorie Allen
 American Sampler
 American Spirit Antiques
 Diana H. Bittlel
 Joan Brownstein
 Colette Donovan
 Dover House
 Peter H. Eaton Antiques Inc.
 Emele's Antiques*
 J & R Ferris Antiques LLC
 Samuel Forsythe
 Pat and Rich Garthoeffner
 Garvey Rita Art and Antiques
 Gemini Antiques
 James and Nancy Glazer*
 David Good
 Norman Gronning Antiques
 Heller Washam Antiques
 Samuel Herrup Antiques
 Wayne and Phyllis Hilt*
 Michael Hingston Antiques
 Stephen & Carol Huber
 James M. Kilvington, Inc.
 Greg Kramer & Co.
 Langenbach's Fine Art & Antiques
 James Wm. Lowery Fine Antiques and Arts
 Sheridan Loyd
 Mad River Antiques LLC*
 John Hunt Marshall
 Joe Martin
 Hilary and Paulette Nolan
 Daniel and Karen Olson
 Don Olson Fine American Antiques and Folk Art
 Oriental Rugs Ltd.
 Steven S. Powers
 James L. Price Antiques
 Derik Pulito
 Dennis Raleigh Antiques & Folk Art*
 RGL Antiques
 John Keith Russell
 Saltbox Antiques
 Elle Shushan
 Lana Smith
 Elliott and Grace Snyder
 Robert Snyder and Judy Wilson
 Jeffrey Tillou Antiques
 The Village Braider/Thomas Clark
 Jane F. Wargo*
 Paul and Karen Wendhiser
 Chuck White
 Charles Wilson and Phyllis Wilson,
 American Folk Art and Antiques*
 David A Zabriskie*
 * New dealers this year



Antiques In Manchester

2015

The Collector's Fair



We've Moved!



Come see our wonderful new location!

Sullivan Arena, on the beautiful campus of St. Anselm College, Manchester, NH

Wednesday, August 5
 11 am - 7 pm

Thursday, August 6
 12 pm - 6 pm

The 4th Annual Show Featuring a Select Group
 of America's Most Respected Art and Antiques Dealers.

Free Parking • Cafe • Air Conditioned
 Admission \$15.00 • On Site Shipper, Mastercard and Visa

www.thecollectorsfair.com

GPS location: Rundlett Hill Road, Manchester, NH

Make a Connection!

Now in our fourth year, this show offers a wide range of Antiques, Americana and Art for collectors at every level, with dealers who save their most exciting acquisitions for August. Whether you are the most sophisticated collector or just beginning, you will find many things to tempt you, so plan to spend several hours with us. Join in interesting conversation with the dealers and collectors from across the county who make the pilgrimage to New Hampshire for Antiques Week. It is an experience you will thoroughly enjoy and all of us look forward to welcoming you.

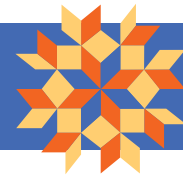


Presented by:

DISAIA MANAGEMENT
www.disaiamanagement.com
 860-908-0076

kdisaiamanagement@snet.net
 PO Box 471, Old Lyme, CT 06371

Antiques In Manchester



PART ONE

This section was designed and published by The Bee Publishing Company, 5 Church Hill Road, Newtown, CT 06470; 203-426-8036



PETER H. EATON ANTIQUES, INC., Newbury, Mass. — A very fine William & Mary gate leg table in maple with old red stain, deeply-ovaed scrubbed top and boldly turned legs. It retains two original hinges and two old replacements and has minor repair to the edge of the top at one end and some scuffing to feet repaired. The top measures 42 by 53½ inches, 27 inched high, and it is probably from New Hampshire, circa 1730. The table has great presence and has been in the same collection for nearly 25 years.



VILLAGE BRAIDER, Plymouth, Mass. — Cast iron lamb, inscribed on bottom "Chief Bender Lebanon PA Year 1879."



CHARLES WILSON ANTIQUES & FOLK ART, West Chester, Penn. — A Pennsylvania Conestoga wagon box in old blue paint, wood and iron, held by square nails and iron straps. The hardware is hand forged and the decoration is in the form of a tulip. It dates from the early 1800s and measures 17 by 18 by 9 inches.

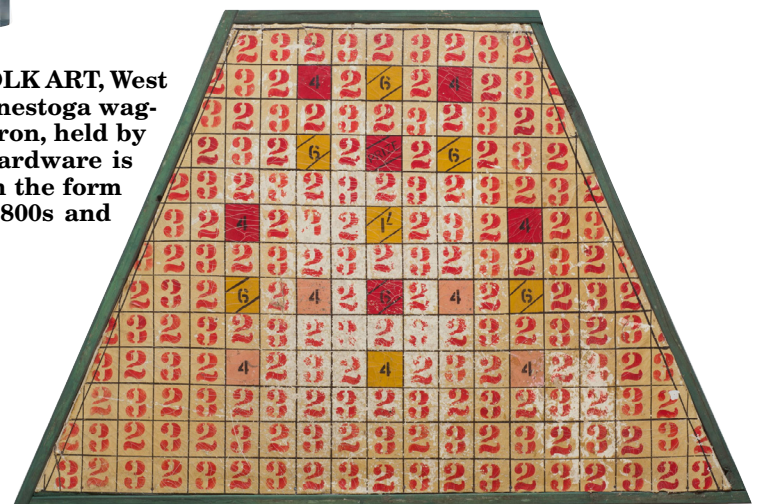


COLETTE DONOVAN, Merrimacport, Mass. — Pair of hand carved doves in the original dove grey, American, Nineteenth Century.



Wednesday, August 5
Thursday, August 6

DANIEL & KAREN OLSON, Newburgh, N.Y. — American hat box with beige swags and pillars on a blue background. It dates from the early Nineteenth Century and is in excellent condition.



GARVEY RITA ART & ANTIQUES, West Hartford, Conn. — Penny pitch game, Maine, oil on canvas mounted on wood and measuring 35 by 50 by 2 inches.

MARK & MARJORIE ALLEN

Furniture & Accessories of the 17th, 18th, and early 19th centuries.



32 Artisan Ct., Gilford, NH 03249
(603) 644-8989
www.antiquedelft.com

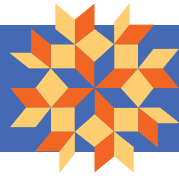
GRONNING AMERICAN ANTIQUES

Norman & Mary Gronning - 802-375-6376
normangronning@earthlink.net
www.gronningantiques.com



CHIPPENDALE CARVED CHERRYWOOD HIGH CHEST, NEW YORK OR NEW JERSEY, CIRCA 1770

PART ONE



Antiques In Manchester

Antiques In Manchester

**Show Moves To New Location For Its Fourth Year —
Opening Wednesday, August 5, With 53 Dealers**

MANCHESTER, N.H. — Antiques week in New Hampshire is one of the most anticipated events of the year for collectors and lovers of Americana. Starting with the Willis Henry Auction on August 1 and 2 and moving on through the openings at Deerfield and Midweek on the 4th, Antiques in Manchester on the 5th, and the opening of the New Hampshire Dealers show on the 6th, there is so much to see and enjoy and to learn about. It is a week of history, humanity, art, experience and an opportunity to learn so much. Each event has its own character and dealers with great material. Collectors line up hungrily at each opening and charge through the doors with amazing enthusiasm. There is a level of energy during this week that doesn't seem to repeat itself anywhere else during the year.

Perhaps it is the slower more relaxed pace of New Hampshire that give us the opportunity to reconnect with old friends and make new ones. We find ourselves running into other avid collectors from all over the country no matter where we go! There is a wonderful social experience here even among those who are vying for the same things. Collecting connects us all to our collective past, our present and on to our futures. We are excited by the evidence of simple and complex moments in our histories as we discover objects that have been lovingly preserved.

New Hampshire, more than any other



Taking time to look seriously at something wonderful!

week in the year, is about Americana and our need to connect to times when things were lovingly created and then handed through the years to be enjoyed. This week feeds our thrill of the hunt, our pleasure in the acquisition of something that pleases us, and our need for collegial camaraderie.

Antiques in Manchester is moving to Sullivan Arena on the stunning campus of St Anselm College. This move has allowed us to expand our dealer roster to 53. We welcome back the dealers who have done the show since the beginning, as well as our new exhibitors who maintain the same caliber of professional experience.

Our new dealers include Charles and Phyllis Wilson, Jane F. Wargo, Dennis Raleigh, Mad River Antiques, Emele's Antiques, James and Nancy Glazer, Diana H. Bittel, Wayne and Phyllis Hilt and David A. Zabriskie. These dealers bring a wide range of material, including wonderful folk art, pewter and ceramics, furniture, nautical arts and paintings.

Now in our fourth year, this show offers a wide range of antiques, Americana and art for collectors at every level, with dealers who save their most exciting acquisitions for August. Collectors, both avid and beginning, come from all over to join in the experience of being with like-minded individuals who enjoy the hunt and the conversations and connections they experience.

Whether you are the most sophisticated collector or just beginning, you will find many things to tempt you, so plan to spend several hours with us. Join in interesting conversation with the dealers and collectors from across the country that make the pilgrimage to New Hampshire for Antiques Week. It is an experience you will thoroughly enjoy.

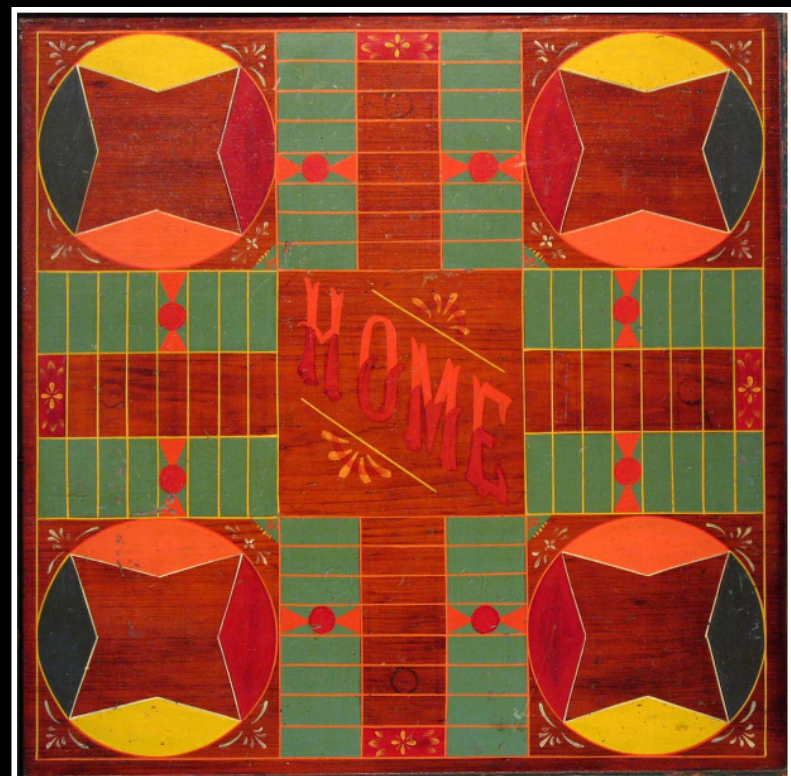
We look forward to greeting you on Wednesday and Thursday, August 5 and 6. Watch our Facebook page (Antiques in Manchester) for information and previews of objects that will be in the show. For a dealer list, directions and other information, see our webpage www.antiquesinmanchester.com.

ROBERT SNYDER - JUDY WILSON

AMERICANA - FOLK ART

SIX-COLOR PARCHEESI GAME BOARD IN MUSTARD, DARK GREEN, SALMON, DARK RED, BLACK AND EMBELLISHMENTS OF WHITE, CENTERED BY A COACH PAINTED HOME. DOUBLE-SIDED, WITH THE REVERSE BEING THE GAME OF CHECKERS. ORIGINAL SURFACE, NO WARPS OR CRACKS. APPLIED MOLDING. SIZE: 19½" X 19½".

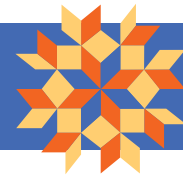
EXHIBITING:
ANTIQUES IN MANCHESTER
AUGUST 5 & 6
SULLIVAN ARENA
ST ANSELM COLLEGE
MANCHESTER, NH



72 MAIN STREET • P.O. BOX 407 • WISCASSET, ME 04578
(207) 882-4255

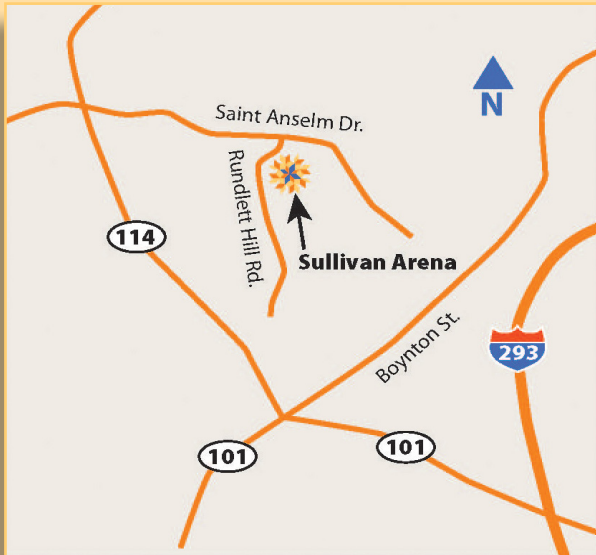
EMAIL - SNYDERWILSON@MYFAIRPOINT.NET • WEB - WWW.SNYDERWILSONANTIQUES.COM

Antiques In Manchester



PART ONE

Directions To Antiques In Manchester



GPS Address: Rundlett Hill Rd Manchester – Watch for signs on Campus
From the Radisson: Start south on Elm Street; Take second right onto Granite Street, go .6 miles and turn left onto Main Street, .3 miles and turn right onto Varney Street NH 114A. Go 1.2 miles and turn left on to College Avenue, which becomes Saint Anselms Drive. Turn left onto Rundlett Hill Road
From Points Southeast: I-93 North to I-293 North. Exit left to Route 101 West (Bedford/Goffstown) to junction of Routes 101 and 114 (set of lights). Take Route 114 North. Continue through set of lights to Saint Anselm Drive. Turn right on Saint Anselm Drive and turn right on Rundlett Hill Road.
From Seacoast: Route 101 West to junction of Routes 101 and 114 (set of lights). Take Route 114 North. Continue through set of lights (mini-golf on right) to Saint Anselm Drive. Turn right on Saint Anselm Drive (Campus is approx. 1 mile on right.) to Rundlett Hill Road. Turn right on Rundlett Hill Road.
From Points West: Route 101 East to junction of Routes 101 and 114 (set of lights). Take Route 114 North. Continue through set of lights to Saint Anselm Drive. Turn right on Saint Anselm Drive and then right on Rundlett Hill Road.
From Points Southwest: Take Route 3 North. Continue North on Everett Turnpike (through toll plaza) to Route 101 West to junction of Routes 101 and 114 (set of lights). Take Route 114 North. Continue through set of lights to Saint Anselm Drive. Turn right on Saint Anselm Drive and then right on Rundlett Hill Road.
From Points North: I-93 South to I-293 South (Everett Turnpike) to Route 101 West (Exit 10) to junction of Routes 101 and 114 (set of lights). Take Route 114 North. Continue through set of lights to Saint Anselm Drive. Turn right on Saint Anselm Drive and right on Rundlett Hill Road.



LANGENBACH'S FINE ART & ANTIQUES, Kingston, Mass. — Rare painted cast iron frog hotel bell by R.H. Rich, Easthampton, Conn.



ROBERT SNYDER / JUDY WILSON, Wiscasset, Maine — Pair of brass lighthouse andirons with great patina, 16½ inches tall.



DAVID ZABRISKIE, Lake Placid, N.Y. — Folk art cat embroidery



Don Olson Fine American Antiques

Rochester, NY 585-385-9002 • earlypieces@aol.com • www.donolsonantiques.com



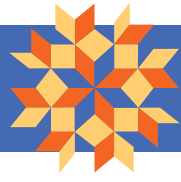
Early Diminutive Decorated Boxes

Early to mid-19th century. A sampling of colorful boxes. Small enough to fit on any stand, chest, mantle, or shelf, yet boldly colored inviting handling and conversation. The interplay between forms and colors and history enables boxes to stand-out within collections, and makes their pursuit an exciting part of collecting.

donolsonantiques.com

Full details on my website: www.donolsonantiques.com

PART ONE



Antiques In Manchester

JOAN R. BROWNSTEIN • AMERICAN FOLK PAINTINGS

PETER H. EATON, INC • AMERICAN FURNITURE



The Red Lady

This mystery woman, her name and her painter are unknown to us, is surrounded by the color red - the voluminous, billowing drape, the red Federal sofa, her shawl, her red lips, even the column is lightly tinted with red.

In folk portraiture the profile portrait is usually reserved for small portraits on paper. It is unusual in a full-sized portrait. Her portrait shines, a wonderful glowing, ethereal image of a beautiful young woman.

25 x 30 inches and in a period gilded frame. Probably New England circa 1825.

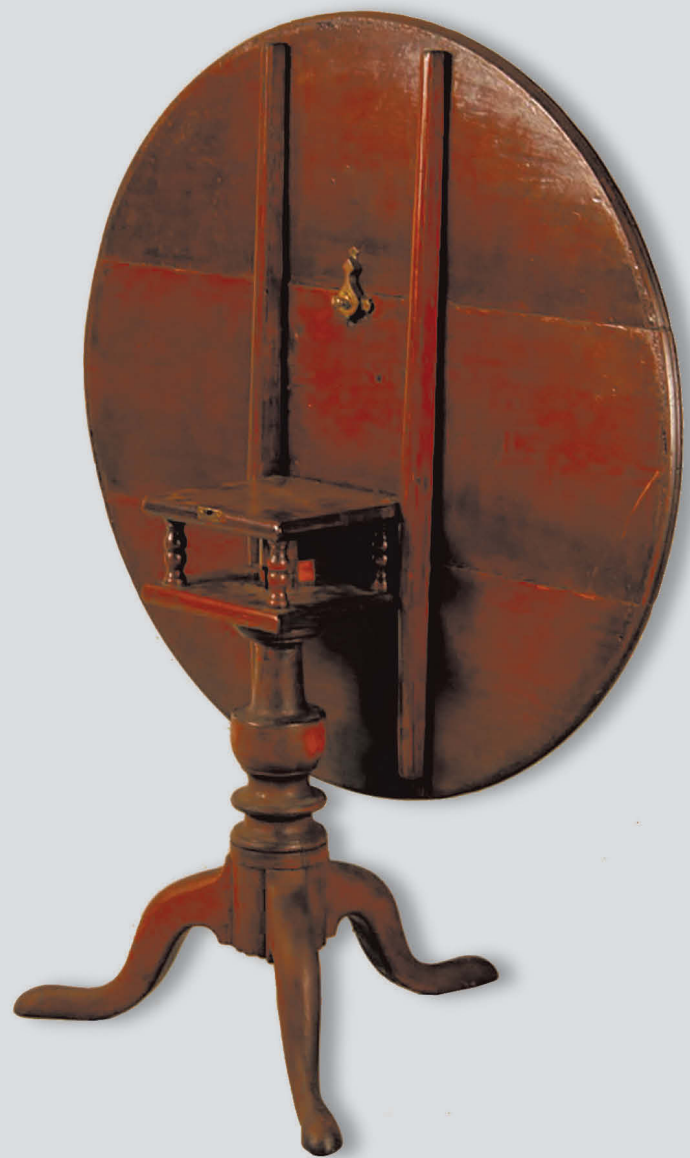
A FINE COUNTRY QUEEN ANNE TEA OR BREAKFAST TABLE WITH DISHED TOP, HAVING A MOLDED LOWER EDGE AND DOVETAILED CLEATS, A BIRDCAGE WITH TURNED COLUMNS ABOVE A GUTSY URN-SHAPED SHAFT WITH CABRIOLE LEGS. CHERRY THROUGHOUT, IN A CRACKLED OLD SHELLAC FINISH. A CLASSIC CT RIVER VALLEY FORM, c.1770-85. TOP 36 3/4" x 37 1/2", HT. 27 1/2".



JOAN R. BROWNSTEIN

(978) 465-1089 WWW.AMERICANFOLKPAINTINGS.COM

JOAN@AMERICANFOLKPAINTINGS.COM

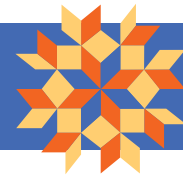


PETER H. EATON

(978) 465-2754 WWW.PETEREATON.COM

PETER@PETEREATON.COM

Antiques In Manchester



PART ONE



Where old friends meet and new friends are made.

VILLAGE BRAIDER, Plymouth, Mass. — Cast iron eagle, North Shore, Massachusetts origin, 19 inches tall and from the Nineteenth Century.



LANGENBACH'S FINE ART & ANTIQUES, Kingston, Mass. — Early wooden lantern.



PETER H. EATON ANTIQUES, INC, Newbury, Mass. — The finest “make-do” chair that I have ever owned. Originally a Seventeenth Century caned-back armchair with a carved crest and great turnings, then the seat covered with “Russia” leather in the Eighteenth Century, the front edge of the seat and wing chair conversion, also in the Eighteenth Century, then the rockers, probably in the early Nineteenth Century. Great old green/gray paint on the base — and note the size of the original front stretcher. “Going green” 250 years ago! 45 inches high.

Wednesday, August 5 11 am - 7 pm
Thursday, August 6 12 pm - 6 pm

Langenbach's Fine Art and Antiques



Gaff-rigged topsail schooner racing yacht attributed to **Joseph B. Smith**, c. 1870, 22" x 30"



Antiques In Manchester

164 Elm Street, Kingston, MA 02364
 781-585-6123 (Day) 781-585-6529 (Evening)
 E-mail: langenbach@verizon.net



DIANA H. BITTEL ANTIQUES

610-525-1160 ~ 610-715-1595 (c)
 510 FISHERS ROAD, BRYN MAWR, PA. 19010
 DHBANTIQU@AOL.COM
 WWW.DIANABITTELANTIQUES.COM



Desirable small Pennsylvania cherry linen press with dated inlay 1812, pinwheel design above, alternating light and dark inlay, corner inlaid fans, arched doors, flared bracket feet, bold fluted quarter columns both top and base. 80" high. 38" case + 2 1/2" cornice 20 1/2" D.

PART ONE  Antiques In Manchester



JOAN R. BROWNSTEIN, Newbury, Mass. — Three portraits attributed to Richard Da Lee. A mother, father and their daughter, presented in profile within painted spandrels, beautifully and sensitively drawn. It descended in the artist's family, upstate New York, circa 1845-50.



PAUL & KAREN WENDHISER, Ellington, Conn. — Matched pair of early Nineteenth Century wall sconces with crimped tops and bases, clenched candle sockets and in old surface. The pair is American and measures 9¾ by 3½ inches.

JAMES & NANCY GLAZER, Bailey Island, Maine — Early figure of a doctor, circa 1910.



A choice Queen Anne R.I. 7-drawer bureau in early red wash. Excellent condition, minor rear foot repair. Knobs, escutcheons and red wash most likely applied in 1810 as dated on backboard in old red. No other evidence of earlier brasses. Ca 1770; all roseheads, maple with chestnut and yellow pine secondary woods. Rare size: 35" wide, 15" deep, and 59" tall.



Derik Pulito

18th & 19th Century Country Americana
KENSINGTON, CT (860) 828-0588
By Appointment Only

SAMUEL HERRUP ANTIQUES

116 Main Street, P.O. Box 248
Sheffield, MA 01257
(413)229-0424 c: (413)822-1471
E-mail: herrup@verizon.net
Web: www.samuelherrup.com



DOLL'S BED

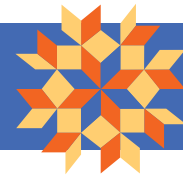
English mahogany doll's bed, mid 19th Century, with original chintz bed hangings and covers. Ht. 29 3/8"; L. 24"; D. 16 5/8".

DUTCH HANGING CUPBOARD

Rare Dutch hanging cupboard, walnut, 18th Century, with canted sides, original glass, hinges, with original green paint and gilt highlights. The shaped shelves are inscribed with the names of the four Continents, probably made specifically to show-off 18th Century porcelain or pottery groups of the Continents. Ht. 39 1/2"; W. 45 1/2"; D. 12 3/4".

See samuelherrup.com for detail photos.

Antiques In Manchester



PART ONE



DENNIS RALEIGH AMERICAN ANTIQUES & FOLK ART, Wiscasset, Maine — George M. Hathaway (1852-1903), American, Maine coast scene featuring the Portland Head Light. It is completely untouched and original, measuring 14 by 9½ overall.



GRONNING AMERICAN ANTIQUES, Shaftsbury, Vt. — An Eighteenth Century gate leg table made of maple with oak and white pine secondary woods, probably Boston.



PETER H. EATON ANTIQUES, INC., Newbury, Mass. — A boldly-proportioned Chippendale wing chair with fully serpentine crest and wings and chamfered legs. It is in mahogany with whitewood, pine and ash secondary woods and is from New Hampshire or perhaps Vermont origin, circa 1770-85. It measures 42½ inches high, 34 inches wide at wing tips, and 14-inch seat height. Note construction of wings: vertical and horizontal pieces are overlapped by 6 inches to significantly strengthen what is always the weakest part of these chairs. This is the first time I have seen this type of practical construction.



SAMUEL W. FORSYTHE ANTIQUES, Columbus, Ohio — Rare early tin whale oil light.



STEVEN S. POWERS, Brooklyn, N.Y. — Indian with elaborate headdress, carved wooden pipe, circa 1898, 6½ inches high, 3½ inches deep and 2⅛ inches wide.



MARK & MARJORIE ALLEN, Gilford, N.H. — A very scarce early Eighteenth Century London Delft blue dash portrait charger depicting George II holding his orb and scepter and standing between sponged trees. It has great color.

Dennis Raleigh
American Antiques & Folk Art
 Wiscasset, Maine

Large Eagle Weathervane on Ball
 Attributed to A. L. Jewell Co., Waltham, Mass c1860-1868
 Formed sheet copper and cast zinc composition.
 Condition: Excellent Surface: Weathered gold leaf
 Size: 25 inches L, 21 inches T, 2-5 inch wing span
 Includes a custom metal stand

dennisraleighantiques.com
 dgraleigh@myfairpoint.net • Cell 734-604-0898

Sheridan Loyd
 american antiques

Fine child's high chair
 Pennsylvania, Ca. 1770

Exhibiting at Antiques In Manchester
www.sheridanloyd.com

PART ONE  Antiques In Manchester



DIANA H. BITTEL, Bryn Mawr, Penn. — A New Hampshire tiger maple slant front desk with three fan carved insets on interior drawers with center pinwheel. There is a bold carved double fan design on center drop and beautiful tiger maple graining. It dates circa 1780 and measures 37 inches wide, 23 inches deep and 44 inches high.



MARK & MARJORIE ALLEN, Gilford, N.H. — A mid-Eighteenth Century round top splayed leg New Hampshire tavern table. The top and sides are pine and the legs and stretcher are birch.



DENNIS RALEIGH AMERICAN ANTIQUES & FOLK ART, Wiscasset, Maine — Large painted zinc butcher shop trade sign dating circa 1900 and in excellent condition and surface.

Jane F. Wargo



Early 20th c. Handmade "Hobo" Marionette, from an Ohio Collection. Stands 26" tall.

Wallingford, CT

(203) 265-0342

jwfwargo@comcast.net

Engraved "SPLENDID" with Daisy and Leaf. The Daisy & Engraved boarder on this decanter are identical to that of the famous Greyhound vase that recently sold at public auction. (Ref. pg. 133 plate 32, Artistry and Innovation in Pittsburgh Glass. Frick Art and Historical Center)

This factory was one of the leaders in its early engraved & cut examples. Early engraved Bakewell examples can be found in some of the most coveted collections of the social elite within Pittsburgh today.

This 19th century decanter displays how "Splendid" their artistry in engraving was and serves as a symbol today on how splendid the City of Pittsburgh is. In the Pittsburgh Mercury of 1832 referred to President Jackson set of glass for his own use as splendid. The order included bowls, decanters, vases etc... All said to be executed of the very best style of workmanship. It's noted in the column the glass is as splendid as crystal. In another column in the Pittsburgh Mercury

November 10, 1818 under the caption President's glass it talks about the "splendid equipage of glass" intended for Mr. Monroe's sideboard and it consisted of a full set of decanters among other specimens of glass.

It is our theory the use of the term splendid was a way to refer to the Pittsburgh pride in their cutting and engraving as well as the clarity of the glass delivered from the factory. In conclusion, with the engraving identical to that in today's museums & historical references and the use of Bakewell glass being referred to as splendid we feel this example has a strong attribution to Bakewell.

Condition is excellent with some roughness from use to the top of the neck of the decanter. Ht 8-1/2 without stopper.



RGL Antiques

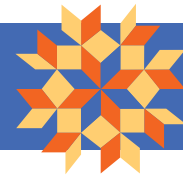
Ralph & Gretchen Franzese

Pittstown, NJ 08867

By Appointment only • 908-930-5615

rglantiques@gmail.com • www.rglantiques.com

Antiques In Manchester



PART ONE



GREG K. KRAMER & Co., Robesonia, Penn. — Child's paint-decorated settee, Pennsylvania.



JANE F. WARGO, Wallingford, Conn. — Amusing late Nineteenth or early Twentieth Century pen wiper depicting a little sitting bear playing the bass fiddle.



SAMUEL HERRUP ANTIQUES, Sheffield, Mass. — Dutch Delft plaques with polychrome decoration, Eighteenth Century, 7 3/4 inches and 8 3/4 inches.



GARVEY RITA ART & ANTIQUES, West Hartford, Conn. — Sandpaper drawing with African American, circa 1886, measuring 18 by 23 inches. It is accompanied by its original print source.

thecollectorsfair.com



LANA SMITH Louisville, Ky. — Silk shag cut mat with crochet back, 20 by 29 inches and in vibrant color.



DERIK PULITO, Kensington, Conn. — Rare cherry five-drawer Connecticut bureau with tall scalloped apron, replaced old brasses and very old re-finish. Pine is the secondary wood, it is in excellent condition and is 35 inches wide, 17 inches deep, 55 inches tall.

★ ★ CHARLES WILSON ★ ★ ANTIQUES & FOLK ART



CAST IRON ACORN BIRD HOUSE WITH A LEAF CAST ON TOP. IN CRUSTY OLD PAINT. EXCELLENT CONDITION. PATN. APRIL 14 1888 MILLER IRON CO. PROV. RI. 7 1/2" X 5 1/2."



A LARGE IMPOSING OXEN COPPER WEATHERVANE ATTRIBUTED TO L.W. CUSHING & SON, WALTHAM, MA. C.1870. IN THE BEST OLD SURFACE OF LAYERS OF SIZING, PAINT & GILT. HISTORY AVAILABLE. 38" X 25" X 7".

A WOOD CARVED LODGE CHANDELIER MEDALLION, ATTRIBUTED TO A BALTIMORE, MD. LODGE. PAINTED WOOD WITH DOUBLE SAW TOOTH BORDER AND 4 LODGE ICONS. IT HAS AN APPLIED FINIAL THAT PROTRUDES 12" TO HANG A LAMP. SIMULATES THE GREAT PLASTER CEILING DECORATIONS. ALL ORIGINAL WITH NO RESTORATION. A UNIQUE PIECE OF AMERICAN LODGE FOLK ART. 40" ROUND X 12". C.1880.



A PAIR OF WOOD CARVED BIRDS MOUNTED ON RED PAINTED HEARTS. ATTRIBUTED TO THE BEDFORD, PA. AREA. C. 1920-30. A SIMILAR PAIR IS ILLUSTRATED IN THE BOOK: JUST FOR NICE. ITEM# 246. IN ORIGINAL VERY NICE UNTOUCHED CONDITION. 6" X 5" X 3".

West Chester, Pa. 19380 (610) 431-2025

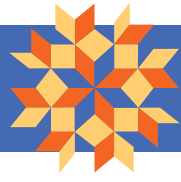
EMAIL: orvette@comcast.net

Charles J. Wilson • Phyllis R. Wilson

VISIT OUR WEB SITE: www.wilsonfolkart.com

Call ahead for Gallery visit

PART ONE



Antiques In Manchester



DANIEL & KAREN OLSON, Newburgh, N.Y. — Three decorated Nineteenth Century stoneware crocks, two hens and one rooster, all pecking corn.



CHARLES WILSON ANTIQUES & FOLK ART, West Chester, Penn. — A fine carved wood dentist trade sign in the form of a tooth, carved in the round with several layers of old paint. It retains the original hanger, measures 16 inches tall and dates circa 1860.



MARK & MARJORIE ALLEN, Gilford, N.H. — A fine, tall pair of mid-Eighteenth Century English brass scalloped even petal based candlesticks.

Greg K. Kramer & Co.

Americana, Folk Art, Period and Painted Furniture



EXCEPTIONAL FOLK ART BIRD TREE W/18 POLYCHROME PAINTED CARVED WOOD BIRDS & SQUIRREL BELOW

CIRCA 1890-1910
ORIGIN: MAINE
OUTSTANDING HEIGHT OF 65 1/2"



27 W. Freeman Street
Robesonia, PA 19551

By Appointment Only 610-693-3223

WWW.GREGKRAMERANDCO.COM

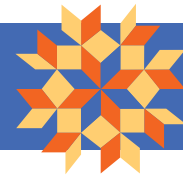


Wayne & Phyllis Hilt

American & British Pewter

176 Injun Hollow Road, Haddam Neck, CT 06424
(860) 267-2146 www.hiltpewter.com

Antiques In Manchester



PART ONE

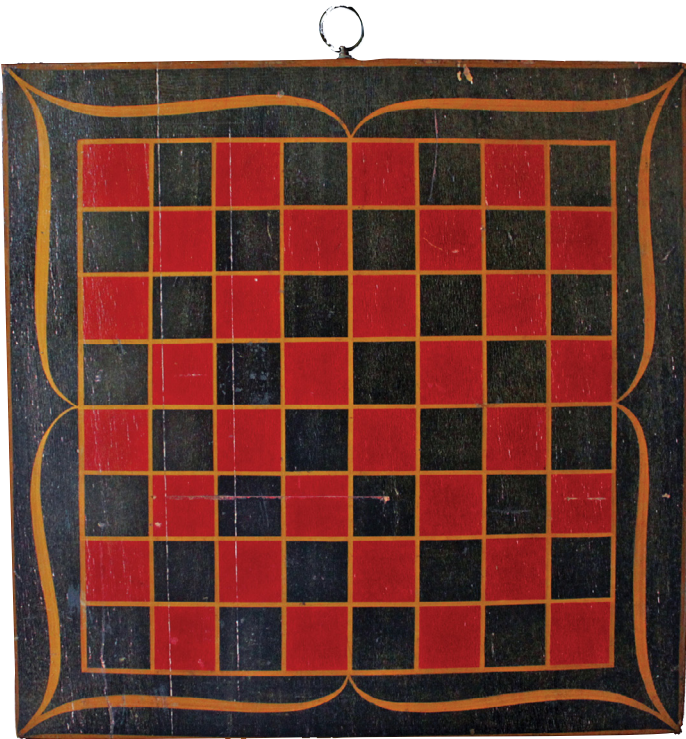
NOTE
TURN
TO PAGE
AM-13 FOR
ANTIQUES IN
MANCHESTER
PART TWO



GREG K. KRAMER & Co., Robesonia, Penn. — Folk art whirligig from Berks County, Penn.



COLETTE DONOVAN, Merrimacport, Mass. — American maple burl bowl dating from the Eighteenth Century.



MAD RIVER ANTIQUES, LLC, North Granby, Conn. — An uncommon stoneware cooler made to commemorate the 1893 Columbian Exposition.



DAVID ZABRISKIE, Lake Placid, N.Y. — "Lucky," much loved velvet elephant.

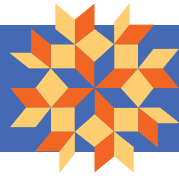
DON OLSON FINE AMERICAN ANTIQUES, Rochester, N.Y. — One of several Nineteenth Century colorful gameboards, this elegant example rendered by a "coach painter," so-called as they were known for creating exceptional painted pieces ranging from trade signs, gameboards, coaches and wagons, and sometimes even portraits.

2000 Frankfort Avenue, Louisville, Kentucky
(502) 899-1699 Open 10 to 5 (Mon. - Sat.)
email: crsmith2002@aol.com

Mid-19th century folk art oil painting on canvas
Zouaves with West Point Arsenal in background

David A. Zabriskie
Lake Placid, New York
dazny@yahoo.com • 518-524-9967

PART TWO

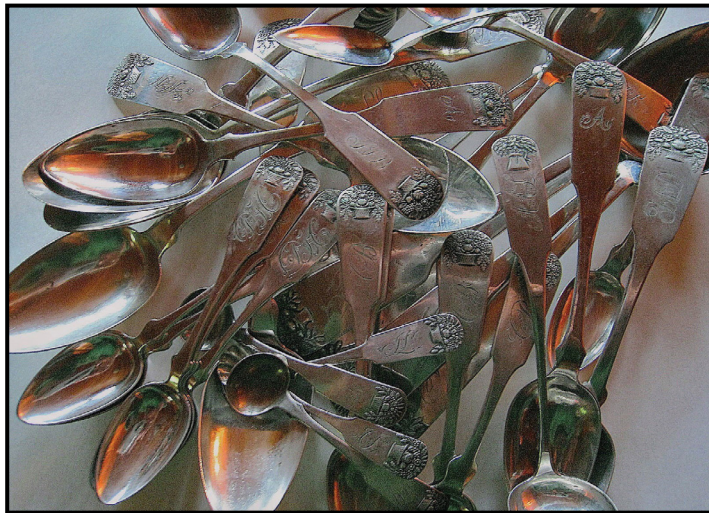


Antiques In Manchester

STEPHEN & CAROL HUBER, Old Saybrook, Conn. — The pastoral romance novel *Galatea* is the subject of this anonymous needlework picture worked at the Folwell School. As the heroine of the novel by Miguel de Cervantes Saavedra (1547–1616), also the author of *Don Quixote*, she has captured the hearts of all the shepherds. The book, written in 1585, was translated from Spanish into French by M. Le Chavalier de Florian and later into English, and became a very popular novel with young ladies studying literature in the early Nineteenth Century. The scene in this needlework depicts Elico, who is madly in love with Galatea, offering food to one of her sheep while she tries to intervene. The print, by Charles Knight, London, 1788, on which this composition is based bears the quote, “Why punish your Sheep, when it is me you wish to chastise?” The piece is silk and watercolor on linen measuring 23 by 29½ inches framed, circa 1810, Philadelphia.



NOTE
PART TWO
ANTIQUES IN
MANCHESTER
CONTINUED
FROM PAGE
AM-12



DAVID ZABRISKIE, Lake Placid, N.Y. — Grouping of coin silver decorated flatware.

JANE F. WARGO, Wallingford, Conn. — A pair of Nineteenth Century cast iron hose guides, pineapple with wreath motif, measuring 17 inches long.

GRONNING AMERICAN ANTIQUES, Shaftsbury, Vt. — William and Mary maple roundabout armchair of New England origin, circa 1740.



SAMUEL W. FORSYTHE ANTIQUES

Columbus, Ohio 43214 • Tel/Fax 614-261-7489

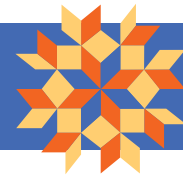


Painting by Zedekiah Belknap, 1781-1858: Portrait of an attractive young lady on wooden panel by Zedekiah Belknap, circa 1820, Size: 23"x28"

Peter Derr's Punched Tin Teapot: The punched tin teapot was made by Peter Derr, (1793-1868) and is dated 1848. The punched tin tulip decoration is by Jacob Schade, married to Peter's eldest sister, Ana Maria Derr. This teapot is illustrated in "The House of Derr" by James F. Spears, page 142 and is described on page 141.



Antiques In Manchester



PART TWO



PETER H. EATON ANTIQUES, INC, Newbury, Mass. — An incredibly rare survivor! Superb twist-turned legs and stretchers. Walnut, oak and pine in great original surface and retaining the original tacking, leather (one old patch), and stuffing. Probably Swedish, circa 1650-90, measuring 43½ inches high, 19 inches seat.



DON OLSON FINE AMERICAN ANTIQUES, Rochester, N.Y. — Northeastern American home-spun pot holder “We’s Free” celebrating the 13th Amendment. This important historical “document” ironically in the form of a utilitarian homespun potholder was likely crafted by a freed slave soon after President Lincoln signed a joint resolution submitting the 13th Amendment to the states in 1865. The imagery of the jubilant dancing couples symbolizes slaves coming together rather than being torn apart and sold.



JANE F. WARGO, Wallingford, Conn. — A very nice Nineteenth Century berry basket in green paint with tin rims, 5 inches high, shown with a small wooden measure filled with six early strawberry needle sharpener.



STEVEN S. POWERS, Brooklyn, N.Y. — New England bat house or dove-cote, circa 1880, 16¾ inches high, 12½ inches wide and 4¾ inches deep.



DOVER HOUSE ANTIQUES, Louisville, Ky. — Carved wood optician's trade sign, gold gilt frames with polychrome eyes. It was found in New Hampshire and dates from the early Twentieth Century.

Wednesday, August 5
Thursday, August 6

Salt Box Antiques

Sugarloaf, PA tel 570-788-1716



Congratulations Karen on moving the show to the Sullivan Arena on the picturesque grounds of St. Anselm College. I know you and all your dealers will have a fantastic show. Thanks for everyone's support and I hope to join you next year.

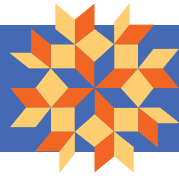
Good luck, Paul Scott



SFAntiques

Po Box 835, Hillsboro, NH 03244
603-464-3617

PART TWO



Antiques In Manchester



LANGENBACH'S FINE ART & ANTIQUES, Kingston, Mass. — Unusual Windsor side chair measuring 47 inches tall.



VILLAGE BRAIDER, Plymouth, Mass. — Cast iron hand holding a bottle, late Nineteenth or early Twentieth Century.



SAMUEL HERRUP ANTIQUES, Sheffield, Mass. — Rare pair of brass tie backs or picture holders with impressed image of Benjamin Franklin, English, made for the American market. They date circa 1790 and measure 1½ inches in diameter.

STEVEN S. POWERS

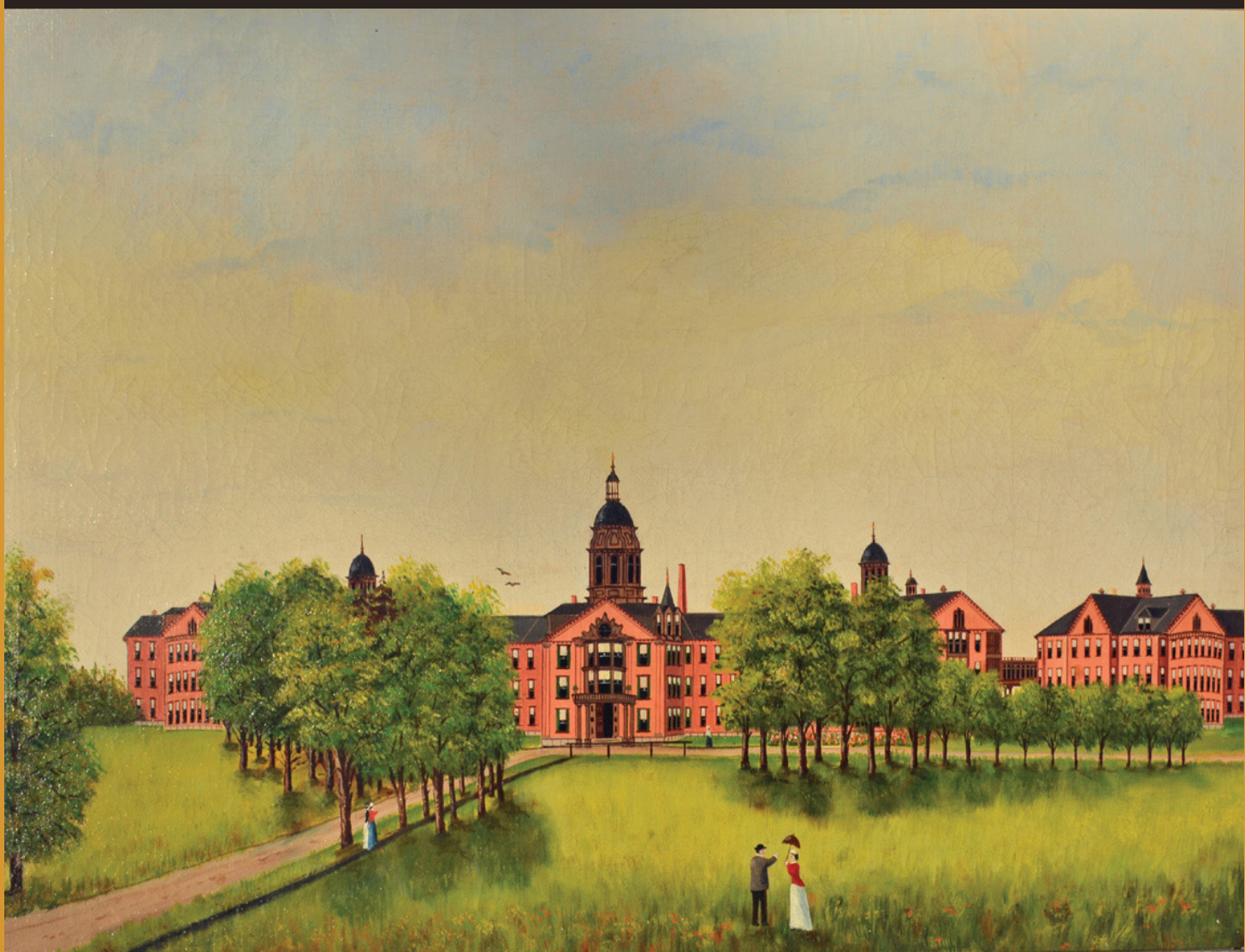
360 COURT STREET #28, BROOKLYN, NY 11231 | 718.625.1715 OR 917.518.0809 | STEVENPOWERS.COM | MEMBER: ADA



Joshua Shaw (1776-1860) | Oil on canvas | Circa 1825 | 16" x 20" (sight)

Village Braider Inc.

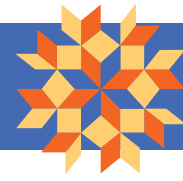
48 Sandwich Street, Plymouth, Mass. 02360, 508-746-9625



Oil painting on canvas of an Asylum 19th. c.

First opened 1-12-1833 the "Worcester Lunatic Asylum" or the "Bloomingdale Asylum" was based on "Kirkbridge Principale". Freud visited in 1909 on his only visit to the US.

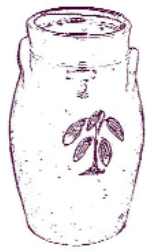
Antiques In Manchester



PART TWO



An early 19th C. stoneware jug with an incised floral decoration, attributed to New York City



Mad River Antiques, LLC

Steve & Lorraine German
North Granby, CT 06060

Phone: (860)-653-5733
Email: madriverrantiques@aol.com
Web: www.madriverrantiques.com



A vibrantly decorated stoneware jar made at the pottery of O. L. and A. K. Ballard between 1859 and 1868



PAUL & KAREN WENDHISER, Ellington, Conn. — Abstract cutout convex link bracelet, marked Hecho en Mexico, #30, SC, eagle 3, sterling and about 6½ inches. It dates circa 1945.

DIANA H. BITTEL, Bryn Mawr, Penn. — A New Hampshire oil of a child with dog by U.D. Tenney (1826–1905), measuring 35 by 30 inches.



SAMUEL HERRUP ANTIQUES, Sheffield, Mass. — Sailboat picture, oil on canvas with silk and thread, by Thomas Willis. It is signed lower right, dates circa 1900, and measures 22 by 26 inches.

John & Leland Marshall Antiques



Two draw work stand, highly figured maple, great color, New England origin, first quarter 19th c.

johnhuntmarshall3@gmail.com 413-519-1715/413-320-1317
28 North Maple Street, Florence, MA. 01062



QUEEN ANNE MAHOGANY MIRROR
RETAINING ITS ORIGINAL LABEL FOR JOHN ELLIOTT.

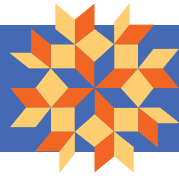
PHILADELPHIA, CIRCA 1765-75, 33" TALL,
UNTOUCHED BACK AND ORIGINAL GLASS.

JAMES L. PRICE ANTIQUES

P.O. Box 919, Carlisle, PA 17013 By appointment 717-448-9272



PART TWO



Antiques In Manchester



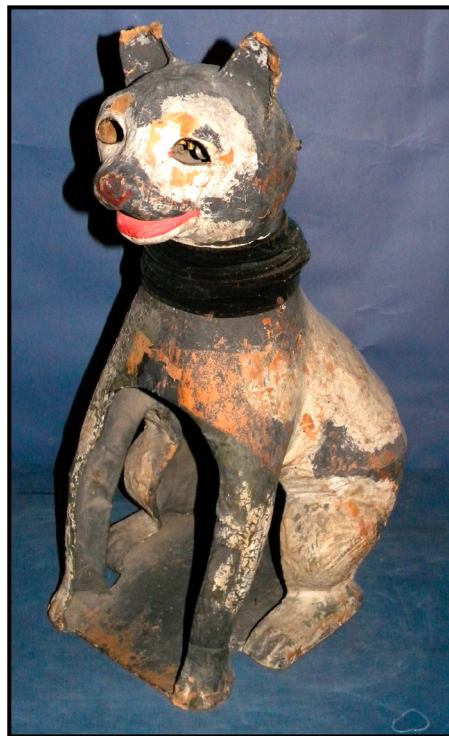
CHARLES WILSON ANTIQUES & FOLK ART, West Chester, Penn. — A carved wood Lady Liberty, carved in the round, 42 inches tall and very fine detail. It was never painted, mounted on a small wooden base, and dates circa 1890-1920.



DOVER HOUSE ANTIQUES, Louisville, Ky. — Folk art game wheel, polychrome with cast horses and jockeys. It retains the old label: Timonium Fair and dates from the early Twentieth Century.



SAMUEL W. FORSYTHE ANTIQUES, Columbus, Ohio — Mid-Nineteenth Century redware compote, Pennsylvania origin.



MAD RIVER ANTIQUES, LLC, North Granby, Conn. — A wonderful papier mache carnival cat dating from the early Twentieth Century.



STEPHEN & CAROL HUBER, Old Saybrook, Conn. — This large rare pictorial needlework, Shepherd and Shepherdess Courting Scene, features a shepherd and shepherdess in a bucolic setting with sheep near her and rams near him. The inclusion of a leaping stag, dogs, birds, whimsically stylized trees and sun greatly add to its charm and appeal. Likely from the Boston area, the dark brown filled in background, sun and some of the flowers are found in other Boston canvas-work pictures, and the design characteristics of this needlework and the poplar backboard is indicative of an American origin. It is wool on linen canvas and measures 15¼ by 27¾ inches framed.



Ralph & Karen DiSaia
ORIENTAL RUGS

Connecticut's Trusted Resource
for Distinctive Antique Carpets



Oriental Rugs Ltd.

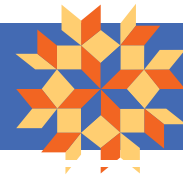
23 Lyme Street, Old Lyme, CT 06371
orientalrugs@snet.net • 860-908-0076

open by appointment



www.orientalrugsLtd.com

Antiques In Manchester



PART TWO

CHUCK WHITE ANTIQUES



A wonderful two-sided game board with a five color parcheesi on one side and a most rare "snake and ladders" game on the other. 16-1/2" square.

A fine Hudson Valley single door cupboard. In excellent condition retaining its original tomato red paint and original hardware. A most outstanding size of only 28 inches wide and 45 inches high. Truly a rare find!!

**88 Kings Highway,
Warwick, New York
724-699-1663**



GARVEY RITA ART & ANTIQUES, West Hartford, Conn. — American hooked rug measuring 49 by 39 inches. It is ex collection Kristina Barbara Johnson.



STEPHEN & CAROL HUBER, Old Saybrook, Conn. — The sampler is inscribed: Nancy Atwater (10 picked out) Years of age September 17th 1798. Nancy was one of ten children that grew up in Cheshire, Conn., and lived in a house that had descended in her father's family for seven generations. The family house was a center chimney colonial and is probably depicted on the sampler. The 12 people on the bottom of the sampler are not yet identified but are likely related to the sampler maker. Her father Samuel Atwater was a drummer in the Revolutionary War and married Patience Peck. Nancy was born September 13, 1789, married Ebenezer Doolittle and they had five children. Silk on linen, 16 by 13 inches sight.



JOAN R. BROWNSTEIN, Newbury, Mass. — A sixth plate daguerreotype portrait of a child who holds what looks like a portrait miniature out in front of her like an offering or gift for the viewer, giving emotional meaning to the portrait image. It is from New England, circa 1848, and is archivally sealed and conservation framed.



DANIEL & KAREN OLSON, Newburgh, N.Y. — Profusely decorated large early Nineteenth Century tin document box in excellent condition.



ROBERT SNYDER / JUDY WILSON, Wiscasset, Maine — Gorgeous Grenfell mat of four mallards in flight over marsh grasses. It has been professionally cleaned and mounted and measures 53 by 39 inches.

Summer Sampler Sale & Open House



- Huge Selection of Historic Needlework
- New This Year - Special Bargain Bins (incredible savings)
- Complementary verbal appraisals

*Please join us for this special event
August 8 & 9, 10 a.m. - 5 p.m.*

STEPHEN & CAROL HUBER 

America's Preeminent Source for Girlhood Embroideries

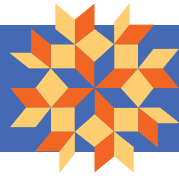
Directions to the gallery: From the South: Take I-95 N to Exit 67, right, left at light, 1/4 miles on right. From the North: Take I-95 S to Exit 68, under I-95, left, 1/2 mile on right. Mooring available adjacent to property.

FORTY FERRY ROAD • OLD SAYBROOK, CONNECTICUT 06475

TEL 860.388.6809 • Hubers@AntiqueSamplers.com • www.AntiqueSamplers.com



PART TWO



Antiques In Manchester



DON OLSON FINE AMERICAN ANTIQUES, Rochester, N.Y. — Beautiful portrait of the Hudson River paddle wheel steamship *Kaaterskill*, oil on canvas, dating from the late Nineteenth Century. The *Kaaterskill* carried vacationers up and down the Hudson River to the Catskills. This painting shows the steamship on a lovely autumn day with passengers pictured on the decks happily taking in nature and nearby sail boats. The appealing colors are highlighted by the blue and white flag of the Athens Steamboat Company on the left, and the rich colors of the American flag on the right.



MAD RIVER ANTIQUES, LLC, North Granby, Conn. — An early to mid-Twentieth Century rustic lift-top twig desk in light blue paint.

STEPHEN & CAROL HUBER, Old Saybrook, Conn. — This Order Of Free Gardeners Society mid-Nineteenth Century very large and graphic embroidered apron with various symbols and emblems has dramatic visual appeal while providing a cultural goldmine of interpretive discussions. For example, embroidered on the apron are the letters P, G, H, E, initials of Pison, Gihon, Hiddekel (Tigris) and Euphrates, the four rivers of the Garden of Eden, and A, N, S, O, initials of Adam, Noah, Solomon, all known to be master gardeners and "O" for olive. Other initials include A, G, S, Greek letters representing the words Excellence, Knowledge and Wisdom. Interspersed on the ground fabric are the initials W, B, S, which stand for Wisdom, Beauty and Strength. While Free Gardeners' traditions were similar to Free Masons, their ribbons, sashes and aprons have different shapes and decorative elements including depictions of working tools as in the gardening tools under Adam & Eve and the shovel in Adam's right hand. Free Gardeners aprons are full length, and are usually made of dark blue serge (wool) and are often colorfully embroidered. The size is 30 3/4 by 23 3/4 inches sight.



JAMES & NANCY GLAZER, Bailey Island, Maine — Cut work stamp bridge table, circa 1920.

Wednesday, August 5
Thursday, August 6



GARTHOEFFNER GALLERY

ESTABLISHED 1965

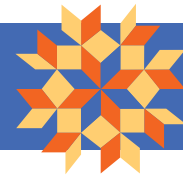
Antiques



Sailboat, Carved and Painted Wood, 24" L X 16" H, New England, C.1880

Pat and Rich Garthoeffner • Lititz, Pa. 17543 • 717-471-4694 or 717-581-0935

Antiques In Manchester



PART TWO



J & R Ferris
ANTIQUES

Boonville, NY • 315 542-1643
www.jandrferriantiques.com • rkentiana@yahoo.com
Exhibiting at Antiques in Manchester
For information on Rockwell Kent see
www.scotrferris.com



DON OLSON FINE AMERICAN ANTIQUES, Rochester, N.Y. — Colorful, perching bird fraktur drawing, Pennsylvania, circa 1840, and in watercolor. Highly stylized rendering of a rooster or chicken with yellow body accented by bittersweet outlines, the wing further highlighted by green which is echoed in the sprigs and leaves upon which the bird perches, and its beak.



PAUL & KAREN WENDHISER, Ellington, Conn. — Hector Aguilar bracelet, marked HA, 940 (silver), eagle, Taxco, heavy 4 oz, approximately 7 inches and dating circa 1945. See page 100 of the book *Mexican Silver* by Morrill & Burke.

JAMES & NANCY GLAZER, Bailey Island, Maine — Spice box, circa 1810.



ROBERT SNYDER / JUDY WILSON, Wiscasset, Maine — Graphic Amish crib quilt in jewel tones, professionally mounted and measuring 36 by 30 inches.



ROBERT SNYDER / JUDY WILSON, Wiscasset, Maine — Orange and lime Smile bottles, retaining perfect paint and the original bottle caps.



ORIENTAL RUGS LTD, Old Lyme, Conn. — A magnificent finely woven Afshar measuring 4 feet 3 inches by 6 feet.



DERIK PULITO, Kensington, Conn. — Eastern Connecticut writing arm Windsor fanback chair attributed to E. Tracy. It is all original, with great patina, chestnut, poplar, butternut tablet, 17¾-inch seat height, 43 inches tall and 36-inch span, circa 1790.



American Antiques
JAMES & NANCY GLAZER est. 1969

A superb sign with black sand background and gold leaf letter outlined in yellow all original including hanger. Wonderful carved moldings with remnants of silver paint.

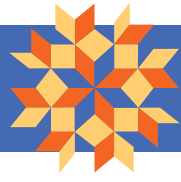
Celebrating five decades at the pinnacle of iconic American craftsmanship

P.O. Box 222, Bailey Island, ME 04003 • (207)833-6973

www.glazerantiques.com



PART TWO



Antiques In Manchester



DOVER HOUSE ANTIQUES, Louisville, Ky. — Tiger maple one-drawer stand, New England, circa 1810.

*Wednesday, August 5
11 am - 7 pm
Thursday, August 6
12 pm - 6 pm*



GREG K. KRAMER & Co., Robesonia, Penn. — Full-length portrait of a boy with toy, Virginia origin.



CHARLES WILSON ANTIQUES & FOLK ART, West Chester, Penn. — It is believed that this wood carved American lady bust figurehead was on a Long Island small long boat. Carved from pine, it retains a great surface and is in fine condition, measuring 12 by 11 by 8 inches. It dates circa 1840 and is mounted on a wall wedge for display.

ELLIOTT & GRACE SNYDER

P.O. Box 598 • 37 Undermountain Road
South Egremont, MA 01258
413-528-3581 • info@elliottandgracesnyder.com
www.elliottandgracesnyder.com



An unusually large and boldy carved spoonrack/wall box in old red paint. American, prob. NY, early 19th c, 28-3/4" h.

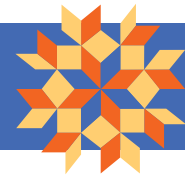
Exceptional Decorated Blue Box With Compotes Fruit & Conch Shells New England Circa 1820



Hilary & Paulette Nolan

FALMOUTH MASSACHUSETTS HPNOLAN@MAC.COM 508 548 0127

Antiques In Manchester



PART TWO



Colette Donovan

Early American Country Antiques with Textiles

Miniature Yarn-Sewn Floral
8 1/2 X 12"

978.346.0614



DERIK PULITO, Kensington, Conn. — True Americana: the "Fischer" bible box or as Kettel proclaimed it as a "desk box." Richard Fischer owned this in the 1920s and is featured as plate 107 in Kettel's book *The Pine Furniture of Early New England*.



GRONNING AMERICAN ANTIQUES, Shaftsbury, Vt. — Dating from the Eighteenth Century, an all original New England press bed in red paint with the original yoke.



STEVEN S. POWERS, Brooklyn, N.Y. — Aaron Siskind (1903-1991), "The Tree," silver gelatin print, Martha's Vineyard, North Tisbury, Mass., 1974, 7 by 7 inches sight.

PAUL & KAREN WENDHISER

P.O. Box 155 ~ Ellington, CT 06029 ~ 860-872-9600



American family memorial. Wrought by Avilda Sayles, Franklin (MA) at Wrentham Academy. Avilla was born March 6, 1788 and died Jan. 13, 1866. The memorial is for two of her siblings, Nabby Sayles died Sept 30, 1799 age 3 and Lavinia Sayles died June 7, 1786 aged 7 years. Silk on silk. Original eglomise glass and gold frame. First quarter 19th century. 23 1/2" w X 19 1/2" h.



LANA SMITH

Antiques & Design

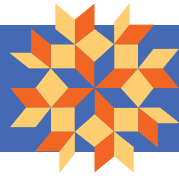


Edgar Tolson wood carving. The Snake Charmer
Compton, Ky. 1904-1982

specializing in American folk • textiles • decorative arts

502-553-9491 • Lsmithfolk@aol.com

PART TWO



Antiques In Manchester

Garvey Rita Art & Antiques

322 Park Road • West Hartford, CT 06119
www.garveyrita.com
info@garveyrita.com • 860-983-6563

B.J.O. Nordfeldt (1878-1955)
Birds in Flight, 1946, Oil on panel, 30 x 42 inches



GREG K. KRAMER & Co., Robesonia, Penn. — Bird tree shadow box from Lancaster County, Penn.



COLETTE DONOVAN, Merrimacport, Mass. — Hand carved Clydesdale horse, Nineteenth Century.

DENNIS RALEIGH AMERICAN ANTIQUES & FOLK ART, Wiscasset, Maine — Two-piece folding Parcheesi gameboard in excellent color and condition with in-use wear. It measures 20 inches square.



JOHN KEITH RUSSELL ANTIQUES, INC.



Shaker
"Turning Chair"
New Lebanon, NY.
Circa 1860

(914) 763-8144 • email: jkr@jkrantiques.com
110 SPRING STREET, SOUTH SALEM, N.Y. 10590
www.jkrantiques.com



Daniel and Karen Olson

Dealing in authentic antiques for over 35 years
1445 Route 300, Newburgh, New York 12550

Home Phone: (845) 564-0572
Cell Phone: (914) 474-1736
E-mail: olsonantiques@earthlink.net

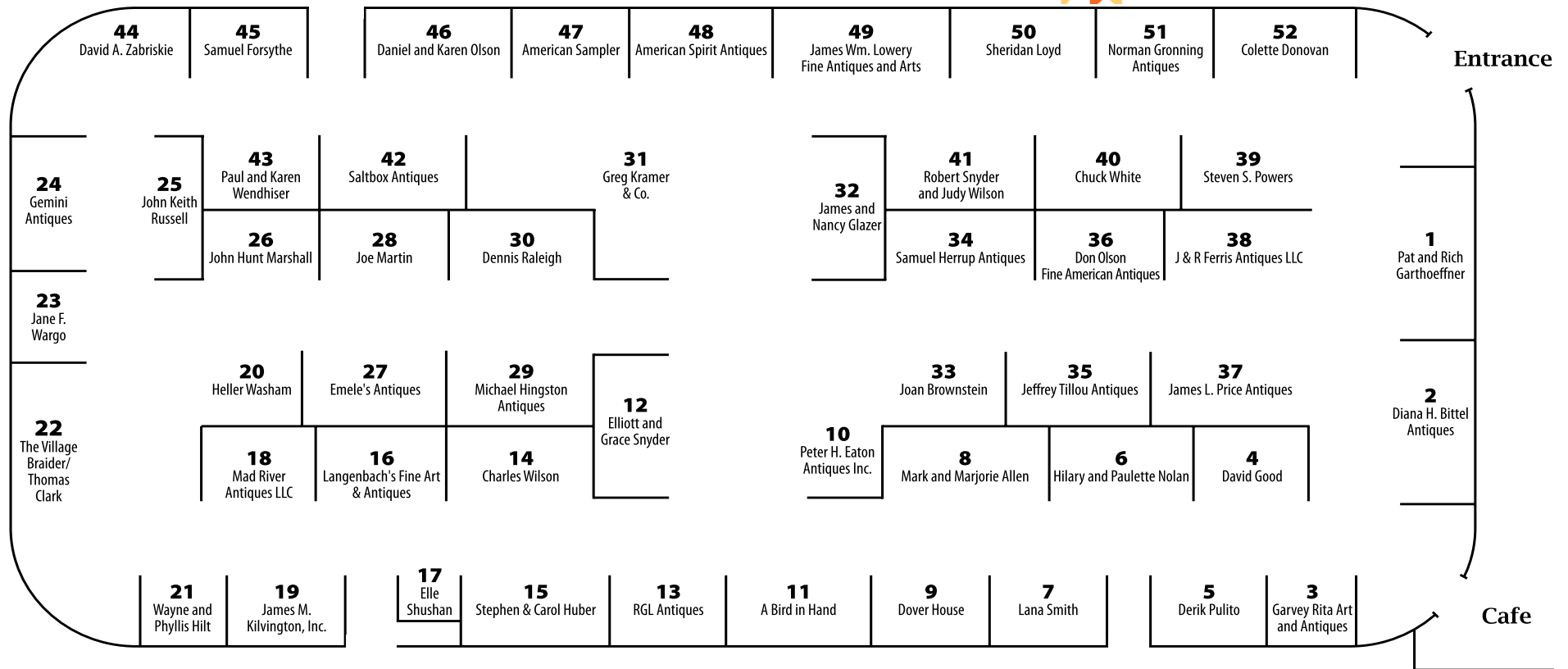


19th century American cake board of George Washington carved from a single plank of cherry. 16 3/4" x 11 5/8" x 1 1/2"

Antiques In Manchester



PART TWO



A Bird in Hand # 11
PO Box 236
Florham Park, NJ 07932
973-410-0077
Ron@Birdinhand.com
www.abirdinhand.com

Mark and Marjorie Allen # 8
32 Artisans CT
Gilford, NH 23249
603-644-8989
mandmallen@antiquedelft.com
www.antiquedelft.com

American Sampler # 47
22021 Peach Tree Rd
Boysds, MD 20841
301-972-6250
smiths@castirononline.com
www.castirononline.com

American Spirit Antiques # 48
PO Box 11152
Shawnee Mission, KS 66207
913-345-9494
tedati@aol.com
www.AmericanSpiritAntiques.com

Diana H. Bittel Antiques # 2
510 Fishers Rd.
Bryn Mawr, PA 10910
dhabantique@aol.com
dianabittelantiques.com

Joan Brownstein # 33
24 Parker Rd
Newbury, MA 01957
978-465-1089
Joan@americanfolkpaintings.com
www.americanfolkpaintings.com

Colette Donovan # 52
98 River Rd
Merrimacport, MA 01860
978-346-0614
colettedonovanantiques@comcast.net

Dover House # 9
2000 Frankfort Ave
Louisville, KY 40206
502-899-1699
crsmith2002@aol.com

Peter H. Eaton Antiques Inc. # 10
24 Parker St
Newbury, MA 01951
978-465-2754
peter@petereaton.com
www.petereaton.com

Emele's Antiques # 27
443 Rt. 313
Dublin, PA 18917
215-249-9123
emelesantiques@hotmail.com

J & R Ferris Antiques LLC # 38
3000 Moose River Rd
Boonville, NY 13309
315-542-1643
rkentiana@yahoo.com
www.scottrferris.com

Samuel Forsythe # 45
147 W. Cooke Rd
Columbus, OH 43214
614-261-7489
sam_forsythe2002@yahoo.com

Gemini Antiques # 24
PO Box 635
Oldwick, NJ 08858
908-823-4049
Geminitoys@earthlink.net

Pat and Rich Garthoeffner # 1
601 Willow Green
Lititz, PA 17543
717-471-4694
Garthgallery@comcast.net
www.garthoeffnergallery.com

Garvey Rita Art and Antiques # 3
322 Park Rd
West Hartford, CT 06119
860-233-1730
info@garveyrita.com
www.garveyrita.com

James and Nancy Glazer # 32
PO Box 222
Bailey Island, Maine 04003
207-833-6973
info@glazerantiques.com
www.glazerantiques.com

David Good # 4
7887 State Rtd. 177
Camden, OH 45311
513-796-2693

Norman Gronning Antiques # 51
6645 VT Route 7A
Shaftsbury, VT 05262
802-375-6376
norman Gronning@earthlink.net

Heller Washam Antiques # 20
1235 Congress St
Portland, ME 04102
207-773-8288
kimberlywasham@gmail.com
www.antiquesandfineart.com/hellerwasham

Samuel Herrup Antiques # 34
116 Main St.
Sheffield, MA 01257
413-229-0424
herrup@verizon.net
www.samuelherrup.com

Wayne and Phyllis Hilt # 21
176 Injun Hollow Rd.
Haddam Neck, CT 06424
860-267-2146
Philt@snet.net
www.hiltpewter.com

Michael Hingston Antiques # 29
PO Box 570
Etna, NH 03750
(603) 496-2584
mike@mhingston.com
www.mhingston.com

Stephen & Carol Huber # 15
40 Ferry Rd
Old Saybrook, CT 06475
860-388-6809
Hubers@AntiqueSamplers.com
www.AntiqueSamplers.com

James M. Kilvington, Inc. # 19
PO Box 4666
Greenville, DE 19807
302-734-9124
jkilv@comcast.net

Greg Kramer & Co. # 31
27 West Freeman St.
Robesonia, PA 19551
610-693-3223
Greg@gregkramerandco.com
www.gregkramerandco.com

Langenbach's Fine Art & Antiques # 16
164 Elm St
Kingston, MA 02364
781-585-6529
langenbach@verizon.net

**James Wm. Lowery
Fine Antiques and Arts # 49**
8279 Ashington Dr.
Baldwinsville, NY 13027
315-638-1329
jlowery5@twcny.rr.com
www.loweryantiques.com

Sheridan Loyd # 50
2520 Forest
St. Joseph, MO 64506
816-364-5027
sheridanloydantiques@yahoo.com
www.sheridanoyd.com

Mad River Antiques LLC # 18
13 Gloucester Lane
North Granby, CT 06060
860-653-5733
madriverrantiques@aol.com
www.madriverrantiques.com

John Hunt Marshall # 26
28 North Maple St
Florence, MA 01062
413-529-9995
johnhuntmarshall3@gmail.com

Joe Martin # 28
733 SchoolHouse Rd
Brownington, VT 05860
802-754-6559
jmartin107@hotmail.com

Hilary and Paulette Nolan # 6
PO Box 583
Falmouth, MA 02541
508-548-0127
hpnolan@mac.com

Daniel and Karen Olson # 46
1445 Rt 300, Newburgh, NY 14625
845-564-0572
olsonantiques@earthlink.net

Don Olson Fine American Antiques # 36
47 Lafayette Parkway
Rochester, NY 14625
585-385-9002
earlypieces@aol.com
www.donolsonantiques.com

Steven S. Powers # 39
360 Court St. #28
Brooklyn, NY 11231
718-625-1715
steve@stevenspowers.com
www.stevenspowers.com

James L. Price Antiques # 37
PO Box 919
Carlisle, PA 17013
717-448-9279
Jamie@priceantiques.com
www.priceantiques.com

Derik Pulito # 5
381 Percival Ave
Kensington, CT 06037
860-828-0558
ddp023@comcast.net

Dennis Raleigh # 30
PO Box 745
Wiscasset, ME 04578
734-604-0898
dgraleigh@myfairpoint.net
www.dennisraleighantiques.com

RGL Antiques # 13
18 Shy Creek Rd
Pittstown, NJ 08867
908-930-5615
rfranzese@rglantiques.com
www.rglantiques.com

John Keith Russell # 25
PO Box 414
South Salem, NY 10590
914-763-8144
jrk@jkrantiques.com
www.jkrantiques.com

Saltbox Antiques # 42
769 W. Butler Dr
Sugarloaf, PA 18249
saltboxantiques@verizon.net

Elle Shushan # 17
1600 Arch St. Suite 1603
Philadelphia, PA 19103
215-587-0000
Elle@PortraitMiniatures.com
www.PortraitMiniatures.com

Lana Smith # 7
13503 Vendetta Way #103
Louisville, KY 40205
502-452-2534
lsmithfolk@aol.com

Elliott and Grace Snyder # 12
PO Box 598
S. Egremont, MA 01258
413-528-3581
Zorvis@bcn.net
www.elliottandgracesnyder.com

Robert Snyder and Judy Wilson # 41
72 Main St
Wiscasset, ME 04578
207-882-4255
snyderwilson@myfairpoint.net
snyderwilsonantiques.com

Jeffrey Tillou Antiques # 35
39 West St/PO Box 1609
Litchfield, CT 06759
860-567-9693
jeffrey@tillouantiques.com
www.tillouantiques.com

The Village Braider/Thomas Clark # 22
48 Sandwich St.
Plymouth, MA 02360
508-746-9625
Villagebraider@gmail.com
www.villagebraider.com

Jane F. Wargo # 23
3 SpringBrook Rd
Wallingford, CT 06492
jfwargo@comcast.net

Paul and Karen Wendhiser # 43
PO Box 155
Ellington, CT 06029
860-872-9600
pkwendhiser@comcast.net

Chuck White # 40
88 Kings Highway
Warwick, NY 10990
845-544-2612
Chuck@chuckwhiteantiques.com
www.chuckwhiteantiques.com

Charles Wilson # 14
1312 Tulip Dr.
West Chester, PA 19380
orvette@comcast.net
www.wilsonfolkart.com

David A. Zabriskie # 44
PO Box 172
Lake Placid, NY 12946
518-524-9967
dazny@yahoo.com