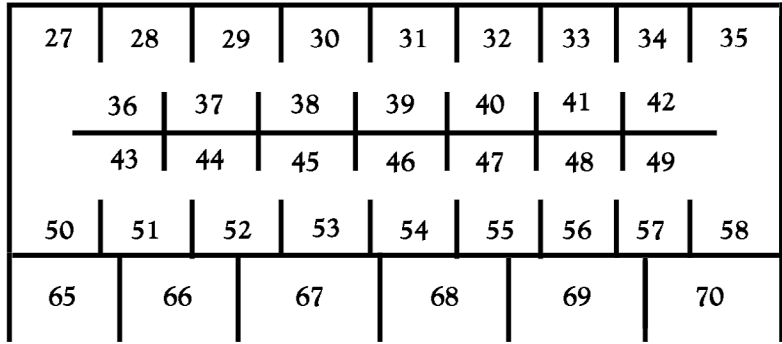
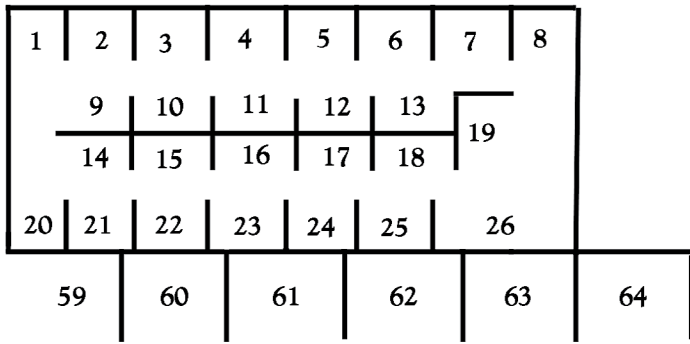


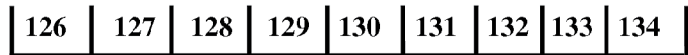
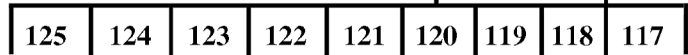
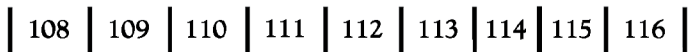
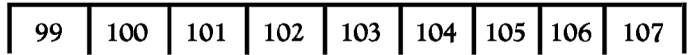
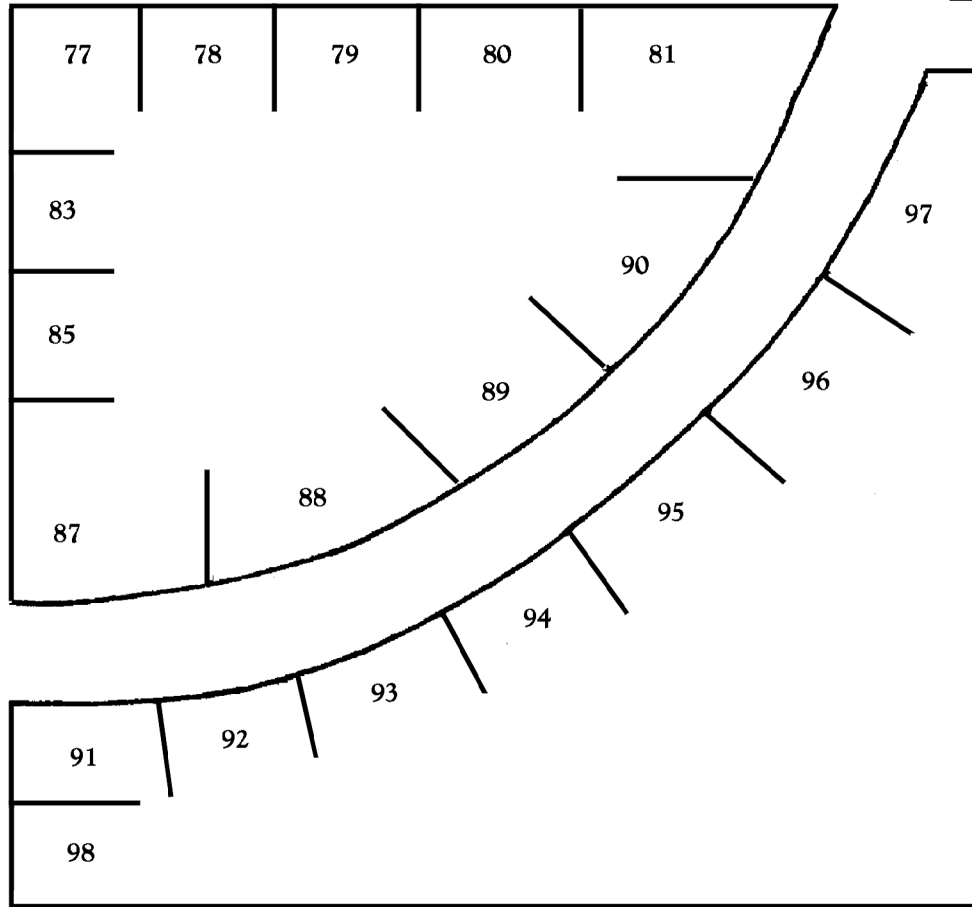
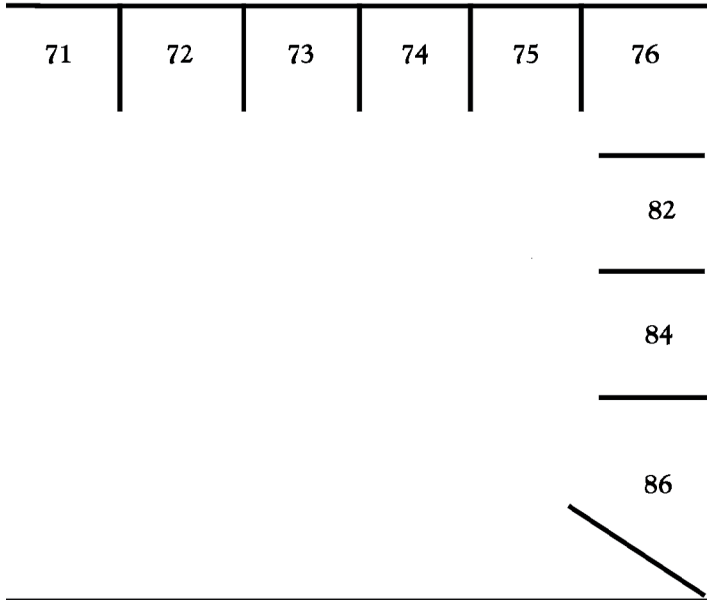
# AMERICANA CELEBRATION

SPECIAL SHOW SECTION

## THE DEERFIELD FAIRGROUNDS



ENTRANCE ↙



**CONNECTICUT**

- Blue Dog Antiques ~ 41
- County Seat Antiques ~ 124
- Easter Hill Antiques ~ 42
- Susanne Gray Antiques
- Susan Heider ~ 58
- Vee Kausel ~ 16
- Ian Mc Kelvy ~ 106
- Pantry Box Antiques
- Richmond House ~ 131
- Ryan's Antiques ~ 100
- Sasha's Antiques ~ 130
- Susan Wirth ~ 57
- Molly Garland ~ 57

**FLORIDA**

- Maxine Craft ~ 126
- Cheryl Anne Reed ~ 48

**MASSACHUSETTS**

- Bayberry Antiques ~ 121
- Days Gone By ~ 108
- Emmons & Martin ~ 89
- Elaine Fleming ~ 84
- Dianne Halpern ~ 49
- Hartman House ~ 39
- Hatch & Hedrick ~ 23
- Matt King ~ 91
- Cornelia Norris ~ 120
- Roger Pheulpin ~ 19
- John Prunier ~ 37
- Sheila Robbins ~ 28
- Barbara Rotondo ~ 114
- Anne B. Russell ~ 133
- Brian Shea ~ 96
- Natalie Warner ~ 9
- Wenham Cross ~ 27
- Woodsvieview Antiques ~ 40

**NEW HAMPSHIRE**

- Benting & Jarvis ~ 96
- Bjorn Borssen ~ 24
- Brett Cabral ~ 45
- Nancy Cummings ~ 17
- Davis & Temple ~ 75
- Durgin's Plot Antiques ~ 80
- Eagle Antiques ~ 12
- Sandy Elliott ~ 22
- Mario Gauthier ~ 87
- William Gittes ~ 5
- Bud Hughes Americana ~ 88
- Richard Kenny ~ 11
- Betty Ann Lavalley ~ 51
- Log Cabin Country ~ 66
- Shirley D. Quinn ~ 52
- Thymes Remembered ~ 110
- Richard White ~ 38

**VERMONT**

- John Bourne ~ 128
- Rick Fuller ~ 92
- Susan Gault ~ 34

**RHODE ISLAND**

- James Lawrence ~ 112
- Denise Scott Antiques ~ 99

**MARYLAND**

- Firehouse Antiques ~ 20
- Micheal Gunselman ~ 21

**MAINE**

- Barbara Bourgeois ~ 122
- Virginia Brodsky ~ 122
- Curiosity Shop ~ 76
- Gurley Antique Gallery ~ 25
- Gurley & Mavis ~ 26
- Louise D. Hardie ~ 44
- Colleen & John Kinloch ~ 29
- James Lefurgy ~ 7
- John Melby ~ 104 & 105
- The Mortimers ~ 111
- Tom Moser ~ 85
- Pumplin Patch ~ 30
- David Ramsay ~ 1 & 2
- Sea Antiques ~ 18
- Gail White Antiques ~ 43
- Jerry Willmert ~ 3

**PENNSYLVANIA**

- Anderson ~ Breish ~ 36
- Ayscough Antiques ~ 116
- Michael Caffarella ~ 118
- Cottage & Camp ~ 31
- Linda Grier ~ 113
- Don & Betty Jo Heim ~ 117
- Log House ~ 132
- Mc Clearen's Antiques ~ 10
- Tanning Antiques ~ 54
- The Cat Lady ~ 134
- NEW YORK
- American Jazz ~ 119
- Aquetuck Antiquities ~ 53
- J S Cocoman Antiques ~ 102
- Dave & Bonnie Ferris ~ 125
- West Branch Antiques ~ 101

**ILLINOIS**

- Mary de Buhr ~ 50

**OHIO**

- Scherre Mumpower ~ 13

**VIRGINIA**

- Bob Hartman ~ 109
- Malcolm Magruder ~

**INDIANA**

- Tom & Rose Cheap ~ 56
- Steve Jenkins ~ 93

**TENNESSEE**

- Bill Powell ~ 115

**NEW JERSEY**

- Nadine Pechmann ~ 46

Although every attempt has been made to present an accurate floor & field plan for the show ~ there are always last minute changes that cannot be avoided.

# ANTIQUÉ SHOW



## DEERFIELD, NH FAIRGROUNDS TUESDAY-AUGUST 4

*The Deerfield Fairgrounds is located 20 miles east of Manchester, NH ~ close enough for the adventurer, advanced collector or serious dealer to include on their visit to “Antiques Week in NH”*

EARLY BUYERS: 8AM - 10AM ★ \$20.00 per person  
GENERAL ADMISSION: 10AM - 4PM ★ \$6.00

**DIRECTIONS FROM DOWNTOWN MANCHESTER:**  
*TAKE RT. 27 or RT.101 to RT. 43 ~ follow signs.*

---

## NAN GURLEY

536 NORTH ROAD / PARSONSFIELD, ME 04047  
 (207) 625-3577

---



★ ★ ★ AMERICANA CELEBRATION ★ ★ ★  
SPECIAL SHOW SECTION



MARY de BUHR, Downer's Grove, Ill. — Oval covered splint storage box, circa 1750-80, measuring 28 by 17 inches and attributed to Cree Indian family, rare and complete together with sets of wood storage boxes and footed treen plate.



FIREHOUSE ANTIQUES, Galena, Md. — Tourist cabin sign in the form of a Dutch woman that was found in the Hunt Valley area of Maryland, and it has not been on the market in the past 30 years.



PAT HATCH ANTIQUES, Harvard, Mass. — Little glass-framed love token, 2½ by 3¼ inches, "Think of Me" sentiment banner at base of paper flowers. It dates circa 1850.



PUMPKIN PATCH ANTIQUES, Searsport, Maine — Eighteenth Century snuff box with mirror on slide top, measuring 3 by 1¾ inches, shown with a Nineteenth Century lignum vitae master salt, 2 inches high and top measuring 2⅞ inches in diameter, and a lidded miniature tapestry, initialed, measuring 2⅝ by 2⅜ inches.

PAT HATCH ANTIQUES, Harvard, Mass. — The best Nineteenth Century flannel rabbit with lettuce in his mouth, red wool lined ears and sweet little tail. All original, very heavy and measuring 6 by 4 inches.



NAN GURLEY & PETER MAVRIS  
American Country Antiques



Full bodied rooster weathervane 25" tall by 31" wide



Large, heavy pantry box in original red paint 13" tall by 17" in diameter

CORNISH, MAINE  
(207) 625-3577

MARY de BUHR



Painted Corner Cupboard sitting on small sawbuck table and pewter candlesticks

Exhibiting at Deerfield Fairgrounds  
ALL DAY TUESDAY~August 4, 2015  
See you there!



630-985-9449  
Landovermd@aol.com



☆☆☆ AMERICANA CELEBRATION ☆☆☆  
SPECIAL SHOW SECTION

*Americana Celebration Bows In Tuesday, August 4  
Deerfield Fairgrounds Site Of Annual Nan Gurley Show*

DEERFIELD is 21 YEARS OLD  
same location AS ALWAYS  
same day of the week AS ALWAYS  
same hours of the day AS ALWAYS  
same shady country setting AS ALWAYS  
same great line up of dealers AS ALWAYS  
Because "If it works - why change it?"

DEERFIELD, N.H. — New England antique show promoter Nan Gurley has announced that the 21st Annual Americana Celebration will be at the Deerfield Fairgrounds on Tuesday August 4. The fairgrounds are 20 miles from downtown Manchester where the New Hampshire Dealer's Show and other satellite shows are being held throughout the week. "Antiques Week in NH" has gained recognition as one of the major antiques events in the country and grows in popularity each year.

Early buyers will be admitted to the fairgrounds at 8 am on Tuesday for a \$20 admission fee. The early morning opening has been very well received by both exhibiting dealers and early buyers. The cooler morning temperatures are perfect for shopping, and there is plenty of time to enjoy the show. Many serious collectors and dealers enjoy the fast pace and intense competition at early buyers — it is a lot of fun with many great rewards. However, for those who prefer to shop in a more leisurely fashion, general admission, 10 am to 4 pm, will be \$10.

The fairgrounds has the perfect country ambiance for the show which will have both indoor and outdoor exhibitors offering authentic American antiques for sale to the public. The 125 exhibitors will be coming from all of the New England states plus Pennsylvania, New York, New Jersey, Virginia, Illinois, Maryland, Ohio, Florida and Indiana. In keeping with the theme of "Antiques Week in New Hampshire," "Quality rather than Quantity" is the rule at the Deerfield Fairgrounds Show and dealers have been advised to bring their best and leave the rest at home.

The emphasis of the show is, of course, Americana, and J.S. Cocoman from New York is coming back with some of the best. New to the show this year — Michael Gunselman from Delaware, with fantastic early toys. Colleen

Kinloch from Maryland and Maine will bring examples of Maine country furniture. Pumpkin Patch Antique from Searsport is here for its second year and can be expected to offer many choice examples of Americana found in Maine.

Mary de Buhr is making the trip from Illinois with great early American country furniture and accessories. You can always expect to find a few pieces of high-end New England furniture from Sandy Doig dba Karen Alexander Antiques from Somers, Conn. Ian Mc Kelvey from South Windham, Conn., will be returning with choice American furniture. John Melby from Eastport, Maine (which is way down East as they say in Maine) will return with Eighteenth Century cupboards and early architectural. Log Cabin Country Primitives from Meredith, N.H., will be mounting an outdoor booth filled with primitive country furniture. Color and surface is a priority at the Deerfield Show, so expect to see a lot of original paint on the many fine examples of Eighteenth and Nineteenth Century New England furniture.

Early textiles, hooked rugs and early children's things have always been a strong suit at this show. Pat Hatch and Kyle Hedrick from Harvard, Mass., and The Cat Lady from Bangor, Penn., will be on hand again to delight collectors of early children's things. Sandy Elliot from Exeter, N.H., will also be returning, as will Vee Kausel from Harwinton, Conn.; Elaine Fleming, Middleboro, Mass.; Betty Anne Lavalle, Hampton, N.H.; and Anderson-Breish, Fort Washington, Penn.

Another category that is well represented is the field of early ceramics, including New England redware pottery, soft paste, yellowware, and historical Staffordshire. Russell Scheider is returning with a choice selection of mocha and redware. Linda Davis and Steve Temple from Alton, N.H., will display yellowware, mocha and stoneware. Jane MacLean from York Beach, Maine, will offer beautiful early soft paste and Mario Gauthier from Auburn, N.H., will be bringing high-end Staffordshire china and other ceramics.

Folk art, painted pantry boxes and wooden bowls, paint-

ings and appropriate decorative smalls will fully round out this exciting show. Richard White from Walpole, N.H., is an eclectic dealer that is well known for his terrific variety of choice early smalls. Louise Hardie, also known for fabulous smalls, will be returning along with Scherre Mumpower from Ohio; Rick Fuller, South Royalton, Vt.; Matt King, Marshfield, Mass.; Sheila Robbins, Framingham, Mass.; and Brett Cabral, Derry, N.H. Jim Lefurgy from Wiscasset, Maine, will display a great selection of American Indian items.

For a variety of choice Americana we have Bill Gittes from Barrington, N.H.; Nadine Pechmann, Mendham, N.J.; Susan Gault, Thetford Center, Vt.; Dianne Halpern, Townsend, Mass.; American Vernacular, Lititz, Penn.; Tanning Antiques, Pittsburgh, Penn.; Tom and Rose Cheap, Scottsburg, Ind.; Wenham Cross Antiques, Topsfield, Mass.; and a host of others who will be returning.

We should not forget to mention our selection of high-end decorative dealers: Firehouse Antiques (Paul Thein and Dough Warriner) from Gallena, Md., come a great way to mount a smashing booth filled to the brim with both period antiques and also great modernism and decoratives. The same is true for David Ramsay from Cape Porpoise, Maine, who will create a double booth of fine folk art and amazing objects. John Prunier of 20th Century Design from Warren, Mass., will bring an extraordinary collection of small unusual objects from all periods.

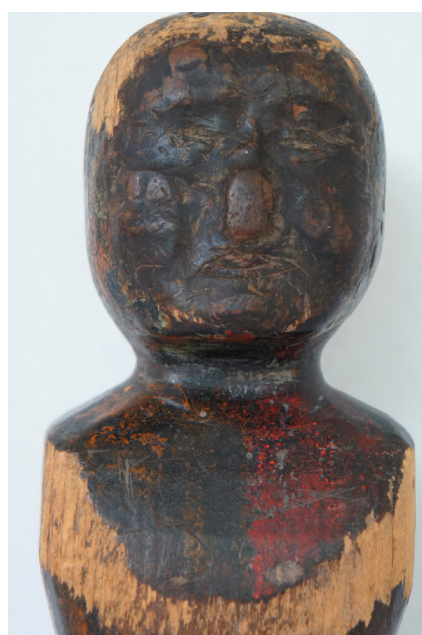
Unlike the other more formal shows, there will not be papered walls and spotlights at Deerfield — just great country antiques displayed in a country setting. There are two routes from downtown Manchester to the Deerfield Fairgrounds: take either Route 27 or Route 101 to Route 43. Both routes will take you to the Deerfield Fairgrounds or back to Manchester in less than half an hour. The Deerfield Fairgrounds Show is developing the reputation as the "buyable" show and would certainly be a great adventure for the serious dealer or collector of authentic American antiques.

For information, call Nan Gurley at 207-625-3577.

**Faces of Folk Art  
Antique Cloth Dolls**



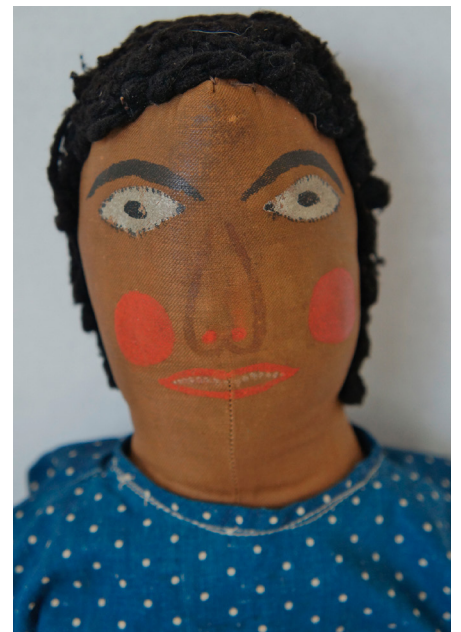
24"



18"



24"



23"



18"



21"

Textiles, Sewing Items, Country Painted Antiques, Shaker, Wallpaper Boxes, Rugs, Toys, Ephemera

PRICES AND MORE PICTURES ON  
[WWW.COUNTRYANDSHAKERANTIQUES.COM](http://WWW.COUNTRYANDSHAKERANTIQUES.COM)

Pat Hatch • 978 456 8729 • [pat@pathatchantiques.com](mailto:pat@pathatchantiques.com)

**I hope to see you at Nan Gurley's Show  
Tuesday, August 4 at Deerfield, NH**



★ ★ ★ AMERICANA CELEBRATION ★ ★ ★  
SPECIAL SHOW SECTION



## Easter Hill Antiques

ON SHARON GREEN

15 Main Street, Sharon, Conn.  
860-364-1110 • Always Call First



1830's Chintz pieced quilt, Exceptional.  
English fabrics-American made. 92x102 " Mint.



19 C Maine Indian Wall Basket.  
Walnut brown, 16" H 14" W".



Carved Wig Head.  
Poplar, Ohio

## Sheila Robbins

18th & 19th Century  
American Antiques

508-626-7162

srobbins@robbins-research.net  
Framingham, MA



PAT HATCH ANTIQUES, Harvard, Mass. — Shaker pail in the original red paint with old white interior, 12 inches in diameter at the top and 9 inches tall.



MARY de BUHR, Downer's Grove, Ill. — Hanging cupboard, circa 1840, double raised panel door, original red paint, with early wallpaper interior.



PUMPKIN PATCH ANTIQUES, Searsport, Maine — Witch's skirt painted tin candlestick, 5 inches high and a 5-inch diameter at the base.



SHEILA ROBBINS, Framingham, Mass. — A late Eighteenth/very early Nineteenth Century pine trundle bed, 37 by 50 inches, 16-inch-wide bottom boards. It has great patina.

FIREHOUSE ANTIQUES, Galena, Md. — Redware inkwell with outstanding polychrome decoration, incised dogs, parrot and lion. It is signed H. Christian Peter, dated 1860, with minor flaking.



## PUMPKIN PATCH ANTIQUES



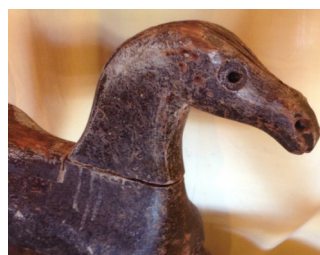
located on the scenic coastal corridor of Route One, Searsport, Maine, is delighted to be showing at

***Deerfield on August 4th***

and to offer a varied selection of country antiques

We have earned the reputation as "One of Maine's Finest Shops" over the last 40 years.

Please visit us at Deerfield, or in Searsport, or call Phyllis Sommer at 207-548-6047 anytime!  
[pumpkinpatch168@yahoo.com](mailto:pumpkinpatch168@yahoo.com)



Rare signed rocking horse by B. P. Campbell, 1853-56. Courtland St., New York





★ ★ ★ AMERICANA CELEBRATION ★ ★ ★  
SPECIAL SHOW SECTION



MARY de BUHR, Downer's Grove, Ill. — Hanging cupboard with four stone books.



PAT HATCH ANTIQUES, Harvard, Mass. — Pencil face rag doll, 24 inches, with great big hands, lovely worn body and dating circa 1890.



FIREHOUSE ANTIQUES, Galena, Md. — Delaware Valley ladder back side chair in the original condition. Its surface is old black over the original blue-grey, circa 1770, and it comes from an old Virginia estate.



EASTER HILL ANTIQUES, Sharon, Conn. — Recently found in a Litchfield estate sale, a tall case clock, English case in mahogany veneer with other highlighted woods and brass works believed to be Scottish. The painted metal face includes second and date registers.



PUMPKIN PATCH ANTIQUES, Searsport, Maine — Linsey-woolsey coverlet, circa 1840, birds feeding chicks, flowers and houses, measuring 82 by 95 inches.

FINEST FOLK ART



Farm Sign from the Hunt Valley Horse Country of Maryland. Zinc, Tin, Iron, Paint and Rust. Two sided, untouched, 26" by 30"

Firehouse Antiques Center and Firehouse Too!! are open Tuesday- Sunday 10:00 to 5:00 located on Maryland's Eastern Shore, in Galena, Maryland.

410-648-5639  
firehouseantiques.PT@gmail.com  
www.galenaantiquedistrict.com

**Exhibiting At These Shows in 2015:**  
Americana at Deerfield, NH, August 4, 2015  
The Swickley Show, Pittsburgh, PA, September 11, 12, 13, 2015

Emily and Irma Lampert

Wenham Cross Antiques



One Hill Street, Topsfield, MA 01983  
978-887-2823 • Email irmalampert55@yahoo.com

