

CHESTER COUNTY ANTIQUES SHOW

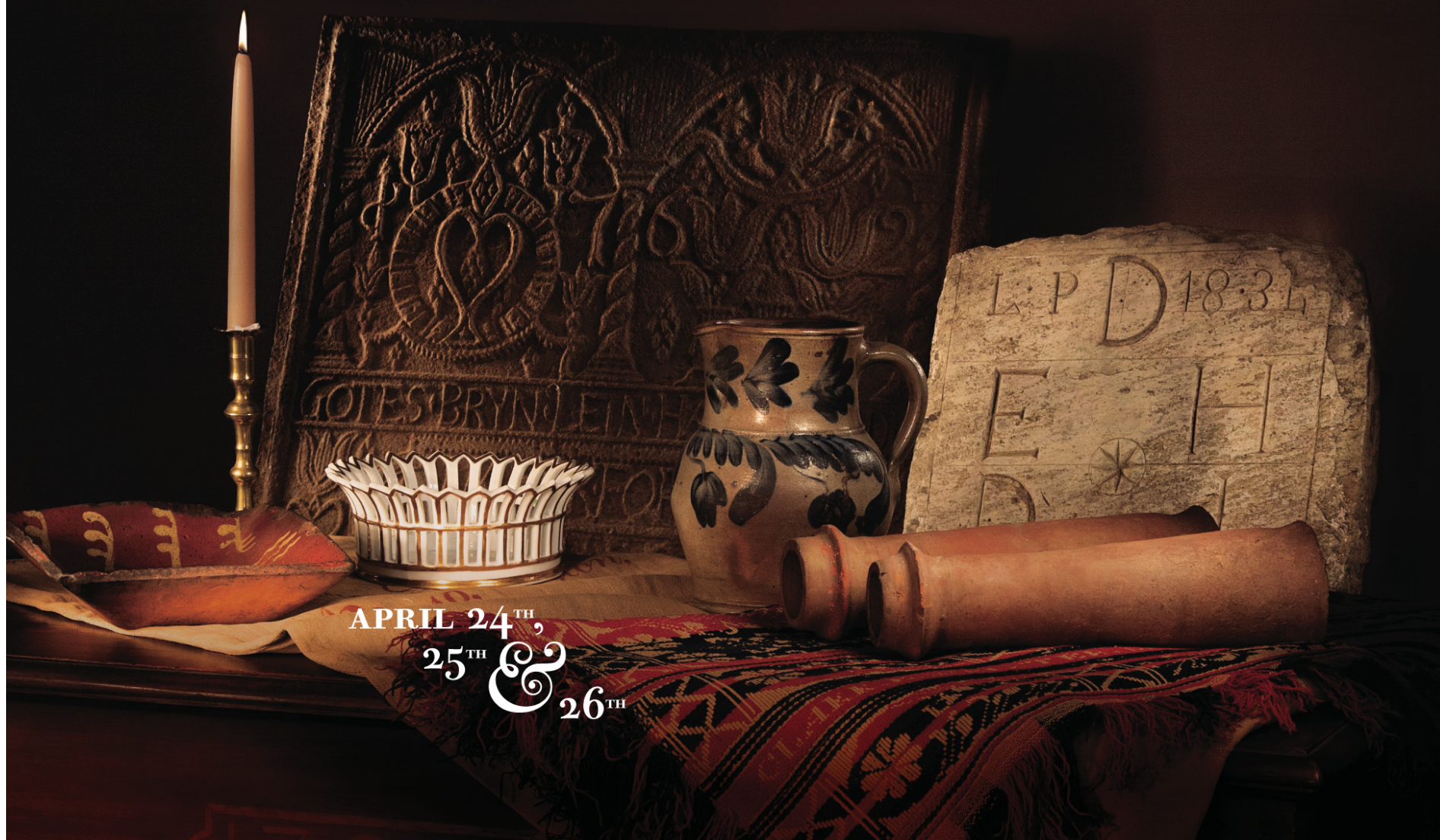
special show section



CHESTER COUNTY ANTIQUES SHOW

A BENEFIT FOR THE CHESTER COUNTY HISTORICAL SOCIETY

FROM THE EARTH:
Chester County's Raw Materials Transformed



APRIL 24TH,
25TH & 26TH

Featuring Fine Quality 18th and 19th Century Antiques.

AT THE PHELPS SCHOOL MALVERN, PA

610-692-4800 | CHESTERCOHISTORICAL.ORG

A BIRD IN HAND ANTIQUES
BRITANNIA HOUSE ANTIQUES
CHRISTINE MAGNE, ANTIQUAIRE
DAVID POWNALL WILLIS
DIXON-HALL FINE ART
DUBEY'S ART & ANTIQUES, INC.
EVE STONE ANTIQUES, LTD.
GREG K. KRAMER & CO.
HANES & RUSKIN ANTIQUES
H.L. CHALFANT AMERICAN FINE ART & ANTIQUES
HILARY & PAULETTE NOLAN
JAMES GALLAGHER
JAMES M. KILVINGTON, INC.

SHOW EXHIBITORS
JOHANNA ANTIQUES
JOSEPH J. LODGE
KELLY KINZLE ANTIQUES
LEATHERWOOD ANTIQUES
LORRAINE WAMBOLD FINE ESTATE JEWELRY
MARC WITUS ANTIQUES
MARGARET JOHNSON SUTOR
PAUL J. DECOSTE ANTIQUES
PORT 'N STARBOARD GALLERY
ROGER D. WINTER, LTD.
SAJE AMERICANA
SHAEFFER'S ANTIQUES
SCHOOL HOUSE FARM ANTIQUES

SPENCER MARKS
THE HANEBERGS ANTIQUES
THE PHILADELPHIA PRINT SHOP
THOMAS BROWN ANTIQUES
VAN TASSEL BAUMANN AMERICAN ANTIQUES
WESLEY SESSA ANTIQUES
WEST PELHAM ANTIQUES
WILLIAM R. AND TERESA F. KURAU
~ List complete as of January 15, 2015 ~

PRESENTING CORPORATE SPONSOR



CHESTER COUNTY ANTIQUES SHOW

special show section

This section was designed and published by The Bee Publishing Company, 5 Church Hill Road, Newtown, CT 06470; 203-426-8036



M. FINKEL & DAUGHTER, Philadelphia — Outstanding New Jersey sampler with excellent pictorial elements and an unusual alphabet framework by Mary V. Throckmorton of Freehold, Monmouth County, circa 1837, measuring 16 3/4 by 17 inches.

KELLY KINZLE, New Oxford, Penn. — Walnut Queen Anne two-drawer table with cabriole legs and cloverleaf feet, Pennsylvania, circa 1790.



WEST PELHAM ANTIQUES, Pelham, Mass. — Important 9 1/2-inch English molded yellowware jug showing two scenes from Uncle Tom's Cabin: "The Slave Market" (pictured) and "Eliza Fleeing with the Baby across the Frozen River." Note the "beseeching slave head" on the top of the handle. It is in very fine condition with no damage.



A BIRD IN HAND, Florham Park, N.J. — Set of six mid-Nineteenth Century exuberant tiger maple American saber leg side chairs. It can be seen in full color at www.abirdin-hand.com.



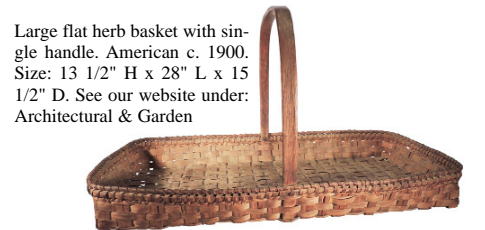
KELLY KINZLE, New Oxford, Penn. — American silver mounted sword, circa 1810, owned by John Marshall, Pittsburgh, Penn.



3 jar faces vases attributed to Weller Pottery. American, 1930's. Sizes: 2 each at 6" H x 4 1/4" D, 1 @ 2 3/4" H x 2 5/8" D. See our website under: Antique Pottery & Terracotta Objects



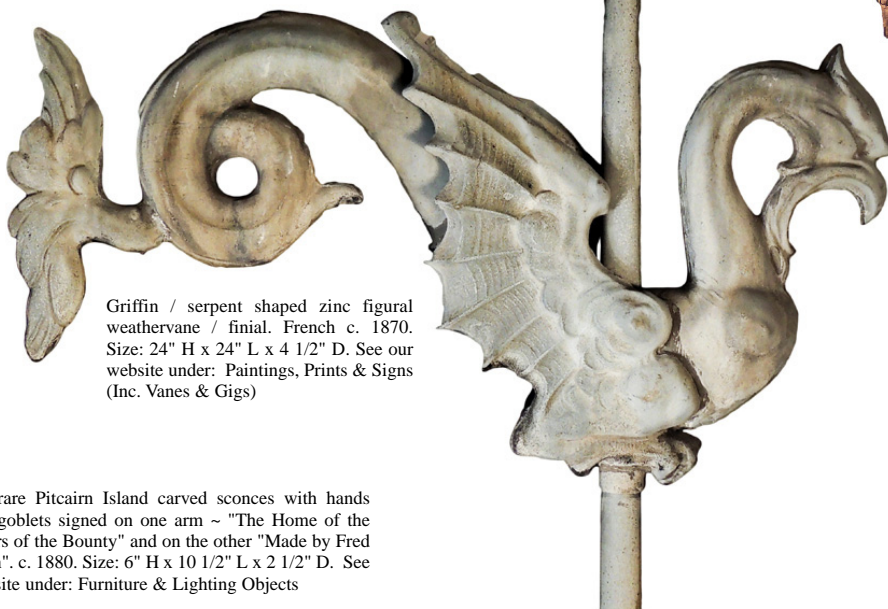
Large shop sign with carved raised letters. American, 1900's. Size: 15" H x 58" L x 3" D. See our website under: Paintings, Prints & Signs (Inc. Vanes & Gigs)



Large flat herb basket with single handle. American c. 1900. Size: 13 1/2" H x 28" L x 15 1/2" D. See our website under: Architectural & Garden



Set of 3 rare Erzgebirge carved & painted soldiers. German c. 1860. Sizes: soldiers 7" H, soldier with drum 6" H. See our website under: Toys, Games, Boards & Ephemera

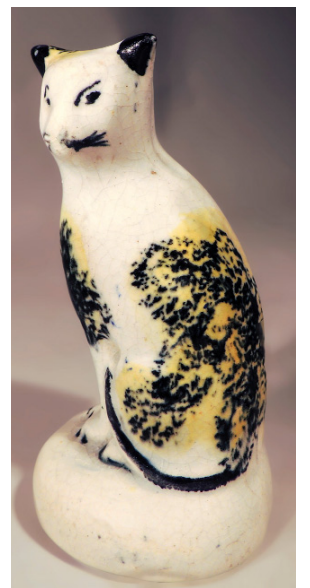


Griffin / serpent shaped zinc figural weathervane / finial. French c. 1870. Size: 24" H x 24" L x 4 1/2" D. See our website under: Paintings, Prints & Signs (Inc. Vanes & Gigs)

Miniature Staffordshire cat with black & yellow sponge decorations. English c. 1860. Size: 4 1/2" H. See our website under: Antique Pottery & Terracotta Objects



Pair of rare Pitcairn Island carved sconces with hands holding goblets signed on one arm ~ "The Home of the Mutineers of the Bounty" and on the other "Made by Fred Christian". c. 1880. Size: 6" H x 10 1/2" L x 2 1/2" D. See our website under: Furniture & Lighting Objects



Leatherwood Antiques

www.leatherwoodantiques.com 508-420-1433

CHESTER COUNTY ANTIQUES SHOW

special show section

Chester County Antiques Show Features 49 Dealers April 24–26

MALVERN, PENN. — The 33rd Annual Chester County Antiques Show will take place at the Phelps School, Friday to Sunday, April 24–26. The show, a benefit for the Chester County Historical Society, will feature more than 48 dealers from throughout the country.

The preview party is on Friday from 5 to 9 pm. Admission is \$130 or the 5 pm early admission is \$200.

The show hours are Saturday, 10 am to 6 pm, and Sunday, 11 am to 5 pm. General admission is \$15 and includes show catalog and free parking.

Scheduled lectures include “Good, Better, Best,” an examination of Eighteenth Century side chairs, candlestands and wing chairs, which will be given by Skip Chalfant of HL Chalfant Antiques and Walt Mullen of Mullen Antiques and Upholstery on Saturday, April 25, at 1 pm. At 3 pm on Saturday, Tim Coldren of Monroe Coldren and Son Antiques of West Chester, Penn., will give a lecture on “Heavy Metal...an Old Story,” and its uses in Eighteenth Century Chester County and today.

The Phelps School is at 583 Sugartown Road. For additional information, contact David B. Reinfeld at 610-692-4800 extension 267 or dreinfeld@chestercohistorical.org.



CCHS FROM THE EARTH: *Chester County's Raw Materials Transformed*

CHESTER COUNTY ANTIQUES SHOW

A BENEFIT FOR THE CHESTER COUNTY HISTORICAL SOCIETY

APRIL 24TH,
25TH &
26TH

Featuring Fine Quality 18th and 19th Century Antiques.

AT THE PHELPS SCHOOL MALVERN, PA

610-692-4800 | CHESTERCOHISTORICAL.ORG

PRESENTING CORPORATE SPONSOR



CHESTER COUNTY ANTIQUES SHOW

special show section



SCHWARZ GALLERY, Philadelphia — Richard Blossom Farley, "View of Ocean City, NJ," oil on panel, 11¾ by 16 inches.



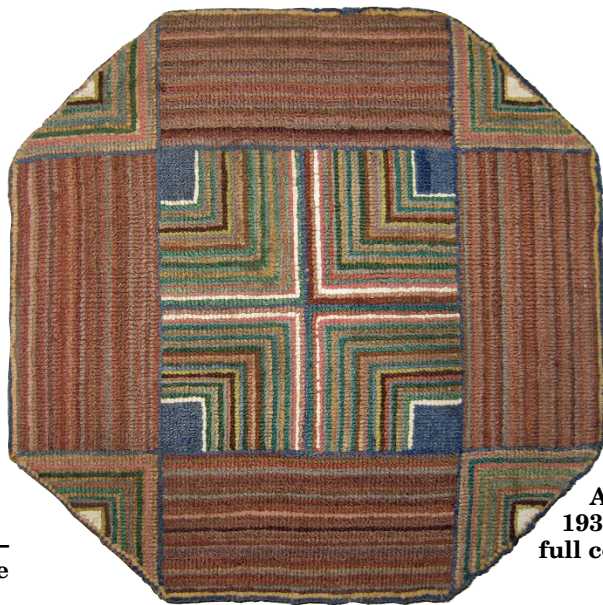
A BIRD IN HAND, Florham Park, N.J. — Horned owl decoy by Herter's, Waseca, Minn., is made of balsa wood and retains its original paint and bear claw beak, circa 1947-54. It can be seen in full color at www.abirdinhand.com.



M. FINKEL & DAUGHTER, Philadelphia — Excellent Massachusetts sampler by Ruth Tilden Daman of Scituate, dated 1807, measuring 19¾ by 16¾ inches. Provenance: Theodore H. Kapnek collection.



SCHWARZ GALLERY, Philadelphia — Emanuel Gottlieb Leutze, "Portrait of Alice Anna Morris," oil on canvas, 27 by 22 inches.



A BIRD IN HAND, Florham Park, N.J. — "Octagon Grenfell" is a geometric design hand hooked from silk stockings by Grenfell Labrador Industries, S. Anthony, Newfoundland, with label on reverse. Circa 1930s, it measures 12½ by 12 inches. It can be seen in full color at www.abirdinhand.com.

AMERICA'S LEADING ANTIQUE SAMPLER AND NEEDLEWORK DEALER



Outstanding Chester County, Pennsylvania Sampler by Sarah H. James
Worked at Elizabeth Passmore School, East Goshen Township, 1820
Original ribbon. Sight size: 23.25 by 26 inches.

M. Finkel & Daughter.

est. 1947

AMERICA'S LEADING ANTIQUE SAMPLER AND NEEDLEWORK DEALER
936 Pine Street • Philadelphia, PA 19107 • tel: 215-627-7797 • fax: 215-627-8199
www.samplings.com • mailbox@samplings.com

CHESTER COUNTY ANTIQUES SHOW

special show section



M. FINKEL & DAUGHTER, Philadelphia — Important Delaware Quaker sampler by Elizabeth McFarland, 1822, Appoquinimink Hundred, New Castle County, measuring 16½ by 16 inches; published on page 74 in *Wrought with Careful Hand: Ties of Kinship on Delaware Samplers*, by Lynne Anderson and Gloria Allen.



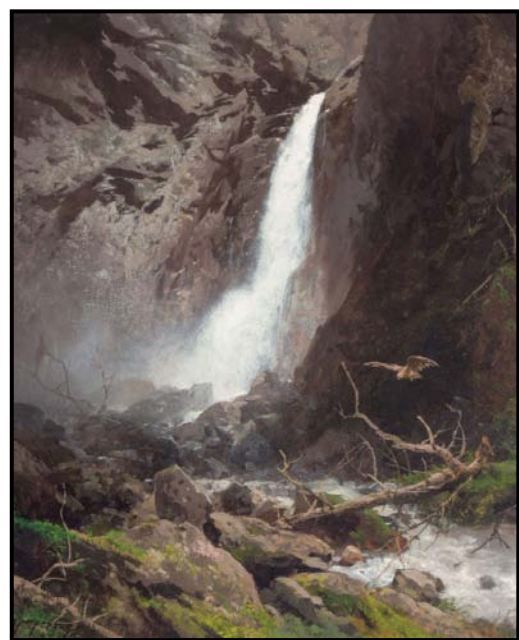
KELLY KINZLE, New Oxford, Penn. — Walnut shrank, Lancaster County, Pennsylvania, circa 1750-60, rare small size.



LEATHERWOOD ANTIQUES, Sandwich, Mass. — Carved wooden little box shaped as an elephant with ivory tusks and glass eyes in exotic wood, English, circa 1880, measuring 2 inches high by 3½ inches long by 1½ inches deep. See our website www.leatherwoodantiques.com under Variety of Rarities & Curious.



SCHWARZ GALLERY, Philadelphia — Jules-Alexis Muenier, "Landscape," oil on canvas, 25½ by 21¼ inches.



SCHWARZ GALLERY, Philadelphia — Herman Herzog, "Lower Yosemite Fall," oil on canvas, 20⅞ by 17 inches.

Kelly Kinzle

FINE ANTIQUES

9 Center Square,
P.O. Box 235
New Oxford, PA 17350
kellykinzle@comcast.net

717-495-3395

Mahogany Dressing Table.
Philadelphia, Pennsylvania.
Circa 1770-80. 34" wide,
23" deep, 30" high.



CHESTER COUNTY ANTIQUES SHOW

special show section

West Pelham Antiques

Michael A. Weinberg

24 Amherst Road

Pelham, MA 01002-9624

www.westpelhamantiques.rubylane.com

westpelhamantiques@gmail.com

413-253-1847 413-575-5523 (cell)

American & English Needlework Samplers

Early English Ceramics

American Country in Paint



c. 1820
Needlework Wooly
on Silk of a ship-
wreck scene along
a rocky coastline.
Possibly an
English school-
girl's rendition of
the Theodore
Gericault painting
The Raft of the
Medusa. 17 3/4" x
15 1/2" (sight);
archival framing.
Wonderful earth
tones.

CHESTER COUNTY ANTIQUES SHOW

April 24th, 25th & 26th

Featuring Fine Quality 18th and 19th Century Antiques

At The Phelps School, Malvern, PA

610-692-4800 • ChesterCoHistorical.org

A Benefit For The Chester County Historical Society



KELLY KINZLE, New Oxford, Penn. — Ivory paint decorated settee, Pennsylvania, circa 1840-50

A Bird In Hand Antiques



Florham Park, New Jersey 07932

Tel. (973) 410-0077

antiques@abirdinhand.com

www.ABirdInHand.com

"Sculpture of a Hand"



Refined sculpture of a hand created out of granite.
27 3/8" high x 9 1/2" wide x 8 1/4" deep
Circa: 1st quarter 20th century

Stoneware - Decoys - Painted Furniture - Folk Art



LEATHERWOOD ANTIQUES, Sandwich, Mass. — A diminutive child's mug with overglazed colors depicting a rooster, English, circa 1840, measuring 2 inches high by 2 inches deep. See our website www.leatherwoodantiques.com under 19th Century Children's Pottery ~ Mugs.



LEATHERWOOD ANTIQUES, Sandwich, Mass. — Early childhood girl's schoolhouse sampler portraying the schoolhouse and a verse on the importance of education, "Tis Education forms the youthful mind just as the twig is bent the trees inclind," English, circa 1830, measuring 16 inches high by 20 inches wide. See our website www.leatherwoodantiques.com under Textiles & Samplers.

CHESTER COUNTY ANTIQUES SHOW

special show section

LEATHERWOOD ANTIQUES, Sandwich, Mass. — Pair of oversized elegant patinated bronze dolphin andirons with torches and swags, American, early mid-1900s, measuring 24 inches high by 11 inches wide by 19 inches deep. See our website www.leatherwoodantiques.com under Furniture & Lighting Objects.



David Pownall Willis

18th & 19th c. Porcelain, Pottery, Silver & Glass

908-757-0102

cameo98@bellatlantic.net

www.davidpownallwillis.com



English Adams Blue & White Pottery Plate, c. 1820. Lions Pattern



English Worcester Porcelain Deep Dish, c. 1775



M. FINKEL & DAUGHTER, Philadelphia — Fine Honeybrook, Chester County sampler by Sarah Stanley Brown, circa 1835, Pennsylvania, measuring 17 by 23¾ inches.

April 24th, 25th & 26th

Featuring Fine Quality 18th and 19th Century Antiques

At The Phelps School, Malvern, PA

610-692-4800 • ChesterCoHistorical.org



THOMAS MORAN (1837–1926) *Sunrise at Mid-Ocean*; Oil on canvas, 25 × 30 inches

SCHWARZ

www.schwarzgallery.com

1806 Chestnut Street Philadelphia PA 19103 215 563 4887 www.schwarzgallery.com
Art Dealers Association of America; Art and Antiques Dealers League of America; CINOA