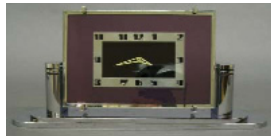




Antique Clock and Watch Auction

Ypsilanti, Michigan

Saturday July 31st, at 11:00 a.m.



Featuring items from the Estates of Former NAWCC Members Robert Anthony of Alma, Michigan and Ken Schwartz of Farmington, Michigan



Over 350 lots including: Marine Chronometers and movements by George Margetts, John Bennett, Lister & Sons, Barwise London, John Bliss and Longines.

American Calendar Clocks: Featuring a Rare Gale Drop Calendar #1, Ithaca "Belgrade" model 5 1/2, Ithaca "Index" Calendar, Waterbury model 25 wall clock, Waterbury "Peoria" wall, Ithaca Hanging Cottage #7, Ithaca #10 "Farmer", Seth Thomas Parlor #5 shelf clock and others.

American Shelf clocks: Birge & Fuller Wagon Spring and Fusee shelf clocks, Hills, Goodrich & Co. Ogee mantle clock, Elisha Manross Double Steeple, Peck, Haydon & Co. Double decker, Birge, Peck & Co, Seth Thomas, Joseph Ives, Daniel Pratt, Jerome & Darrow, George Mitchell, Ephriam Downs and many others.

Tall Clocks: Good turn of the Century Railroad Station floor clock with Grand Sonnerie chime, W S Rose & Son Astronomical regulator, 18th c English Chinoiserie Tall clock, 18th c John Dobie Oak Grandfather with Brass dial "Rocking Ship" movement, Several 19th c Scottish and Irish Grandfathers, 5 Tube Herschede Hall clock, French Morbier Farmhouse clock and others.

Featuring: English Bracket clocks, Early Irish "Ballast Office" clock, 19th c American Banjo clocks, Tiffany Crystal Regulator, 19th c French Gilded figural clocks, Vienna Regulators, Tiffany/Chelsea Bronze mantle clock, Several 19th c English Fusee Gallery clocks, American Column shelf clocks, "Durham" Tobacco novelty clock, Swiss "Detent" escapement model, TAVANNES Art Deco desk clock, Ansonia China clocks, German Bracket clocks, Victorian Parlor clocks inc a Kroeber "Albatross", Japy Frères 3 pc Clock set, 19th c Viennese Portico clock, French Carriage clock w/repeat, Unusual 19th c Thomas Benbow "Drum Head" table clock, 18th c English Dutch and French open wall clocks, Early 19th c Scottish Dwarf Tall clock, American Store Regulators, German wall clocks and Freeswingers by Gustav Becker, Kienzle, Junghans etc., Early Chinese Fusee table clock, Gallery clocks, American OGEEs, Steeple, Cottage and Beehive shelf clocks, Victorian Shelf clocks including a Jerome "Pro-

gramme", Lenzkirch 2-weight Vienna Regulator, Kitchen Shelf clocks, Novelty clocks, Black Mantle clocks and many others. **Over 50 Pocket Watches:** Including 18th c Swiss watch by Merillion, 65mm Swiss Traveling clock, Swiss and English Chronographs, 18k Swiss Gold watch by De Sufry, Geneva, 21j Hamilton 940 Railroad watch, 21j "Father Time" RR by Elgin, AWW Co "Appleton Tracey" and "P S Bartlett" models, Hebdomas 8-day, Jules Jurgensen 1950's 14k Wristwatch, several pocket watch movements including an Agassiz Swiss Split second Chronograph, Howard models L, N and "Reed's Patent", Swiss repeater mvt, a Charles Jacot movement and others.

Also a large selection of Clock, cases, movements, parts, reference books and much more.

Preview July 30th 9:00-5:00 and July 31 9:00-11:00

Absentee bids accepted or Bid live online at: www.LiveAuctioneers.com
12.5% Buyer's Premium on all lots

Schmidt's Antiques Inc.

AUCTIONEERS SINCE 1911

5138 West Michigan Ave., Ypsilanti, Michigan • (734) 434-2660

Do you have Quality Clocks to sell? Contact Chuck Schmidt NAWCC #71535

Join our E-mailing list at: SchmidtsAntiques@aol.com. Call NOW for consignment Information

Check out our "Schmidt's Friday Night Auctions" the 4th Friday of each month

View our upcoming Auction Schedule at: www.Auctionzip.com (Enter Auctioneer #6424)



On-Site Vermont Country Auction

Of Antiques, Accessories, Tools, Snowmobile
The Taylor Farm, Bridgewater, Vermont

Friday, July 30 2010 at 10:00 AM

Preview from 8:00 AM, Morning of Sale

We have been commissioned by the Taylor Family daughters to sell the contents, after choices, of their 3 generation farm. Additions from the family and others make for a complete days sale under the tents- over 400 lots. Items focus on country, plenty of pasture parking, please plan to attend.

Location: Directly off Rte-4, from Woodstock, Vermont, travel Rt-4 west for approximately 6 miles, turn onto Mill Rd. for a short distance to Curtis Hollow Rd. to location. From Rutland, Vermont travel Rt-4 east for approximately 25 miles and turn onto above roads- next to the Bridgewater Mall- watch for auction signs.

In Part: Federal birdseye maple and cherry graduated 4-drawer chest on high French feet; Queen Anne blanket chest with simulated and three real drawers in old red surface on cut out base; Chippendale blanket chest w/ simulated and real drawers; other country two drawer blanket chest on cut out base; Federal bow front chest; country curly maple secretary; good country floor cupboard w/ traces of old paint w/ full length door; fine country tin pie safe with traces of old blue paint; other country pieced pie safe; country blue paint drysink; country chest on ball feet; bow back and other Windsor chairs; stretcher base and other tavern tables both oval and square, some in blue paint; several candle and one drawer night stands; Hepplewhite drop leaf table; good country Windsor deacons bench; set of 4 country decorated chairs; Vermont pine chest w/ blanket drawer; country pine 2 part secretary, Vermont; Salem Windsor rocker; various country blanket boxes; country pine work table; Sheraton deep drop leaf table on rope turn legs, w/ book; 2 old captains chairs; country highboy base; country Queen Anne tilt top tea table; country Queen Anne drop leaf table; tool chest in blue paint; Victorian desk w/ columns; set of four bentwood chairs; cutter sleigh; push sled; several paint decorated sleds; other sleds; Victorian cabinet; walnut stanchion rocker; wooden wagon; Adirondack porch chairs; old pair of metal chairs; folk art bird house; much more.

Accessories: Exceptional country game board in wonderful old surface; other country game board; several country paintings by J.W Marshall 1886; great collection of 24 early photos in ripple frame; Mocha bowls; great collection of approximately 35 pieces of blue decorated stoneware- crocks and jugs; ovoid jugs; Charlestown jug; several early homespuns- some dated; good early pair of ice skates; running horse weathervane; Limoges china service for twelve; Enterprise coffee mill; yellow ware crock; Rockingham cow creamer; pair of Buffalo pottery pitchers; several sailor made ships in bottles; country kitchen utensil rack with wooden utensils; several early candle lanterns; onion lanterns; primitive lantern; interesting life saving diorama; country document box; several Wilder paintings; old country iron pots; candle mold; bed warmer; good Riley Whiting shelf clock with reverse painted ship tablet; other clocks; pair of log calipers; hooked

rugs; duck decoys; pair of snowshoes; old wooden skis; several more items to be uncovered in the attic; old Bokhara oriental rug; other old scatter rugs; few modern items including pine trestle base table; stands; tables; gas fireplace by Pro- Com; Funk and Wagnell box with books; spatter ware pitcher; large Hampshire pottery vase; Weller pottery bowl; Staffordshire and Blue Willow china; binoculars and cameras; Stevens double barrel gun; 2 shot pouches; sword cane; collection of cigarette cards; flour bucket in old paint

Tools: Old anvil; collection of draw shaves; collection of hand saws; collection of wooden planers; single ox yoke; tractor seat; deer head mount; and more;

Special Interest: 1970 Spree-Horse snowmobile; several 1950's, 1960's bikes; old lumber; Sale per order of the Taylor Family, Bridgewater, VT

Terms: Cash or check, major credit cards

Tents-Seats-Caterer Absentee bids accepted / No online or telephone bidding
Sales Tax • 13% buyer's premium or 10% Buyer's Premium Cash or Check



William Smith, Inc

Specializing in Fine Antiques

AUCTIONEER and APPRAISER

Visit our Website: www.wsmithauction.com or email us at: info@wsmithauction.com

WILLIAM A. SMITH, INC.

AUCTIONEERS AND APPRAISERS

PLAINFIELD, NEW HAMPSHIRE 03781 - 603-675-2549

NH LICENSE #2825 - VT #57-702 - MA #525 - FL #AU-3179

Auctioneers William G. Smith and Kenneth R. Labnon

FOR A CHRONOLOGICAL LISTING OF AUCTION ADVERTISING IN THIS ISSUE, SEE PAGE 66.

AUCTIONEERS

D. L. STRAIGHT

APPRAISERS



ON SITE ESTATE AUCTION

INCLUDING REAL ESTATE

SAT., JULY 31

@ 10AM

PREV. @ 9AM

THE FROHLOFF FARM

236 CHURCH ST., WARE, MA.

Complete contents of the Frohloff estate to be sold under tents on site. Real estate to include the house and 3.31 acres of land. Please call for information on property. Contents of estate to include antiques, paintings, furniture, farm implements, radios, phonographs, cast iron, stoves, advertising, this house is full! Please see website for photos. Barn to include Buggies, sleighs, wagons, etc. Please bring chairs. Food provided. Don't miss this exciting sale. Please visit our website for descriptions and photos.

Terms 15 % Buyers Premium, cash / check. Delivery / shipping available. Phone bids, left bids accepted.

Directions From Rt. 9 downtown Ware, take Church St. north, two miles up on left.

1-508-769-5404



WWW.DLSTRAIGHTAUCTIONEERS.COM

AUCTION ZIP #3181