

Sale #1361

ANTIQUÉ ESTATES AUCTION

Tuesday, July 27, 6:30 PM
 First Church Hall • Rt 12, Sterling, MA

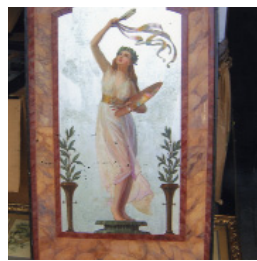
Preview: 5-6:30 PM

Antique and custom furniture, glass, china, Oriental items, paintings, etc. Consigned fresh to the market from local homes.

PARTIAL LISTING: 2 door oak bookcase; oak server; oak and mahogany chests; child's pressed back rocker; 4 post mahogany bed and tip table; set of mahogany dining chairs; cedar chest; trunks; Bent Bros maple dining table and chairs; sectional bookcase, etc; Lenox crèche set; jade and ivory figures; pressed and cut glass; primitives; Nippon; German; Limoges and other china; plated silver; ephemera; Royal Doulton mugs; marionettes; children's books, etc; Ingraham banjo clock; Roycrofters covered jar; bone china; prints; mirrors; o/wood signed HB Kelley; collection of paintings by H W Christensen, W Roxbury, MA, all signed Chris; portrait of Chris by Fritz Michelson, 1908, etc; See auctionzip.com for last minute additions.

STERLING AUCTIONS
 978-422-7901

No calls day of sale * Catered
 John J. Powers * MA Lic 212
 All Sales Final * Cash or Known Check
 * Immediate Removal * Consignments welcome



H W Christensen, W Roxbury, MA, oil on wood



G H Fisher o/c, Venetian w/c



Cut glass, R. Doulton, carved bear cracker, etc



Oil on canvas unsigned



2 of 4 Leo Kaplan & other paperweights



Bronze bird, jade & ivory



Misc collectibles



Staffordshire - "I am starting for a long journey" "I am off with him" and an oil/wood hunt scene



Oil on board, H W Christensen, W Roxbury, MA



H W Christensen



Hyde Park Country Auctions

323 HIBERNIA RD., SALT POINT, NY (HUDSON VALLEY)
COUNTRY, VICTORIAN & COLLECTIBLES AUCTION
AUCTION: Sat. July 31, 2010 4:00 P.M.

PREVIEWS: Fri. 3-8:00 P.M. - Sat. 2:00 P.M - 5:00 P.M. or Appt. week of sale.



Sample of country paintings



Signed Roycroft



Sample of furniture



Sample of country



Sample of Sterling



French Bronze signed J. Moigniez



Sample of toys



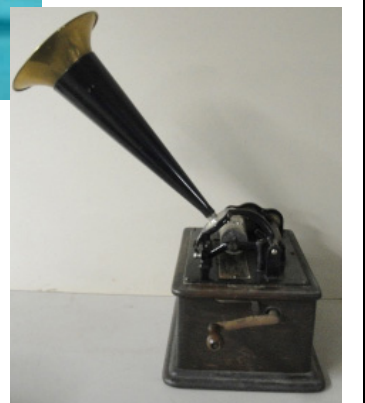
Sample of ephemera



Sample of Christmas



Knox's Gelatine advertisement



1 of 2 Edison cylinder phono's

Complete contents of an Old Hurley NY estate. Part 3 of a large Milton NY country home. Remaining contents of the Townsend homestead, Rhinebeck NY. Plus others. Sale to include: Country, Victorian, Art Deco furniture. Tons of country, Victorian, Art Deco collectibles including: Early kitchen items, textiles, over 100 oil lamps and lamp parts, lots of good china and glassware, majolica, lighting, decorative accessories, Sterling, artwork, frames, decoys, advertising items, post cards, etc. Many items sold in large lots. Air conditioned auction hall. Note outside walkaround starts at 4:00 P.M. Regular auction inside at 5:00 P.M. Web: www.hpcountryauctions.com

FURNITURE: Several primitive 2 door cupboards, wall cupboard in red, various work & lamp tables including Sheraton 2 drawer drop-leaf sewing stand, several primitive benches, turned leg Victorian era farm table 52" x 28", several early candle stands and a restored Queen Ann tea table, small late Empire marble top 1 drawer stand, set 4 Empire DR chairs, good Hepplewhite style mahogany 2 door book case with line inlay signed R.J. Horner, fancy walnut Eastlake plant stand with brass ball & claw feet, primitive mail box unit with cubby holes in old paint, signed Roycroft mission oak book stand for holding Little Journey books (original finish), 20th century custom corner cupboard with 8 lights, Victorian 2 part secretary desk, small walnut cylinder desk (as is) with burl panels, walnut bar from the NYC bowery, custom made late 19th century grandfather's clock with Father Time inlay, fine walnut Eastlake plant stand with brass ball & claw feet, large round oak pedestal table with 6 pressed back oak chairs, other Victorian kitchen tables including chestnut drop-leaf with 2 leaves and cinnamon twist legs, child's oak dresser with mirror, 2 Sheraton cherry drop-leaf tables, mahogany Chippendale style drop front desk, set of 6 high quality Chippendale style ribbon back DR chairs, mahogany secretary desk, painted oak ice box, painted cottage pine child's armoire, early wash stand with backplash having 1 drawer over 2 doors, 18th century sea chest in old paint (as is), upholstered oak bench, oriental hand painted folding screen (as is), Victorian marble top coffee table, set of four 1950's bar stools, JP Coats walnut spool cabinet, country chairs and rockers, 2 pine blanket boxes, country store glass pen showcase with brass frame 44"L x 23"W x 38"H, country store slant front glass showcase 60"L x 52"H, country store walnut frame glass showcase 47"L x 24.5"W x 36"H, country store unit with mirror top and sliding doors cupboard below 86"H x 72"L x 15"W, 2 modern 6' floor glass showcases, pine fireplace mantle. Etc.

COLLECTIBLES: French bronze of a pheasant on rocks signed J. Moigniez. Zinc casting of standing horse. Cast iron sculpture of flying goose (1950's). Garden items including statue of St. Francis holding bird. Two large metal Viking figures, 19th c. Sterling silver items including 24oz tea pot plus other early silver items, some figural. Lots of glassware and china including cut glass, Limoges, Austrian, Nippon, Depression glass, early pattern glass, salts including signed Christoffle, milk and water pitchers, Japanese majolica, bird figurines, German child's Cinderella tea set, etc. Country collectibles including toleware, graniteware, yellowware, small Shaker oval box, collection of wooden mashers, baskets, stoneware, quilts, coverlets, sampler, early andirons, decoys, door stops, folkart including boot holder in original red, silhouette sheet metal weather vane of sailing ship, sugar nippers, etc. Fountain pens. Professional brass microscope signed E. Leitz. Titanic Stewart's button. Several good leaded and stained glass windows. Two Edison cylinder phonographs, one with horn, plus many cylinders. Small early mannequin signed Palmenberg. Large early European wall tapestry, 18th century or earlier - as is. Oriental rugs including runner. Clocks including ornate French style mantle clock. Two violins. Old canes. Lighting including arts and crafts style iron chandelier, leaded glass chandelier,

pair tall candle holders, silver candle holders, 18th c. wrought iron candle holder, oriental table lamps, etc. Oriental items including lacquered letter box with bird decoration. Bronze bookends. Art pottery including Weller. Eight early glass chemical beakers for mixing photographic chemicals. Costume jewelry and hat pins. Large collection of graphic hat boxes including Hobbs & Stetson. Large collection of RR lanterns. Large collection of oil lamps and lamp parts. Tools including 17 early chisels, some signed, other early tools. Singer 221K Featherweight sewing machine. Two WWII Welcome Home flag banners. Folkart carved wooden shark. Etc.

TOYS & CHRISTMAS: Lots of kids books including large collection of Zane Grey, etc. Tin Strauss windup vehicle, Steiff animals, pressed steel construction by Model Toys, litho tin drug store, Disney toys, Tammany mechanical bank, cast iron horse drawn vehicle, dolls including German "My Dream Baby", other dolls, Lone Star electric train (The First 000 gauge model train - London), etc.

EPHEMERA: Over 1800 post cards. Large lot of 1950's greeting cards. Victorian scrap book. 1840's ledgers. Advertising clock for Kentucky Bourbon in original box - 1950 by Pam Clock Co. Rare Coca Cola Gum jar. Wonderful framed adv. for Knox's Gelatine 1901. Shell Motor Oil bottle plus pickle bottles. Photography including tintypes, ambros, dag's, large collection of stereoview cards and viewers, photo of Poughkeepsie Drum Corp, etc. Local memorabilia. Travel posters including 1956 Austrian Mozart Festival. Woman's suffrage poster. Old magazines including Woman's Home Companion. Advertising signs & tins including: Large steamship adv. print, Christmas ornaments including figural German glass and figural Japanese 1950's, Santa Claus collection, etc. Halloween collectibles including large black cat die cuts, etc. Lots of old books including Abe Lincoln, Civil War reference, antique reference, etc.

ARTWORK: W/C Arabians on camels signed P. Pascal. Two quality Italian seascape W/C's signed Montullo. W/C lake and mtns signed H. Magenis '89. W/C seascape signed T.R. Waite. Many primitive paintings including portrait of cow, landscapes, seascapes, Hudson River pencil drawing, etc. Two O/C portrait of boys including boy with apples signed Share. W/C copy of Winslow Homer boy and dory - 19th century. O/C Impressionist still life plus other still life paintings. Grouping of original Broadway costume W/C's by James Reynolds. Fine American frames including ornate gesso signed Herman Schaus NY, classic gesso, large Aesthetic Movement frame, many black walnut, boxes of frames and prints. Prints including chromo U.S. Battleship Maine 1898, etching of J.D. Rockefeller signed Timothy Cole, 19th c. Lincoln & Washington prints, C & I's prints, Friendlander religious etchings, Cobb sporting dog etchings, horse hunt prints, James M. Flagg prints, Sadler prints, J. Hirsh etching "Kiss", 4 wild fowl prints by David Hagerbaumer, etc.

DIRECTIONS/TERMS: We are located at 323 Hibernia Rd., Salt Point NY in the Hudson Valley - Dutchess County (23 miles north of Taconic Parkway & Rte 84 intersection).

TERMS: 15% Buyers Premium cash, MC & VISA, or check. Discovery card 18%. Catered. Email djnavarra@aol.com. Web site www.hpcountryauctions.com. Phone (845)-266-4198.