

Canton Barn Auctions*

75 Old Canton Road - Canton, CT 06019

SATURDAY, APRIL 24 - 7:30 PM

— Doors Open 5 PM —

Orange and West Hartford, CT Estate Remainders



LISTING AS FOLLOWS: Circa 1880 unusually small flame mahog 2-part corner cupboard; late 1700's 2-dwr cobbler's bench has back rest & tools; burl mahogany lift-top 60"long console table w/cabriole leg, circa 1860 Sheraton 1-dwr stand; c.1900 saddle seat mahog 2-seater Queen Anne style bench; c.1850 bamboo-turned washstand w/towel bars; mahogany coffee table w/glass insert & pierce-carved corners and 2 matching side tables; banded contemporary mahog dining table 77"lon x 46" wide w/18" leaf; c.1880 mahog 36"round pedestal base center table; 5'long mahog 6-legged console table w/fluted legs & leather insert by Maitland-Smith; 28" white MT BW Eastlake lamp table; pr of caned seat Winsted side chairs; quarter-sawn oak 1-dwr library table w/stretcher base; solid mahog drop-leaf breakfast table w/Hepplewhite leg; New Haven Calendar wall clock dated 1863; black marble French mantle clock has outside escapement & bronze banding; 8-day E.N.Welch Steeple clock; pr of 28"h Bristol HP lamps w/lighting base; 5-prong brass Revere chandelier w/hurricane shades; pr of c.1920's wrought iron 2-prong mantle lamps w/prisms; early pair of 19"h hand-wrought cast iron candlesticks w/heart base; c.1900 wooden ratchet candlestick 24"high; antique inlaid lap desk; two pair of antique pewter candlesticks; other pewter items; antique cast iron Scottie dog doorstop; German Shepard dog stop; c.1925 carved chalk doorstop of woman in rocking chair; 13"h sculptured bust of child; 6" tri-metal Bronze Japanese vase; 7"h antique celadon bud vase w/enameled flowers; set of 8 Wedgwood dinner plates w/raised grape leaves; service for 8 Enoch Wedgwood Turnstall "Kent" pattern dinner set; Copeland Spode Luncheon set for 9; Bavarian luncheon set for 10; 8"diam Am Brilliant cut glass bowl; 10"h Am Brill cut glass water pitcher; 7"square Am Brill cut glass serving dish; pr of 9" Baccarat Swirl candlesticks; 7 1/2"h x 10"diam Flint glass compote; 7"h German Sevres biscuit jar; 6"h lotus flower antique blue Chinese ginger jar; pattern pressed glass items; covered stoneware German Cider handled punch bowl; Coin Silver spoon lot; silver-plate hand-tooled basket; T.V.Limoges HP plate; Maddox English covered vegetable dish; Furnival Capri pattern large English water pitcher (chipped); 5 antique spooners; set of 4 Villeroy & Bock fruit plates; European artist signed etchings; 15" x

4" Turn/Century pastel of 2 sailboats; Le Port du Croisie watercolor signed Camptier; artist signed snow scene print; framed signed L.Rodowicz painting on board of sunset; framed oval Gould print; and more items still to be unpacked!

View color photos at www.cantonbarn.com

Advance Notice: The Canton Barn will be closed for vacation at the end of May. Auctions will not be held on May 22nd or May 29th. We will resume our weekly auction schedule on June 5th.

NEXT AUCTION: May 1, 2010 at 7:30 PM - Details in "Antiques & The Arts Weekly". Home-Baked Pies * Refreshments * Parking Front & Rear. Children under 16 not allowed. This is a smoke free facility. Thank you for your co-operation.

TERMS: Cash, Traveler's Checks or Personal Checks with proper ID.

****ALL SALES FINAL!***

DIRECTIONS: From I-84 take the Farmington/Rt. 4 Exit. Turn Right on Route 10 to Avon, then left onto Rt. 44 to Canton. Turn left onto Old Canton Road at the Citgo Gas Station. **FROM NEW YORK:** Take I-84 to RT 8 to Winsted, turning left onto Rt. 44 to Canton. Turn right on Old Canton Road.

OPEN SUNDAY FROM 10 a.m. to 4 p.m. for advance preview of upcoming auction merchandise.

** AUCTIONS ARE A WAY OF LIFE WITH US*

Richard E. Wacht, Auctioneer

"ALWAYS LOOK FOR US IN *ANTIQUES AND THE ARTS WEEKLY*"

860-693-0601

BILL SPICER AUCTION

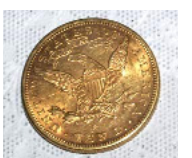
WEDNESDAY, April 28th, 2010

6:00 pm • Viewing 3:00 pm • Box lots at 5 pm

WASHINGTON LODGE MASONIC TEMPLE • 1515 TEN ROD RD, NORTH KINGSTOWN, RI • 401 265-5104



1866 and 1912 \$5 gold coins



1900 \$10 gold coin



Andenken wax doll, Paris, France



pr of flat top tennis racquets



3 swords



Meissen fish platter



German porcelain head doll AM



#15 "The Air-E-Go-Round" toy



sterling serving pieces



Swains bottle



hand painted lamp



"Hey Hey the Chicken Snatcher" toy



concert roller organ



Shelley luncheon set



1920's walnut head mammy doll



1883 Punch & Judy books



44 pc sterling flatware set



glossy Peach Blow vase

DIRECTIONS: FROM CT, take 95 north to exit 5A (102 S). follow 102 S, cross over Rt 3 and continue on 102 for approx 9 mi. Temple is on left.

FROM MASS: take 95 south to exit 9 (Rt 4), follow Rt 4 to exit 5B (102 N). stay on 102 for 1/4 mile. Temple is on right.

FURNITURE: 2 slant front desks; period slant front desk; oak one-drawer table; table & 6 chairs; round oak china; oak commode; Victorian armoire; 3 marble top tables; blanket chest; oak umbrella stand; English tilt top table; oak crib; 3-drawer chest with inlay;

MISC: 2 flat top tennis racquets; Tiffany & Co small dish; hand painted lamp; Meissen fish platter; 4 Meissen serving pieces; 75 pieces of Meissen dishes; Wedgwood bowl; Heisey dishes; glossy Peach Blow vase; Carnival bowl; 45 piece Shelley luncheon set; Bausch & Lomb microscope; 13 perfumes; carved ivory elephants; floor globe; 12 Limoges plates; German banner; Fada radio model P86; Emerson radio; camel ink well; featherweight sewing machine; 2 wooden fishing reels; 3 stain glass windows; bee and bird nests; Indian pipe; lot flower frogs; 3 swords; checkerboard; Roseville planter; barometer, England; linen lot; 7 pc Wedgwood lot; Ingraham regulator clock; telescope; concert roller organ; 2 clarinets; sheet music; 7 Royal Doulton figures; 3 Copeland pitchers; Mary Gregory pitcher; Ritchie Pembroke, MA compass; banjo clock; 1953 Winchester adv. piece; 3 boxes of Victor Majestic decoys in original box; 3 early boxes; Victorian lamps; Victorian prints;

BOTTLES: Warner's Safe Kidney; 1860 Drake Plantation Bitters; Westford Glass Co; Swains Anacea, Philad; Congress Spring Co water bottle;

PAINTINGS: oil/c black child; oil/b fruit by Paient 1883; oil/b by Walden Brown; oil/c by E. K. Browning, 1909;

TOYS - DOLLS: Andenken Paris wax doll; 1924 wax doll; 1920's walnut head mammy doll;

#106 W & S German doll; 9, 1883 Punch & Judy books; Gilbert American Flyer train set; Lilly porcelain head doll; 4 German porcelain head doll AM; American Character black doll; 5 toy bears; 2 doll trunks; 2 doll bureaus; #15 "The Air-E-Go-Round" toy by Reeves MFG. Co; wind-up J. Chein man; German N.Y. -Paris airplane; toy "Hey Hey the Chicken Snatcher" Marx (missing one arm);

EPEMERA: 1861 Civil War letter; old opera programs; 1873 Narragansett map by Mitchell & Webber; 1934 Gowdy Indian gum cards; 67 Red Sox scrap book; postcards; "Claims of Whalemens" booklet; 1940's Reader's Digest magazines; gem tin type album; 1911 "The Book of Baseball"; lot of blotters;

STERLING/JEWELRY/COINS: 44 piece sterling flatware set; sterling spoons; Towle "Silver Flute" sterling flatware set; 27 sterling ornaments; 11 sterling serving pieces; 5 wedding rings; pocket watches; costume jewelry; Confederate note; 1906D \$5 gold coin; gold coins inc: 1900 \$10 and 1912 and 1886 \$5 gold coins; paper money; 1915 \$2 1/2 gold coins; gold jewelry; 13 silver dollars; 13 Peace dollars; silver 1/2 dollars; silver dimes; 4 Morgan silver dollars; Indian head pennies; large cents; 3 San Francisco silver dollars;

12% buyer's premium. Cash. RI or known check. Mastercard/Visa.

DEALERS - BRING PROOF OF TAX NUMBER
VISIT OUR WEB SITE AT

www.billspicerauction.com or www.auctionzip.com - auctioneer ID# 2954

BILL SPICER AUCTIONEER/APPRISER

276 Widow Sweets Rd., Exeter, R.I. 02822 • (401) 295-0339 • FAX (401) 295-8739
day of auction 401 265-5104