



Please join us for our
10th Annual Fire Memorabilia Auction
Saturday Evening, November 7, 2009

Sawyer's Banquet Facility • 180 Plaistow Rd. (Rt 125) • Plaistow, NH 03865
 Preview 4-6pm • Auction starts 6pm

10% Buyers Premium • All items sold as is, where is. CASH, GOOD CHECKS, MASTERCARD, VISA ACCEPTED.
 Full listing available at www.handtubs.com or www.auctionzip.com (id no. 7499)
 • Absentee bids accepted through both sites • LISTING SUBJECT TO OMISSIONS AND ERRORS •

HelMets-Gratacap Leather helmet with leather High Eagle, 64 Comb A.W. Dolfini High Eagle Salem VFA, A.F. Spawn High Eagle, High Lion possibly Wilson, High Eagle w/Foreman 3 front, Wilson Poughkeepsie High Eagle, Olson aluminum High Eagle, Cairns Ventilated High Eagle, Cairns New Yorker Boston FD, Cairns New Yorker w/3 fronts, Shelton & Cheever w/transitional front holder, Cairns High Eagle Donora PA, S.Logiudice Staten Island, White Cairns New Yorker HFD, Cairns Senator Boston Protective Dept, Cairns Senator Oceanic RFD, Cairns Fiber Model 900, Cairns Plastic Model 900P. pArADe BeLts-Worcester Steamer 3, Merrimacport, Mutual, Excelsior, Cataract. ALArm BoXes-1880 Style Solid Door Gamewell Sector 4, Half-Glass Gamewell Sector 4, Star Electric Metropolitan Model, 1878 Utica, Oak case Acme Fire Alarm Company, empty Sterling AlarmBox, L.W. Bills w/Minute-man logo, Slanted fist Gamewell Excelsior, 1951 Style Gamewell Master, Gamewell w/Full Glass quickaction door, Gamewell NY non-instructional door, Gamewell Police box. trumpets-Silver plated presentation, Silver plated Boston Steam Engine, Small silver plate, Nickel plated working, Brass working. prints-C&I "Facing the Enemy," Large Young America #1 Handtub, C&I "The View of the Terrific Explosion at the Great New York Fire", Boston Steam Engine #24, E Opper Steam Engine, Boston Engine Co #22, BADGes-Okomakamesit #2 Marlboro, Engine #1 Newburyport, District Chief #2 Framingham, Manchester NH Breast badges, Milford NH Breast & Hat badges, Merrimack NH badge, 10 different Rochester NY Breast Badges, 17 mini badges, 3 pc Reading PA Turtle Badge set, Bristol RI, NH Forest Fire, Marion NY, Gates-Chili NY, hatbadges from Carmel-by-the-Sea, Broomall, Belmar, Chili & Riverdale NY, Rockland ME, Pearl River NY, Peekskill NY, Uxbridge MA, South Paris ME, Bourne MA, Edwards MA, Pittston PA, Sandwich MA, Hyannis MA, Brewster MA. ALArm eQuipment-three Digit oak Gamewell Visual indicator, Moses crane House Gong, 10" Chain-pull House Gong, Code wheels, Federal Electric Horn, 5" Muffin Bell, 7 foot Pedestal from Hartford CT, Registers, Take up Reels, Tape, J.H. Burnell Tapper Fire Alarm, 6" brass bell rAttLes-Bagshaw & Field brass weighted single reed, Single reed, Weighted double reed, Horizontal single reed LAnterns-White Deitz Fire King, Seagrave Deitz Fire King, Deitz Tubular, Deitz Fire King. eXtinGuisHers-1 1/2 Gallon Foamite-Childs, Badger Pony, 2 1/2 Gallon Ellis, Red Star 2 1/2 Gallon, 2 Gallon Pyrene, Badger Nautilus, Brass Indian backpack, Brown bottle Carbona, 1 Quart LaFrance. Fronts-8" Cairns E1 BFD, Ludlow, Greensboro, four different Waterville ME, AbleCo 5 ER FD, Lieut NH FD, Instructor Johnson, E1 FFD, Lieut E3 FFD LAMP-George H Foster Somerville #3 Engine LampnoZZLes-Leather wrapped American LaFrance, Akron Playpipe w/leather handles, Underwriters playpipe, Bottle nozzle, Fog- Nozzles, Chemical Nozzles. Buckets-1812 S. Tillinghast #2, Gold #4 BALLot BoXes-Sliding top walnut w/clay marbles, double flip top, single flip top mAGAZines-"Fire Protection", "Fire Engineering", "Firemanics", "Firemen", Charter Issue of "FireHouse", "Fire Journal", "Prevention" to Ys-Mickey Mouse Fire Truck, repro Cast Iron Ladder Wagon, Hubble, Tootsie, Midgetoy, Danbury Mint Model, HO Scale Aerial Tower, Rolls Royce Matchbox. epHemerA-Large lot Boston Sparks, Torrent Handtub Bill of Sale, SPAAMFAA Newsletters, History of Boston Protective Dept, Hunneman Steamer Bill of Lading, Webb Motor Fire Apparatus

Advertising, Great Chelsea Fire, 1962 New Bedford MA, 5th Annual Boston VFA Dance Card, 3rd Annual Winchendon Promenade & Ball, 1888 Harpers Weekly, 1884 Scientific American, Certificate Boston Charitable Assn, 1937 Boston Engine 18, 1901 Retirement Certificate, various Prints including 2 RI Handtubs, 1914 Seagrave pumper, 2 Matchbook Albums, Texaco & Pabst Blue Ribbon Ale Adverts, 2 Gamewell Catalogues, RI Steam Engine Co #1 Dance Card, Pawtucket Firemens Relief, Plymouth NH Dance Card, postcards, 60 assorted postcards, 20 Wilkinson Providence RI, books-Old Fire Laddies NY & Brooklyn, First Edition Engine! Engine!, Great Chicago Theater Disaster, Chicago Awful Theatre Horror, 1855 Insurance, The Great Boston Fire 1872, Fire Apparatus of Chicago Vols 1, 2, 3, Comish, Jakes, 30 Years on the Line, Fire & Water, Children's books, 6 Jim Piatti Reference books and more photographs-Boston Steam Engine Co #1, Boston FD Helmets melted in 1898 Merrimack St Fire, Boston Fire Boat Engine #47 truck eQuipment-7 1/2 inch brass bell with bracket, Manufacturers Plates -Seagrave & American LaFrance, axle nut wrench, Vesta Spotlight, Sterling hand-crank Siren, 12V free rolling Sterling Siren, Maxim Apparatus Extinguisher plus-2 Viking Style Parade Axes, Smokey Bear Ashtray, Grinnell Ashtray, Bed Keys, Helmet Birdhouse, Last Alarm Blackboard Ben Ellis Fire Equipment Boston, Minisink #1 Unionville Parade Hat, 5 1/2" Grinnell Pressure Gauge, running Fireman Front Holder, UFI Cast Iron Firemark, Green Deitz Globe for Fire King Lantern, Insurance lot, Mt Vernon Honor Roll, Guardian Assurance Ledger Marker, sterling silver match safe, folk art 24" Steam Engine model, Reading PA pocket mirror, Eureka Hose Company letter clip, Small 1909 Loving Cup, brass Union corner nameplates, New Bedford MA lot, glass paperweights, Herculite Gamewell Phone box, FDnY H&L co. 34 Logbook, Patches, Postage lot, Puzzle, Continental Fire Insurance Sign, Ribbons, Medallions, Engineers Torch, Pike Pole tip, videocassettes, Work Belt and much much more...

Directions From interstate 495 take exit 51B. Follow route 125 north 4 miles. Hall is on the left. Look for Auction signs.

For further information please contact:
 Handtub Junction, USA
<http://www.handtubs.com>
 Email: handtubjunction@aol.com • Phone: 508-786-0977
 David K. Falconi, PO Box 359, Southborough, MA 01772
 Triple Nickel Auctions
 George Rallis, Auctioneer
 Go to www.auctionzip.com for full listing
 Enter Auctioneer ID# 7499 in top right corner.
 NH Lic. No. 3070 • MA Lic. No. 2538
 978-388-3495 • Email: TripleNickelAuctions@juno.com

O'LEARY ANTIQUES AUCTION

ITEMS FROM CHESTNUTHILL, NEWTON, AND WELLESLEY, MA.
SAT. NOV 7, 2009 Masonic Lodge 1101 Highland Ave. Needham, Ma. (Rte. 95/128 (Exit 19B))
 PREVIEW: 8:30 - 11:00 AM, AUCTION : 11:30 AM PHYLLIS O'LEARY AUCTIONEER, MA LICENSE #2514
 INQUIRIES: Phone 617-734-3967 fax 617-739-4845 e-mail: orp3@comcast.net
 For more info and photos please visit website at: olearyantiquesauctions.com

PARTIAL LISTING OF ITEMS:

Artwork: David Aronson sculpture. Charles A. Walker o/c, George Post w/p, C. Hoffbauer gouache, pencil drawings, A. Terhell w/c, sign. Maria Gianni gouache, S. Guzzone gouache, photo's of known musicians Y. Menuhin, M. Elman, R. Ricci, R. Garbousova, actress Mona Barrie, D. Gornston, World war I posters & more. **Porcelain:** Meissen figurines, Herend serving pieces Green Chinese Bouquet, Royal Worcester, Rose Medallion, Royal Bayreuth Rose Tapestry pcs. & more. **Silver:** Royal Danish flatware set & Candelabra, Wallace flatware set Sir Christopher, Georgian sugar basket, Black Starr & Frost repousse sterl. plate, Maynard & Potter, Kirk, Gorham silver Sterl overlay trivets, Francis 1st., Frigast & more. **Oriental Rugs:** Semi-Antique Herez, Antique Mahal room size rug C. 1900, Oversized Khorassan, Kurdish area rug, Karabagh, lurs, Kuba, Oversized Aubusson & more. **Furniture:** Chippen-

dale period highboy top, replaced bottom, 50's Bramin Danish leather chair & ottoman, brass inlay vitrine, 19th C. two door cabinet, pr. upholstered 50's-60's modern style chairs, mid-19th C. mahogany game table & more. **Pottery:** Hampshire, Don Cornett, Roseville, Ruskin, majolica, amphora, more. **Glass:** Tiffany favrile vase, unsigned art glass, wave crest box, P. d Avesn, lalique bowl & more. **Jewelry:** Edward Oakes Arts & Craft 14Kt. bracelet, platinum & diamond earrings, Vacheron & constantin platinum & diamond 20's lapel watch, Margot Taxco sterling necklace, Cartier ball point pen with roll over ring design & sapphire cabochon tip, Gold necklaces, 14kt Box case ladies watch, rings & more. **Items of interest:** Boston pre-revolutionary sampler 1745, Four paneled ptd. oak screen, Oriental four paneled screen, Scrimshaw, Ivory carved tusks, Frank Adams miniature duck, signed with paper label, lot of Britans.



Mid- to late 19th C. Sebastiano Guzzone gouache of Middleastern man 10" H x 6 1/2" W



Vacheron & Constantin Platinum & Diamond watch pin



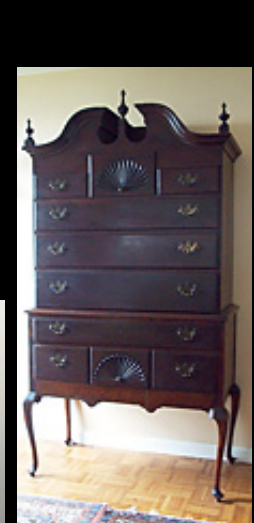
David Aronson Sculpture Man playing violin on horse 17" H x 15" W



Antique Mahal rug 1900's 13ft 2" x 9ft 9"



George Post watercolor 17 1/2" H x 23 1/2" sight size



Mahogany highboy period top, replaced bottom



Two fine German porcelain 9" plates, blue beehive mk., one sign. Wagner 2nd plate sig. Indecipherable



Charles Alvah Walker o/b 6" H x 20" W sight size



Pre-Revolutionary Boston Sampler 1745 made by Elizabeth Sweetser

Terms: Cash, approved check, MC/Visa. 15% Buyers Premium 2.5% discount for cash or good check. All Sales Final & Sold As Is. Subject To Errors, Omissions, or Reserves. Cash only for oriental rugs