

MAIN AUCTION GALLERIES, INC.

137 West 4th Street Cincinnati, OH 45202-2705
513-621-1280

www.mainauctiongalleries.com — www.auctionzip.com — jkarp@fuse.net

FINE DECORATIVE AUCTION

Sunday, November 15th, 2009—Starting at 11:00 a.m.

Featuring the Estate of Robert Emmett White, Jr., former owner, editor and publisher of the Oxford Press and other prominent homes.

Exhibition:

Wednesday through Friday: 8:00 a.m.-4:00 p.m.
Saturday, November 14th 7:30 a.m.-12:00 p.m.—Noon only
Sunday, November 15th 7:30 a.m.-10:30 a.m.



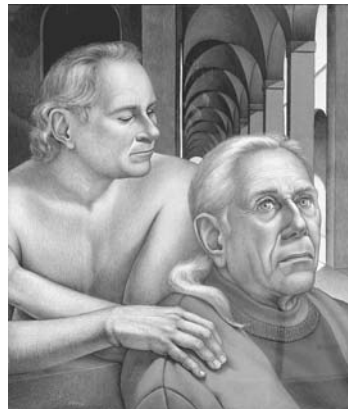
Cherry Highboy, 18th century, has broken arch with original flame finials. Upper section has three drawers across top with carved fan in center drawer 4 long drawers which graduate in size; The lower portion has 1 long drawer, 3 small drawers w/carved fan in center drawer; carved continuous skirt on base w/fine carved knee bend all resting on queen anne pad feet, Brass is old but not original (19" x 37 1/4" x 85 1/2")



Oil/C - "Faces", signed Ralpbael Soyer (30" x 24")



Bronze Two Boys with Scull Oars by Tom Durham, (21"), R.E. White Collection



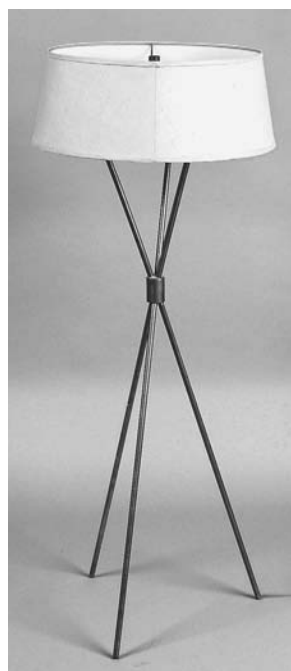
Portrait of Paul Cadmus & Jon Anderson 1992, Egg Tempera by Michael Bergt (17 1/2" x 15"), Info on Reverse - Gala Opening 1965, Midtown Galleries, R. E. White Collection



19th century Fine 2 piece Corner Cupboard w/painted finish, has split Turnings on Top & Base, has 12 glass panels w/original shelves, cornice molding, possibly Ohio or Pennsylvania, (44"W x 22 1/4"D x 83"H)



Wonderful Bronze & Ivory on Onyx, "Indiscreet" signed Chiparus (Needs repair where parakeet rests on her hand), (17" x 8" x 5")



T. H. Robsjohn-Gibbings Hansen Floor Lamp. Fabric covered drum shade, ivory enameled metal reflector on tripod base, marked with embossed markings on reflector, (47 1/2" H x 18 1/2" W)



Ink on Paper, Studies of Jimmy Kingsley, Mariba's Vineyard 1934-1935, signed Paul Cadmus (9 3/4" x 14 1/4"), R. E. White Collection



Awesome table with 18 individual signed hand painted tiles of theatrical stars, each is signed by the artists who painted them. Artists include: Hirschfeld, Berman, Winn, Gard, French, March (5 have hair-lines), (19" x 37" x 17 1/4"), R. E. White Collection



Most unusual large Desk with a painted grain finish, mixed woods, 2 large upper drawers, 2 doors for storage on base, lift top, possibly Kentucky or Tennessee, (29 1/2" x 52" x 62 3/4")



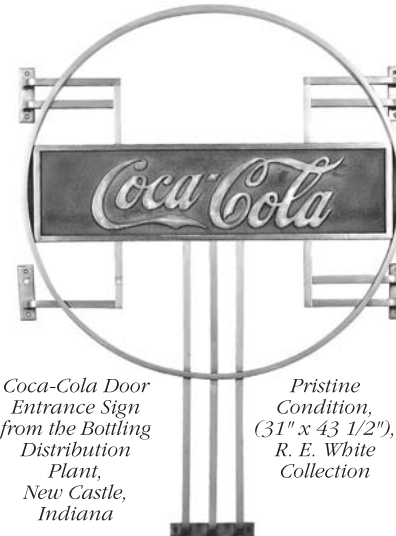
Awesome Black Forrest Carved Cigarette Stand with full carved bear in center of post, 3 small bears on top, 2 lift for storage compartments, carved child's chair with bear in center, (14" x 17" x 33") (needs minor restoration)



Decoy signed Lem, Steve Ward Bros, 1950



Outstanding Set of Porcelain Game Plates, painted by 2 artists, gold ornate border, by S. Russell, Game Birds by A.H. Wright, Mintons, sold at Tiffany's From the Edward Small Collection, (9")



Coca-Cola Door Entrance Sign from the Bottling Distribution Plant, New Castle, Indiana

Pristine Condition, (31" x 43 1/2"), R. E. White Collection

Auctioneers & Appraisers: Family owned since 1871

J. LOUIS KARP JONAS KARP (5th Generation)

TERMS: 15% Buyer's Premium, 3% discount for cash or checks. VISA, Mastercard, Discover accepted. Buyer is responsible for all shipping Cash or Travelers Checks in U.S. currency only, arrangements for phone bidding or absentee bids 3 days in advance of sale. We will only take a limited amount of phone bidding on any item with a value of \$300 or more.